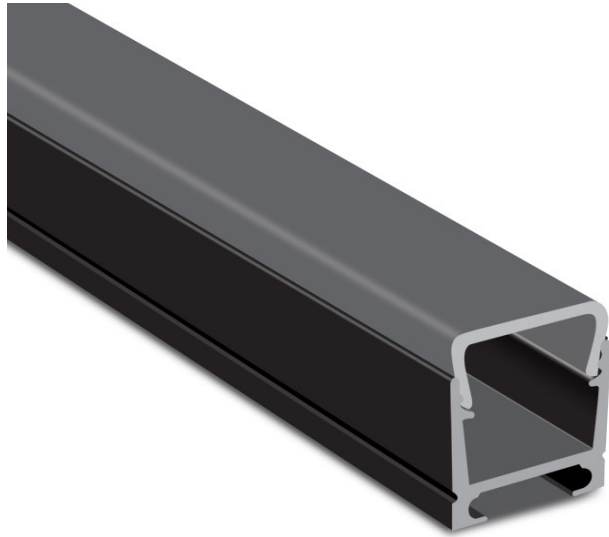


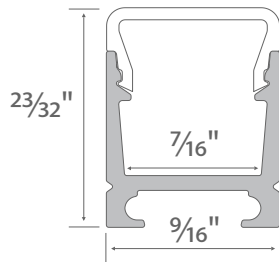
# LED Aluminum Channel - SKINNY DOME YD 1418



SKINNY DOME YD 1418 is ideal for various surface mounting of LED strip light. With magnetic nuggets, YD 1418 can be easily installed to metal surfaces. While installing, connectors can also help Skinny Dome to achieve different shapes.

## Features

- Suspended mounting.
- Customizable.
- Anodized finish.
- Hotspot-free design.
- Covers and protect LED strip light.
- Manufactured with a patented frosted diffuser for maximum lumen output and wider beam distribution.



## Specification

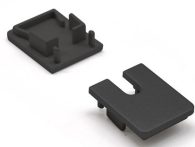
<b>Length</b>	94in
<b>Internal width</b>	0.42in
<b>Finish</b>	Black
<b>Diffuser</b>	Black
<b>Material</b>	Anodized Aluminum
<b>Installation</b>	Surface Mount, Suspended Mount
<b>Accessories</b>	End cap, Mounting clip

## Models

Model No.	Finish Color	Diffuser Type	Dimension (L x W xH)	Application
YD-1418-AL-8-B-B	Black	Black	94x0.55x1.17in	Indoor, Outdoor

## Accessories (Sold Separately)

### Mounting Accessories



YD 1418 End Caps  
**YD-1418-EC-B**



YD 1418 Metal Clip  
**YD-1418-MC**



YD 2004 Plastic Clip  
**YD-1418-MN**



Aluminum Channel Suspension Kit  
**AL-SE-HK-YD1418**

## Connecting Accessories



AL L-Shape Corner Connector - Flat  
**YD-FLC**

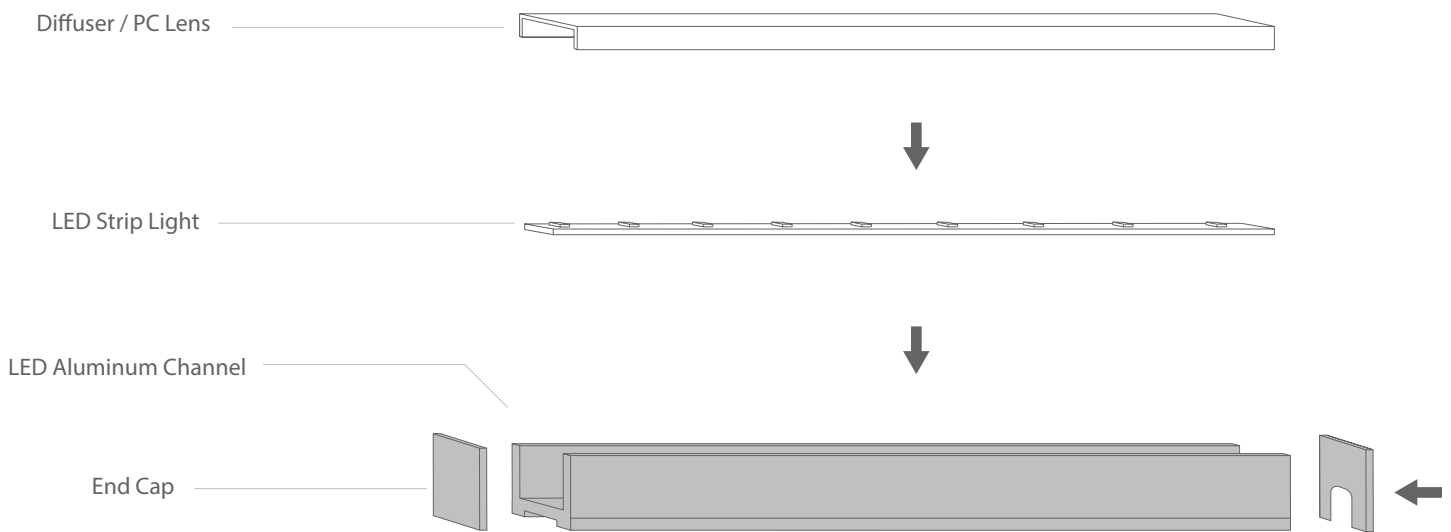


AL L-Shape Corner Connector - Vertical  
**YD-VTC**



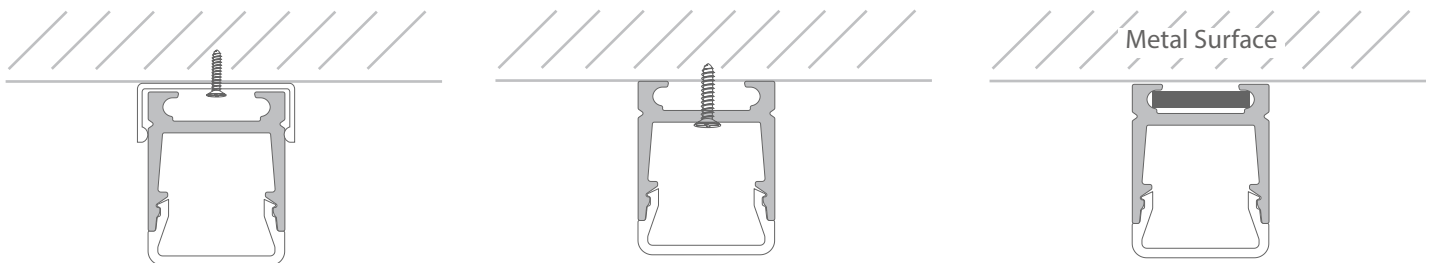
AL Straight Extend Connector  
**YD-EX**

## Installation Diagram



## Mounting Options

### Surface Mount

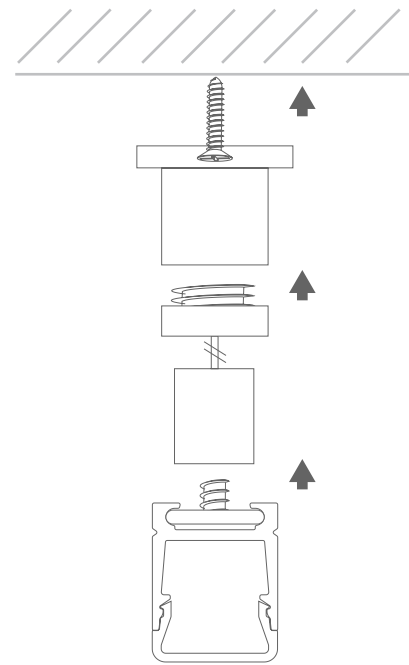
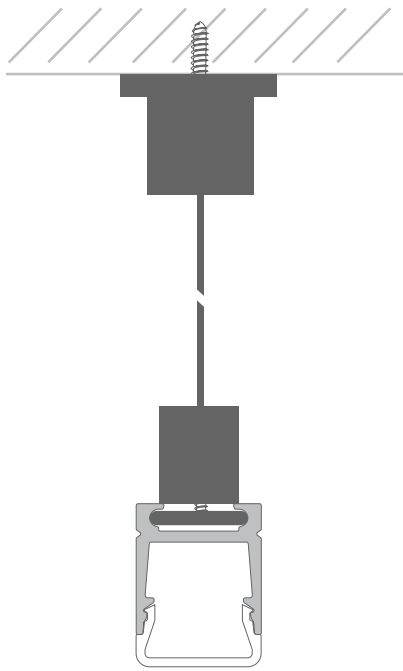


Surface mounting with Mounting Clips

Surface mounting with Screws

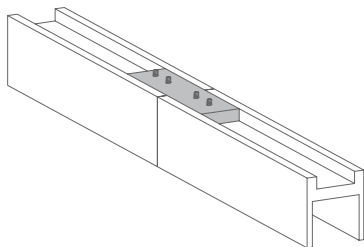
Metal surface mounting with Magnetic Nugget

## Suspended Mount

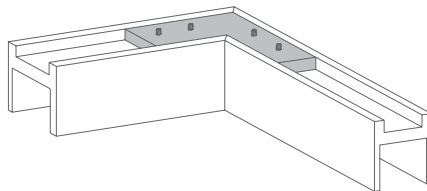


Suspended mounting with Suspension Kit

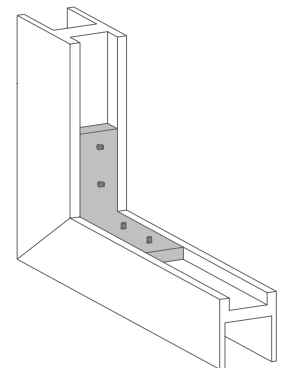
## Connecting Options



Connecting with  
AL Straight Extend Connector

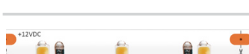


Connecting with  
AL L-Shape Corner Connector - Flat



Connecting with  
AL L-Shape Corner Connector - Vertical

## Compatible LED Strip Lights

	Series	Model No.	Width	LED Quantity	Light Filling Level	Hotspots Level
	<b>INFINITE</b>	GL-3528-120-xxxxK-24V-IP20-CC	0.39in	34 LEDs/ft	Full	No Hotspot
	<b>ECO</b>	GL-3528-112-xxxxK-xxV-IPxx	0.39in	34 LEDs/ft	Full	No Hotspot
	<b>PRO</b>	GL-3528-240-xxxxK-24V-IPxx	0.39in	73 LEDs/ft	Full	No Hotspot
	<b>LEGEND</b>	GL-2835-240-xxxxK-24V-IPxx	0.39in	73 LEDs/ft	Full	No Hotspot
	<b>NARROW</b>	GL-3528-120-xxxxK-12V-IP20-5MM	0.2in	36 LEDs/ft	Full	No Hotspot
	<b>COB</b>	GL-COB-480-xxxxK-24V-IP20	0.39in	145 LEDs/ft	Full	No Hotspot
	<b>TUNABLE WHITE</b>	GL-2835-240-CCT-24V-IP20	0.39in	73 LEDs/ft	Full	No Hotspot
	<b>FOR BREAD</b>	GL-2835-60-2500K-12V-IP20-B	0.39in	18 LEDs/ft	Full	Partial Hotspot
	<b>FOR MEAT</b>	GL-2835-60-2900K-12V-IP67-M	0.39in	18 LEDs/ft	Full	Partial Hotspot
	<b>RGB HIGH BRIGHT</b>	GL-5050-60-RGB-xxV-IPxx	0.39in	18 LEDs/ft	Full	Partial Hotspot
	<b>RGB SUPER BRIGHT</b>	GL-3535-120-RGB-24V-IPxx	0.39in	34 LEDs/ft	Full	No Hotspot
	<b>RGB DIGITAL</b>	GL-5050-60-DIG-12V-IPxx	0.39in	18 LEDs/ft	Full	Partial Hotspot

### Light Filling Level



Full



Partial

### Hotspots Visible Level



No Hotspot



Partial Hotspot



Hotspot

#### Note:

We recommend to use two, or more, LED strips in a shallow channel that has internal width that is greater than .8in to prevent partial filling.

#### Note:

When LEDs are used with aluminum channel there may be hot spots. The more depth of a channel, and/or density of a LED, can help reduce visible hot spots