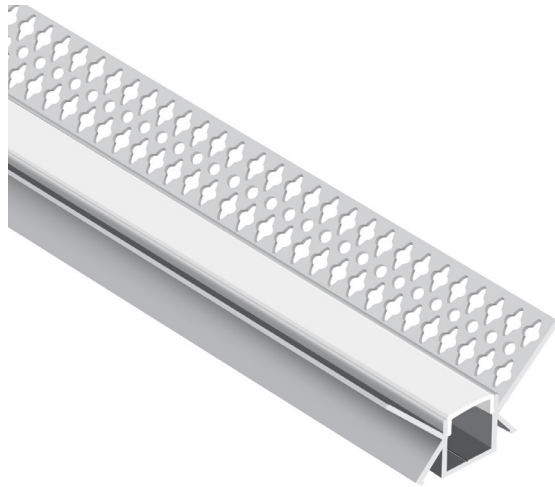


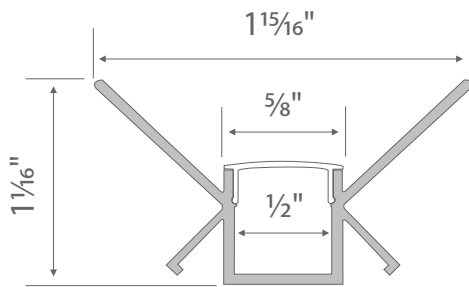
LED Aluminum Channel - **INSIDE CORNER** BY 5026



The BY 5026 channel is to be recessed along inside corner of two walls and designed to create an illuminated straight inner corner using an LED strip light.

Features

- Recessed mounting.
- Customizable.
- Anodized finish.
- Trimless.
- Covers and protect LED strip light.
- Manufactured with a patented frosted diffuser for maximum lumen output and wider beam distribution.



Specification

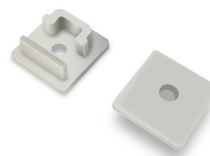
Length	94in
Internal width	1/2in
Finish	Silver
Diffuser	Milky
Material	Anodized Aluminum
Installation	Recessed Mount
Accessories	End cap

Models

Model No.	Finish Color	Diffuser Type	Dimension (L x W xH)	Application
BY-5026-AL-8-M	Silver	Milky	94x1 15/16x1 1/16in	Indoor, Outdoor

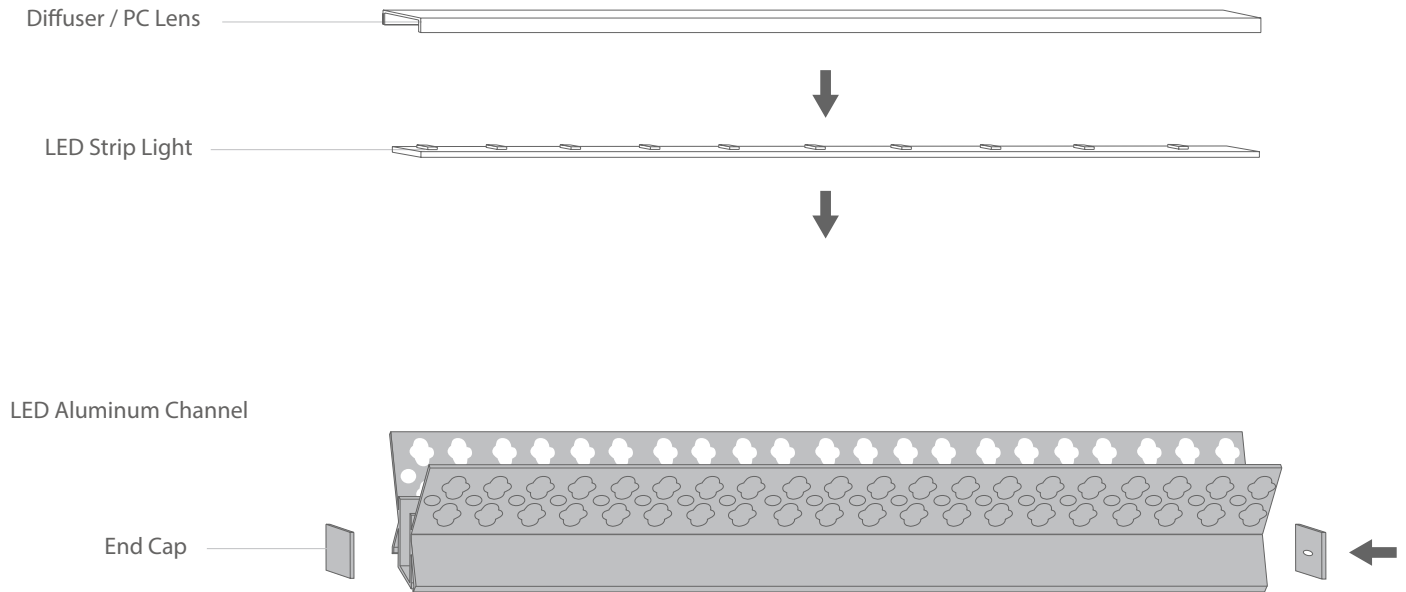
Accessories (Sold Separately)

Mounting Accessories



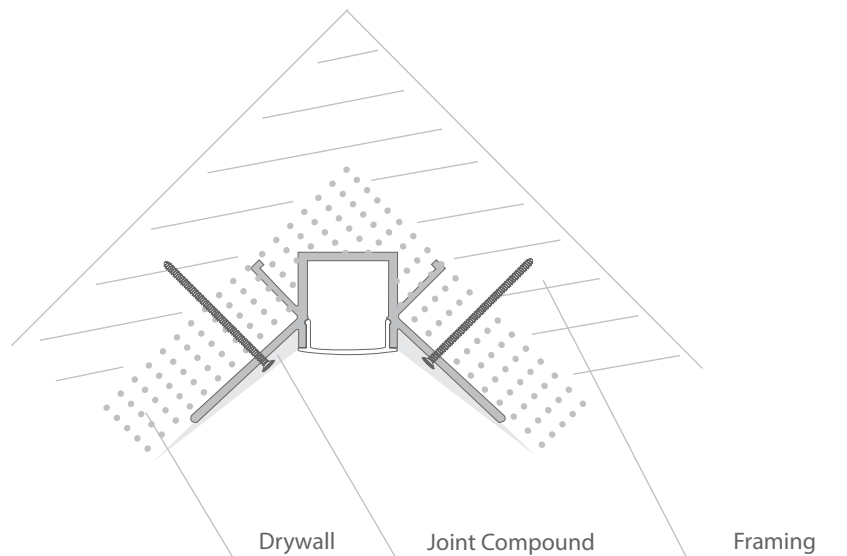
End Caps
BY-5026-EC

Installation Diagram


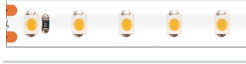

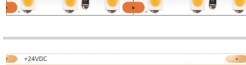

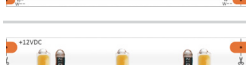







Mounting Options

Recessed Mount



Compatible LED Strip Lights

	Series	Model No.	Width	LED Quantity	Light Filling Level	Hotspots Level
	INFINITE	GL-3528-120-xxxxK-24V-IP20-CC	0.39in	34 LEDs/ft	Full	No Hotspot
	ECO	GL-3528-112-xxxxK-xxV-IPxx	0.39in	34 LEDs/ft	Full	No Hotspot
	PRO	GL-3528-240-xxxxK-24V-IPxx	0.39in	73 LEDs/ft	Full	No Hotspot
	LEGEND	GL-2835-240-xxxxK-24V-IPxx	0.39in	73 LEDs/ft	Full	No Hotspot
	NARROW	GL-3528-120-xxxxK-12V-IP20-5MM	0.2in	36 LEDs/ft	Full	No Hotspot
	COB	GL-COB-480-xxxxK-24V-IP20	0.39in	145 LEDs/ft	Full	No Hotspot
	TUNABLE WHITE	GL-2835-240-CCT-24V-IP20	0.39in	73 LEDs/ft	Full	No Hotspot
	FOR BREAD	GL-2835-60-2500K-12V-IP20-B	0.39in	18 LEDs/ft	Full	Hotspot
	FOR MEAT	GL-2835-60-2900K-12V-IP67-M	0.39in	18 LEDs/ft	Full	Hotspot
	RGB HIGH BRIGHT	GL-5050-60-RGB-xxV-IPxx	0.39in	18 LEDs/ft	Full	Hotspot
	RGB SUPER BRIGHT	GL-3535-120-RGB-24V-IPxx	0.39in	34 LEDs/ft	Full	Partial Hotspot
	RGBW	GL-5050-96-RGB+xxxxK-24V-IP20	0.47in	29 LEDs/ft	Full	Hotspot
	RGB DIGITAL	GL-5050-60-DIG-12V-IPxx	0.39in	18 LEDs/ft	Full	Hotspot

Light Filling Level



Full



Partial

Hotspots Visible Level



No Hotspot



Partial Hotspot



Hotspot

Note:

We recommend to use two, or more, LED strips in a shallow channel that has internal width that is greater than .8in to prevent partial filling.

Note:

When LEDs are used with aluminum channel there may be hot spots. The more depth of a channel, and/or density of a LED, can help reduce visible hot spots