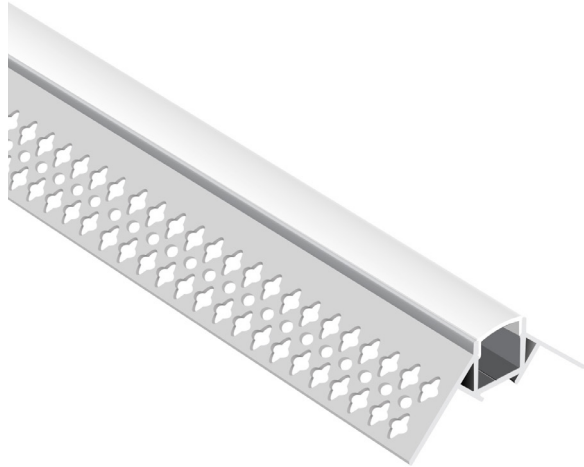


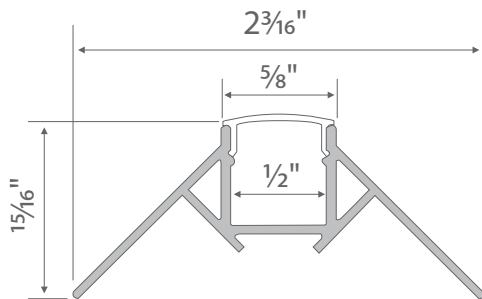
LED Aluminum Channel - OUTSIDE CORNER BY 5324



The BY 5324 channel is to be recessed along outside corner of two walls and designed to create an illuminated straight outer corner using an LED strip light.

Features

- Recessed mounting.
- Customizable.
- Anodized finish.
- Trimless.
- Covers and protect LED strip light.
- Manufactured with a patented frosted diffuser for maximum lumen output and wider beam distribution.



Specification

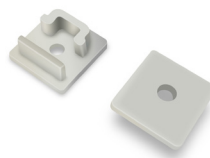
| | |
|-----------------------|-------------------|
| Length | 94in |
| Internal width | 1/2in |
| Finish | Silver |
| Diffuser | Milky |
| Material | Anodized Aluminum |
| Installation | Recessed Mount |
| Accessories | End cap |

Models

| Model No. | Finish Color | Diffuser Type | Dimension (L x W xH) | Application |
|----------------|--------------|---------------|----------------------|-----------------|
| BY-5324-AL-8-M | Silver | Milky | 94x2 3/16x1 5/16in | Indoor, Outdoor |

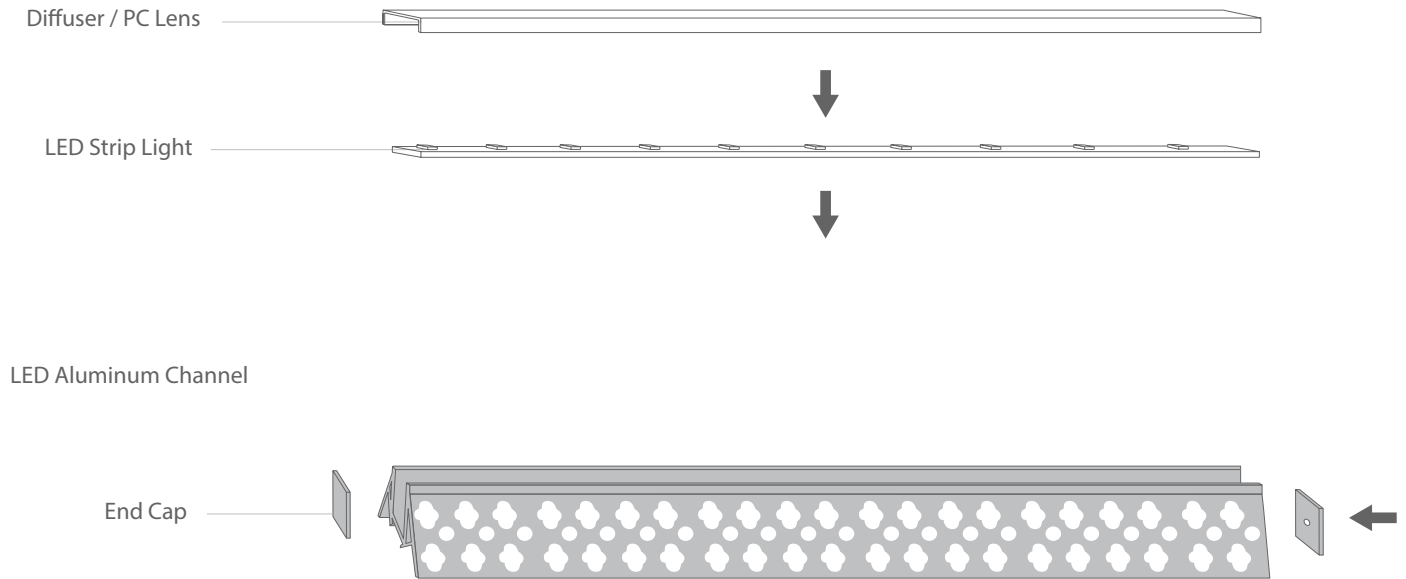
Accessories (Sold Separately)

Mounting Accessories



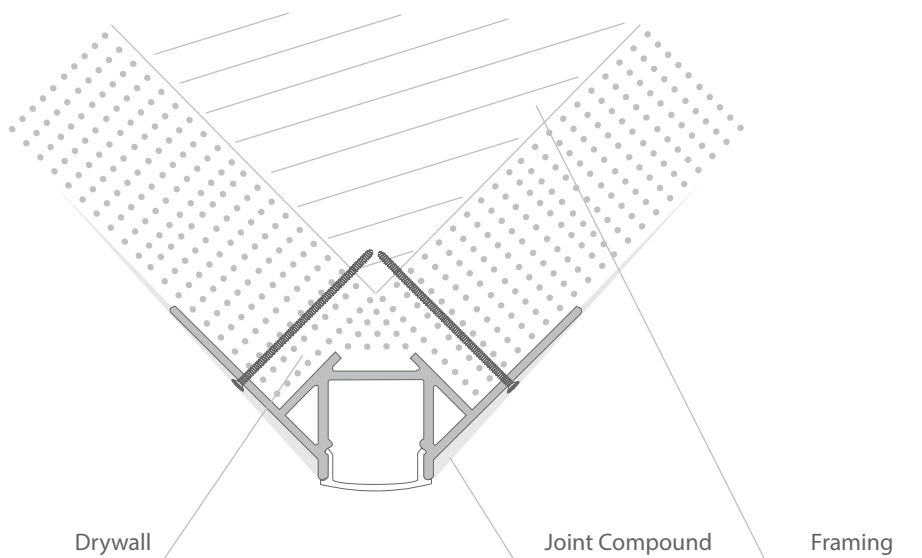
End Caps
BY-5324-EC

Installation Diagram

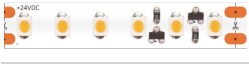
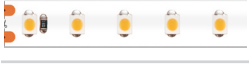
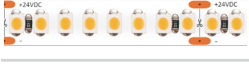






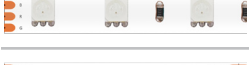
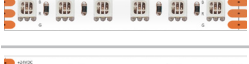
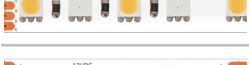



Mounting Options

Recessed Mount



Compatible LED Strip Lights

| | Series | Model No. | Width | LED Quantity | Light Filling Level | Hotspots Level |
|---|-------------------------|--------------------------------|--------|--------------|---------------------|-----------------|
|  | INFINITE | GL-3528-120-xxxxK-24V-IP20-CC | 0.39in | 34 LEDs/ft | Full | No Hotspot |
|  | ECO | GL-3528-112-xxxxK-xxV-IPxx | 0.39in | 34 LEDs/ft | Full | No Hotspot |
|  | PRO | GL-3528-240-xxxxK-24V-IPxx | 0.39in | 73 LEDs/ft | Full | No Hotspot |
|  | LEGEND | GL-2835-240-xxxxK-24V-IPxx | 0.39in | 73 LEDs/ft | Full | No Hotspot |
|  | NARROW | GL-3528-120-xxxxK-12V-IP20-5MM | 0.2in | 36 LEDs/ft | Full | No Hotspot |
|  | COB | GL-COB-480-xxxxK-24V-IP20 | 0.39in | 145 LEDs/ft | Full | No Hotspot |
|  | TUNABLE WHITE | GL-2835-240-CCT-24V-IP20 | 0.39in | 73 LEDs/ft | Full | No Hotspot |
|  | FOR BREAD | GL-2835-60-2500K-12V-IP20-B | 0.39in | 18 LEDs/ft | Full | Hotspot |
|  | FOR MEAT | GL-2835-60-2900K-12V-IP67-M | 0.39in | 18 LEDs/ft | Full | Hotspot |
|  | RGB HIGH BRIGHT | GL-5050-60-RGB-xxV-IPxx | 0.39in | 18 LEDs/ft | Full | Hotspot |
|  | RGB SUPER BRIGHT | GL-3535-120-RGB-24V-IPxx | 0.39in | 34 LEDs/ft | Full | Partial Hotspot |
|  | RGBW | GL-5050-96-RGB+xxxxK-24V-IP20 | 0.47in | 29 LEDs/ft | Full | Hotspot |
|  | RGB DIGITAL | GL-5050-60-DIG-12V-IPxx | 0.39in | 18 LEDs/ft | Full | Hotspot |

Light Filling Level



Full



Partial

Hotspots Visible Level



No Hotspot



Partial Hotspot



Hotspot

Note:

We recommend to use two, or more, LED strips in a shallow channel that has internal width that is greater than .8in to prevent partial filling.

Note:

When LEDs are used with aluminum channel there may be hot spots. The more depth of a channel, and/or density of a LED, can help reduce visible hot spots