

100W LED FLOOD LIGHT



MODEL #	
PROJECT:	
NOTES:	
DATE:	
PREPARED BY:	

PRODUCT FEATURES:

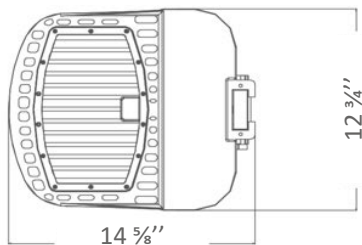
- ❖ Optical design, greatly improved the light utilization and evenness
- ❖ High efficiency LED Driver
- ❖ Cast Aluminum design, better cooling, light quality, LED Tj < 85°C.
- ❖ Photocell Control (Optional)
- ❖ 1-10V dimming(10%-100%)standard

Additional Information:

- Power: 100W
- Input: AC 120-277V
- Light Source: LUMILEDS
- Driver: SOSEN DRIVER

**PRODUCT APPLICATIONS:**

The FLOOD LED Lighting Series can be widely used Indoor or Outdoor (Wet Location) Excellent for Underground Parking Lots, Museums, Art Galleries, Sidewalks, Buildings, Schools, Residential Areas and many other applications

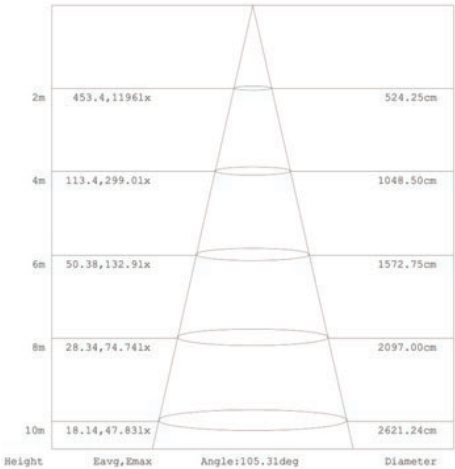
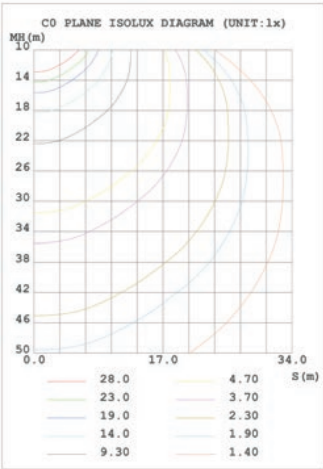
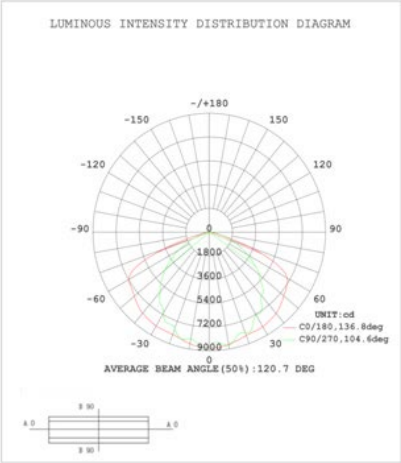
**Structure Features:**

- Shell Materials: Aluminum & PC
- Finish: Dark Bronze
- Net Weight: 4.0KG (8.8 LBS)
- Product Size: 14 5/8" x 12 3/4" x 3 1/2"
- Carton Size: 16 1/2" x 14 1/16" x 11 7/32"

TECHNICAL PARAMETERS:

Type	Flood Light		
Power	100W	Lighting Angle	120°
Input Voltage	AC120-277V	LED Brightness Decay	<5%/6000 hrs
PF	>0.99	Working Life	>75000 hrs
Driver Efficiency	>90%	Working Temperature	-30 - +45℃
Luminous Flux	15381 Lm	Storage Temperature	-40 -+80℃
Color Temperature	5000K	Protection Level	Wet Location/IP66
CRI	Ra>70	Cable	Input Connect (0.5m)

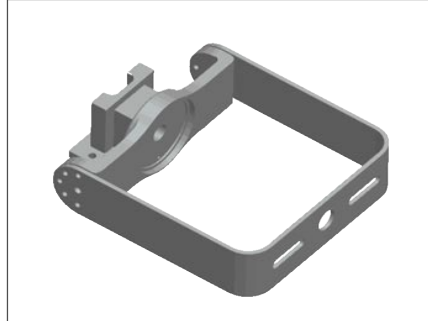
PHOTOMETRY:



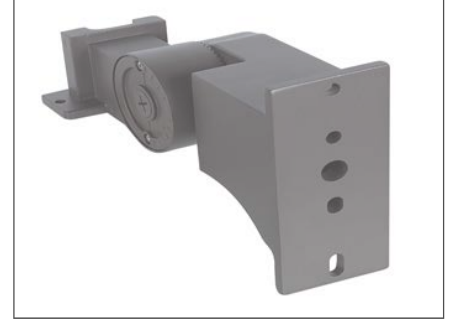
MOUNTING OPTIONS



Slipfitter Mount An optional cast aluminum mast arm adapter secures fixture head to nominal 2"(2-3/8"O.D. pipe size) horizontal steel tenon arm.

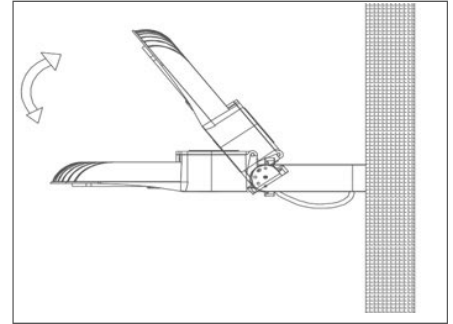
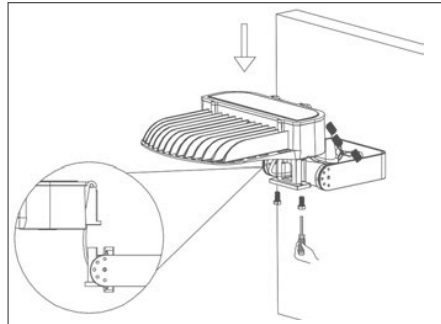
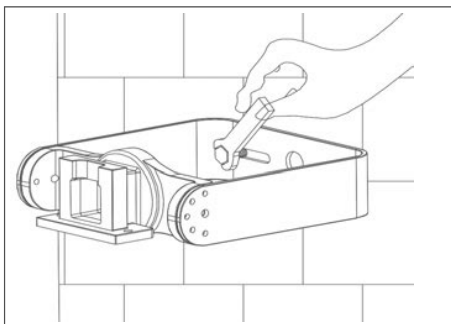
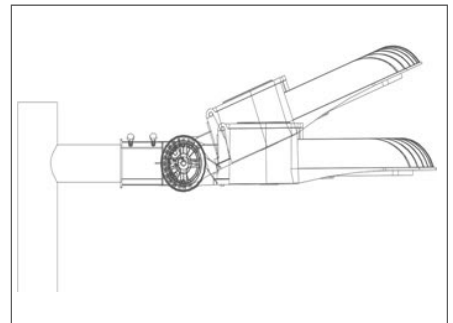
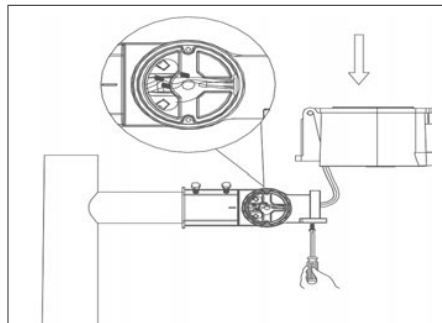
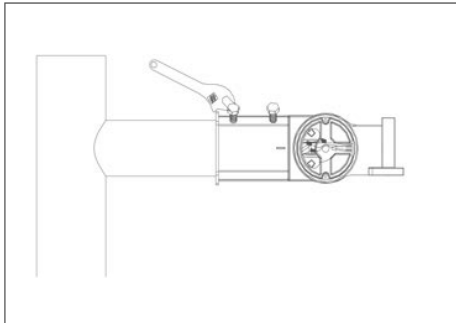


Wall Mount Wall Mount is easy to install for direct wall mounting with 1/2" conduit wiring mounting





Arm Mount 4p and 5p Square and Round poles) Standard versatile mounting arm is simple to install and can be used with existing poles for retrofit installations.

MOUNTING DIMENSIONS

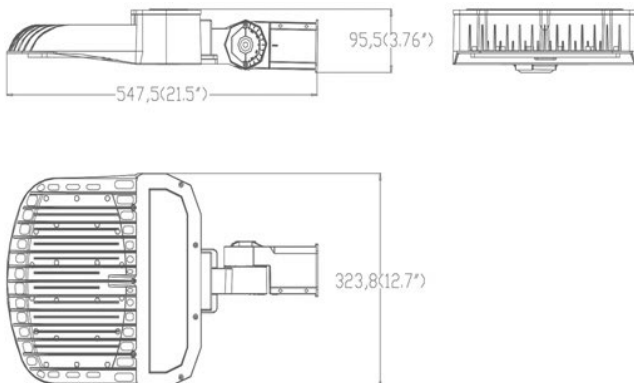


PHOTOCELL & MOTION SENSORS

	<p>Photocell No. LC-10DT Finish: Blue USE: Used for indoor or outdoor LED lamps, working with light sensing principle, the LC-10DT sensor (LC-10DT for 120-277V) is used for Light sensor</p>		<p>SPECIFICATIONS AND CHARACTERISTICS:</p> <ul style="list-style-type: none"> • UL Listed. Reference No.: E178670 Volts & Cover Color • Blue standard for 120-277VAC • Turn-ON Light Level: 10-16 Lux • Turn ON/OFF Ratio: 1:3 to 4 • Time Delay: 3-15 sec • Operating Temperature: -40°C to +70°C • Relay: 15A • MOV Surge Protection: 90J, 160J, 320J, 360J (4 options) • Energy Consumption: Less than 1Watt (120V<0.5W) • Electrical Life: >5000 cycles • Sensor Type: Silicon Photocell • Housing: UV stabilized PC • Failure Mode: Fail ON (standard), Fail OFF (for your option)
---	--	--	---

PRODUCT DIMENSIONS (unit: inch/mm)

100W/150W/200W (Slipfitter Mount)



100W/150W/200W (Wall Mount)

