

doona™ +

User Guide



ECE R44/04

EN 1888:2012

EN 12790:2009

Group 0+

Up to 13kg

Language: English



Important – Keep these instructions for future reference

Table of Contents.

01/	
Vital information / Warnings	4
02/	
Suitability	6
03/	
Product overview	7
04/	
Use modes	9
4.1. Use modes and their purposes	9
4.2. Adjusting the rotation angle of the handle	10
4.3. Transition between modes	11
4.4. On-the-go mode	17
05/	
Securing your baby in the Doona+ Car Seat	19
5.1. Adjusting the shoulder straps (#8) to your baby's height	22
5.2. Rotating the handle (#2)	25
5.3. Loosening the shoulder straps (#8).....	25
5.4. Placing the infant height adjustment pillow (#27).....	26
5.5. Head support (#23)	26
5.6. Securing your baby using the harness	27
5.7. Tightening the straps	29
5.8. Checklist to ensure that your baby is buckled up correctly.....	30

06/	
Use of the Doona+ Car Seat in the vehicle	31
6.1. Securing the Doona+ Car Seat in your vehicle	35
6.2. Checklist to ensure that your Doona+ Car Seat is correctly installed	38
6.3. Removing the Doona+ Car Seat from the vehicle.....	39
07/	
Care instructions	40
7.1. Care for the harness buckle	41
7.2. Cleaning	41
7.3. Sunshade Removal	42
7.4. Seat Cover Removal	43
7.5. Seat Cover Re-fitting	46
7.6. Sunshade Re-fitting.....	52
08/	
Installation on Aircrafts	54
09/	
Two-year warranty	57
10/	
Warranty Card	58

Congratulations.

Congratulations on choosing Simple Parenting's Doona+ as your baby's safety and mobility solution.

In order to protect your baby correctly, the Doona+ Car Seat must always be used and installed as described in these instructions.

Important – Keep these instructions for future reference. Read these instructions carefully, your child's safety may be affected if you do not follow these instructions.

Please always keep the user instructions available in the compartment provided on the child seat.

If you have any further questions regarding its use, please feel free to contact us at:

Simple Parenting

4A, 12 Shipyard Lane, Quarry Bay,

Hong Kong,

Hong Kong

Phone: (852) 3586-1353

Email: info@simpleparenting.co

Website: www.simpleparenting.co

1 / Vital information / Warnings.



WARNING! For the protection of your baby this Doona+ Car Seat is not suitable for the following:

- As a substitute for a cot or a cradle. Carrycots, pushchairs and buggies must only be used to transport babies or children.
- To transport more than one child.
- For commercial use.



WARNING!

In a case of car accident violent stresses occur, if you were involved in a car accident we recommend you to change the device.



WARNING!

Do not make any alterations or additions to the Doona+ Car Seat.

**WARNING!**

Do not use this product if any components are broken or missing.

**WARNING!**

Any luggage or other objects liable to cause injuries in the event of a collision shall be properly secured.

**WARNING!**

Never leave your child unattended.

**WARNING!**

This product is not suitable for running or skating.

**WARNING!**

Do not let your child play with this product.

**WARNING!**

When outside of the car, always use the parking brake when placing and removing the child from the Doona+ Car Seat, or when standing still.

2/ Suitability.

The Doona+ Car Seat is intended for Rear-Facing use only.

Group: 0+

Weight: Up to 13 kg

This Doona+ vehicle is intended for children from birth and up to 13 kg.

Safety Information



WARNING! DO NOT use the Doona+ Car Seat if any of the following applies:

- The child exceeds 13 kg in weight



minimum
2.5 cm (1")

- The top of the head is less than 2.5 cm from the top of the Doona+ Car Seat shell. (See figure to the left)



- The harness straps are in slots higher than child's shoulders height. (See figure to the left)

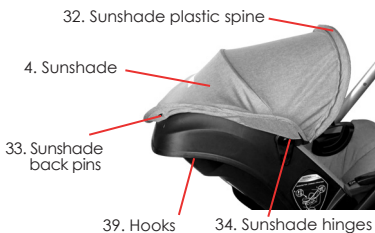
Certification – Approval Mark

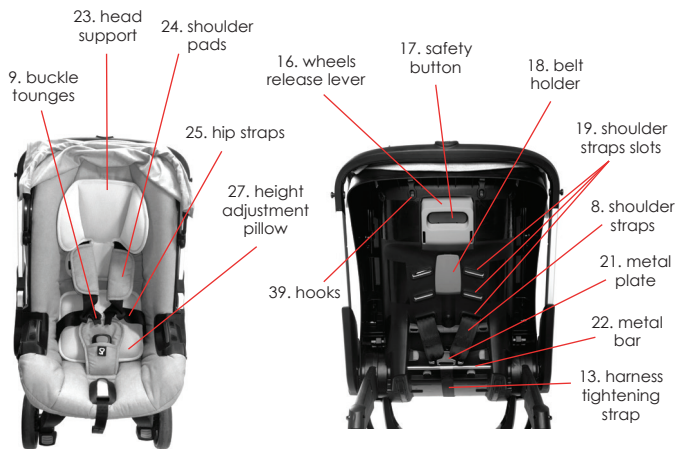
ECE R44/04
Universal
0-13 kg



0444 4311

3 / Product overview.





4/ Use modes.

4.1 Use modes and their purposes



Car seat mode

When travelling in a vehicle, always use the Doona+ Car Seat mode.

(See chapter #6 of this manual, for instructions regarding securing and releasing in the vehicle).



Pull-along mode

Use the pull along mode for maneuvering the product easily while walking or seating next to it.

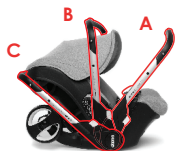


On-the-go mode

Use the on-the-go mode when you leave the vehicle and wish to walk around with your baby.

4.2 Adjusting the rotation angle of the handle

You can engage the handle (#2) in three positions:



- A. Press the handle rotation buttons (#5) on both sides simultaneously.
- B. With the handle rotation buttons (#5) pressed, begin rotating the handle (#2) towards the desired position.
- C. Make sure the handle does not rotate further than the desired position (A, B or C).
- D. Let go of the handle rotation buttons (#5) and rotate the handle further more until it is engaged on both sides in the desired position and locked in place. You should hear a "click" sound.



4.3. Transition between modes



WARNING!

Ensure that all the locking devices are engaged before use.



WARNING!

To avoid injury ensure that your child is kept away when unfolding and folding this product.

When folding and unfolding the Doona+, ensure that your child is either restrained with the harness (arms and legs are kept away from moving parts), or kept away when not seated.

From car seat mode to on-the-go mode

A. Press the handle rotation buttons (#5) on both sides simultaneously, and rotate the handle (#2) to the top position (B).



B. Release the Doona+ Car Seat from the vehicle belt (See chapter #6 of this manual, for instructions regarding securing and releasing of the Doona+ Car Seat in the vehicle).



C. Carry the Doona+ Car Seat out of the car and then hold it with one hand.

D. With the other hand push in the red safety button (#17), and squeeze the wheels release lever (#16), to release the wheels mechanism. The wheels will unfold.



*As an alternative to stages c-d: you can take the Doona+ Car Seat out of the car and place it on the ground, and then push in the red safety button (#17), and squeeze the wheels release lever (#16), to release the wheels mechanism. In this option, you have to lift the Doona+ Car Seat up while still squeezing, to allow the wheels to unfold.

E. Press the handle rotation buttons (#5) on both sides simultaneously, and rotate it to the on-the-go position (#A).



F. Press the handle extension button (#1), and pull the handle towards you, to extend its length.



From on-the-go mode to car seat mode

A. Press the handle extension button (#1), and push down the handle (#2), to return the handle to its shortest mode.



B. Press the handle rotation buttons (#5) on both sides simultaneously and rotate the handle (#2) to the top position (B).



C. Step on the red brake lock pedal (#14) to lock it. Alternatively, place your foot in front of the wheel to block its movement.



D. Hold the Doona+ Car Seat by the handle with one hand, and with the other hand push in the red safety button (#17), and squeeze the wheels release lever (#16).



E. While squeezing, lean the Doona+ Car Seat against the rear wheels (#7), until they start to fold, and then lower it all the way to the ground, until the wheels are fully folded and locked in place.



F. Lift the Doona+ Car Seat by the handle (#2), and place it in the vehicle.

G. Secure the Doona+ Car Seat in the vehicle (See chapter #6 of this manual, for instructions regarding securing and releasing of the Doona+ Car Seat in the vehicle).

H. Press the handle rotation buttons (#5) on both sides simultaneously, and rotate it to position A.



4.4. On-the-go mode

Rear Brakes

The rear wheels are fitted with a braking system which allows you to use just one pedal to control both the rear wheels. To apply the brakes, press the red brake lock pedal (#14) located next to the right wheel. To release the brakes, the green brake release pedal (#15) located next to the left wheel. The brake must always be on when putting the child in or taking him out. Always use the parking brake when placing and removing the child, or when standing still even for a few moments! Always check that the brake is fully engaged.



15. break
release pedal
(green)

14. break
lock pedal
(red)



WARNING!

Ensure that all the locking devices are engaged before use.

Use of load carrying accessories

Two load carrying accessories are available for purchase with Doona+:



All-Day Bag



Essentials Bag

**WARNING!**

Do not overload the All-Day bag with weights of over 3 kg.

Do not overload the Essentials bag with weights of over 1.5 kg.

Exceeding these limits may compromise the stability of the stroller and cause it to topple over. Load carrying accessories which are not approved by the manufacturer should not be used.

**WARNING!**

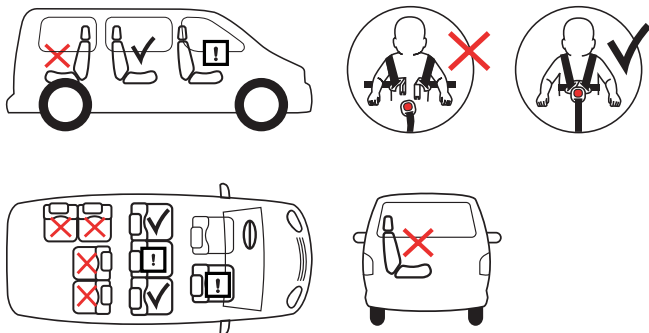
Any load attached to the handle affects the stability of the Doona+ vehicle.

Important note: You must remove all bags from the Doona+ vehicle before folding the wheels and transferring to Car Seat mode.

5 / Securing your baby in the Doona+ Car Seat.

!	on front passenger seat without front airbag	yes
✓	on outer rear seat	yes
!	on centre rear seat with 3-point-belt	yes
✗	on a rearward-facing seat	no
✗	on seats facing sideways	no

Please observe the regulations applicable to your particular country.



WARNING!

For the protection of your baby:

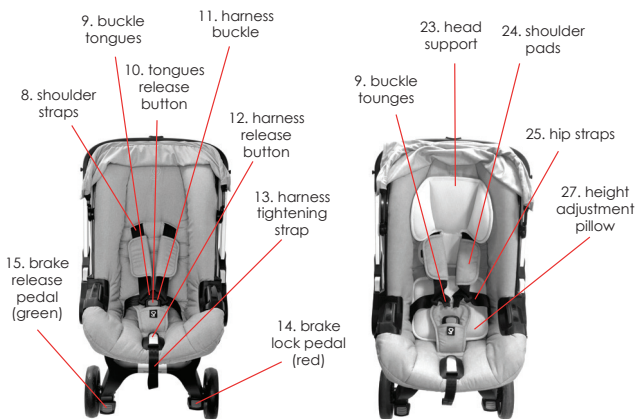
- Always secure your baby in the Doona+ Car Seat using the restraint system.
- As a general rule: When used in the car, the more snugly the belt fits over your child's body, the safer your child will be. Make sure the belt fits tightly when used in the car.
- Please notice the belt is tight and not twisted.
- It is recommended that children will not be left unattended in the Doona+ Car Seat.
- It is dangerous to use this Doona+ Car Seat on an elevated surface, e.g. a table.



WARNING!

- Never allow the harness tightening strap (#13) to become caught in moving parts (e.g. automatic doors, escalators, etc.).
- The metal and plastic parts of the Doona+ Car Seat can heat up in the sun. **WARNING!** Your child may get burnt. Protect your child and the Doona+ Car Seat against intense sunlight (e.g. by putting a light cloth over the seat).
- It is recommended to take the baby out of the seat frequently in order to relieve the baby's spine, both inside and outside of the car. Please note it is recommended to take frequent breaks during long journeys.
- The Doona+ vehicle does not replace a cot or a bed. Should your child need to sleep, then it should be placed in a suitable pram body, cot or bed.
- This product is not intended for prolonged periods of sleeping.
- When using the Doona+ as a Reclining Cradle, Do not use the Doona+ once your child can sit unaided.

5.1. Adjusting the shoulder straps (#8) to your baby's height



First time you use the Doona+ Car Seat and as your baby grows, you need to adjust the shoulder straps (#8) to your baby's height as follows:



- When the shoulder straps (#8) are adjusted correctly, they go through the shoulder strap slots (#19) at shoulder level or slightly below.
- Place the baby in the Doona+ Car Seat and locate the correct shoulder strap slots (#19) for your baby's height. Then take your baby out of the Doona+ Car Seat.
- At the back of the Doona+ Car Seat, disconnect the shoulder straps (#8) from the metal plate (#21).
- Insert the shoulder straps (#8) to the correct slots (#19).
- Reconnect the straps to the metal plate (#21).



WARNING!

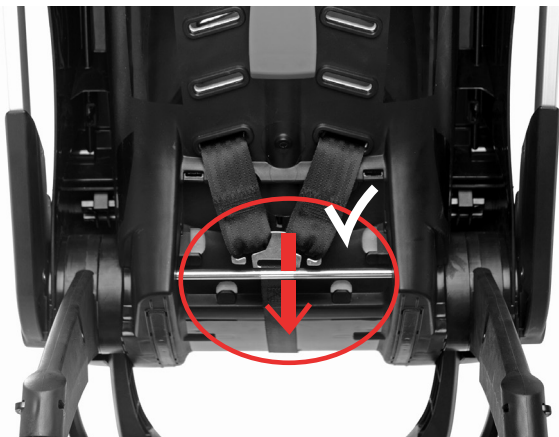
Ensure that all straps are not twisted and that the shoulder straps (#8) are correctly inserted in the shoulder strap slots (#19). See the image below for correct assembly.

**WARNING!**

Ensure that the shoulder straps (#8) are correctly reconnected to the metal plate (#21). See the image below for correct assembly.

**WARNING!**

Ensure that the shoulder straps (#8) are assembled to the metal plate (#21) in a way that all of them are located between the metal bar (#22) and the seat body. No part should go over the metal bar (#22). See the image below for correct assembly.



5.2. Rotating the handle (#2)

Rotate the handle to the C position



5.3. Loosening the shoulder straps (#8)

Press the harness release button (#12) and at the same time pull both shoulder straps (#8) towards you. For small-sized infants please notice the following stages 5.4 and 5.5.



5.4. Placing the infant height adjustment pillow (#27)

Place the infant height adjustment pillow (#27) in the lowest part of the seat. The shoulder straps (#8) should go through the slots (#19) at shoulder level or slightly below. When the shoulder straps can go through the slots at shoulder level or slightly below without using the infant height adjustment pillow, the pillow can be removed.



< 5 kg
11 lbs

This infant height adjustment pillow is intended for newborns only.



Remove the infant height adjustment pillow when your child's shoulders are above the lowest shoulder strap slots, when sitting in the car seat without the infant height adjustment pillow.

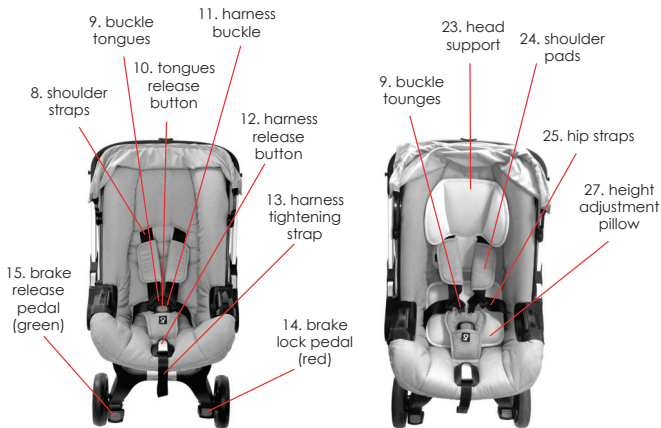
Keep using the head support after removing the infant height adjustment pillow as long as you carry your child in the car seat.

5.5. Head support (#23)

- Ensure the head support straps are wrapped around the shoulder straps (#8) and connected to the button snaps, at the back of the head support.
- The head support (#23) should be adjusted so that the shoulder straps (#8) are at the same level as your baby's shoulders or slightly below.

5.6. Securing your baby using the harness





- Loosen the shoulder straps (see chapter #5.3)
- Release the buckle tongues (#9) from the harness buckle (#11) by pressing the tongues release button (#10).
- Place your baby in the Doona+ Car Seat.
- Place the shoulder straps (#8) over the shoulders of your baby.

**WARNING!**

The hip straps (#25) must lie as low as possible over your baby's hips.

- We recommend not to use the shoulder straps without the shoulder pads.

**WARNING!**

Do not twist or interchange the shoulder straps (#8).

- Put the two buckle tongues (#9) together and engage the buckle tongues (#9) in the harness buckle (#11) with an audible CLICK!
- Make sure that the head support (#23) is positioned correctly.
- Tighten the straps until they are in contact with your baby's body. (see next chapter #5.7)

5.7. Tightening the straps

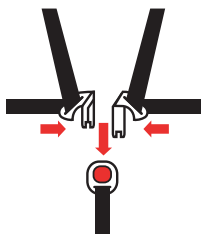
Pull the harness tightening strap (#13) until the harness lies flat and is in contact with your baby's body.



! WARNING!

There should never be more than one finger's width of space between the shoulder straps and your baby's shoulders.

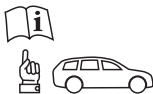
5.8. Checklist to ensure that your baby is buckled up correctly

**! FOR YOUR BABY'S SAFETY CHECK THE FOLLOWING**

- The shoulder straps (#8) of the Doona+ Car Seat are close to the body without constricting the child.
- The shoulder straps (#8) are adjusted correctly, the straps are not twisted.
- The buckle tongues (#9) are engaged in the harness buckle (#11).

6 / Use of the Doona+ Car Seat in the vehicle.

Please observe the instructions on the use of child restraint systems described in your vehicle owner's manual.



WARNING!

In an accident, enormous forces occur. Never try to secure a child on your lap with the vehicle seat belt or by holding onto them.



Secure your child in the Doona+ Car Seat for every journey!

Always secure the Doona+ Car Seat onto the vehicle seat in a rearward-facing position.



WARNING!

An airbag hitting the Doona+ Car Seat can cause serious injuries to your child, possibly resulting in death.

! DO NOT use on a passenger seat with a front airbag!

For seats with side airbags, please observe the instructions in your vehicle owner's manual.

! WARNING!

We advise you that all the rigid items and plastic parts of the Doona+ Car Seat must be located and installed so that they are not liable, during everyday use of the vehicle, to become trapped by a movable seat or in a door of the vehicle.

The Doona+ Car Seat is approved for use with the vehicle's 3-point belt (universal)

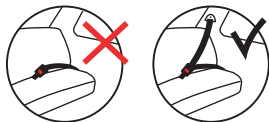
This manual includes detailed instructions only regarding installation without a base.

*For detailed instructions regarding use with a base, refer to the user manual provided with the base, in case you have purchased one.



Fastening the Doona+ Car Seat to the vehicle using a base is based on semi-universal approval. The seat may only be used with a base in the vehicles detailed in the list of approved vehicle types enclosed with the base, should you decide to purchase a base. This list is constantly updated.

The latest version can be obtained from www.simpleparenting.co



Installation with the vehicle's 3-point belt (universal)



WARNING!





The use of a 2-point belt substantially increases the risk of injury to your child in the event of an accident.



Always use with an approved 3-point belt.

The vehicle safety belt must be approved to ECE R 16 or a comparable standard (see test label on belt with an "E" or "e" in a circle).

Follow these instructions when using your Doona+ Car Seat:

	in the direction of travel	no
	against the direction of travel	yes
	with 2-point belt	no
	with 3-point belt	yes



Please do not leave your child unattended in the Doona+ Car Seat in the vehicle.



For the protection of all vehicle occupants

In the case of an emergency stop or an accident, unsecured persons or objects may cause injury to other vehicle occupants. Please always check that...

- The backrests of the vehicle seats are locked (i.e. that a foldable rear seat bench latch is engaged).
- All heavy or sharp-edged objects in the vehicle (e.g. on the parcel shelf) are secured.
- All persons in the vehicle have their seat belts fastened.
- The Doona+ Car Seat is always secured when it is in the vehicle, even if no child is being transported.

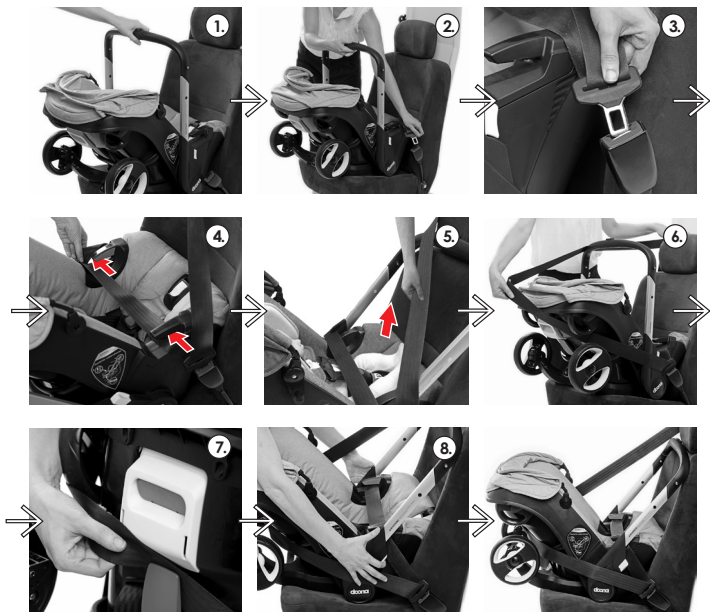
To protect your vehicle

Some vehicle seat covers made from sensitive materials (e.g. velour, leather, etc.) may develop wear marks when car seats are used. This can be avoided by placing the vehicle seat cover under the Doona+ Car Seat.

6.1. Securing the Doona+ Car Seat in your vehicle



To secure the Doona+ Car Seat using the 3-point belt of your vehicle proceed as follows:





STEP 1: Place the Doona+ Car Seat rearward-facing on the vehicle seat (baby is facing backwards).

Note: Installation of the Doona+ Car Seat in the front seat of the vehicle is not recommended, yet possible. Should you decide to install your Doona+ Car Seat in the front, move the front seat of the vehicle all the way back before proceeding to the next steps. Once completing the installation according to below instructions, take the seat forward.

STEP 2: Ensure that the handle (#2) is in the upright position B.

STEP 3: Engage the vehicle seat belt buckle tongue (#30) in the vehicle seat buckle (#31).

STEP 4: Place the lap belt section of the vehicle seat belt (#29) in the blue belt guides (#3) on both sides of the Doona+ Car Seat.



WARNING!

Do not twist the belt.

STEP 5: Tighten the lap belt section of the vehicle seat belt (#29) by pulling on the diagonal strap (#28).



WARNING!

The vehicle seat buckle (#31) must not be positioned in the blue belt guide (#3) or reach so far forward that it lies in front (in the direction of travel) of the blue belt guide (#3).

Note: Should this be the case, try it on a different seat. If you have any doubts about installation, please feel free to contact us.

STEP 6: Pull the diagonal strap of the vehicle seat belt (#28) behind the head end of the Doona+ Car Seat.

STEP 7: Place the diagonal strap of the vehicle seat belt (#28) between the blue belt holder (#18) and the Doona+ Car Seat.



WARNING!

Do not twist the belt.

Tighten the diagonal strap section of the vehicle seat belt (#28).

STEP 8: Rotate the handle (#2) to the car seat position A (for instructions on how to rotate the handle see chapter (#4.2)).



WARNING!

Do not use any load bearing contact points other than those described above and marked on the Doona+ Car Seat.

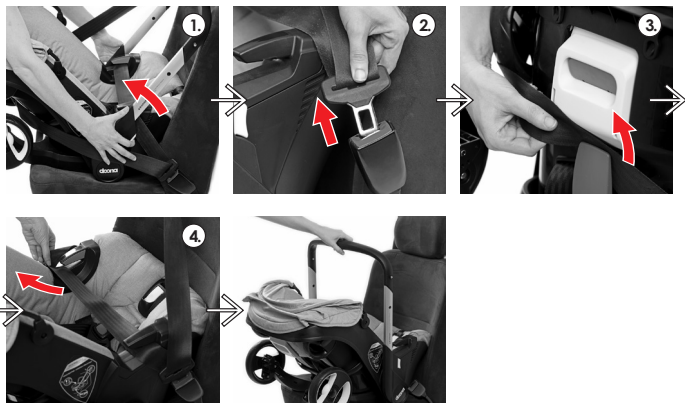
6.2. Checklist to ensure that your Doona+ Car Seat is correctly installed



For your baby's safety, check that:

- The Doona+ Car Seat is fastened against the direction of travel.
- The Doona+ Car Seat is installed on the front passenger seat only if no front airbag exists, or if the airbag has been disabled.
- The Doona+ Car Seat is secured using a 3-point belt only.
- The lap belt section of the vehicle seat belt (#29) runs through both blue belt guides (#3) on the Doona+ Car Seat.
- The diagonal strap section of the vehicle seat belt (#28) runs between the blue belt holder (#18) and the Doona+ Car Seat.
- The vehicle seat buckle (#31) is not positioned in the blue belt guide (#3), or before the blue belt guide (#3).
- The vehicle seat belt is tightened up and not twisted.

6.3. Removing the Doona+ Car Seat from the vehicle



STEP 1: Rotate the handle (#2) to the car seat position B (for instructions on how to rotate the handle see chapter (#4.2).

STEP 2: Discharge the vehicle seat buckle (#31).

STEP 3: Unhook the diagonal strap of the vehicle seat belt (#28) from the blue belt holder (#18).

STEP 4: Take the lap belt section of the vehicle seat belt (#29) out of the blue belt guides (#3).

7 / Care instructions.



To retain the protective effect

- In an accident at a collision speed above 10 km/h the Doona+ Car Seat could suffer damage which is not necessarily obvious. In this case the car seat must be replaced. Please dispose of it properly.
- Regularly check all important parts for damage. Ensure the correct operation of all mechanical components.
- To prevent damage or breakage, ensure that the Doona+ Car Seat does not become jammed in the car door, seat runners, etc.
- Should the Doona+ Car Seat be damaged (for example after dropping it) it must be inspected.
- The Doona+ Car Seat must not be used without the seat cover
- Never use spare parts or accessories other than those supplied – never replace the seat cover with any other than the original Doona+ seat cover, because the cover constitutes an integral part of the restraint performance.

7.1. Care for the harness buckle



WARNING!

Only the following cleaning procedure should be used. Deviation from this procedure may result in injury or death.

- 1. RINSE WITH WARM/HOT WATER ONLY.** For easy cleaning: Remove the tongues from the buckle. No need to remove the crotch strap from the seat. Repeatedly dunk the buckle in a cup of warm water, maximum 60 °C. The water movement will flush the contaminants out of the buckle.
- 2. DETERGENTS, CLEANSERS, SOLVENTS AND HOUSEHOLD CLEANERS SHALL NOT BE USED.** These substances may affect the performance of the buckle and may result in injury or death.
- 3. NEVER USE TOOLS TO PROBE INSIDE THE BUCKLE nor HOT AIR DRYERS.** Damage to the buckle may occur resulting in reduced performance that may result in injury or death.
- 4. NEVER APPLY LUBRICANTS TO THE BUCKLE.** Damage to the buckle may occur resulting in reduced performance that may result in injury or death.

7.2. Cleaning

Always use only genuine Doona+ Car Seat fabric covers, since the seat cover is an integral part of the Doona+ Car Seat system. Using the original seat covers helps to maintain a safe and functioning system.



The Doona+ Car Seat must not be used without the seat cover.

- The seat cover can be removed and washed with a mild detergent. Follow these washing instructions to avoid damage to the seat cover: Machine wash, cold; Do not bleach; Do not tumble dry; Hang dry; Do not wring; Do not iron; Do not dry clean. Please observe the instructions on the washing label of the cover. The same washing instructions should be followed when washing the sunshade as well.

- The plastic parts can be cleaned using soapy water. Do not use harsh cleaning agents (such as solvents).



WARNING!

Never remove the buckle tongues (#9) from the straps.

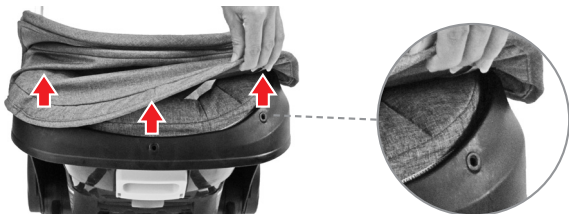
For instructions on how to remove and re-fit the fabric set, watch the video:

www.simpleparenting.co/accessories/fabric-set



7.3 Sunshade Removal

STEP 1: Pull out the 3 sunshade back pins (#33) at the back of the sunshade (#4).



STEP 2: Pull out the sunshade spine (#32) from the sunshade hinges (#34).



STEP 3: Remove the fabric from the spine.

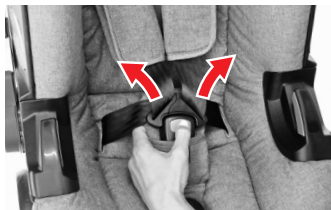


7.4 Seat Cover Removal

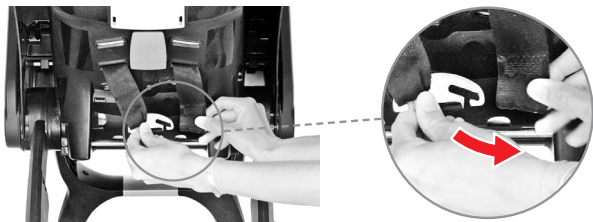
STEP 1: Loosen the Shoulder Straps (#8) completely.



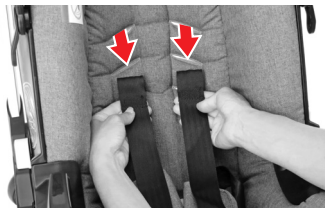
STEP 2: Release the Harness Buckle (#11).



STEP 3: Disconnect the shoulder straps (#8) from the metal plate (#21) located at the back of the car seat.



STEP 4: Pull out the shoulder straps (#8) from the front and remove the shoulder pads (#24) from them.



STEP 5: Release the seat cover from the 4 hooks (#39) behind the head area of the car seat.



STEP 6: Snap out the side pins (#36) of both sides of the seat cover.



STEP 7: Remove the seat cover from around the belt guide (#3).



STEP 8: Snap out the belt guide pins (#37) and the lower pin (#38) of the seat cover.



STEP 9: Pull up the seat cover from around the harness release button (#12) and the harness buckle (#11) to remove the seat cover completely.



7.5 Seat Cover Re-fitting



WARNING!

Ensure that all straps are not twisted and that the shoulder straps (#8) are correctly inserted in the shoulder strap slots (#19). See the image below for correct assembly.



WARNING!

Ensure that the shoulder straps (#8) are correctly reconnected to the metal plate (#21). See the image below for correct assembly.



WARNING!

Ensure that the shoulder straps (#8) are assembled to the metal plate (#21) in a way that all of them are located between the metal bar (#22) and the seat body. No part should go over the metal bar (#22). See the image below for correct assembly.

STEP 1: Thread the shoulder straps (#8) through the slots in the lap area of the seat cover.



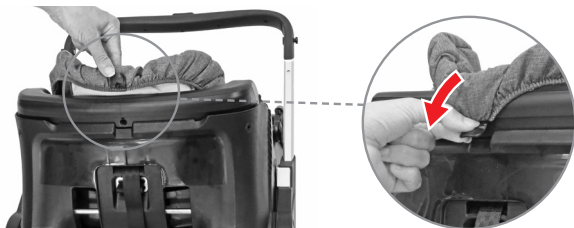
STEP 2: Thread the harness buckle (#11) through the designated slot in the seat cover and pull it out from the other side.



STEP 3: Re-fit the seat cover around the harness release button (#12).



STEP 4: Tuck in the lower pin (#38) at the bottom of the car seat.



STEP 5: Tuck in the belt guide pins (#37) on both sides.



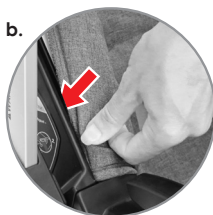
STEP 6: Tuck in the seat cover around the bottom part of the car seat.



STEP 7: Tuck in the seat cover around the belt guides (#3) on both sides.



STEP 8: Tuck in the side pins (#36) on both sides of the car seat body.

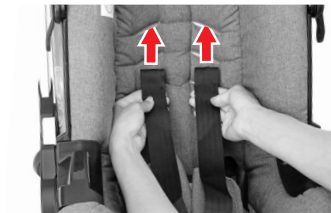


STEP 9: Thread the 4 rings (#35), attached to the head area of the seat cover, through the slots in the upper part of the car seat, and attach them to the hooks (#39).



STEP 10: Thread the shoulder straps (#8) through the appropriate shoulder strap slots (#19).

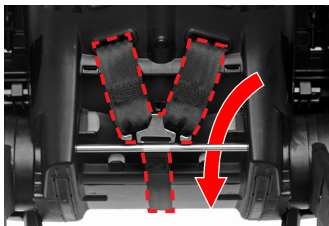
IMPORTANT! Shoulder straps must be routed at the same height or slightly below the child's shoulders.



STEP 11: Reconnect the shoulder straps to the metal plate (#21) at the back of the car seat.

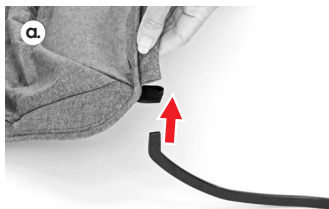
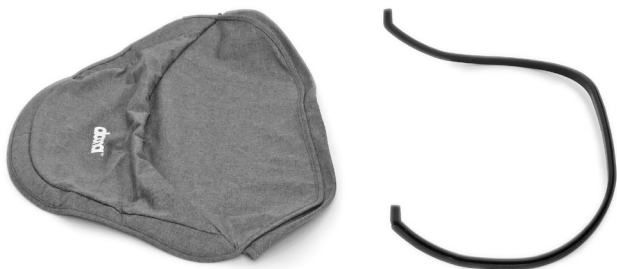
IMPORTANT! Make sure straps are not twisted.

IMPORTANT! The shoulder straps, attached to the metal plate, **MUST** be routed **BETWEEN** the metal bar and the seat body.



7.6 Sunshade Re-fitting

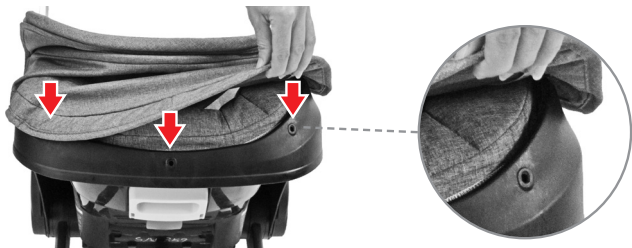
STEP 1: Re-fit the fabric on the sunshade spine (#32).



STEP 2: Hook in the sunshade spine (#32) into the sunshade hinges (#34).



STEP 3: Reconnect the 3 sunshade pins (#33) at the back of the sunshade (#4).



8 / Installation on Aircrafts.

1 / Introduction

Simple Parenting strongly recommend that children up to 35 lbs (13 Kg) use a certified harnessed child restraint or other device approved for aircraft travel. Doona™ Infant Car Seat (group 0+) can also be used in an aircraft to ensure a safe flight of a baby on an airplane. When installing Doona™ Infant Car Seat on an airplane, install it the same way as Carrier installation with Vehicle Seat Belt/Lap Belt only routing method.

2 / Certification



Doona™ Infant Car Seat is approved for use in aircrafts by TUV Rheinland global aviation experts.

TUV Rheinland adhere to current standards, measurements and functionality requirements of National and International regulatory associations and international aviation authorities.

3/ General Safety Instruction

Please read the following instructions for installing Doona™ Infant Car Seat on the airplane carefully before attempting to install. Incorrect installation can endanger the life of your baby.



Before arriving to the airplane with Doona™ Infant Car Seat, please contact the airline regarding suitability and transport conditions or visit www.TUV.com for more information.



The use of Doona™ Infant Car Seat is allowed only on a plane with a 2-point seat belt.



The child seat may only be installed on these aircraft seats approved by the aircraft operator.



Use only on a forward facing aircraft seat.



Use only rearward installation direction when installing Doona™ Infant Car Seat.



The Infant Car Seat may not be installed within the effective range of an airbag.



Adjust the Infant Car Seat to the size of your child in accordance with the recommendations in the instruction manual of the Infant Car Seat.



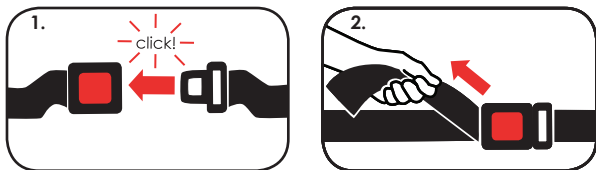
Do not use this restraint if a secure installation cannot be achieved.



Doona™ Infant Car Seat always has to be secured with the safety belt, even when the "Fasten your seat belt" signal is switched off. An unsecured child seat could injure passengers in case of an accident, turbulences or an emergency landing.

4/ Installation

- A.** Place Doona™ Infant Car Seat on the respective seat on the plane in a rearward facing position.
- B.** Folding the arm rests upwards could facilitate the installation of your Doona+ Infant Car Seat.
- C.** Feed both ends of the lap belt through the belt guides of Doona™ Infant Car Seat.
- D.** Make sure that the belts are not twisted!
- F.** Now, close the belt buckle (**illustration #1**) and tighten the belt (**illustration #2**).



5/ Removing the Infant Car Seat

Unfasten the lap belt according to the instructions of the airline company.



WARNING! DO NOT use base with aircraft installation. Only the carrier is certified for aircraft use. Inflatable seat belts are not compatible with this child restraint.

9 / Two-year warranty.

We guarantee that the Doona+ Car Seat has been manufactured in accordance with the European safety standards and regulations, and is meeting the highest standards of quality.

For the Doona+ Car Seat we provide a 2-year warranty against manufacturing or material defects.

The warranty period is effective from the day of purchase.

As proof of purchase we ask that you fill out the Warranty Card and retain it for the whole term of the warranty period, together with your sales receipt.

In the case of a warranty claim, the Warranty Card must be returned together with the product to your local distributor.

Please also register your Doona+ Car Seat online at:
www.simpleparenting.co

The Warranty covers Doona+ Car Seats which have been handled properly and which have been sent to us in a clean condition.

The warranty does not apply in the following cases:

- Natural signs of wear and damage resulting from excessive stress.
- Damage resulting from inappropriate or improper use.
- When the product has been used for a purpose other than that provided for in the instructions for use.

In the event of a warranty claim, please contact us directly at info@simpleparenting.co

10 / Warranty Card.

Warranty Card:

Name: _____

Address: _____

Post Code: _____

City/Town: _____

Telephone No. (Including area code): _____

E-mail address: _____

Doona+ Car Seat serial number: _____

Retailer: _____

Fabric color (design): _____

Accessories: _____

