

Certified Pool Operator (CPO) Review Quiz

74 plays · 445 players

A public kahoot

Questions (14)

1 - Quiz

The CPO certificate will be issued by



- National Swimming Pool Foundation (NSPF) ✗
- Pool & Hot Tub Alliance (PHTA) ✓
- Pool & Hot Tub Council of Canada (PHTCC) ✗
- Association of Pool & Spa Professionals (APSP) ✗

2 - True or false

CHAPTER 5: Salt water pools do not contain chlorine.



- True ✗
- False ✓

3 - Quiz

CHAPTER 8: What kind of water test is this?



- Colormetric ✗
- Titrimetric ✓
- Phenol Red ✗
- FAS-DPD ✗

4 - Quiz

CHAPTER 9: What kind of chemical feeder is this?



- Peristaltic pump ✗
- Chlorine feeder ✗
- Erosion feeder ✓
- Stock pot system ✗

5 - Quiz

CHAPTER 1: If a customer gets hurt at your aquatic facility, it could be -



- Negligence ✓
- Poor planning ✗
- Liability ✗
- An accident ✗

6 - True or false

CHAPTER 6: Chlorine is a factor of water balance.



- True ✗
- False ✓

7 - Quiz

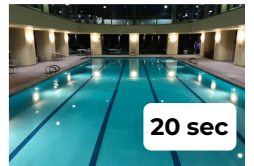
CHAPTER 6: What product does not lower the pH of water?



- Sodium Bisulfate ✗
- Carbon Dioxide ✗
- Muriatic Acid ✗
- Sodium Bicarbonate ✓

8 - Quiz

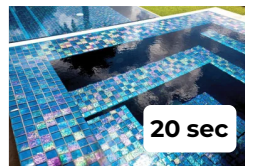
CHAPTER 5: What does Cyanuric Acid (CyA) do?



- Clarifies water ✗
- Improves efficacy of chlorine ✗
- Stabilizes against sunlight ✓
- Improves water flow ✗

9 - Quiz

CHAPTER 7: Another way to describe Combined Chlorine (CC) is



- Total Chlorine ✗
- Chloramines ✓
- All chlorine ✗
- Superchlorinate ✗

10 - True or false

CHAPTER 5: All forms of chlorine raise pH



True



False



11 - Quiz

CHAPTER 5: What product removes (neutralizes) chlorine?



Sodium Sesquicarbonate



Sodium Thiosulfate



Sodium Carbonate



Sodium Bisulfate



12 - Quiz

What two chemicals must never be mixed?



Chlorine & acid



Acid & soda ash



Chlorine & bisulfate

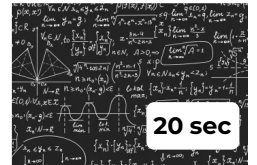


Chlorine & sodium thiosulfate



13 - Quiz

CHAPTER 7: What is not information you need to calculate chemical dosing?



- Pool volume ✗
- Water factor ✓
- Desired change ✗
- Product/Chemical dose ✗

14 - True or false

CHAPTER 8: Don't take a water sample from the top 12"/30 cm of water because it's contaminated.



- True ✓
- False ✗