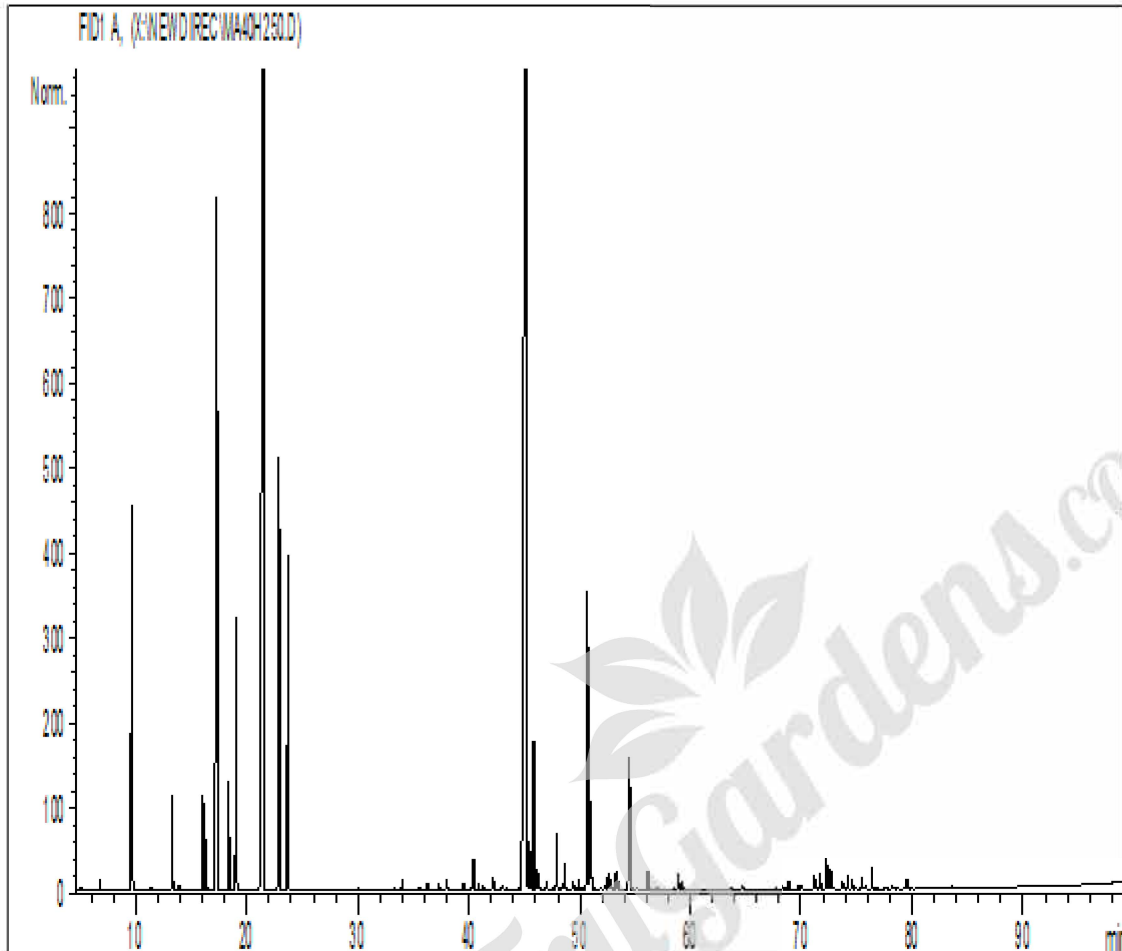


GCMS ANALYSIS

PRODUCT NAME: Tea Tree Organic Essential Oil

DATE: July 20, 2016



*Due to volume turnover, this report is not lot specific. It is representative of the quality of this oil produced by the manufacturer of this product. Specific lots may vary slightly as is the case in natural products.*

Peak	RT (min)	Compound name	%
1	5.1	ISOBUTANAL	0,01
2	6,6	ISOVALERALDEHYDE	0,02
3	6,8	ETHANOL	0,05
4	9,6	$\alpha$ -PINENE	2,58
5	9,7	$\alpha$ -THUYENE	0,91
6	11,4	CAMPHERE	0,02
7	13,3	$\beta$ -PINENE	0,72
8	13,9	SABINENE	0,04
9	16,1	$\beta$ -MYRCENE	0,77
10	16,4	$\alpha$ -PHELLANDRENE	0,42
11	17,3	$\alpha$ -TERPINENE	8,49
12	18,4	LIMONENE	0,91
13	19,1	1,8-CINEOLE	2,79
14	21,5	$\gamma$ -TERPINENE	20,47
15	22,9	$p$ -CYMENE	4,07
16	23,7	TERPINOLENE	3,31
17	25,7	3-HEXEN-1-OL ACETATE	0,01
18	30,0	3-HEXEN-1-OL	0,02
19	31,3	1,3,8-MENTHATRIENE	0,01
20	33,3	MENTHATRIENE ISOMER	0,02
21	33,8	MENTHATRIENE ISOMER	0,02
22	34,0	$\alpha$ - $p$ -DIMETHYLSTYRENE	0,09
23	34,2	MENTHATRIENE ISOMER	0,01
24	35,5	Trans-THUYANOL	0,04
25	35,7	$\alpha$ -CUBEBENE	0,02
26	36,3	SESQUITERPENE	0,08
27	37,0	BICYCLOLEMENE	0,01
28	37,3	SESQUITERPENE	0,07
29	38,0	$\alpha$ -COPAENE	0,13
30	39,5	CAMPHOR	0,08
31	39,7	DILL ETHER	0,01
32	40,2	SESQUITERPENE	0,03
33	40,4	$\alpha$ -GURJUNENE	0,36
34	40,8	LINALOOL	0,07
35	41,2	Cis-THUYANOL	0,02
36	41,3	$\beta$ -MAALIENE	0,05
37	42,1	SESQUITERPENE	0,02
38	42,2	Trans- $p$ -MENTH-2-EN-1-OL	0,11
39	43,0	TERPINEN-1-OL	0,04
40	43,1	SESQUITERPENE	0,02
41	43,4	SESQUITERPENE	0,02
42	43,8	SESQUITERPENE	0,01
43	44,6	$\beta$ -ELEMENE	0,03
44	45,3	TERPINENE-4-OL	40,67
45	45,4	$\beta$ -CARYOPHYLLENE	0,38

#### Disclaimer & Caution

Please refer to the Material Safety Data Sheet (MSDS) and all other relevant technical information specific to the product, prior to use. The user of this product is solely responsible for determining the suitability of the product for their particular use and to be in compliance with all laws and regulations applying to the use of this product. TruGardens shall not be held responsible for any damages or for any adverse physical effects (including injury or bodily harm) caused by insufficient knowledge, wrongful application or the improper handling or use of this product. As the ordinary or otherwise use(s) of this product is outside the control of New Directions Aromatics Inc., no representation or warranty, expressed or implied is made as to the effect(s) of such use(s) (including damage or injury), or the results obtained. The information on the TruGardens website is obtained from current and reliable sources but makes no representation as to its comprehensiveness or accuracy. The liability of TruGardens is limited to the value of the goods and does not include any consequential loss. TruGardens shall not be liable for any errors or delays in the content, or for any actions taken in reliance thereon.

Peak	RT (min)	Compound name	%
46	45.5	SESQUITERPENE	0.18
47	45.6	SELINA-3,7-DIENE	0.15
49	45.8	AROMADENDRENE	1.03
49	45.9	SESQUITERPENE	0.12
50	46.1	SATIVENE	0.10
51	46.2	Cis-p-MENTH-2-EN-1-OL	0.05
52	46.3	GURJUNENE ISOMER	0.14
53	47.0	CADINA-3,5-DIENE	0.08
54	47.6	SESQUITERPENE	0.03
55	47.9	ALLO-AROMADENDRENE	0.54
56	48.4	GURJUNENE ISOMER	0.06
57	48.6	ZONARENE	0.26
58	49.3	$\alpha$ -HUMULENE	0.09
59	48.5	Cis-PIPERITOL	0.03
60	49.6	SESQUITERPENE	0.03
61	49.9	$\gamma$ -SELINENE	0.09
62	50.0	NERAL	0.01
63	50.4	$\gamma$ -MUUROLENE	0.04
64	50.7	$\alpha$ -TERPINEOL	2.92
65	50.8	SESQUITERPENE	0.04
66	50.9	4,5-di-epi-ARISTOLOCHENE	0.08
67	51.0	LEDENE	0.95
68	51.4	SESQUITERPENE	0.02
69	51.9	VALENCENE	0.02
70	52.2	SESQUITERPENE	0.06
71	52.5	GERMACRENE D	0.10
72	52.6	$\beta$ -SELINENE	0.15
73	52.7	$\alpha$ -MUUROLENE	0.10
74	53.0	PIPERITONE	0.03
75	53.3	BICYCLOGERMACRENE	0.19
76	53.4	$\alpha$ -SELINENE	0.10
77	54.4	SESQUITERPENE	0.09
78	54.5	$\delta$ -CADINENE	1.31
79	54.7	$\gamma$ -CADINENE	0.03
80	55.1	SESQUITERPENE	0.03
81	55.6	SESQUITERPENE	0.02
82	55.7	SESQUITERPENE	0.01
83	56.1	CADINA-1,4-DIENE	0.17
84	56.4	NEROL	0.02
85	56.6	SESQUITERPENE	0.01
86	56.9	SESQUITERPENE	0.02
87	57.1	SESQUITERPENE	0.03
88	58.5	SELINENE ISOMER	0.03
89	59.0	CALAMENENE	0.13
90	59.1	GERANIOL	0.03

**Disclaimer & Caution**

Please refer to the Material Safety Data Sheet (MSDS) and all other relevant technical information specific to the product, prior to use. The user of this product is solely responsible for determining the suitability of the product for their particular use and to be in compliance with all laws and regulations applying to the use of this product. TruGardens. shall not be held responsible for any damages or for any adverse physical effects (including injury or bodily harm) caused by insufficient knowledge, wrongful application or the improper handling or use of this product. As the ordinary or otherwise use(s) of this product is outside the control of TruGardens., no representation or warranty, expressed or implied is made as to the effect(s) of such use(s) (including damage or injury), or the results obtained. The information on the TruGardens. website is obtained from current and reliable sources but makes no representation as to its comprehensiveness or accuracy. The liability of TruGardens. is limited to the value of the goods and does not include any consequential loss. TruGardens. shall not be liable for any errors or delays in the content, or for any actions taken in reliance thereon.

Peak	RT (min)	Compound name	%
91	59,3	p-CYMENE-8-OL	0,07
92	61,1	ALIPHATIC EPOXY ACETATE	0,01
93	63,7	$\alpha$ -CALACORENE	0,02
94	64,0	SESQUITERPENOL	0,02
95	64,7	FURANIC COMPONENT	0,04
96	64,9	PALUSTROL	0,02
97	67,8	SESQUITERPENOL	0,02
98	68,3	METHYLEUGENOL	0,05
99	68,6	GLEENOL ISOMER	0,02
100	68,9	Epi-GLOBULOL	0,07
101	69,8	GERMACADIENOL ISOMER	0,04
102	70,0	LEDOL	0,04
103	71,2	GLEENOL	0,12
104	71,4	EPI-CUBENOL	0,06
105	71,8	CUBENOL	0,16
106	72,3	GLOBULOL	0,40
107	72,7	VIRIDIFLOROL	0,19
108	73,8	1D-Epi- $\gamma$ -EUDESMOL	0,07
109	74,2	ROSIFOLIOL	0,13
110	74,6	SPATHULENOL	0,06
111	75,5	trans-1,4-DIHYDROXY-p-MENTH-2-ENE	0,08
112	75,8	SESQUITERPENOL	0,04
113	76,4	ACETOXYKETONE COMPONENT	0,18
114	76,9	T-CADINOL	0,01
115	77,6	SESQUITERPENOL	0,01
116	77,7	$\alpha$ -MUUROLOL	0,02
117	78,2	$\delta$ -CADINOL	0,03
118	78,3	SESQUITERPENOL	0,02
119	78,7	ISOSPATHULENOL	0,02
120	79,5	SESQUITERPENOL	0,01
121	79,6	$\beta$ -NOOTKATOL	0,08
122	81,6	EUDEMA-7-EN-4-OL	0,02
123	83,7	OXYGENED COMPONENT	0,02
124	90,6	PHELLANDRENE DIMERE	0,02
125	95,4	SESQUITERPENOL Mw=220	0,02
126	97,0	PHYTOL	0,01
127	103,2	AROMATIC COMPONENT	0,02
		<b>TOTAL</b>	<b>99,99</b>

#### Disclaimer & Caution

Please refer to the Material Safety Data Sheet (MSDS) and all other relevant technical information specific to the product, prior to use. The user of this product is solely responsible for determining the suitability of the product for their particular use and to be in compliance with all laws and regulations applying to the use of this product. TruGardens. shall not be held responsible for any damages or for any adverse physical effects (including injury or bodily harm) caused by insufficient knowledge, wrongful application or the improper handling or use of this product. As the ordinary or otherwise use(s) of this product is outside the control of TruGardens., no representation or warranty, expressed or implied is made as to the effect(s) of such use(s) (including damage or injury), or the results obtained. The information on the TruGardens. website is obtained from current and reliable sources but makes no representation as to its comprehensiveness or accuracy. The liability of TruGardens. is limited to the value of the goods and does not include any consequential loss. TruGardens. shall not be liable for any errors or delays in the content, or for any actions taken in reliance thereon.