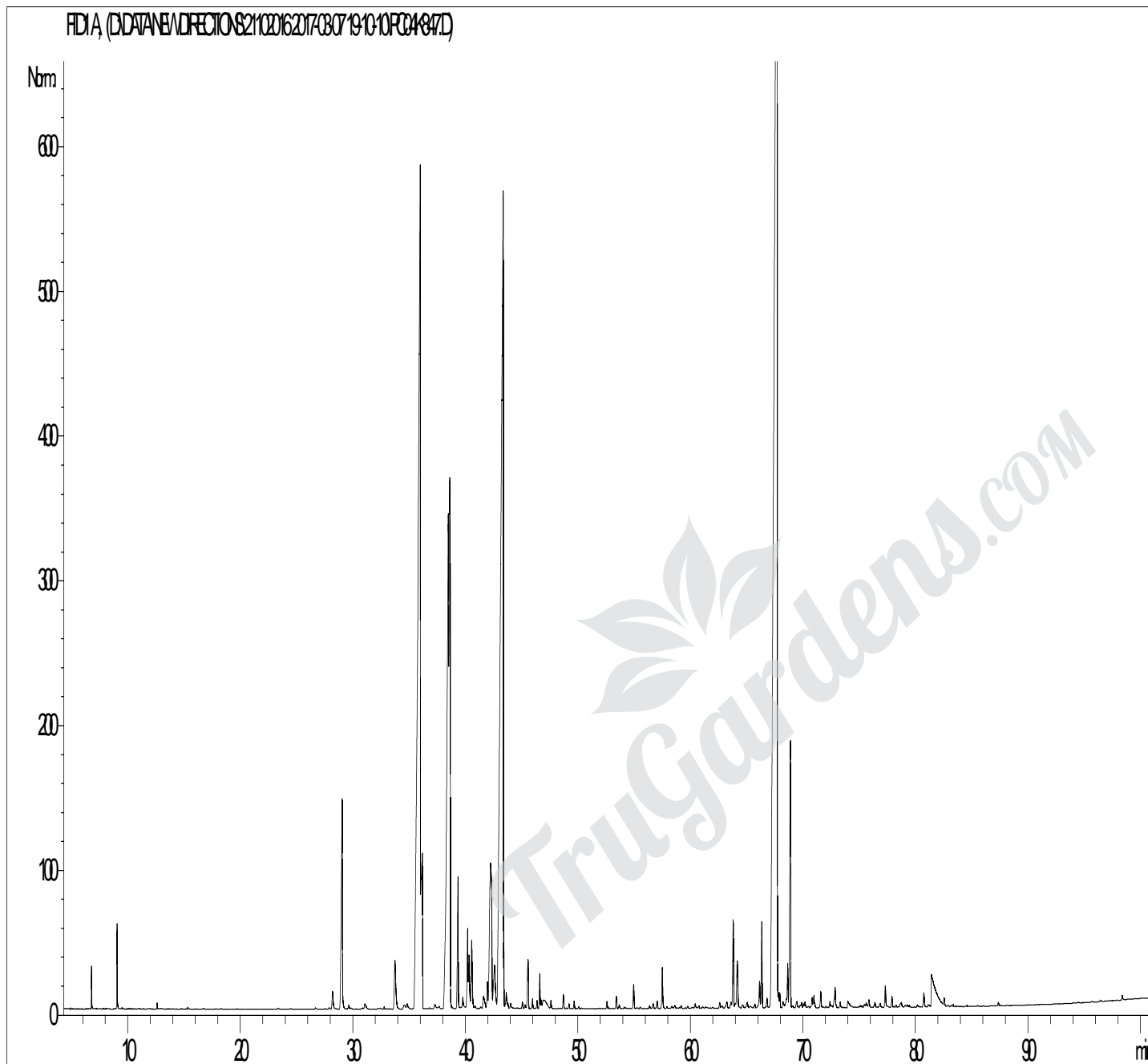


GCMS ANALYSIS

PRODUCT NAME: PATCHOULI DARK ESSENTIAL OIL - 11109

DATE: April 13, 2017



Due to volume turnover, this report is not lot specific. It is representative of the quality of this oil produced by the manufacturer of this product. Specific lots may vary slightly as is the case in natural products.

PRODUCT NAME: PATCHOULI DARK ESSENTIAL OIL - 11109

Peak	RT (min)	Compound	%
1	6,7	α -PINENE	0,12
2	6,8	α -THUYENE	0,01
3	7,8	CAMPHENE	0,01
4	9,0	β -PINENE	0,32
5	9,5	SABINENE	0,01
6	10,1	2-HEPTANONE	0,01
7	12,6	LIMONENE	0,03
8	15,3	3-OCTANONE	0,01
9	23,3	3-OCTANOL	0,01
10	26,6	1-OCTEN-3-OL	0,01
11	27,8	BICYCLOELEMENE	0,01
12	28,1	δ -ELEMENE	0,16
13	29,0	β-PATCHOULENE	2,01
14	29,6	α -COAPENE	0,03
15	31,0	PENTADECANE	0,04
16	31,1	β -BOURBONENE	0,03
17	32,8	LINALOOL	0,01
18	33,7	AROMATIC COMPOUND	0,60
19	34,5	ARISTOLENE	0,06
20	34,8	β -ELEMENE	0,07
21	35,9	α-GUAIENE	15,18
22	36,1	β-CARYOPHYLLENE	2,78
23	37,3	COPACAMPHENE	0,06
24	37,6	SESQUITERPENE	0,04
25	38,4	α-PATCHOULENE	7,55
26	38,6	SEYCHELLENE	4,96
27	38,8	SESQUITERPENE	0,01
28	39,3	γ -PATCHOULENE	0,96
29	39,8	γ -SELINENE	0,14
30	40,1	α -HUMULENE	0,60
31	40,3	GUAIENE ISOMER	0,48

Disclaimer & Caution

Please refer to the Material Safety Data Sheet (MSDS) and all other relevant technical information specific to the product, prior to use. The user of this product is solely responsible for determining the suitability of the product for their particular use and to be in compliance with all laws and regulations applying to the use of this product. TruGardens. shall not be held responsible for any damages or for any adverse physical effects (including injury or bodily harm) caused by insufficient knowledge, wrongful application or the improper handling or use of this product. As the ordinary or otherwise use(s) of this product is outside the control of TruGardens., no representation or warranty, expressed or implied is made as to the effect(s) of such use(s) (including damage or injury), or the results obtained. The information on the TruGardens. website is obtained from current and reliable sources but makes no representation as to its comprehensiveness or accuracy. The liability of TruGardens. is limited to the value of the goods and does not include any consequential loss. TruGardens. shall not be liable for any errors or delays in the content, or for any actions taken in reliance thereon.

GCMS ANALYSIS (cont'd.)

PRODUCT NAME: PATCHOULI DARK ESSENTIAL OIL - 11109

Peak	RT (min)	Compound	%
32	40,5	ALLO-AROMADENDRENE	0,62
33	40,8	4,5-di-épi-ARISTOLOCHENE	0,04
34	41,3	SESQUITERPENE	0,02
35	41,6	CALARENE	0,19
36	41,9	SESQUITERPENE Mw=202	0,20
37	42,2	ACIPHYLLENE (GUAI-4,11-DIENE)	2,62
38	42,5	GUAIADIENE ISOMER	0,16
39	42,6	CUBEBENE ISOMER	0,51
40	43,3	α -BULNESENE	17,26
41	43,4	SESQUITERPENE	0,24
42	43,6	α -SELINENE	0,16
43	43,7	β -SELINENE	0,04
44	44,0	BICYCLOGERMACRENE	0,04
45	45,0	α -FARNESENE	0,05
46	45,3	δ -CADINENE	0,03
47	45,5	7-epi- α -SELINENE	0,44
48	45,9	SESQUITERPENE Mw=202	0,07
49	46,3	SESQUITERPENE Mw=202	0,05
50	46,6	AROMATIC COMPOUND	0,22
51	46,7	SESQUITERPENE Mw=202	0,07
52	46,9	SESQUITERPENE Mw=202	0,07
53	47,0	SESQUITERPENE Mw=202	0,22
54	47,6	SESQUITERPENE Mw=202	0,07
55	48,7	AROMATIC COMPOUND	0,10
56	49,2	GERMACRENE B	0,04
57	49,6	SESQUITERPENE Mw=202	0,05
58	50,0	SESQUITERPENE	0,02
59	52,5	ALIPHATIC ESTER	0,05
60	53,4	AROMATIC COMPOUND	0,09
61	53,6	AROMATIC COMPOUND	0,03
62	54,9	AROMATIC COMPOUND	0,18

Disclaimer & Caution

Please refer to the Material Safety Data Sheet (MSDS) and all other relevant technical information specific to the product, prior to use. The user of this product is solely responsible for determining the suitability of the product for their particular use and to be in compliance with all laws and regulations applying to the use of this product. TruGardens. shall not be held responsible for any damages or for any adverse physical effects (including injury or bodily harm) caused by insufficient knowledge, wrongful application or the improper handling or use of this product. As the ordinary or otherwise use(s) of this product is outside the control of TruGardens., no representation or warranty, expressed or implied is made as to the effect(s) of such use(s) (including damage or injury), or the results obtained. The information on the TruGardens. website is obtained from current and reliable sources but makes no representation as to its comprehensiveness or accuracy. The liability of TruGardens. is limited to the value of the goods and does not include any consequential loss. TruGardens. shall not be liable for any errors or delays in the content, or for any actions taken in reliance thereon.

GCMS ANALYSIS (cont'd.)

PRODUCT NAME: PATCHOULI DARK ESSENTIAL OIL - 11109

Peak	RT (min)	Compound	%
63	55,5	CUBEBOL	0,01
64	56,3	SESQUITERPENIC EPOXIDE	0,02
65	56,6	TERPENIC ALCOHOL	0,05
66	57,0	ISOCARYOPHYLLENE EPOXIDE	0,06
67	57,5	CARYOPHYLLENE EPOXIDE	0,31
68	60,4	EPOXY-6,7-HUMULENE	0,05
69	60,7	NEROLIDOL	0,02
70	62,6	ELEMOL	0,04
71	62,8	SESQUITERPENIC EPOXIDE	0,03
72	63,2	SESQUITERPENIC EPOXIDE Mw=220	0,08
73	63,6	AROMATIC COMPOUND	0,06
74	63,8	NORPATCHOULENOL Mw=206	0,65
75	64,0	SESQUITERPENOL	0,03
76	64,1	SESQUITERPENOL	0,45
77	64,6	SESQUITERPENOL	0,05
78	65,0	ALIPHATIC ESTER	0,07
79	65,7	SESQUITERPENIC EPOXIDE	0,04
80	66,1	LEDOL	0,24
81	66,4	BULNESOL ISOMER	0,58
82	66,6	SESQUITERPENIC EPOXIDE	0,01
83	66,8	SESQUITERPENIC EPOXIDE	0,08
84	67,7	PATCHOULOL	31,04
85	67,8	SESQUITERPENIC EPOXIDE	0,10
86	67,9	SESQUITERPENONE	0,10
87	68,2	SESQUITERPENOL Mw=222	0,07
88	68,5	SESQUITERPENONE	0,08
89	68,6	SESQUITERPENOL Mw=222	0,30
90	68,9	POGOSTOL	2,12
91	69,1	SESQUITERPENIC EPOXIDE	0,03
92	69,5	SESQUITERPENOL	0,07
93	69,7	SESQUITERPENIC EPOXIDE	0,02

Disclaimer & Caution

Please refer to the Material Safety Data Sheet (MSDS) and all other relevant technical information specific to the product, prior to use. The user of this product is solely responsible for determining the suitability of the product for their particular use and to be in compliance with all laws and regulations applying to the use of this product. TruGardens. shall not be held responsible for any damages or for any adverse physical effects (including injury or bodily harm) caused by insufficient knowledge, wrongful application or the improper handling or use of this product. As the ordinary or otherwise use(s) of this product is outside the control of TruGardens., no representation or warranty, expressed or implied is made as to the effect(s) of such use(s) (including damage or injury), or the results obtained. The information on the TruGardens. website is obtained from current and reliable sources but makes no representation as to its comprehensiveness or accuracy. The liability of TruGardens. is limited to the value of the goods and does not include any consequential loss. TruGardens. shall not be liable for any errors or delays in the content, or for any actions taken in reliance thereon.

GCMS ANALYSIS (cont'd.)

PRODUCT NAME: PATCHOULI DARK ESSENTIAL OIL - 11109

Peak	RT (min)	Compound	%
63	55,5	CUBEBOL	0,01
94	69,8	SESQUITERPENIC EPOXIDE	0,04
95	70,0	SESQUITERPENIC EPOXIDE	0,03
96	70,1	SPATHULENOL	0,05
97	70,8	EUDESMOL ISOMER	0,08
98	70,9	β-NOOTKATOL	0,10
99	71,0	SESQUITERPENIC EPOXIDE	0,02
100	71,5	PATCHOULENONE Mw=218	0,13
101	72,4	SESQUITERPENOL Mw=220	0,05
102	72,7	SESQUITERPENIC EPOXIDE	0,03
103	72,8	SESQUITERPENIC EPOXIDE	0,15
104	72,9	SESQUITERPENIC EPOXIDE	0,02
105	73,3	SESQUITERPENOL Mw=220	0,05
106	75,6	SESQUITERPENIC EPOXIDE	0,06
107	75,8	SESQUITERPENIC EPOXIDE	0,08
108	76,3	SESQUITERPENIC EPOXIDE	0,05
109	76,8	SESQUITERPENIC EPOXIDE	0,05
110	77,3	SESQUITERPENOL Mw=220	0,20
111	77,9	SESQUITERPENONE	0,08
112	78,3	SESQUITERPENOL Mw=220	0,02
113	78,6	AROMATIC COMPONENT	0,02
114	78,7	SESQUITERPENOL Mw=220	0,05
115	80,1	SESQUITERPENONE	0,03
116	80,7	AROMATIC COMPOUND	0,12
117	81,4	POGOSTONE	1,21
118	82,5	SESQUITERPENONE	0,09
119	87,3	PHYTOL	0,03
		TOTAL	99,97

Disclaimer & Caution

Please refer to the Material Safety Data Sheet (MSDS) and all other relevant technical information specific to the product, prior to use. The user of this product is solely responsible for determining the suitability of the product for their particular use and to be in compliance with all laws and regulations applying to the use of this product. TruGardens. shall not be held responsible for any damages or for any adverse physical effects (including injury or bodily harm) caused by insufficient knowledge, wrongful application or the improper handling or use of this product. As the ordinary or otherwise use(s) of this product is outside the control of TruGardens., no representation or warranty, expressed or implied is made as to the effect(s) of such use(s) (including damage or injury), or the results obtained. The information on the TruGardens. website is obtained from current and reliable sources but makes no representation as to its comprehensiveness or accuracy. The liability of TruGardens. is limited to the value of the goods and does not include any consequential loss. TruGardens. shall not be liable for any errors or delays in the content, or for any actions taken in reliance thereon.