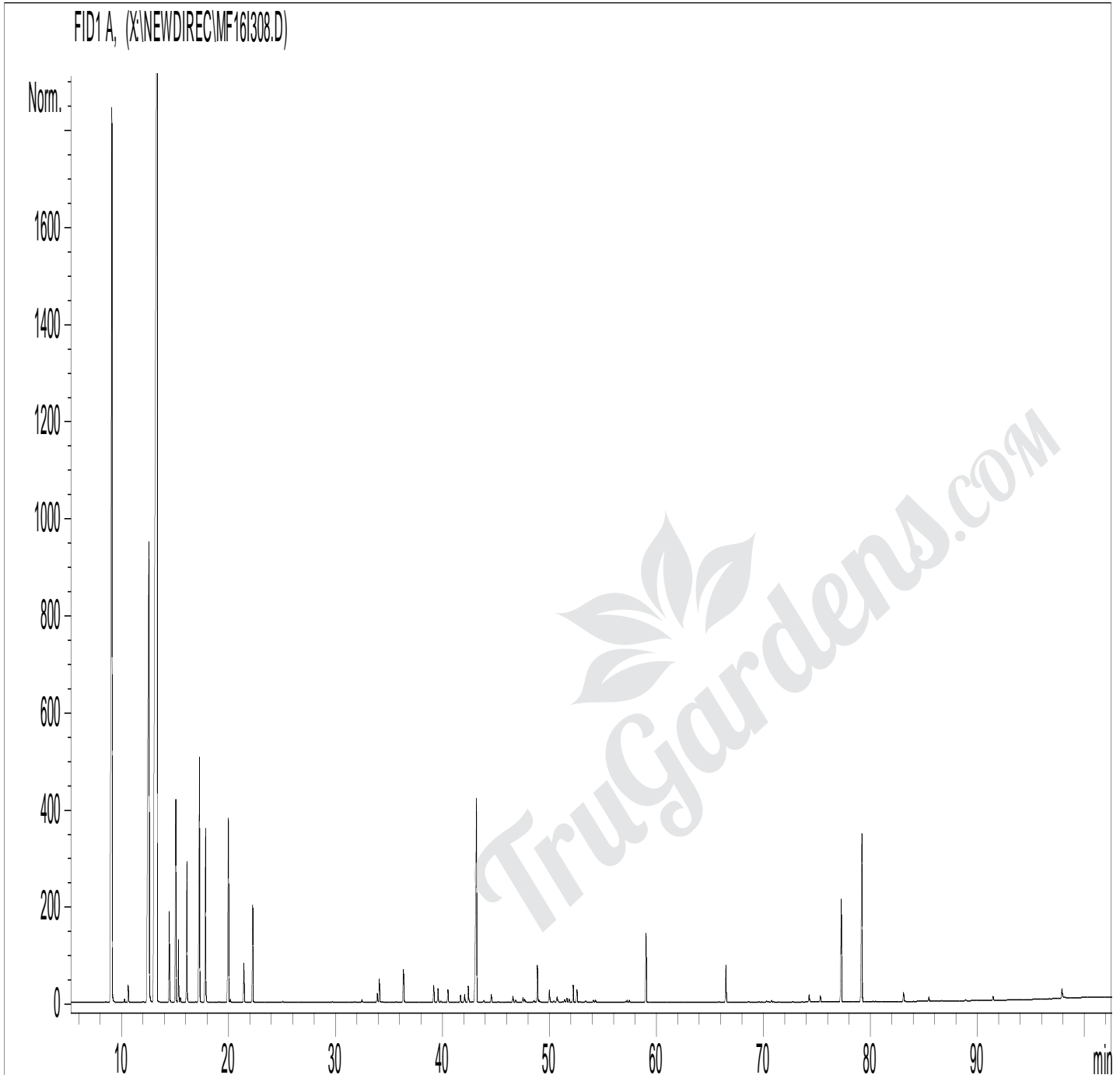


GCMS ANALYSIS

PRODUCT NAME: NUTMEG ORGANIC ESSENTIAL OIL - 50017

DATE: October 27, 2016



Due to volume turnover, this report is not lot specific. It is representative of the quality of this oil produced by the manufacturer of this product. Specific lots may vary slightly as is the case in natural products.

GCMS ANALYSIS (cont'd.)

PRODUCT NAME: LOVAGE LEAF ESSENTIAL OIL - 11086

Peak	RT (min)	Compound name	%
1	4,8	ACETONE	0,01
2	6,2	2-METHYL BUTANAL	0,01
3	6,3	ETHANOL	0,01
4	8,5	TRICYCLENE	0,01
5	9,0	α-PINENE	16,13
6	9,1	α -THUYENE	0,95
7	10,2	α -FENCHENE	0,04
8	10,6	CAMPHENE	0,21
9	11,9	TERPENE ISOMER	0,02
10	12,5	β-PINENE	12,37
11	13,3	SABINENE	38,73
12	13,4	PINADIENE	0,03
13	14,4	Δ3-CARENE	1,03
14	15,0	β-MYRCENE	2,52
15	15,3	α -PHELLANDRENE	0,66
16	15,4	ψ -LIMONENE	0,05
17	16,1	α-TERPINENE	1,70
18	16,9	2,3-DEHYDRO-1,8-CINEOLE	0,01
19	17,2	LIMONENE	3,75
20	17,8	β-PHELLANDRENE	2,31
21	19,0	Cis- β -OCIMENE	0,01
22	19,6	ARBUSCULONE ISOMER	0,01
23	19,9	γ-TERPINENE	2,76
24	20,1	Trans- β -OCIMENE	0,04
25	21,2	m-CYMENE	0,01
26	21,4	p-CYMENE	0,48
27	21,8	ISOTERPINOLENE	0,01
28	22,2	TERPINOLENE	1,27
29	25,0	ADAMANTANOL Mw=152	0,01
30	29,6	MENTHATRIENE ISOMER	0,01
31	31,8	COMPONENT Mw=134	0,01
32	32,4	α ,p-DIMETHYLSTYRENE	0,04

Disclaimer & Caution

Please refer to the Material Safety Data Sheet (MSDS) and all other relevant technical information specific to the product, prior to use. The user of this product is solely responsible for determining the suitability of the product for their particular use and to be in compliance with all laws and regulations applying to the use of this product. TruGardens. shall not be held responsible for any damages or for any adverse physical effects (including injury or bodily harm) caused by insufficient knowledge, wrongful application or the improper handling or use of this product. As the ordinary or otherwise use(s) of this product is outside the control of TruGardens., no representation or warranty, expressed or implied is made as to the effect(s) of such use(s) (including damage or injury), or the results obtained. The information on the TruGardens. website is obtained from current and reliable sources but makes no representation as to its comprehensiveness or accuracy. The liability of TruGardens. is limited to the value of the goods and does not include any consequential loss. TruGardens. shall not be liable for any errors or delays in the content, or for any actions taken in reliance thereon.

GCMS ANALYSIS (cont'd.)

PRODUCT NAME: LOVAGE LEAF ESSENTIAL OIL - 11086

Peak	RT (min)	Compound name	%
33	33,9	Trans-THUYANOL	0,14
34	34,1	α -CUBEBENE	0,30
35	34,2	MENTHATRIENE ISOMER	0,01
36	34,4	TERPENE ISOMER	0,01
37	35,6	SESQUITERPENE	0,01
38	35,8	SESQUITERPENE	0,01
39	36,3	α -COPAENE	0,52
40	37,7	SESQUITERPENE	0,01
41	38,3	TERPENIC ACETATE	0,01
42	38,7	α -GURJUNENE	0,01
43	39,2	LINALOOL	0,22
44	39,6	Cis-THUYANOL	0,19
45	39,8	LINALYL ACETATE + SESQUITERPENE	0,02
46	40,5	Trans-p-MENTH-2-EN-1-OL	0,17
47	40,9	PINOCARVONE	0,01
48	41,1	SESQUITERPENE	0,01
49	41,6	BORNYL ACETATE	0,10
50	42,0	α -trans-BERGAMOTENE	0,11
51	42,4	β -ELEMENE	0,24
52	42,6	β -CUBEBENE	0,01
53	42,8	SESQUITERPENE	0,01
54	44,1	TERPINENE-4-OL	3,47
55	44,2	β -CARYOPHYLLENE	0,52
56	43,8	TERPINENE-4-YLE ACETATE	0,03
57	44,5	Cis-p-MENTH-2-EN-1-OL	0,10
58	45,2	SESQUITERPENE	0,01
59	45,6	SESQUITERPENE	0,01
60	46,1	SESQUITERPENE	0,01
61	46,5	CITRONELLYL ACETATE	0,08
62	46,8	E- β -FARNESENE + ZONARENE	0,03
63	47,5	α -HUMULENE	0,07
64	47,7	Cis-PIPERITOL	0,04

Disclaimer & Caution

Please refer to the Material Safety Data Sheet (MSDS) and all other relevant technical information specific to the product, prior to use. The user of this product is solely responsible for determining the suitability of the product for their particular use and to be in compliance with all laws and regulations applying to the use of this product. TruGardens. shall not be held responsible for any damages or for any adverse physical effects (including injury or bodily harm) caused by insufficient knowledge, wrongful application or the improper handling or use of this product. As the ordinary or otherwise use(s) of this product is outside the control of TruGardens., no representation or warranty, expressed or implied is made as to the effect(s) of such use(s) (including damage or injury), or the results obtained. The information on the TruGardens. website is obtained from current and reliable sources but makes no representation as to its comprehensiveness or accuracy. The liability of TruGardens. is limited to the value of the goods and does not include any consequential loss. TruGardens. shall not be liable for any errors or delays in the content, or for any actions taken in reliance thereon.

GCMS ANALYSIS (cont'd.)

PRODUCT NAME: LOVAGE LEAF ESSENTIAL OIL - 11086

Peak	RT (min)	Compound name	%
65	47,8	SESQUITERPENE	0,01
66	48,5	γ -MUUROLENE	0,02
67	48,6	SESQUITERPENE	0,01
68	48,8	α -TERPINEOL	0,50
69	49,0	TERPENYL ACETATE	0,02
70	49,1	SESQUITERPENE	0,01
71	49,9	GERMACRENE D	0,19
72	50,1	SESQUITERPENE	0,01
73	50,4	NERYL ACETATE + PIPERITONE	0,02
74	50,7	β -BISABOLENE	0,10
75	51,2	SESQUITERPENE	0,01
76	51,4	SESQUITERPENE	0,04
77	51,6	Trans- PIPERITOL	0,06
78	51,8	SESQUITERPENE	0,04
79	52,2	GERANYL ACETATE + α -FARNESENE	0,21
80	52,3	CITRONELLOL	0,02
81	52,5	δ -CADINENE	0,19
82	52,8	γ -CADINENE	0,01
83	53,3	α -BISABOLENE	0,01
84	53,4	ALIPHATIC ALDEHYDE	0,01
85	54,1	CADINA-1,4-DIENE	0,02
86	54,2	MYRTENOL	0,03
87	57,0	CALAMENENE	0,01
88	57,2	GERANIOL	0,03
89	57,4	p-CYMENE-8-OL	0,03
90	59,0	SAFROLE	0,97
91	60,3	α -CALACORENE	0,01
92	61,7	SESQUITERPENIC EPOXIDE	0,01
93	63,1	CUBEBOL	0,01
94	64,6	SESQUITERPENIC EPOXIDE	0,01
95	65,8	CARYOPHYLLENE EPOXIDE	0,01
96	66,5	METHYLEUGENOL	0,50

Disclaimer & Caution

Please refer to the Material Safety Data Sheet (MSDS) and all other relevant technical information specific to the product, prior to use. The user of this product is solely responsible for determining the suitability of the product for their particular use and to be in compliance with all laws and regulations applying to the use of this product. TruGardens. shall not be held responsible for any damages or for any adverse physical effects (including injury or bodily harm) caused by insufficient knowledge, wrongful application or the improper handling or use of this product. As the ordinary or otherwise use(s) of this product is outside the control of TruGardens., no representation or warranty, expressed or implied is made as to the effect(s) of such use(s) (including damage or injury), or the results obtained. The information on the TruGardens. website is obtained from current and reliable sources but makes no representation as to its comprehensiveness or accuracy. The liability of TruGardens. is limited to the value of the goods and does not include any consequential loss. TruGardens. shall not be liable for any errors or delays in the content, or for any actions taken in reliance thereon.

GCMS ANALYSIS (cont'd.)

PRODUCT NAME: LOVAGE LEAF ESSENTIAL OIL - 11086

Peak	RT (min)	Compound name	%
97	68,0	ALIPHATIC ESTER	0,01
98	69,5	AROMATIC COMPONENT Mw=238	0,01
99	69,8	SESQUITERPENIC EPOXIDE	0,01
100	70,3	ELEMOL	0,02
101	70,5	CUMINOL	0,01
102	70,7	GUAIOL	0,02
103	70,9	SESQUITERPENOL	0,01
104	72,7	SPATHULENOL	0,01
105	73,6	Trans-1,4-DIHYDRO-p-MENTH-2-ENE	0,01
106	74,2	EUGENOL	0,11
107	74,9	ISOTHYMOL	0,01
108	75,3	METHYLISOEUGENOL	0,08
109	76,3	THYMOL	0,01
110	76,9	SESQUITERPENOL	0,01
111	77,3	ELEMICINE	1,53
112	77,6	α -EUDESMOL	0,01
113	78,0	β -EUDESMOL	0,01
114	78,6	SESQUITERPENOL	0,01
115	79,2	MYRISTICINE	2,82
116	80,2	ALIPHATIC ESTER	0,01
117	80,4	ALIPHATIC ESTER	0,01
118	83,1	ISOEUGENOL	0,13
119	85,4	Trans-ISOELEMICINE	0,06
120	86,6	AROMATIC COMPONENT Mw=236	0,01
121	88,9	LAURIC ACID	0,01
122	91,4	METHOXY EUGENOL	0,05
123	97,8	MYRISTIC ACID	0,16
124	107,3	PALMITIC ACID	0,01
		TOTAL	99,99

Disclaimer & Caution

Please refer to the Material Safety Data Sheet (MSDS) and all other relevant technical information specific to the product, prior to use. The user of this product is solely responsible for determining the suitability of the product for their particular use and to be in compliance with all laws and regulations applying to the use of this product. TruGardens. shall not be held responsible for any damages or for any adverse physical effects (including injury or bodily harm) caused by insufficient knowledge, wrongful application or the improper handling or use of this product. As the ordinary or otherwise use(s) of this product is outside the control of TruGardens., no representation or warranty, expressed or implied is made as to the effect(s) of such use(s) (including damage or injury), or the results obtained. The information on the TruGardens. website is obtained from current and reliable sources but makes no representation as to its comprehensiveness or accuracy. The liability of TruGardens. is limited to the value of the goods and does not include any consequential loss. TruGardens. shall not be liable for any errors or delays in the content, or for any actions taken in reliance thereon.