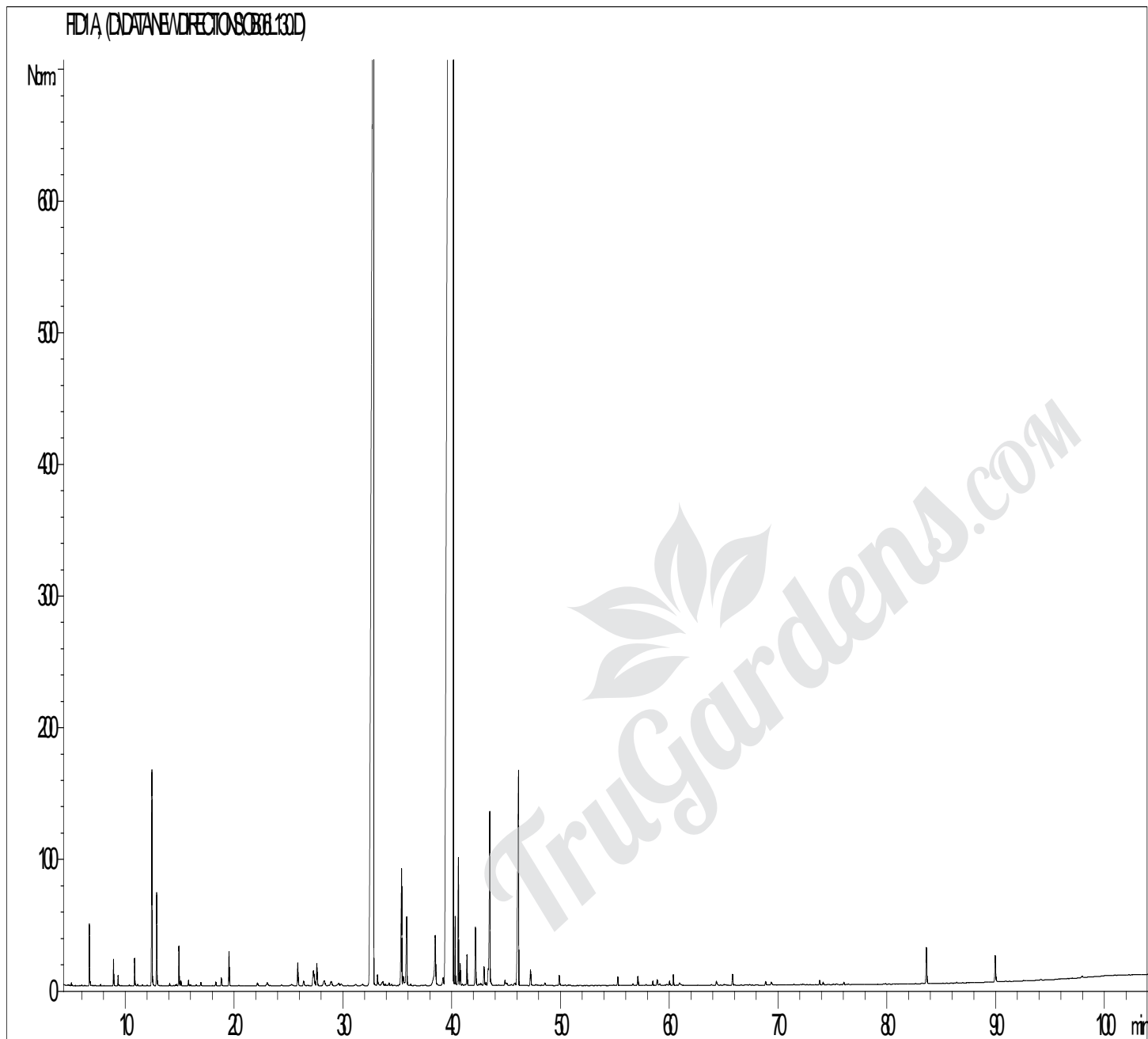


GCMS ANALYSIS

PRODUCT NAME: BASIL SWEET ESSENTIAL OIL (INDIA) - 11006

DATE: April 21, 2017



*Due to volume turnover, this report is not lot specific. It is representative of the quality of this oil produced by the manufacturer of this product. Specific lots may vary slightly as is the case in natural products.*

GCMS ANALYSIS (cont'd.)

PRODUCT NAME: BASIL SWEET ESSENTIAL OIL (INDIA) - 11006

Peak	RT (min)	Compound name	%
1	4,3	ACETONE	0,01
2	5,0	ISOVELARALDEHYDE	0,01
3	6,7	$\alpha$ -PINENE	0,15
4	6,8	$\alpha$ -THUYENE	0,01
5	7,7	CAMPHENE	0,01
6	8,9	$\beta$ -PINENE	0,08
7	9,3	SABINENE	0,03
8	10,9	$\beta$ -MYRCENE	0,09
9	11,1	$\psi$ -LIMONENE	0,01
10	11,6	$\alpha$ -TERPINENE	0,01
11	12,0	1,8-CINEOLE, 2,3-DEHYDRO-	0,01
12	12,5	LIMONENE	0,85
13	12,9	1,8-CINEOLE	0,36
14	14,1	Cis- $\beta$ -OCIMENE	0,01
15	14,7	$\gamma$ -TERPINENE	0,01
16	14,9	Trans- $\beta$ -OCIMENE	0,16
17	15,1	3-OCTANONE	0,02
18	15,8	p-CYMENE	0,02
19	16,0	HEXYL ACETATE	0,01
20	16,5	TERPINOLENE	0,01
21	16,9	OCTANAL	0,02
22	18,3	3-HEXEN-1-OL ACETATE	0,01
23	18,8	CYCLOHEXANONE, 3-METHYL-	0,04
24	19,5	6-METHYL-5-HEPTEN-2-ONE	0,14
25	22,1	3-HEXEN-1-OL	0,02
26	23,1	3-OCTANOL + FENCHONE	0,03
27	25,3	METHYL CYCLOHEXANOL ISOMER	0,01
28	25,9	LINALOOL Cis-OXIDE	0,12
29	26,4	1-OCTEN-3-OL	0,03
30	27,3	MENTHONE	0,16
31	27,6	LINALOOL Trans-OXIDE	0,12
32	28,3	OCTYL ACETATE	0,05

Disclaimer & Caution

Please refer to the Material Safety Data Sheet (MSDS) and all other relevant technical information specific to the product, prior to use. The user of this product is solely responsible for determining the suitability of the product for their particular use and to be in compliance with all laws and regulations applying to the use of this product. TruGardens. shall not be held responsible for any damages or for any adverse physical effects (including injury or bodily harm) caused by insufficient knowledge, wrongful application or the improper handling or use of this product. As the ordinary or otherwise use(s) of this product is outside the control of TruGardens., no representation or warranty, expressed or implied is made as to the effect(s) of such use(s) (including damage or injury), or the results obtained. The information on the TruGardens. website is obtained from current and reliable sources but makes no representation as to its comprehensiveness or accuracy. The liability of TruGardens. is limited to the value of the goods and does not include any consequential loss. TruGardens. shall not be liable for any errors or delays in the content, or for any actions taken in reliance thereon.

GCMS ANALYSIS (cont'd.)

PRODUCT NAME: BASIL SWEET ESSENTIAL OIL (INDIA) - 11006

Peak	RT (min)	Compound name	%
33	28,9	ISOMENTHONE	0,04
34	29,6	$\alpha$ -COPAENE	0,03
35	29,8	ISONERAL	0,02
36	31,2	$\beta$ -BOURBONENE	0,01
37	31,8	$\alpha$ -GURJUNENE	0,01
38	32,7	SESQUITERPENE	0,01
39	32,8	<b>LINALOOL</b>	<b>18,43</b>
40	33,2	1-OCTANOL	0,06
41	33,6	SESQUITERPENE	0,02
42	33,7	MENTHYL ACETATE	0,03
43	34,2	$\alpha$ -cis-BERGAMOTENE	0,01
44	34,5	$\epsilon$ -CADINENE	0,01
45	35,4	$\alpha$ -trans-BERGAMOTENE	0,67
46	35,5	$\beta$ -ELEMENE	0,05
47	35,7	SESQUITERPENE	0,02
48	35,9	$\beta$ -CARYOPHYLLENE	0,41
49	36,2	HOTRIENOL	0,01
50	38,5	MENTHOL	0,45
51	39,2	E- $\beta$ -FARNESENE	0,06
52	40,1	ESTRAGOLE	71,88
53	40,3	$\alpha$ -HUMULENE	0,20
54	40,6	NERAL	0,59
55	40,8	Z- $\beta$ -FARNESENE	0,09
56	41,0	SESQUITERPENE	0,01
57	41,4	$\alpha$ -TERPINEOL	0,14
58	42,2	GERMACRENE D	0,32
59	42,5	$\beta$ -SELINENE	0,01
60	42,7	PIPERITONE	0,02
61	43,0	HEXENYL ESTER	0,10
62	43,1	SESQUITERPENE	0,02
63	43,4	$\beta$ -BISABOLENE	0,07
64	43,5	GERANIAL	0,93

**Disclaimer & Caution**

Please refer to the Material Safety Data Sheet (MSDS) and all other relevant technical information specific to the product, prior to use. The user of this product is solely responsible for determining the suitability of the product for their particular use and to be in compliance with all laws and regulations applying to the use of this product. TruGardens. shall not be held responsible for any damages or for any adverse physical effects (including injury or bodily harm) caused by insufficient knowledge, wrongful application or the improper handling or use of this product. As the ordinary or otherwise use(s) of this product is outside the control of TruGardens., no representation or warranty, expressed or implied is made as to the effect(s) of such use(s) (including damage or injury), or the results obtained. The information on the TruGardens. website is obtained from current and reliable sources but makes no representation as to its comprehensiveness or accuracy. The liability of TruGardens. is limited to the value of the goods and does not include any consequential loss. TruGardens. shall not be liable for any errors or delays in the content, or for any actions taken in reliance thereon.

GCMS ANALYSIS (cont'd.)

PRODUCT NAME: BASIL SWEET ESSENTIAL OIL (INDIA) - 11006

Peak	RT (min)	Compound name	%
65	43,6	BICYCLOGERMACRENE	0,01
66	44,9	$\delta$ -CADINENE + $\gamma$ -CADINENE	0,04
67	45,1	LINALOOL PYRANIC OXIDE	0,01
68	45,5	$\beta$ -SESQUIPELLANDRENE	0,01
69	45,8	$\alpha$ -CURCUMENE	0,02
70	46,1	$\alpha$ -BISABOLENE	<b>1,55</b>
71	47,2	NEROL	0,09
72	48,6	Trans-ANETHOL	0,02
73	49,9	GERANIOL	0,06
74	55,3	2,6-DIMETHYL-3,7-OCTADIENE-2,6-DIOL	0,04
75	56,6	ISOCARYOPHYLLENE EPOXIDE	0,01
76	57,1	CARYOPHYLLENE EPOXIDE	0,05
77	58,5	METHYLEUGENOL	0,02
78	58,9	ANISALDEHYDE	0,03
79	59,1	ALIPHATIC ESTHER	0,01
80	59,8	ESTER ALIPHATIQUE	0,01
81	60,0	Epoxy-6,7-HUMULENE	0,03
82	60,4	NEROLIDOL	0,05
83	60,9	CAPRYLIC ACID	0,02
84	63,9	SESQUITERPENIC EPOXIDE	0,01
85	64,3	SPATHULENOL	0,03
86	65,8	EUGENOL	0,06
87	68,8	$\alpha$ -BISABOLOL	0,02
88	69,3	SESQUITERPENOL	0,02
89	69,4	$\alpha$ -CADINOL	0,01
90	73,8	CHAVICOL	0,02
91	76,0	SESQUITERPENOL	0,01
92	83,6	CINNAMALDEHYDE, 3-METHOXY-	0,21
93	90,0	4-METHOXYPHENYL, 2-PROPANONE-	0,16
94	98,0	AROMATIC COMPOUND	0,01
		<b>TOTAL</b>	<b>99,99</b>

**Disclaimer & Caution**

Please refer to the Material Safety Data Sheet (MSDS) and all other relevant technical information specific to the product, prior to use. The user of this product is solely responsible for determining the suitability of the product for their particular use and to be in compliance with all laws and regulations applying to the use of this product. TruGardens. shall not be held responsible for any damages or for any adverse physical effects (including injury or bodily harm) caused by insufficient knowledge, wrongful application or the improper handling or use of this product. As the ordinary or otherwise use(s) of this product is outside the control of TruGardens., no representation or warranty, expressed or implied is made as to the effect(s) of such use(s) (including damage or injury), or the results obtained. The information on the TruGardens. website is obtained from current and reliable sources but makes no representation as to its comprehensiveness or accuracy. The liability of TruGardens. is limited to the value of the goods and does not include any consequential loss. TruGardens. shall not be liable for any errors or delays in the content, or for any actions taken in reliance thereon.