



Nano Audacity RIC

Receiver In Canal
OTC Hearing Aids

User Manual

Warning



Warning

WARNING: If you are younger than 18, do not use this.

You should go to a doctor, preferably an ear-nose-throat doctor (an ENT), because your condition needs specialized care. Over-the-counter hearing aids are only for users who are age 18 or older.

This OTC hearing aid is for users who are 18 and older. People who are younger than 18 with hearing loss should see a doctor, preferably an ENT, because they may need medical testing and management. Hearing loss can affect speech and learning, so professional fitting and continuing care are also important.

WARNING: When to See a Doctor.

- If you have any of the problems listed below, please see a doctor, preferably an ear-nose-throat doctor (an ENT).
- Your ear has a birth defect or an unusual shape. Your ear was injured or deformed in an accident.
- You saw blood, pus, or fluid coming out of your ear in the past 6 months Your ear feels painful or uncomfortable.
- Your ear feels painful or uncomfortable.
- You have a lot of ear wax, or you think something could be in your ear.
- You get really dizzy or have a feeling of spinning or swaying (called vertigo).
- Your hearing changed suddenly in the past 6 months.
- Your hearing changes: it gets worse then gets better again.
- You have worse hearing in one ear.
- You hear ringing or buzzing in only one ear.



WARNING: This hearing aid should not cause pain when inserting it.

Remove this device from your ear if it causes pain or discomfort when you insert or place it. Ensure to review all instructions before trying again. If you feel pain or discomfort again, contact the manufacturer. If your pain or discomfort doesn't go away, contact your hearing healthcare professional. You can also report this to FDA as an adverse event according to the instructions that appear later.

These PRECAUTIONS point out situations which could cause minor or moderate injuries to the user or to the hearing aid.

- You should familiarize yourself fully with the entire contents of this user manual before using the hearing aid to ensure personal safety and correct use. Contact the manufacturer for support if you experience unexpected operations or performance.
- Do not attempt to modify the shape of the hearing aid or slim tube yourself.

These WARNINGS point out situations which could cause serious injuries to the user or to the hearing aid.



Warning

- In some acoustic environments, over amplification can cause discomfort and damage to the patient's hearing.
- A hearing aid should only be used as directed by your physician or hearing healthcare provider.
- Do not use your hearing aid in explosive or oxygen-enriched areas. Allergic reactions to hearing aids are unlikely, however if you are experiencing itching, redness, soreness, inflammation, or a burning sensation in or around your ears, inform your hearing healthcare provider and contact your physician.
- You may notice accelerated accumulation of earwax when using your hearing aid. This is normal, but see your hearing healthcare provider if you continue to have difficulty.
- In the unlikely case that any parts remain in the ear canal after the removal of the hearing aid contact a physician immediately. Report the event to your hearing healthcare provider as soon as possible.
- Remove your aids for CT and MRI scans or for other electromagnetic procedures.
- Never leave your hearing aids or batteries where small children and pets can reach them. If batteries are swallowed or inhaled, contact the local poison control center immediately.
- If you feel pain in or behind your ear, if it is inflamed, if skin irritation or accumulation of ear wax occurs, please check with your hearing healthcare provider or physician.
- Your hearing aids have been adjusted for your hearing needs; please do not share your hearing devices with other people.



Caution and notices for users

Caution: this is not hearing protection.

You should remove this device if you experience overly loud sounds, whether short or long-lasting. If you're in a loud place, you should use the right kind of hearing protection instead of wearing this device. In general, if you would use ear domes in a loud place, you should remove this device and use ear domes.

Caution: The sound output should not be uncomfortable or painful.

You should turn down the volume or remove the device if the sound output is uncomfortably loud or painful. If you consistently need to turn the volume down, you may need to further adjust your device.

Caution: You might need medical help if a piece gets stuck in your ear.

If any part of your hearing aid, like the ear dome, gets stuck in your ear, and you can't easily remove it with your fingers, get medical help as soon as you can. You should not try to use tweezers or cotton swabs because they can push the part farther into your ear, injuring your eardrum or ear canal, possibly seriously.

Note: If you remain concerned, consult with a professional.

If you try this device and continue to struggle with or remain concerned about your hearing, you should consult with a hearing healthcare professional.



Warning

Note: What you might expect when you start using a hearing aids.

A hearing aid can benefit many people with hearing loss. However, you should know it will not restore normal hearing, and you may still have some difficulty hearing over noise. Furthermore, a hearing aid will not prevent or improve a medical condition that causes hearing loss.

If you have hearing loss in both ears, you might get more out of using hearing aids in both especially in situations especially in situations where listening makes you feel tired, for example in noisy environments.

People who start using hearing aids sometimes need a few weeks to get used to them. Similarly many people find that training or counseling can help them get more out of their devices.

Note: Tell FDA about injuries, malfunctions, or other adverse events.

To report a problem involving your hearing aids, you should submit information to the FDA as soon as possible after the problem. The FDA call them "adverse events," and they might include: skin irritation in your ear, injury from the device (like occurs, or burns from an overheated battery), pieces of the device getting stuck in your ear, suddenly worsening hearing loss from using the device, etc.

Instructions for reporting are available at <https://www.fda.gov/Safety/MedWatch> or call 1-800-FDA-1088. You can also download a form to mail to the FDA.

1.	Product Parameter	04
2.	Product Introduction	05
	Accessories	06
	Component Description	07
3.	Operating Instructions	08
	Magnetic Suction ON/OFF	09
	Power ON and OFF Manually	09
	How To Charge Your Hearing Aid and Charge Case	10
	How To Wear Your Hearing Aid	12
	Multi-function Button	13
	Adjusting Volume	14
	Hearing Aid Modes	14
	How To Replace Ear Domes	15
	How To Replace Wax Guards	15
	How To Replace The Ric Tube	17

4.	Bluetooth and App Functions.....	19
	Bluetooth Function	20
	"Nano Audacity" App	21
5.	Precautions For Use	26
	Precautions For Battery Use	27
	Precautions For Using Hearing Aids	27
6.	Care and Maintenance	28
	Care and Maintenance	29
	Normal Working Conditions	30
	Transportation Conditions	30
	Storage Conditions	30
7.	Troubleshooting Guide	32
8.	Contraindications and Precautions	34
9.	FCC Warning	36

1

Product Parameter

Product Parameter

MAX Output (OSPL90)	<117 dB
HF Average Output (OSPL90)	112±4 dB
HFA Full-on Gain (FOG50)	43±4 dB
Equivalent Input Noise	≤32 dB
Frequency Range	F1<250 Hz F2>5000 Hz
Total Harmonic Distortion	≤3%

	Hearing aid	Charging box
Charging Time	≤2.5H	≤2.5H
Endurance time	Hearing aid mode: ≥ 17H Bluetooth mode: ≥ 3H	Charge a pair of hearing aids about 2 times

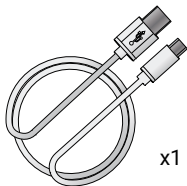
2

Product Introduction

Accessories

Component Description

Accessories



Charging Cable



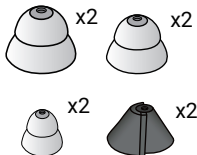
Cleaning Brush



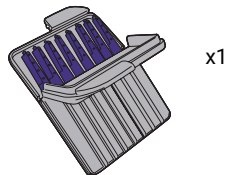
Adapter



RIC Replacement Pin

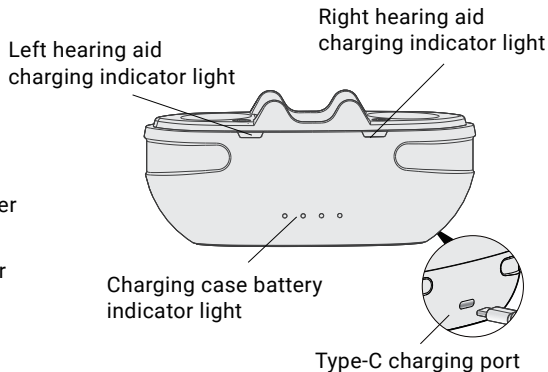
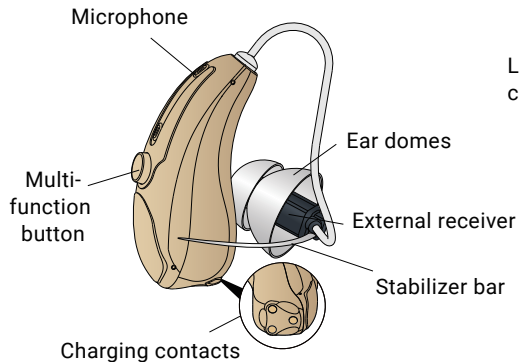


Ear Dome



Wax Guard

Component Description



3

Operating Instructions

Magnetic Suction ON/OFF

Power ON and OFF Manually

How To Charge Your Hearing Aid and Charge Case

How To Wear Your Hearing Aid

Multi-function Button

Adjusting Volume

Hearing Aid Modes

How To Replace Ear Domes

How To Replace Wax Guards

How To Replace The Ric Tube

Magnetic Suction ON/OFF

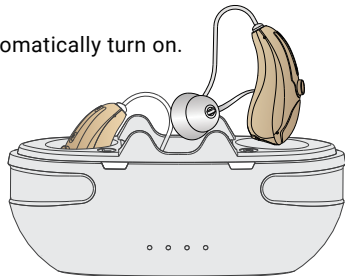
Take the hearing aid out of the charging case and the hearing aid will automatically turn on.

1. Power ON:

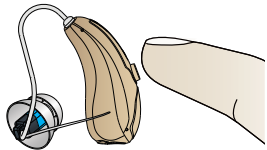
Remove the hearing aid from the charging case and it will automatically turn on after 6 beeps.

2. Power OFF:

Put the hearing aid back into the charging case, and the hearing aid will automatically shut down.



Power ON and OFF Manually

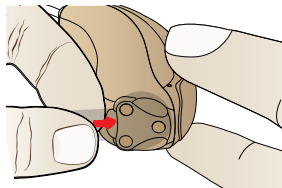
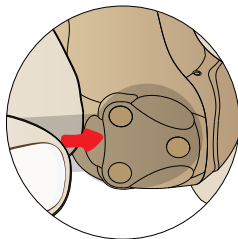


When the charging case is not nearby and the hearing aid is powered on, you can press and hold the hearing aid multi-function button for 6 seconds to power off the hearing aid. When there is no charging case and the hearing aid is powered off, you can press the hearing aid multi-function button for 3 seconds to power on the hearing aid.

How To Charge Your Hearing Aid and Charge Case

1. Notice

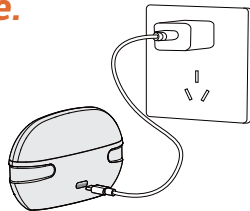
Please remove the insulation sticker from the hearing aid charging contacts before charging for the first time.







Please remove sticker before usage.

2. Charge

The charging case has a power storage function. Simply place your hearing aids into the charging case to charge, or connect them to a power source to charge both hearing aids and charging case.



3. Charging Case Battery Indicator Light

State Of Light	Battery Percentage Of Charging Case
	0 - 25%
	26 - 50%
	51 - 75%
	76 - 100%

4. Hearing Aid Charging Indicator Light

Charging State	State Of Light
Charging	The light is on
Charging completed	The light is off

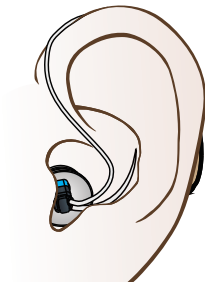
How To Wear Your Hearing Aid

Step 1: Gently hang the hearing aid body behind your ear.

Step 2: Hold the external receiver, align it with your ear canal, and insert it gently.



Step 1



Step 2

Tip: The order of the 2 steps above can be adjusted to suit your wearing habits.

Multi-function Button

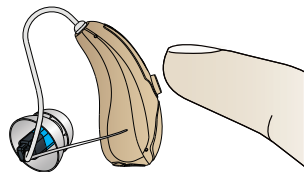
To avoid complex operation, multifunction buttons are designed to control hearing aids easily by pressing multifunction button in different ways.

Operating Mode	Function
Short press the button	Adjusting Volume
Long press the multi-function button for 2 seconds	Adjusting Mode
Long press the multi-function button for 3 seconds	Power ON
Long press the multi-function button for 6 seconds	Power OFF
Long press the multi-function button for 10 seconds	Reset Bluetooth Settings

Adjusting Volume

Click on the multifunctional button of the hearing aid to adjust the volume in a loop. When the sound reaches its maximum, there will be a beep, beep, beep prompt sound.

Volume levels loop: Level 1 to Level 11 then loops back to Level 1



Hearing Aid Modes

Hearing aids have three modes, long press the multifunction button for 2 seconds to switch the mode, and identify the mode according to different prompts.

Modes loop: M1-M2-M3-M1-M2-M3

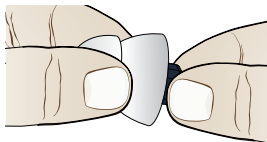
Cue Tone	Mode	Application Environment
Beep	Quiet mode	Suitable for quieter indoor
Beep Beep	Restaurant mode	Suitable for noisy indoor environments such as restaurant and shopping center
Beep Beep Beep	Outdoor mode	Suitable for outdoor environment

How To Replace Ear Domes

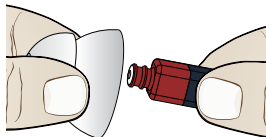
Inappropriate ear domes may cause howling and swelling, so we recommend that you replace them with appropriate ear domes.

Step 1: Pinch the external receiver and remove the ear domes.

Step 2: Select the ear domes that are suitable for your ear canal and insert them in their original positions.



Step 1



Step 2

How To Replace Wax Guards

The wax guard filter is located in the sound hole of the hearing aid which effectively prevent the cerumen (wax) from entering the hearing aid causing damage to it. Please replace the wax guard filter every 3 months and do not reuse old filters.

Step 1: Tool

Remove the tool from the shell. The tool has two ends, one empty for removal and one with the new wax guard.

Step 2: Remove

Push the empty end into the wax guard in the sound outlet, pull the used wax guard out slowly keeping the tool straight.

Step 3: Rotate

Turn the tool 180 degrees.

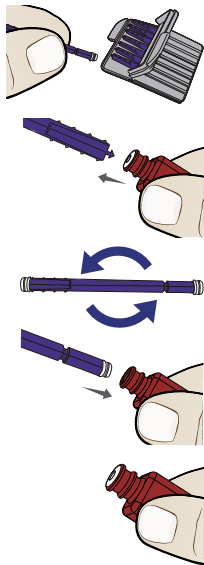
Step 4: Insert

Insert the new wax guard into the sound outlet and gently remove the tool.

Step 5: Final

The sound outlet should look like the right when you have replaced the wax guard.

Tip: Discard the used tool. Do not reuse.



How To Replace The Ric Tube

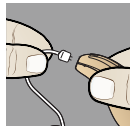
When you would like to do the RIC tube replament in needful, please feel free to reach out to us for a complimentary replacement. We recommend replacing your RIC tube every year to maintain optimal performance. Here's a simple guide on how to replace your RIC tube.



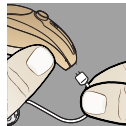
Step 1:
Use the Pin Tool (provided in the box) to push the pin out.



Step 2:
Pull the pin out from the other side using a tweezer and keep the pin aside (will need it again in step 5).



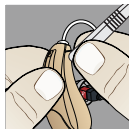
Step 3:
Gently pull out the RIC tube out of its slot.



Step 4:
Insert the replacement RIC tube in the slot with the curved side facing up.



Step 5:
Use the tweezer again to insert the pin from one side just enough to hold it in its place.



Step 6:
Once the pin is half way in the hole, gently push the pin with the tweezer all the way to secure the RIC tube.

Tip: If the pin does not easily fit into place during Step 5, it indicates that the RIC tube may not be fully inserted into its slot. Try gently pushing the RIC tube a bit further to see if that resolves the issue.

4

Bluetooth and App Functions

Bluetooth Function

"Nano Audacity" App

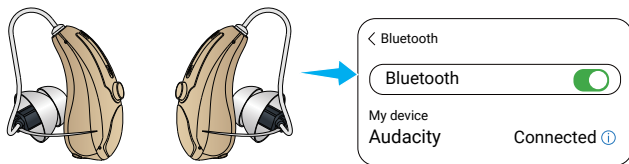
Bluetooth Function

The hearing aid has Bluetooth function and can connect to smart devices for audio transmission.

Step 1: Turn off the hearing aid and then turn it back on again.

Step 2: Turn on the Bluetooth function of your smart device.

Step 3: Open the smart device Bluetooth list, search for "Audacity" and click pairing.



2. Bluetooth Mode Button Operation

Press Mode	Function
Press multi-function button	Play/pause a song; Answer/hang up the phone
Quick double press the left	Next song
Quick double press the right	Previous song

3. Notes On Bluetooth Mode

- a. The hearing aid's Bluetooth function automatically sleep when it is not connected for 5 minutes.
- b. No re-pairing is required after the first successful connection.
- c. Automatic switching of Bluetooth/hearing aid functions.
- d. If you pause to stop music or end a call, the device will automatically enter the hearing aid function.
- e. When disconnected from the phone (Bluetooth off), the device will automatically enter the hearing aid function.

"Nano Audacity" App

1. Download the "Nano Audacity" App

- a. Android users can scan the QR code or download and install "Nano Audacity" from "Google Play".
- b. IOS users can scan the QR code or download and install "Nano Audacity" from the "App Store".



Android

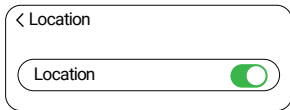
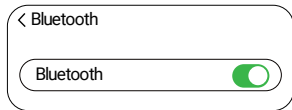


IOS

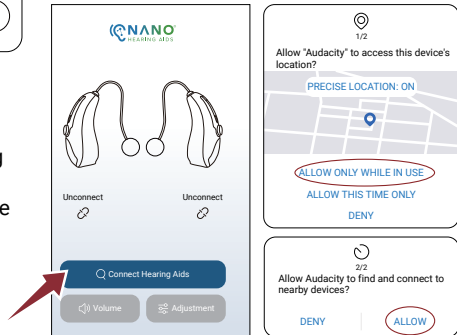
2.Connect Hearing Aids To Android Devices

Step 1: Turn on "Bluetooth" and "Location" on your Android device.

Step 2: Take the hearing aid out of the charging case and wearing your hearing aids, making sure the hearing aid is turned on.

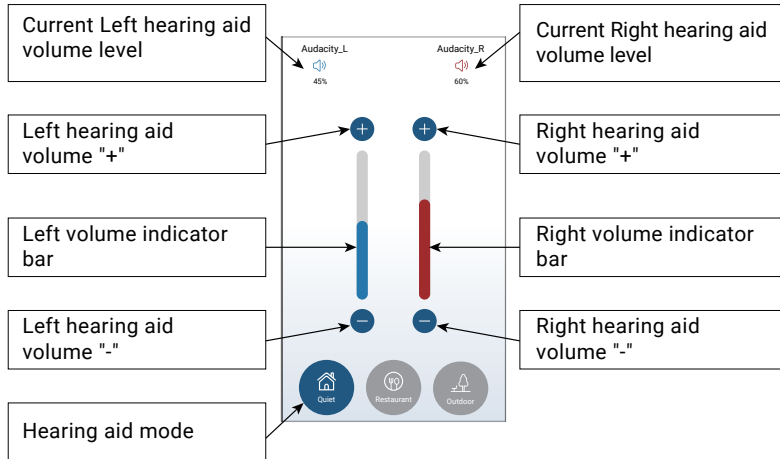


Step 3: Open the "Nano Audacity" App, click "Connect Hearing Aids", and the device will automatically connect to the hearing aid. (The first connection requires allowing the app to access location information and search for nearby devices).



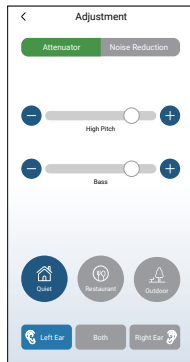
3. "Volume" Interface

Click the "Volume" button on the homepage to enter the volume and mode adjustment interface.

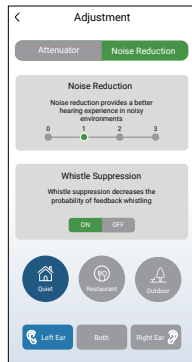


4. "Adjustment" Interface

- Click the "Adjustment" button on the homepage, enter the "Adjustment" interface, and then click "Attenuator" to adjust the high and low tones of the left/right hearing aids respectively.
- Click on the "Adjustment" button on the homepage to enter the "Adjustment" interface, then click on "Noise Reduction" to enable the "Noise Reduction" and "Whistle Suppression" functions.



a



b

5. Precautions For App Connection

- If Bluetooth is not connected for 5 minutes after the hearing aid is turned on the Bluetooth function will automatically sleep. Clicking the hearing aid button can reactivate the Bluetooth function.
- After connecting the hearing aid to Bluetooth, it defaults to the hearing aid mode and switches to audio mode when Bluetooth audio is received; When Bluetooth audio stops, it automatically switches back to hearing aid mode.

5

Precautions For Use

Precautions For Battery Use

Precautions For Battery Use

- Rechargeable batteries need to be charged in time.

Precautions For Using Hearing Aids

- If there is trauma or inflammation in the ear or you feel swelling and pain after wearing a hearing aid, you should stop wearing the hearing aid and take the hearing aid to the fitting center for consultation. If the situation cannot be improved, you should go to a doctor for treatment.
- The rays from NMR or CT scanners can damage hearing aids. Do not wear hearing aids during the above examinations. Other types of rays (such as anti-theft devices, room monitoring systems, radios, mobile phones, etc.) have less energy and will not cause damage to hearing aids, but will affect the sound quality or cause the hearing aids to produce other sounds.
- In mining areas or explosion situations, please turn off the hearing aid and use it only after confirming that there is no harm.
- Hair gel, facial cream and other cosmetics may damage the hearing aid, so the hearing aid should be removed before applying makeup.
- Do not place the hearing aid in an environment with high temperature or high humidity, and pay attention to shockproofing.

6

Care and Maintenance

Care and Maintenance

Normal Working Conditions

Transportation Conditions

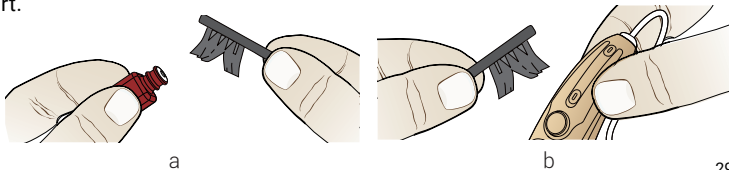
Storage Conditions

Care and Maintenance

- Use a soft, dry cloth and tissue paper to wipe away grease and moisture from the hearing aid housing. If the hearing aid is in a humid environment or is in frequent contact with sweat, place the hearing aid in a drying case containing desiccant when not wearing it at night. For details, please refer to the instructions for using desiccant on the drying case.
- Hearing aids should be placed out of reach of children to prevent children from playing with them as toys or swallowing them, causing unnecessary losses and dangers.
- Be sure to remove the hearing aid when sleeping, bathing, or swimming to prevent the hearing aid from getting wet.
- Do not immerse the hearing aid in water or other liquids to avoid damage to the hearing aid circuit.

a. Clean Sound Outlet.

b. Clean The Microphone Input Port.



Normal Working Conditions

Ambient temperature: -10°C—40°C

Relative humidity: $\leq 80\%$

Atmospheric pressure: 86Kpa-106Kpa

Power requirements: Working voltage lithium battery is 3.7V

Transportation Conditions

Moisture-proof, fall-proof and shock-proof.

Storage Conditions

Dry, clean and normal temperature.

7

Troubleshooting Guide

Malfunction	Possible reasons for	The Solution
No sound	Low volume	Increase the volume
	Equipment is out of power	Charge your hearing aid
	Microphone clogged	Clean microphone
	Wax guard is blocked	Replace wax guard
The voice was low, weak, or unclear	The battery is low	Charge your hearing aid
	The ear domes are too loose	Choose the right size to wear
	Ear domes or wax guard have wax on them	Clean dirt from ears and ear domes; replace new wax guard
	Hearing change	Contact your doctor
Abnormal Bluetooth function	Hearing aids are connected to other devices	<ol style="list-style-type: none"> 1. Disconnect Bluetooth from other devices and then restart your hearing aid 2. Press and hold the multi-function button for 10 seconds to restore Bluetooth settings

	Possible Reasons	The Solution
Abnormal bluetooth function	Your hearing aid has been connected to other smart devices	Disconnect Bluetooth from other devices and then reconnect the desired smart device
	The Bluetooth connection is unstable	Minimize the distance between hearing aids and smart device
The hearing aid whistle in the charging case	The hearing aid is placed out of position	Remove the hearing aid from the charging case and place the hearing aid in the charging case according to the "L,R" mark
	The charging case battery is low	Charge the charging case
Hearing aid is in the charging case, the hearing aid charging indicator light is not on	Poor contact of charging contact	Try reinserting the hearing aid into the charging case
	The hearing aid is placed out of position	Check to see if your hearing aid is upside down

8

Contraindications and Precautions

Contraindications

Notice

Theoretically, any person with hearing loss may become a hearing aid user. At present, it is not possible to use a comprehensive quantitative index to measure whether a person with hearing loss needs a hearing aid. However, in the following situations, medical treatment should be considered first, and then the doctor or hearing aid provider decides whether a hearing aid can be selected based on needs:

- Tinnitus occurs, unilateral or bilateral.
- Unexplained unilateral or bilateral significantly asymmetric hearing loss.
- Hearing loss accompanied by dizziness, headache, or earache.
- Conductive hearing loss due to any cause (external ear, middle ear inflammation, discharge, cerumen or foreign body embolism).
- Central and non-organic deafness.

Contraindications

Acute otitis externa, otitis, chronic suppurative otitis media (in the stage of pus infection), acute suppurative otitis media, patients allergic to product materials.

Notice

A few users who wear hearing aids for the first time complain that their ears seem blocked and their voice is too loud, etc. They will gradually adapt within three months.

9

FCC Warning

This device complies with Part 15 of the FCC Rules. Operation is subject to the following two conditions: (1) This device may not cause harmful interference, and (2) this device must accept any interference received, including interference that may cause undesired operation. Note: This equipment has been tested and found to comply with the limits for a Class B digital device, pursuant to part 15 of the FCC Rules.

These limits are designed to provide reasonable protection against harmful interference in a residential installation. This equipment generates, uses and can radiate radio frequency energy and, if not installed and used in accordance with the instructions, may cause harmful interference to radio communications. However, there is no guarantee that interference will not occur in a particular installation.

If this equipment does cause harmful interference to radio or television reception, which can be determined by turning the equipment off and on, the user is encouraged to try to correct the interference by one or more of the following measures:

- Reorient or relocate the receiving antenna.
- Increase the separation between the equipment and receiver.

- Connect the equipment into an outlet on a circuit different from that to which the receiver is connected.
- Consult the dealer or an experienced radio/TV technician for help.

NOTE 2: Any changes or modifications to this unit not expressly approved by the party responsible for compliance could void the user's authority to operate the equipment.

FCC ID: 2A7JZ-002

Our dedicated team of hearing journey guides are always here to lend a hand by email, chat or phone.

support@nanohearingaids.com

Customer Success Team

619-738-2438

