

# IP65 Non-Corrosive Fitting



## Installation Instructions p.1

or models: T8 110V Standard and Emergency Fittings



**This installation must be carried out by a qualified electrician.**

**Please read these instructions carefully before installation.**

**Leave a copy for the user/maintenance engineer for future reference.**

### Specification

- IP65 Non-Corrosive Fitting
- Class I (must be earthed)
- Work environment temperature: -25°C - 50°C
- Supply voltage: 110V AC

- DO NOT install this luminaire into new plaster or damp areas.
- Please contact your supplier if it is your intention to link these fittings.

### Maintenance

- Regular cleaning of the luminaire, especially diffusers, and replacement of lamp are recommended to ensure maximum efficiency.
- In the case of lamp failure, switch off luminaire and replace lamp with correct replacement.
- Please ensure the lamp is carefully disposed of in line with WEEE Directive Regulations.

### Important User Information

- Always switch off mains supply before servicing, fitting or changing lamp.
- This fitting must be earthed.
- IP65 rated luminaires are protected against dust and jets of water. It is suitable for installation in locations containing a bath or shower as defined by the I.E.E wiring regulations, zones 1, 2 & 3 where water jets are likely.

### Installation Instructions

- These luminaires are for indoor and outdoor use.
- DO NOT DRILL THE BODY FOR MOUNTING PURPOSES OR OTHERWISE.
- The luminaire must be mounted using surface fixing clips.
- The fixing points are located on the mounting brackets.
- Raise the luminaire and insert supply cable through the cable entry gland(s) provided and secure the luminaire in position.
- Connect the supply cable to the terminal block as illustrated in Figure 1 (overleaf).
- Ensure all clips are fully seated and cable entries are sealed.
- IMPORTANT: Ensure that ALL electrical connections are tight with no loose strands, including factory made connections.



Product complies with all relevant European standards



# IP65 Non-Corrosive Fitting

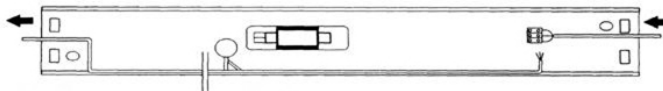
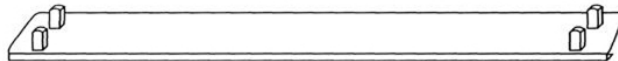
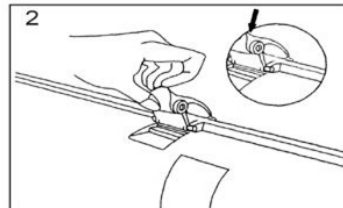
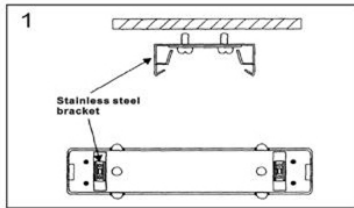


## Installation Instructions p.2

or models: T8 110V Standard and Emergency Fittings



### Installation Instructions Diagram



# IP65 Non-Corrosive Fitting



## Installation Instructions p.3

For models: T8 110V Standard and Emergency Fittings



### Testing

The emergency light must be tested and inspected regularly in accordance with local codes of practice.

Note: for safety reasons, tests should be carried out during daylight hours.

The minimum recommended test schedule is as follows:

After installation, allow 36 hours to ensure full battery charge, and then interrupt the supply; check after 3 hours that the tube is still lighting.

1. Daily - Check that the charge indicator LED is working.
2. Monthly – interrupt the power supply for a short period and check the lamp remains illuminated.
3. Six-monthly – interrupt the power supply and check the lamp remains illuminated after 1 hour.
4. At the end of 3rd year, and annually thereafter – check 3 hour duration: batteries must be replaced when they can no longer support 3 hour operation.
5. Complete record sheet on installation and retain in maintenance file.
6. Update file with on-going test records for inspection by fire officer or other duly authorised person.

Month	Test	Year 1		Year 2		Year 3		Year 4		Year 5	
		signed	date	signed	date	signed	date	signed	date	signed	date
1	short										
2	short										
3	short										
4	short										
5	short										
6	1 hour										
7	short										
8	short										
9	short										
10	short										
11	short										
12	short							x	x	x	x
	3 hour	x	x	x	x	x	x				

### Guarantee

This product is guaranteed for a period of 1 year from the date of purchase. The guarantee is invalid in the case of improper use, tampering, removal of the Q.C. date label, installation in an improper working environment or installation not according to the current edition of the I.E.E. Wiring Regulations (BS7671). The guarantee is also invalidated if the luminaire has been Mega tested. Should this product fail during the guarantee period it will be replaced free of charge, subject to correct installation and return of the faulty unit. We do not accept responsibility for any installation costs associated with the replacement of this product. If a PIR is used in conjunction with any Red Arrow lighting product we do not accept any responsibility for premature failure of lamps or control gear. Your statutory rights are not affected. We reserve the right to alter specifications without prior notice.