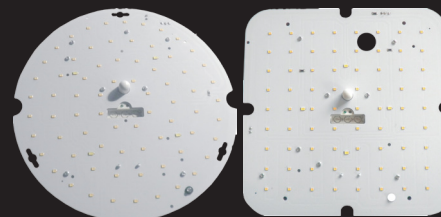


15W 10% Dimming Corridor Function LED Emergency Tray with Microwave Sensor Installation Instructions p.1



For models: E15LEDEMMSDIM & E15LEDEEMMSDIM

This installation must be carried out by an electrician. Please read these instructions carefully before installation. Leave a copy for the user/maintenance engineer for future reference.

Specification

- 15W LED Tray
- Wattage: 15W LED
- LED: 72pcs High Brightness 2835 SMD LED Chips
- Colour Rendering Index: >75
- Lumen Output: 1500lms
- Dims down to 10% when area is unoccupied

Specification of Microwave Sensor

- Power Supply: 220-240V
- Power Frequency: 50/60Hz
- HF system: 5.8GHz CW radar, ISM brand
- Max Load: 200W
- Transmission Power: <0.2mW
- Power Consumption: approx. 0.5W
- Installation sit: Indoors, ceiling mounting
- Reach: 1-10m (radii), adjustable
- Time setting: 10 seconds to 30 minutes
- Detection Angle: 360°C
- Light control: 2~2000 Lux

NOTE: The high frequency output of this Sensor is <0.2Mw that is just one 5000th of the transmission power of a mobile phone or the output of a microwave oven.

Before Installation

- This instruction should be read carefully before installation, it contains information important for safety and should be retained for future reference.
- This unit contains a combined inverter, LED converter and battery charger suitable for nickel-cadmium batteries, a charge indicator, a pack of nickel-cadmium batteries.
- Class I product, case must be earthed.
- The model is complete with 10% light output when the sensor is on standby, and gives 100% light output when the sensor is activated.

Important Installation Information

- Always switch off mains before installation.
- All additional wiring to the module must be with high temperature wire rated at a minimum of 105°C, with a minimum conductor diameter of 0.75mm.
- A separate enclosure may be required if this unit is to be used in dusty and wet environments.
- Connect the mains supply to the module.

Installation Instructions

1. Ensure the mains supply is switched off.
2. Ensure there is at least 100mm of free space around the luminaire.
3. Check for concealed cables before drilling fixing holes.
4. Remove the diffuser from the base by twisting the trim.
5. Loosen the three retaining screws on the gear tray and twist off the gear tray.
6. Select a suitable cable entry point provided, or by drilling into the base (notice the size of the cable gland provided).
7. Position and fix the base to a solid surface using the screws supplied.
8. Enter the supply cable into the fitting through the previously selected hole ensuring that the hole is smooth or a grommet is fitted.
9. Terminate the cable into the terminal block mounted on the underside of the gear tray, ensuring correct polarity is observed and the fitting is earthed and any bare conductors are sleeved.

10. Secure the gear tray and retighten the retaining screws.
11. There are two types of cable glands both suitable for most occasions. When the heavy duty cable gland (grey in colour) using for extremely humid areas, three spaces shall be fitted between the gear tray and the base to lift up the gear tray.
12. The model is complete with 10% light output when the sensor is on standby, and gives 100% light output when the sensor is activated.

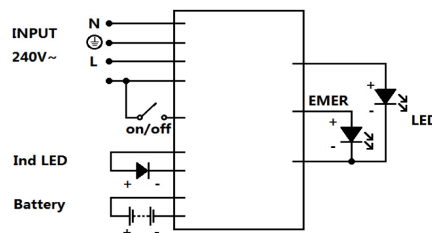
Emergency

- The battery should be charged for an hour prior to functional testing and will not achieve full duration until it's been charged for 24 hours.
- Batteries that have been left discharged for extended periods may need one or more full charge / discharge cycles to restore their capacity.
- Routine testing should be done in accordance with the recommendations of BS5266.

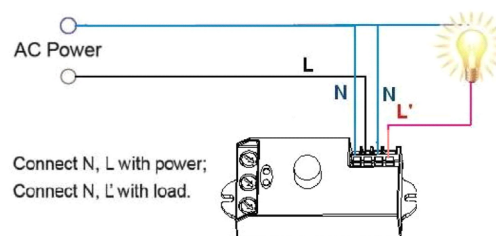
Warranty

- This unit is guaranteed for 5 years.
- Any modifications made by anyone other than the manufacturer could render the unit unsafe and invalid the warranty.
- Contact us if the unit is found to be faulty.

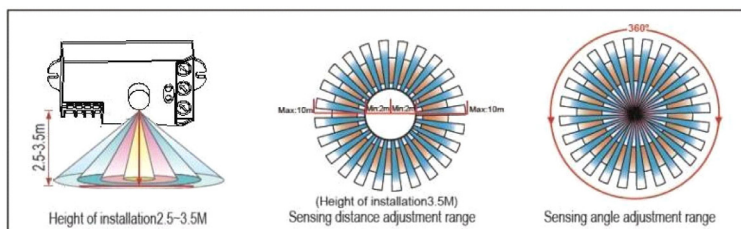
Circuit Diagram



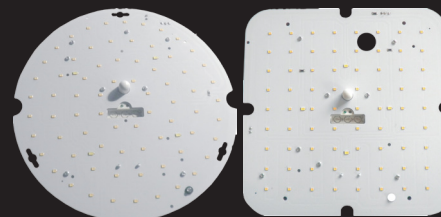
Connection Illumination



Induction Range Diagram



15W 10% Dimming Corridor Function LED Emergency Tray with Microwave Sensor Installation Instructions p.2



For models: E15LEDEMMSDIM & E15LEDSEMMSDIM



SENS

Reach Setting (Sensitivity)

Reach is the term used to describe the radius of the circular detection zone produced on the ground. After mounting the sensor light at a height of 2.5m, turn the reach control completely in anti-clockwise direction to select minimum reach (approx. 1m radius), and turn the reach control completely in a clockwise direction to select the maximum reach (approx. 10m radius). The LED indicator will flash when the reach control is rotated. It flashed 1 to 10 times, representing 1m to 10m for the radius of the detection zone.

NOTE: The above detection distance is measured using a person who is between 1.6m~1.7m tall with an average build, moving at a speed of 1.0~1.5m/sec. If any of these variables changed, the detection distance will also resultantly change.



TIME

Time Setting

The light can be set to stay ON for any period of time between approx. 10 seconds (dial turned fully anti-clockwise) and a maximum of 30 minutes (dial turned fully clockwise). Any movement detected during the 'on' time will reset the timer. The LED indicator will flash when adjusting the time setting dial. The number of flashes means the following: 1 flash = 10 seconds, 2 flashes = 1 minute, 3 flashes = 2 minutes, 4 flashes = 5 minutes, 5 flashes = 8 minutes, 6 flashes = 10 minutes, 7 flashes = 15 minutes, 8 flashes = 20 minutes, 9 flashes = 25 minutes, 10 flashes = 30 minutes.

NOTE: After the light switches off, it takes approx. 1 second before it is able to start detecting movement again. The light will only switch on in response to movement once this period has elapsed.



LUX

Light-control Setting

The chosen light response threshold can be infinitely from approx. 2-2000lux. Turn it fully clockwise to select dusk-to-dawn operation at about 2 lux. Turn it fully clockwise to select daylight operation at about 2000lux. The knob must be turned fully clockwise when adjusting the detection zone and performing the walk test in daylight.

Troubleshooting

Malfunction	Cause	Remedy
The load will not work	wrong light-control setting selected	adjust setting
	load faulty	change load
	mains switch OFF	Switch ON
The load work always	continuous movement in the detection zone	check zone setting
The load work without any identifiable movement	the sensor not mounted for detecting movement reliably	securely mount enclosure
	movement occurred, but not identified by the sensor (movement behind wall, movement of a small object in immediate lamp vicinity etc.)	check zone setting
The load will not work despite movement	rapid movements are being suppressed to minimize malfunctioning or the detection zone you have set is too small	check zone setting

Testing

- The emergency light must be tested and inspected regularly in accordance with local codes of practice. NOTE: For safety reasons tests should be carried out during daylight hours.

The minimum recommended test schedule is as follows:

After installation, allow 36 hours to ensure full battery charge, and then interrupt the supply; check after 3 hours that the tube is still illuminated.

- Daily check that the charge indicator LED is working.
- Monthly, interrupt power supply for a short period and check tube lights.
- Six monthly, check 1 hour duration.
- At end of 3rd year, and annually thereafter, check 3 hour duration: batteries must be replaced when they can no longer support 3 hour operation.
- Complete record sheet on installation and retain in maintenance file.
- Update file with ongoing test records for inspection by fire officer or other authorised person.

Month	Test	Year 1		Year 2		Year 3		Year 4		Year 5	
		signed	date	signed	date	signed	date	signed	date	signed	date
1	Functional										
2	Functional										
3	Functional										
4	Functional										
5	Functional										
6	1 hour										
7	Functional										
8	Functional										
9	Functional										
10	Functional										
11	Functional										
12	1 hour										
	3 hour										

Guarantee

This product is guaranteed for a period of 5 year from the date of purchase. The guarantee is invalid in the case of improper use, tampering, removal of the Q.C. date label, installation in an improper working environment or installation not according to the current edition of the I.E.E. Wiring Regulations (BS7671). The guarantee is also invalidated if the luminaire has been Mega tested. Should this product fail during the guarantee period it will be replaced free of charge, subject to correct installation and return of the faulty unit. We do not accept responsibility for any installation costs associated with the replacement of this product. If a PIR is used in conjunction with any Red Arrow lighting product we do not accept any responsibility for premature failure of lamps or control gear. Your statutory rights are not affected. We reserve the right to alter specifications without prior notice.

RoHS



Product is suitable for mounting on flammable material



Product complies with all relevant European standards