

## Foldit Playset Classic

PS-FPSC

### Instruction Manual

Please read carefully before assembly and use

- WARNING:** This product is intended for use by children from ages 12 months to 36 months.
  - WARNING:** Only for indoor and outdoor use. Only for domestic use.
  - WARNING:** The product has the capacity to hold a maximum of 1 children at different position with a combined weight of 35 kilos(77lb).
  - WARNING:** Prior to assembly, this package contains small parts which may be a choking hazard; please keep this product away from all children until it's assembled. Please dispose of all plastic bags immediately after assembly.
  - WARNING:** Adult assembly required. Adult supervision required.
- Warning! Keep away from fire!

This product is a lightweight, easy to assemble fun activity centre for children from ages 12 months to 36 months. It is not intended for children under 12 months, and may cause injury, due to an inability to safely use the product.

Remember: Please inspect your the Foldit playset classic every time before use for any signs of deterioration. If the tubes or joiners are cracked or damaged, please replace the part immediately. Otherwise serious injuries will occur to you child.

Please keep this book in a safe place for future reference.

#### INSTALLATION INSTRUCTIONS

- ALWAYS place the equipment on level ground, not less than 6 ft (1.8 m) from any structure or obstruction such as a fence, garage, house, overhanging branches, laundry lines, or electrical wires.
- DO NOT install home playground equipment over concrete, asphalt, packed earth, grass, carpet, or any other hard surface. A fall onto a hard surface can result in serious injury to the equipment user.
- This equipment should never be placed on hard surfaces such as concrete or asphalt or very soft surfaces. If your child falls , serious injury or even death may occur.
- Shredded bark mulch, wood chips, fine sand or fine gravel are considered to be acceptable shock-absorbing surfaces when installed and maintained at a sufficient depth under and around playground equipment. However each material is only effective when properly maintained. Materials should be checked periodically and replenished to maintain correct depth as determined necessary for your equipment. Otherwise serious injuries may occur from a fall.
- Please install this equipment facing away from the sun to avoid causing dizziness whilst playing.
- To prevent serious injury, children must not use the equipment until properly installed.
- The Equipment is not required to be anchored.

#### OPERATION INSTRUCTIONS

Your children's safety is our primary concern. Observing the following statements and warnings reduces the likelihood of serious or fatal injury. Help us ensure years of safe, active play by reading and following these recommendations.

1. The Foldit playset classic is designed for children of the ages of not less than 12 months and not greater than 36 months, with a total combined maximum weight of 35 kilograms or kgs(77lb). The maximum number of children using the product at one time is 1.
2. Children must be supervised at all times that this product is in use. This product is not suitable for children under 12 months old.
3. DO NOT wear loose fitting clothing or shoes, (i.e. draw strings on hoods, mitten cords, hat strings, scarves, helmets, ponchos or heavy neckties). Children's loose clothing can cause a potential danger of strangulation while playing.
4. DO NOT walk close to, in front of, behind, or between moving equipment or children sliding.
5. DO NOT use this product in a manner other than intended.
6. DO NOT use this product when it is wet as it will become slippery and serious injury may result.
7. DO NOT attach additional items such as jump ropes, clothesline, pet leashes or other items not designed for use with the playground equipment, unless the attachment has our specific approval or is sold as one of our products, as they may cause a strangulation hazard.

8. DO NOT allow objects to be placed under the product. Boxes, bicycles, trikes, toys or any other hard object on the ground under the product will increase the risk of injury to children dropping to the ground.

9. Parents should always dress children appropriately (examples would include the use of well-fitting shoes and the avoidance of ponchos, scarfs, and other loose-fitting clothing that is potentially hazardous while using equipment).

10. DO NOT install this product over concrete, asphalt, packed earth, or any other hard surface. A fall onto a hard surface can result in serious injury to the product user.

11. DO NOT let children use this product until properly assembled. Place this product on LEVEL GROUND not less than 6 feet(1.8 m) from any structures or obstacles such as fences, overhanging branches, laundry or electrical lines, garages, sheds or houses.

12. Dispose of all packaging properly after unit has been assembled.

13. The maximum fall height for this product is determined to be 2.4 feet.

14. The use zone for eezy peezy Foldit Playset classic shall extend no less than 72 in. (1830mm) from all sides of the play structure.

#### DISPOSAL INSTRUCTIONS

Please always remember to disassemble and dispose of the playground equipment in such a way that no unreasonable hazards will exist at the time the product is discarded.

#### IDENTIFICATION OF CONFORMANCE TO THIS STANDARD:

This product conforms to ASTM F 1148, Consumer Safety Performance Specification for Home Playground Equipment.

#### MAINTENANCE INSTRUCTIONS

1. Check all joiners and tubes before use every time for cracking or deterioration. If either the joiners or the tubes are cracked or damaged please replace the damaged part immediately. It is particularly important that this procedure be followed at the beginning of each season. Replacement should be made in accordance with the instructions. If these checks are not carried out the product could overturn or cause a fall.
2. Please make sure to carry out checks and maintenance of the main parts of this product at regular intervals. If these checks are not carried out, this product may could overturn or cause a fall. Please correctly assemble this product as per the instructions, otherwise it will cause danger to your child.
3. Check all nuts and bolts twice monthly during the usage season for tightness and tighten as required. It is particularly important that this procedure be followed at the beginning of each season.
4. Do not use when the temperature drops below 32 degrees F, (zero degrees Celsius).
5. Check all coverings for bolts and sharp edges twice monthly during usage season to be certain they are in place. Replace when necessary. It is especially important to do this at the beginning of each new season.
6. Do not increase this toy accessories.
7. At the beginning of each play season: Tighten all hardware.

Reinstall the Foldit playset classic that were removed for the cold season.

Rake and check depth of loose fill protective surfacing materials to prevent compaction and to maintain appropriate depth. Replace as necessary.

8. Twice a month during play season:

Tighten all hardware.

Rake and check depth of loose fill protective surfacing materials to prevent compaction and to maintain appropriate depth. Replace as necessary.

9. At the end of each play season or when the temperature drops below 32 degree F, (0 degree C):

Take this product indoors or do not use.

Rake and check depth of loose fill protective surfacing materials to prevent compaction and to maintain appropriate depth. Replace as necessary.

#### ASSEMBLY INSTRUCTIONS

Complete assembly of the Foldit playset classic must be conducted by an adult. This product contains small parts, which may be a choking hazard. Please keep all parts away from children until fully assembled.

Please refer to the right joiner and tube installation.

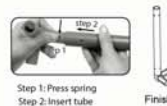
#### LIMITED WARRANTY

The manufacturer warrants this product to be free of manufacturing defects for a period of ONE year from date of purchase. This limited warranty does not cover normal wear and tear, or any damage or failure caused by improper assembly, maintenance, storage or use of this product.

This Limited Warranty will be voided if this product is ever modified in anyway or used in any manner other than for recreational use, or used as a rental.

ToyMonster does not offer an extended warranty. If you have purchased an extended warranty, it must be honored by the store at which it was purchased.

This warranty is extended only to the original purchaser with a receipt and is non-transferable. Please keep your receipt in a safe place.



## IMPORTANT CONSUMER INFORMATION SHEET FOR PLAYGROUND SURFACING MATERIAL

The U.S. Consumer Product Safety Commission(CPSC) estimates that about 100,000 playground equipment related injuries resulting from falls to the ground surface are treated annually in U.S. hospital emergency rooms. Injuries involving this hazard pattern tend to be among the most serious of all playground injuries, and have the potential to be fatal, particularly when the injury is to the head. The surface under around the playground equipment can be a major factor and in determining the injury causing potential of a fall. It is self evident that a fall onto a shock-absorbing surface is less likely to cause a serious injury than a fall onto a hard surface. Playground equipment should never be placed on a hard surface such as concrete or asphalt and while grass may appear to be acceptable it may quickly turn to hard packed earth in areas of high traffic. Shredded bark mulch, wood chips, fine sand or fine gravel are considered to be acceptable shock absorbing surfaces when installed and maintained at a sufficient depth under and around playground equipment. The following table lists the maximum height from which a child would not be expected to sustain a life-threatening head injury in a fall onto four different loose-fill surfacing materials if they are installed and maintained at depths of 6, 9, and 12 in. However, all injuries due to a fall cannot be prevented no matter what surfacing material is used.

#### Fall Height in Feet From Which a Life Threatening Head Injury Would Not Be Expected

Type of Material	6 in. depth	9 in.	12 in.
Double Shredded			
Bark Mulch	6	10	11
Wood Chips	6	7	12
Fine Sand	5	5	9
Fine Gravel	6	7	10

It is recommended that a shock-absorbing material should extend a minimum of 6 ft. in all directions from the perimeter of stationary equipment such as climbers and slides. However, because children may deliberately jump from a moving swing, the shock-absorbing material should extend in the front and rear of a swing a minimum distance of 2 times the height of the pivot point measured from a point directly beneath the pivot point on the supporting structure.

This information is intended to assist in comparing the relative shock-absorbing properties of various materials. No particular material is recommended over another. However, each material is only effective when properly maintained. Materials should be checked periodically and replenished to maintain correct depth as determined necessary for your equipment. The choice of a material depends on the type and height of the playground equipment, the availability of the material in your area and its cost.

**Note: The maximum fall height for this product is 6 feet. The minimum ground clearance between the bottom of the suspended plays and the playing or ground surface must be 8 inches.**

**This information has been extracted from the CPSC publication "Playground Safety". Copies of these reports can be obtained by sending a postcard to the: Office of Public Affairs, U.S. Consumer Product Safety Commission, Washington, D.C., 20207 or call the toll-free hot line: 1-800-638-2772.**

#### REPLACEMENT PARTS & SERVICE

Care has been taken during the manufacturing and packing of this product to ensure that you receive quality merchandise. However, should you have damaged or missing parts, do not return this unit to the store, please send email to us. Our email address is: [cs@toymonster.net](mailto:cs@toymonster.net)

STY#: TM450  
Distributed by  
National Sporting Goods  
376 Hollywood Ave  
Fairfield, New Jersey 07004  
BATCH CODE: TM1704 012017  
Made in China



**SECTION 4 OF THE CONSUMER PRODUCT SAFETY COMMISSION'S OUTDOOR HOME PLAYGROUND SAFETY HANDBOOK\***

Select Protective Surfacing-One of the most important things you can do to reduce the likelihood of serious head injuries is to install shock-absorbing protective surfacing under and around your play equipment. The protective surfacing should be applied to a depth that is suitable for the equipment height in accordance with ASTM Specification F 1292. There are different types of surfacing to choose from; whichever product you select, follow these guidelines:

**1. Loose-Fill Materials:**

Maintain a minimum depth of 9 inches of loosefill materials such as wood mulch/chips, engineered wood fiber (EWF), or shredded/recycled rubber mulch for equipment up to 8 feet high; and 9 inches of sand or pea gravel for equipment up to 5 feet high. **NOTE:** An initial fill level of 12 inches will compress to about a 9- inch depth of surfacing over time. The surfacing will also compact, displace, and settle, and should be periodically refilled to maintain at least a 9- inch depth.

2. Use a minimum of 6 inches of protective surfacing for play equipment less than 4 feet in height. If maintained properly, this should be adequate. (At depths less than 6 inches, the protective material is too easily displaced or compacted.)

**NOTE:** Do not install home playground equipment over concrete, asphalt, or any other hard surface. A fall onto a hard surface can result in serious injury to the equipment user. Grass and dirt are not considered protective surfacing because wear and environmental factors can reduce their shock absorbing effectiveness. Carpeting and thin mats are generally not adequate protective surfacing. Ground level equipment – such as a sandbox, activity wall, playhouse or other equipment that has no elevated play surface - does not need any protective surfacing.

3. Use containment, such as digging out around the perimeter and/or lining the perimeter with landscape edging. Don't forget to account for water drainage.

Check and maintain the depth of the loose-fill surfacing material. To maintain the right amount of loose- fill materials, mark the correct level on play equipment support posts. That way you can easily see when to replenish and/or redistribute the surfacing.

4. Poured-In-Place Surfaces or Pre-Manufactured Rubber Tiles -You may be interested in using surfacing other than loose-fill materials - like rubber tiles or poured-in-place surfaces.

Installations of these surfaces generally require a professional and are not "do-it-yourself" projects.

Installations of these surfaces generally require a professional and are not "do-it-yourself" projects. Review surface specifications before purchasing this type of surfacing. Ask the installer/maintainer for a report showing that the product has been tested to the following safety standard: ASTM F 1292 Standard Specification for Impact Attenuation of Surfacing Materials within the Use Zone of Playground Equipment. This report should show the specific height for which the surface is intended to protect against serious head injury. This height should be equal to or greater than the fall height - vertical distance between a designated play surface (elevated surface for standing, sitting, or climbing) and the protective surfacing below - of your play equipment.

Check the protective surfacing frequently for wear.

5. Placement-Proper placement and maintenance of protective surfacing is essential. Be sure to: Extend surfacing at least 6 feet from the equipment in all directions.

For to-fro swings, extend protective surfacing in front of and behind the swing to a distance equal to twice the height of the top bar from which the swing is suspended.

For tire swings, extend surfacing in a circle whose radius is equal to the height of the suspending chain or rope, plus 6 feet in all directions.

