

SHACKLE FITTING, SINGLE SHEAVE, 2-12t



419



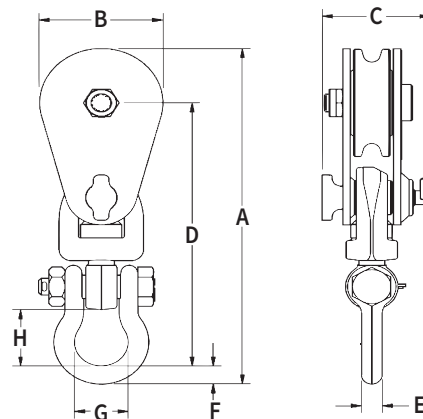
L-170



L-160



417



- Opening feature permits easy insertion of rope without reeving, or while the block is suspended.
- Bolt for opening feature is retained, to ensure no lost bolts.
- Forged steel swivel tees, yokes and shackles.
- Can be furnished with bronze bushings or roller bearings.
- Center pin equipped with pressure lube fitting.
- All sizes feature sheave grooves suited for a range of wire line diameters.
- Meets or exceeds all requirements of ASME B30.26 including identification ductility, design factor, proof load and temperature requirements. Importantly, these blocks meet other critical performance

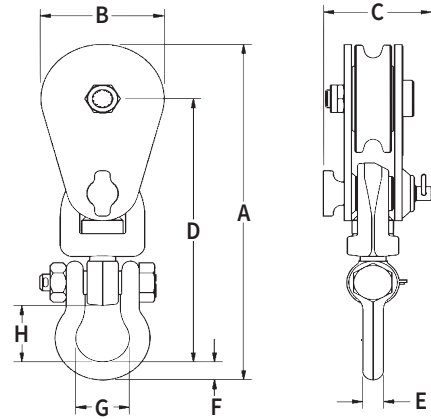
requirements including fatigue life and material traceability, not addressed by ASME B30.26.

- "All Alloy" snatch blocks feature a significant reduction in weight compared to snatch blocks made of non-alloy materials.
- "Lebus, General Purpose" snatch blocks (with shackle or hook) feature an easy-to-open bolt design. The retaining bolt is released by rotating the fitting assembly, no tools required.
- Crosby's Engineered Solutions Group is ready to discuss your requirements and help select or develop the ideal block for your application. Call us at 1-800-777-1555.

Working Load Limit (t)*	Wire Rope Size (in)	Sheave Diameter (in)	Bearing Code	Weight Each (lb)	Catalog No.	Description	Stock No.	Dimensions (in)							
								A	B	C	D	E	F	G	H
2 tonnes															
2	5/16 - 3/8	3	BB	4	419 w/Eye	Light Champion	109037 †	8.67	3.00	2.64	6.61	0.56	0.56	1.38	1.38
2	5/16 - 3/8	3	BB	5	419	Light Champion	109091	9.27	3.00	2.64	7.27	0.50	0.50	1.32	1.56
4 tonnes															
4	3/8 - 1/2	4.5	BB	12	419	Light Champion	109064	13.38	4.24	3.13	10.57	0.62	0.69	1.70	2.00
5 tonnes															
5	3/8 - 1/2 ‡	4	BB	11	L-170	Lebus, General Purpose	599828	13.88	4.50	2.94	10.94	0.62	0.69	1.70	2.00
5	3/8 - 1/2 ‡	4	RB	11	L-170	Lebus, General Purpose	599837	13.88	4.50	2.94	10.94	0.62	0.69	1.70	2.00
6 tonnes															
6**	3/8 - 1/2	5	BB	13	L-160	Lebus, Heavy Duty	599524	13.82	5.12	3.69	10.57	0.62	0.69	1.70	2.00
6**	3/8 - 1/2	5	RB	13	L-160	Lebus, Heavy Duty	599533	13.82	5.12	3.69	10.57	0.62	0.69	1.70	2.00
8 tonnes															
8	5/8 - 3/4	6	BB	28	419	Light Champion	109126	18.93	6.00	4.19	14.68	1.25	1.25	3.00	3.47
8	5/8 - 3/4	6	RB	28	419	Light Champion	109153	18.93	6.00	4.19	14.68	1.25	1.25	3.00	3.47
8	5/8 - 3/4	8	BB	33	419	Light Champion	109224	20.99	8.12	4.19	15.68	1.25	1.25	3.00	3.47
8	5/8 - 3/4	8	RB	33	419	Light Champion	109251	20.99	8.12	4.19	15.68	1.25	1.25	3.00	3.47
8	5/8 - 3/4	10	BB	43	419	Light Champion	109322	23.06	10.12	4.19	16.75	1.25	1.25	3.00	3.47
8	5/8 - 3/4	10	RB	43	419	Light Champion	109359	23.06	10.12	4.19	16.75	1.25	1.25	3.00	3.47
8	5/8 - 3/4	12	BB	55	419	Light Champion	109420	25.87	12.12	4.19	18.56	1.25	1.25	3.00	3.47
8	5/8 - 3/4	12	RB	55	419	Light Champion	109457	25.87	12.12	4.19	18.56	1.25	1.25	3.00	3.47
8	5/8 - 3/4	14	BB	67	419	Light Champion	109527	27.37	14.12	4.19	19.06	1.25	1.25	3.00	3.47
8	5/8 - 3/4	14	RB	67	419	Light Champion	109545	27.37	14.12	4.19	19.06	1.25	1.25	3.00	3.47
12 tonnes															
12**	5/8 - 3/4	5.75	BB	29	L-160	Lebus, Heavy Duty	599588	19.03	6.00	4.19	14.78	1.25	1.25	3.00	3.47
12**	5/8 - 3/4	5.75	RB	29	L-160	Lebus, Heavy Duty	599597	19.03	6.00	4.19	14.78	1.25	1.25	3.00	3.47
12	3/4 - 7/8	6	BB	28	417	All Alloy	168972	18.93	6.00	4.19	14.68	1.25	1.25	3.00	3.47
12	3/4 - 7/8	6	RB	28	417	All Alloy	193757	18.93	6.00	4.19	14.68	1.25	1.25	3.00	3.47
12	3/4 - 7/8	8	BB	34	417	All Alloy	168990	20.99	8.12	4.19	15.68	1.25	1.25	3.00	3.47
12	3/4 - 7/8	8	RB	34	417	All Alloy	193819	20.99	8.12	4.19	15.68	1.25	1.25	3.00	3.47
12	3/4 - 7/8	10	BB	42	417	All Alloy	193882	23.06	10.12	4.19	16.75	1.25	1.25	3.00	3.47
12	3/4 - 7/8	10	RB	42	417	All Alloy	193935	23.06	10.12	4.19	16.75	1.25	1.25	3.00	3.47

* Ultimate Load is 4 times the Working Load Limit. ** Ultimate Load is 3.5 times the Working Load Limit. † Fitted with 1-1/4" ID Swivel Eye. ‡ Special Dual Groove Sheave also accepts 1-1/4" Manilla Rope.

**SHACKLE FITTING,
SINGLE SHEAVE, 15-60t**



- Opening feature permits easy insertion of rope without reeving, or while the block is suspended.
- Bolt for opening feature is retained, to ensure no lost bolts.
- Forged steel swivel tees, yokes and shackles.
- Can be furnished with bronze bushings or roller bearings.
- Center pin equipped with pressure lube fitting.
- All sizes feature sheave grooves suited for a range of wire line diameters.
- Meets or exceeds all requirements of ASME B30.26 including identification, ductility, design factor, proof load and temperature requirements.

Importantly, these blocks meet other critical performance requirements including fatigue life and material traceability, not addressed by ASME B30.26.

- All blocks are RFID EQUIPPED.
- "All Alloy" snatch blocks feature a significant reduction in weight compared to snatch blocks made of non-alloy materials.
- Crosby's Engineered Solutions Group is ready to discuss your requirements and help select or develop the ideal block for your application. Call us at 1-800-777-1555.

Working Load Limit (t)*	Wire Rope Size (in)	Sheave Diameter (in)	Bearing Code	Weight Each (lb)	Catalog No.	Description	Stock No.	Dimensions (in)							
								A	B	C	D	E	F	G	H
15 tonnes															
15	3/4 - 7/8	8	BB	59	421	Champion	108308	23.00	8.12	5.09	17.19	1.50	1.75	3.12	3.12
15	3/4 - 7/8	8	RB	59	421	Champion	108309	23.00	8.12	5.09	17.19	1.50	1.75	3.12	3.12
15	3/4 - 7/8	10	BB	68	421	Champion	108390	24.75	10.12	5.09	17.94	1.50	1.75	3.12	3.12
15	3/4 - 7/8	10	RB	68	421	Champion	108391	24.75	10.12	5.09	17.94	1.50	1.75	3.12	3.12
15	3/4 - 7/8	16	BB	130	419	Light Champion	109607	31.75	16.12	5.09	22.00	1.50	1.75	3.12	3.12
15	3/4 - 7/8	16	RB	130	419	Light Champion	109625	31.75	16.12	5.09	22.00	1.50	1.75	3.12	3.12
15	7/8 - 1	18	BB	159	419	Light Champion	109643	33.12	18.12	5.09	22.25	1.50	1.75	3.12	3.12
15	7/8 - 1	18	RB	159	419	Light Champion	109661	33.12	18.12	5.09	22.25	1.50	1.75	3.12	3.12
20 tonnes															
20	1 - 1-1/8	8	BB	92	431	Super Champion	121022	26.57	8.12	6.00	19.76	2.00	2.75	3.72	4.00
20	1 - 1-1/8	8	RB	92	431	Super Champion	121040	26.57	8.12	6.00	19.76	2.00	2.75	3.72	4.00
20	1 - 1-1/8	10	BB	112	431	Super Champion	121095	28.64	10.12	6.00	20.72	2.00	2.75	3.72	4.00
20	1 - 1-1/8	10	RB	112	431	Super Champion	121111	28.64	10.12	6.00	20.72	2.00	2.75	3.72	4.00
20	1 - 1-1/8	12	BB	130	431	Super Champion	121175	30.65	12.25	6.00	21.78	2.00	2.75	3.72	4.00
20	1 - 1-1/8	12	RB	130	431	Super Champion	121193	30.65	12.25	6.00	21.78	2.00	2.75	3.72	4.00
20	1 - 1-1/8	14	BB	160	431	Super Champion	121255	33.00	14.00	6.00	23.25	2.00	2.75	3.72	4.00
20	1 - 1-1/8	14	RB	160	431	Super Champion	121273	33.00	14.00	6.00	23.25	2.00	2.75	3.72	4.00
25 tonnes															
25	1 - 1-1/4	8	BB	103	435	All Alloy High Capacity	208954	27.08	8.25	6.13	20.21	2.00	2.75	3.72	4.00
25	1 - 1-1/4	10	BB	117	435	All Alloy High Capacity	208965	29.33	10.24	6.13	21.46	2.00	2.75	3.72	4.00
25	1 - 1-1/4	18	BB	270	431	Super Champion	119495	41.36	18.25	7.13	29.12	2.00	3.12	3.50	4.81
25	1 - 1-1/4	18	RB	280	431	Super Champion	119496	41.36	18.25	7.13	29.12	2.00	3.12	3.50	4.81
30 tonnes															
30	1 - 1-1/4	12	BB	208	435	All Alloy High Capacity	208976	36.61	12.25	7.00	27.37	2.00	3.12	3.50	4.81
30	1 - 1-1/4	14	BB	230	435	All Alloy High Capacity	208977	38.86	14.25	7.00	28.62	2.00	3.12	3.50	4.81
30	1 - 1-1/4	20	BB	503	431	Super Champion	119589	52.40	20.25	8.31	38.34	2.50	3.94	5.62	7.06
30	1 - 1-1/4	20	RB	485	431	Super Champion	119598	52.40	20.25	8.31	38.34	2.50	3.94	5.62	7.06
30	1 - 1-1/4	24	BB	581	431	Super Champion	119605	56.00	24.25	8.31	40.00	2.50	3.94	5.62	7.06
30	1 - 1-1/4	24	RB	575	431	Super Champion	119614	56.00	24.25	8.31	40.00	2.50	3.94	5.62	7.06
60 tonnes															
60	1 - 1-1/4	12	BB	315	435	All Alloy High Capacity	8027291	41.65	12.12	8.66	33.19	2.06	2.40	5.75	6.12

* Ultimate Load is 4 times the Working Load Limit.

HOOK FITTING, SINGLE SHEAVE, 15-30t



- Opening feature permits easy insertion of rope without reeving, or while the block is suspended.
- Bolt for opening feature is retained, to ensure no lost bolts.
- Forged steel swivel tees, yokes and hooks.
- Furnished with a latch installed.
- Can be furnished with bronze bushings or roller bearings.
- Center pin equipped with pressure lube fitting.
- All sizes feature sheave grooves suited for a range of wire line diameters.
- Meets or exceeds all requirements of ASME B30.26 including identification

- ductility, design factor, proof load and temperature requirements. Importantly, these blocks meet other critical performance requirements including fatigue life and material traceability, not addressed by ASME B30.26.
- All blocks are RFID EQUIPPED.
- "All Alloy" snatch blocks feature a significant reduction in weight compared to snatch blocks made of non-alloy materials.
- Crosby's Engineered Solutions Group is ready to discuss your requirements and help select or develop the ideal block for your application. Call us at 1-800-777-1555.

Working Load Limit (t)*	Wire Rope Size (in)	Sheave Diameter (in)	Bearing Code	Weight Each (lb)	Catalog No.	Description	Stock No.	Dimensions (in)							
								A	B	C	D	E	F	G	H
15 tonnes															
15	3/4 - 7/8	8	BB	51	420	Champion	108275	23.50	8.12	5.09	8.34	1.76	16.51	1.50	2.93
15	3/4 - 7/8	8	RB	51	420	Champion	108276	23.50	8.12	5.09	8.34	1.76	16.51	1.50	2.93
15	3/4 - 7/8	10	BB	63	420	Champion	108371	25.25	10.12	5.09	8.34	1.76	17.26	1.50	2.93
15	3/4 - 7/8	10	RB	63	420	Champion	108372	25.25	10.12	5.09	8.34	1.76	17.26	1.50	2.93
15	3/4 - 7/8	16	BB	130	418	Light Champion	108608	32.25	16.12	5.09	8.34	1.76	21.26	1.50	2.93
15	3/4 - 7/8	16	RB	130	418	Light Champion	108626	32.25	16.12	5.09	8.34	1.76	21.26	1.50	2.93
15	7/8 - 1	18	BB	150	418	Light Champion	108644	33.50	18.12	5.09	8.34	1.76	21.51	1.50	2.93
15	7/8 - 1	18	RB	150	418	Light Champion	108662	33.50	18.12	5.09	8.34	1.76	21.51	1.50	2.93
20 tonnes															
20	1 - 1-1/8	8	BB	75	430	Super Champion	120023	25.87	8.12	6.00	9.39	2.00	18.43	1.50	3.38
20	1 - 1-1/8	8	RB	75	430	Super Champion	120041	25.87	8.12	6.00	9.39	2.00	18.43	1.50	3.38
20	1 - 1-1/8	10	BB	89	430	Super Champion	120096	27.94	10.12	6.00	9.39	2.00	19.50	1.50	3.38
20	1 - 1-1/8	10	RB	89	430	Super Champion	120112	27.94	10.12	6.00	9.39	2.00	19.50	1.50	3.38
20	1 - 1-1/8	12	BB	103	430	Super Champion	120176	30.00	12.25	6.00	9.39	2.00	20.50	1.50	3.38
20	1 - 1-1/8	12	RB	103	430	Super Champion	120194	30.00	12.25	6.00	9.39	2.00	20.50	1.50	3.38
20	1 - 1-1/8	14	BB	123	430	Super Champion	120256	32.34	14.00	6.00	9.39	2.00	21.96	1.50	3.38
20	1 - 1-1/8	14	RB	123	430	Super Champion	120274	32.34	14.00	6.00	9.39	2.00	21.96	1.50	3.38
25 tonnes															
25	1 - 1-1/4	8	BB	90	434	All Alloy High Capacity	208896	26.56	8.25	6.13	9.36	2.00	19.06	1.50	3.38
25	1 - 1-1/4	10	BB	107	434	All Alloy High Capacity	208910	28.63	10.25	6.13	9.36	2.00	20.13	1.50	3.38
25	1 - 1-1/4	18	BB	240	430	Super Champion	119486	41.41	18.25	7.12	11.76	2.50	27.97	1.94	4.32
25	1 - 1-1/4	18	RB	240	430	Super Champion	119487	41.41	18.25	7.12	11.76	2.50	27.97	1.94	4.32
30 tonnes															
30	1 - 1-1/4	12	BB	165	434	All Alloy High Capacity	208931	36.32	12.25	7.00	11.76	2.50	25.88	1.94	4.32
30	1 - 1-1/4	14	BB	180	434	All Alloy High Capacity	208932	38.57	14.25	7.00	11.76	2.50	27.13	1.94	4.32
30	1 - 1-1/4	20	BB	375	430	Super Champion	119507	52.15	20.25	8.31	15.24	3.00	36.12	2.25	5.91
30	1 - 1-1/4	20	RB	375	430	Super Champion	119516	52.15	20.25	8.31	15.24	3.00	36.12	2.25	5.91
30	1 - 1-1/4	24	BB	450	430	Super Champion	119525	55.75	24.25	8.31	15.24	3.00	37.75	2.25	5.91
30	1 - 1-1/4	24	RB	450	430	Super Champion	119534	55.75	24.25	8.31	15.24	3.00	37.75	2.25	5.91

* Ultimate Load is 4 times the Working Load Limit.