

IMPORTANT: TO ENSURE PROPER USE AND THE EXTENDED LIFE OF THIS PRODUCT:

1. READ ALL INSTRUCTIONS BEFORE USING THIS PRODUCT.
2. MOUNT AND PRACTICE USING YOUR LIGHT PRIOR TO FLIGHT! Use only after training from a qualified instructor.
4. Please note: this product is NOT intended to be the sole source of lighting in an aircraft cockpit.
5. Do not substitute any other power source—use of a higher voltage, such as 9 volt, will DESTROY the unit and void the warranty.
6. Disconnect batteries when not in use for extended periods of time (14 days) to prevent corrosion and to prolong battery life. FLITELite is not responsible for damage due to corrosion.
7. Check lighting angle and settings prior to flight to prevent distractions from glare and reflections.
8. Note that the light timing feature is approximate and may vary.
9. Do not use if any malfunction occurs. Disconnect batteries immediately.

One Year Limited Warranty

FLITELite warrants for 12 months after purchase that its product will be free from defects in material and workmanship. At its sole discretion, FLITELite will either repair or replace at no charge (except shipping), any product or part (with the exception of the battery) which is found to be defective under normal use. FLITELite's obligation to either repair or replace shall be the purchaser's sole remedy under this warranty. The warranty does not cover battery leakage. The battery manufacturer should be contacted in the event of a battery leak.

The warranty only extends to the original owner. There are no warranties, express or implied, other than as set forth on this page and FLITELite disclaims any warranties of merchantability or fitness for a particular purpose. FLITELite shall not be liable for incidental, consequential or special damages arising out of or in connection with product use or performance.

For service or repair, please call or e-mail customer service (service@flitelite.com) for an RMA#. Upon authorization, send postpaid and include the following:

1. The RMA number
2. A copy of the sales receipt
3. A description of the problem
4. Return mailing and contact information

Send to: **FLITELite Service Dept. • Momentum Interactive LTD**
1201 Birch Falls Drive • Bellingham, WA 98229
(877) 579.8853 • www.flitelite.com

FLITELite® is a hands-free, high intensity light source that snaps on to your headset or helmet mic. Touch the SoftTouch™ switch to control intensity, change LED color, and to turn it on or off—or simply wait, FLITELite will auto-off in 10 minutes.

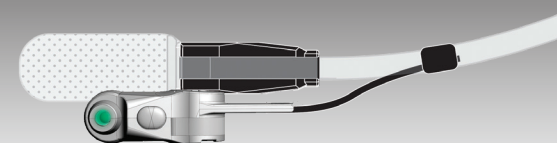
FLITELite is a highly efficient next generation LED system with advanced microcomputer technology—a quality product of Momentum Interactive—part of a world-class engineering team including NASA SATOP, Master CFIs and XL Synergy.

OUTSTANDING GEN II FEATURES INCLUDE:

- Instant, LiteTouch™ sensitive, hands-free operation
- Convenient, fully controllable variable intensity spot lighting
- Ten minute auto shut off feature
- Ultra-lightweight, easy to install, custom headset mic fittings
- Failsafe, built-in BIT Preflight Test system
- LiteRecall™ feature—remembers your last light intensity setting
- Dependable, high efficiency battery life—Over 12,000 activations
- Low battery indicator
- One Year Limited Warranty



FLITELite® Microlight Lip Light



OPERATOR'S MANUAL

**IMPORTANT:
READ ALL INSTRUCTIONS
BEFORE USING**



©Momentum Interactive.

™FLITELite is a registered trademark of Momentum Interactive. All rights reserved.

FLITELite® Microlight Directions for Mounting—

1. Remove the plastic battery protection tab to activate light.
2. Mounting adapters vary from model to model. Helmet adapters that require microphone removal include special instructions with the adapter.
2. Place the microphone adapter on the microphone boom and slide it to end of the microphone pushing it tightly up against the microphone —see *Figure 1*.
3. Insert the light component into microphone adapter until tabs click—see *Figure 2 and 3*.
4. To detach the light housing, reverse the instructions, leaving the Velcro in place.

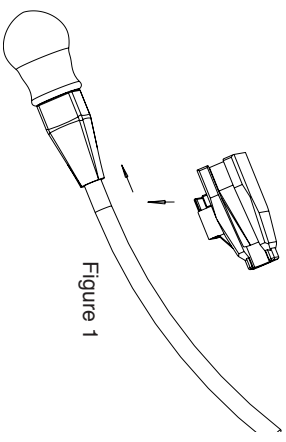


Figure 1

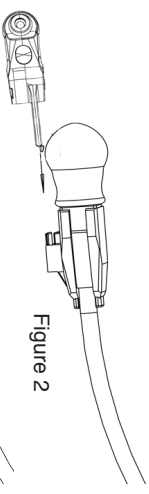


Figure 2

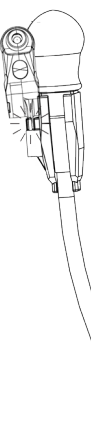


Figure 3

Operation —

1. Remove the plastic battery protection tab to activate light.
2. Touch the switch one time to activate the LEDs.
3. Touch and hold the switch to adjust the brightness. The light will revert to low bright, and slowly increase brightness to maximum until the finger is removed. The light will “remember” the last selected brightness setting. Removal of the batteries will reset to default brightness.
4. Touch the switch one time to shut the light off. (*Note: A slight delay between activations is normal.*)
5. The light will automatically shut off in approximately ten minutes and must be reactivated for longer use.
6. Practice with your light prior to flight to perfect the activation, control, and position of the light.
7. The light will blink when it turns on to indicate low battery condition with approximately ten hours of battery life remaining.
8. Avoid storing the unit with sensors in contact with dense material to avoid false activation and draining battery power.

Maintenance—

1. The microlight should be kept clean with a cloth that is only slightly moistened with a gentle cleaning solution. Do not dip into or directly spray liquids of any kind on the unit.
2. FLITELite is not responsible for damage due to battery leakage.
3. Batteries should be replaced when the light blinks on activation to indicate low battery conditions.
4. The unit was designed to operate with three AG-10 1.5 volt batteries. Deviations from this requirement may damage the unit or diminish its performance.
5. To replace the batteries, open the rubber door from the non-switch side. Slide the batteries out and reinsert fresh batteries by them sliding in, then down. The polarity is marked on the top of the case. Close the door by placing the rubber door tab back into place.

