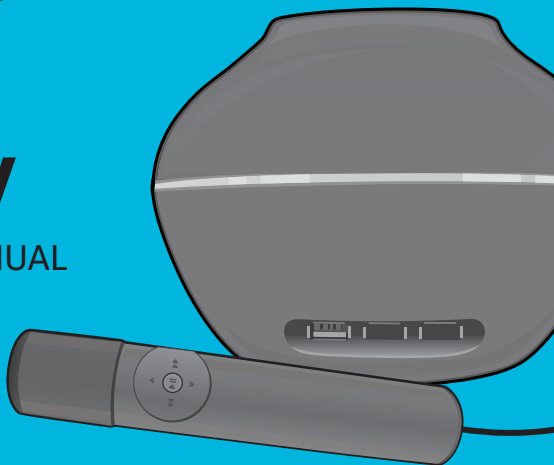




SMC4TV

INSTRUCTION MANUAL



www.singingmachine.com

Important Safety Information



CAUTION: TO REDUCE THE RISK OF ELECTRIC SHOCK, DO NOT REMOVE COVER (OR BACK). NO USER-SERVICEABLE PARTS INSIDE. REFER SERVICING TO QUALIFIED SERVICE PERSONNEL.
The Caution marking is located on the bottom panel.



DANGEROUS VOLTAGE: The lightning flash with arrowhead symbol within an equilateral triangle is intended to alert the user to the presence of uninsulated dangerous voltage within the product's enclosure that may be of sufficient magnitude to constitute a risk of electric shock to persons.



ATTENTION: The exclamation point within an equilateral triangle is intended to alert the user to the presence of important operating and maintenance (servicing) instructions in the literature accompanying this product.

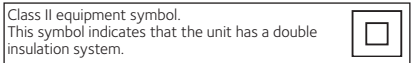


DANGER: This symbol is intended to alert the user to the risk of exposure to invisible and hazardous laser radiation if the cover or back is opened, the interlock fails or is defeated. Direct exposure to the beam may damage your eyesight.

DIPPING WARNING: This product shall not be exposed to dripping or splashing, and no objects filled with liquids, such as vases, shall be placed on the product.

VENTILATION WARNING: The normal ventilation of the product shall not be impeded for intended use.

SAFETY VERIFICATION: This device is made and tested to meet safety standards of the FCC, requirements and compliance with safety performance of the U.S. Department of Health and Human Services and also with FDA Radiation Performance Standards 21 CFR Subchapter.



This Class B digital apparatus complies with Canadian ICES-003.

CAUTION: TO PREVENT ELECTRIC SHOCK, MATCH WIDE BLADE OF PLUG TO WIDE SLOT AND FULLY INSERT.

WARNING: TO PREVENT FIRE OR SHOCK HAZARD, DO NOT EXPOSE THIS UNIT TO RAIN OR MOISTURE.

FCC WARNING: This equipment may generate or use radio frequency energy. Changes or modifications to this equipment may cause harmful interference unless the modifications are expressly approved in the instruction manual. The user could lose the authority to operate this equipment if an unauthorized change or modification is made.

This device complies with part 15 of the FCC Rules. Operation is subject to the following two conditions: (1) This device may not cause harmful interference, and (2) this device must accept any interference received, including interference that may cause undesired operation.

NOTE: This equipment has been tested and found to comply with the limits for a Class B digital device, pursuant to part 15 of the FCC Rules. These limits are designed to provide reasonable protection against harmful interference in a residential installation. This equipment generates, uses and can radiate radio frequency energy and, if not installed and used in accordance with the instructions, may cause harmful interference to radio communications. However, there is no guarantee that interference will not occur in a particular installation. If this equipment does cause harmful interference to radio or television reception, which can be determined by turning the equipment off and on, the user is encouraged to try to correct the interference by one or more of the following measures:

- Reorient or relocate the receiving antenna.
- Increase the separation between the equipment and receiver.
- Connect the equipment into an outlet on a circuit different from that to which the receiver is connected.
- Consult the dealer or an experienced radio/TV technician for help.
- The rating information is located at the bottom of the unit.

LASER SAFETY: This unit employs a laser. Only qualified service personnel should attempt to service this device due to possible eye injury. **CAUTION:** USE OF CONTROLS, ADJUSTMENTS OR PERFORMANCE PROCEDURE HEREIN MAY RESULT IN HAZARDOUS RADIATION EXPOSURE.

Important Safety Information

1. Read these Instructions.
2. Keep these Instructions.
3. Heed all Warnings.
4. Follow all Instructions.
5. Do not use this apparatus near water.
6. Clean only with a dry cloth.
7. Do not block any of the ventilation openings. Install in accordance with the Manufacturer's instructions.
8. Do not install near any heat sources such as radiators, heat registers, stoves, or other apparatus (including amplifiers) that produce heat.
9. Do not defeat the safety purpose of the polarized or grounding-type plug. A polarized plug has two blades with one wider than the other. A grounding type plug has two blades and a third grounding prong. The wide blade or the third prong are provided for your safety. When the provided plug does not fit into your outlet, consult an electrician for replacement of the obsolete outlet.
10. Protect the power cord from being walked on or pinched particularly at plugs, convenience receptacles, and the point where they exit from the apparatus.
11. Only use attachments/accessories specified by the manufacturer.
12. Use only with a cart, stand, tripod, bracket, or table specified by the manufacturer, or sold with the apparatus. When a cart is used, use caution when moving the cart/apparatus combination to avoid injury from tip-over.
13. Unplug this apparatus during lightning storms or when unused for long periods of time.
14. Refer all servicing to qualified service personnel. Servicing is required when the apparatus has been damaged in any way, such as power-supply cord or plug is damaged, liquid has been spilled or objects have fallen into the apparatus, the apparatus has been exposed to rain or moisture, does not operate normally, or has been dropped.
15. **WARNING:** To reduce the risk of fire or electric shock, do not expose this apparatus to rain or moisture. Do not place objects filled with water, such as a vase, on the apparatus.
16. The AC mains plug is used as the power disconnect device and it should remain readily accessible and operable during intended use. In order to completely disconnect the apparatus from power, the mains plug should be completely removed from the AC outlet socket.
17. **CAUTION:** To reduce the risk of fire or explosion, do not expose batteries to excessive heat such as sunshine, fire or other heat sources.

PORTABLE CART WARNING
(symbol provided by RETAC)

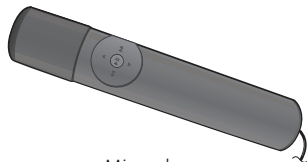


Included

Please make sure the following items are included.



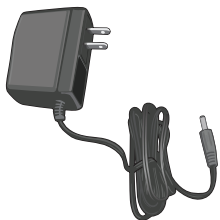
SMC4TV



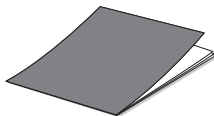
Microphone



Audio/Video Cable

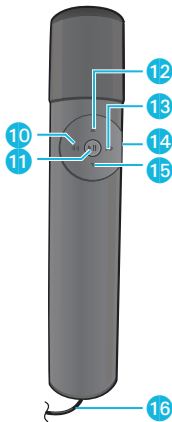
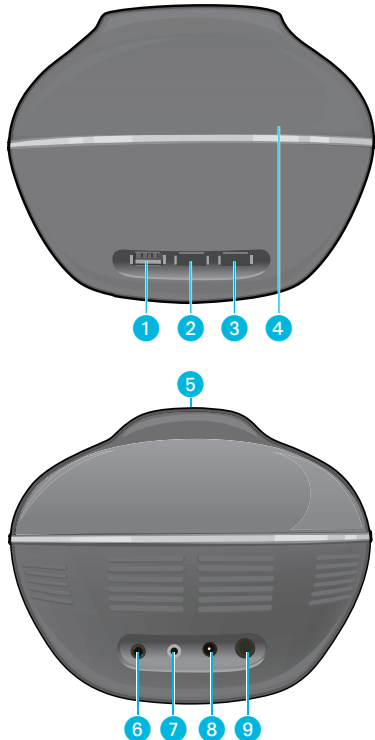


AC Adapter



Manual

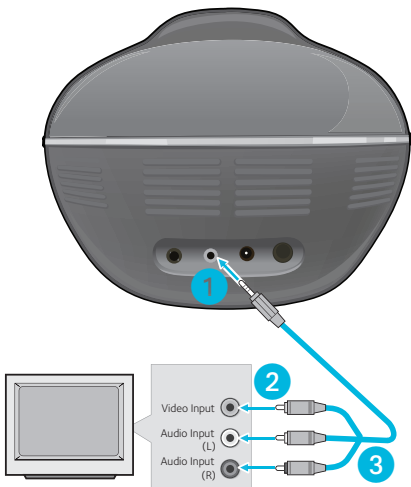
Location of Controls



1. USB Jack
2. MIC 1 Jack
3. MIC 2 Jack
4. CD Compartment
5. Speaker
6. AUX IN Jack
7. AV Jack
8. POWER IN Jack
9. ON/OFF Button
10. Skip Back ◀◀/-10 Track Button
11. Play/Pause ▶▶ / Stop Button
12. Navigation/Volume Up ▲ Button
13. Skip Forward ▶▶/+10 Track Button
14. MENU/Mic On-Off Button
15. Navigation/Volume Down ▼ Button
16. Mic Cable

Installation

Connecting The Unit



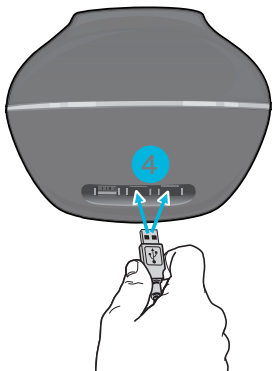
- 1 Connect the single end of the Audio/ Video cable to the AV jack on this unit.
- 2 Connect the Audio/ Video cable's yellow plug to the yellow Video In jack on the TV.
- 3 Connect the Audio/ Video cable's red and white plugs to the red and white Audio In jacks on the TV.
If left unconnected, the audio will just play through the 4TV's speakers.

Notes:

- This unit can be used with or without a TV, but TV connection is recommended.
- To see the lyrics on the TV, you must use a CD+G disc or MP3+G.
- Also refer to the TV's User Guide.
- If you have a mono TV with only one Audio In jack, you may have to purchase a "Y" adapter (stereo to mono) at your local electronics accessories store.

Installation

Connecting The Unit



4 Connect the USB Microphone's plug to the Mic1 or Mic2 jack.

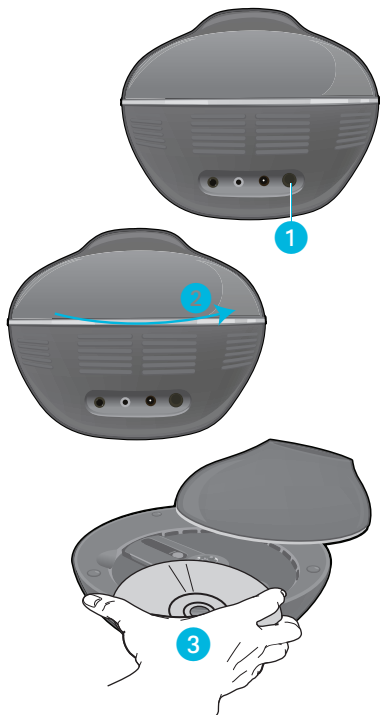
5 Insert the small end of the AC adapter into the POWER IN jack on the rear of the unit. Insert the other end (with the 2 blades) into a conveniently located AC outlet having 110-240V AC, 50/60Hz.

Notes:

- Make all connections before connecting to AC power.
- Do not touch the AC adapter with wet hands.
- Do not use with any other AC adapter.
- Do not drop or tap the mic as damage to the mic or speakers may occur. Do not spin the microphone around for the same reason.
- You can also connect this unit's audio cable to a stereo; see the audio equipment's User Guide.

Operation

Playing a CD or CD+G



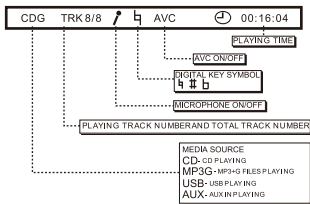
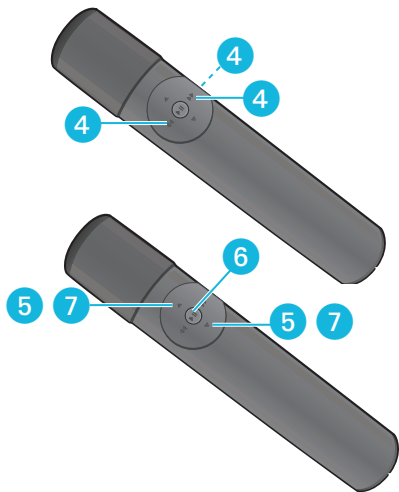
- 1 Connect the unit as described previously. Press the ON/OFF button to the In (ON) position to turn the unit on.
- 2 Rotate the top of the unit counter-clockwise to expose the CD compartment.
- 3 Insert a CD (with standard or MP3+G files) or a CD+G by gently pressing it on the center spindle. Standard or single discs can be used. Close the top.

FAQs

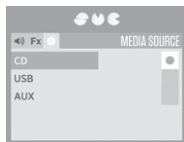
- **What is a CD+G?**
A CD+G (CD+ Graphics), is the standard format for most karaoke discs that will show the words on the screen.
- **What is an MP3+G?**
MP3+G is the newest format for karaoke music utilizing the MP3's small file size. It will show the words on the screen. There are over 12,000 downloads available at singingmachine.com
- **Do the buttons on the remote work with regular CDs, too?**
Yes, they work with both discs.

Operation

Playing a CD or CD+G



- 4 Press the MENU/Mic On-Off button; the Menu will appear. Select the Media Source option using the Skip Forward **▶▶**/Skip Back **◀◀** buttons.



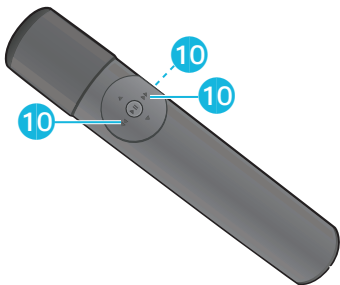
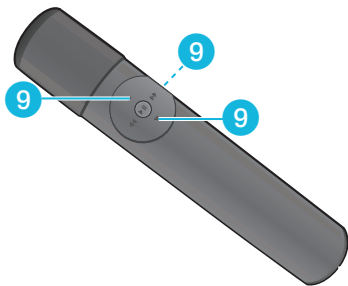
- 5 Select CD using the Navigation **▼** / **▲** buttons.
- 6 Press the Play/Pause **▶||** / Stop button; playback will begin automatically.
- 7 Adjust the volume on the 4TV using the Navigation/ Volume Up **▲** / Down **▼** button.

Notes:

- You can also adjust the 4TV's volume in the Volume menu.
- Never place anything other than a CD in the compartment as foreign objects can damage the unit.
- If no disc is inserted, "NO DISC" will appear on the screen.

Operation

Playing a CD or CD+G




8 Adjust the volume of the TV using its own volume control.

9 To set the Mic Volume, press the MENU/Mic On-Off button; the Menu will appear. Select MIC VOLUME using the Navigation ∇ / \blacktriangle buttons.



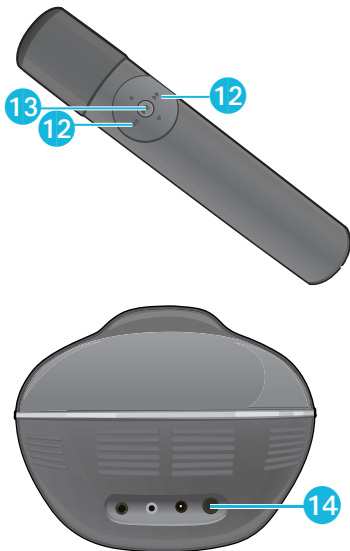
10 Set the Mic's Volume using the Skip Forward \blacktriangleright /Skip Back \blacktriangleleft buttons, then press the MENU/Mic On-Off button to close the menu.

Notes:

- The Volume Up/ Down buttons on the microphone only control the volume on the unit, not the TV.
- The Mic icon  will appear when the mic is on. To turn the mic on or off, press and hold the MENU/Mic On-Off button until the mic icon appears or has an "X" over it.

Operation

Playing a CD or CD+G



Sing or speak into the microphone and have fun!

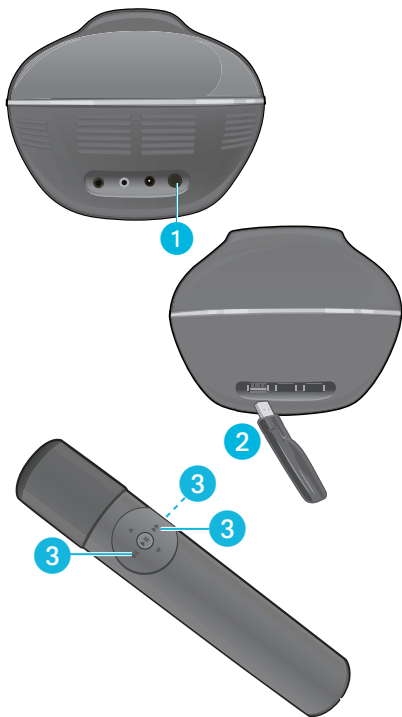
- 11 Set the Effects as shown on page 18.
- 12 **SKIP:** Advance or go back one track by pressing the Skip Back \ll / -10 Track/Skip Forward \gg / +10 Track button.
- 13 Press and hold the Play/ Pause $\blacktriangleright \parallel$ / Stop button to stop playback.
- 14 Press the ON/OFF button on the main unit to the Out (OFF) position to turn the unit off.

Notes:

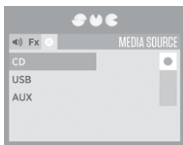
- **To Pause:** During playback, if you wish to pause the disc momentarily, press the Play/ Pause $\blacktriangleright \parallel$ / Stop button; "PAUSE" will appear on the screen. Press again to resume normal playback.
- Pausing the unit while playing a CD+G may distort the lyrics on the screen. This will remain until the screen is refreshed.

Operation

Playing Files on a USB Drive



- 1 Connect the unit as described previously. Press the ON/OFF button to the In (ON) position to turn the unit on.
- 2 Insert a USB drive with MP3 and/or MP3+G files into the USB jack on the 4TV.
- 3 Press the MENU/Mic On-Off button; the Menu will appear. Select the Media Source option using the Skip Forward ►/Skip Back ◀ buttons.

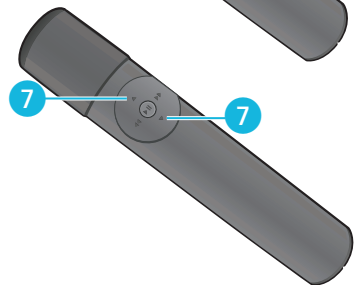
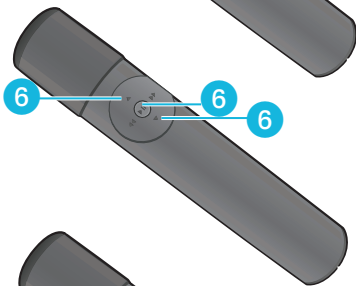
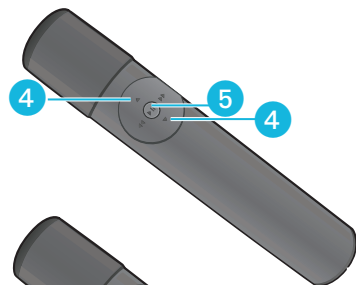


FAQs

- **What is an MP3+G?**
MP3+G is the newest format for karaoke music utilizing the MP3's small file size. It will show the words on the screen for singing along.
- **Do the buttons on the remote work with regular MP3s, too?**
Yes, they work with both formats.
- **Where can I get MP3+G files?**
See page 19 to order and download MP3+G files.

Operation

Playing Files on a USB Drive



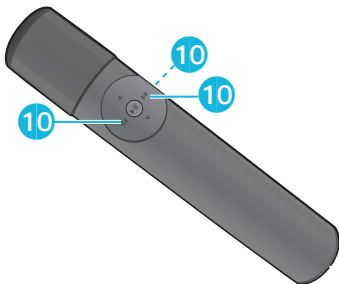
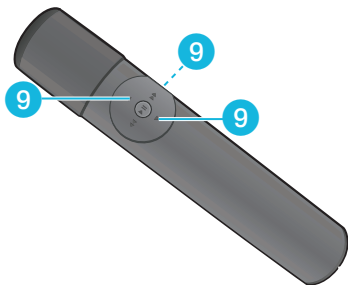
- 4 Select USB using the Navigation \blacktriangledown / \blacktriangle buttons.
- 5 Press the Play/Pause $\blacktriangleright \parallel$ / Stop button; the USB Menu will appear.
- 6 Select a desired file to play using the Navigation \blacktriangledown / \blacktriangle buttons. Press the Play/Pause $\blacktriangleright \parallel$ / Stop button to start playback.
- 7 Adjust the volume on the 4TV using the Navigation/ Volume Up \blacktriangle / Down \blacktriangledown button.

Notes:

- If there is more than one folder on the drive, press the Skip Back \blacktriangleleft / -10 Track button to highlight the left column, select the desired folder using the Navigation/ Volume Up \blacktriangle / Down \blacktriangledown button, then press the Play/Pause $\blacktriangleright \parallel$ / Stop button to confirm.
- Use the Skip Back \blacktriangleleft / -10 Track/Skip Forward \blacktriangleright / +10 Track buttons to go back and forth from the folder to the files.
- You can also adjust the 4TV's volume in the Volume menu.

Operation

Playing Files on a USB Drive



8

Adjust the volume of the TV using its own volume control.

9

To set the Mic Volume, press the MENU/Mic On-Off button; the Menu will appear. Select MIC VOLUME using the Navigation ∇/\blacktriangle buttons.




10

Set the Mic's Volume using the Skip Forward \blacktriangleright /Skip Back \blacktriangleleft buttons, then press the MENU/Mic On-Off button to close the menu.

11

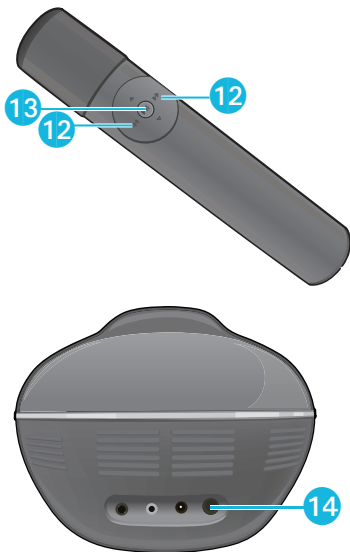
Set the Effects as shown on page 18.

Notes:

- The Volume Up/ Down buttons on the microphone only control the volume on the unit, not the TV.
- The Mic icon  will appear when the mic is on. To turn the mic on or off, press and hold the MENU/Mic On-Off button until the mic icon appears or has an "X" over it.

Operation

Playing Files on a USB Drive



Sing or speak into the microphone and have fun!

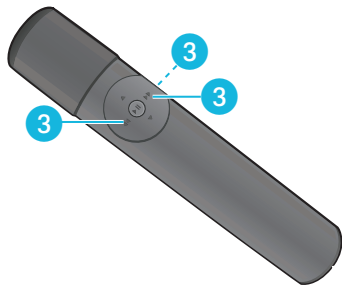
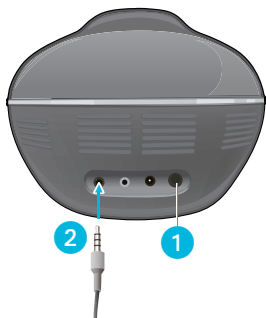
- 12** SKIP: Advance or go back one track by pressing the Skip Back \ll / -10 Track/Skip Forward \gg / +10 Track button. Advance or go back ten tracks by pressing **and holding** the Skip Back \ll / -10 Track/Skip Forward \gg / +10 Track button. See notes below.
- 13** Press and hold the Play/Pause || / Stop button to stop playback.
- 14** Press the ON/OFF button on the main unit to the Out (OFF) position to turn the unit off.

Notes:

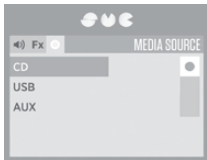
- When a Skip button is pressed, the USB screen will appear briefly, but you cannot select a file at that time. You must be in Stop mode to select files (see step 13).
- To Pause:** During playback, if you wish to pause playback momentarily, press the Play/Pause || / Stop button; "PAUSE" will appear on the screen. Press again to resume normal playback.
- Pausing the unit while playing an MP3+G may distort the lyrics on the screen. This will remain until the screen is refreshed.

Operation

Using the AUX Jack



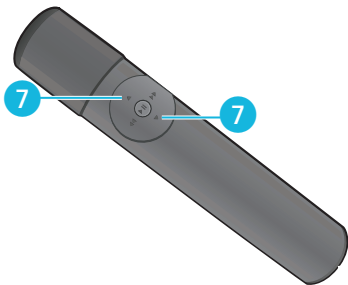
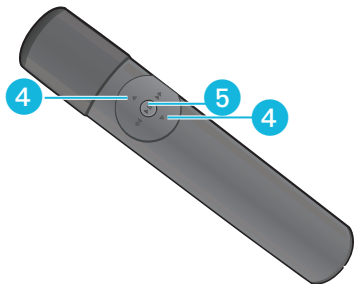
- 1 Connect the unit as described previously. Press the ON/OFF button to the In (ON) position to turn the unit on.
- 2 Insert one end of an audio cable (not included) into the AUX/LINE OUT jack on your external audio unit and the other end into the AUX IN jack on this unit.
- 3 Press the MENU/Mic On-Off button; the Menu will appear. Select the Media Source option using the Skip Forward ►/Skip Back ◀ buttons.



Note: You will not be able to view the lyrics on the screen when using an external audio source.

Operation

Using the AUX Jack



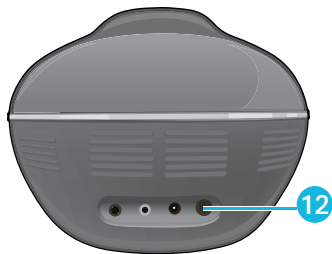
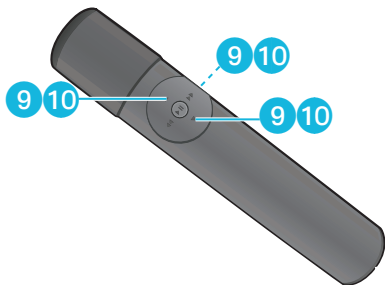
- 4 Select AUX using the Navigation ▼ / ▲ buttons.
- 5 Press the Play/Pause ▶ || / Stop button; the default SMC screen will appear.
- 6 Start playback of the external device.
- 7 Adjust the volume on the 4TV using the Navigation/Volume Up ▲ / Down ▼ button.
- 8 Adjust the volume of the TV using its own volume control.

Notes:

- It is highly recommended to set the volume on the auxiliary unit to 1/3 or lower to avoid distortion.
- Skipping files/tracks is not possible when using an external device.

Operation


Using the AUX Jack



Sing or speak into the microphone and have fun!

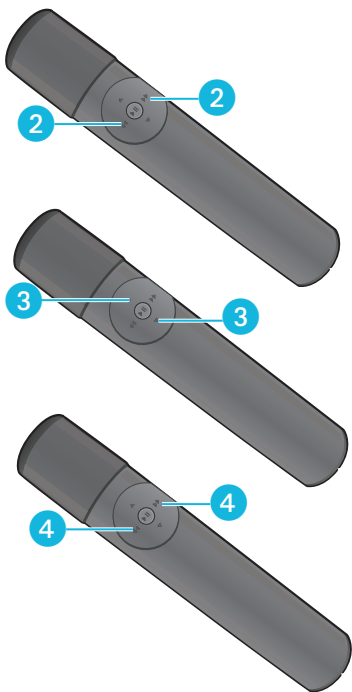
- 9 To set the Mic Volume, press the MENU/Mic On-Off button; the Menu will appear. Select MIC VOLUME using the Navigation ∇ / \blacktriangle buttons.
- 10 Set the Mic's Volume using the Skip Forward \blacktriangleright /Skip Back \blacktriangleleft buttons, then press the MENU/ Mic On-Off button to close the menu.
- 11 Set the Effects as shown on page 18.
- 12 Press the ON/OFF button on the main unit to the Out (OFF) position to turn the unit off.

Notes:

- The Volume Up/ Down buttons on the microphone only control the volume on the unit, not the TV.
- The Mic icon  will appear when the mic is on. To turn the mic on or off, press and hold the MENU/Mic On-Off button until the mic icon appears or has an "X" over it.

Operation

Karaoke Effects Menu



- 1 Insert and select a source (CD, USB Drive or AUX) as shown on the previous pages.
- 2 Press the MENU/Mic On-Off button; the Menu will appear. Select the FX option using the Skip Forward ►/Skip Back ◀ buttons.
- 3 Select a desired option using the Navigation ▼/ ▲ buttons.
- 4 Set the option using the Skip Forward ►/Skip Back ◀ buttons.

ECHO: Adjust for the echo effect. The more bars the greater the echo.

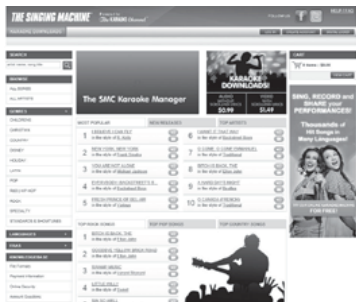
DIGI KEY: Adjust to change the singer's pitch.

AVC (Auto Voice Control): Set to ON and the vocals on a multiplex recording are muted as soon as the singer begins singing into the microphone. When the singer stops singing, the vocals are unmuted automatically. The file must have this feature. Set to OFF to disable.

Note: The Echo effect is the only option when using the AUX In function.

Operation

Where to Download MP3+G Files



To purchase and download karaoke music, please visit <http://store.singingmachine.com> to access over 12,000 of your favorite karaoke songs. You will need a USB flash drive (not included) to transfer the downloads to this unit.

Follow these easy steps:

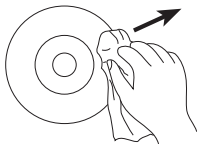
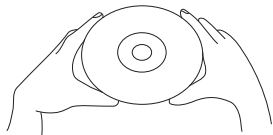
- 1 Go to <http://store.singingmachine.com> using your internet browser, and then register.
- 2 Select and purchase your favorite karaoke music from the Singing Machine Download Store.
- 3 Download your selected purchase(s) from the Singing Machine Digital Locker to your USB flash drive.
- 4 Insert the USB flash drive as shown on page 11 and enjoy!

FAQs

- Where can I get additional help with the file formats?
While on the Singing Machine Store's web page, simply click **FILE FORMATS** at the lower left.
- Can I Use this microphone with my computer?
Yes, this mic is compatible with Apple and PC, simply use with USB Mic compatible applications.

Note: Your downloaded songs can also be burned to a CD.

Care and Maintenance



Care for Compact Discs

Treat the compact disc carefully. Handle the compact disc only by its edges. Never allow your fingers to come in contact with the shiny, unprinted side of the compact disc.

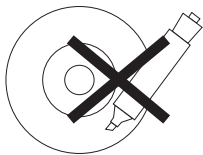
Do not attach adhesive tape, stickers, etc. to the compact disc label. Clean the compact disc periodically with a soft, lint-free, dry cloth. Never use detergents or abrasive cleaners to clean the compact disc. If necessary, use a CD cleaning kit.

If a disc skips or gets stuck on a section of the compact disc, it is probably dirty or damaged (scratched).

When cleaning the compact disc, wipe in straight lines from the center of the compact disc to the outer edge of the compact disc. Never wipe in circular motions.

This unit is designed to play only compact discs bearing the identification logos as shown here. Other discs may not conform to the CD standard and may not play properly.

Care and Maintenance



Compact Discs should be stored in their cases after each use to avoid damage. Do not expose compact discs to direct sunlight, high humidity, high temperatures or dust, etc. Prolonged exposure or extreme temperatures can warp the compact disc.

Do not stick anything on either side of the compact disc. Also do not write on the shiny side of the disc, as sharp writing instruments, or the ink, may damage the surface.



Cleaning the Unit

To prevent fire or shock hazard, disconnect your unit from the AC power source when cleaning. The finish on your unit may be cleaned with a dust cloth and cared for as other furniture. Use caution when cleaning and wiping the plastic parts.

Troubleshooting Guide

Should this unit exhibit a problem, check the following before seeking service:

No Power

- Power is not on; press the ON/OFF button turn power on.
- Make sure unit is connected to AC power.
- Make sure the AC plug is connected to this unit's POWER IN jack.

No Sound – General

- Volume is set to minimum; raise volume.
- Correct source was not selected in the Media menu.

No Sound – If connected to a TV

- Volume on the TV is muted or too low.
- White and Red audio plugs are not connected properly, see page 5.
- Correct source (usually AV) was not selected in the TV's menu.

Lyrics do not appear on the screen

- Yellow Video plug is not connected properly, see page 5.
- Correct source (usually AV) was not selected in the TV's menu.
- The file/track being played is not an MP3+G or CD+G file. These are the only files that allow you to view the lyrics on the screen.

CD section is not working properly

- No disc inserted, or disc inserted up side down; insert disc correctly.
- Disc is dirty or scratched; clean and try again, or replace disc.
- Non-standard disc is being used; make sure to use a standard CD with the CD or CDG logo.
- Lens is dirty; disconnect power and clean.
- Moisture has formed. Unplug and wait 20-30 minutes to dry.
- This unit needs to be reset. Unplug for 30 seconds and then plug in and try again.

Troubleshooting Guide

No sound from the microphone

- Make sure it is firmly connected to the MIC1 or MIC2 jack.
- Make sure it is turned on, see page 9 (Information column).
- Make sure the MIC VOLUME Menu option is not on the lowest setting.

File(s) on USB jack not playing

- The file is corrupted; replace file.
- The file is not in a format this unit will play.
- The connected USB device is not supported by the product.

Specifications

AUDIO

Output Power.....	5 Watts (RMS)
Output Impedance	8 Ohms

CD PLAYER

Frequency Response	100Hz - 20KHz
Signal to Noise Ratio.....	50dB
Sampling System	8 Times Oversampling
Disc Diameter	4.72" (120mm)
	3.15" (80mm) Single CD

JACKS

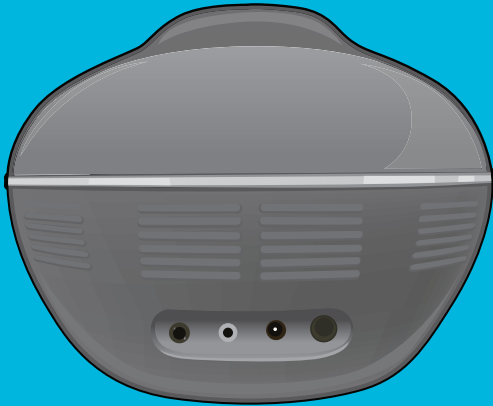
Headphone Jack	3.5mm Stereo Headphones
Microphone	-54db 600 Ohm Impedance with Dynamic Microphone

GENERAL

Power.....	DC 12V 1.5A, Positive Center AC Adapter
Dimensions	7.1 X 7.1 X 5.2 inches (18.0 x 18.0 x 13.3 cm)
Weight	2.86 lbs (1.3 kg)

Specifications are subject to change without notice.

The Singing Machine Company, Inc.
280 Machlin Court
City of Industry, CA 91789 USA



Visit Our Website: www.singingmachine.com

PRINTED IN CHINA