

**WARNING: FOR OUTDOOR USE ONLY**



**CODE AND SUPPLY REQUIREMENTS:** When an appliance is for connection to a fixed piping system, the installation must conform with local codes, or in the absence of local codes with the National Fuel Gas Code ANSI Z223.1/NFPA 54, OR International Fuel Gas Code.



**WARNING**

Do not store or use gasoline or other flammable vapors and liquids in the vicinity of this or any other appliance.

An LP-cylinder not connected for use shall not be stored in the vicinity of this or any other appliance.



**WARNING**

Improper installation, adjustment, alteration, service or maintenance can cause injury or property damage. Read the installation, operating and maintenance instructions thoroughly before installing or servicing this equipment.



**CAUTION**

**IF YOU SMELL GAS:**

1. Shut off gas to the appliance.
2. Extinguish any open flame.
3. If odor continues, keep away from the appliance and immediately call your gas supplier or fire department.



This appliance is designed as an "attended appliance". Adults must be present when the unit is operating. **DO NOT** leave this unit burning when unattended. If this product is left burning unattended it may cause damage or serious injury.



**PROPOSITION 65 WARNING**

**ATTN CALIFORNIA RESIDENTS:** This product includes parts that may contain materials known to the state of California to cause cancer, birth defects, or reproductive defects. For more information please visit [www.starfiredirect.com/prop-65](http://www.starfiredirect.com/prop-65).



**CAUTION:**

**CARBON MONOXIDE HAZARD**

This appliance can produce carbon monoxide which has no odor.

Using it in an enclosed space can kill you.

Never use this appliance in an enclosed space such as a camper, tent, car, or home.



**NOTE TO INSTALLER:** Owner's Manual must be left with the consumer for future reference.

**NOTE TO CONSUMER:** Owner's Manual must be saved for future reference.

# TABLE OF CONTENTS

Cover - Important Safety Information .....	1
Table of Contents .....	2
Important Safety Information	
Minimum Clearances to Combustibles .....	2
Important Safety Information .....	3
Pre-Installation & Preparation Guidelines .....	4
NG FIRE PIT AND BURNER INSTALLATION INSTRUCTIONS ... ..	5
PROPANE LP CONVERSION INSTALLATION INSTRUCTIONS .....	6
Operating Information	
Ignition Safety Information .....	77
Match Lit Operating Information .....	7
Maintenance and Care .....	8
Warranty .....	9

## IMPORTANT SAFETY INFORMATION

CAUTION: INSTALLATION, MODIFICATION AND REPAIR MUST BE DONE BY  
A QUALIFIED, PROFESSIONAL INSTALLER.

Be sure you understand all safety precautions and warnings contained in this manual.

1. CHECK STATE AND LOCAL CODES TO DETERMINE IF THE OUTDOOR FIRE PIT IS PERMITTED IN YOUR LOCALITY BEFORE INSTALLATION.
2. FOR OUTDOOR USE ONLY. THIS UNIT MUST BE INSTALLED AT LEAST 36" FROM PERIMETER OF FIRE PIT TO ANY COMBUSTIBLE WALLS, OR MATERIAL.
3. When shutting the unit down-be sure to TURN THE CONTROL VALVE FULLY OFF.
4. **WARNING: CARBON MONOXIDE POISONING MAY LEAD TO DEATH. DO NOT MODIFY THIS OUTDOOR FIRE PIT OR ITS CONTROLS, EXCEPT AS PROVIDED FOR IN THIS MANUAL.**  
Any other change may be dangerous. Improper installation or use of your Outdoor Fire Pit can cause serious injury or death from fire, burns, explosions or carbon monoxide poisoning.

## Clearances to Combustible Construction:

Sidewalls: 36" (1.5 m) from perimeter of unit (Figure 1)  
Ceiling: 80" (1.5 m from top of unit to ceiling or overhang)  
Flooring: 0" - Can be installed on deck, slab, floor, etc.

The dimensions shown in Figure 1 are **MINIMUM CLEARANCES** to maintain when you install this Outdoor Fire Pit. **THERE MUST BE AT LEAST 36" of clearance from the perimeter of the unit** to any combustible sidewalls, ceilings, or materials.

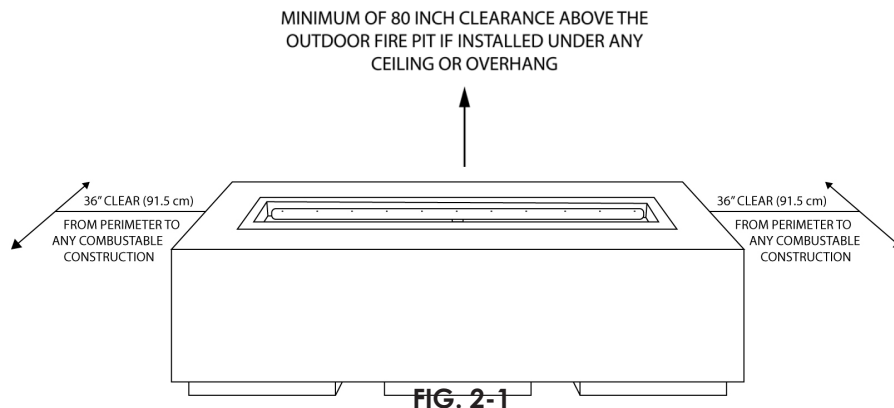


FIG. 2-1

## IMPORTANT SAFETY INFORMATION

- A. **YOUNG CHILDREN SHOULD BE CAREFULLY SUPERVISED WHEN THEY ARE IN THE AREA OF THIS APPLIANCE.**
- B. **DO NOT sit or place any part of the body or combustible materials on the Fire Pit surround. Children and adults should be alerted to the hazard of high surface temperatures and should stay away to avoid burns or clothing ignition.**
- C. Every time you use your Fire Pit make sure that the area around the Fire Pit is clear of flammable items such as gasoline, yard debris, wood, etc.
- D. **WARNING: HOT WHILE IN OPERATION AND FOLLOWING OPERATION.** Children must be carefully supervised when in the vicinity of this appliance. Serious injury may occur. **DO NOT** throw trash, paper, or other flammable materials onto your Fire Pit. **DO NOT** leave in operation when unattended. **WARNING: DO NOT operate this Fire Pit in the rain.**
- E. SOLID FUEL MUST NOT BE BURNED in the Fire Pit.
- F. **DO NOT** continue using if you smell unusual odors or have headaches, nausea or are dizzy.
- G. **DO NOT** store any combustible materials, gasoline, or any other flammable vapors/liquids around the area of your Fire Pit. Provide adequate clearance for servicing and operation.
- H. **DO NOT** hang or place clothing or any flammable material on or near your Fire Pit. Matches, paper, garbage, or any other material must not be thrown on top of the lava rock, fire glass, logs, or burner, or into the flame.
- I. **DO NOT** use this appliance if any part of it has been under water. Immediately call a qualified service technician to inspect the appliance and to replace any part of the control system and any gas control which has been under water.
- J. **Installation and repair should be done by a qualified service person.** Local certified installers can be found on <https://www.nficertified.org/>
- K. **The appliance should be inspected before use and at least annually by a qualified service person.** More frequent cleaning may be required as necessary. It is imperative that the control compartment, burners and circulating air passageways of the appliance be kept clean.
- L. The burner must be replaced prior to the appliance being put into operation if it is evident that the burner is damaged. Contact Starfire Direct at 866-578-8538 for a replacement burner.
- M. **DO NOT use this fire pit in high wind.** Wind may cause flame to lay over and to discolor the copper. Wind may also cause flame to extinguish. Your fire pit may not be equipped with an automatic gas shut off. In the event that your flame is extinguished, you must know how to manually shut off the gas to this appliance.

# PRE-INSTALLATION AND PREPERATION SAFETY GUIDELINES

- A. Before installing this Outdoor Fire Pit, check "Minimum Clearance to Combustibles" (Fig. 1 on page 2). **MINIMUM CLEARANCES** must be maintained when you install this Outdoor Fire Pit. **THERE MUST BE AT LEAST 36"** (91.5 cm) from the perimeter of the fire pit to any combustible sidewall, or material and **AT LEAST 80"** to ceiling.
- B. The Outdoor Fire Pit is for outdoor use only. **DO NOT** install or use this appliance inside a building, garage, or any other enclosed area including recreational vehicles and/or boats. **This unit must be installed in such a manner that proper air ventilation is maintained without obstruction at all times, and during all weather conditions.**
- C. **CHECK GAS TYPE** (natural gas or propane): The gas supply you intend to use must be the same as that intended for use with this fire pit. This fire pit comes setup for use with Natural Gas. If the gas supply is different, you **MUST have the Fire Pit converted to the gas type you intend to use**, by a qualified, professional installer with the included propane conversion kit. If you are unsure, contact your dealer for assistance.
- D. **DO NOT USE IF GAS PRESSURE IS LOWER THAN THE MINIMUM REQUIREMENT OR EXCEEDS THE MAXIMUM.**
- E. **FOR NATURAL GAS:** The minimum inlet gas supply pressure for purposes of input adjustment is 5 inches (127mm) water column and maximum inlet gas supply pressure is 10 inches (254 water column).  
**FOR PROPANE:** The minimum inlet gas supply pressure for purposes of input adjustment is 8 inches (203 mm) water column and the maximum inlet gas supply pressure is 13 inches (330 mm) water column.  
**DO NOT INSTALL THIS UNIT IF MINIMUM PRESSURE IS NOT AVAILABLE OR IF MAXIMUM PRESSURE IS EXCEEDED.**

The table below displays BTU ratings for the corresponding burner sizes and shapes. 'H'=H-Burner, 'L'=Linear Burner

BTU Rating	Burner Size & Shape
120,000	48" L8"L
165,000	36" HH
200,000	48" H" H

- F. Gas piping system must be sized to provide minimum inlet pressure at the maximum flow rate (BTU/hr). Undue pressure loss will occur if the pipe is too small or the run is too long.
- G. For installations at elevations above 2,000 ft., contact your local dealer or gas supplier before installing as input ratings will be reduced approximately 4% for each 1,000 ft. above sea level. Refer to the National Fuel Gas Code. **Contact the dealer for the required orifice.**
- H. If the Outdoor Fire Pit is connected to Natural Gas, its main gas valve must be disconnected from the gas supply piping system during any pressure testing of that system at test pressures in excess of 2 psi.
- I. If the Outdoor Fire Pit is connected to Natural Gas, it must be isolated from the gas supply piping system by closing its individual manual shut-off valve during any pressure testing of the gas supply piping system at test pressures equal to or less than 2 psi.
- J. **INSTALLER NOTE:** This unit should be installed so that it can be removed at a later date for service.
- K. **GAS SUPPLY PLUMBING REQUIREMENTS**  
Apply only joint compounds that are resistant to all gasses on all male pipe fittings. Make sure to tighten every joint securely. **Do not use pipe joint compound to connect flare fittings.**

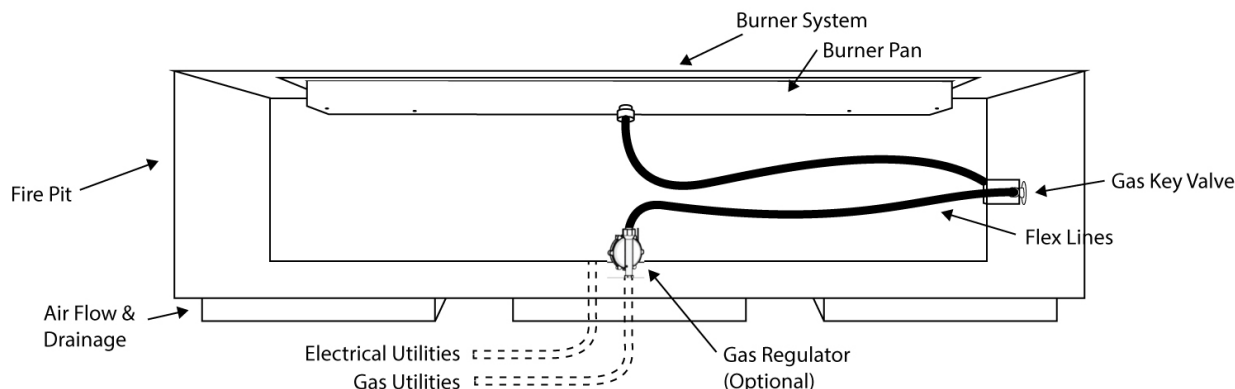


**SAFETY NOTICE:** An external on/off valve in the gas line is required for safety when your Outdoor Fire Pit is not in use. It also provides for convenient maintenance and repair.



# NG FIRE PIT AND BURNER INSTALLATION INSTRUCTIONS

**NOTE:** These instructions are only for Natural Gas installations. To convert your fire pit for use with propane, see page 6.



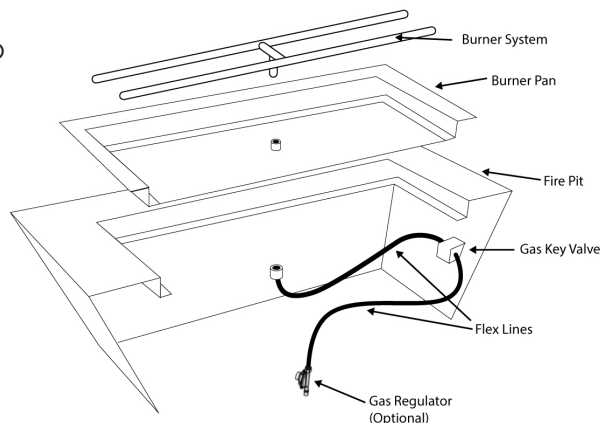
**FIG. 5-1**

1. Place **Fire Pit** over **Gas/Electrical Utilities**.
2. The flex lines attached to the **Gas Key Valve** have been pre-tightened. Using two adjustable wrenches, make sure they are nice and tight and did not loosen during shipping.
3. Remove the drop in burner from the box.
4. Both of the flexible gas lines will have a **FLR x FIP** fitting hand tightened at the end. Attach the Flex line with the yellow tape to the burner pan. Attach the other line to your gas supply.



**REMEMBER: Use "Pipe Joint Compound" or "Yellow Gas Tape" on all NPT fittings. NEVER USE ON COMPRESSION THREADS!**

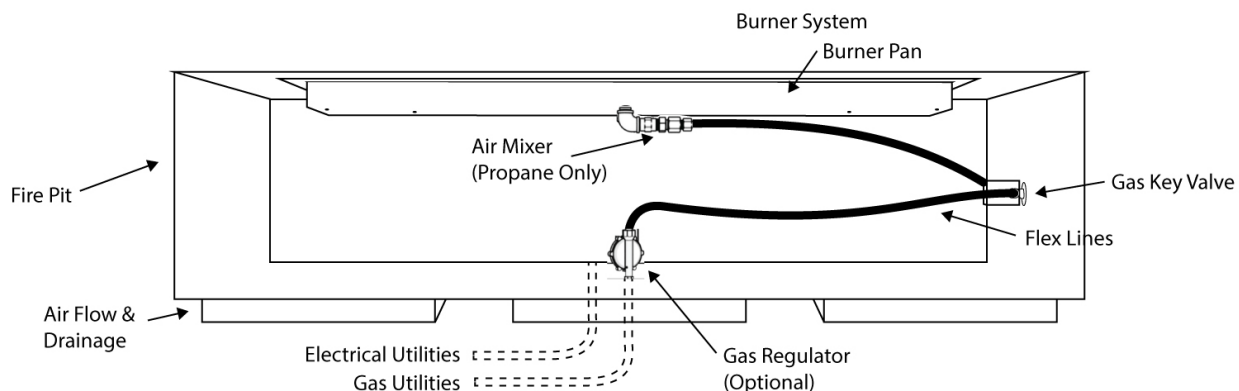
4. Using two adjustable wrenches, tighten the end of the first flexible gas line to the compression fitting on your **gas stub**.
5. Using two adjustable wrenches, tighten the end of the second flexible gas line (with yellow tape) to the compression fitting on the bottom side of the **Burner System**. Make sure all fittings are tight and secure, then set the **Burner System** into the **Fire Pit**.
6. Test your connections for leaks before first use. Use a soapy water solution.
7. Before placing lava rock in burner pan, light your burner to ensure proper ignition. For lighting instructions, see page 8.



**FIG. 5-2**

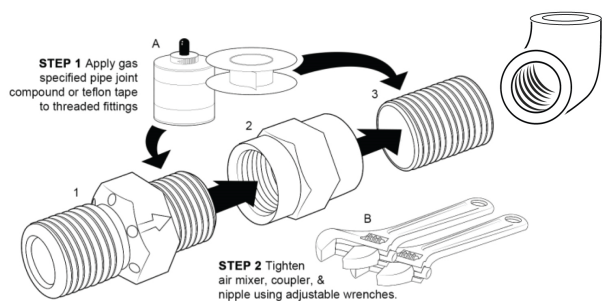
# PROPANE LP CONVERSION INSTALLATION INSTRUCTIONS

**NOTE:** These instructions are only for Propane Gas installations. Natural Gas installations refer to page 5.



**FIG. 6-1**

1. Place **Fire Pit** over **Gas/Electrical Utilities**. Remove the drop in burner from the box.
2. The flex lines attached to the **Gas Key Valve** have been pre-tightened. Untighten and disconnect the flexline from the elbow connected to the bottom of the pan.
3. Open the include PROPANE CONVERSION KIT bag. Assemble the supplied **propane air mixer**.



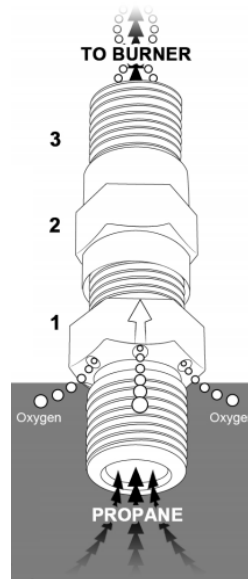
**FIG. 6-2**

## COMPLETED ASSEMBLY

Shown at right Fig. 6-3

**PLEASE NOTE:** This Air Mixer will not operate properly if installed incorrectly or does not have adequate air flow.

When installing your air mixer, ensure the gas is flowing in the proper direction indicated by arrow.



4. Install the propane air mixer **before** the 90 degree elbow on underside of burner pan. See Fig 6-1. Note directional arrow on propane air mixer to orient in the correct direction for supply.
5. Install the supplied **Flare x FIP** to the air mixer. Connect your the flex line.



**REMEMBER:** Use "Pipe Joint Compound" or "Yellow Gas Tape" on all NPT fittings.  
**NEVER USE ON COMPRESSION THREADS!**

# PROPANE LP CONVERSION INSTALLATION INSTRUCTIONS

4. The flex lines attached to the Gas Key Valve have been pre-tightened. Using two adjustable wrenches, make sure they are nice and tight and did not loosen during shipping.
5. Both of the flexible gas lines will have a FLR x FIP fitting hand tightened at the end. Attach the Flex line with the yellow tape to the propane air mixer on bottom of burner pan. Attach the other line to your gas supply.



**REMEMBER: Use “Pipe Joint Compound” or “Yellow Gas Tape” on all NPT fittings. NEVER USE ON COMPRESSION THREADS!**

8. Using two adjustable wrenches, tighten the end of the first flexible gas line to the compression fitting on your **gas stub**.
9. Using two adjustable wrenches, tighten the end of the second flexible gas line (with yellow tape) to the compression fitting on the bottom side of the **Burner System**. Make sure all fittings are tight and secure, then set the **Burner System** into the **Fire Pit**.
10. Test your connections for leaks before first use. Use a soapy water solution.
11. Before placing lava rock in burner pan, light your burner to ensure proper ignition. For lighting instructions, see page 8.

# IGNITION SAFETY INFORMATION

*We recommend that before you install your Fire Pit you familiarize yourself with the control valve layout. This will help you to be confident operating the Fire Pit when fully installed (see figures below for typical control positions).*

**FOR YOUR SAFETY, READ BEFORE LIGHTING**

## CAUTION



**IF YOU DO NOT FOLLOW THESE INSTRUCTIONS EXACTLY, A FIRE OR EXPLOSION MAY RESULT CAUSING PROPERTY DAMAGE, PERSONAL INJURY OR LOSS OF LIFE.**



### WARNING

**BEFORE LIGHTING**, smell all around the Outdoor Fire Pit area for gas. Be sure to smell next to the floor because some gas is heavier than air and will settle on the floor. **IF YOU SMELL GAS FOLLOW THE INSTRUCTIONS ON PAGE 1.**



### WARNING

**DO NOT** use this appliance if any part has been under water. Immediately call a qualified, professional service technician to inspect the Outdoor Fire Pit and to replace any part of the control system and any gas control that has been under water.

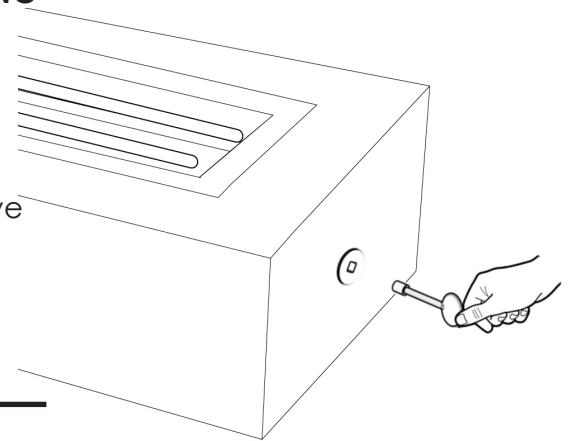
## OPERATING INSTRUCTIONS MANUAL MATCH LIT SYSTEMS ONLY



**READ IGNITION SAFETY INFORMATION BEFORE LIGHTING**

### IGNITING THE FIRE PIT

1. Enter the included valve key into the key valve opening
2. Using a long safety lighter, hold an open flame above the outside edge of the burner ring.
3. Slowly turn the valve key towards the "ON" position.
4. Once fire burner is lit, remove safety lighter and turn key valve up or down for desired flame height.



**FIG. 8-1**

### SHUTTING OFF THE FIRE PIT

1. To turn off, insert valve key into the key valve opening and rotate to the off position.

## CAUTION



**DO NOT** turn the main gas valve knob to the "ON" position **FOR 5 MINUTES** after shutting the unit off.

# MAINTENANCE AND CARE



## CAUTION:

**Always remove any debris from the burn area.**

Concrete is a porous material and can be susceptible to staining. The fire pit has a sealant put into the concrete mix during manufacturing that can help protect against marks and minor stains.

With this sealant, your concrete will look great and natural for many occasions. Prolonged contact with overly acidic, heavily pigmented or alkali substances should be avoided. We recommend cleaning any spills as quickly as possible. We recommend that you avoid cutting or using hot pans directly on your table.

We caution against use of caustic acids to clean or resurface concrete furniture. Such caustic acids have historically been used to clean pools, sidewalks or other porous, all concrete surfaces. These acids will etch the surface and change the structure of the concrete at the surface level.

Additionally, we caution against high-pressure cleaning, as with pressurized water or chemicals. Using a garden hose should be enough pressure to clean the concrete. For normal spills, a quick wipe up and gentle "scrub" with a cotton cloth or similar, should be enough to clean. For stains, which contain dark colors or have been sitting longer than a normal spill, you can use a mild soap.

Please also note that fissures can appear on the surface due to age and/or exposure to the atmospheric conditions. These commonly don't have an effect on durability. Do not compromise the structural integrity of tables by sitting or standing on them.

**Cover when not in use:** Starfire Direct recommends covering the fire pit when it is not in use, to protect surface finish and keep clean of debris. Starfire Direct manufactures custom covers for each fire pit model. You can contact Starfire Direct's sales team at 866-578-8538 to place an order for this additional accessory.



**CAUTION:** Allow fire pit to cool before covering.

**Professional Inspection.** This fire pit must be inspected by a qualified serviceman regularly to ensure that all gas connections are tight and check for any leaks, cracked hoses, or burner clogs. Frequency of inspections is dependent on usage.

## WARRANTY

Starfire Direct warrants this fire pit against manufacturing defects that prevent safe and correct operation of the product for a period of three years from the date of delivery.

Defective product may be required to ship back. If the product does not need to be shipped back, Starfire Direct is not responsible for removing or discarding original product. Contact Starfire Direct to obtain an RMA (Return Merchandise Authorization) for that specific product which states the nature of the defect or warranty claim. Product to be returned should be packed carefully - Starfire Direct is not responsible for damage on returned items. The original purchase information will be required. RMAs are only valid for 30 days from the date of issue and will not be processed if received after the expiration date. The RMA number must be indicated on the outside of the return package and a copy of the RMA in the package with product. Products shipped back without an RMA may be refused.

Our warranty does not cover items that have been damaged by over heating, modification, abuse, improper storage, installation, or maintenance. This warranty excludes claims for incidental or consequential damage and indirect-collateral expenses arising from product defects or warranty recovery. Starfire Direct is not responsible for damage incurred from use during high wind or excess heat; the full cost of repairs or exchanges for such scenarios are the financial responsibility of the owner. Starfire Direct is not responsible for the actions including negligence of the installer. Should the buyer decide to return a fire pit, Starfire Direct is not responsible for the cost of shipping.

Any costs incurred related to installation, repair or inspections by a contractor, installer or third party are the responsibility of the consumer.

**Starfire Direct is NOT responsible for local codes and/or if any of our products are not approved for installation. Please check with your local building department or governing agencies for proper approvals before purchasing. This product has not gone through third party testing and does not carry any certifications.**



*This page is intentionally left blank.*

