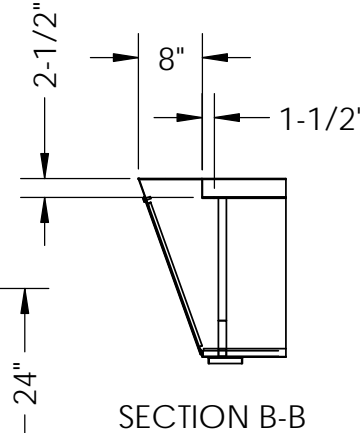
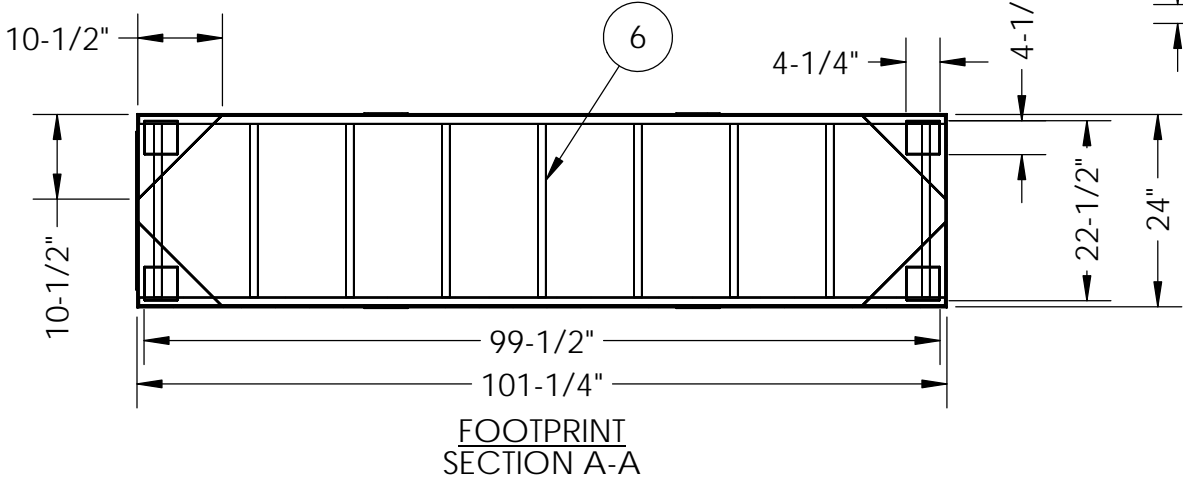
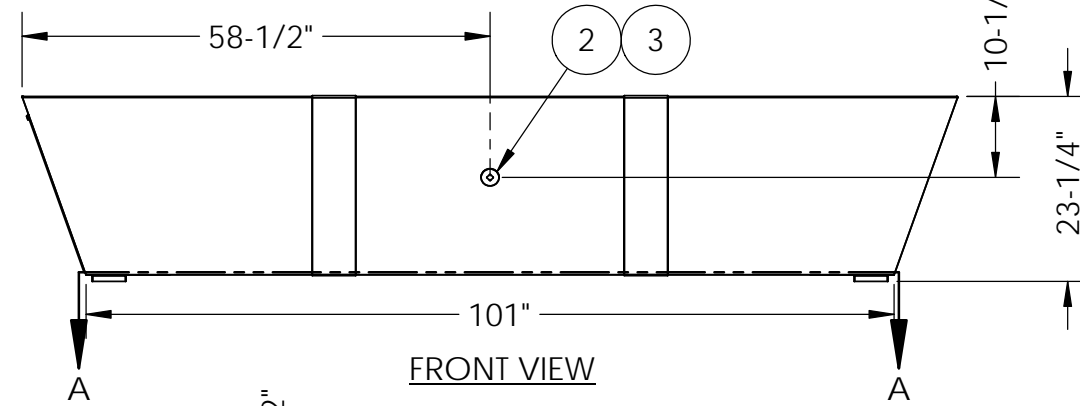
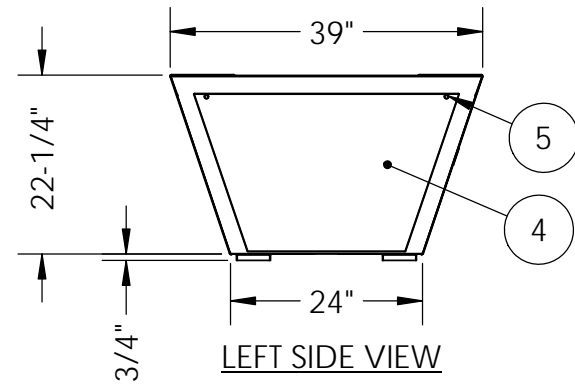
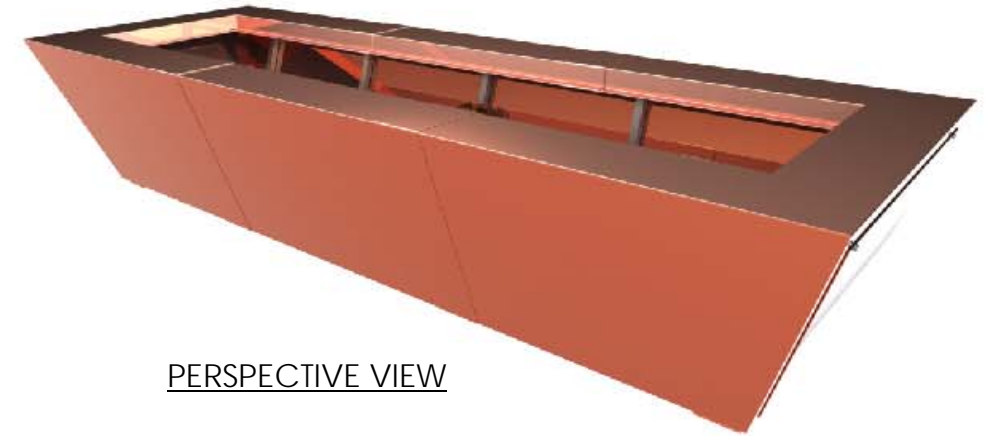
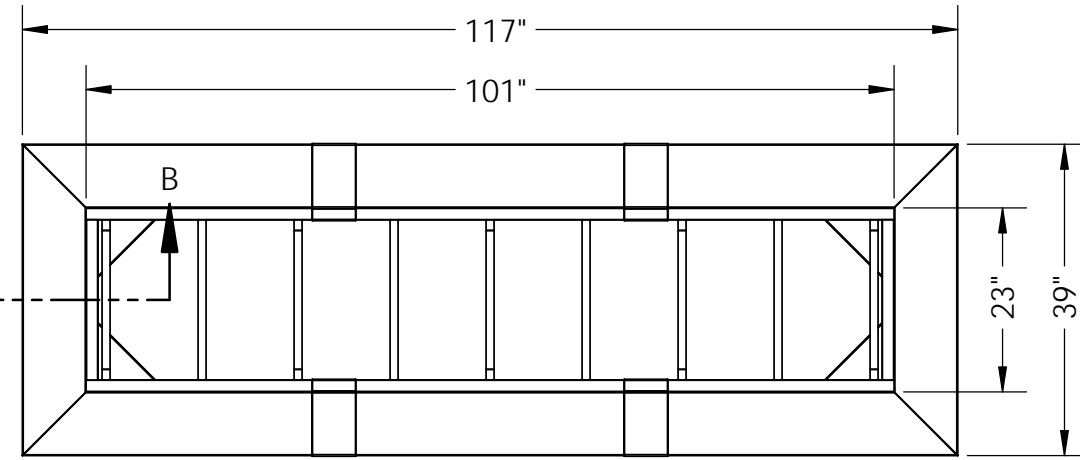
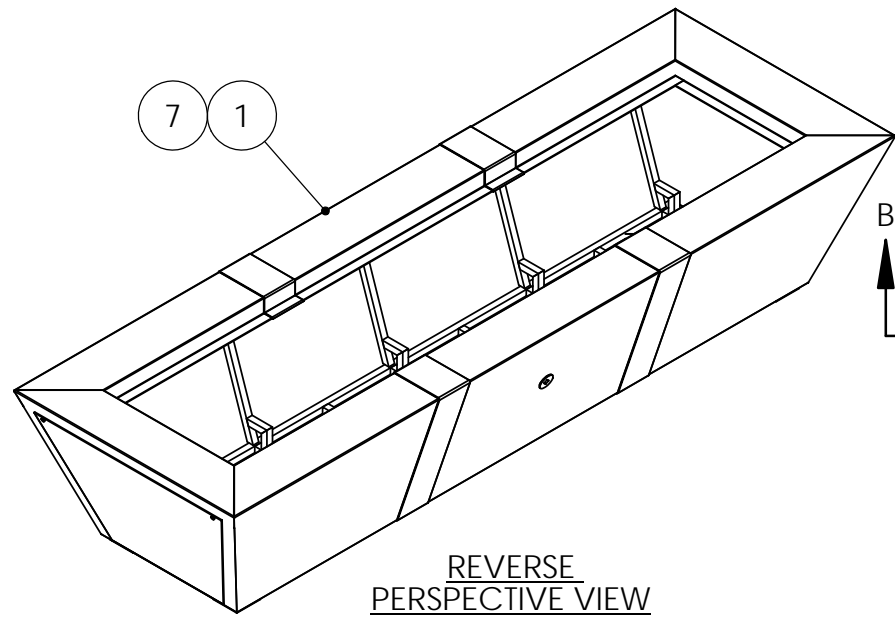


4

3

2

1



NOTES:

1. ALL DIMENSIONS ARE IN INCHES UNLESS OTHERWISE SPECIFIED.
2. MATERIAL: 20 OUNCE COPPER FINISHED WITH MACHINED HAMMER TEXTURE
3. UNIT WEIGHT: 300 LBS
4. IGNITION: ELECTRONIC IGNITION, MANUAL SPARK IGNITION, MATCH LIT IGNITION
5. SOME ITEMS ARE NOT SHOWN IN DRAWING VIEWS. SEE BILL OF MATERIALS FOR FULL PARTS LIST.

ITEM NO.	QTY.	PART NUMBER	DESCRIPTION
7	4	-	THREADED BALANCE FEET
6	-	-	STAINLESS STEEL WELDED SUB-FRAME
5	2	-	THUMB SCREW, 1/4"
4	1	FP-724022-COPCYN	REMOVABLE SIDE PANEL
3	1	-	STARFIRE DESIGNS 3" UNIVERSAL KEY & VALVE FLANGE COMBO, FINISH: ANTIQUE COPPER
2	1	-	STARFIRE DESIGNS 1/2" MANUAL STRAIGHT QUARTER TURN GAS KEY VALVE
1	2	FP-1204022-SPARTAN	FIRE PIT ENCLOSURE, COPPER SPARTAN

PROPRIETARY AND CONFIDENTIAL
 THE INFORMATION CONTAINED IN THIS DRAWING IS THE SOLE PROPERTY OF STARFIRE DIRECT. ANY REPRODUCTION IN PART OR AS A WHOLE WITHOUT THE WRITTEN PERMISSION OF STARFIRE DIRECT IS PROHIBITED.

UNLESS OTHERWISE SPECIFIED:		NAME	DATE	TITLE: COPPER SPARTAN FIRE PIT 120"X40"X22"
DIMENSIONS ARE IN INCHES		DRAWN		
TOLERANCES: FRACTIONAL ± 1/8" ANGULAR: MACH ± BEND ±		CHECKED		
TWO PLACE DECIMAL ± THREE PLACE DECIMAL ±		ENG APPR.		
INTERPRET GEOMETRIC TOLERANCING PER:		MFG APPR.		SIZE B DWG. NO. FP-1204022-SPARTAN REV A
MATERIAL		Q.A.		
FINISH				SCALE: 1:24 WEIGHT:
NEXT ASSY	USED ON			SHEET 1 OF 1
APPLICATION		DO NOT SCALE DRAWING		

4

3

2

1