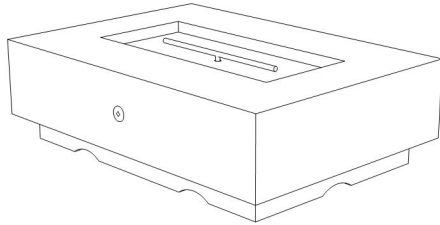
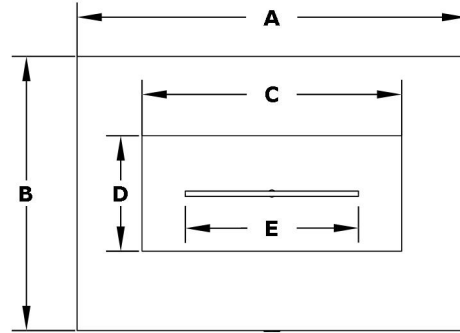


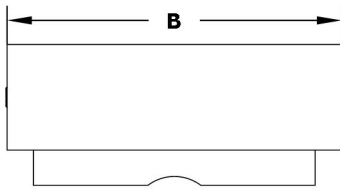
# CABO LINEAR FIRE PIT - GFRC



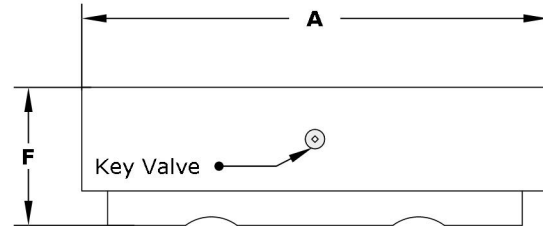
**ISOMETRIC VIEW**



**TOP VIEW**



**RIGHT SIDE VIEW**



**FRONT SIDE VIEW**

SKU	A	B	C	D	E	F	BTU
OPT-CBLN56	56"	38"	36"	16"	24"	16"	65,000
OPT-CBLN56EKIT	56"	38"	36"	16"	24"	16"	65,000
OPT-CBLN66	66"	38"	36"	16"	24"	16"	65,000
OPT-CBLN66EKIT	66"	38"	36"	16"	24"	16"	65,000
OPT-CBLN90	90"	38"	66"	16"	54"	16"	65,000
OPT-CBLN90EKIT	90"	38"	66"	16"	54"	16"	65,000

Includes: Fire Pit, Pan, Burner, Key Valve, Whistle Free Hoses, Black Lava Rock, 110V Plug and Play Electronic Ignition System (For Products ending with EKIT)

Fire Pit Material: GFRC Concrete  
 Finish: Wood Grain Concrete  
 Pan Material: 304 Stainless Steel  
 Burner Material: 304 Stainless Steel  
 Ignition Type: Match Lit or Electronic Ignition

Standard 1" Flange on all pans  
 Standard 2" Depth on all pans

**110V ELECTRONIC IGNITION**  
 ANSI Z21.97-(2017) / CSA 2.41-(2017)

