

 **CELESTRON**

ASTRONOMY



TECHNOLOGICAL INNOVATION



SkyAlign™

Ideal for beginners and advanced users alike, SkyAlign makes aligning a computerized telescope fast, easy, and accurate. Simply point at any three bright objects in the sky and the telescope aligns itself. From there, navigation and tracking is as easy as pushing a button.



StarBright™ XLT Coatings

One of the most important factors in a Schmidt-Cassegrain telescope is its transmission – the percentage of light that reaches the focal plane. To increase transmission, Celestron engineers developed proprietary StarBright XLT anti-reflective optical coatings, which we apply to all the mirrors and lenses in the optical system. The StarBright XLT coatings on the Schmidt corrector lens allow an impressive 97.4% transmission, enhancing views for visual observers and allowing more light to reach the CCD sensor during astronomical imaging.

EDGEHD OPTICS



EdgeHD™ Optics

Celestron's revolutionary aplanatic EdgeHD optics reduce off-axis star coma while providing an astrograph-quality flat focal plane all the way to the edge of the field of view. The result is a focal plane more than three times flatter than a standard Schmidt-Cassegrain telescope and dramatically flatter than other competing coma-free designs, guaranteeing sharp stars across today's largest CCD sensors.

LiFeP⚡4



LiFePO4 Battery Chemistry

Lithium iron phosphate (LiFePO4) boasts an un-recharged shelf life of 10 years compared to 3 years for the lithium-ion and 6-9 months for a sealed lead-acid battery. LiFePO4 can be charged and discharged 2000 times compared to only 500 for a lithium ion battery and 300 for sealed lead-acid designs so the batteries will last as long as the telescope you use it with. LiFePO4 uses phosphates instead of environmentally hazardous elements like cobalt or lead commonly found in other rechargeable batteries, it can withstand higher temperatures than lithium-ion designs, and will not be a fire danger if a cell is accidentally punctured.

All-Star™ Polar Alignment

Get ready for a night of astroimaging faster than previously thought possible. Once your telescope is aligned, All-Star Polar Alignment lets you use any bright star listed in the NexStar+ hand control to assist in mechanically aligning your mount with the North Celestial Pole through a straightforward centering process, so you spend less time aligning and more time imaging.



EXPERIENCE TRUE WIRELESS

THREE OF CELESTRON'S CUTTING-EDGE TECHNOLOGIES JOIN FORCES

Groundbreaking enhancements now enable automatic telescope alignment and complete wireless control from your smart device. Astronomical observing has never been easier!



StarSense AutoAlign

With Celestron's patented StarSense Technology, telescope alignment has never been easier! Just attach the StarSense AutoAlign accessory, push the Align button on the hand control or smart device, and StarSense begins capturing and comparing images of the night sky against its internal database.

In about three minutes, it's gathered enough information to triangulate its position and align itself. Then, press the Sky Tour button: StarSense will automatically slew to all the best stars, planets, galaxies, and more currently visible in the night sky.

WiFi

Celestron's telescopes reach a new level with integrated WiFi! Leave your hand control behind and slew to all the best celestial objects with a tap of your smart device. Connect your device to your WiFi telescope's built-in wireless network and explore the universe with Celestron's SkyPortal mobile app for iOS and Android.

Or upgrade your compatible Celestron computerized telescope with the SkyPortal WiFi module. SkyPortal provides full wireless control of your telescope and turns your smart device into your own personal planetarium and observatory!



SkyPortal

Celestron's newest planetarium app (co-developed by Simulation Curriculum) is an astronomy suite that redefines how you experience the night sky. Explore the Solar System, 120,000 stars, over 200 star clusters, nebulae, galaxies, and dozens of asteroids, comets, and satellites—including the ISS. SkyPortal includes everything you need to experience the night sky in an exciting new way. Upgrade to SkySafari Plus and SkySafari Pro for more features.



**WiFi + SKYPORTAL + STARSENSE =
AUTOMATIC ALIGNMENT . . . WIRELESSLY!**

SPECIALTY TELESCOPES



FirstScope #21024

- + Affordable entry-level telescope is ready for observing right out of the box
- + 76 mm Newtonian reflector optical tube decorated with the names of history's most notable astronomers
- + Dobsonian-style stand for easy lazy Susan-like navigation
- + Comes with two eyepieces (20 mm and 4 mm)
- + Portable, lightweight tabletop design folds into a compact size for travel and storage

Travel Scope 50 / Travel Scope 70 #21038 / #21035

- + Dual-purpose refractor for both terrestrial and astronomical viewing
- + Coated, all-glass optics for clear, crisp images
- + Smooth alt-azimuth mount for quick and easy pointing
- + Comes with a finderscope, erect image diagonal, and two eyepieces
- + Aluminum photographic tripod
- + Comes with a custom backpack for traveling and storage



Ambassador Series

- + A beautiful accent for your home or office that's also a fully functional dual-purpose telescope for both terrestrial and casual astronomical viewing
- + Vintage-inspired brass 50 mm and 80 mm refractor optical tubes with fully-coated optics
- + Full height models include a mahogany wooden tripod with brass accessory tray

Cometron 76 / Cometron 114AZ #21023 / #21079

- + 76 mm special edition Cometron FirstScope and 114AZ Newtonian reflector with coated, all-glass optics
- + Fast focal ratio offers a wide field of view perfect for observing comets, star clusters, galaxies, and more
- + 76 mm includes 5x24 finderscope and two 1.25" Kellner eyepieces (20 mm and 10 mm)
- + 114AZ includes StarPointer Red Dot finderscope, adjustable stainless steel tripod, and two 1.25" Kellner eyepieces (20 mm and 10 mm)



POWERSEEKER®

SERIES



ERECT IMAGE OPTICS*
for land or sky viewing



3X BARLOW
triples the
magnification



PowerSeeker telescopes are a great way to open up the wonders of the universe to the aspiring astronomer!

Celestron PowerSeeker telescopes are designed to give the first-time buyer the perfect combination of quality, value, features and power. These affordable telescopes feature ample optical performance and a portable design perfect for packing along on camping trips. PowerSeeker features all coated glass optical components for enhanced image brightness and clarity. All PowerSeekers include a full range of eyepieces plus a 3x Barlow lens, allowing an increase in viewing power hundreds of times greater than that of the unaided eye!

KEY FEATURES

- + Erect image optics* for land and sky viewing
- + Easy to assemble, no tools required
- + 3x Barlow lens triples the magnifying power of each included eyepiece
- + Astronomy software with 10,000 object database and printable sky maps

*PowerSeeker Newtonian reflector models contain one erect image eyepiece.

Item #	21039	21041	21043	21036	21037	21048	21087	21045	21049
MODEL NAME	PowerSeeker 50AZ	PowerSeeker 60AZ	PowerSeeker 60EQ	PowerSeeker 70AZ	PowerSeeker 70EQ	PowerSeeker 80EQ	PowerSeeker 80AZS	PowerSeeker 114EQ	PowerSeeker 127EQ
OPTICAL DESIGN / APERTURE	Refractor / 50 mm (2")	Refractor / 60 mm (2.4")	Refractor / 60 mm (2.4")	Refractor / 70 mm (2.8")	Refractor / 70 mm (2.8")	Refractor / 80 mm (3.1")	Refractor / 80 mm (3.1")	Reflector / 114 mm (4.5")	Reflector / 127 mm (5")
FOCAL LENGTH / FOCAL RATIO	600 mm / f/12	700 mm / f/12	900 mm / f/10	700 mm / f/10	700 mm / f/10	900 mm / f/11	400 mm / f/5	900 mm / f/8	1000 mm / f/8
WEIGHT	5 lbs.	7 lbs.	12 lbs.	8 lbs.	14 lbs.	18 lbs.	10 lbs.	23 lbs.	24 lbs.

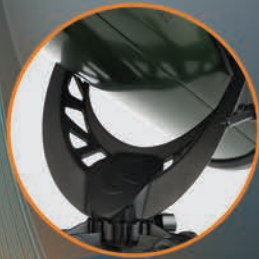
Learn more about PowerSeeker Series by visiting celestron.com/powerseeker

EXPLORASCOPE™

SERIES



ERECT IMAGE OPTICS
for land or sky viewing



NEWLY DESIGNED
lightweight, sturdy mount.

Engineered with the beginner in mind, Celestron's ExploraScope series is the perfect telescope to discover the Moon, rings of Saturn, moons of Jupiter, Orion Nebula, and all the best celestial objects. The included red dot finderscope helps you sight objects in the sky and center them in your telescope's eyepiece. Use the new altitude slow motion rod for precise pointing and following objects as they appear to move across the sky.

ExploraScope comes complete with everything you need to get started with amateur astronomy: 2 eyepieces, a 3x Barlow lens to triple the magnifying power of each eyepiece, an erect image diagonal* for correct image orientation, and a full-height aluminum tripod. With ExploraScope, you get the best out-of-the-box experience in the entry-level price range.

KEY FEATURES

- + Fully coated glass optics provide the best clarity and contrast
- + Erect image optics are perfect for viewing the stars in the sky or wildlife down on Earth
- + No-tool setup means you are up and observing in no time
- + Alt-azimuth mount with altitude slow motion control makes it easy to point and track celestial objects
- + Full accessory package: 2 eyepieces, a 3x Barlow lens, erect image diagonal* and full height aluminum tripod

* Erect image diagonal is included with all ExploraScope refractor models, 114AZ Newtonian reflector includes one erect image eyepiece.

Item #	22100	22101	22102	22103
MODEL NAME	ExploraScope 60AZ	ExploraScope 70AZ	ExploraScope 80AZ	ExploraScope 114AZ
OPTICAL DESIGN / APERTURE	Refractor / 60 mm (2.4")	Refractor / 70 mm (2.8")	Refractor / 80 mm (3.1")	Newtonian Reflector / 114 mm (4.5")
FOCAL LENGTH / FOCAL RATIO	700 mm / f/12	700 mm / f/10	900 mm / f/11	1000 mm / f/8.8
WEIGHT	8 lbs.	8 lbs.	11 lbs.	13 lbs.

Learn more about ExploraScope Series by visiting celestron.com/explorascope

ASTROMASTER® LT

SERIES



IDEAL FOR terrestrial and astronomical observing



PAN HANDLE ALT-AZ CONTROL with clutch for smooth and accurate pointing



Ideal for beginner astronomers and casual terrestrial observers looking for a compact, lightweight large aperture telescope. Celestron's dual-purpose AstroMaster LT series features precision construction and premium coated optics for bright, clear views, whether you're observing celestial objects or terrestrial landscapes. No matter which AstroMaster LT you choose, you'll be able to explore Earth's natural landscape as well as the craters of the Moon, the moons of Jupiter, and the rings of Saturn. For breathtaking views of deep-sky objects like galaxies and nebulae, consider the larger aperture Newtonian reflector.

KEY FEATURES

- + Ideal for terrestrial and astronomical observing
- + Fully coated glass optics
- + Easy to use alt azimuth mount
- + Red dot finderscope
- + Astronomy software with 10,000 object database and printable sky maps
- + Free SkyPortal app that will help you locate objects to view in the night sky

Item #	21073	21074	31036
MODEL NAME	AstroMaster LT 60AZ	AstroMaster LT 70AZ	AstroMaster LT 76AZ
OPTICAL DESIGN / APERTURE	Refractor / 60 mm (2.36")	Refractor / 70 mm (2.8")	Newtonian Reflector / 76 mm (3")
FOCAL LENGTH / FOCAL RATIO	700 mm / f/12	700 mm / f/10	700 mm / f/9
WEIGHT	13 lbs.	16 lbs.	12 lbs.

Learn more about AstroMaster LT Series by visiting celestron.com/astromasterlt

ASTROMASTER®

SERIES



GERMAN EQUATORIAL MOUNTS are equipped with setting circles and slow motion controls to accurately locate and track sky objects.



ALT-AZ MODELS come equipped with a convenient pan handle and built-in clutch for easy targeting and smooth motion. This mount design is best for viewing nature and celestial objects.

The quintessential beginner telescope, Celestron's dual-purpose AstroMaster series features precision optical elements and premium coated optics for bright, clear views, whether you're observing celestial objects or terrestrial landscapes. No matter which telescope you choose, you'll be able to explore the craters of the Moon, the belts of Jupiter, and the rings of Saturn. For breathtaking views of deep-sky objects like galaxies and nebulae, consider the larger aperture Newtonian reflectors.

KEY FEATURES

- + Refractor and Newtonian reflector optical tubes with coated, all-glass optics
- + Simple no-tool setup
- + Red dot finderscope, 1.25" star diagonal (refractors only), and two 1.25" eyepieces (20 mm and 10 mm)
- + Alt-azimuth and German equatorial mounts on rugged pre-assembled steel tripod with accessory tray
- + Astronomy software with 10,000 object database and printable sky maps

Item #	21061	21062	31035	21063	21064	31042	31045 / 31051*
MODEL NAME	AstroMaster 70AZ	AstroMaster 70EQ	AstroMaster 76EQ	AstroMaster 90AZ	AstroMaster 90EQ	AstroMaster 114EQ	AstroMaster 130EQ
OPTICAL DESIGN / APERTURE	Refractor / 70 mm (2.8")	Refractor / 70 mm (2.8")	Reflector / 76 mm (3")	Refractor / 90 mm (3.5")	Refractor / 90 mm (3.5")	Newtonian Reflector / 114 mm (4.5")	Newtonian Reflector / 130 mm (5")
FOCAL LENGTH / FOCAL RATIO	900 mm / f/13	900 mm / f/13	700 mm / f/9	1000 mm / f/11	1000 mm / f/11	1000 mm / f/9	650 mm / f/5
WEIGHT	18 lbs.	18 lbs.	16 lbs.	20 lbs.	27 lbs.	17 lbs.	28 lbs.

* Includes motor

Learn more about AstroMaster Series by visiting celestron.com/astromaster

INSPIRE™ SERIES



INTEGRATED SMARTPHONE ADAPTER
perfect for the budding astrophotographer



BUILT IN ACCESSORY TRAY
easily folds up with tripod

Celestron is synonymous with inspired design and it is with that attitude that we have created our most feature-packed entry level telescope to date. Whether you favor portability and long focal length for high magnification of the Moon and planets or a wider aperture suited for brighter deep space objects; with three models to choose from, Inspire has something for everyone. Easy to transport and stow, Inspire telescopes feature the simplest setup of any telescope in its class.

Bold new design: The lens cap comes with a fully integrated smartphone adapter, perfect for the budding astrophotographer. The asymmetrical mount design offers light weight and incredible stability. Erect image optics enable a fully correct image for easy viewing day or night, terrestrial or astronomical.

KEY FEATURES

- + Folding accessory tray provides the easiest setup of any entry level scope – just pop the steel tripod legs open, turn the lock knob and you're ready to go
- + Integrated smartphone adapter/lens cap. Four bungee cords secure your phone to the lens cap body, set screws secure the cap to the eyepiece
- + Red LED can be used to gently illuminate the accessory tray or can be removed for use as a spotlight when needed
- + Focus micrometer allows quick return to a specific focus point for specific targets
- + StarPointer Pro finderscope with a large field of view makes zeroing in on your targets quick and easy
- + Asymmetrical mount is light weight and incredibly stable
- + Erect image optics offer 90 degree viewing angle for ease of viewing, but still offers a fully correct image for easy viewing day or night

Item #	22401	22402	22403
MODEL NAME	Inspire 70AZ	Inspire 80AZ	Inspire 100AZ
OPTICAL DESIGN / APERTURE	Refractor / 70 mm (2.8")	Refractor / 80 mm (3.1")	Refractor / 100 mm (3.9")
FOCAL LENGTH / FOCAL RATIO	700 mm / f/10	900 mm / f/11	660 mm / f/6.5
WEIGHT	14 lbs.	17 lbs.	16 lbs.

Learn more about Inspire Series by visiting celestron.com/inspire

OmniXLT[®]

SERIES



SLOW MOTION CONTROLS
for easy targeting and tracking



StarBright[®] XLT
COATINGS

High-quality optics meet elegant design in the Omni XLT series. With multiple optical tube styles on both EQ and AZ mounts, the Omni XLT series has a setup to suit the needs of every amateur astronomer. For years, Celestron's Omni equatorial mount has set the industry standard for state of the art design. Now our engineers have brought a new level of sophistication to the alt azimuth mount. Designed from the ground up, it's our best manual AZ mount ever.

Our proprietary StarBright XLT coatings maximize light transmission for the brightest possible images. Worm gears on both axes provide smooth, easy motion when tracking targets. With three optical tube styles and your choice of mounts, the Omni XLT series has a setup to suit the needs of every amateur astronomer.

KEY FEATURES

- + Refractor, Newtonian reflector, and Schmidt-Cassegrain optical tubes with StarBright XLT optical coatings
- + CG-4 German equatorial mount with setting circles, worm gear slow-motion controls and ball bearings on both axes
- + Alt-AZ mount with worm gears for smooth tracking of celestial objects and slip clutches for quick and easy pointing
- + 6x30 finderscope (EQ) / StarPointer Pro finderscope (AZ)
- + Sturdy pre-assembled steel tripod (EQ) or aluminum tripod (AZ) with accessory tray
- + Astronomy software with 10,000 object database and printable sky maps

Item #	21088	21090	31057	11084	22150	22151	22152
MODEL NAME	Omni XLT 102	Omni XLT 120	Omni XLT 150	Omni XLT 127	Omni XLT AZ 102	Omni XLT AZ 114	Omni XLT AZ 130
OPTICAL DESIGN / APERTURE	Refractor / 102 mm (4")	Refractor / 120 mm (4.7")	Newtonian Reflector / 150 mm (6")	Schmidt-Cassegrain / 127 mm (5")	Refractor / 102mm (4")	Newtonian Reflector / 114 mm (4.5")	Newtonian Reflector / 130 mm (5.1")
FOCAL LENGTH / FOCAL RATIO	1000 mm / f/10	1000 mm / f/8.3	750 mm / f/5	1250 mm / f/10	660 mm / f/6.5	450 mm / f/4	650 mm / f/5
WEIGHT	43 lbs.	46 lbs.	45.5 lbs.	40 lbs.	13.8 lbs	13.8 lbs	17.4 lbs

Learn more about Omni XLT Series by visiting celestron.com/omnixlt

LCM SERIES



COMPUTERIZED TELESCOPE automatically locates thousands of celestial objects using the NexStar+ hand control



Get the same advanced features on some of today's top telescope systems at a fraction of the price with the LCM Computerized Telescope series. Aspiring astronomers will love using this computerized telescope to view stars, planets, nebulae, galaxies, and more with the tap of a button. Getting set up is easy, too, with our award-winning SkyAlign technology. Just center any three bright objects in your telescope's eyepiece, and the computer calculates its exact position. From there, your LCM can navigate to any target in its 4,000-object database. You don't need to know the names of stars or constellations, just scroll through the list of the best objects visible and let your LCM telescope show you the universe in a whole new way.

KEY FEATURES

- + Refractor and Newtonian reflector optical tubes with coated all-glass optics
- + SkyAlign alignment technology
- + Lightweight computerized alt-azimuth mount with 4,000+ object database and flash-upgradeable NexStar+ hand control
- + Red dot finderscope, 1.25" star diagonal (refractors only), and two 1.25" eyepieces (25 mm and 9 mm)
- + Pre-assembled aluminum tripod with accessory tray
- + Astronomy software with 10,000 object database and printable sky maps
- + Powered by 8x AA batteries or optional external power supply

Item #	22050	22051	31150
MODEL NAME	60LCM	80LCM	114LCM
OPTICAL DESIGN / APERTURE	Refractor / 60 mm (2.4")	Refractor / 80 mm (3.1")	Newtonian Reflector / 114 mm (4.5")
FOCAL LENGTH / FOCAL RATIO	700 mm / f/12	900 mm / f/11	1000 mm / f/8.8
WEIGHT	10 lbs.	14 lbs.	15 lbs.

Learn more about LCM Series by visiting celestron.com/lcm

NexStar SLT

SERIES



FULLY COMPUTERIZED
alt-azimuth mount

STARPOINTER FINDERSCOPE
helps sight and center objects



Take your explorations to new heights with Celestron's NexStar SLT line. The sturdy single fork arm mount anchors your telescope, providing improved stability and performance. Available with a variety of optical designs and up to 130 mm in aperture, the NexStar SLT has something for everyone. Beginners will appreciate the intuitive SkyAlign technology, which makes aligning your telescope's computer to the night sky as easy as centering three bright objects in the eyepiece. The NexStar SLT is a precision instrument that can grow with you in the hobby of amateur astronomy for years to come.

KEY FEATURES

- + Refractor, Newtonian reflector, and Maksutov-Cassegrain optical tubes with all-glass coated optics
- + SkyAlign alignment technology
- + Computerized alt-azimuth mount with quick-release fork-arm mount, auxiliary port for additional accessories, 4,000+ object database, and flash-upgradeable NexStar+ hand control
- + Powered by 8x AA batteries or optional external power supply
- + StarPointer finderscope, 1.25" star diagonal*, and two 1.25" eyepieces (25 mm and 9 mm)
- + Sturdy pre-assembled steel tripod with accessory tray
- + Astronomy software with 10,000 object database and printable sky maps

*Not included with NexStar 130 SLT Newtonian reflector

Item #	22087	22097	22096	31145
MODEL NAME	NexStar 90 SLT	NexStar 127 SLT	NexStar 102 SLT	NexStar 130 SLT
OPTICAL DESIGN / APERTURE	Maksutov-Cassegrain / 90 mm (3.5")	Maksutov-Cassegrain / 127 mm (5")	Refractor / 102 mm (4")	Newtonian Reflector / 130 mm (5.1")
FOCAL LENGTH / FOCAL RATIO	1250 mm / f/14	1500 mm / f/12	660 mm / f/6	650 mm / f/5
WEIGHT	12 lbs.	18 lbs.	14 lbs.	18 lbs.

Learn more about NexStar SLT Series by visiting celestron.com/nexstarslt

ASTRO FI™

SERIES



CONTROL YOUR TELESCOPE VIA INTEGRATED WIFI using the free Celestron SkyPortal app for iPhone, iPad, and Android devices



Explore the sky in WiFi with Celestron's newest innovative line: Astro Fi. A perfect beginner or intermediate level telescope, Astro Fi is changing the way we experience the night sky. Choose your view with three classic designs. For a truly wireless observing experience, Astro Fi features full telescope alignment and motorized Go-To control via WiFi with no need for a hand controller. Simply connect Astro Fi to the free SkyPortal planetarium app from Celestron, align the telescope by centering any three bright stars in the eyepiece, and you'll be controlling your telescope in minutes with your iOS or Android smart device.

KEY FEATURES

- + Control your telescope via integrated WiFi using the free Celestron SkyPortal app for iPhone, iPad, and Android devices
- + Available in 130 mm Newtonian, 102 mm Maksutov-Cassegrain, and 90 mm refractor designs
- + Accessory tray holds two 1.25" eyepieces, miscellaneous accessories, and features a rubber-lined area for a smartphone or small tablet
- + Includes a StarPointer finderscope, two Kellner eyepieces, and mirror star diagonal (refractor and Maksutov only)
- + Powered by 8x AA batteries or an optional external power supply

Item #	22201	22202	22203
MODEL NAME	Astro Fi 90	Astro Fi 102	Astro Fi 130
OPTICAL DESIGN / APERTURE	Refractor / 90 mm (3.5")	Maksutov-Cassegrain / 102 mm (4")	Newtonian Reflector / 130 mm (5")
FOCAL LENGTH / FOCAL RATIO	910 mm / f/10	1325 mm / f/13	650 mm / f/5
WEIGHT	9 lbs.	10 lbs.	13 lbs.

Learn more about Astro Fi Series by visiting celestron.com/astrofi

SKYPRODIGY™ SERIES



STARSENSE TECHNOLOGY
automatically aligns your
telescopes in minutes!



Meet SkyProdigy, your personal tour guide of the universe.

This groundbreaking telescope makes it easier than ever to locate objects in the night sky, even if you've never used a telescope before. Just turn it on and push "Align" on the hand control. SkyProdigy uses patented StarSense technology to capture images of star patterns and match them like fingerprints to its internal database, automatically aligning itself in about three minutes. Based on your exact time and location, StarSense can determine all the best planets, stars, star clusters, and other celestial objects currently visible. Choose an object from the list, and your telescope centers it perfectly in your eyepiece.

KEY FEATURES

- + Newtonian reflector and Schmidt-Cassegrain optical tubes with fully multi-coated optics
- + StarSense fully automatic alignment technology
- + Computerized alt-azimuth mount with quick-release fork-arm mount and flash-upgradeable StarSense hand control with 4,000+ object database
- + StarPointer finderscope, 1.25" star diagonal (Schmidt-Cassegrain only), and two 1.25" eyepieces (25 mm and 9 mm)
- + Sturdy pre-assembled steel tripod with accessory tray
- + Astronomy software with 10,000 object database and printable sky maps

Item #	31153	11076
MODEL NAME	SkyProdigy 130	SkyProdigy 6
OPTICAL DESIGN / APERTURE	Newtonian Reflector / 130 mm (5.12")	Schmidt-Cassegrain / 150 mm (6")
FOCAL LENGTH / FOCAL RATIO	650 mm / f/15	1500 mm / f/10
WEIGHT	18 lbs.	23 lbs.

Learn more about SkyProdigy Series by visiting celestron.com/skyprodigy

NexStar[®] SE SERIES



MULTIPLE OPTICAL TUBE SIZES
to accommodate everyone!



StarBright[®] XLT
COATINGS

Back in 1970, Celestron made its mark on the astronomy market with its legendary orange-tube C8. The NexStar SE line continues that heritage, with vivid orange tubes in four apertures on a smooth computerized alt-azimuth mount. Pair that with StarBright XLT optical coatings, SkyAlign, a built-in astroimaging wedge (on the 4SE and 5SE), and the NexStar SE becomes a reliable all-around setup that astronomers of all experience levels will take out again and again to experience our solar system and beyond.

KEY FEATURES

- + Maksutov-Cassegrain and Schmidt-Cassegrain optical tubes with StarBright XLT optical coatings
- + SkyAlign alignment technology
- + Computerized alt-azimuth mount with quick-release fork-arm mount, built-in wedge (on 4SE and 5SE models), 40,000 object database, and flash-upgradeable NexStar+ hand control
- + StarPointer finderscope, 1.25" star diagonal, and 1.25" 25 mm eyepiece
- + Sturdy pre-assembled steel tripod with accessory tray
- + Astronomy software with 10,000 object database and printable sky maps

Item #	11049	11036	11068	11069
MODEL NAME	NexStar 4SE	NexStar 5SE	NexStar 6SE	NexStar 8SE
OPTICAL DESIGN / APERTURE	Maksutov-Cassegrain / 102 mm (4")	Schmidt-Cassegrain / 125 mm (5")	Schmidt-Cassegrain / 150 mm (6")	Schmidt-Cassegrain / 203 mm (8")
FOCAL LENGTH / FOCAL RATIO	1325 mm / f/13	1250 mm / f/10	1500 mm / f/10	2032 mm / f/10
WEIGHT	21 lbs.	28 lbs.	30 lbs.	33 lbs.

Learn more about NexStar SE Series by visiting celestron.com/nexstarse

NEXSTAR[®] EVOLUTION SERIES



LiFeP⁴



StarBright[®] XLT
COATINGS



**EXPLORE THE UNIVERSE
WIRELESSLY** and control
your Evolution telescope with
the free Celestron SkyPortal
app for iOS and Android!

Celestron's signature telescopes reach a new level with NexStar Evolution, the first Schmidt-Cassegrain telescopes with integrated WiFi. Leave your hand control behind and slew to all the best celestial objects with a tap of your smartphone or tablet. We've perfected the key technologies and industrial design that have defined Celestron for over 50 years. Our proprietary SkyAlign alignment procedure is built right into the Celestron mobile app, so you're ready to observe within minutes. Enjoy stargazing marathons of up to 10 hours without external power using the integrated Lithium Iron Phosphate battery.

NexStar Evolution also offers worm gears and improved motors along with a sturdy single fork arm mount for impressive pointing and tracking accuracy. And of course, the Schmidt-Cassegrain optical system offers bright, sharp views with StarBright XLT optical coatings—a great choice for visual observers and budding astroimagers.

KEY FEATURES

- + Wireless control from your iOS or Android smartphone or tablet with the free Celestron mobile app with planetarium interface and SkyAlign technology
- + Available with 6-, 8-, and 9.25-inch Schmidt-Cassegrain optical tubes with StarBright XLT optical coatings and Fastar compatibility
- + Computerized Go-To mount with high-performance worm gears and motors for improved tracking accuracy, along with reduced gear backlash
- + Rechargeable lithium iron phosphate battery with enough power for 10 hours of continuous observing
- + Improved industrial design with manual clutches, integrated carry handles, two accessory trays and USB charge port for your smart device
- + Sturdy steel tripod with indexed tripod legs for easy height adjustment
- + Includes StarPointer finderscope, two 1.25" Plössl eyepieces, 1.25" mirror star diagonal, AC adapter, and optional hand control

Item #	12090	12091	12092
MODEL NAME	NexStar Evolution 6	NexStar Evolution 8	NexStar Evolution 9.25
OPTICAL DESIGN / APERTURE	Schmidt-Cassegrain / 6" (150 mm)	Schmidt-Cassegrain / 8" (203 mm)	Schmidt-Cassegrain / 9.25" (235 mm)
FOCAL LENGTH / FOCAL RATIO	1500 mm / f/10	2032 mm / f/10	2350 mm / f/10
WEIGHT	35.4 lbs.	40.6 lbs.	46.6 lbs.

Learn more about NexStar Evolution Series by visiting celestron.com/nexstarevolution

NEXSTAR[®] EVOLUTION HD

WITH STARSense AUTO ALIGN



StarSense
TECHNOLOGY

EDGEHD
OPTICS

WiFi
READY

LiFePO₄



StarBright[®] XLT
COATINGS



STARSense AUTOALIGN
automatically aligns your
telescope and works with
the SkyPortal app for
complete wireless control

The Evolution family has a brand new bundle that features all of Celestron's best optics and most innovative technologies into one extremely versatile package. Included in this bundle, Celestron's StarSense AutoAlign accessory takes all the guesswork out of the alignment procedure by using its internal camera to map the sky, analyze its position on Earth, and then align the telescope for computerized Go-To and tracking.

Without knowing a thing about astronomy, your Evolution can be completely aligned to the night sky in a matter of minutes! With all of these added features, the NexStar Evolution 8 HD package is the most capable, easy-to-use, and ready-for-action system.

KEY FEATURES

- + 8" EdgeHD Optics provide superb visual and astroimaging performance, free of coma and field curvature
- + Rechargeable lithium iron phosphate battery has enough power for 10 hours of continuous observing
- + Built-in WiFi means no hand controller is required! Just use your smartphone or tablet which connects to the telescope via WiFi
- + StarSense AutoAlign automatically aligns your telescope and works with the SkyPortal app for complete wireless control
- + Fastar/Hyperstar compatible: Image deep sky objects in seconds at f/2, often eliminating the need to autoguide or track on a wedge
- + NexStar Evolution mount is packed with convenient features including manual release clutches and precision machined worm gears for both axes, USB charge port, tray lighting for your accessories, and more
- + Automatically align with StarSense then select and go to objects with a tap on your smart device

Item #	12096
MODEL NAME	NexStar Evolution 8 HD with StarSense
OPTICAL DESIGN / APERTURE	EdgeHD / 8" (203 mm)
FOCAL LENGTH / FOCAL RATIO	2032 mm / f/10
WEIGHT	35.4 lbs.

Learn more about NexStar Evolution HD by visiting celestron.com/nexstarevolution

CPC™ SERIES



FULLY COMPUTERIZED
dual fork arm alt-azimuth
mount for greater stability



A rock-solid dual fork arm mount and large aperture at an affordable price: that's what makes the CPC telescope series a favorite among experienced amateur astronomers. Celestron's revolutionary SkyAlign plus an internal GPS make alignment a snap. Use the computerized hand control to quickly slew to over 40,000 celestial objects, then track your target precisely as it moves across the night sky. Imagers can place the CPC dual fork arm mount on an optional HD Pro Wedge to polar align it for long-exposure astrophotography. Thoughtful ergonomic design makes setting up and breaking down your CPC quick and painless.

KEY FEATURES

- + Schmidt-Cassegrain optical tubes with StarBright XLT optical coatings
- + Computerized dual fork-arm mount with precision drive base and mechanics, quick-release clutch, large drive gears, ultra-wide bearing track drive base, auxiliary ports, 40,000 object database, and flash-upgradeable NexStar+ hand control
- + SkyAlign, All-Star Polar Alignment, and internal GPS technology
- + Permanently programmable periodic error correction when used with HD Pro Wedge
- + 8x50 finderscope, 1.25" star diagonal, and 1.25" 40 mm Plössl eyepiece
- + Heavy-duty steel tripod with accessory tray, spring-loaded mounting screws, and recessed mounting platform

Item #	11073-XLT	11074-XLT	11075-XLT
MODEL NAME	CPC 800	CPC 925	CPC 1100
OPTICAL DESIGN / APERTURE	Schmidt-Cassegrain / 203 mm (8")	Schmidt-Cassegrain / 235 mm (9.25")	Schmidt-Cassegrain / 279 mm (11")
FOCAL LENGTH / FOCAL RATIO	2032 mm / f/10	2350 mm / f/10	2800 mm / f/10
WEIGHT	69 lbs.	85 lbs.	92 lbs.

Learn more about CPC Series by visiting celestron.com/cpc

CPC DELUXE HD SERIES



StarBright® XLT
COATINGS



EDGEHD OPTICAL TUBE
provides stunning views
and sharp astroimages
free of visual defects



SkyAlign™
evolutionary Alignment Technology

We've improved upon the beloved CPC telescope and added acclaimed EdgeHD optics to create a system primed for serious visual observing and astroimaging. The CPC's signature dual fork arm mount has a re-engineered worm gear motor drive for the smoothest tracking performance. Featuring the pinnacle of Celestron's optical technology—EdgeHD—the CPC Deluxe HD offers unsurpassed views with pinpoint stars all the way to the edge of the field of view. This versatile system also meets the needs of advanced imagers, featuring All-Star Polar Alignment with the optional HD Pro Wedge accessory.

KEY FEATURES

- + EdgeHD Schmidt-Cassegrain optical tubes with StarBright XLT coatings
- + Computerized dual fork-arm mount with redesigned worm-gear drive base and mechanics, ultra-wide bearing track drive base, auxiliary ports, 40,000 object database, and flash-upgradeable NexStar+ hand control
- + SkyAlign, All-Star Polar Alignment, and internal GPS technology plus Fastar compatibility
- + Permanently programmable periodic error correction when used with HD Pro Wedge
- + Primary mirror support clutches and cooling vents
- + 50 mm finderscope, 2" star diagonal, and 2" 23 mm Luminos eyepiece included with 925 and 1100 models. CPC DX 800 HD includes 50 mm finderscope, 40 mm Plössl eyepiece and 1.25" star diagonal.
- + Heavy-duty steel tripod with accessory tray, spring-loaded mounting screws, and recessed mounting platform

Item #	11007	11008	11009
MODEL NAME	CPC Deluxe 800 HD	CPC Deluxe 925 HD	CPC Deluxe 1100 HD
OPTICAL DESIGN / APERTURE	EdgeHD / 203.2 mm (8")	EdgeHD / 235 mm (9.25")	EdgeHD / 279 mm (11")
FOCAL LENGTH / FOCAL RATIO	2032 mm / f/10	2350 mm / f/10	2800 mm / f/10
WEIGHT	78 lbs	85 lbs.	93 lbs.

Learn more about CPC Deluxe HD Series by visiting celestron.com/cpcdeluxe



ALLOWS VIEWING OR IMAGING ACROSS THE MERIDIAN without interference from the motors housings



Engineered from the ground up for optimum astroimaging performance and value, the Advanced VX offers the same features found on our top German equatorial mounts in a compact and portable package perfect for loads under 30 lbs. Use the built-in All-Star Polar Alignment technology and you're ready to image in minutes, even without a clear view of Polaris. Improved motors handle slight load imbalances with ease, while sturdy 2-inch steel tripod legs add rigidity to your system. With Advanced VX, you can image through the meridian, accurately track through long exposures using permanently programmable periodic error correction, and so much more. Pair this revolutionary mount with your favorite optical tube—including the available 8-inch EdgeHD—and take your imaging to the next level.

KEY FEATURES

- + Refractor, Newtonian reflector, Schmidt-Cassegrain, and EdgeHD Schmidt-Cassegrain optical tubes
- + All-Star Polar Alignment plus Fastar compatibility on SCT and Edge tubes
- + Computerized German equatorial mount with permanently programmable periodic error correction, 40,000 object database, and flash-upgradeable NexStar+ hand control
- + Allows viewing or imaging across the meridian without interference from the motor's housings, and can be used between 7° -77° latitude
- + 6x30 or 9x50 finderscope and 1.25" eyepiece (varies with model)
- + Steel tripod with accessory tray

Item #	32054	32062	12079	22020	12026	12031	12046	12067
MODEL NAME	Advanced VX 6" Newtonian	Advanced VX 8" Newtonian	Advanced VX 6" SCT	Advanced VX 6" Refractor	Advanced VX 8" SCT	Advanced VX 8" EdgeHD	Advanced VX 9.25" SCT	Advanced VX 11" SCT
OPTICAL DESIGN / APERTURE	Newtonian Reflector / 150 mm (6")	Newtonian Reflector / 200 mm (8")	Schmidt-Cassegrain / 150 mm (6")	Refractor / 150 mm (6")	Schmidt-Cassegrain / 203 mm (8")	EdgeHD 8" / 203 mm (8")	Schmidt-Cassegrain / 235 mm (9.25")	Schmidt-Cassegrain / 280 mm (11")
FOCAL LENGTH / FOCAL RATIO	750 mm / f/5	1000 mm / f/5	1500 mm / f/10	1200 mm / f/8	2032 mm / f/10	2032 mm / f/10	2350 mm / f/10	2800 mm / f/10
WEIGHT	56 lbs.	71 lbs.	56 lbs.	76 lbs.	59 lbs.	59 lbs.	77 lbs.	95 lbs.

Learn more about Advanced VX Series by visiting celestron.com/advancedvx

CGEM IITM

SERIES



StarBright® XLT
COATINGS



EDGEHD
OPTICS

**NEW DESIGN WITH
IMPROVED ERGONOMICS**
Dual saddle plate for both
small and larger style
dovetail bars

A fresh update to the venerable CGEM mount, the CGEM II has an attractive, bold appearance and is capable of carrying Celestron's higher-end SCT optical tubes (up to 11") securely and vibration free, which is ideal for both imaging and visual observing. Capable of holding 40 lbs. of payload and slewing at 5° per second, you will be able to instantly point to any of the celestial objects in the database.

The CGEM II contains innovative new features such as the dual-sized dovetail saddle plate, graduated markings on the tripod legs, USB 2.0 connection on hand controller for PC connection, Permanent Periodic Error Correction, dedicated auto guider port and the ability to track past the meridian.

KEY FEATURES

- + Dual saddle plate allows the direct attachment of telescope tubes using the smaller CG-5 style dovetail bars or the larger CGE dovetail bars, with no adapters necessary
- + The 2" heavy duty steel tripod legs have graduated markings on the inner section making it quick and easy to extend the legs to the same height
- + USB 2.0 port located on the bottom of the hand control for direct links to a PC via ASCOM supported software. Allows for easy firmware updating for hand control and mount
- + Track past the meridian allowing you to seamlessly image through the most ideal part of the sky
- + Permanent Periodic Error Correction allows users to train out the worm gears periodic errors once, while the mount retains the PEC recordings
- + Built-in All-Star Polar Alignment program offers accurate polar aligning possible on any star in the sky, even if you don't have a direct view of the celestial pole - making polar finderscopes obsolete
- + Mount weighs 40 lbs – Tripod weighs 20 lbs

Item #	12010	12011	12012	12017	12018	12019
MODEL NAME	CGEM II 800	CGEM II 925	CGEM II 1100	CGEM II 800 EdgeHD	CGEM II 925 EdgeHD	CGEM II 1100 EdgeHD
OPTICAL DESIGN / APERTURE	Schmidt-Cassegrain / 203 mm (8")	Schmidt-Cassegrain / 235 mm (9.25")	Schmidt-Cassegrain / 280 mm (11")	EdgeHD / 203.2 mm (8")	EdgeHD / 235 mm (9.25")	EdgeHD / 279 mm (11")
FOCAL LENGTH / FOCAL RATIO	2032 mm / f/10	2350 mm / f/10	2800 mm / f/10	2032 mm / f/10	2350 mm / f/10	2800 mm / f/10

Learn more about CGEM II Series by visiting celestron.com/cgem2

CGX™ SERIES



StarBright® XLT
COATINGS

ALL NEW DESIGN -
Higher 55 lb load capacity
and increased rigidity



Celestron's engineering team applied their years of experience designing German Equatorial mounts to the all-new CGX, a culmination of all the advancements made to our technologies.

By refocusing our design efforts and anticipating the needs of today's visual observers and astroimagers, Celestron has achieved a new level of state of the art with the all new CGX German equatorial mount. Compact. Solid. Innovative. Totally redesigned with a lower profile, CGX is sturdier and more rigid than its predecessors with several new innovative features and new control software ideally suited for automation and remote operation.

Ideal for pairing with an assortment of optical tube assemblies, CGX sets a bold new standard for rock solid equatorial tracking, observing, and imaging.

KEY FEATURES

- + Massive 55 lb. load capacity, heavy duty 2" steel tripod legs with graduated markings for quick leveling
- + Spring-loaded worm gears with belt drives that minimize backlash for a more responsive mount
- + Internal cabling; power and accessory ports do not move with mount
- + Improved ergonomics with smoother polar align adjustments and intuitive carry handles
- + Home and limit switches, internal hard stops for R.A. and Dec to prevent cable wrap and tripod strike
- + Tracks 20° past meridian on either side and supports SkyPortal WiFi and StarSense AutoAlign accessories.
- + Includes sophisticated new telescope control software developed in conjunction with Planewave Instruments. Features include multi-point Go-To modeling, focusing, and plate solving. No third party advanced PC control software is needed, saving hundreds of dollars!
- + Mount weighs 44 lbs – Tripod weighs 19.2 lbs

Item #	12050	12051	12052	12055	12056	12057	12059
MODEL NAME	CGX 8" SCT	CGX 9.25" SCT	CGX 11" SCT	CGX 8" EdgeHD	CGX 9.25" EdgeHD	CGX 11" EdgeHD	CGX 11" RASA
OPTICAL DESIGN / APERTURE	Schmidt-Cassegrain / 203 mm (8")	Schmidt-Cassegrain / 235 mm (9.25")	Schmidt-Cassegrain / 280 mm (11")	EdgeHD 8" / 203 mm (8")	EdgeHD / 235 mm (9.25")	EdgeHD / 279 mm (11")	Rowe-Ackermann Schmidt Astrograph / 279 mm (11")
FOCAL LENGTH / FOCAL RATIO	2032 mm / f/10	2350 mm / f/10	2800 mm / f/10	2032 mm / f/10	2350 mm / f/10	2800 mm / f/10	620 mm / f/2.2

Learn more about CGX Series by visiting celestron.com/cgx

CGX-L™ SERIES



**LARGER
WORM WHEELS**
to accurately drive
heavier loads



StarBright® XLT
COATINGS

Celestron's newly designed CGX-L is the newest member of our fully computerized German Equatorial mount series capable of carrying Celestron's larger optical tubes and accessories with ease. CGX-L was designed for backyard observatories and remote imagers looking for exceptional load capacity to weight ratio, compact design, and innovative features that fully support large telescopes, imaging kits, and the latest in wireless tech accessories.

Key design goals included larger 144 mm diameter worm wheels which provide smoother operation and can more accurately drive heavier loads, longer 270 mm dovetail saddle to support larger optical tubes, remote operation friendly features such as home and limit optical sensors, easier polar alignment adjustments, and better cable management overall. In addition, we've made mechanical and ergonomic improvements throughout to make the mount sturdier, easier to use, and easier to transport.

KEY FEATURES

- + Massive 75 lbs load capacity, heavy duty 70 mm steel tripod legs with a wider and more stable stance
- + Larger 144 mm diameter worm wheels to better and more accurately drive heavier loads
- + Internal cabling; power and lower accessory ports do not move with mount
- + Improved ergonomics with smoother polar align adjustments and intuitive carry handles
- + Home and limit sensors, internal hard stops for R.A. and Dec to prevent cable wrap and tripod strike
- + Tracks 20° past meridian on either side and supports SkyPortal WiFi and StarSense AutoAlign accessories.
- + Includes Celestron's new PWI telescope control software developed in collaboration with PlaneWave Instruments.
- + Mount weighs 52 lbs – Tripod weighs 46 lbs

Item #	12070	12071	12072	12075	12076	12077	12078
MODEL NAME	CGX-L 9.25" SCT	CGX-L 11" SCT	CGX-L 14" SCT	CGX-L 9.25" EdgeHD	CGX-L 11" EdgeHD	CGX-L 14" EdgeHD	CGX-L 11" RASA
OPTICAL DESIGN / APERTURE	Schmidt-Cassegrain / 235 mm (9.25")	Schmidt-Cassegrain / 280 mm (11")	Schmidt-Cassegrain / 356 mm (14")	EdgeHD / 235 mm (9.25")	EdgeHD / 279 mm (11")	EdgeHD / 356 mm (14")	Rowe-Ackermann Schmidt Astrograph / 279 mm (11")
FOCAL LENGTH / FOCAL RATIO	2350 mm / f/10	2350 mm / f/10	3910 mm / f/11	2032 mm / f/10	2350 mm / f/10	3910 mm / f/11	620 mm / f/2.2

Learn more about CGX-L Series by visiting celestron.com/cgx-l

GERMAN EQUATORIAL MOUNTS

When assembling your ideal telescope, rely on Celestron's mounts as the perfect stable foundation. Each mount is ergonomically designed and optimized to accommodate your specific needs, from ease of setup, portability, stability and precision to alignment and celestial database technology.



Advanced VX Mount

CGEM II Computerized Mount

MODEL	ITEM #	DESCRIPTION	WEIGHT
Advanced VX Mount	91519	Advanced Computerized German Equatorial Mount for loads up to 28 lbs.	45 lbs.
CGEM II Computerized Mount	91523	Innovative Computerized German Equatorial Mount for loads up to 40 lbs.	77 lbs.



CGX Computerized Mount

CGX-L Computerized Mount

MODEL	ITEM #	DESCRIPTION	WEIGHT
CGX Computerized Mount	91530	State-of-the-art Computerized German Equatorial Mount for loads up to 55 lbs.	87.4 lbs
CGX-L Computerized Mount	91531	State-of-the-art Computerized German Equatorial Mount for loads up to 75 lbs.	98.8 lbs

Learn more about Celestron Mounts by visiting [celestron.com/mounts](https://www.celestron.com/mounts)

ROWE-ACKERMANN SCHMIDT ASTROGRAPH



THE ULTIMATE ASTROIMAGING TOOL, the Rowe-Ackermann Schmidt Astrograph cannot be used for visual observing at all. It was optimized as a complete system for wide field imaging. Just attach your DSLR or CCD camera to the front of the telescope and you're ready to produce the next generation of award-winning astrophotos.



Horsehead Nebula by Jimmy Walker with RASA

Capturing impressive deep-sky astroimages is easier than ever with Celestron's Rowe-Ackermann Schmidt Astrograph, the perfect companion to today's top DSLR or astronomical CCD cameras. This fast, wide-field f/2.2 system offers two huge advantages over traditional f/10 astroimaging: better apparent tracking and shorter exposures. That means you'll create better-looking astroimages in a fraction of the time, even without the use of an autoguider.

The Rowe-Ackermann Schmidt Astrograph builds on the legacy of Celestron's Schmidt Camera, which allowed astrophotographers to produce images on film in the 1980s. Today, with CCD sensor sizes as large as film—or larger—the Schmidt Astrograph offers a full 43.4 mm optimized image circle to capture pinpoint, diffraction-limited stars on the largest imaging chips.

The Rowe-Ackermann Schmidt Astrograph features newly designed optics with 4-element rare-earth glass for images free of false color and aberrations like coma and field curvature. Meanwhile, a 12V MagLev fan reduces cool down time and provides optimal airflow through the optical tube. Advanced features like a custom engineered linear brass focuser bearing and FeatherTouch Micro Focus Knob allow you to make the fine adjustments you need to capture the perfect shot.



M42 Orion Nebula by Jimmy Walker with RASA



M31 Andromeda Galaxy by Jimmy Walker with RASA

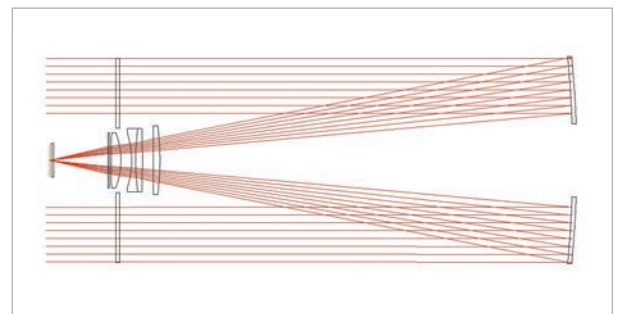


Heart Nebula by Jimmy Walker with RASA

Rowe-Ackermann Schmidt Astrograph Key Features

- + 11-inch f/2.2 optical design with rare-earth glass for images free of false color, coma, and field curvature
- + 43.3 mm optimized image circle (with a 52 mm useable field) maintains diffraction limited, pinpoint stars to the far corners of even the largest astroimaging sensors
- + Custom engineered linear brass focuser bearing reduces image shift, while dual-speed 10:1 Feather-Touch Micro Focus Knob provides the most precise focusing
- + Quiet, high-output 12V MagLev fan reduces cool down time and blocks dust
- + Solid anodized aluminum dovetail minimizes tube-to-mount flexure
- + Common camera adapters (T-thread and M48) included for easy attachment to popular CCD and DSLR cameras

Item #	91075
Model Name	Rowe-Ackermann F/2.2 Schmidt Astrograph
Optical Design / Aperture	Rowe-Ackermann-Schmidt-Astrograph / 279 mm (10.98")
Focal Length / Focal Ratio	620 mm / f/2.2
Weight	34 lbs.



Inventor Dave Rowe and optical engineer Mark Ackermann collaborated to create the Rowe-Ackermann Schmidt Astrograph's unique optical design.

Learn more about Rowe-Ackermann Schmidt Astrograph by visiting [celestron.com/rasa](https://www.celestron.com/rasa)

EDGEHD™

OPTICS

With the advent of large CCD sensors and ultra-wide field eyepieces, Celestron's engineers set out to develop a completely flat-field optical system. The result was EdgeHD: an aplanatic Schmidt telescope free of the aberrations of field curvature and coma. When you look through an EdgeHD telescope, you'll see crisp stars all the way to the edge of the field of view—no streaky or doughnut-shaped stars. If you're an astroimager, you can be confident in your EdgeHD, because every single unit must pass a photographic test before leaving our factory. A man-made star is tested on all corners of a full-frame 42 mm CCD sensor for a sharp, round, pinpoint appearance every time.

- + Astrograph-quality optical technology at an affordable price
- + Pinpoint stars all the way to the edge of a full-frame CCD sensor
- + Available in 8- to 14-inch apertures



Fox Fur Nebula and NGC 2264 Region by Bryan Cogdell with EdgeHD 800



IC 405 Dancing Blue by Tony Hallas with EdgeHD 1100



Crab Nebula by Andre Paquette with EdgeHD 1400

Astroimaging is one of the most rewarding activities amateur astronomers can participate in. EdgeHD optics can produce results that were only attainable by professional level (and professionally priced!) equipment as little as a decade ago. Hundreds of thousands of amateur astronomers now spend their time under the night sky, capturing stunning images of the heavens above.

Learn more about EdgeHD Series by visiting [celestron.com/edgehd](https://www.celestron.com/edgehd)

EDGEHD™

OPTICAL TUBE ASSEMBLIES

Offered both as a solo optical tube assembly and in packages with our finest computerized mounts, Celestron's EdgeHD optical tubes offer true astrograph quality in apertures ranging from 8" to 14". The aplanatic Schmidt-Cassegrain telescope produces a coma-free focal plane more than three times flatter than a standard SCT, as well as dramatically flatter than other competing coma-free designs, for sharp images all the way to the edge of the field of view. Premium StarBright XLT coatings maximize light transmission.

Edge HD Series Key Features

- + EdgeHD Schmidt-Cassegrain optical tubes with StarBright XLT coatings
- + Fastar compatible for f/2 wide-field imaging
- + Primary mirror clutches reduce image shift when tube is rotating around mount
- + Cooling vents allow air to be released from behind the primary mirror
- + 9x50 finderscope and star diagonal
- + Add an EdgeHD .7x Focal Reducer Lens (available for EdgeHD 800, 1100, and 1400 models) to cut your exposure time in half and increase your field of view by 43% while maintaining the same flat-field performance of the native optical design



MODEL	ITEM #	APERTURE	OPTICAL DESIGN	FOCAL LENGTH	EYEPIECES	FINDERSCOPE	DOVETAIL	COATINGS	WEIGHT
EdgeHD 800	91031-XLT	203 mm (8")	Edge HD	2032 mm f/10	40 mm (51x) Plössl	9x50	CG-5	StarBright XLT	14 lbs
EdgeHD 800	91030-XLT	203 mm (8")	Edge HD	2032 mm f/10	40 mm (51x) Plössl	9x50	CGE	StarBright XLT	14 lbs
EdgeHD 9.25	91040-XLT	235 mm (9.25")	Edge HD	2350 mm f/10	23 mm (102x) Luminos	9x50	CGE	StarBright XLT	21 lbs
EdgeHD 1100	91050-XLT	279 mm (11")	Edge HD	2800 mm f/10	23 mm (122x) Luminos	9x50	CGE	StarBright XLT	28 lbs
EdgeHD 1400	91060-XLT	356 mm (14")	Edge HD	3910 mm f/11	23 mm (170x) Luminos	9x50	CGE	StarBright XLT	46 lbs

Learn more about Optical Tube Assemblies by visiting celestron.com/ota

SCHMIDT-CASSEGRAIN

OPTICAL TUBE ASSEMBLIES

Celestron's founder **Tom Johnson** invented the process for mass-producing Schmidt correctors, revolutionizing the consumer telescope market with superior optical quality at an accessible price. Today, Celestron still uses Johnson's signature methods to produce the finest Schmidt-Cassegrain telescopes available. Choose from apertures ranging from 6 to 14 inches, and experience our over 50-year legacy for yourself.

- + Celestron's signature Schmidt-Cassegrain optical tube assemblies are available individually
- + Aluminum tube construction
- + StarBright XLT optical coatings for increased transmission
- + Multiple dovetail options to accommodate your mount



MODEL	ITEM #	APERTURE	OPTICAL DESIGN	FOCAL LENGTH	EYEPIECES	FINDERSCOPE	DOVETAIL	COATINGS	WEIGHT
C6-A (XLT)	91010-XLT	150 mm (6")	Schmidt-Cassegrain	1500 mm f/10	25 mm (60x) Plössl	6x30	CG-5	StarBright XLT	10 lbs
C8-A (XLT)	91024-XLT	200 mm (8")	Schmidt-Cassegrain	2032 mm f/10	25 mm (81x) Plössl	6x30	CGE	StarBright XLT	12 lbs
C8-A (XLT)	91020-XLT	200 mm (8")	Schmidt-Cassegrain	2032 mm f/10	25 mm (81x) Plössl	6x30	CG-5	StarBright XLT	12 lbs
C9.25-A (XLT)	91027-XLT	235 mm (9.25")	Schmidt-Cassegrain	2350 mm f/10	25 mm (94x) Plössl	6x30	CGE	StarBright XLT	20 lbs
C9.25-A (XLT)	91025-XLT	235 mm (9.25")	Schmidt-Cassegrain	2350 mm f/10	25 mm (94x) Plössl	6x30	CG-5	StarBright XLT	20 lbs
C11-A (XLT)	91036-XLT	279 mm (11")	Schmidt-Cassegrain	2800 mm f/10	40 mm (70x) Plössl	9x50	CGE	StarBright XLT	27 lbs
C11-A (XLT)	91067-XLT	279 mm (11")	Schmidt-Cassegrain	2800 mm f/10	40 mm (70x) Plössl	9x50	CG-5	StarBright XLT	27 lbs
C14-A (XLT)*	91038-XLT	355 mm (14")	Schmidt-Cassegrain	3910 mm f/11	40 mm (98x) Plössl	9x50	CGE	StarBright XLT	45 lbs

Learn more about Optical Tube Assemblies by visiting celestron.com/ota

ASTROIMAGING

SKYRIS™

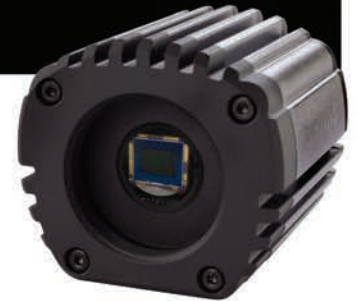
ASTRONOMICAL CCD AND CMOS CAMERAS

Take imaging to the next level with Skyris! Designed and engineered in Germany by The Imaging Source, these cameras are a seamless blend of innovative industrial design and unmatched expertise. Whether you're an advanced user or a beginner, you'll love creating beautiful astroimages with these easy-to-use cameras.

- + Created in conjunction with The Imaging Source, Skyris is a cutting-edge USB 3.0 camera for lunar, solar, and planetary imaging endorsed by the world's top astroimagers, including Christopher Go, Robert Reeves, and Thierry Legault
- + Available in both color and monochrome with three sizes of ultra-sensitive Sony CCD and Aptina CMOS sensors
- + Fast frame rates and shutter speeds capture planets during brief moments of stable air
- + Includes iCap and RegiStax software for easy image capture and automatic stacking
- + Skyris IR-Block Filter, 5-Position 1.25" Filter Wheel, and LRGB Imaging Filter Set also available



Saturn by Christopher Go
taken with Skyris 236



NEXIMAGE®

SOLAR SYSTEM IMAGERS

NexImage 10 is our first NexImage series camera to incorporate USB 3.0 SuperSpeed! With more than ten million pixels coupled with high speed data transmission, the NexImage 10 produces clear and detailed planetary images like never before. With super small 1.67µm pixels, smaller telescopes with shorter focal lengths are still going to yield tremendous planetary detail. It's one of the best valued, high-res USB 3 planetary imaging cameras on the market.

- + A great way to get started with astroimaging, especially if you live in a light-polluted area
- + One-shot color imagers that replace the 1.25" eyepiece on your telescope and connect to your PC via USB 2.0
- + Contains everything you need to get started, including Celestron's easy-to-use software suite. Simply point your telescope at the Moon or a planet and record a quick video. The software analyzes each frame of video, throws away the fuzzy ones, and perfectly aligns the remaining images. Also works great for imaging the Sun (requires a solar filter)



Jupiter by Lance Lucero
taken with NexImage 10



ACCESSORIES



Luminos Eyepieces

Super wide 82° field of view in both high power and low power models. Parfocal, fully multi-coated optics. Sizes: 7 mm - 1.25", 10 mm - 1.25", 15 mm - 1.25", 19 mm - 2", 23 mm - 2"



X-Cel LX Eyepieces

Wide field of view at 60° with 6-element fully multi-coated optics and parfocal lens requires little to no focusing when changing from low to high power. Sizes: 2.3 mm, 5 mm, 7 mm, 9 mm, 12 mm, 18 mm and 25 mm.



Omni Eyepieces

50° apparent field of view, perfect for the Moon, planets, and a plethora of deep-sky objects. The premium four-element optical set is finished with multiple layers of high-transmission coatings for clear, sharp images. The edges of the optics are blackened for increased contrast. Available for 1.25" format in 4 mm, 6 mm, 9 mm, 12 mm, 32 mm, 40 mm



Barlow Lenses

Get additional magnification for your favorite Celestron eyepieces! Ideal for zooming in on planetary details, lunar landscapes, and rich star fields.



2" Mirror Diagonal with XLT Coatings

There are few telescope accessories that work as hard or matter as much as a diagonal! An integral part of the optical chain, a good diagonal can make a big difference in the quality of the image you see. A 2" diagonal is required if you want to use 2" eyepieces when observing with your telescope. Upgrade to 2" and see what you've been missing!
#93527



Accessory Kits

Packed with everything you need for your next observing session, our accessory kits are a great way for new amateur astronomers to grow their accessory collection quickly. Each kit includes an assortment of eyepieces and filters. Our most popular kits include a Barlow lens and premium aluminum carrying case!

- + AstroMaster Accessory Kit # 94307
- + PowerSeeker Accessory Kit # 94306
- + Observer's Accessory Kit # 94308
- + 1.25" Eyepiece and Filter Kit # 94303
- + 2" Eyepiece and Filter Kit # 94305
- + FirstScope Accessory Kit #21024-ACC



Reducer Lens .7x EdgeHD

The EdgeHD .7x Focal Reducer Lens increases the field of view of your OTA by 43% to better capture wide field images and makes your EdgeHD one full f-stop faster, reducing your exposure time by one-half to capture the same brightness of the object. All this while maintaining a similar flat-field performance as native EdgeHD optical design.

- EdgeHD 800 Reducer Lens #94242
- EdgeHD 1100 Reducer Lens #94241
- EdgeHD 1400 Reducer Lens #94240



Polar Axis Finderscope For CGX & CGX-L

The optional Polar Axis Finderscope for the CGX series provides an easy, straightforward way to polar align your mount. The Polar Finderscope includes a dovetail base bracket that attaches to the CGX. The finder bracket itself can be removed from the dovetail for storage. Designed specifically for CGX and CGX-L, the bracket angle is adjustable to accommodate the most accessible viewing angle for your setup.
#94239



PowerTank Lithium

Power up your computerized telescope with the all new PowerTank Lithium! Smaller, lighter, safer, and easier to maintain than older battery designs. USB out ports keep your personal electronic devices charged and the onboard red or bright white LED panel keeps your outdoor adventures illuminated.

- + Up to 2000 charge cycles – four times more than lithium-ion & 7 times more than sealed lead-acid designs.
- + Un-recharged shelf life of up to 10 years – 3 times better than lithium-ion and 10 times better than sealed lead-acid designs
- + Environmentally friendly – Does not use toxic heavy metals

#18771



StarSense AutoAlign

The same award-winning alignment technology found in our SkyProdigy telescopes is now available as an accessory for any compatible Celestron computerized telescopes! Give your favorite telescope, from a NexStar SE to a CGE Pro 1400, the ease and power of automatic alignment and instant navigation. Advanced users can add up to 10 calibration stars for Celestron's most accurate alignment possible.

#94005



Optical Tube Carrying Case

Safely store your Schmidt-Cassegrain or EdgeHD optical tube in a custom-molded EVA carrying case. Hard yet flexible, the case protects the tube from bumps and scratches, and even features a zippered storage pocket for accessories. Larger cases include wheels and a retractable handle for easy transport.

- OTA Carrying Case - (4/5/6/8 SCT OR EDGEHD) #94003
- OTA Carrying Case - (8/9.25/11 SCT OR EDGEHD) #94004



SkyPortal WiFi Module

Control your telescope with your iPhone or iPad using the Skyportal WiFi Module. Tap any object on the screen, and your compatible Celestron computerized telescope automatically slews to it.

#93973



HD Pro Wedge

Celestron's HD Pro Wedge is designed to support our fork mounted Schmidt Cassegrain Telescopes up to 11". The HD Pro Wedge provides a heavy duty, stable platform that is perfect for astroimaging and guarantees minimal vibration.

#93664



NexStar Evo Wedge

Our popular NexStar SE and our new NexStar Evolution telescopes are great for astrophotography, however an EQ wedge is necessary to take longer exposure images, or to advance further and use an autoguider. The new Wedge for NexStar Evolution and SE 6/8 mounts turns our venerable single fork arm telescopes into portable astroimaging powerhouses.

#93665



FREE SkyPortal App

Celestron's newest planetarium app (co-developed by Simulation Curriculum) is an astronomy suite that redefines how you experience the night sky. Explore the Solar System, 120,000 stars, over 200 star clusters, nebulae, galaxies, and dozens of asteroids, comets, and satellites—including the ISS. SkyPortal includes everything you need to experience the night sky in an exciting new way. Upgrade to SkySafari Plus and SkySafari Pro for more features.

Best of all, you can even control and automatically align your compatible Celestron telescope from your device using StarSense and WiFi technology.





An award-winning legacy brand for over 50 years, Celestron has grown to become the world's leading telescope maker and enjoys brand-name recognition among serious amateur astronomers for superior optics, outstanding design, and innovative technology. Celestron's passion for astronomy stands superior to all competitors as we strive to make our telescopes easier to use while maintaining the high standards we set for our quality products.

We are committed to the latest product designs and innovative engineering, backed by our longstanding ability to manage and control all aspects of the design-to-market process. Celestron's in-house staff of engineers, industrial designers, and optical experts are consistently challenging themselves to improve and refine our existing products, as well as develop bold new product designs that feature the latest innovations for our customers.

Celestron also develops a wide range of exciting products and technologies that enhance the science, outdoor, and educational markets. Continuous product improvement, award-winning innovations, and design excellence ensure that all products we create inspire a sense of wonder, knowledge, and fun in our customers and throughout our company.

© 2016 Celestron | 2835 Columbia Street Torrance, CA 90503 U.S.A. | 800. 421. 9649

Celestron Global Ltd., Unit 2 Transigo, Gables Way, Thatcham RG18 4JZ United Kingdom | +44 (0) 1184 671200

The photographs appearing in this catalog are for graphic illustration purposes only and do not represent objects or subjects viewed or photographed using the products described. All items designated TM or ® are trademarks or registered trademarks Celestron or the specific companies designated.

Product designs and specifications are subject to change or modification without prior notification.

Products designed and intended for those 14 years of age or older

#93895-16