
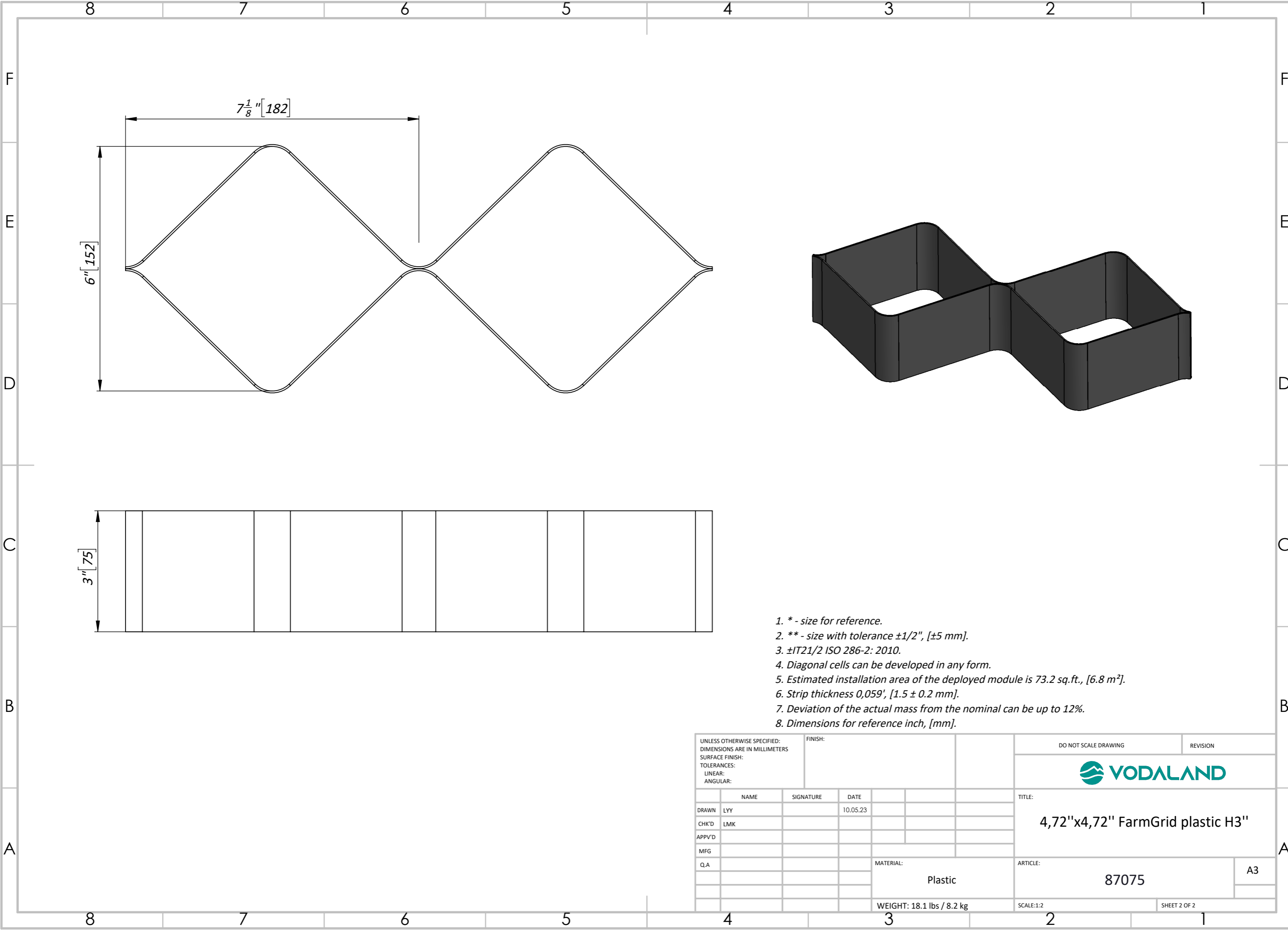


Top view of the mounted module

1. \* - size for reference.
2. \*\* - size with tolerance  $\pm 1/2"$ , [ $\pm 5$  mm].
3.  $\pm IT21/2$  ISO 286-2: 2010.
4. Diagonal cells can be developed in any form.
5. Estimated installation area of the deployed module is 73.2 sq.ft., [6.8 m<sup>2</sup>].
6. Strip thickness 0,059', [1.5  $\pm$  0.2 mm].
7. Deviation of the actual mass from the nominal can be up to 12%.
8. Dimensions for reference inch, [mm].

UNLESS OTHERWISE SPECIFIED: DIMENSIONS ARE IN MILLIMETERS				FINISH:		DO NOT SCALE DRAWING		REVISION	
SURFACE FINISH:									
TOLERANCES:									
LINEAR:						TITLE: 4,72"x4,72" FarmGrid plastic H3"			
ANGULAR:						ARTICLE: 87075			
DRAWN LYY		SIGNATURE		DATE 10.05.23		MATERIAL: Plastic		A3	
CHK'D LMK						WEIGHT: 18.1 lbs / 8.2 kg		SCALE: 1:50	
APPV'D						SHEET 1 OF 2			
MFG									
QA									



- 1. \* - size for reference.
- 2. \*\* - size with tolerance  $\pm 1/2"$ , [ $\pm 5$  mm].
- 3.  $\pm IT21/2$  ISO 286-2: 2010.
- 4. Diagonal cells can be developed in any form.
- 5. Estimated installation area of the deployed module is 73.2 sq.ft., [6.8 m<sup>2</sup>].
- 6. Strip thickness 0,059', [1.5  $\pm$  0.2 mm].
- 7. Deviation of the actual mass from the nominal can be up to 12%.
- 8. Dimensions for reference inch, [mm].

UNLESS OTHERWISE SPECIFIED: DIMENSIONS ARE IN MILLIMETERS SURFACE FINISH: TOLERANCES: LINEAR: ANGULAR:				FINISH:		DO NOT SCALE DRAWING		REVISION	
						TITLE: <b>4,72"x4,72" FarmGrid plastic H3"</b>			
						ARTICLE: <b>87075</b>		A3	
				MATERIAL: <b>Plastic</b>		SCALE:1:2		SHEET 2 OF 2	
				WEIGHT: 18.1 lbs / 8.2 kg					
DRAWN LYY		SIGNATURE		DATE 10.05.23					
CHK'D LMK									
APPV'D									
MFG									
Q.A									