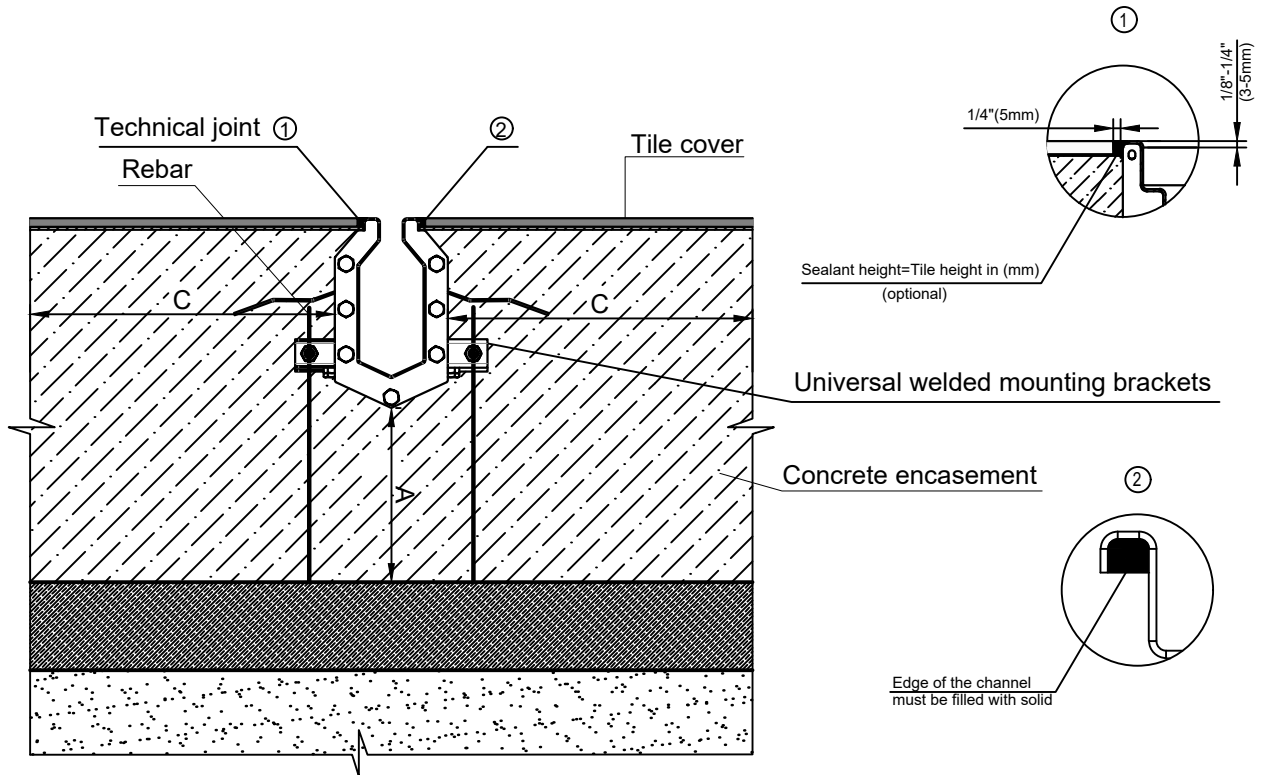


Installation of the Stainless steel pre slope trench drain system into a tile cover



Recommended parameters of the Concrete encasement

Parameter	Load class		
	Class A	Class B	Class C
Concrete encasement depth (A), in	4"(100mm)	4"(100mm)	6"(150mm)
Concrete encasement width (C), in	4"(100mm)	4"(100mm)	6"(150mm)

Notes

1. Drainage system should be installed in accordance with the manufacturer's instructions and recommendations.
2. The manufacturer's technical consultation may be required to determine the correct load class.
3. The scheme of installation of the drainage system is not normative, it is more of a recommendatory nature.
4. The finished level of the concrete clamp (or adjacent coating) should be 1/8-3/16 "(3-5 mm) above the top of the channel edge.
5. The poured concrete is used to arrange the concrete clamp and should be vibrated to remove air pockets.
6. To compensate for temperature effects and deformation fluctuations of the adjacent coating, it is recommended to arrange temperature expansion joints along the edge of the channel.
7. Technological seam can be made with a special polyurethane sealant, as shown in scheme 1.
8. Follow the updates to the instructions and recommendations in the website Vodaland.

UNLESS OTHERWISE SPECIFIED:
DIMENSIONS ARE IN MILLIMETERS
SURFACE FINISH:
TOLERANCES:
LINEAR:
ANGULAR:

FINISH:

DEBURR AND
BREAK SHARP
EDGES

DO NOT SCALE DRAWING

REVISION



NAME	SIGNATURE	DATE			
DRAWN					
CHKD					
CHKD					
APPVD					
			MATERIAL: Stainless steel		

<p>Stainless steel pre slope trench drain system Tile cover</p>	
	ARTICLE: