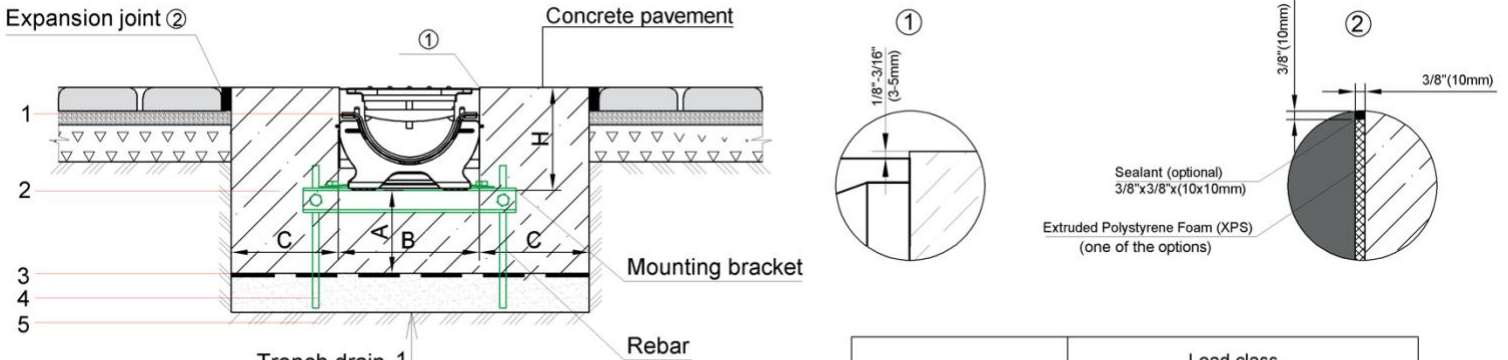
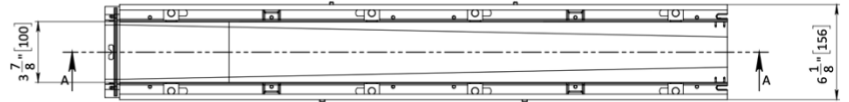
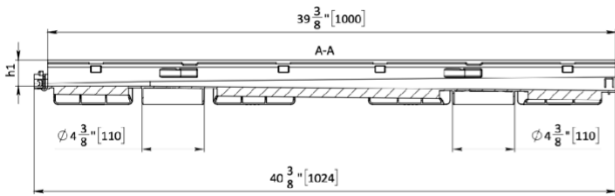


4" (100 mm) PLASTIC CHANNEL TRENCH DRAIN SLOPED



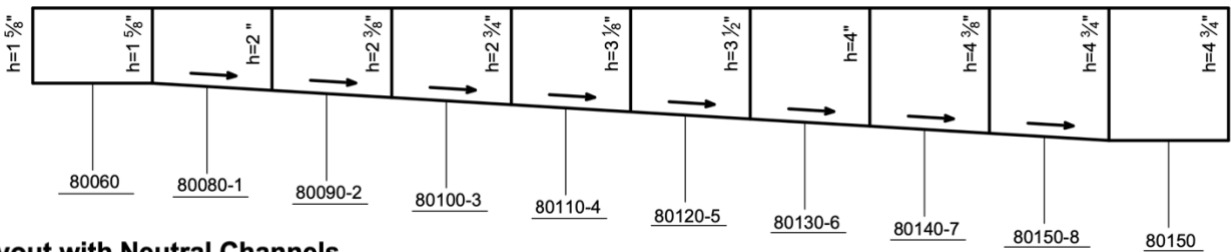
- Trench drain 1
- Concrete encasement 2
- Seal foil (optional) 3
- Bedding layer h=4" (100mm) 4
- Soil 5

Parameter	Load class		
	Class A	Class B	Class C
Concrete encasement depth (A), in (mm)	4" (100mm)	4" (100mm)	6" (150mm)
Concrete encasement width (C), in (mm)	4" (100mm)	4" (100mm)	6" (150mm)



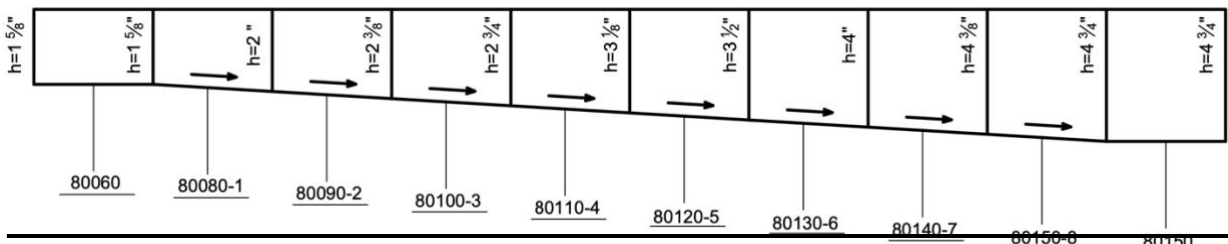
Pre Slope layout

Channel	80080-1	80090-2	80100-3	80110-4	80120-5	80130-6	80140-7	8010150-8
H1 Shallow inv.	1 5/8" (42 mm)	2" (50 mm)	2 3/8" (60 mm)	2 3/4" (70 mm)	3 1/8" (80 mm)	3 1/2" (90 mm)	4" (100 mm)	4 3/8" (110 mm)
H2 Deep inv.	2" (50 mm)	2 3/8" (60 mm)	2 3/4" (70 mm)	3 1/8" (80 mm)	3 1/2" (88 mm)	4" (100 mm)	4 3/8" (110 mm)	4 3/4" (120 mm)
External Depth	3 1/8" (80 mm)	3 1/2" (90 mm)	3 7/8" (100 mm)	4 3/8" (110 mm)	4 3/4" (120 mm)	5 1/8" (130 mm)	5 1/2" (140 mm)	5 7/8" (150 mm)



Pre Slope layout with Neutral Channels

Channel	8050-M1	80080-1	80090-2	80100-3	80110-4	80120-5	80130-6	80140-7	8010150-8	8000-M UA
H1 Shallow inv.	1 5/8" (42 mm)	1 5/8" (42 mm)	2" (50 mm)	2 3/8" (60 mm)	2 3/4" (70 mm)	3 1/8" (80 mm)	3 1/2" (90 mm)	4" (100 mm)	4 3/8" (110 mm)	4 3/4" (120 mm)
H2 Deep inv.	1 5/8" (42 mm)	2" (50 mm)	2 3/8" (60 mm)	2 3/4" (70 mm)	3 1/8" (80 mm)	3 1/2" (88 mm)	4" (100 mm)	4 3/8" (110 mm)	4 3/4" (120 mm)	4 3/4" (120 mm)
External Depth	2 3/8" (60 mm)	3 1/8" (80 mm)	3 1/2" (90 mm)	3 7/8" (100 mm)	4 3/8" (110 mm)	4 3/4" (120 mm)	5 1/8" (130 mm)	5 1/2" (140 mm)	5 7/8" (150 mm)	5" 7/8" (150 mm)



REVISED: 2022

NOTES:

1. REFER TO VODALAND-USA WEBSITE FOR DETAILED INSTALLATION INSTRUCTIONS AND SCHEMES (CATALOGUES SECTION).
2. SPECIFIER IS RESPONSIBLE FOR CONCRETE ENCASEMENT AND REINFORCING BASED UPON APPLICATION AND LOCAL CODES.
3. EXPANSION AND CONTRACTION CONTROL JOINTS AND REINFORCEMENT ARE RECOMMENDED TO PROTECT CHANNEL AND CONCRETE SURROUND. ENGINEERING ADVICE MAY BE REQUIRED.
4. THE FINISHED LEVEL OF THE CONCRETE SURROUND MUST BE APPROX. 1/8"-1/4" (3-5 mm) ABOVE THE TOP OF THE CHANNEL EDGE.

SPECIFICATION: 4" BASIC PLASTIC TRENCH DRAIN SYSTEM SHALL BE 39.4" (1000 mm) LONG AND THE NOMINAL CLEAR OPENING SHALL BE 4" (100 mm) WITH 6.3" (160 mm) OVERALL WIDTH. CHANNELS SHALL BE MANUFACTURED FROM UV STABILIZED 100% RECYCLED POLYPROPYLENE. UNITS SHALL HAVE A MALE-TO-FEMALE INTERLOCKING JOINTS THAT WILL NOT SEPARATE DURING THE INSTALLATION. CHANNELS SHALL HAVE A RADIUS SELF CLEANING BOTTOM WITH A MANNING'S COEFFICIENT OF 0.009 AND 1% BUILT-IN SLOPE.

THE COMPLETE DRAINAGE SYSTEM SHALL BE BY VODALAND-USA. ANY DEVIATION OR PARTIAL SYSTEM DESIGN AND/OR IMPROPER INSTALLATION WILL VOID ANY AND ALL WARRANTIES PROVIDED BY VODALAND-USA.

SPECIFY APPROPRIATE OPTIONS:

GRATE OPTIONS:

- ___ 20303 Cast Iron Slotted Grating
- ___ 20901 Stainless Steel A Class Grating (STANDARD)
- ___ 20901-M Stainless Steel A Class Grating Standard
- ___ 2075 Brass Grating
- ___ 20701-M Brass Grating (1 Meter)
- ___ 20403 Cast Iron Mesh Grating
- ___ 20101-M Galvanized Steel Grating (New Design)
- ___ 2019 Galvanized Cover with bumps (SOLID)
- ___ 20902 Stainless Steel B Class Mesh Grating
- ___ 2020-UA B Class Galvanized Stamped Steel Grating
- ___ 20601-M Copper Grating (New Des)
- ___ 20403-ADA Cast Iron ADA Grating
- ___ 20801 Plastic Grating
- ___ 2030351 Cast Iron Slotted Grating Wave
- ___ SSGH-B100A Stainless Steel ADA / HEEL PRO Grate
- ___ SSGH-B100A Galvanized Steel ADA / HEEL PRO Grate
- ___ 2010-B ADA / Heel Proof Galvanized Steel Grating
- ___ 20601 Copper Grating
- ___ 2090-B Stainless Steel A Class Grating SLT
- ___ 20901-B Stainless Steel A Class / Heel Proof Grating
- ___ 20101 Galvanized Steel Grating

SLOT GRATE OPTIONS:

- ___ 2017-1T-100 Galvanized Slot Grate - Regular
- ___ 2097-1T-60-100 Slot Grating with Adjustable Height
- ___ 2017-1T-25 Galvanized Micro Slot Grate
- ___ 2017-1L-100 Galvanized Wall Slot Grate
- ___ 2097-1T-100 Stainless Steel Slot Grate - Regular
- ___ 2097-1L-100 Stainless Steel Wall Slot Grate
- ___ 2097-1T-25 Stainless Steel Micro Slot Grate

ADDITIONAL OPTIONS:

- ___ 8370.9-CH 12x12 Basin w/ Basket & Partitions with 8370-N 12x12 Riser / Extension
- ___ 8472.9 16X16 Catch Basin w/Basket
- ___ 8472.1.9 16x16 Catch Basin CORNER (90 Degree) w/Basket
- ___ 6104 Installation Brackets Modernized
- ___ 63012-M End Caps Closed for channels 8020-M (4X4)

Vodaland-USA

•3120 Riverport Tech Center Dr Maryland Heights MO,63043•Phone: (314)717-1551•Email:info@vodaland-usa.com

