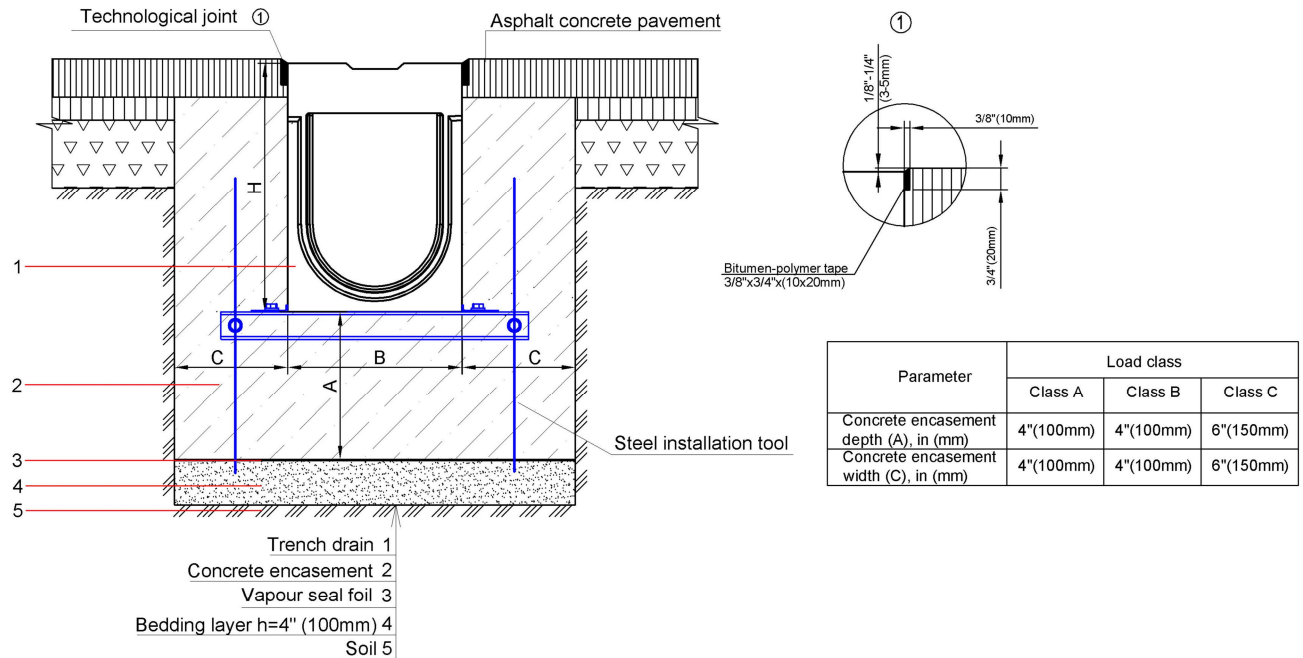


**4" (100mm) POLYMER CONCRETE SPORT CHANNEL**



**NOTES:**

1. REFER TO VODALAND-USA WEBSITE FOR DETAILED INSTALLATION INSTRUCTIONS AND SCHEMES.
2. SPECIFIER IS RESPONSIBLE FOR CONCRETE ENCASEMENT AND REINFORCING BASED UPON APPLICATION AND LOCAL CODES.
3. EXPANSION AND CONTRACTION CONTROL JOINTS AND REINFORCEMENT ARE RECOMMENDED TO PROTECT CHANNEL AND CONCRETE SURROUND. ENGINEERING ADVICE MAY BE REQUIRED.
4. THE FINISHED LEVEL OF THE CONCRETE SURROUND MUST BE APPROX. 1/8"-1/4" (3-5mm) ABOVE THE TOP OF THE CHANNEL EDGE.

**SPECIFICATION:** CHANNELS SHALL BE 39.4" (1000mm) LONG AND THE NOMINAL CLEAR OPENING SHALL BE 4" (100mm) WITH 5.5" (140mm) OVERALL WIDTH AND NEUTRAL 0% BUILT IN SLOPE. CHANNELS SHALL HAVE A MALE-TO-FEMALE INTERLOCKING JOINTS. EACH UNIT WILL BE RATED LOAD CLASS C250 PER EN1433 LOAD SPECIFICATION.

**MATERIALS:** 4" SPORT CHANNEL SHALL BE MANUFACTURED FROM CORROSION RESISTANT POLYMER CONCRETE WITH CAST-IN GALVANIZED STEEL EDGE RAILS.

COMPRESSIVE STRENGTH:	APPROX. 14,000 PSI
FLEXURAL STRENGTH:	APPROX. 4,000 PSI
TENSILE STRENGTH:	APPROX. 1,500 PSI
WATER ABSORPTION:	0.05%
FROST PROOF:	YES
DILUTE ACID AND ALKALI RESISTANT:	YES
SALT PROOF:	YES

THE COMPLETE DRAINAGE SYSTEM SHALL BE BY VODALAND-USA ANY DEVIATION OR PARTIAL SYSTEM DESIGN AND/OR IMPROPER INSTALLATION WILL VOID ANY AND ALL WARRANTIES PROVIDED BY VODALAND-USA.

**REVISED: 2022**