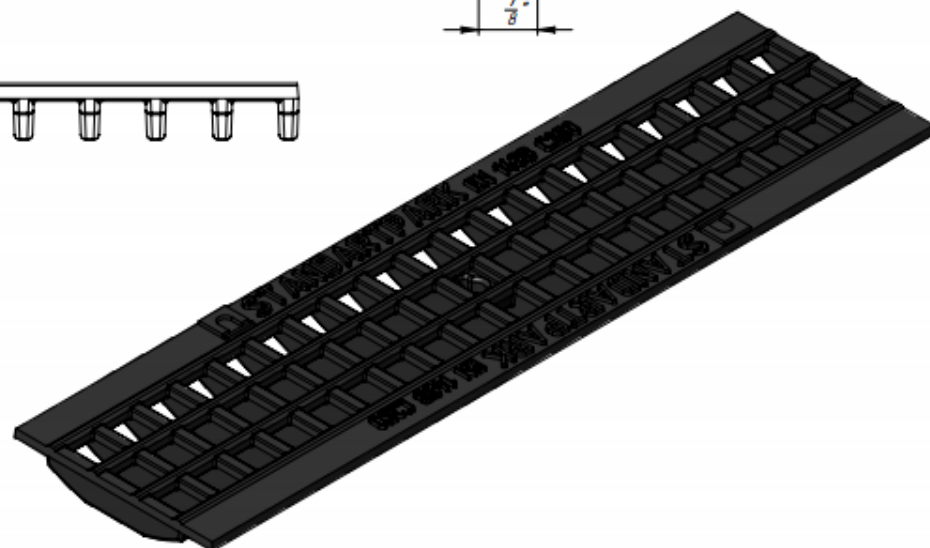
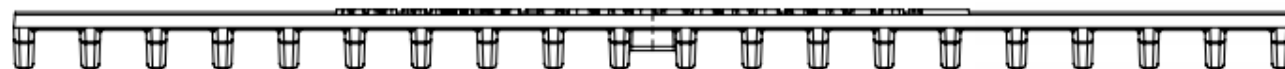
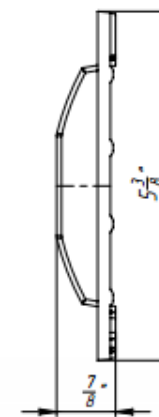


Ductile Cast Iron Grating 4" (Mesh)

19 $\frac{5}{8}$ "

STANDARTPARK EN 1433 C250

STANDARTPARK EN 1433 C250



- 1. Area of water intake slots 33,2 sq in
- 2. Deviation of the actual weight of the nominal can be up to 12%

					Ductile Cast Iron Grating 4" (Mesh)			Art.	20403	
Rev.	Sheet	Doc. No.	Sign.	Data	NP-DG 20403			Let.	Weight (lb)	Scale
				04.08.16	Load Classes A-C				6.97	1:2
					Ductile Cast Iron (powder painting)			Sheet	Sheets 1	

Primary Usage

Reference No.

Sign and date

Copy inv. No.

Repl. Inv. No.

Sign and date

Orig. Inv. No.