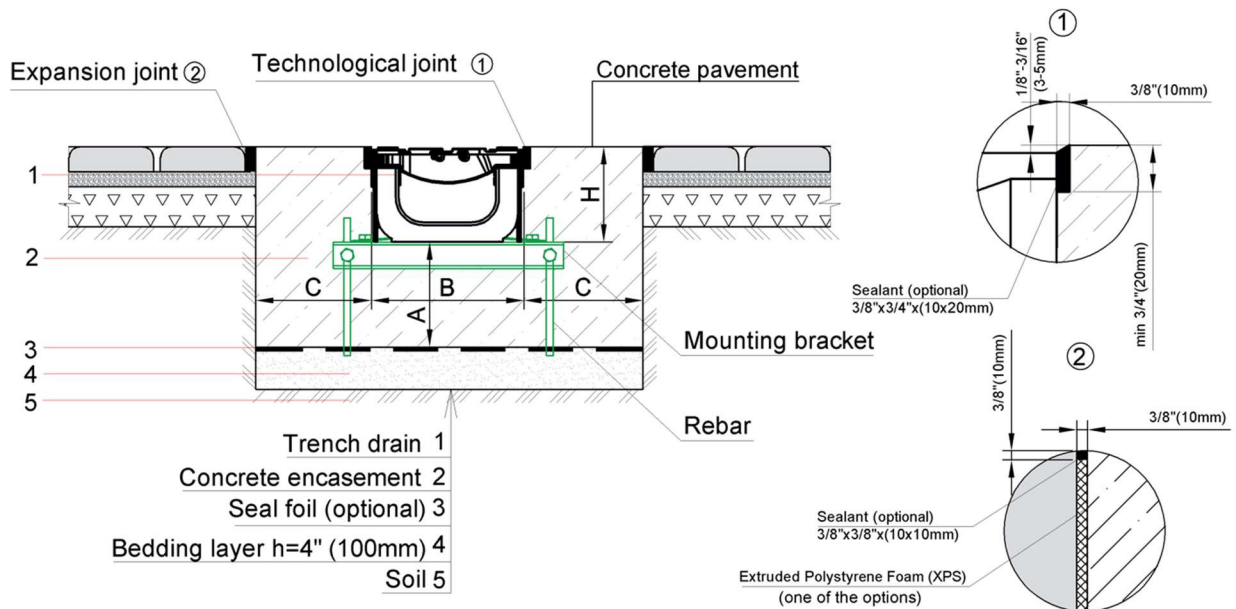
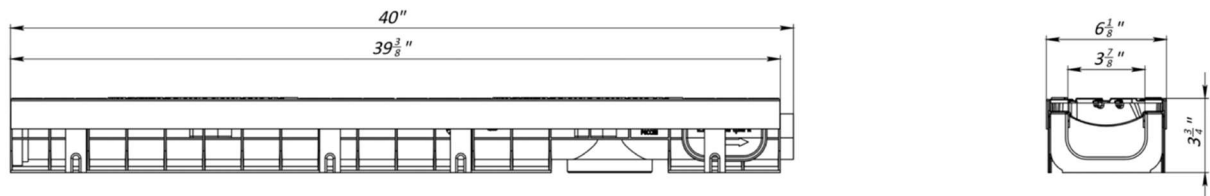


4" X 3" (200 mm x 150 mm) PRO CHANNEL



Parameter	Load class				
	Class A	Class B	Class C	Class D	Class E
Concrete encasement depth (A), in (mm)	4"(100mm)	4"(100mm)	6"(150mm)	8"(200mm)	10"(250mm)
Concrete encasement width (C), in (mm)	4"(100mm)	4"(100mm)	6"(150mm)	8"(200mm)	8"(200mm)



NOTES:

1. REFER TO VODALAND-USA WEBSITE FOR DETAILED INSTALLATION INSTRUCTIONS AND SCHEMES (CATALOGUES SECTION).
2. SPECIFIER IS RESPONSIBLE FOR CONCRETE ENCASUREMENT AND REINFORCING BASED UPON APPLICATION AND LOCAL CODES.
3. EXPANSION AND CONTRACTION CONTROL JOINTS AND REINFORCEMENT ARE RECOMMENDED TO PROTECT CHANNEL AND CONCRETE SURROUND. ENGINEERING ADVICE MAY BE REQUIRED.
4. THE FINISHED LEVEL OF THE CONCRETE SURROUND MUST BE APPROX. 1/8"-1/4" (3-5 mm) ABOVE THE TOP OF THE CHANNEL EDGE.

REVISED: 2022

SPECIFICATION: 4"X3" PRO PLASTIC TRENCH DRAIN SYSTEM SHALL BE 39.4" (1000 mm) LONG AND THE NOMINAL CLEAR OPENING SHALL BE 4" (100 mm) WITH 6 1/4" (160 mm) OVERALL WIDTH. CHANNELS SHALL BE MANUFACTURED FROM UV STABILIZED 100% RECYCLED POLYPROPYLENE. UNITS SHALL HAVE A MALE-TO-FEMALE INTERLOCKING JOINTS THAT WILL NOT SEPARATE DURING THE INSTALLATION. CHANNELS SHALL HAVE A RADIUSED SELF CLEANING BOTTOM WITH A MANNING'S COEFFICIENT OF 0.009 AND NEUTRAL 0% BUILT-IN SLOPE. EACH UNIT WILL BE PROVIDED WITH STANDARD DUCTILE CAST IRON GRATES FASTENED TO GALVANIZED STEEL EDGE RAILS AND RATED LOAD CLASS E600 PER EN1433 LOAD SPECIFICATION.

THE COMPLETE DRAINAGE SYSTEM SHALL BE BY VODALAND-USA. ANY DEVIATION OR PARTIAL SYSTEM DESIGN AND/OR IMPROPER INSTALLATION WILL VOID ANY AND ALL WARRANTIES PROVIDED BY VODALAND-USA.

SPECIFY APPROPRIATE OPTIONS:

ADDITIONAL OPTIONS:

- 6831 END CAP - SHALLOW
- 6154 INSTALLATION BRACKETS