

SPECIFICATIONS

Monitor

LCD profile widescreen ratio	16:9 (4.3")
View angle (U/D/L/R)	50/70/70/70
Resolution	480 x 3 (RGB) x 272
Brightness (cd/m2)	400
Contrast ratio	500:1
Response time (ms) (at 25°C).....	15
Power requirement	12V/24V DC
Power consumption.....	≤5W
Operating temperature range.....	-20°C to 70°C
Storage temperature range.....	-30°C to 80°C
Dimensions (mm).....	280 (L) x 91 (W) x 30 (D)
Weight (approx.) (gm).....	580 (including bracket)

Camera

Image sensor:.....	CMD Digital-Clarity Active Pixel Image
Video system:.....	NTSC
Resolution:.....	480 TV Line
View angle:.....	160 degree
Working voltage:.....	9-16 V DC

Waterproof

Accessories

5m Y cable

Silicon tape

SERVICE

Do not attempt to service the unit yourself, as opening or removing covers may expose you to dangerous voltage or other hazards. Refer all servicing to qualified service personnel.

To obtain service: Contact ESCORT (800-543-1608) to obtain a Return Authorization Number. Properly pack your product and include: your name, complete return address, written description of the problem with your product, daytime telephone number, and a copy of the original purchase receipt. Label the outside of the package clearly with your Return Authorization number. Ship the product prepaid (insured, for your protection) to: ESCORT Inc., 5440 West Chester Road, West Chester, OH 45069.

Out-of-warranty repairs:

For out-of-warranty repairs, include prepayment in the amount you were quoted by the ESCORT Customer Service Representative. If your SmartSite has been damaged, abused, or modified, the repair cost will be calculated on a parts-and-labor basis. If it exceeds the basic repair charge, you will be contacted with an estimate. If the additional payment is not received within 30 days (or if you notify us that you do not wish to have your SmartSite repaired at the price quoted), the unit will be returned without repair. Payment can be made by check, money order, or credit card.

ESCORT Inc.
5440 West Chester Road
West Chester OH 45069

800.433.3487
www.EscortInc.com

©2011 ESCORT Inc. ESCORT® and SmartSite™ are trademarks of ESCORT Inc.
Features, specifications and prices subject to change without notice.

ESCORT One-Year Limited Warranty

What this warranty covers: ESCORT warrants your product against all defects in materials and workmanship.

For how long: One (1) year from the date of the original purchase

What we will do: ESCORT, at our discretion, will either repair or replace your product free of charge.

What we will not do: ESCORT will not pay shipping charges that you incur for sending your product to us.

What you must do to maintain this warranty: Show original proof of purchase from an authorized ESCORT dealer.

Warranty exclusions: Warranty does not apply to your product under any of the following conditions:

- The serial number has been removed or modified.

- Your product has been subjected to misuse or damage (including water damage, physical abuse, and/or improper installation).

- Your product has been modified in any way.

- Your receipt or proof of purchase is from a non-authorized dealer or Internet auction site, including E-bay, U-bid, or other non-authorized resellers.

- You are not the original purchaser of the product from an authorized dealer or did not receive it as a gift from the original purchaser of product from an authorized dealer.

FCC ID: S20711281303-EF. This equipment has been tested and found to comply with the limits for a Class A digital device, pursuant to part 15 of the FCC rules. These limits are designed to provide reasonable protection against harmful interference when the equipment is operated in a commercial environment.

This equipment generates, uses, and can radiate radio frequency energy and, if not installed and used in accordance with this user manual, may cause harmful interference to radio, in which case, the user will be required to correct the interference at their own expense.

Any changes or modifications in construction of this device that are not expressly approved by the party responsible for compliance could void the user's authority to operate the equipment.



SmartSite™

REARVIEW CAMERA SYSTEM

Installation

Features

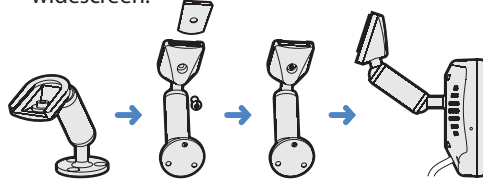
- The SmartSite 4.3" color LCD mirror is designed for vehicle rearview monitoring.
- Combines normal mirror image and reversing rear camera image.
- Three screen set options: left, middle, or right side of mirror monitor.
- SmartSite attaches in place of most originally equipped factory rearview mirrors.
- Built-in interface function can support up to two cameras.
- Automatically displays reverse camera view when reverse gear is engaged.
- Reversing function camera always has highest priority.
- Mirror can be installed in both 12 volt and 24 volt vehicles.
- Special anti-glare treatment.
- Includes high/low voltage and short circuit protection.

Safety and Installation Guidelines

- Secure the monitor in such a way that it cannot become loose under any circumstance (sudden braking, accidents) and cause injury to the occupants of the vehicle.
- Do not attach the mirror in the area that may be used by an airbag, as this could cause injury if the airbags are triggered.
- The picture quality can be impaired in the vicinity of electromagnetic fields. For this reason, do not mount the monitor near loudspeakers.
- Do not drop, open, submerge or spill liquid on the monitor.
- Do not operate the monitor if the housing has been damaged.
- Do not press on the LCD display.

Mirror Monitor Installation

- 1** Remove the factory rearview mirror from the vehicle.
- 2** Adjust the angle of the mirror monitor by rotating the ball joint on the bracket to the best position.
- 3** Unscrew the silver lug and slide the mirror monitor onto the original metal lug on the widescreen.



- 4** Fix the screw firmly.

NOTE: If our bracket is not compatible with the vehicle's original mirror, then you have to prepare the glue to either attach the monitor on the windshield or elsewhere. The mirror monitor bracket is detachable.

Power Connection

CAUTION: Before making any connections, disconnect the ground terminal of the vehicle battery to avoid short circuits.

- 1** Connect the RED wire to a positive (12V or 24V) power terminal, which is energized with the ignition key in the accessory position.
- 2** Connect the BLACK wire to a suitable negative connection point on the vehicle.
- 3** Connect the GREEN wire (CAM 1 trigger) to the switched power output terminal of the "R" (reverse) gear. The CAM 1 trigger is always in priority.

NOTE: The plugs should be fully inserted into the connectors or jacks. A loose connection may cause malfunction of the unit.

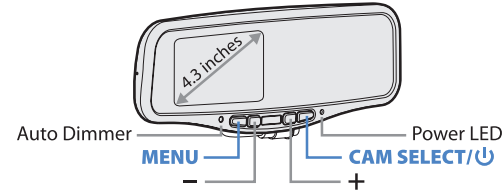
- Power Input Lead (Green - Reverse)
- Power Input Lead (Red - DC in)
- Ground Wire (Black)
- Connect To CAM 1 (V1 Reversing Image)
- Connect To CAM 2 (V2 Normal Image)

Controls and Operation

Mirror Monitor Operation

When you turn the ignition to the accessory or ON position, power is supplied and the front LED light will turn red. No image will be displayed on the monitor. You must press CAM SELECT/⏻ or engage reverse gear to activate the camera.

Mirror Monitor Controls



CAM SELECT/⏻

Press button to select CAM 1 or CAM 2. Or, hold for more than 2 seconds to power off the monitor (standby). Press again to power on.

MENU

Contrast Control

To adjust the display contrast, press MENU, choose CONTRAST on the screen display, and press + or - to increase or decrease contrast.

Brightness Control

To adjust the display brightness, press MENU, choose BRIGHTNESS on the screen display, and press + or - to increase or decrease brightness.

Color Control

To adjust the display color, press MENU, choose COLOR on the screen display, and press + or - to increase or decrease color contrast.

Normal/Mirror Image Setting

If your camera and control box has a Normal/Mirror function, you can change these settings for CAM 1 and CAM 2 separately.

Press MENU, tap MIR1 OFF on the screen display and press + or - to select mirror or normal image for CAM 1. You can set the CAM 2 image in the same way.

Park (on)

To adjust the settings for the parking assist line (which helps you judge distance while in reverse), press MENU, tap Park (on) on the screen display, and press + or - to activate it.

The parking assist line only appears when the reverse gear is engaged. It can be adjusted horizontally by pressing + or - to your preferred height for the current parking conditions. The setting is saved in memory.

Cleaning and Maintenance

- If your vehicle has been parked in direct sunlight allow the monitor to cool off before operating.
- Unplug or power off before cleaning. Clean the monitor with a slightly damp soft cloth, using only mild household detergent.
- Do not use liquid or aerosol cleaners, or strong solvents to clean the monitor as they might damage the finish.
- Do not block or cover the holes on the monitor. Their function is for ventilation to keep the unit from overheating.
- Do not push objects of any kind into the monitor through the ventilation holes, as this may result in fire or electric shock.
- Do not submerge the monitor or spill any kind of liquid on it.

Black 13 pin Male to Monitor

