

Controls & Features

Mark Location (MRK)
To mark a location for future alerts, press MRK twice, then VOL + or - to select the type of marker, then MRK again to confirm. Press twice while receiving marker alert to unmark

Magnetic StickyCup Mount
Simply slide ESCORT MAX 360 on or off mounting bracket

Volume
Press and hold + or - to adjust volume

Power
Press to turn MAX 360 on or off

Sensitivity (SEN)
Press to adjust detector sensitivity (Highway, Auto, Auto NoX)


Brightness (BRT)
Press to adjust display brightness (Min, Med, Max, Auto, Dark)

Over Speed Alert/Posted Speed Limit
Over Speed Alert setting that can be adjusted in Preferences. Displays **Bluetooth** icon when paired to phone, and posted speed limit for current location when connected to ESCORT Live

Threat-Direction Arrows
Report the direction an alert is coming from

Alert Area
ESCORT MAX 360 offers seven different settings for displaying front and rear alerts. See Preferences for details

Current Speed
Shows battery voltage when Speed Display is off



Over Speed Indicator

Bluetooth Icon

Posted Speed Limit

Settings & Preferences

Press and hold the BRT and SEN buttons to access Preferences. To exit Preferences, simply wait a few seconds without pressing a button. A **Completed** message will display confirming your selection(s).

Press BRT to go from one category to the next		Press + or - to change your setting within a category
User Mode	Advanced* Novice	Access and customize all Settings and Preferences Access and customize units and display color, (all other Settings are set to factory defaults) <i>NOTE: Switch to Advance mode to view all Preferences</i>
Pilot Mode	Scanning* Full Word	Scanning Bar with Full Word Full Word: Auto, Auto NoX, or Highway
Arrow Mode	Single* Multiple	Displays blue threat-direction arrow for primary alert band Displays threat-direction arrows for multiple alerts based on Meter Mode settings. Front radar alert band = blue, Rear radar alert band = red Displays color-coded threat-direction arrows for multiple alert bands, based on Meter Mode settings. X = green, K = blue, Ka/Laser = red
		Band
Display Color	Blue* / Green / Red / Amber	Set color to match your vehicle's dash display
Speed Display	On* Off	Displays current speed Displays battery voltage
Cruise Alert	20 mph* Off / 20-160 mph	Offers double-beep alert tones if traveling below specified speed
Over Speed	70 mph* Off / 20-160 mph	Reminds you when you exceed a specified speed
Meter Mode	Standard Standard FR1* Standard FR2 Spec FR1 Spec FR2 Expert FR Simple	Primary alert band, with bar graph of signal strength Primary alert band, with front and/or rear bar graph(s) of signal strength Primary and secondary alert bands, with front and/or rear bar graph(s) of signal strength Primary alert band, with numeric frequency and front and/or rear bar graph(s) of signal strength Primary and secondary alert bands, with numeric frequencies and front and/or rear bar graph(s) of signal strength Multiple alert bands, with front and/or rear bar graph(s) of signal strength for each Caution (if traveling below Cruise Alert limit) Slow Down (if traveling above Cruise Alert limit)
Tones	Standard* Standard+ Mild	Standard ESCORT alert tones Standard ESCORT alert tones for primary alert and double-beep tones for additional alerts Mild doorbell chime alert tones
AutoMute	Low / Med* / High / Off	Automatically reduces audio to preferred volume during alert

AutoLearn	On* / Off	Automatically stores and locks out false alarms
Units	English* / Metric	Units for distance and speed
Language	English* / Espanol	Language for voice and text
Voice	On* / Off	Voice announcements
GPS Filter	On* / Off	Enables GPS-powered features
AutoPower	Off 1 Hour 2 Hours 4 Hours* 8 Hours	Power turns on or off depending on your vehicle's ignition type (constant power or switched) Powers off automatically after 1 hour Powers off automatically after 2 hours Powers off automatically after 4 hours Powers off automatically after 8 hours <i>NOTE: AutoPower only works with constant power-ignition. If AutoPower is on, the display screen goes blank after 30 minutes to save screen life. Display screen will turn on automatically after you reach 10 mph</i>
Band Enables	Default* Modified	Default Settings for North America Customize the bands you want to monitor
Press SEN to modify band preferences and go from one category to the next		Press + or - to change your setting within a category
X Band K Band Ka Band Ka-POP Laser TSR	On* / Off On* / Off On* / Off On* / Off* On* / Off On* / Off	All laser guns used in North America Automatically rejects traffic-flow-sensor false alarms
Marker Enables	Default* Modified	All markers on Customize the types of locations you want to mark for future reference
Press SEN to modify marker preferences and go from one category to the next		Press + or - to change your setting within a category
Other Redlight Red & Speed Speed Camera Speed Trap Air Patrol	On* / Off On* / Off On* / Off On* / Off On* / Off On* / Off*	Other location Red light camera Red light & speed camera Speed camera Speed trap Known aircraft patrolled areas <i>NOTE: User cannot mark an Air Patrol location</i>
Clear Locations	Marked Lockouts Defender Format	Clear all user-marked locations. Press SEN button to confirm Clear all lockouts. Press SEN button to confirm Clear all DEFENDER Database data. Press SEN button to confirm Clear DEFENDER Database, all markers, and all lockouts. Press SEN button to confirm

Notes for Settings & Preferences
For descriptions of features and functions available when connected to ESCORT Live, visit EscortRadar.com and download the MAX 360 Owner's Manual.

To view serial number and software revision press MRK and MUTE while powering on detector.

To restore MAX 360 to its original factory settings, press and hold MRK and BRT while turning the power on. A **Restored** message will display, acknowledging the reset.

Software Updates
MAX 360's red light and speed camera DEFENDER Database is easily updated using our exclusive detector software tools found on our web site. Firmware, or the operating software for the detector, can also be updated using these tools.

To have access to these updates, please register your MAX 360 at www.EscortRadar.com. Once registered, you will receive email notifications that updates are now available for your database or firmware. To handle your software and DEFENDER updates you need to connect MAX 360 to a computer via USB A / Mini B cable (not included).

Contact Us

Accessories
800.433.3487
EscortRadar.com

Designed in the USA
ESCORT Inc.
5440 West Chester Road
West Chester OH 45069
Sales / Service 800.433.3487
www.EscortRadar.com

©2015 ESCORT Inc. Escort®, MAX 360, Escort Live!™, Defender®, AFR®, TrueLock™, SmartShield®, SpecDisplay™, AutoSensitivity™, ExpertMeter™ and Cincinnati Microwave are trademarks of ESCORT Inc. Manufactured in Canada. Features, specifications and prices subject to change without notice.
FCC NOTE: Modifications not expressly approved by the manufacturer could void the user's FCC granted authority to operate the equipment.
FCC ID: QKLM6. Contains FCC ID: QKLBT1.
This device complies with part 15 of the FCC rules. Operation is subject to the following two conditions: (1) This device may not cause harmful interference, and (2) This device must accept any interference received including interference that may cause undesired operation.

Made for iPhone

For Android

Made for iPhone 5, iPhone 5c, iPhone 5s, iPhone 6, iPhone 6s, iPhone 6 Plus. iPhone is a trademark of Apple Inc., registered in the U.S. and other countries. "Made for iPhone" means that an electronic accessory has been designed to connect specifically to iPhone and has been certified by the developer to meet Apple performance standards. Apple is not responsible for the operation of this device or its compliance with safety and regulatory standards. Please note that the use of this accessory with iPhone may affect wireless performance. Android is a registered trademark of Google Inc. The Bluetooth® word mark and logos are registered trademarks owned by Bluetooth SIG, Inc. and any use of such marks by ESCORT is under license.

ESCORT

MAX 360

MAX360

360° Radar / Laser Detection with Alert-signaling Arrows

360° ALERTS

360° Directional Alert Arrows

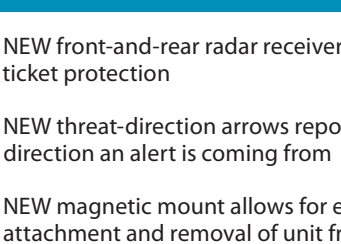
Dual Antenna Front / Rear Detection

GPS-Powered Alert Accuracy

Lightning Fast Response

Quick Reference

MAX 360 Features

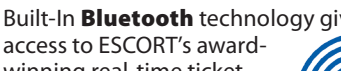
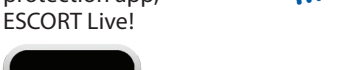


HD Performance identifies real threats faster than any other detector, providing advanced warning when you need it.

locks out false alerts and allows you to save locations for future reference

Access to ESCORT's DEFENDER Database, which warns you of

light camera

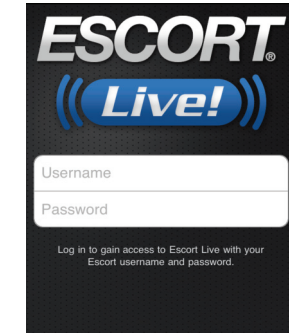
winning real-time ticket-
 distribution. **ESCORT.**

Downloaded from <http://ajph.org/> on November 10, 2015

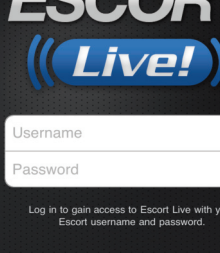
R - LASER DET

Registration

1 Enter the iTunes App Store or Google play store on your smartphone and search for ESCORT Live radar.



- 2 Follow the onscreen instructions to download.
- 3 When prompted, enter the username and password you created when registering your MAX 360 device.



ESCORT®

Live!

Username

Password

Log in to gain access to Escort Live with your
Escort username and password.

Downloading ESCORT Live!

- 3** When prompted, enter the username and password you created when registering your MAX 360 device.

Pairing your Smartphone

6 Open the ESCORT Live App, walk through the tutorial, and you're ready to hit the road!

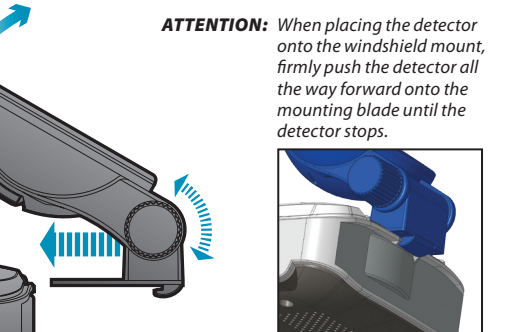
Warranty

LIMITATION OF WARRANTY: The obligations set forth above are Escort's sole obligations and your exclusive remedy. Escort makes no other express warranty. Any implied warranty of merchantability or fitness for a particular purpose that may be applicable to the Product is limited in duration to the duration of this warranty. Some States do not allow limitations on how long an implied warranty lasts, so the above limitation may not apply to you. ESCORT SHALL NOT BE LIABLE FOR CONSEQUENTIAL, SPECIAL OR INCIDENTAL DAMAGES INCLUDING, WITHOUT LIMITATION, DAMAGES ARISING OUT OF THE USE, MISUSE OR MOUNTING OF THE PRODUCT. Some States do not allow the exclusion or limitation of incidental or consequential damages, so the above limitation or exclusion may not apply to you. Escort is not responsible for products that in shipment between the owner and our service center. Other legal rights: This warranty gives you specific legal rights, and you may also have other rights which vary from State to State.

Installation

StickyCup Care Instructions:
To clean your StickyCup, simply rinse under warm water, gently wipe off any debris and allow to air dry.

Slide the detector all the way forward on the windshield mount until it stops. The magnet inside holds the detector in place.



Controls & Feature

: You can easily access and customize all of Settings and Preferences by pressing and holding the BRT and SEN buttons. See Settings & Preferences for details.

Mute Button:

- ▶ Press to mute an alert
- ▶ Press three times to lock out a false alert
- ▶ Press twice while receiving a locked-out alert to unlock
- ▶ When connected to ESCORT Live press and hold mute button on unit or cord to manually report to other users a verified X or K-band alert, or a police officer observing traffic

Alert Light:

Blinks orange when receiving an alert

Power Light:

Lights blue when receiving power



continued →