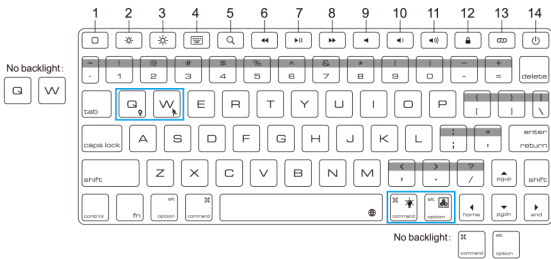


TRACKPAD PREMIUM SMART CASE FOR IPAD 9.7" & PRO 12.9" (3RD GEN-2018)



Keyboard function



- Home (Displays the iPad home screen)
- Darker
- Brighter
- Virtual keyboard
- Search (Launches the iPad search function)
- Back
- Play/pause (Note: third party player video is not supported)
- Forward
- Mute
- Volume down
- Volume up
- Lock screen (Click on the lock screen)
- Pair code (Keep pressing for 2 seconds)
- Power button (Keep pressing for 2 seconds to turn on, Keep pressing for 2 seconds to turn off)

Special key instructions

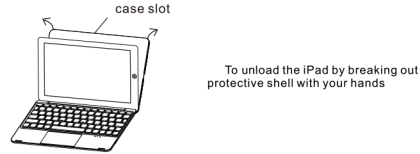
- Switch input method by pressing **Fn** + **[Key]**. (Note: Wubi input method is not supported)
- Turn on/off or adjust the backlight. Operating Method: Press once to turn on the backlight. Press again will increase the brightness. The third time will maximize the brightness. And the fourth time will turn off the backlight. (Only backlight version)
- Press these two keys to switch the rainbow backlight and white color. (Only backlight version)
- To type the character in grey area, hold shift and press the desired character.
- + other keys can realise some uncommon special characters
- Some special short characters
Cut **[Command]** + **[X]** Paste **[Command]** + **[V]** Select All **[Command]** + **[A]** Copy **[Command]** + **[C]**
- Breathing lamp mode: There are 2 key combinations. **[Fn]** + **[Key]** control breathing lamp switch **[Fn]** + **[Key]** controls the speed of the breathing lamp. (Only backlight version)

Load/Unload your iPad

Load the iPad

- Put your iPad on the groove exactly
- Press your iPad, let stuck in groove on the keyboard cover

Unload the iPad



Wireless connection

- Power on keyboard, then keep pressing **[Bluetooth]** for 2 seconds, the keyboard will stay on searching state within 3 minutes.
- Tap your iPad's settings
- Bluetooth **ON**
- iPad keyboard

Open your Bluetooth signal, keep the Bluetooth showing "on" search state

On other devices in the Settings menu choose "iPad Keyboard", wireless signal light go out, connection is successful.

Note: Bluetooth will automatically be connected when using next time.

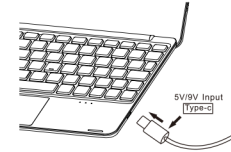
Product features

- Wireless connection without password, easy to handle.
- Clamshell bracket design to meet your visual needs.
- Super light and thin design, very portable.
- With rainbow backlight effect, more fashionable.
- Support energy saving sleep mode.
- With the function of touch pad, the operation is more convenient.

how to enable trackpad ?

Open iPad Settings, then choose Accessibility
Next tap Touch then AssistiveTouch and toggle it "on"

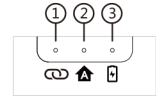
Charging instructions & maintenance



Indicators Instructions

- Blue LED: Flashing in wireless pairing state.
- White LED: Caps lock Indicator
- Red/Green LED: Blink at low-battery, the red light turns on when charging; green light when fully charged.

Maintenance: keep at normal temperature and charge at normal voltage. If you don't use it for long time, you need to charge your keyboard in time (once of two months)



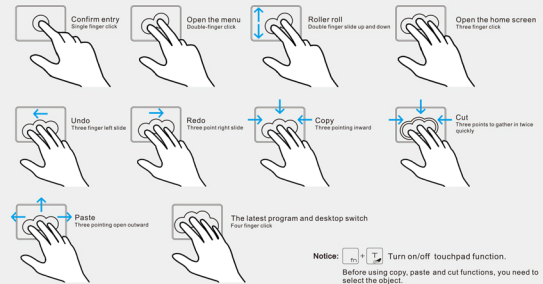
Product parameters

- Operating distance: 10 m
- Modulation system: GFSK
- Working voltage: 3.3~4.2V
- Charging current: 250 mA
- Standby time: 90 days
- Lithium battery capacity: 500 mAh
- Continuous working time: <2.5 hours (turn on the backlight) / 180 hours (turn off the backlight)
- Charging time: <3 hours
- Lithium battery life: 3 years
- Key life: >5 million strokes
- Operating temperature: -10~55°C

Matters needing attention

- Keep the keyboard away from sharp objects.
- Do not place heavy objects on the keyboard.
- Do not forcefully distort the keyboard.
- Stay away from oil or other organic objects.

Trackpad gesture description



Notice: **[Fn]** + **[Key]** Turn on/off touchpad function. Before using copy, paste and cut functions, you need to select the object.