

Gold & Cherry

Instructions

**Bluetooth Keyboard
For iPad Pro**

CONTENTS

Know your product	8
Install/Uninstall iPad	9
Open power	10
Open the bluetooth signal and connetion	10
Keyboard function introduction	11
Charge for keyboard/discharge for keyboard	12
Product parameter	13
Maintenance	13
Keyboard battery disposal	14

Product Features

1. Totally aluminum alloy keyboard cover

Made of high standard aluminum alloy material, totally aluminum alloy Bluetooth keyboard cover.

2. Seven color LED backlit keys

Seven color backlighting design, support different brightness control, bring you different enjoyment.

3. Powerful capacity power bank

With 5600mah capacity power bank, can charge for your mobile phones, tablets and other devices.

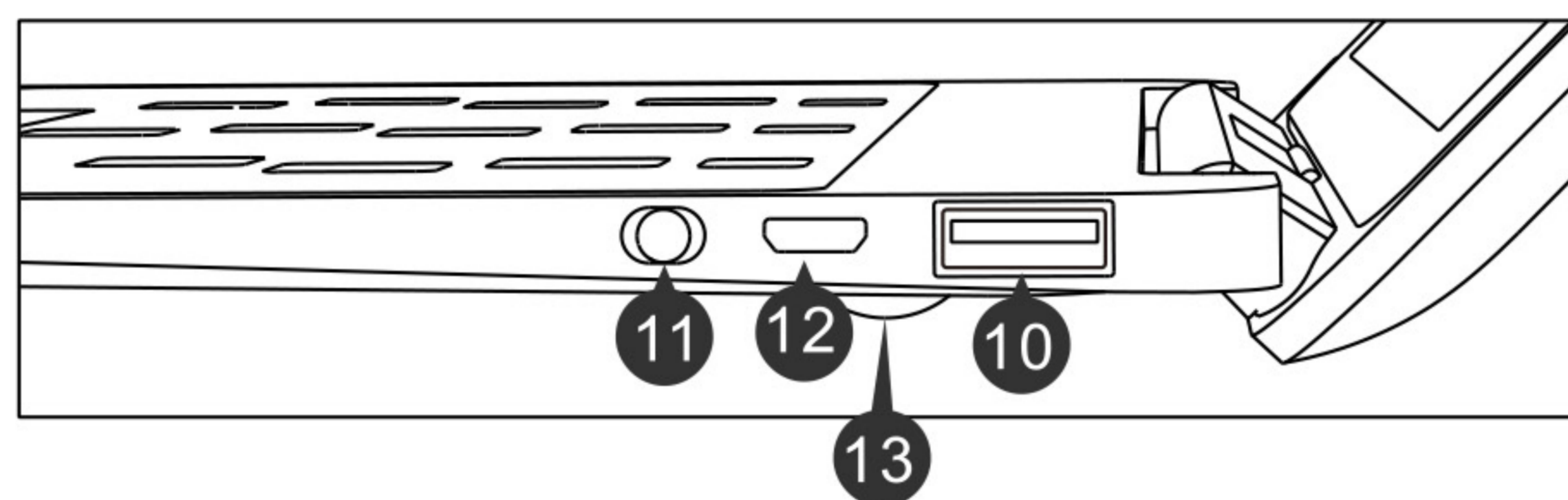
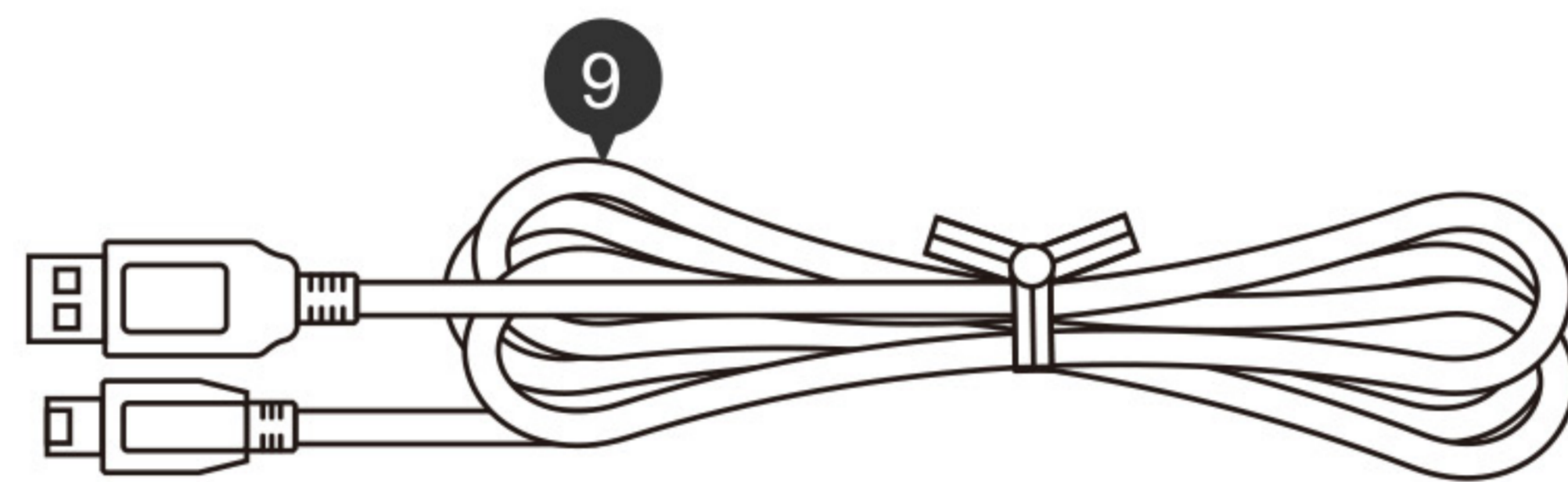
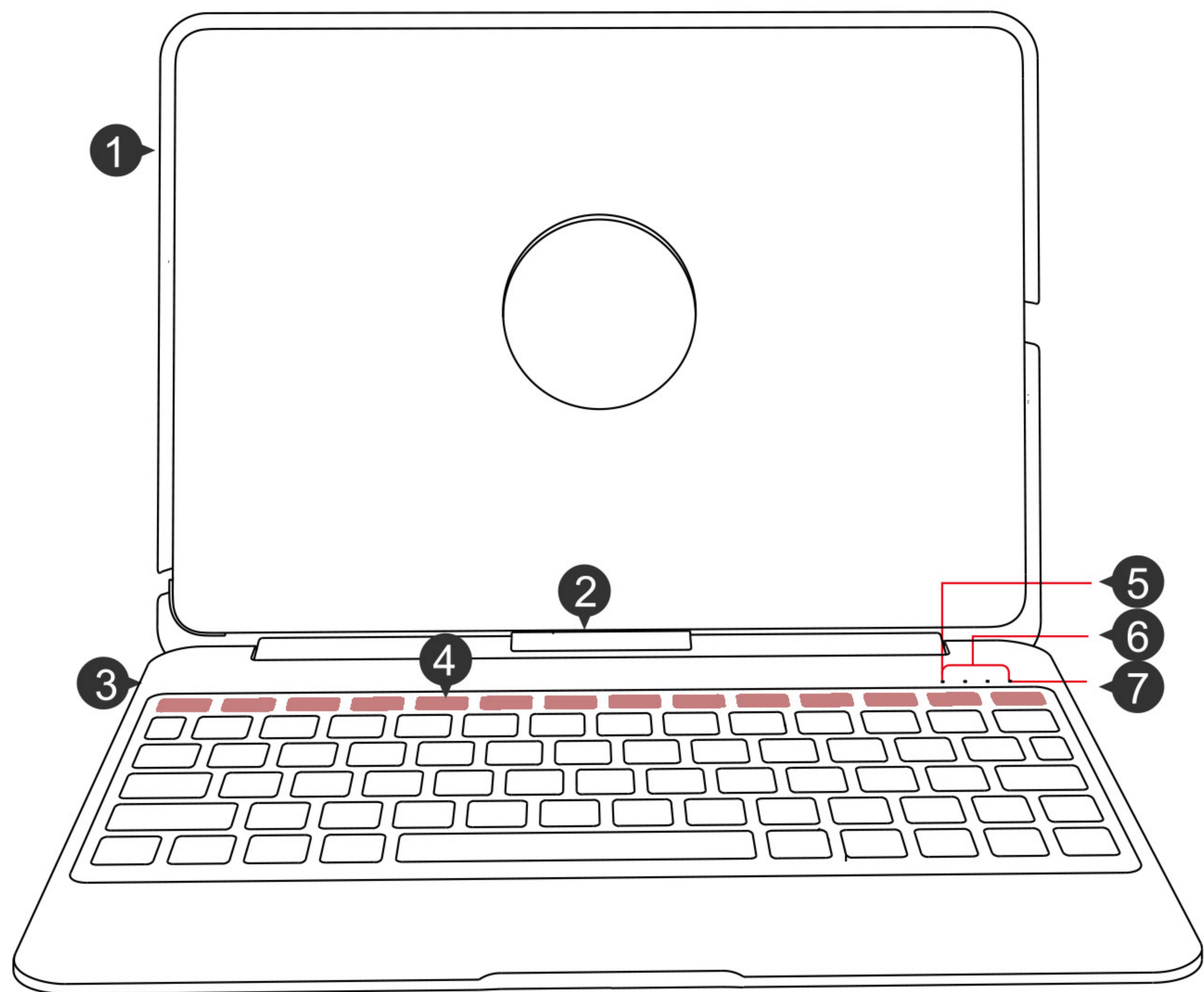
4. Ultra slim and portable

Clamshell type of design, the thickness of key only 4mm, super convenient to carry.

5. Special function keys

Special function keys help you get more done from the convenience of your keyboard.

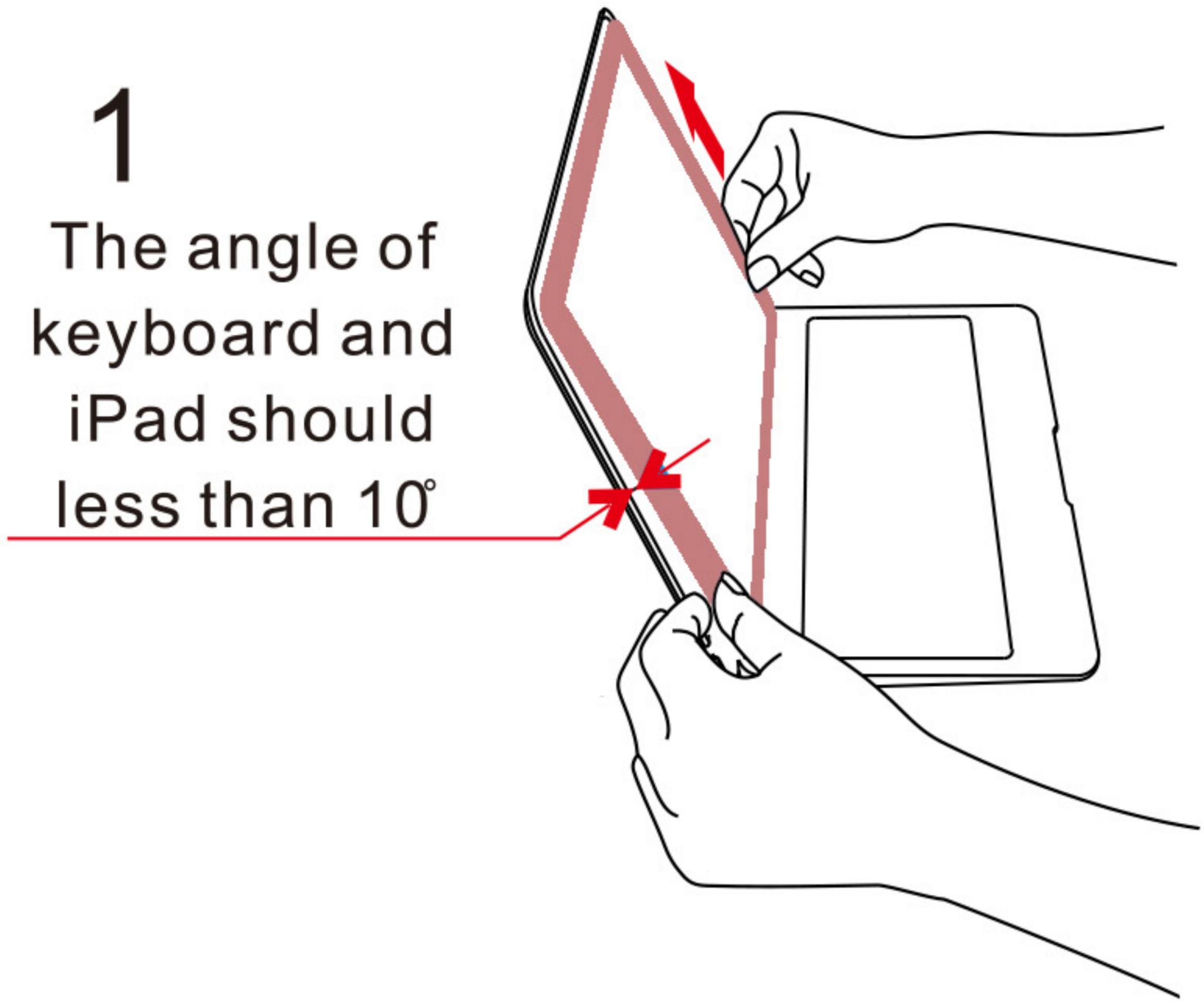
Know your product



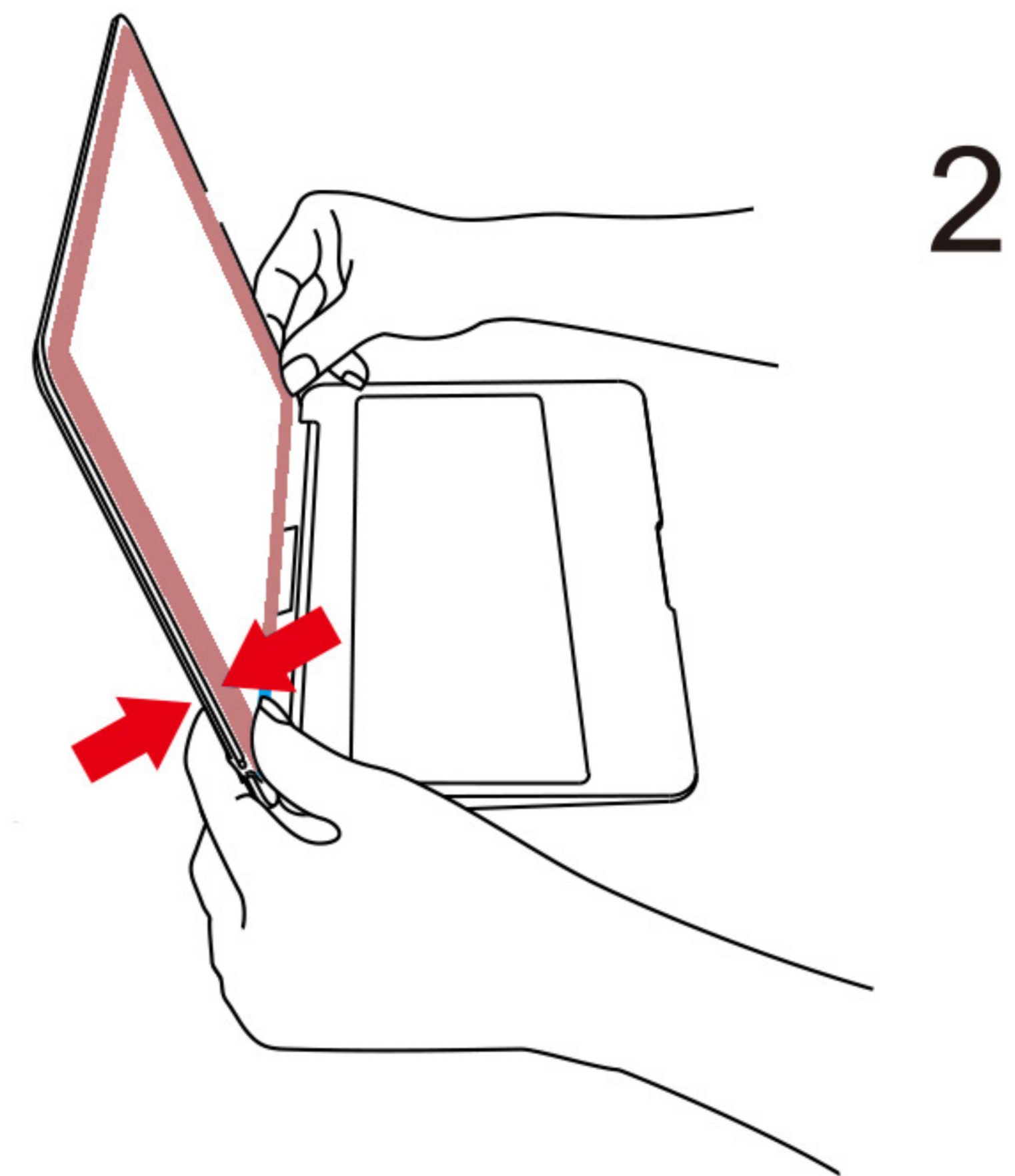
- | | |
|---------------------------------|-----------------------------|
| 1. iPad protective cover | 8. Instructions |
| 2. Install/Uninstall button | 9. Micro-USB charging cable |
| 3. Keyboard body | 10. Usb discharging port |
| 4. Function keys (blue area) | 11. Micro-USB charging port |
| 5. Capital indicator | 12. Power switch |
| 6. Battery indicator (4 lights) | 13. Pad |
| 7. Bluetooth indicator | |

Install/Uninstall iPad

Install iPad

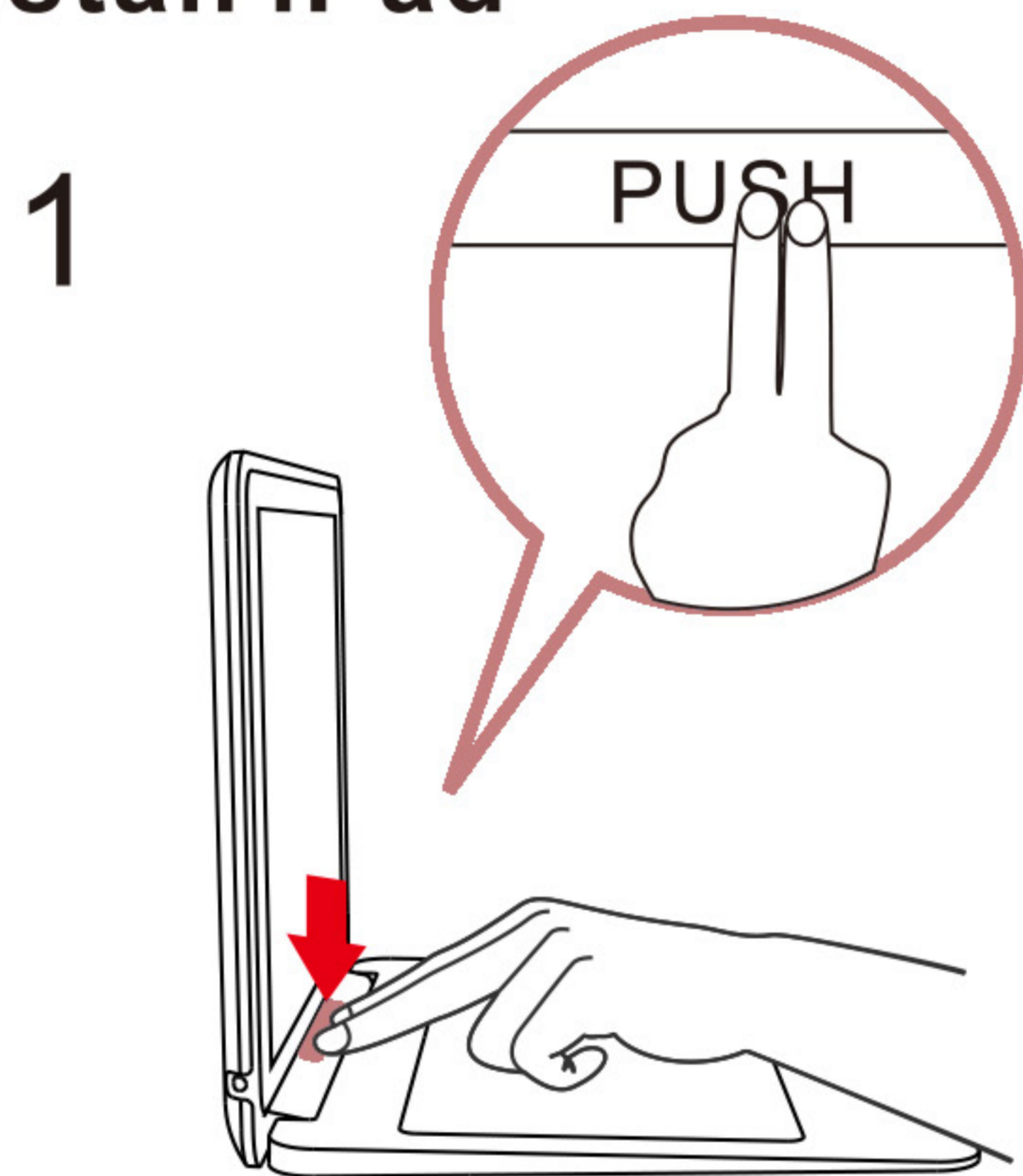


Load the iPad into the the protective shell,suggest loading angel is 10° .

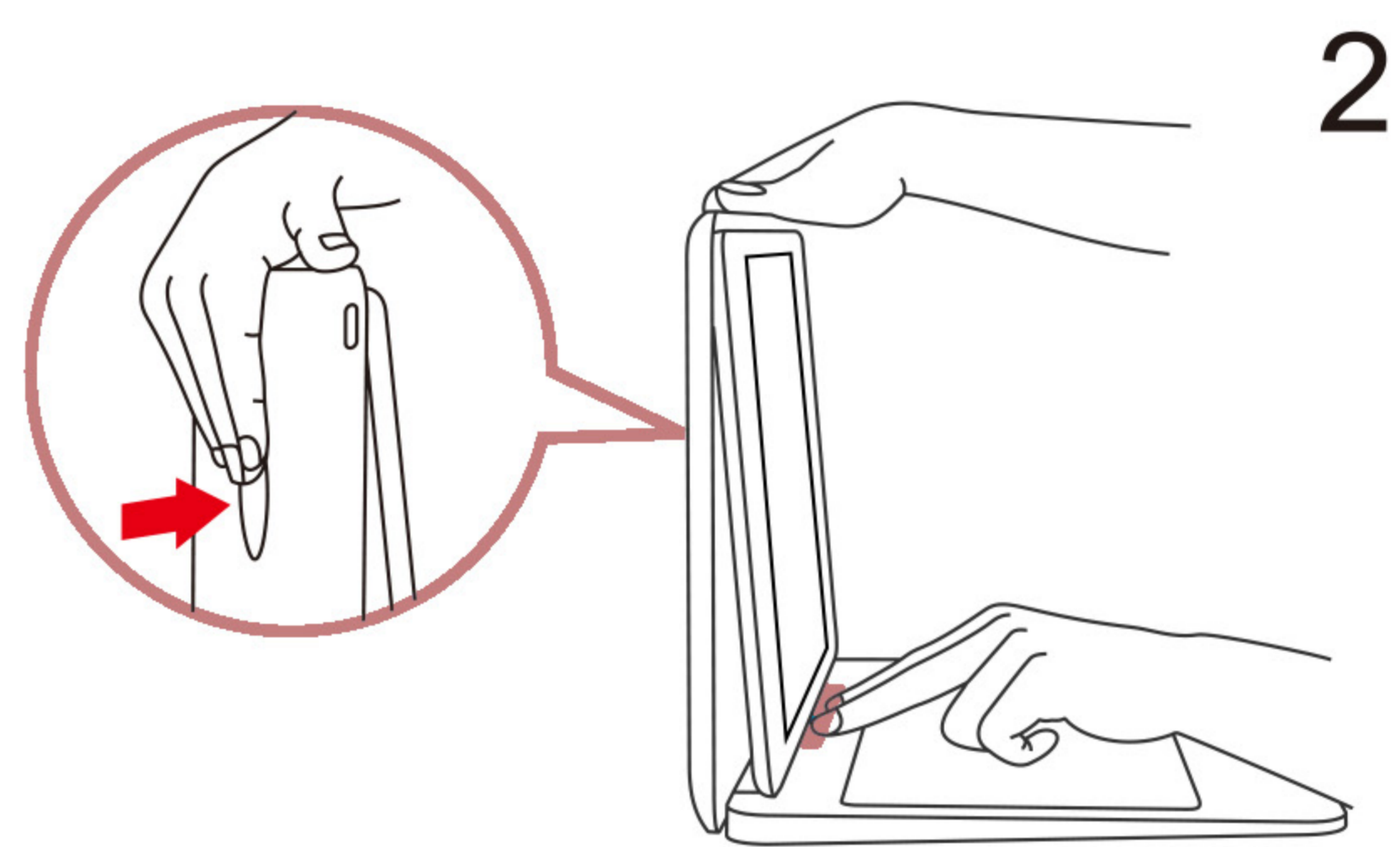


Gently press the sides of the iPad by thumb,make sure the iPad is well seated into the shell slot.

Uninstall iPad

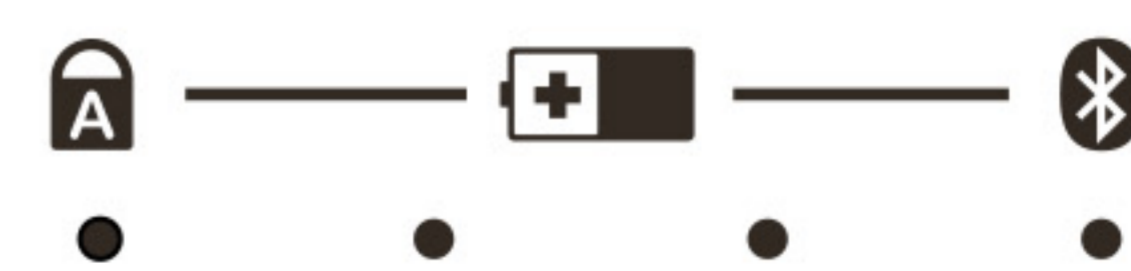
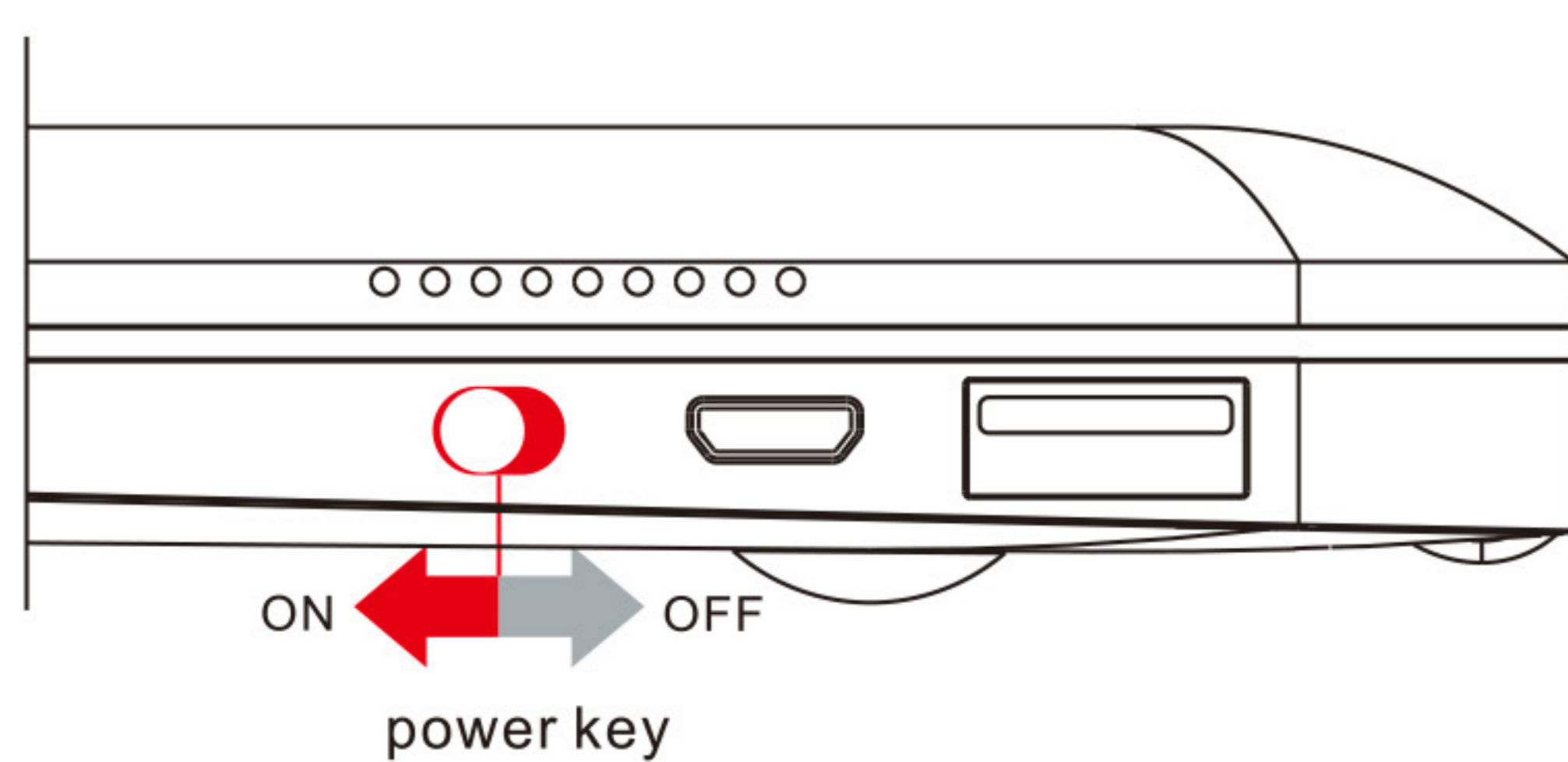


Constantly press the "push" button



Gently push the round hole from the back of the protective shell, take out the ipad safely.

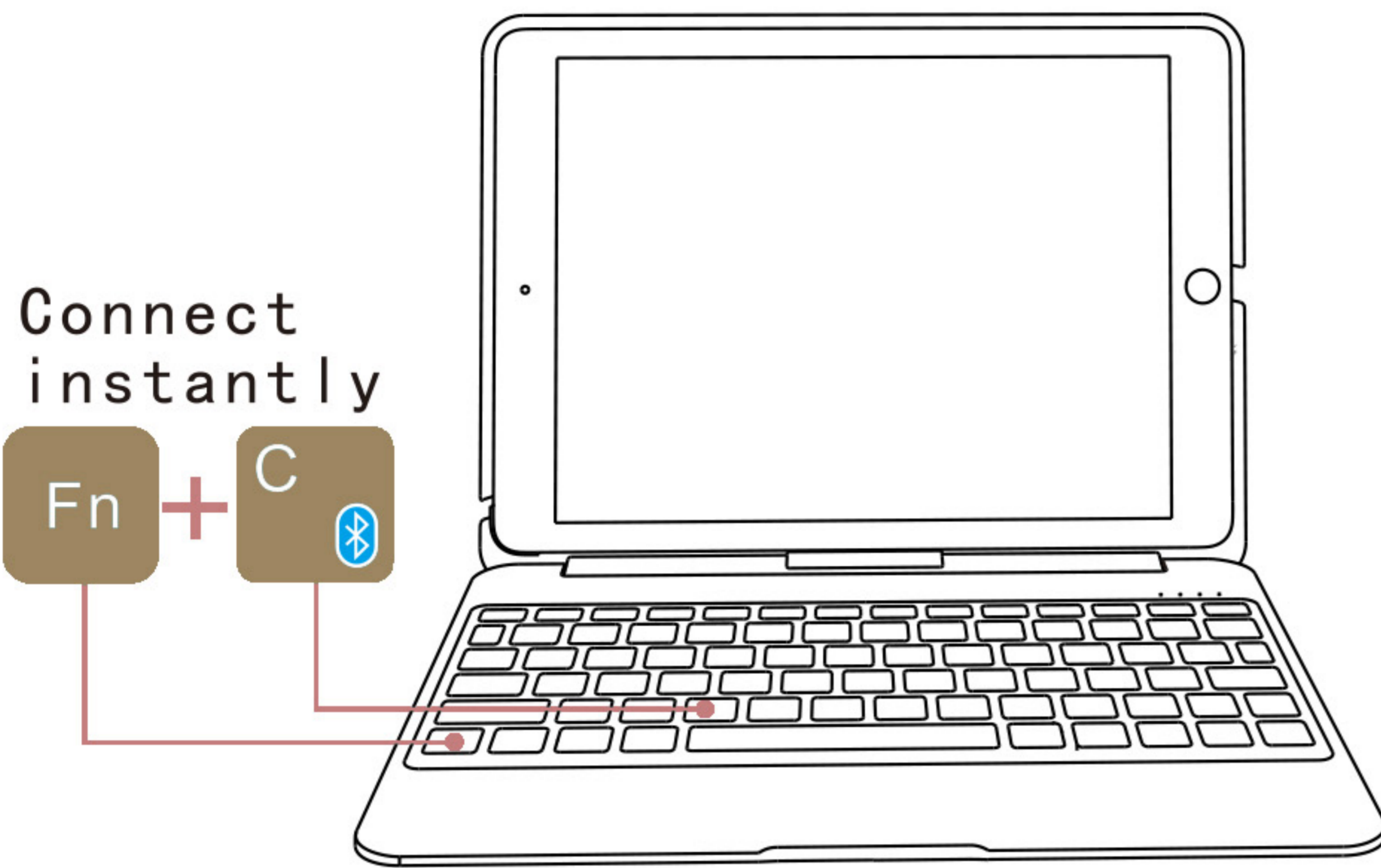
power On



- 1、 Open the keyboard cover, move the switch to "on" position, then capital indicator and Bluetooth indicator display white and blue color respectively, after 3 seconds will automatically go out.
- 2、 Close the keyboard cover, and move the switch to "off" position, then enter into sleep mode.

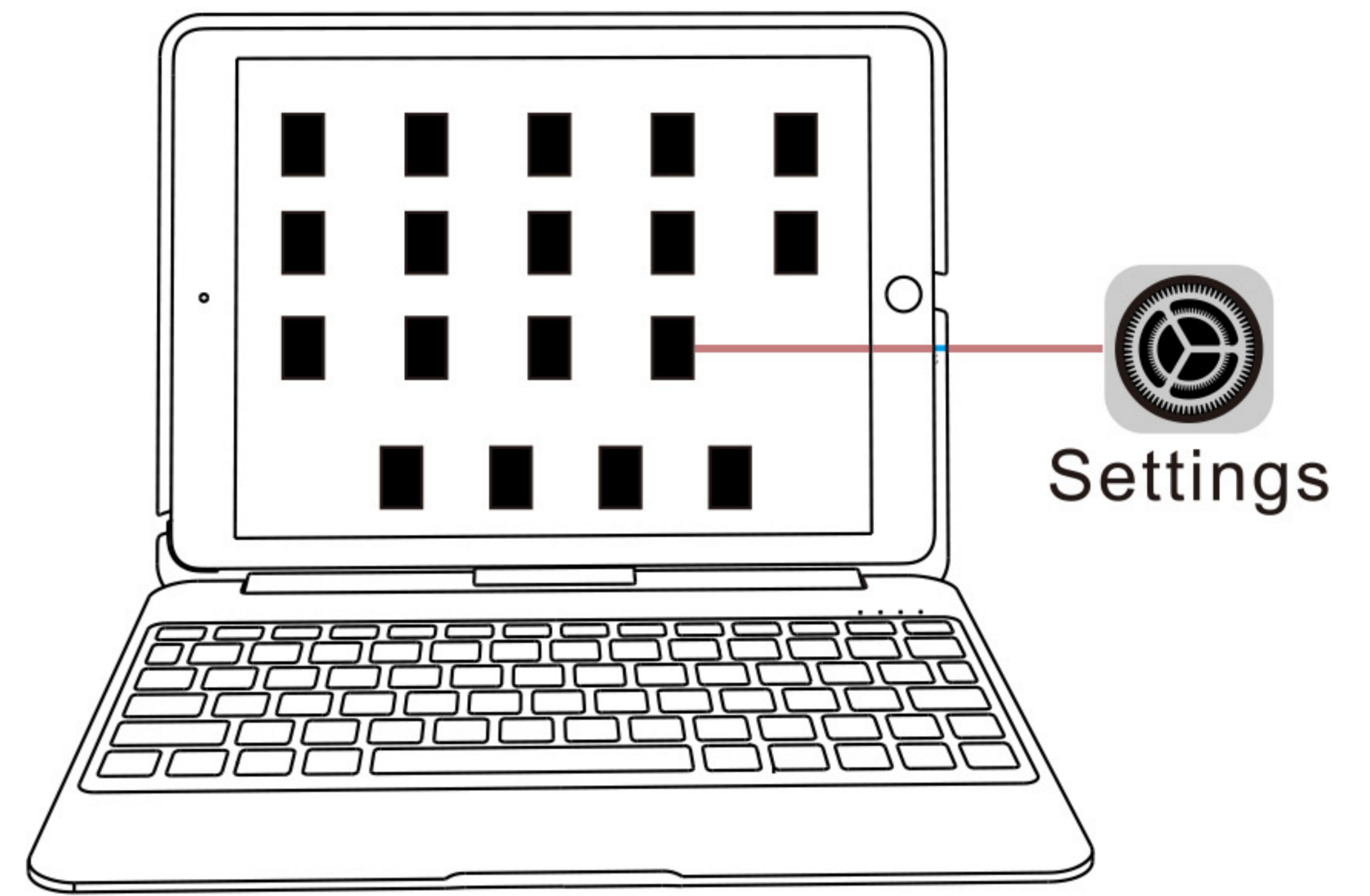
Open the bluetooth signal and connetion

1



Press **Fn + C**, the signal light is flashing, the keyboard will stay on searching state within 3 minutes

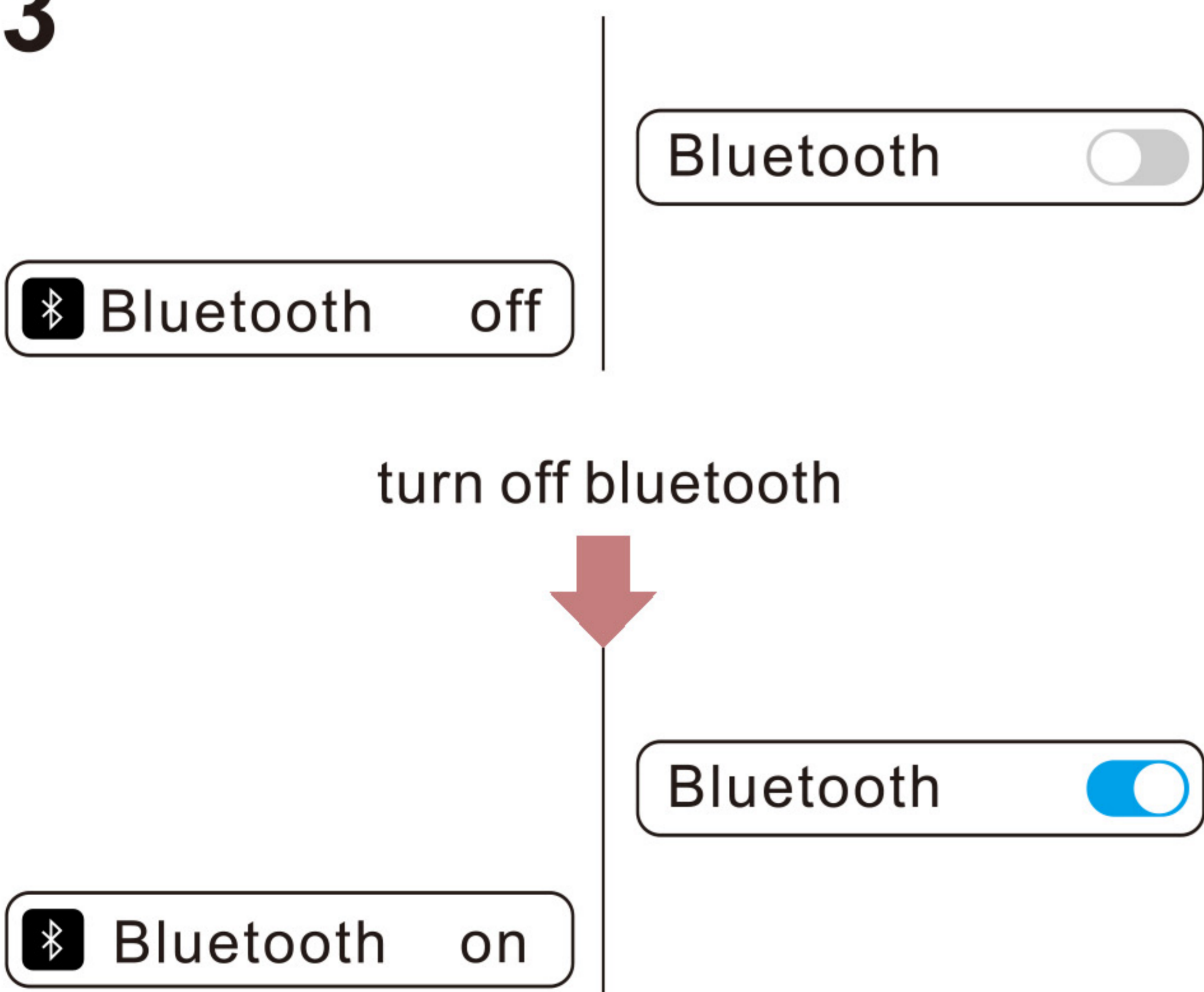
2



Open your iPad,click "settings-universal-bluetooth"

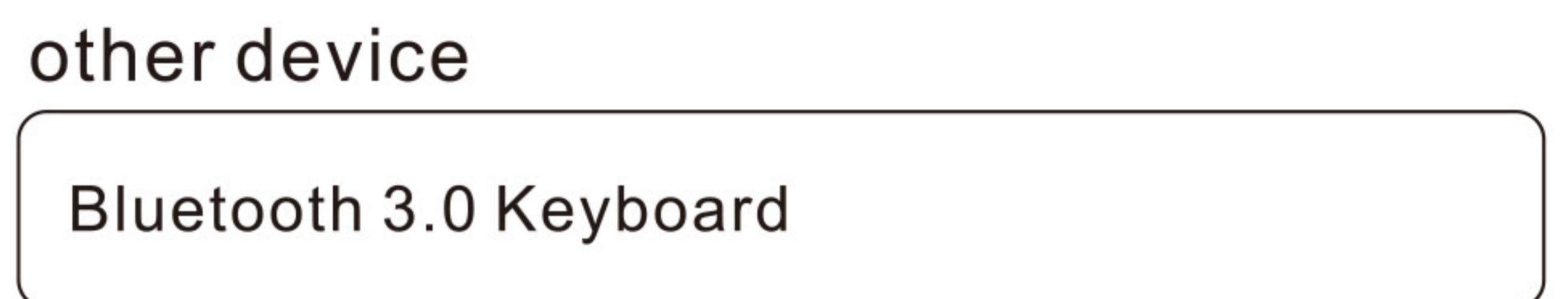


3

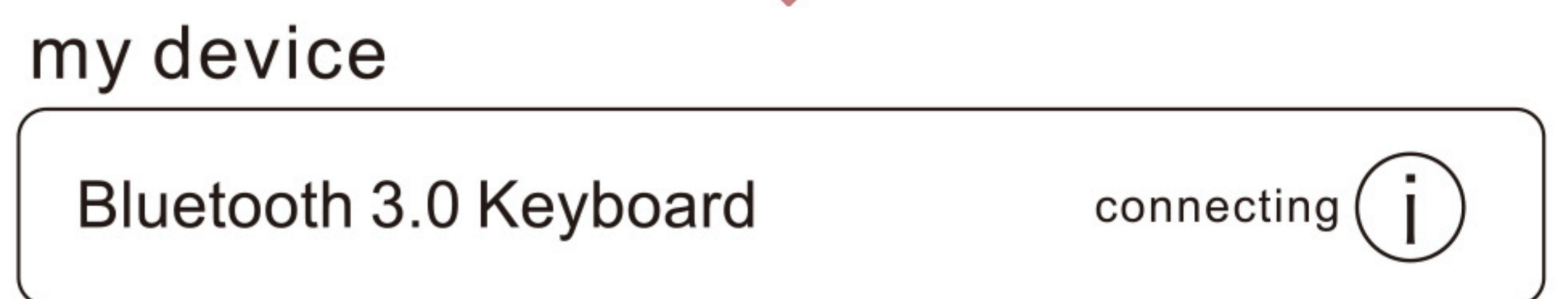


Open your bluetooth signal, keep the bluetooth showing on search state

4

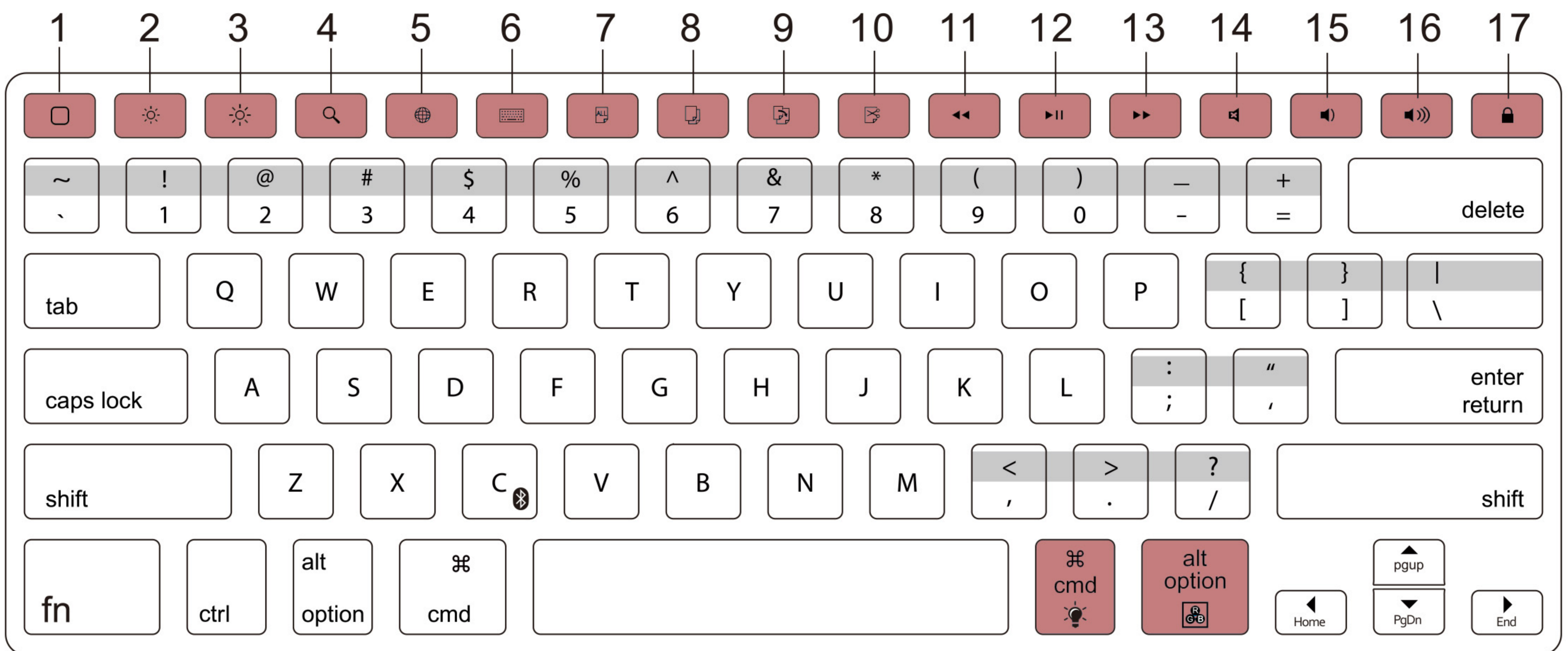


Open bluetooth,click "Witsp@d Bluetooth 3.0 Keyboard" in other devices.



Then you will find connection is successful in "my devices"

Keyboard function introduction



- | | |
|--|---|
| 1. Home (Displays the iPad home screen) | 10. Cut |
| 2. Darker | 11. Back |
| 3. Brighter | 12. Play/pause |
| 4. Search (Launches the iPad search function) | 13. Forward |
| 5. Switch input language | 14. Mute |
| 6. Virtual keyboard | 15. Volume down Switch |
| 7. All selection | 16. Volume up |
| 8. Copy | 17. Lock screen (Locks or unlocks the iPad screen) |
| 9. Paste | |

Special key instructions

- Switch the language input methods by pressing **Fn** + .
- Fn** + Turn on/off or adjust the backlit operating methods: turn on backlit by pressing one time, increase the brightness by pressing two times, reach the brightest by pressing three times, one more time to turn off the backlit color.
- Fn** + Switch the 7 backlit colors (red, yellow, blue, green, cyan, purple, white).
- If you want to type the words in grey area, like "@", you need to press **shift** + key.
- + other keys can realise some uncommon special characters.
- Some special short characters

Cut +

Paste +

Select all +

Copy +

Product parameter

Bluetooth 3.0 interface standard

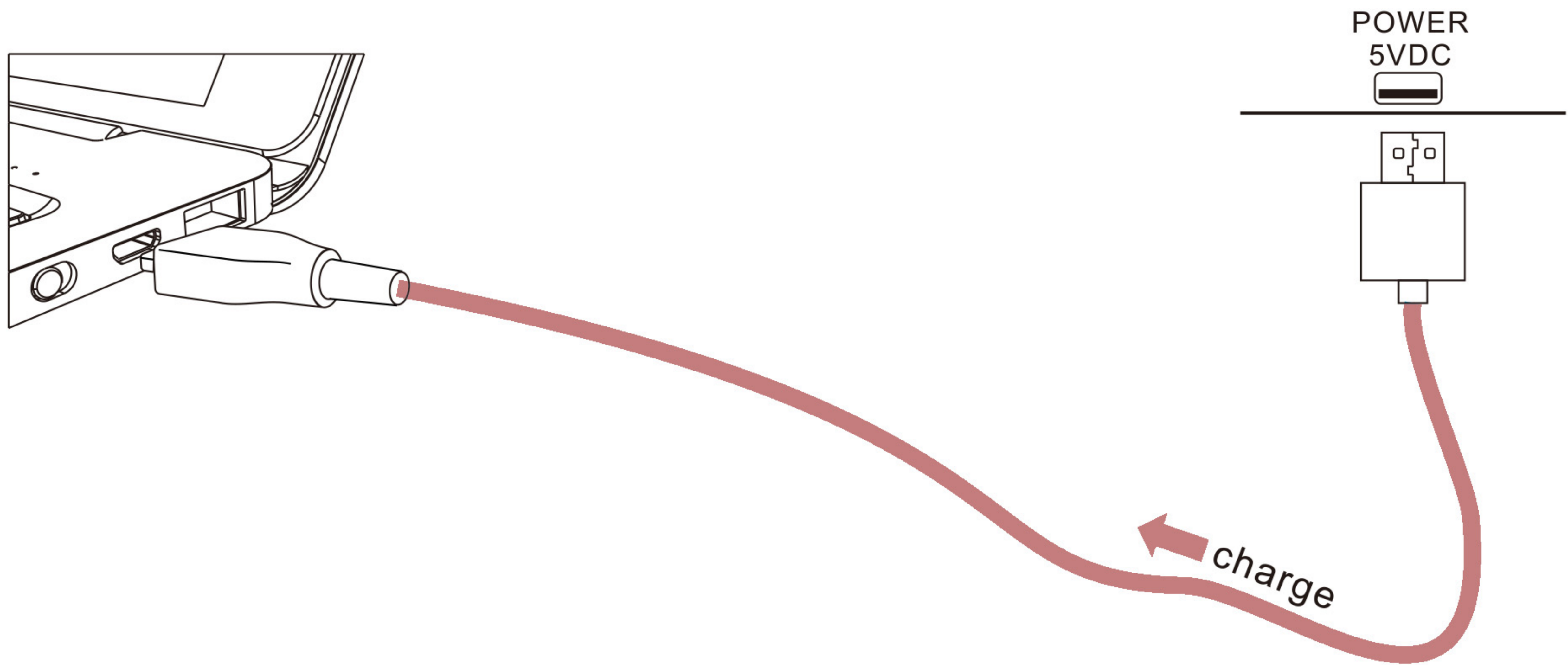
1. Operating distance : <10 meter
2. Modulation System: GFSK
3. Working voltage: 3.0-4.2v
4. Working Current:1.3-3.5mA
5. Sleep Current: <400 μ A
6. Charging Current:770mA
7. Standby Time: 366days
8. Uninterrupted Working Time: 1870H(without backlight)
46H(with backlight)
9. Charging Time: <6 hours
10. Lithium battery capacity : 4400mAh
11. Lithium battery Life: 3 years
12. Key life: >5 million strokes
13. Operating temperature: $-10 \pm 55^{\circ}\text{C}$

Maintenance:

Preserve the keyboard under normal temperature, recharge under normal voltage.If do not use for long time, need to timely charge (about one time in two months).

Charge for keyboard/discharge for keyboard

Charge for keyboard



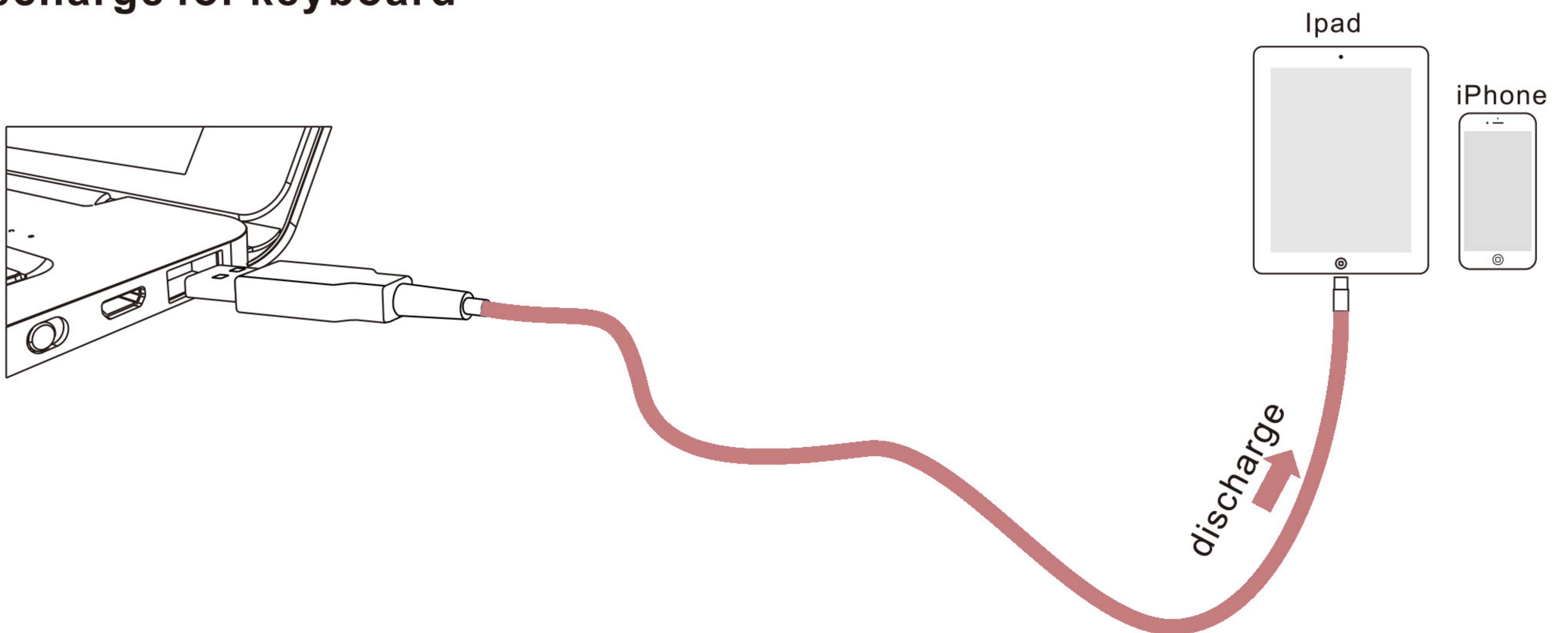
Using cable to connect both ports, then enter into charging state, you can see power state through power indicator.

Power indicator(charge/discharge)

- ● ● ● 100%power
- ● ● ● 75%power
- ● ● ● 50%power
- ● ● ● 25%power
- ● ● ● Less than 25% power

- Full power
- Charging/discharging
- No power

Discharge for keyboard



Using cable to connect both ports, then enter into discharging state, you can see power state by power indicator.