



ALL THE AIRES - SPAIN AND PORTUGAL 6th Edition

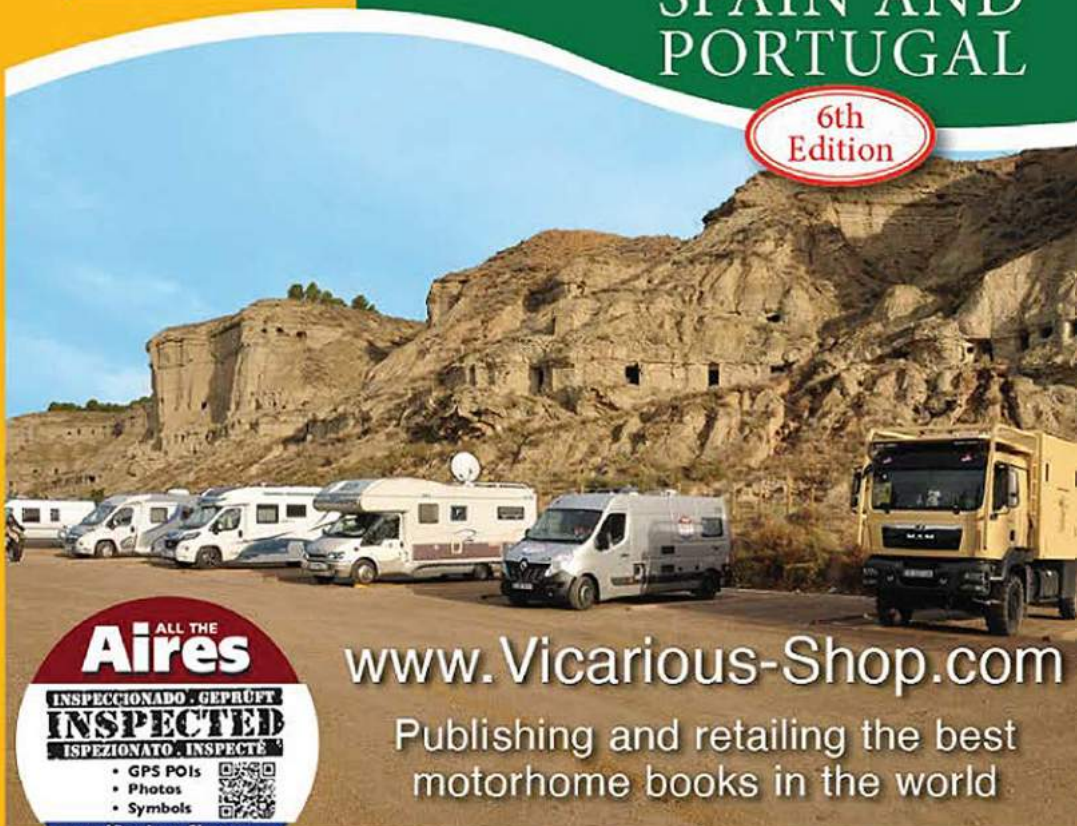
Vicarious Media



ALL THE Aires

SPAIN AND PORTUGAL

6th Edition



www.Vicarious-Shop.com

Publishing and retailing the best motorhome books in the world

ALL THE Aires

INSPECCIONADO . GEPRÜFT
INSPECTED
ISPEZIONATO . INSPECTÉ

- GPS POIs
- Photos
- Symbols

www.Vicarious-Shop.com
+44 (0) 131208 3333



Free updates at www.Vicarious-Shop.com/blog



Going here? Buy All the Aires France - North & South

CONTENTS	Page
Introduction	4
Glossary	5
How to use this Guide	6
Further Information	10
Service Points Explained	13
Spain Aires	19
Spain Service Points	323
Portugal Aires	335
Portugal Service Points	423
Motorway Service Points	427
LPG Spain	432
LPG Portugal	442
User Updates	448
Index Spain	449
Index Portugal	455
Submission Form	457



Abbreviations and Glossary of Terms

Adj	Adjacent.	Leisure path	Purpose-made off road walking/cycling path, often along old railway lines.
Alt	Altitude in metres.	May feel isolated if alone	Locations without habitation nearby, but don't lose sleep over it.
CC	Credit card.	Open	No shade/shelter.
CL style	Small grass parking area.	Opp	Opposite.
Commerce		Oversubscribed	Aire unlikely to have space.
Local commerce	One or more: bar, baker, restaurant, convenience store, hair dresser.	Popular	Aire likely to be busy.
Small town commerce	As above plus a mini market and bank.	Poss	Possible.
Tourist commerce	Seasonal restaurants, activities and commerce.	Private Aire	Run by an individual, often at home or business.
Town commerce	Big enough to have a wedding dress shop.	Pp	Per person.
Commercial Aire	Run for profit. Pay at barrier or pay guardian.	Sp	Signposted 'Town name'.
Dead quiet	Peaceful location adj to cemetery.	Signed	Aire signed with symbol or text.
Grass parking	Will not be marked as open all year, but can be used whenever conditions allow.	'text'	Extracts from signs.
Hell's bells	Especially noisy church bells that chime all night or go like the clappers at 6am!	TO	Tourist Office.
HGV	Heavy goods vehicle.	Tolerated	Unofficial motorhome parking.
Inc	Included in price.	Trucking hell	Noisy HGVs hurtling past day and night.
Inside barrier	Service Point behind barrier at pay Aire. Access may be free or reduced cost for short duration.	Inspected	Inspected by Vicarious Media team; staff or Airehead.
Landscaped	Aire with defined pitches/areas	Visited	Customer submission.
		Submitted	Owner supplied information.
		Updated	Information has been verified and confirmed.



Cretas

HOW TO USE THIS GUIDE

Inside covers. Maps colour coded by country. All Aires numbered 1-2-3... in each country.

Cartes codées par couleur selon le pays. Toutes les aire de service numérotées 1-2-3... dans chaque pays.

Karten farblich nach land codiert. Alle Stellplätze nummeriert 1-2-3... in jeder Land.

Mappe a colori di un codice paese. Tutte le aree di sosta numerati 1-2-3... in ciascuna paese.

Mapas codificados por color según la país. Todos área de servicio numerados 1-2-3... en cada país.



SERVICE POINTS

Signs: When provided, it is advisable to follow the instructions provided in the site. Signs and symbols differ widely across all road networks. Unfortunately, complex signs have to be changing sometimes. Our symbols on their location and meaning signs. Other than to be noticed that the signs are missing in several service facilities. It is safe to assume that all complete have service facilities and the services in a network.

Facilities: Almost all service facilities are available with the facilities to use and get in their places. Generally they are equipped. Also it is not possible to reserve spots. They are designed for continuous use and are usually free of charge. In some cases, there are parking fees. In some cases, there are parking fees. In some cases, there are parking fees.

Booking: Almost all service facilities are available with the facilities to use and get in their places. Generally they are equipped. Also it is not possible to reserve spots. They are designed for continuous use and are usually free of charge. In some cases, there are parking fees. In some cases, there are parking fees.

SERVICE POINTS

Service Points: Almost all service facilities are available with the facilities to use and get in their places. Generally they are equipped. Also it is not possible to reserve spots. They are designed for continuous use and are usually free of charge. In some cases, there are parking fees. In some cases, there are parking fees.

Facilities: Almost all service facilities are available with the facilities to use and get in their places. Generally they are equipped. Also it is not possible to reserve spots. They are designed for continuous use and are usually free of charge. In some cases, there are parking fees. In some cases, there are parking fees.

Booking: Almost all service facilities are available with the facilities to use and get in their places. Generally they are equipped. Also it is not possible to reserve spots. They are designed for continuous use and are usually free of charge. In some cases, there are parking fees. In some cases, there are parking fees.

Page 10-17. Further information.

Before you depart read the further information. Avant votre départ lire les informations utiles. Bevor Sie abreisen lesen Sie die nützliche Informationen.

Prima di partire leggere le informazioni utili. Antes de partir léido la información útil.

Page 19-250. Colour coded chapters by country. All countries use map numbers 1-2-3...

Code couleur chapitres par pays. Toutes les pays utilisent des numéros de carte 1-2-3...

Kapiteln farblich nach Land codiert. Alle länder verwenden map Zahlen 1-2-3...

Codice colore capitoli per paese. Tutte le paese usare i numeri 1-2-3...

Código de colores capítulos según la país. Todas las país utilizar los números del mapa 1-2-3...



HOW TO USE THIS GUIDE

- 1 Town name.
- ★ The inspectors rate the Aire or location to be better than most. Often the view or surrounding area is of interest.
- 2 Surroundings, see cover flaps for key.
- 3 Map grid reference.
- 4 Map number or letter.
- 5 GPS coordinates.
- 6 Postcode.
- 7 Photographs of Aire.
- 8 Directions.
- 9 Service Point details, see cover flaps for key.
- 10 Parking details, see cover flaps for key.
- 11 Number of parking spaces; Cost per night; Time limit.
- 12 Service Point type; Payment type if not cash; Cost.
- 13 Description.
- 14 Local amenities, see cover flaps for key.
- 15 Fuel station brand.
- 16 Large motorhome access.

Note: Symbols in grey = unavailable

Français

- 1 Nom de ville.
- 2 Ambiance.
- 3 Localisation cartographique.
- 4 Numéro de carte.
- 5 Pointage GPS.
- 6 Code Postal.
- 7 Photographies de l'aire.
- 8 Indications.
- 9 Services proposées; eau, électricité, WC etc.
- 10 Détails de stationnement.
- 11 Le nombre de places de stationnement disponibles, avec tarif et durée maximale d'occupation.
- 12 Type de borne camping-car et prix.
- 13 Description.
- 14 Commodités locales.
- 15 Marque de station service.
- 16 Accès pour les grandes autocaravanes.
- ★ Aire bonne.

Deutsch

- 1 Stadtname.
- 2 Masseinheiten.
- 3 Gitterkoordinaten.
- 4 Karten-Zahl.
- 5 GPS-Koordinaten.
- 6 Postleitzahl.
- 7 Stellplatz-Photos.
- 8 Richtungen.
- 9 Einrichtungen.
- 10 Eigenschaften.
- 11 Zahl der Parzellen.
- 12 Näheres und Gebühren für Service.
- 13 Beschreibung.
- 14 Lokale Annehmlichkeiten.
- 15 Kraftstoffstationmarke.
- 16 Großer wohnmobile Zugang.
- ★ Gute Stellplatz.

Italiano



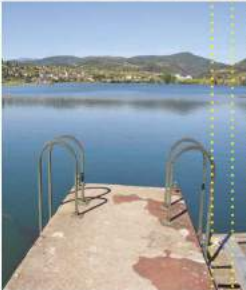
- 1 Nome della città.
- 2 Le unità hanno accettato.
- 3 Riferimento di griglia.
- 4 Numero del programma.
- 5 Il GPS coordina.
- 6 Codice postale.
- 7 Fotografie del luogo.
- 8 Sensi.
- 9 Facilità.
- 10 Caratteristiche.
- 11 Numero dei passi.
- 12 Particolari e spese per servizio.
- 13 Descrizione.
- 14 Amenità locali.
- 15 Marca della stazione del combustibile.
- 16 Grande accesso del camper.
- ★ Buono Aire.

Español

- 1 Nombre de la ciudad.
- 2 Las unidades aceptaron.
- 3 Referencia de rejilla.
- 4 Número del mapa.
- 5 El GPS coordina.
- 6 Código Postal.
- 7 Fotografías del sitio.
- 8 Direcciones.
- 9 Instalaciones.
- 10 Características.
- 11 Número de echadas.
- 12 Detalles y cargas para el servicio.
- 13 Descripción.
- 14 Amenidades locales.
- 15 Marca de fábrica de la estación del combustible.
- 16 Acceso grande del autocaravanas.
- ★ Buena Aire.

HOW TO USE THIS GUIDE

Explanation of an entry

1	2	3	4	5	6
A RUA *	B3	343	N42°23.326' W007°06.919'		32350
			<p>► Rúa da Noria. Turn off OU-603, main route through town, at western end, sp 'Polideportivo O Aguillón' and signed. At Stop junction turn under railway bridge, signed, then follow road for 450m. Turn right, signed, and Service Point on left.</p>		
					
7	8	9	10	11	12
			<p>15; Max 70hrs Custom</p> <p>Large parking by excellent sports facility/communal area which inc BBQ points, outdoor gym, course fishing, café, and walking including a waterside promenade towards town. Only 5 motorhomes can have lake views, but plenty of additional parking and plenty of lake view picnic spots. Town commerce 900m. arua.es Updated 2022.</p>		
			13	14	16

Explanation of LPG entry

1	3	4	5	8 15
POIO	A2	40	N42°26.182' W008°40.413'	Repsol. PO308/Avenida de los Encorados. 1.6km west of town, near Campelo. 6.30am-midnight.

FURTHER INFORMATION

What are Aires and what does Aire mean?

The English translation of 'Aire' is 'area'. Aires are commonly marked with a sign displaying a motorhome emptying waste water. Facilities differ significantly, but normally include a Service Point for water collection and disposal of waste fluids. Often there is no instruction about overnight parking, but it is assumed that 48hrs parking is tolerated because this is the normal duration unless, local signs or regulations are posted.



Monsaraz

Who can use Aires?

Law forbids caravans and tents from using the municipal Aires in this guide. The law permits motorhome users to park, cook, eat and sleep within the confines of their vehicle. This law actually enabled Aires to develop in the first place. The law does not permit camping activities at municipal Aires, such as winding out awnings or putting out tables and chairs. Many commercial Aires now have campsite licenses and camping is allowed. Please check the rules at commercial Aires when you arrive.

Vicarious Media champions responsible tourism

Motorhoming is booming in Spain and Portugal and many new Aires have opened. Some act as a control measure, but many more were partly paid for by the local community in the hope that extra tourism would help to keep the local shops, restaurants or fuel stations open. Over the past ten years motorhomes have become much bigger, typically occupying 50 per cent more space. Bear this in mind when you park during siesta in a sleepy town square or in an empty Aire, because you are unlikely to remain alone. When parking somewhere for free you should at least try to spend what you are saving in camping fees. We would all like to see the Aires network continue to grow and this will happen if motorhomers are perceived as valuable visitors.


We can all be valued visitors if we are RESPONSIBLE and:

- Respect the environment
- Elect to use un-crowded Aires
- Spend locally
- Park considerately
- Organise your recycling
- No camping behaviour or stuff
- Save water
- Impeccable behaviour
- Be quiet
- Leave before you outstay your welcome
- Evaluate your impact



FURTHER INFORMATION



Large motorhomes (RVs) >7.5m: Many Aires have been designed to accommodate motorhomes up to 7m long. The highlighted large motorhome symbol  identify Aires where the inspectors believe it should be possible for motorhomes over 7.5m to access the Aire if following the directions/signs. In many cases, parking large motorhomes is only possible when there are few or no other motorhomes. During busy periods Service Point access may not be possible. Remember to put your responsible tourist hat on when you are making decisions.

Directions: The directions are written to assist you with map navigation. As far as is practical, the simplest route, that is free of height and weight restrictions, has been selected. Do read them, as obstacles/issues are also identified. Where possible, you should follow signs and be aware of any obstacles or diversions.

GPS navigation: The GPS coordinates provided in this guide were taken on site and it should be possible to drive to the spot where they were taken. This does not mean to say that your navigator will get you there. Check the directions against your printed map and look at the suggested route on your navigator.

Be aware that there are three types of coordinates commonly used by publishers. The coordinates printed in this guide are in GPS format. Ensure that your Sat Nav is set to this type of coordinate. Other coordinate types either won't work or send you elsewhere! Should you not be able to use the coordinates, be aware that postcodes cover at least a 10km radius; therefore you will need to input the town and street, too. For help see www.vicarious-shop.com/blogs



SERVICE POINTS



No parking or access

Signs: When provided, it is advisable to follow the motorhome symbols to the Aire. Signs and symbols differ widely, so you will need to look carefully. Unfortunately, campsites have taken to displaying motorhome Aire symbols on their direction and advertising signs. Often there is no indication that the signs are referring to internal campsite facilities. It is safe to assume that all campsites have sanitary facilities and this deception is unwelcome.

Parking

Municipal Aires provide motorhome travellers with the freedom to come and go as they please. Generally Aires are unsupervised, thus it is not possible to reserve a space. They are designed to be convenient en-route stopovers rather than holiday destinations. In contrast, commercial Aires are privately run and normally have a reception, toilets, and electric hook-up.

Parking at municipal Aires may be impractical for many reasons and parking your motorhome may make the situation worse, so always consider others first. Use bays when provided. In unmarked parking areas it is normal to park close to your neighbour when necessary, so try to leave enough space for another motorhome to slot in if the need arises. Everybody enjoys a view, so share them as much as possible. Never park overnight on the Service Point or obstruct roadways.

It is not uncommon for municipal Aires to be commandeered during events. Where possible we have provided the municipality website URL so that you can see what events are planned.

SERVICE POINTS

Service Points

Service Points provide three main functions: to replenish fresh water, dispose of waste (grey) water and toilet (black) waste. Park on the Service Point only as long as is necessary to carry out exchange of fluids.

Most Service Points are “custom-built” by local craftsmen with inevitable differences in design and construction. Most are simple but durable and electricity is rarely provided. This has several benefits: they are rarely broken, they normally incorporate a lift or flip up ground level drain cover, they don't require tokens and are normally free to use all year round. Sometimes the layout of a Service Point is confusing or a facility is a little way from where you expect it to be. Euro Relais Service Points are common in Portugal.

ProteceX Service Points are increasingly common in Spain. They are occasionally coin-or-token operated, but more often they are touch screen and operated by credit card. The touch screen version may appear to be pay, but if you work your way through the menu they may be free. The flap covering the toilet emptying point is motor-operated and will not open without pressing the correct button/screen option.

CamperWCwash Service Points are common in northern Spain. Servicamper are common in north-eastern Spain.



ProteceX, Photo: Steve Burrell



Servicamper



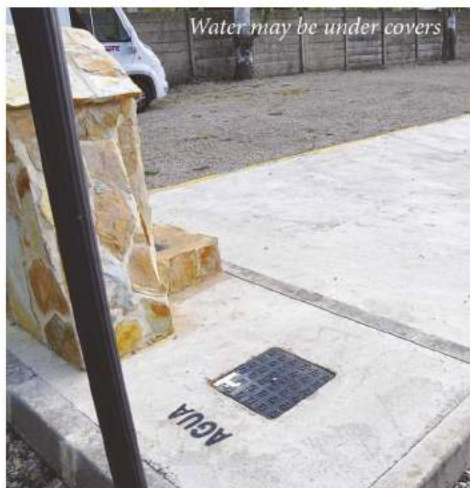
CamperWCwash

SERVICE POINTS

Drinking water: Spanish and Portuguese tap water is palatable, although occasionally it can be heavily chlorinated. We drank unfiltered tap water throughout our research trips with no ill effects. Service Points often have two water taps side by side, presumably to be used for different functions. Unfortunately the taps are rarely marked. Using disinfectant wipes or spray before drawing water will improve hygiene. Tap fittings vary widely in type and size. The diameter of the tap outlet may make hose filling impossible. Hozelock fittings are common.

During the winter taps may be turned off. Often there is a metal cover which conceals the stopcock. By turning the stopcock the tap can be activated. Remember to turn the stopcock off after use.

Taps may freeze overnight. Fill up in the evening to avoid disappointment.



Water may be under covers

Waste water: Generally a ground level drain is provided, often with a lift up section. These are normally well made and in good condition, but every care should be taken when driving onto these points not to cause any damage. Take a length of flexible pipe to direct water accurately.



Occasionally there is a lift up flap in the grid



SERVICE POINTS

Toilet disposal: Only use the designated facility, lifting or flipping up grids before emptying. This is sometimes marked with 'WC'. Marine tanks can be emptied at most Service Points. A flexible pipe will often be required to reach the drain, but should be used at all times to ensure accurate waste disposal. Do not rush toilet emptying, as spillage will occur. Ensure that any mess is cleaned up.



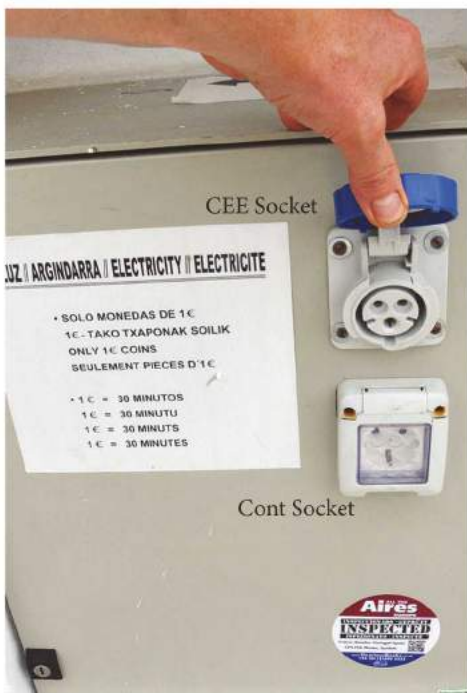
Lift up covers are common for toilet waste disposal



Maintain a hygiene gap



Sometimes water taps are clearly marked



CEE Socket

Cont Socket

Electricity: Electricity is rarely available on municipal Aires in Spain and Portugal. If it is available, expect to share. Commercial Aires often supply 6amp electricity. The plug socket type is described in this guide as either 'CEE' (left) for the blue outdoor grade plug or 'Cont' to describe the two pin domestic plug of Spain and Portugal (left bottom). Checking the polarity and presence of an earth is advised (below).



SERVICE POINTS

Euro Relais

Spain and Portugal have Euro Relais Service Points. Some may require tokens. Tokens provide a metered amount of water normally 100 litres. Electricity is normally 1 hour only. Do check the water taps because the toilet rinsing tap is normally free and sometimes the drinking water as well. A lift up cover at the base enables access to the toilet emptying chamber.



Euro Relais Minis are common in Portugal.

Service Points on motorways: Most motorway Service Points were found to be in poor condition or out of service. Extra vigilance should be taken due to the high risk of crime reported at motorway services. Stop no longer than is absolutely necessary.

Tortosa, Spain - Tortosa Campervan Parking Regulation



OBIDOS T D1 105

N39°21.384' W009°09.405' 2510



► Estrada da Capeleira. Follow N8, main route through Óbidos, towards Peniche and turn left at large roundabout by viaduct, sp 'Navalha' and signed. Drive past barriered car park (motorhomes banned from this car park) on left and Aire is on right where road passes through viaduct, signed.



🚐 22; €6/5pm-9am inc service; Free 9am-5pm; 8m bays 🏠 Custom; Service only €2; Honesty box

☑ This commercial, unmanned Aire is well located and maintained. Larger motorhomes



PENICHE D1 106

ASA Motorhome Park



ERICERIA 1 D1 107

N38°58.962' W009°25.060' 2655



► N247. Aire adj to N247 before roundabout as exit restort to north, signed. Enter through barrier.



🚐 16; €5/24hrs; Pay at barrier 🏠 Custom; €2; Inside barrier

☑ Small, open Aire on edge of surfing resort. Supermarket and surf shop adj. Ericeria is a famous surf resort and the famous Praia de Ribeira d'Ilhas surf beach is 550m down steps, good viewpoint from top of steps. Near Ericeria Camping, which also



SPAIN

SPAIN

PONTEVEDRA 1 B2 377

N42°25.993' W008°38.149' 36002



► N-541. Approach from East on N-541. At roundabout with Burger King turn right. In 600m at roundabout turn right, sp 'Vigo', 'Sanxenxo' and signed. Follow road for 500m, go straight over 1st roundabout then at 2nd roundabout turn right, signed. Turn left at next roundabout then left up one-way street to Aire on left, signed.



🚐 20; Max 72hrs 🏠 Euro Relais Junior

☑ Landscaped, open Aire adj to busy roundabout, road noise. Park adj with riverside walks. Historic centre 650m on other side of sports ground. Pets must be kept within motorhome. No generator use at night. www.visit-pontevedra.com Also see 378. Updated 2022.



Photos: Peter Walling



POIO B2 379

N42°26.241' W008°41.785' 36995



► Avenida da Seca. Follow sp 'Poio' and 'A Grove' onto PO-308. Stay on PO-308, follow sp 'A Grove'. Turn off PO-308, signed, and follow road down and round to Aire, signed.



🚐 10; Max 72hrs 🏠 Custom

☑ Designated parking in parallel bays adj to park with views from each of water beyond. Sculptures designed by nobel prize winner Adolfo Perez Esquivel. Views across and walks around bay. Slipway by Service Point. A lovely place to spend a few days. Large Poio monastery 1.3km. Inspected 2020.



PONTEVEDRA 2 B2 378

N42°25.388' W008°39.377' 36003



► Rua Rosalia de Castro. From north on AP-9 turn off at Junction 132A, sp 'Pontevedra (sur)'. Follow road onto dual carriageway. At roundabout turn right onto PO-12, sp 'Pontevedra'. Aire 1.2km in large car park on right, signed.



🚐 50; Max 24hrs 🏠 Custom; WC emptying beside water tap at rear

☑ The Aire is located in a large, potholed gravel car park adj to the dual carriageway and wide river. Suitable for any unit configuration. River views from roadside parking. Circus visits Aire 1st week of June. Town commerce 800m along promenade. www.visitpontevedra.com Reinspected 2020.



SANXENXO B2 380

N42°24.571' W008°51.702' 36990



Area Sanxenxo

► Barrio Bascuas. Exit Sanxenxo on PO-308 coast road towards O Grove. Follow road and, 1.3km after passing Hotel Atlantico on left, turn left, sp 'Praia de Pragueira'. Turn left, signed, and follow road straight on and through gateway to Aire.



🚐 20; €10/night; €15/night Jul-Aug; Inc service and elec; Grass parking 🏠 Custom; Service only €3; Unmetered elec €5/night (Cont/CEE); Outdoor showers

☑ A lovely family-run terraced Aire right on the beach, view obscured by trees. 3 grassy terraces lead away from the beach, but you can fall asleep to the sound of waves lapping at the shore from all of them. Direct access to beach. Bread service. autocampersanxenxo.com www.sanxenxo.es Updated 2022.



LPG/GPL

TOWN	Grid Ref	Map Ref	GPS	DIRECTIONS
O GRAXAL - A CORUNA	A2	38	N43°19.435' W008°21.745'	Repsol. AC-12 southbound, KM 589. Between Perillo and O Graxal.
A CORUNA	A2	39	N43°20.049' W008°24.169'	Repsol. AC-11 southbound, KM 2.3. 3km south of town. Open 24hrs.
PONTECESO DE CABANA	A2	40	N43°14.400' W008°54.100'	Repsol. AC-429. 500m north of town.
AP-9 ORDES	A2	41	N43°05.967' W008°20.950'	Repsol. AP-9, KM 39.5, northbound towards Ferrol. Northeast of town.
SANTIAGO DE COMPOSTELA	A2	42	N42°53.527' W008°31.974'	Repsol. N-550/Avenida do Cruceiro da Coruña, at roundabout. 2.5km northeast of town.
ARZUA	A2	43	N42°55.801' W008°08.653'	Repsol. N-547, KM 62. 1.7km east of town. Accessible from both sides.
LALIN	B2	44	N42°39.300' W008°06.700'	Repsol. Avenida Buenos Aires. 200m north of roundabout with N-525. 800m south of town.
POIO	B2	45	N42°26.182' W008°40.413'	Repsol. PO-308/Avenida de los Encoirados. 1.6km west of town, near Campelo.
VIGO	B2	46	N42°13.463' W008°42.694'	Repsol. N-120/Avenida de Madrid 66. South of town.
TUY	B2	47	N42°02.483' W008°38.867'	Repsol. N-550/Avenida de Portugal. At junction with N-551. 600m south of town. Open 24hrs.
LA CANIZA	B2	48	N42°12.400' W008°16.067'	Repsol. EP-5005. Near Junction 271 (southbound) and 272 (northbound) of A-52. South of town. Open 24hrs.
OURENSE - SAN CIBRAO DAS VINAS	B2	49	N42°18.783' W007°51.914'	Repsol. Rúa Ponte Sevilla, near junction with N-525. 2.2km north of town.
PONFERRADA	B3	50	N42°35.050' W006°37.519'	Repsol. A-6 westbound between Junctions 387 and 394. Northwest of town. Open 24hrs.
RIOS	B3	51	N41°58.948' W007°17.108'	Repsol. A-52 at Junction 143. 1km north of town. Accessible from both sides. Open 24hrs.
BENAVENTE	B4	52	N42°01.234' W005°41.888'	Camino de Santiago. Ctra de Alcubilla. 2.8km northwest of town.
ZAMORA	C4	53	N41°31.639' W005°42.000'	Repsol. N-122, KM 453.8. Near A-66 northbound Junction 277. Northeast of town. Accessible from both sides.
VEGA DE VALDETRONCO	C4	54	N41°34.537' W005°05.979'	Repsol. A-6 southbound, KM 193.8. 3km south of town. Open 24hrs.
CIUDAD RODRIGO	C3	55	N40°39.822' W006°26.284'	Repsol. N-620, KM 313.3. Near Junction 315 of A-62/E-80. Accessible from both sides. Open 24hrs.
SALAMANCA	C4	56	N40°58.707' W005°39.771'	Repsol. N-630/Avenida Raimundo de Borgoña 48, at roundabout. 1km north of town.
ESPINOSA DE LOS CABALLEROS	C4	57	N41°00.580' W004°39.915'	Repsol. A-6. Near Junction 119 of A-6. 1km west of town. Accessible from both sides.
AVILA	C4	58	N40°40.049' W004°41.128'	Repsol. Calle Jorge de Santayana. Near roundabout with Carretera Valladolid. 1.5km north of town.

TOWN	Grid Ref	Map Ref	GPS	DIRECTIONS
MIRABEL	D3	59	N39°52.970' W006°16.563'	Repsol. A-66 at Junction 495 (northbound) or 494 (southbound). Northwest of town. Open 24hrs.
NAVALMORAL DE LA MATA	D4	60	N39°52.422' W005°32.992'	Repsol. A-5. Near Junction 182 of A-5. South of town. Accessible from both sides. Open 24hrs.
TALAVERA DE LA REINA	D4	61	N39°57.201' W004°50.857'	Repsol. CM-4101. Accessible from both sides. Southeast of town.
CAZALEGAS	D4	62	N39°59.312' W004°42.215'	Repsol. A-5 northbound, KM 104.3, between Junctions 107 and 101. Open 24hrs.
COLMENAR VIEJO	D5	63	N40°38.383' W003°43.844'	Repsol. M-607 northbound, KM 28.2. 7km southeast of town.
MADRID	D5	64	N40°27.677' W003°45.458'	Repsol. A-6. Exit A-6 at Junction 8. Northwest of town. Accessible from both sides. Open 24hrs.
LAS ROZAS - MADRID	D5	65	N40°30.462' W003°52.606'	Repsol. A-6 northbound, KM 20.3. Exit at Junction 19 (northbound) or 20 (Southbound). 3.5km north of town. Open 24hrs.
VILLAVICIOSA DE ODON (North)	D5	66	N40°22.525' W003°52.296'	Repsol. M-50 northbound between Junctions 65 and 69. Northeast of town. Open 24hrs.
VILLAVICIOSA DE ODON (South)	D5	66	N40°22.616' W003°52.474'	Repsol. M-50 southbound between Junctions 69 and 65. Northeast of town. Open 24hrs.
MADRID	D5	67	N40°22.340' W003°38.320'	Repsol. Ctra Villaverde a Vallecas. Near Junction 19 of M-40. Southeast of town. Open 24hrs.
SAN SEBASTIAN DE LOS REYES	D5	68	N40°32.749' W003°36.388'	Repsol. A-1 northbound at Junction 19. 3km southeast of town. Open 24hrs.
AJALVIR - MADRID (North)	D5	69	N40°31.682' W003°28.857'	Repsol. Calle Barrionuevo, near roundabout junction with M-113. 800m south of town. Open 24hrs.
AJALVIR - MADRID (South)	D5	69	N40°31.607' W003°28.895'	Repsol. Calle Barrionuevo, near M-113 roundabout junction. 1km south of town. Open 24hrs.
GUADALAJARA	D5	70	N40°38.601' W003°08.569'	Repsol. Avenida Francia, at roundabout. Near Junction 58 of A-2, northeast of town. Open 24hrs.
ALCALA DE HENARES - MADRID	D5	71	N40°29.593' W003°23.190'	Galp. A-2 northbound between Junctions 28 and 30. 3km northwest of town. Open 24hrs.
SAN FERNANDO DE HENARES	D5	72	N40°26.991' W003°31.420'	Repsol. A-2 at Junction 17. 3km north of town. Open 24hrs.
RIVAS-VACIAMADRID	D5	73	N40°21.449' W003°33.539'	Repsol. A-3 southbound. Exit at Junction 12. Northwest of town. Open 24hrs.
BELINCHON	D5	74	N40°03.917' W003°04.917'	Repsol. A-3 at Junction 71. Northwest of town. Open 24hrs.
SESENA (North)	D5	75	N40°06.298' W003°38.756'	Repsol. A-4 northbound at Junction 36. East of town. Open 24hrs.
SESENA (South)	D5	75	N40°06.310' W003°38.706'	Repsol. A-4 southbound at Junction 36. East of town. Open 24hrs.

INDEX SPAIN

LORA DEL RIO	153	NEGREIRA	214
LORCA	123	NOGUEIRO	201
LORQUI	114	NOIA	328
LOS ALCASARES	109	O BARCO	190
LOS BANOS DE FORTUNA	114	O HIO	207
LOS FAYOS	290	OLITE	315
LOS GALLARDOS	325	OLMEDO	184
LOS NAREJOS	110	OLVERA	142
LOS NAVALUCILLOS	178,179	ONA	277
LOSAR DE LA VERA	175	ONATI	302
LUCIANA	88	ONDA	72
LUGO	232	ORDOKI	310
LUGONES	250	ORELLANA LA VIEJA	169
LUNTRA	198	OROPESA	176
MACENAS	125	ORTIGUEIRA	225
MALAGA	135,326	ORTIGUERA	239
MALPARTIDA DE CACERES	171	OSORNO LA MAYOR	332
MANLLEU	30	OSUNA	144
MARCHENA	153	OTSONDO	309
MARCILLA	316	OUIROL	227
MATAGORDA	326	OUTEIRO	207
MAZARICOS	215	OUTOMURO	201
MAZARRON	111,325	OVIEDO	250
MEDELLIN	168	OYON OION	282
MEDINACELI	287	PADRON	211
MEIRA	234	PAJARES	249
MERIDA	167	PALAMOS	37,38
MIERES	248	PALAS DE REI	194
MILLADOIRO	214	PALAZUELOS DE ERESMA	182
MIRANDA DE EBRO	279,332	PALENCIA	260,261
MONCOFA	78	PALMA DEL RIO	152
MONDONEDO	230	PAMPLONA	311
MONESTERIO	162	PANCRUDO	63
MONFERO	224	PANES	271
MONFORTE DE LEMOS	192	PAZOS	329
MONTBLANC	324	PENISCOLA	70,71
MONTEAGUDO DE CASTILLO	64	PERALADA	34
MONTILLA	150	PERALTA DE LA SAL	24
MONZON	21	PESOS	237
MORALEJA	173	PIEDRAHITA	181
MORELLA	65	PINEDA DE MAR	47
MORON DE LA FRONTERA	155	PINTO	84
MUGUEIMES	202	PLASENCIA	327
MULA	116	PLATJA D'ARO	39
MURCIA	113	PLATJA DE NULES	77
MUXIA	217	POBLADURA DE LA REGUERAS	253
NANCLARES DE LA OCA	295	POIO	209
NARON	330	POLA DE LAVIANA	247
NARROS DEL CASTILLO	184	PONFERRADA	253,254
NAVA	246	PONT	27
NAVARCLES	44	PONTE CALDELAS	200
NAVARRVISCA	180	PONTECESO	219
NAVIA	240	PONTEVEDRA	208

SPAIN INDEX

PORTOMARIN	193	SANTA COLOMA DE QUERALT	52
POSADA DE VALDEON	245	SANTA CRUZ DE CAMPEZO	294
PRATS DE LLUCANES	29	SANTA CRUZ DE MOYA	82
PRIEGO DE CORDOBA	147	SANTA CRUZ DE OLEIROS	221
PUEBLA DE DON FADRIQUE	119	SANTA EULALIA DE OSCOS	236
PUENTE SAN MIGUEL	271	SANTA MARGARIDA I ELS MONJOS	51
PUERTO LAPICE	86	SANTA MARIA DE HUERTA	288
QUART	41	SANTA POLA	106
QUINTANA DEL PUENTE	264	SANTANDER	273,274
QUINTANA REDONDA	287	SANTELICES	270
REBOREDO	196	SANTIAGO	213
REDONDELA	206	SANTILLANA DE CAMPOS	332
REQUENA	80	SANTOPETAR	121
REUS	58	SANXENXO	209,328
RIBADAVIA	200	SARINENA	21
RIBADEO	330	SARRIA	193
RIBADESELLA	244	SARRIGUREN	313
RIBAS DE SIL	191	SEGORBE	77
RIBASECA	255	SEGOVIA	182
RICOTE	113	SEVILLE	156,157
RINCON DE LA VICTORIA	135	SILS	40
RIOPAR	117	SIMAT DE LA VALLDIGNA	97
RIOSECO DE SORIA	286	SITGES	48,49
RIPOLL	28	SOPELA	298
ROBLEDO DEL BUEY	179	SORIA	333
RONCESVALLES	310	SOS DEL REY CATOLICO	315
RONDA	142	ST JAUME D'ENVEJA	68
ROQUETAS DE MAR	131	SUERA	75
ROTA	139	TABERNO	121
RUTE	146	TAFALLA	314
SABINANIGO	321	TALAVERA DE LA REINA	177
SADA	222	TAMALLANCOS	327
SAJAZARRA	279	TAMARITE DE LITERA	23
SALCEDA DE CASELAS	205	TAPIA DE CASARIEGO	239
SALDANA	259	TARAMUNDI	235
SALINAS	241	TARREGA	53
SAN CIBRAO	228	TARRES	54
SAN CLEMENTE	90	TAVERNES PLATJA	98
SAN CLODIO	191	TEO	210
SAN ESTEBAN DE GORMAZ	285	TEVERGA	252
SAN ESTEBAN DE LITERA	24	TIJOLA	120
SAN JAVIER	109	TINEO	251
SAN LEONARDO DE YAGUE	285	TOLOSA	304
SAN PEDRO DE LA RIBERA	241	TORDERA	46
SAN RAFAEL DEL RIO	69	TORELLO	30
SAN VICENTE DE LA SONSIERRA	293	TORQUEMADA	263
SANLUCAR DE BARRAMEDA	140	TORRALBA DE CALATRAVA	87
SANLUCAR DE GUADIANA	160	TORRE DE DON MIGUEL	173
SANT FELIU DE GUIXOLS	39	TORREBAJA	83
SANT HILARI SACALM	42	TORREVIEJA	108
SANT JOAN DE LES ABADESSES	28	TORRIJOS	180
SANT JULIA DE VILATORTA	31	TORROELLA DE MONTGRI	36
SANT PERE DE TORELLO	32	TORROX COSTA	134