



ООРЈАА®  
LIVE LIGHTLY

OXIDE



## ABOUT US

OORJAA<sup>®</sup>  
LIVE LIGHTLY

Oorjaa is an exploration of light that reflects our love of material, craftsmanship and sustainable living. Crafted with care, every lamp is alive with the inimitable individuality of the handmade. We subtract the superfluous, in both our aesthetic and our methods, evolving designs that are easy on the eye and the environment.

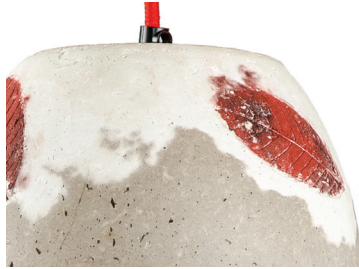
Oorjaa is a design studio that handcrafts sustainable materials into lamps for retail and custom lighting solutions for commissioned spaces and projects. Our roots lie in Bangalore's first handmade paper studio established in 1998 by Jenny Pinto. Today, we continue to be led by the idea of combining waste and natural fibre to create beautiful lights and are committed to our ethos of living lightly.



# THE OXIDE COLLECTION

Range inspired by the landscapes that change colors in seasons. The way clouds that race across the sky refashions each time and the leaves change colour according to time. An effervescent gradient of blue and red pigmented feather cement wrapped around simple form depicting continuity in discontinuity to give an abstract landscape effect with a dash of structure.

# MATERIAL SWATCHES



Leaf Foiling Red Oxide



Grey and Blue Ombre with White Powder Coated Frame



Mint Green, White and Blue Oxide Combination



Black Oxide with Brass Plated MS Frame



Grey and Blue Ombre with Black Powder Coated Metal Pegs



Red and Black Oxide Ombre



Red Oxide with Grey Cement



Black Oxide



Red Oxide Leafing with Grey and White Cement

"Each lamp is hand crafted, the cracks and spots are natural and part of the aesthetic"

# HOW TO ORDER



## Ether Pendant Lamp (Blue Gradation)

With metal wire fitting detail.



### Sizes



14 cm H  
22 cm D

### Order code

JPSP0521

Not inclusive of LED

Colour & gradient may vary from fixture to fixture due to the handmade nature of the product



Each product has a unique code.  
The following example shows  
how to order the product you  
need

Use the drawings to select  
the size.

Choose the codes from the list  
and place the order.

For example, to order Ether  
lamp would be JPSP0521

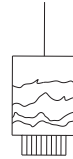


## Ether Pendant Lamp (Blue Gradation)

With metal wire fitting detail.



### Sizes



14 cm H  
22 cm D

### Order code

JPSP0521



Not inclusive of LED

Colour & gradient may vary from fixture to fixture due to the handmade nature of the product



Recommended  
LED 5-8 W  
Warm white

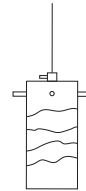


## Aura Pendant Lamp (Blue Gradation)

With metal fitting detail.



### Sizes



20 cm D  
20 cm H

### Order code

JPSP0522



Not inclusive of LED  
Colour & gradient may vary from fixture to fixture due to the handmade nature of the product



Recommended  
LED 5-8 W  
Warm white

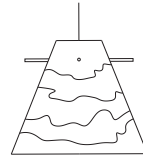


## Aglow Pendant Lamp (Blue Gradation)

With metal fitting detail.



### Sizes



30 cm D  
27 cm H

### Order code

JPSP0524



Not inclusive of LED

Colour & gradient may vary from fixture to fixture due to the handmade nature of the product



Recommended  
LED 5-8 W  
Warm white



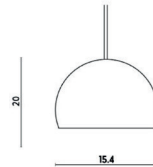


## Illuminate Pendant Lamp (Blue Gradation)



Pigmented feather cement.

### Sizes



15 cm H  
20 cm D

### Order code

JPSP0523



Not inclusive of LED

Colour & gradient may vary from fixture to fixture due to the handmade nature of the product



Recommended  
LED 7 W  
Warm white



## Lamar Pendant Cone Light

With blue and green color detail.



### Sizes



17 cm H  
18 cm D

### Order code

JPSP0640



Not inclusive of LED  
Colour & gradient may vary from fixture to fixture due  
to the handmade nature of the product



Recommended  
LED 5-8 W  
Warm white



## Lamar Pendant Cone Dark

With blue and green color detail.



### Sizes



17 cm H  
18 cm D

### Order code

JPSP0641



Not inclusive of LED  
Colour & gradient may vary from fixture to fixture due  
to the handmade nature of the product



Recommended  
LED 5-8 W  
Warm white

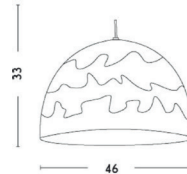


## Illuminate Relic Pendant Lamp (Blue Gradation)



Blue Fabric wire with MS black peg.

### Sizes



50 cm D  
30 cm H

### Order code

JPSP0718



Not inclusive of LED

Colour & gradient may vary from fixture to fixture due to the handmade nature of the product



Recommended  
LED 5-8 W  
Warm white

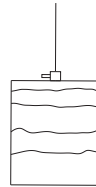


## Marina Pendant Lamp

With blue and green color detail.



### Sizes



15 cm L  
15 cm B  
18 cm H

### Order code

JPSP0638



Not inclusive of LED  
Colour & gradient may vary from fixture to fixture due  
to the handmade nature of the product



Recommended  
LED 5-8 W  
Warm white

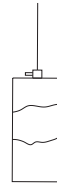


## Meryl Pendant Lamp

With blue and green color detail.



### Sizes



90 cm L  
90 cm B  
20 cm H

### Order code

JPSP0639



Not inclusive of LED

Colour & gradient may vary from fixture to fixture due to the handmade nature of the product



Recommended  
LED 5-8 W  
Warm white

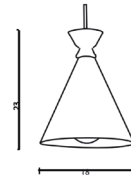


## Ida Pendant Lamp (Indigo)

With teak wood top detail



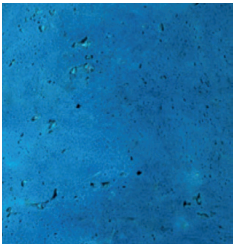
### Sizes



18 cm H  
22 cm D

### Order code

JPSP0730



Not inclusive of LED

Colour & gradient may vary from fixture to fixture due to the handmade nature of the product



Recommended  
LED 5-8 W  
Warm white

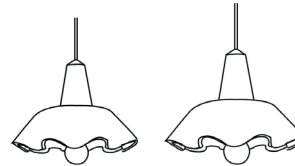


## Twill Pendant lamp (Indigo)

With teak wood top detail



### Sizes



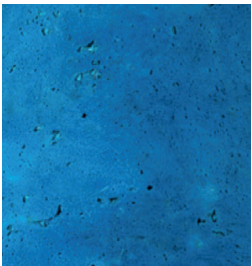
26 cm D  
18 cm H

29 cm D  
23 cm H

### Order code

JPSP0725

JPSP0726



Not inclusive of LED

Colour & gradient may vary from fixture to fixture due to the handmade nature of the product



Recommended  
LED 5-8 W  
Warm white



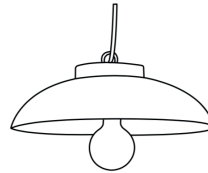


## Milo Pendant lamp (Indigo)

With teak wood top detail



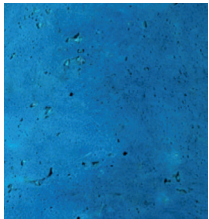
### Sizes



36 cm D  
21 cm H

### Order code

JPSP0724



Not inclusive of LED  
Colour & gradient may vary from fixture to fixture due  
to the handmade nature of the product



Recommended  
LED 5-8 W  
Warm white

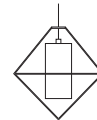


## Cubiform Block Spot Pendant Lamp (Indigo)



With metal wire fitting detail

### Sizes



14 cm L  
14 cm B  
30 cm H



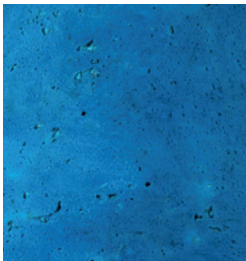
23 cm L  
23 cm B  
36 cm H



### Order code

JPSP0733

JPSP1494



Not inclusive of LED  
Colour & gradient may vary from fixture to fixture due  
to the handmade nature of the product



Recommended  
LED 5-8 W  
Warm white



## Cubiform Block Spot Pendant Lamp (Indigo)



With metal wire fitting detail

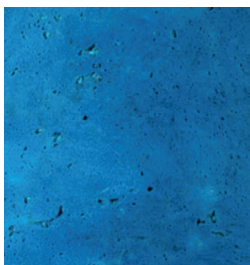
### Sizes



29 cm L  
29 cm B  
37 cm H

### Order code

JPSP0734



Not inclusive of LED

Colour & gradient may vary from fixture to fixture due to the handmade nature of the product



Recommended  
LED 5-8 W  
Warm white



RED OXIDE

---

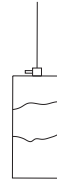


## Merlot Pendant lamp (Red Gradation)

White Feather Cement, Red & Black Pigment.



### Sizes



90 cm L  
90 cm B  
20 cm H

### Order code

JPSP0642



Not inclusive of LED  
Colour & gradient may vary from fixture to fixture due  
to the handmade nature of the product



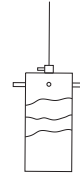
Recommended  
LED 5-8 W  
Warm white



## Aura Merlot Pendant Lamp (Red Gradation)

White Feather Cement, Red & Black Pigment.

### Sizes



90 cm L  
90 cm B  
20 cm H

### Order code

JPSP0717



Not inclusive of LED

Colour & gradient may vary from fixture to fixture due to the handmade nature of the product



Recommended  
LED 5-8 W  
Warm white

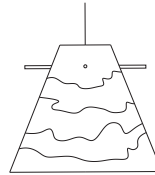


## Aglow Pendant Lamp (Red Gradation)

With metal wire fitting detail



### Sizes



30 cm D  
27 cm H

### Order code

JPSP0719



Not inclusive of LED

Colour & gradient may vary from fixture to fixture due to the handmade nature of the product



Recommended  
LED 5-8 W  
Warm white

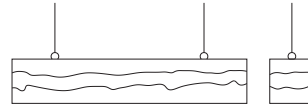


## Sangria Pendant Lamp

White Feather Cement, Red & Black Pigment.



### Sizes



60 cm H  
10 cm L  
10 cm B

### Order code

JPSP0643



Inclusive of LED  
Colour & gradient may vary from fixture to fixture due to the handmade nature of the product

Provided with  
20W  
T5 2ft LED



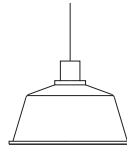


## Cresset Pendant Lamp (Merlot)

With teak wood top detail



### Sizes



25 cm D  
17 cm H

### Order code

JPSP0729



Inclusive of LED  
Colour & gradient may vary from fixture to fixture due  
to the handmade nature of the product



Provided with  
LED 5-8 W  
Warm white

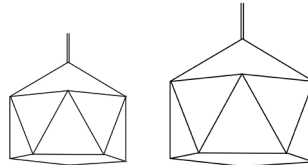


## Facet Pendant Lamp (Merlot)

With metal wire fitting detail



### Sizes



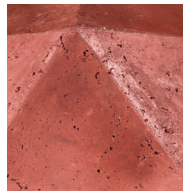
23 cm D  
19 cm H

34 cm D  
29 cm H

### Order code

JPSP0731

JPSP0750



Not inclusive of LED

Colour & gradient may vary from fixture to fixture due to the handmade nature of the product



Provided with  
LED 5-8 W  
Warm white

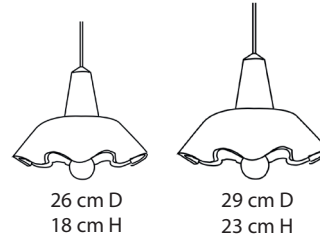


## Twill Pendant Lamp (Merlot)

With teak wood top detail



### Sizes



### Order code

JPSP0727

JPSP0728



Inclusive of LED  
Colour & gradient may vary from fixture to fixture due  
to the handmade nature of the product



Provided with  
LED 5-8 W  
Warm white

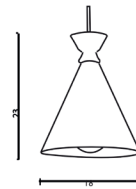


## Ida Pendant Lamp (Merlot)

With teak wood top detail



### Sizes



18 cm H  
22 cm D

### Order code

JPSP0732



Not inclusive of LED  
Colour & gradient may vary from fixture to fixture due  
to the handmade nature of the product



Recommended  
LED 5-8 W  
Warm white



MUSTARD

---



## Gong Pendant Lamp (Mustard Gradation)



With metal wire fitting detail

### Sizes



10 cm L  
10 cm B  
16 cm H

### Order code

JPSP0722



Not inclusive of LED  
Colour & gradient may vary from fixture to fixture due  
to the handmade nature of the product



Recommended  
LED 5-8 W  
Warm white



## Trapeze Pendant Lamp (Mustard Gradation)

With metal wire fitting detail

### Sizes



23 cm L  
23 cm B  
35 cm H

### Order code

JPSP0720



Not inclusive of LED  
Colour & gradient may vary from fixture to fixture due  
to the handmade nature of the product



Recommended  
LED 5-8 W  
Warm white

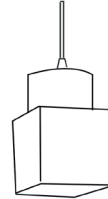


## Cubi Cask Pendant Lamp (Mustard Gradation)



With metal wire fitting detail

### Sizes



18 cm L  
18 cm B  
30 cm H

### Order code

JPSP0721



Not inclusive of LED

Colour & gradient may vary from fixture to fixture due to the handmade nature of the product



Recommended  
LED 5-8 W  
Warm white





## Bulbous Pendant Lamp (Mustard Gradation)



With metal wire fitting detail

### Sizes



20 cm H  
27 cm D

### Order code

JPSP0723



Not inclusive of LED  
Colour & gradient may vary from fixture to fixture due  
to the handmade nature of the product



Recommended  
LED 5-8 W  
Warm white



BLACK OXIDE

---

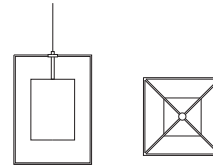


## Beatles Pendant Lamp

Feather Cement and Black Pigment detail.



### Sizes



17 cm L  
17 cm B  
23 cm H

### Order code

JPSP0633



Not inclusive of LED

Colour & gradient may vary from fixture to fixture due to the handmade nature of the product



Recommended  
LED 8-11 W  
Warm white

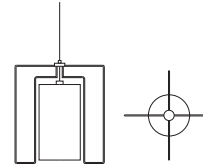


## Ebony Pendant Lamp

Feather Cement and Black Pigment detail.



### Sizes



25 cm L  
25 cm B  
30 cm H

### Order code

JPSP0630



Not inclusive of LED  
Colour & gradient may vary from fixture to fixture due  
to the handmade nature of the product



Recommended  
LED 5-8 W  
Warm white

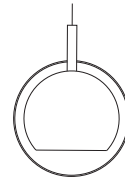


## Onyx Pendant Lamp

Feather Cement and Black Pigment detail.



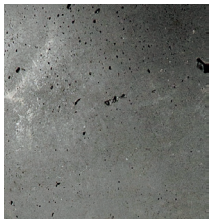
### Sizes



29 cm L  
29 cm B  
37 cm H

### Order code

JPSP0637



Not inclusive of LED  
Colour & gradient may vary from fixture to fixture due  
to the handmade nature of the product



Recommended  
LED 5-8 W  
Warm white

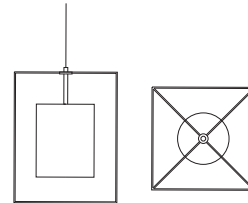


## Jade Pendant Lamp

Feather Cement and Black Pigment detail.



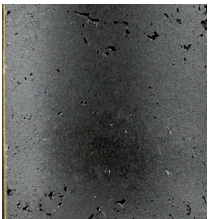
### Sizes



60 cm L  
26 cm B  
33 cm H

### Order code

JPSP0634



Not inclusive of LED  
Colour & gradient may vary from fixture to fixture due  
to the handmade nature of the product



Recommended  
LED 8-14 W  
Warm white

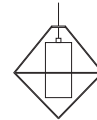


## Iris Pendant Lamp

Feather Cement and Black Pigment detail.



### Sizes



14 cm L  
14 cm B  
30 cm H



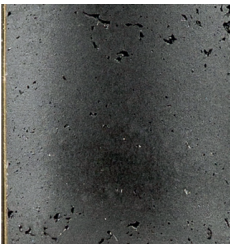
23 cm L  
23 cm B  
36 cm H



### Order code

JPSP0635(Small)

JPSP0636(Large)



Not inclusive of LED  
Colour & gradient may vary from fixture to fixture due  
to the handmade nature of the product



Recommended  
LED 8-11 W  
Warm white



MARBLED

---



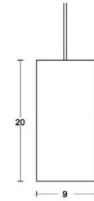


## Graphite Dappled Icicle Pendant Lamp

Handcrafted with innovative cement.



### Sizes



90 cm D  
20 cm H

### Order code

JPSP0858



Not inclusive of LED

Colour & gradient may vary from fixture to fixture due to the handmade nature of the product



Recommended  
LED 7 W  
Warm white

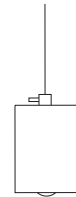


## Graphite Dappled Cubiture Pendant Lamp



Handcrafted with innovative cement.

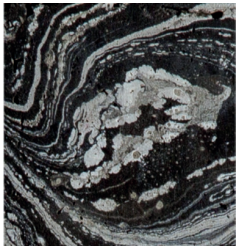
### Sizes



90 cm H  
12 cm D

### Order code

JPSP0857



Not inclusive of LED  
Colour & gradient may vary from fixture to fixture due  
to the handmade nature of the product



Recommended  
LED 4 W  
Edison Bulb - Warm

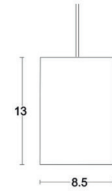


## Graphite Dappled Cask Pendant Lamp

Handcrafted with innovative cement.



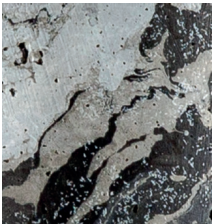
### Sizes



80 cm D  
13 cm H

### Order code

JPSP0856



Not inclusive of LED  
Colour & gradient may vary from fixture to fixture due  
to the handmade nature of the product



Recommended  
LED 4W  
Warm white

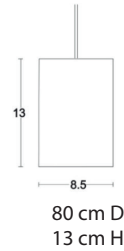


## Azure Dappled Cask Pendant Lamp

Handcrafted with innovative cement.

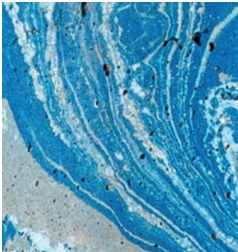


### Sizes



### Order code

JPSP0863



Not inclusive of LED

Colour & gradient may vary from fixture to fixture due to the handmade nature of the product



Recommended  
LED 4 W  
Warm white

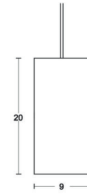


## Azure Dappled Icicle Pendant Lamp

Handcrafted with innovative cement.



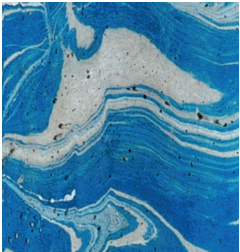
### Sizes



90 cm D  
20 cm H

### Order code

JPSP0864



Not inclusive of LED  
Colour & gradient may vary from fixture to fixture due  
to the handmade nature of the product



Recommended  
LED 7 W  
Warm white

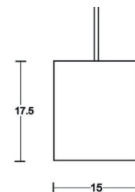


## Azure Dappled Canister Pendant Lamp

Handcrafted with innovative cement.



### Sizes

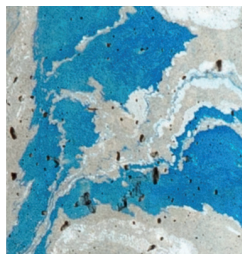


80 cm D

13 cm H

### Order code

JPSP0865



Not inclusive of LED  
Colour & gradient may vary from fixture to fixture due  
to the handmade nature of the product



Recommended  
LED 7 W  
Warm white

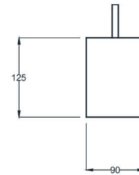


## Azure Dappled Cubiture Pendant Lamp

Handcrafted with innovative cement.



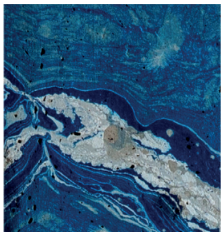
### Sizes



90 cm D  
12 cm H

### Order code

JPSP0862



Not inclusive of LED  
Colour & gradient may vary from fixture to fixture due  
to the handmade nature of the product



Recommended  
LED 4 W  
Edison Bulb - Warm

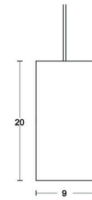


## Blossom Dappled Icicle Pendant Lamp

Handcrafted with innovative cement.



### Sizes



90 cm D  
20 cm H

### Order code

JPSP0860



Not inclusive of LED

Colour & gradient may vary from fixture to fixture due to the handmade nature of the product



Recommended  
LED 7 W  
Warm white



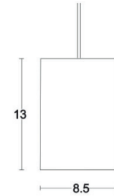


## Blossom Dappled Cask Pendant Lamp

Handcrafted with innovative cement.



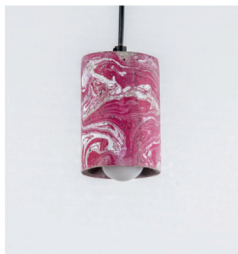
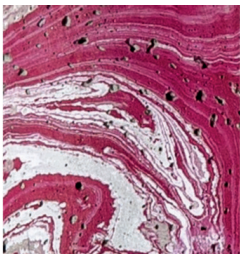
### Sizes



80 cm D  
13 cm H

### Order code

JPSP0859



Not inclusive of LED  
Colour & gradient may vary from fixture to fixture due  
to the handmade nature of the product



Recommended  
LED 4 W  
Warm white

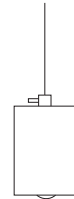


## Blossom Dappled Cubiture Pendant Lamp



Handcrafted with innovative cement.

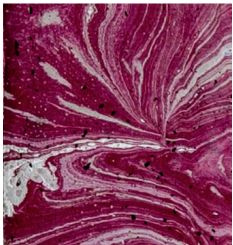
### Sizes



90 cm D  
12 cm H

### Order code

JPSP0861



Not inclusive of LED  
Colour & gradient may vary from fixture to fixture due  
to the handmade nature of the product

  
Recommended  
LED 4 W  
Edison Bulb - Warm



## Vineyard Harvest Pendant Lamp



Gold embossed leaf in the weathered imperfections of feather cement enriched by colour of the year "vine yard".

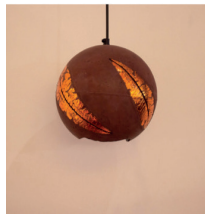
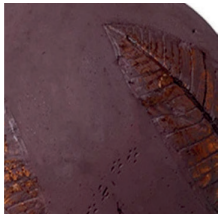
### Sizes



20 cm L  
20 cm B  
20 cm H

### Order code

JPSP1010



Not inclusive of LED  
Colour & gradient may vary from fixture to fixture due to the handmade nature of the product



Recommended  
LED 8-11 W  
Warm white



## Vineyard Mesh Pendant Lamp

Feather cement enriched by colour of the year "vine yard".



### Sizes



10 cm L  
10 cm B  
20 cm H

### Order code

JPSP1012



Not inclusive of LED  
Colour & gradient may vary from fixture to fixture due  
to the handmade nature of the product



Recommended  
LED 8-11 W  
Warm white

# CARE INSTRUCTIONS

Avoid direct contact with water.

Use a duster or damp cloth to clean.

Handle with care. Could crack or break if dropped.

Slight surface cracks may develop as a natural process of aging.

Recommended for indoor & partially covered outdoor spaces (covered balcony, patio etc.) - Color may fade over time if subjected to direct sunlight.

In case, you would like any changes to a current product or you have any repair requirement we are happy to assess and execute the same.

For any queries, please contact  
[pratyaksh@oorjaa.in](mailto:pratyaksh@oorjaa.in)



FEBRUARY 2023