

eelo[®]



CYGLO

Cycling Backpack with LED Signal Light
User Guide

Thank you

for purchasing the eelo cycling backpack.

In order to use and maintain this product correctly, please read this user guide completely.

This product has been specifically designed to keep cyclists safe at dusk/night time. When in use the bright LED signal display will alert motorists of your presence and next intention.

Special Instructions:

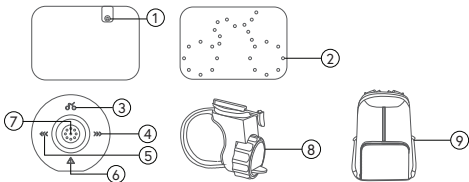
1. The LED signal lights are only for the purpose of alerting people behind/around you, they cannot be treated as traffic signal lights.
2. This product can also be used for other outdoor activities such as jogging etc.
3. All rights to the following statements are reserved by eelo.

What this package contains:

- One backpack
- One LED display
- One remote controller with adjustable plastic mount
- One charging micro-USB cable
- One user guide

Components

1. On/Off Button
2. LED Signal Light
3. Cycling Signal
4. Right-turning Signal
5. Left-turning Signal
6. Hazard Signal
7. Signal Selection
8. Remote Control Mount
9. Backpack



Specifications

Wireless frequency: 2.4GHz

Transmission distance: 3-5 meters

Remote Control

Battery: 3.7 V, 250 mAh rechargeable Lithium battery
(directly plugs into the USB power adapter to charge)

Working time: 20 hours

Charging: DC 5 V 500 mA

LED Display

3.7 V, 1150 mAh rechargeable Lithium battery
(directly plugs into the USB power adapter to charge)

Working time: 8 hours continuously

Charging: DC 5 V 500 mA

**For best performance, charge the LED display
and remote controller for 1.5 hours before use.**

Backpack

Material: Nylon

Product Size: 17" x 12" x 4.6"

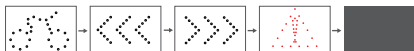
Weight: 365 g

LED Display:

Power on: Press the On/Off button.

Four different LED signal lights will light up one by one as shown below.

The LED display will then go into stand-by mode. It won't be re-activated until the remote controller is on.



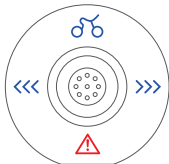
Power off: Press the On/Off button while the LED display is working normally. The LED signal lights will go off immediately.

Remote Control:

Power on: Slide the button back and hold for 5 seconds, 3 different signal icons will light up (Cycling/left/right)

Once the signals icons disappear, it is ready to use.

The LED display Power On signal light will also light up.



Power off: Slide the button back while in use and hold for 5 seconds.

How it works

There are two different working modes that work insync depending on how the remote control is operated:

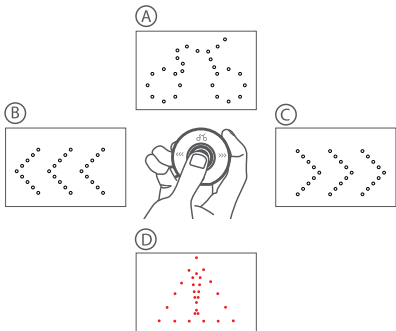
- Manual control
- Automatic Mode

Manual control mode:

Navigation arrows will display when you slide the button to the left or to the right.

White cycling-shape LED signal light will display when you push the button forward.

The hazard signal will display when you slide the button back.



A. Cycling Signal: White cycling-shaped LED signal lights.

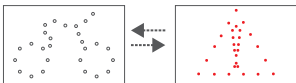
B. Left-turning Signal.

C. Right-turning Signal.

D. **Hazard Signal:** Use when you have stopped or there is an incident ahead.

Automatic modes:

After 7 seconds of remote control inactivity, automatic mode is activated by the motion sensor built inside the remote control.



The white cycling signal flashes when you're cycling normally.

If you are standing still or break suddenly, the motion sensor built inside the remote control will automatically trigger the the flashing hazard signal.

If there is no motion/remote control activity after 26 seconds the LED display and remote control will go into standby mode.

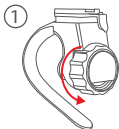
To re-activate the LED display, slide the remote control button in any direction.

While using an e-bike

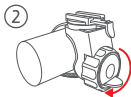
With an e-bike the motion sensor may not detect movements in automatic mode. We recomend you use the manual control mode with any e-bike.

How to install & remove remote controller

How to install:

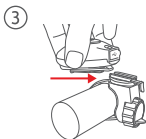


• Loosen RC mount



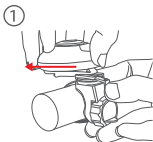
• Fix RC mount on handle bar

7

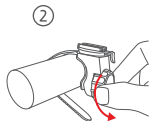


• Clip on

How to remove:



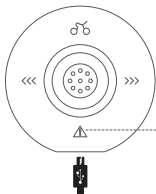
• Clip off



• Loosen RC mount

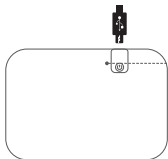
8

How to charge:



- Fully-charged indicator (Blue)
- Charging indicator (Red)
- Power Capacity indicator <30% (Red)

Micro-USB cable to charge



- Fully-charged indicator (Blue)
1
- Charging indicator (Red)
- Power Capacity <30% / Power on (Red)

FAQ

- Q. There is no red hazard light when you slide the remote control button backwards.
- A. The device has most likely run out of battery charge, recharge the remote control and try again.
- Q. There is no signal being displayed in the LED display.
- A. The device has most likely run out of battery charge, recharge the LED display and try again.

Contact Us

Should you need assistance using your CYGLO LED Backpack, please call or email our friendly technical support team who will be happy to help.

Email: support@eeloproducts.com

Phone: UK: 0800 652 7780

US: 408 - 872 - 6822

International: +44 800 652 7780

Address: eelo Products, Lakeside Technology Park
Swansea, Wales, UK, SA7 9FF.

Website: www.eeloproducts.com

eelo[®]

www.eeloproducts.com

