

REBATE-QUALIFYING

Design

socialwatersmart.com/rebates

SAVE UP TO

75%

On your outdoor irrigation in comparison to traditional lawn & landscaping.



CRAFTSMAN

LANDSCAPE DESIGN PLAN

A colorful range of deep hued shrubs provide a modern drought-tolerant evolution of this classic California style. Half-native, half-magic. Golden & red flowers and purple, variegated & olive leaved plants deliver a marvelous mix of color all year long.



DROUGHT TOLERANCE

Great. All plants can survive long hot dry spells on minimal irrigation after establishment (except mimulus). Drip irrigation loving.

SEASONAL CARE

Cut back grasses & blooming stalks whenever their flowering ceases. Prune Palo Verde in late winter & shape dwarf olives in Spring.

SOIL REQUIREMENTS

Light fertility improvements beneficial. Ensure good soil drainage for sundrops, sage, fuschia & manzanita.

WATER SMART FEATURE

DRY STREAM BED collects and slows water in the landscape. Allowing for deep rainwater infiltration.





MEXICAN MARIGOLD
Tagetes lemonii

ALKALI DROPSEED OR PACIFIC REEDGRASS
Sporobolus airoides or Calamagrostis nutkaensis

DWARF OLIVE
Olea 'Little Ollie'

TASMANIAN FLAX LILY
Dianella variegata

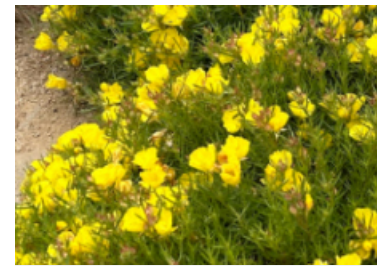


NATURALIZED GARDEN An elegantly wild feel. Occasional pruning of rangier shrubs like Mexican marigold, white sage and smokebush will lead to a cleaner look. Dwarf olives are easily shaped into ball form when pruned in early spring. Mix in taller stalked flowers for even greater wildlife interest.

FEATURE PLANTS

Mounding Shrubs & Billowing Trees

Designed for the richer color palettes and deeper forms of Craftsman architecture. The jewel-tones of purple smokebush and native ornamental grass intensify in fall. Yellow blooms occur sporadically all year with greatest show in spring-summer. Fuschia & Monkey flowers add color in late summer.



CALYLOPHUS DRUMM.
Sundrops



SALVIA APIANA
White Sage

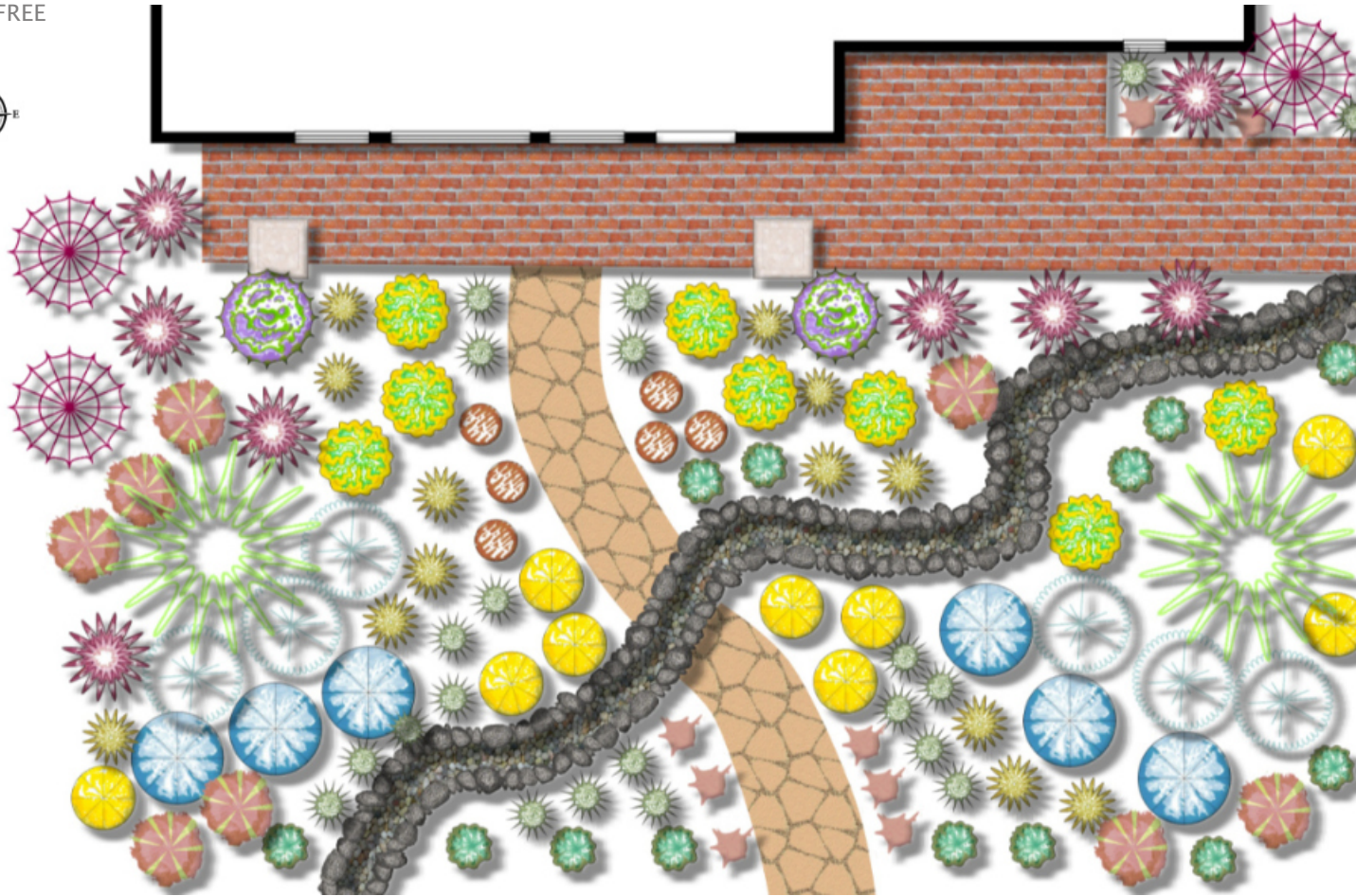


LAWN OPTION
Purple Smokebush



Craftsman Layout I

LAWN FREE



TOTAL YARD SIZE 1,680 sq.ft.
60 ft across x 28 ft deep

SOIL NEEDS

DRAINAGE Manzanita, Palo Verde Fuschia & White Sage are most sensitive. Locate closer to dry Stream bed channel in clay soils or fill bottom of planting holes with 2-3" of lava rocks.

FERTILITY Low-moderate fertility preferences for all plants.

CARE

PRUNING About half of the plants in this design benefit from cutbacks after flowering. Prune olives in spring, bloom stalks on sages & mexican marigolds closer to summer (after blooming ceases). Cut back grasses in late fall & Palo Verde in late winter. Palo Verdes are susceptible to wind blow if not well pruned. Consider staking in high wind corridors for first few years.

TIP

Keeping your drought tolerant plants on the drier side (without killing them) can double or even quadruple their lifespans. A *little* stress is good for these plants.

Plant Legend							
Symbol	Qty	Common	Botanical	Symbol	Qty	Common	Botanical
	12	California fuschia	Zauschneria		10	Alkali Dropseed	Sporobolus airoides
	7	Dwarf Olive	Olea 'little ollie'		2	Palo Verde	Parkinsonia 'desert museum'
	14	Groundcover Manzanita	Arctostaphylos 'Pacific Mist'		3	Purple Smokebush	Cotinus coggygria
	2	Hopbush	Dodonaea viscosa 'Purpurea'		8	Red New Zealand Flax	Phormium 'guardsman'
	17	Tasmanian Flax Lily	Dianella t. 'variegata'		8	Santa Barbara Daisy	Erigeron karvinskianus
	10	Mexican Marigold	Tagetes lemonii		8	White Sage	Salvia apiana
	6	Monkey Flower	Mimulus 'Jelly Bean'/Fiesta'		8	Sundrops	Calylophys drummondii



Craftsman Layout II



300 SQ.FT. NATIVE FESCUE LAWN



NATIVE FESCUE
300 sq.ft.
30' x 6-14'

TOTAL YARD SIZE 1,680 sq.ft.
60 ft across x 28 ft deep

SOIL NEEDS

DRAINAGE Manzanita, Palo Verde Fuschia & White Sage are most sensitive. Locate closer to dry Stream bed channel in clay soils or fill bottom of planting holes with 2-3" of lava rocks.

FERTILITY Low-moderate fertility preferences for all plants.

CARE

PRUNING About half of the plants in this design benefit from cutbacks after flowering. Prune olives in spring, bloom stalks on sages & mexican marigolds closer to summer (after blooming ceases). Cut back grasses in late fall & Palo Verde in late winter. Palo Verdes are susceptible to wind blow if not well pruned. Consider staking in high wind corridors for first few years.

Plant Legend							
Symbol	Qty	Common	Botanical	Symbol	Qty	Common	Botanical
	9	California fuschia	Zauschneria		13	Pacific Reedgrass	Calamagrostis nut.
	6	Dwarf Olive	Olea 'little ollie'		2	Palo Verde	Parkinsonia 'desert museum'
	13	Groundcover Manzanita	Arctostaphylos 'Pacific Mist'		3	Purple Smokebush	Cotinus coggygia
	2	Purple Hopbush	Dodonaea viscosa 'Purpurea'		7	Red New Zealand Flax	Phormium 'guardsman'
	21	Tasmanian Flax Lily	Dianella t. 'variegata'		8	Santa Barbara Daisy	Erigeron karvinskianus
	8	Mexican Marigold	Tagetes lemonii		6	White Sage	Salvia apiana
	6	Monkey Flower	Mimulus 'Jelly Bean'/Fiesta'		9	Sundrops	Calylophys drummondii

TIP

Keeping your drought tolerant plants on the drier side (without killing them) can double or even quadruple their lifespans. A *little* stress is good for these plants.



Dry Stream Bed

DRY STREAM BEDS make beautiful and functional garden features. Their rocky trenches collect and funnel rainwater slowly through the landscape. Giving it a chance to soak in deeply.

They are made up of a narrow trench (8-18" deep) lined with larger rocks and filled with small river pebbles or gravel. The occasional large rock in the middle helps to slow water in heavy rain events.



Where to Place Dry Stream beds

Meander dry stream beds in gentle curves through your landscape. Ensure their base is relatively level with a gentle downslope in the direction you wish rain water to flow. Connect their tops to downspouts, driveway overflows or natural drainages.

OVERFLOW

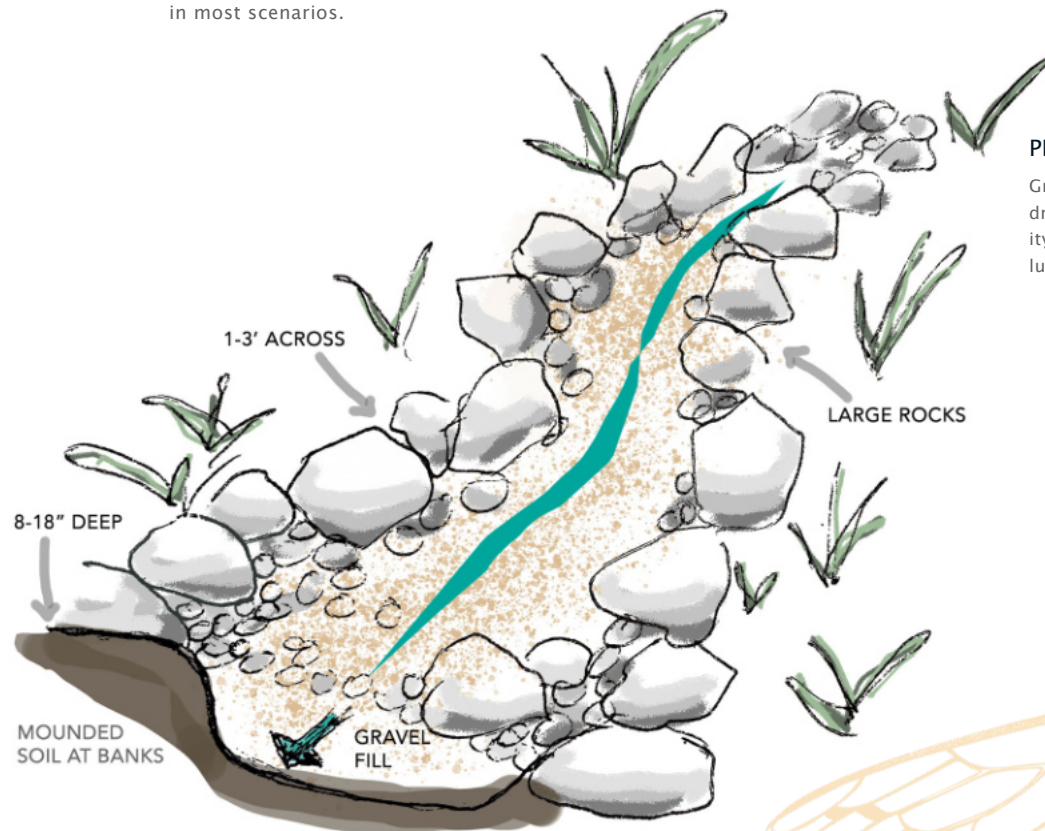
An outlet or overflow to a drain, gutter or absorption pond (i.e. rain garden) at the end of your dry stream bed is a good idea in most scenarios.

DIG A CURVY TRENCH

Start your trench narrower and shallower at the top and slowly expand the width and depth progressively toward the bottom for the most natural look. Mound excavated soil flatly on the banks.

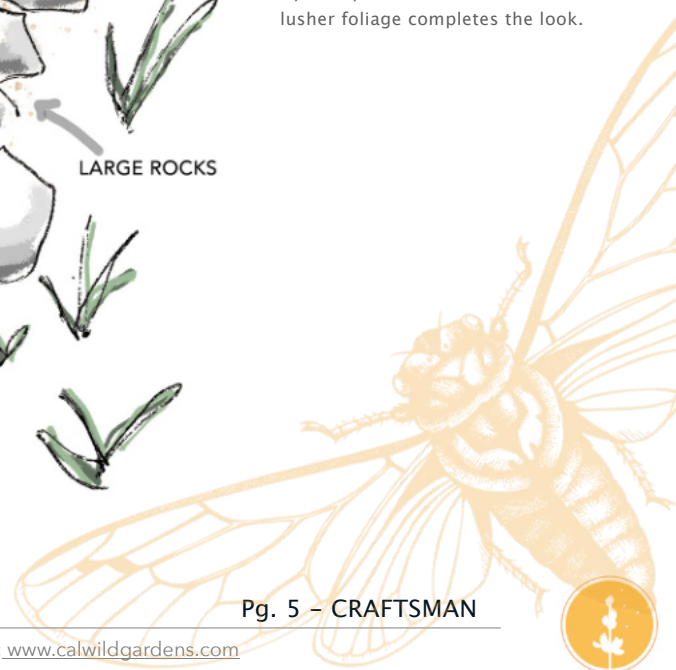
PLACE LARGE ROCKS

Using rocks of 6" size or greater, build up the banks of your stream. This supports its shape and prevent erosion. Place a few larger rocks near the center of the channel here and there. Especially where slopes increase rapidly. Fill all other areas of trench with river rocks or sharp gravel to a few inches below grade.



PLANT BANKS

Grasses and plants sensitive to drainage appreciate close proximity to dry streambeds. A little lush foliage completes the look.



CALIFORNIA SILVER NATIVE FESCUE

No-mow native lawn sod. Prefers morning water & thrives in part shade.



Plant the Difference

Plants have a big impact on our climate. Making the difference between a desert and an oasis. Thankfully there's a multitude of beautiful ones that thrive on less water!



How to Shop Nurseries

Always start with your biggest plants first! It's easiest to work backwards in the garden. Few nurseries will have everything, so be prepared to check all your favorite spots. And maybe find a new one that specializes in natives & drought tolerant too.

How to Order Online

To shop individual plants online try Plants Express, Annie's Annuals or High Country Gardens.

To order bulk visit [Calwildgardens.com/greeneryards](https://www.calwildgardens.com/greeneryards) and enter the total square footage of the garden or lawn you wish to purchase. Free Shipping to Sierra Madre on weekday delivery date of choice for orders over \$750.



PALO VERDE

Detests mulch at base. Available in single (standard) and multi trunk for a variety of looks. Foundation friendly.

GROUND COVER MANZANITA

Minimize watering in summer (without killing). Some supplemental watering in winter can support growth rate.

CALIFORNIA FUSCHIA

Summer bloomer can survive on 1x a month summer water. Prefers rocky soil & full sun. Cut back to the ground in fall when blooms are spent.

PROUDLY BROUGHT TO YOU BY



CALIFORNIA
WILD GARDENS



Shop plant bundles & lawn online at:
[Calwildgardens.com](https://www.calwildgardens.com)

Pg. 6 – CRAFTSMAN