

REBATE-QUALIFYING

## Design

Check eligibility & apply  
at: [socialwatersmart.com/rebates](https://socialwatersmart.com/rebates)

SAVE UP TO

# 65%

On your outdoor irrigation needs in  
comparison to traditional lawn &  
landscaping.



## CONTEMPORARY

LANDSCAPE DESIGN

A clean sweep of fall-blooming grass fronts this Mediterranean and California native blend. Foliage color variations in blue, green and gold set off the subtle accents or large succulents or sages. While lemon and olive trees provide shade and elegance.



WHITE MUHLY / SUCCULENT OPTION



### DROUGHT TOLERANCE

Very good – especially succulent option. Grasses are least drought resistant but can survive restrictions if well established.

### SEASONAL CARE

Prune/shape rosemaries freely in Spring & Summer. In early winter. Cut back grasses by more than half and Mexican sages by 1/3.

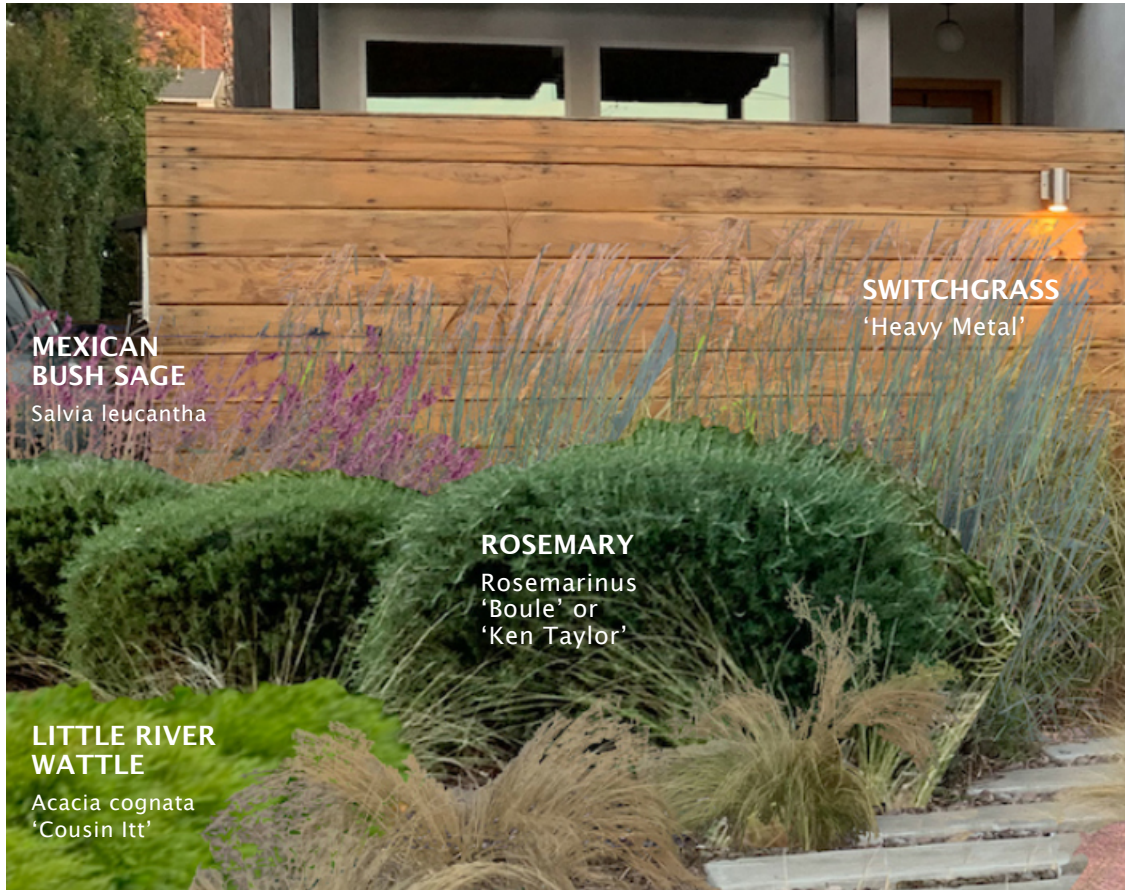
### SOIL REQUIREMENTS

Light ammendments beneficial (especially a 50/50 mix of compost & DG). Grasses thrive with excellent drainage light shade.

### WATER SMART FEATURE

SWALE a long narrow trench backfilled with gravel or woodchip serves as a path in dry seasons & captures rainwater in wet.



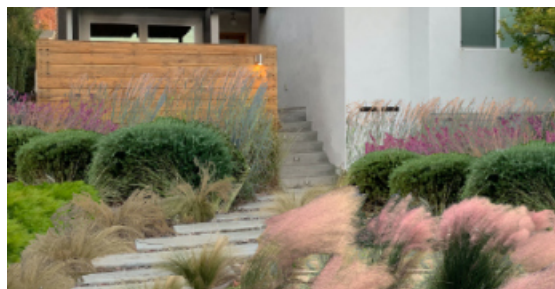


**MEXICAN BUSH SAGE**  
Salvia leucantha

**SWITCHGRASS**  
'Heavy Metal'

**ROSEMARY**  
Rosemarinus  
'Boule' or  
'Ken Taylor'

**LITTLE RIVER WATTLE**  
Acacia cognata  
'Cousin Itt'



PINK MUHLY / MEXICAN SAGE OPTION



PINK MUHLY vs. WHITE MUHLY

This design comes with two Different color palette options.

Choose a more minimalist design with 'White Cloud' muhly grass and succulents (Pages 1 & 4). Or go electric with 'Pink Mist' Muhlenbergia, mexican bush sage and acacia 'Cousin Itt' (shown above). All grasses go dormant or get cutback heavily in winter. Add low-growing groundcovers or bulbs underneath where better winter interest is desired.

FEATURE PLANTS

# Fall-Blooming Ornamental Grasses

Gorgeous ornamental grasses give a smooth look in spring and a show-stopping splash in fall. Their dramatic cycle is a welcome mark of the seasons in a climate where autumn leaves often arrive late. Native hairgrass (*Deschampsia caes.*) isn't always available so use *Bouteloua gracilis* or *Carex pansa* if needed. Avoid invasive Mexican hairgrass (*Nassella ten.*) and Feather grass (*Pennisetum*).



DESCHAMPSIA CAES.  
'Golden Hanging'



SWITCHGRASS  
'Heavy Metal'

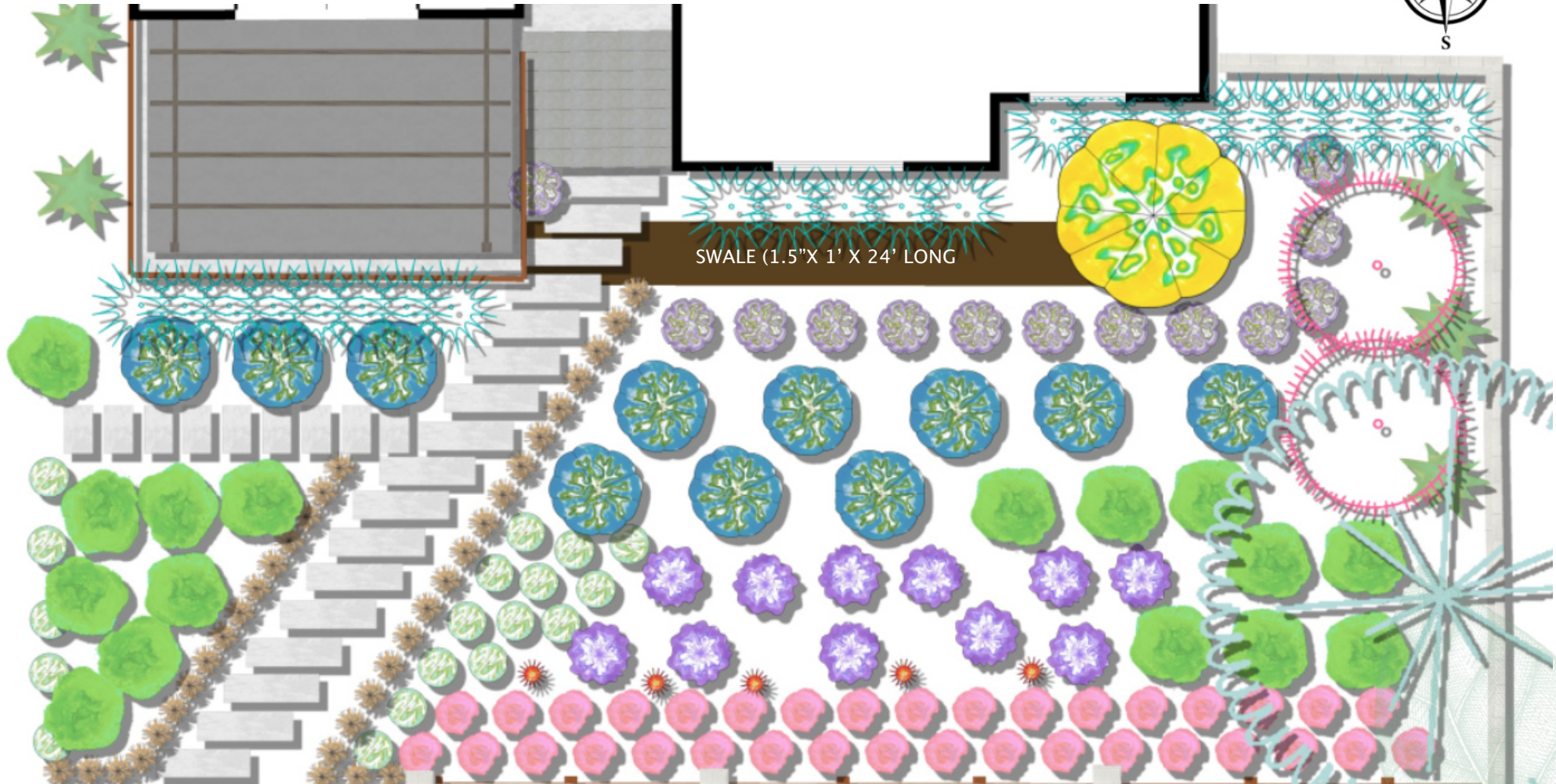


MUHLENBERGIA  
'Regal Mist'



# Layout I

LAWN FREE



PLANT LEGEND							
Symbol	Qty	Common	Botanical	Symbol	Qty	Common	Botanical
	5	Bearded Iris	<i>Iris germanica</i> - double blooming		1	Lemon Tree	<i>Citrus x limonia</i>
	11	Groundcover Ceanothus	<i>Ceanothus</i> g. 'anchor bay'		1	Olive Tree (fruitless)	<i>Olea europaea</i>
	18	Yarrow	<i>Achillea millefolium</i>		5	Pencil/Firestick Cacti	<i>Euphorbia tirucalli</i>
	2	Western Redbud	<i>Cercis occidentalis</i>		35	Pink Cloud Muhly	<i>Muhlenbergia capillaris</i>
	36	Gramma or Hanging hair grass	<i>Bouteloua</i> or <i>Deschampsia cespitosa</i>		11	Rosemary 'Boule'	<i>Rosemarinus officinalis</i>
	16	Little River Wattle	<i>Acacia</i> 'cousin itt'		22	Switch Grass	<i>Panicum</i> 'Heavy Metal'
	17	Mexican Bush Sage	<i>Salvia leucantha</i>				

## CARE

**WATERING** Water deeply than allow plants to dry out well between waterings.

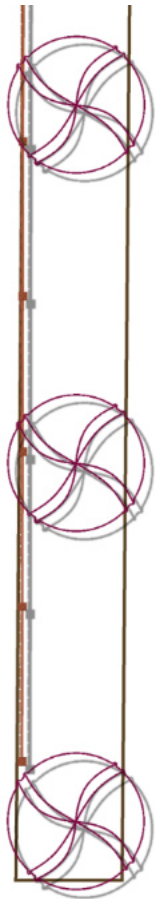
**PRUNING** Prune rosemary freely in spring & summer but not winter. Cut back large grasses by 2/3 in winter.

**FEED** Citrus 2x a year. Light doses of microbially active compost at least 1x a year for other plants.



# Layout II

800 SQ.FT. PHYLA NODIFLORA LAWN

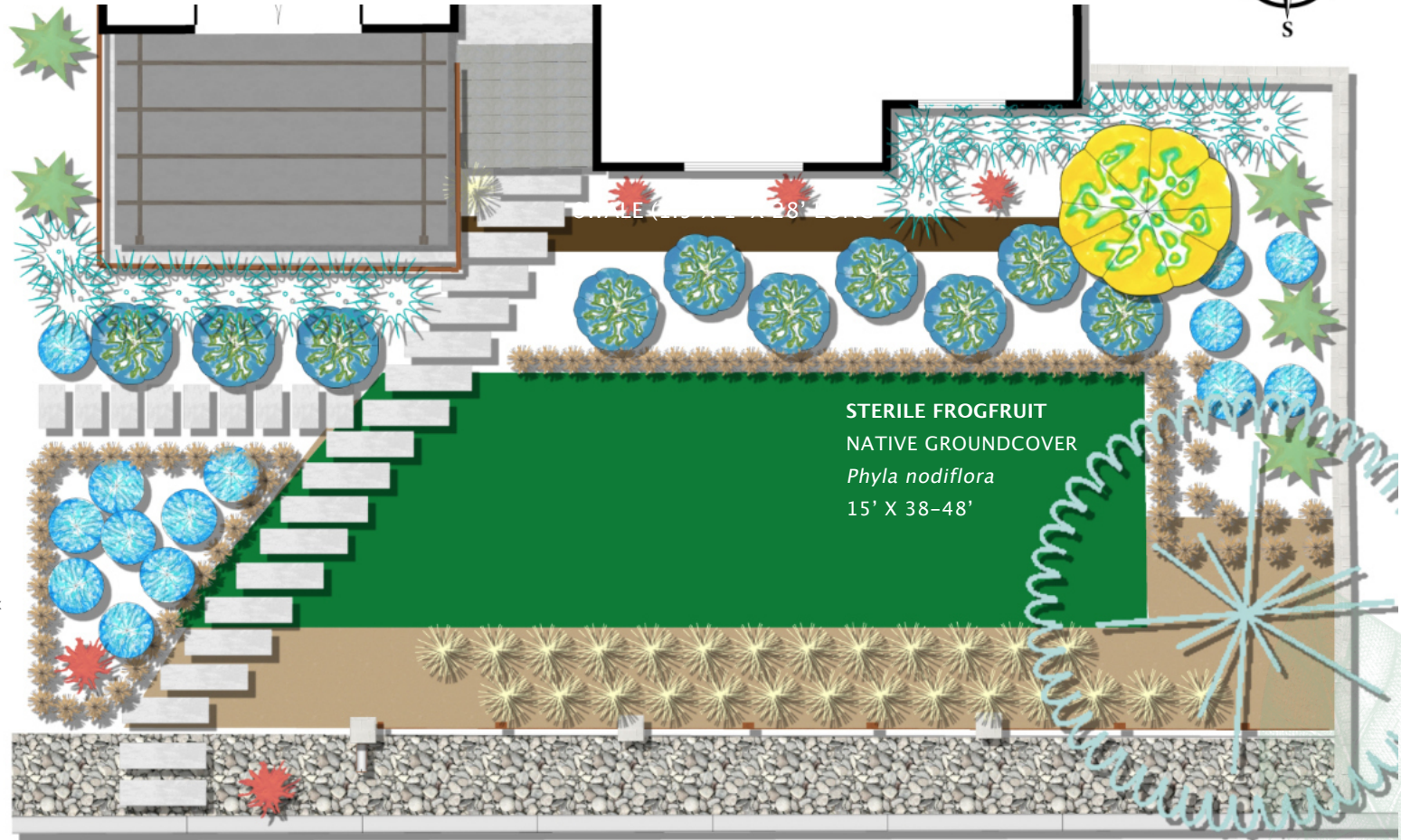


## PLAN DIMENSIONS

2850 sq.ft. Frontyard. 36' x 75' (not including driveway & driveway planter).

## PLANT SPACING

12-18" Small Grasses  
2'6" - 3'6" Large Grasses  
4-5' Rosemary



## Plant Legend

Symbol	Qty	Common	Botanical	Symbol	Qty	Common	Botanical
	14	Blue Euphorbia	Euphorbia 'wulfenii'		5	Pencil Cacti	Euphorbia tirucalli
	74	Gramma Grass or Hair Grass	Bouteloua or Deschampsia cespitosa		10	Rosemary 'Boule'	Rosemarinus officinalis
	5	Hesperaloe	Hesperaloe parvifolia		19	Switch Grass	Panicum 'Heavy Metal'
	1	meyer Lemon (dwarf)	Citrus x limonia		3	Western Redbud	Cercis occidentalis
	1	Olive Tree 'Manzanillo'	Olea europaea		28	White Cloud Muhly Grass	Muhlenbergia 'white cloud'

## CARE

**WATERING** Water deeply than allow plants to dry out well between waterings.

**PRUNING** Prune rosemary freely in spring & summer but not winter. Cut back large grasses by 2/3 in winter.

**FEED** Citrus 2x a year. Light doses of microbially active compost at least 1x a year for other plants.

NOTE: All Plants (especially lawn) require 4-6 weeks of intensive irrigation to begin establishing in the landscape. Full establishment at 1 year of age.



# Swales

While swales may appear deceptively simple, they are the most ubiquitous rainwater collection feature out there. A swale is a 1' deep flat-bottomed trench that's backfilled with woodchips or gravel. It functions as a path when not actively in use. Extra soil is mounded on the sides (especially the downhill one) then planted with deep rooters to stabilize.



**SWALE**  
Backfilled with woodchips

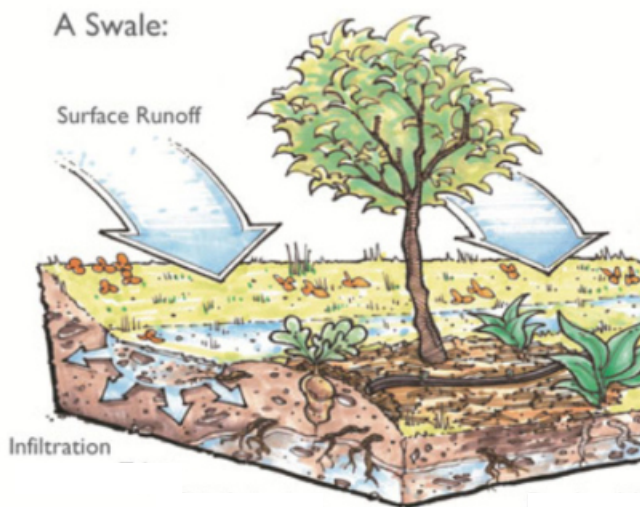
### GREEN MANURE

A seeded clover cover crop helps to stabilize and improve fertility of freshly mounded soil.



## Where to place Swales

Swales are built on contour (running longways across any slope). Place them near the highest part of your property to allow for maximum distribution in your landscape.



### SLOPE AWAY FROM HOME

Slow down rainwater on its way out of your yard. And allow it to more deeply irrigate your landscape. Ensure swales are placed downslope or an adequate distance away from your foundation.

A **berm**, or soil mound, is made on the downhill side of your swale using the soil from the trench excavation. This creates a premium raised planting area.

To **use** your swale, let the rain do it's thing. Or run a pipe from your rain gutters, rain barrel or grey water outlet to one end, keeping the outlet under the woodchip. Ensure there is an overflow allowance or spillway at the other end.

After a few years, dig out partially composted **woodchip** from your swale and apply as a nutrient rich mulch to the surface of your garden beds. Refill with fresh woodchip. Seed Wine Cap (king strobalaria) mushroom mycellium in woodchip fill if you like!

In **hottest** climates with least available water, planting directly into the swale is advised for more sensitive or food producing plants.

The **more** swales you build, the more water you'll capture in the landscape. If you really like to dig, build them up to every 5 feet.



## STERILE FROGFRUIT – GROUNDCOVER LAWN

*Phyla nodiflora* Likes 2–3 thorough waterings every 2 or 3 weeks. One mow a month keeps it fluffy & eliminates flowering (but it's optional). Pet-friendly.



## Plant the Difference

Plants have a big impact on our climate. Making the difference between a desert and an oasis. Thankfully there's a multitude of beautiful ones that thrive on less water!



### MUHLENBERGIA GRASSES

Western North American cultivar that stays a low clump in spring-summer and shoots up fluffy panicles in fall.



### MEXICAN BUSH SAGE

Fast-growing sage with part shade tolerance. Gets leggy without pruning. Expect to replace every 3–5 years (but can live longer with adequate stress).



### HESPERALOE

Native soft-spined blooming cactus that hummingbirds adore. Cut off flower spikes at base when blooms are spent if seedpods are undesirable.

PROUDLY BROUGHT TO YOU BY



CALIFORNIA  
WILD GARDENS

## How to Shop Nurseries

Always start with your biggest plants first! It's easiest to work backwards in the garden. Few nurseries will have everything, so be prepared to check all your favorite spots. And maybe find a new one that specializes in natives & drought tolerants too.

## How to Order Online

To shop individual plants online try Plants Express, Annie's Annuals or High Country Gardens.

To order bulk visit [Calwildgardens.com/greeneryards](http://Calwildgardens.com/greeneryards) and enter the total square footage of the garden or lawn area you wish to purchase. Free Shipping to Sierra Madre on weekday delivery date of your choosing.



SHOP PLANT BUNDLES ONLINE

[Calwildgardens.com](http://Calwildgardens.com)

Pg. 6 – CONTEMPORARY