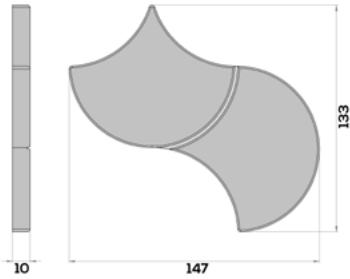


# PWANI TILE

## TECHNICAL DATA SHEET



Line Drawing (mm)



Dimensions finish: Kiepersol



Silk finish: Kiepersol

### TECHNICAL DATA

<b>DIMENSIONS</b>	147mm x 133mm		<b>THICKNESS</b>	10mm
<b>AREA</b>	100 tiles / m <sup>2</sup>	± 0.01 m <sup>2</sup> / tile	<b>WEIGHT</b>	± 25.6 kg / m <sup>2</sup>
<b>COLOURS</b>	P0L   P1X2   P30   P35   P36   P37   P38   P42   P45   P46   P47   P55   P58   P63   P64   P65   P66   P68   *			
<b>FINISH</b>	Silk   Dimensions   Adorn			
<b>MATERIAL</b>	Limesite™ (high performance, integrally coloured concrete)			
<b>SUITABILITY</b>	Indoor   Outdoor   Wet Areas <sup>#</sup>		<b>USE</b>	Wall   Floor

### PACKAGING

BOX DIMENSIONS			BOX B01			FULL PALLET DIMENSIONS			PALLET		
L	W	H	tiles	area	weight	L	W	H	boxes	area	weight
155 mm	172 mm	250 mm	48	0.48 m <sup>2</sup>	± 12.29 kg	1000 mm	1210 mm	631 mm	84	± 40.32m <sup>2</sup>	± 1032 kg

\*Colour variance is an inherent property of our products as they are handmade and colour may vary from tile to tile. The onus is on the client to confirm colours by looking at physical samples and completed projects. Custom colour development available on request. Please refer to the website for more information.

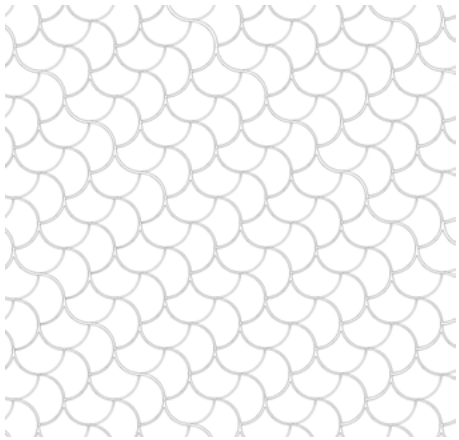
<sup>#</sup>Wolkberg recommends applying a protective nano coat layer of Wolkseal Diamond over tiles and grouting post installation. Please refer to the website for Care & Maintenance details.

Wolkberg recommends implementing a simple maintenance program in public spaces. For more information email: [design@wolkberg.com](mailto:design@wolkberg.com)

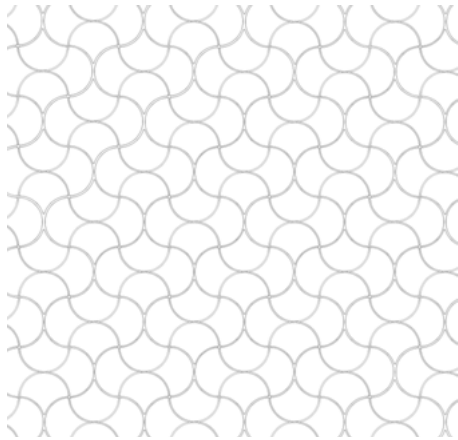
*Disclaimer: All data is based on averages as our products are handmade and can vary from tile to tile.*

# PWANI TILE TILING LAYOUT POSSIBILITIES

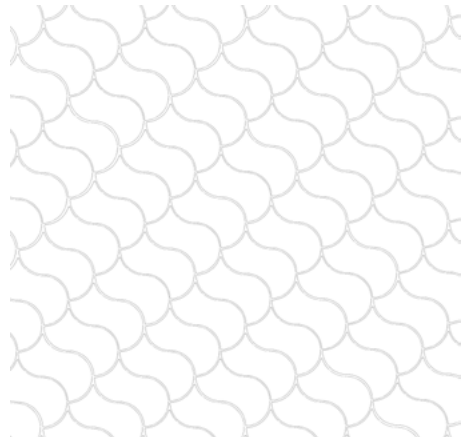
---



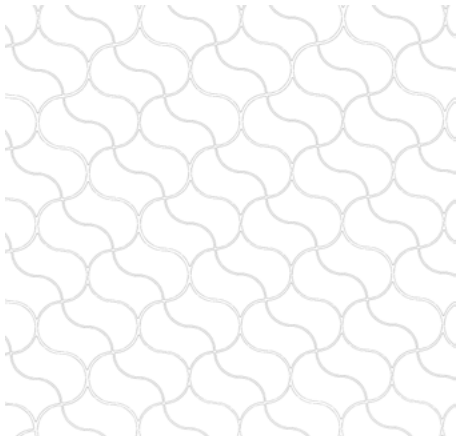
1. Silk finish



2. Silk finish



3. Dimensions finish



4. Dimensions finish

These tessellations have been selected for their visual effect and beauty. We have taken into account tile dimensions and tile variations. We're trying to take the mystery out of bespoke tiling - if you have any feedback please get in touch.

If you need further assistance, kindly email: [design@wolkberg.com](mailto:design@wolkberg.com) or [design1@wolkberg.com](mailto:design1@wolkberg.com)

*Copyright of tile style/dimensions and tessellations belongs to Wolkberg Casting Studios (Pty) Ltd*