

# STEWART JONES

wall  
WALL  
SPACE  
& pac

## (RE)TRACE : NEW PAINTINGS



# STEWART JONES

## BIOGRAPHY

Stewart Jones' work focuses mainly on the sidelines of the city and the relationships of light and shadows within the urban environment. His subjects are the often overlooked, seemingly unimportant places and moments within the cities he paints. His unique compositions - the unexpected angles and perspectives, the shadows and light between buildings - are described with a passionate and confident touch, making these spaces instantly familiar, and yet new and exciting all at once. Stew holds a 4 Yr. Associate Diploma in Drawing & Painting from the Ontario College of Art Toronto (1995) and graduated from Sheridan College's Classical Animation program Oakville (2001).

Jones is an active founding member of The Canadian Art Collective and City Field North Shore painting collectives and his work can be found in several corporate collections nationwide. He has been an instructor at the Baxter Arts Centre, Bloomfield ON since 2019.

Jones has gallery representation in Ottawa, Waterloo & Prince Edward County. He currently lives & paints in Prince Edward County, Ontario

# (RE)TRACE : NEW PAINTINGS

## ARTIST STATEMENT

*Capturing a sense of place; engaging with the idea that we are here now.* These are the thoughts and concepts that motivate me towards a particular space and inspire a curiosity in that time and place. I seek a truth in the environment in which we live. I want to represent the spirit of the city. What happens in the shadows, and the shapes created by a cut of late afternoon light, all play out as the main elements of my compositions. Negative shapes in both sky and structure form the compositional backbone of my paintings. These create the balance that I believe is needed to put the viewer in a place of familiarity and in turn compose the narrative. You are now here and I want to leave you with this experience, for you to create and extend this narrative on your own.








*ESCAPE IS @ HAND\_NYC*

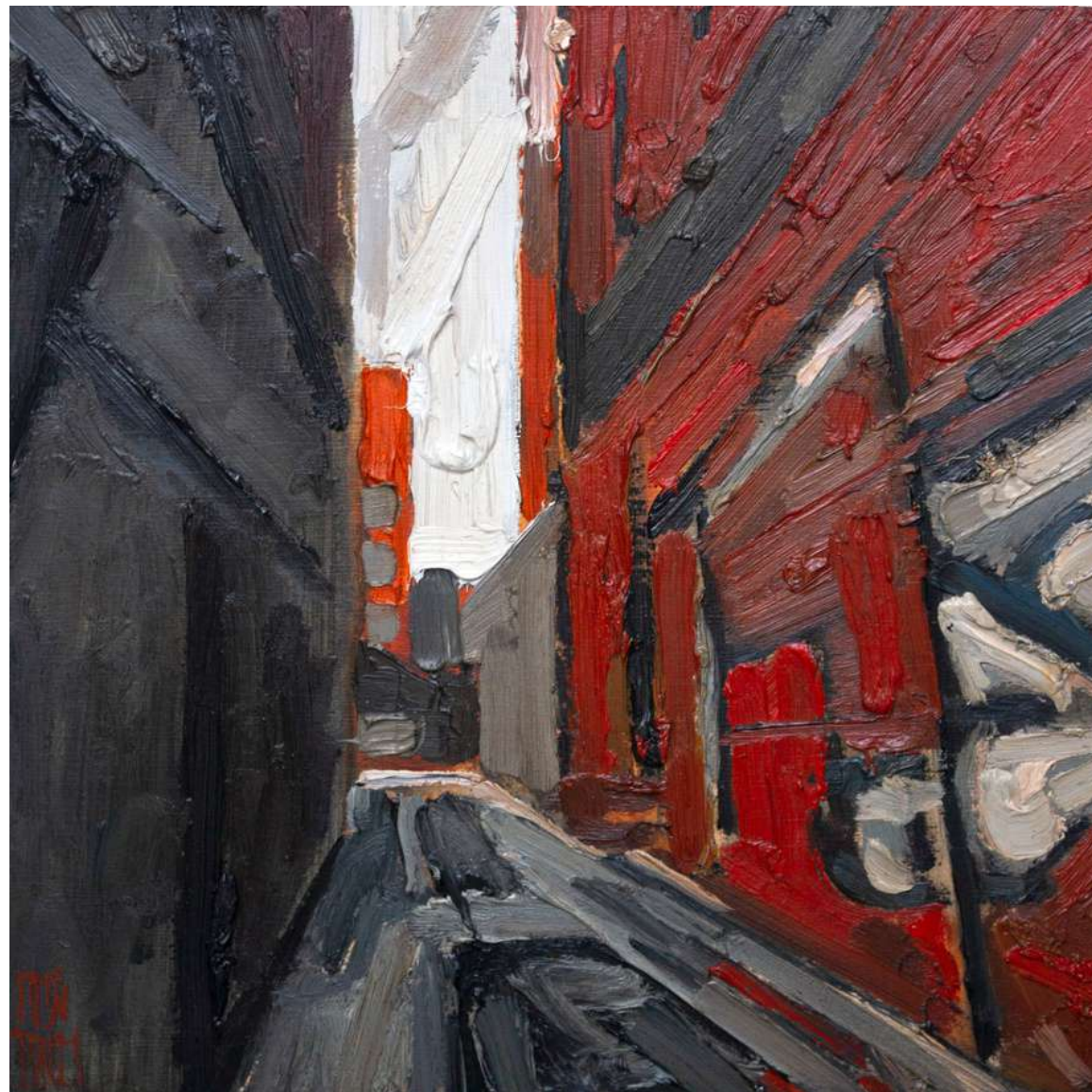
 Oil on canvas

 60 x 36 in.

 \$6825

Framed by Wall Space





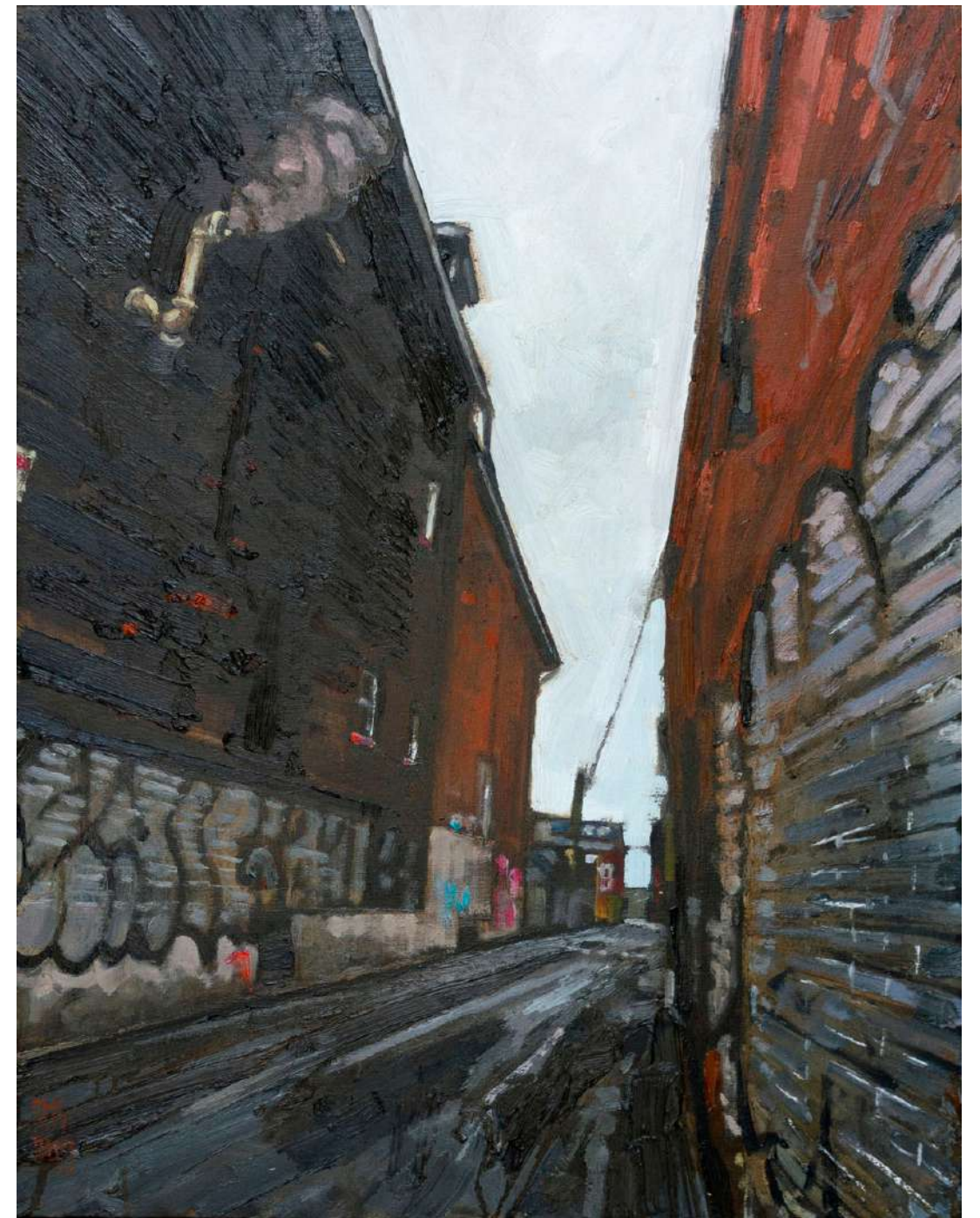
*LANEWAY, GLASGOW*

 Oil on panel

 12 x 12 in.

 \$700

Framed by Wall Space



*OFF SPADINA*

Oil on panel 

18 x 24 in. 

\$1355 

Framed by Wall Space






*URBAN FOLIAGE\_SILVER LAKE*

 Oil on canvas

 30 x 24 in.

 \$2360

Framed by Wall Space






*RADIO CITY\_NYC*

 Oil on canvas

 36 x 36 in.

 \$4075

Framed by Wall Space



*ROAD\_GLASGOW*

Oil on panel 

30 x 30 in. 

\$2910 

Framed by Wall Space






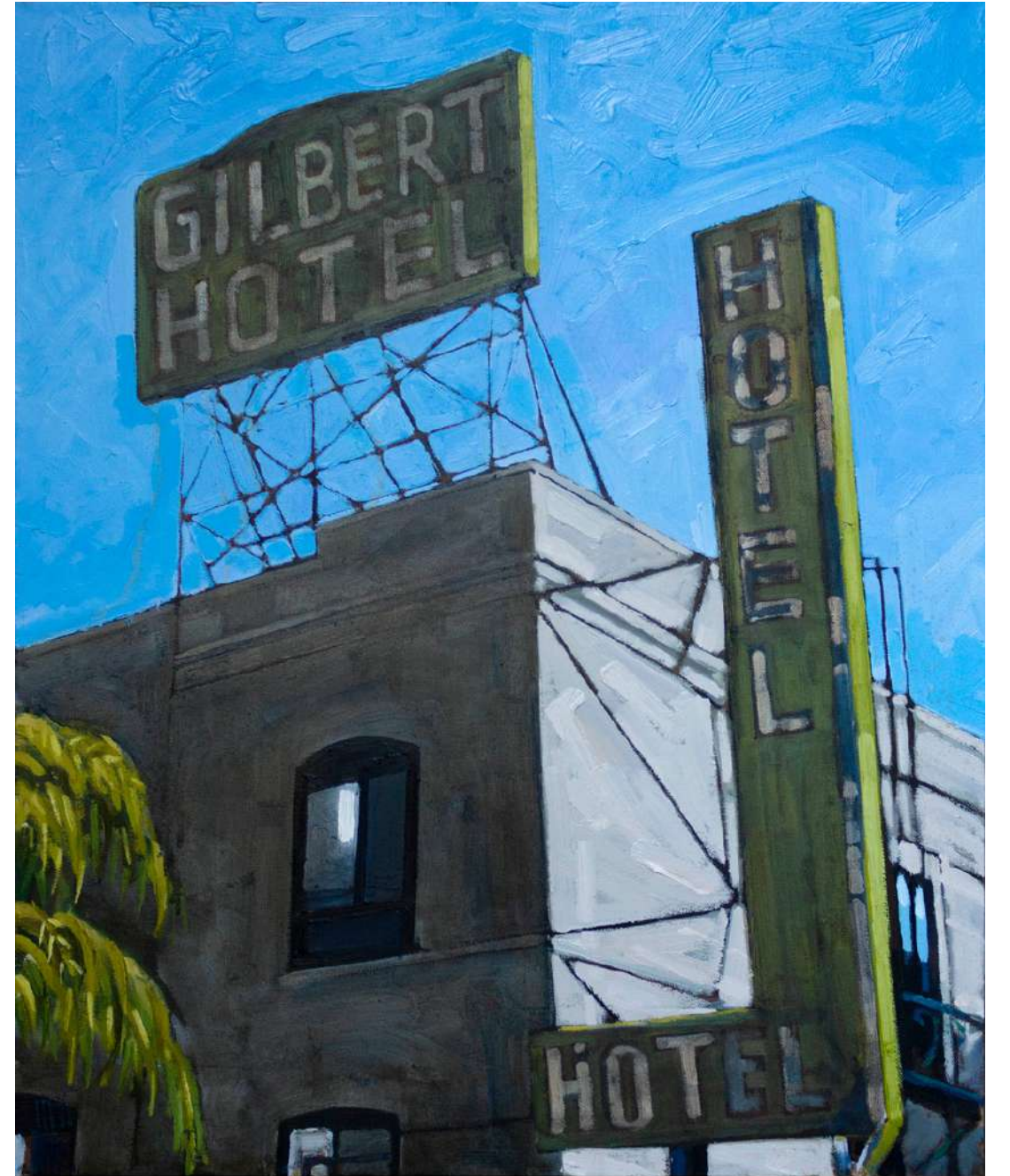
*SIDESTREET BLUES\_LA*

 Oil on canvas

 24 x 30 in.

 \$2360

Framed by Wall Space



*HOTEL HOTEL, HOLLYWOOD*

Oil on canvas 

24 x 30 in. 

\$2360 

Framed by Wall Space



# (RE)TRACE : NEW PAINTINGS

## CURATORIAL TEXT

Wall Space Gallery is proud to present (RE)TRACE: NEW PAINTINGS, the latest body of urban landscape paintings by Stewart Jones. In this body of work, Jones captures scenes from his last year of travel between NYC, Toronto, Montreal, Prince Edward County, and Los Angeles. Jones' work focuses on the sidelines of the city and the relationships of light and shadows within the urban environment.

Through curated viewpoints, Jones captures the enigmatic character that makes urban-scapes unique. His dramatic cinematic perspectives draw us into the qualities of light and the peripheral natural and architectural structures that place us in a specific time and place. In this exhibition, Jones takes us on a journey following his own steps in a whirlwind of post-pandemic travel.

Jones' palettes lean towards the gritty and brooding, relishing in the subtle transitions of hues in a paved roadway or building façade, and the broiling textures of a storm-clouded sky. The sensuousness of Jones' thick applications of paint make the grungy tangible. Like a brick layer, his impasto technique builds stroke upon stroke to construct the sensation of a place.

In *URBAN COMPOSITION*, Jones balances between realism and abstraction. Paint is laid on so thick that marks press up against one another competing for the foreground. With a far-off horizon in the upper corner, the road rises up to meet us flattening the space into a map of shifting line, colour, and light.

Jones invites us to look up, down, out, and around, turning our attention to cracks and vistas alike. Using striking contrasts of shadows and off-kilter perspectives, he jars us into the moment. In his Los Angeles scenes such as *SIDESTREET BLUES* and *URBAN FOLIAGE\_SILVER LAKE*, saturated blue skies offer wide-open pools of colour to dive into. Rather than being subdued to the background, their criss-crossing brushwork matches the energy of the foliage and roads around them.

Jones builds up his painted spaces to immediately capture the imagination through perspective, light and colour. His keen ability to translate the essence of a place we may have never visited allows us to retrace these places through the mind of the artist.

Tiffany April,  
Curator





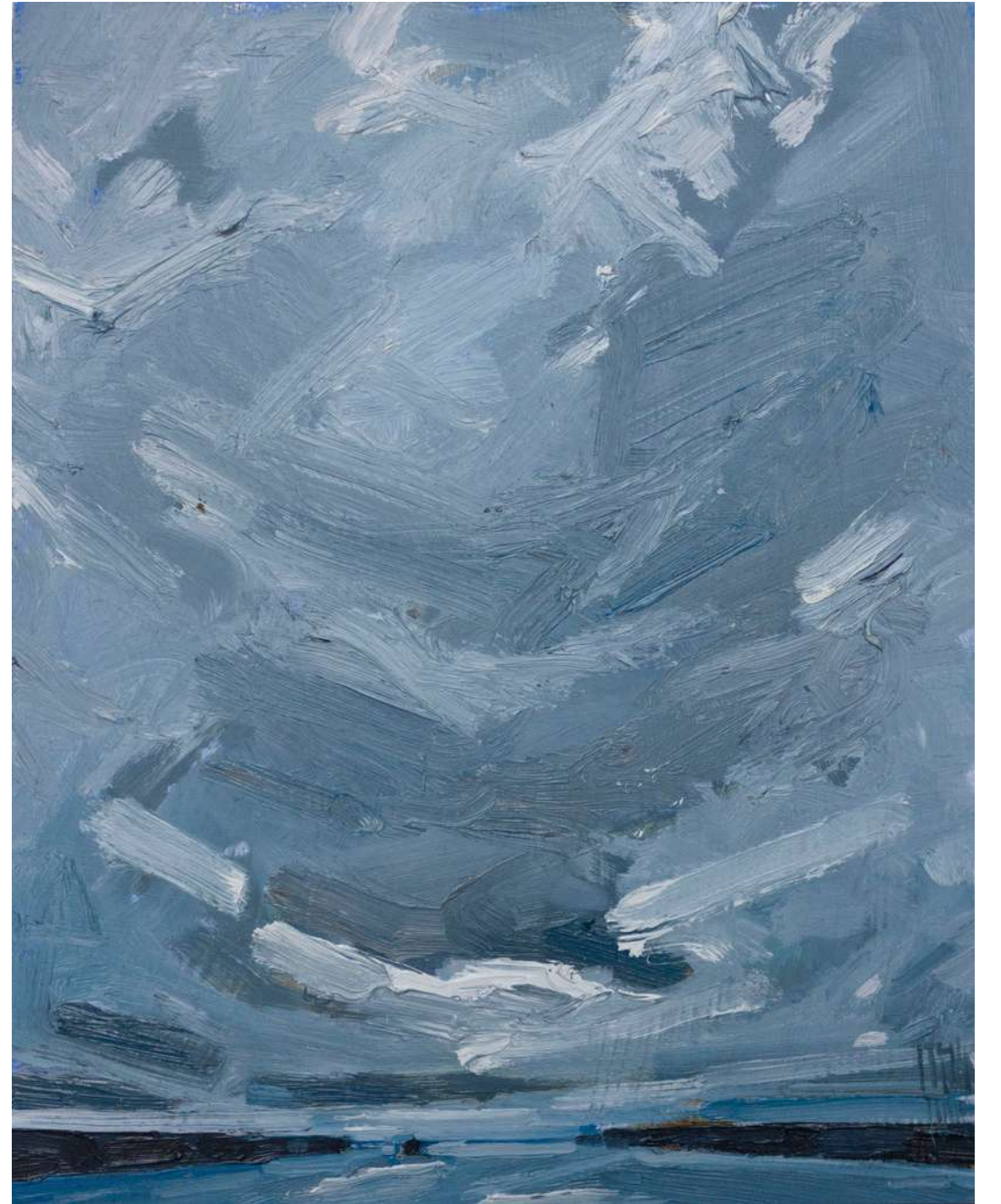
*PURPLE CLOUDS\_LAKE ONTARIO*

 Oil on canvas

 12 x 12 in.

 \$700

Framed by Wall Space



*BRIDGE VIEW #49*

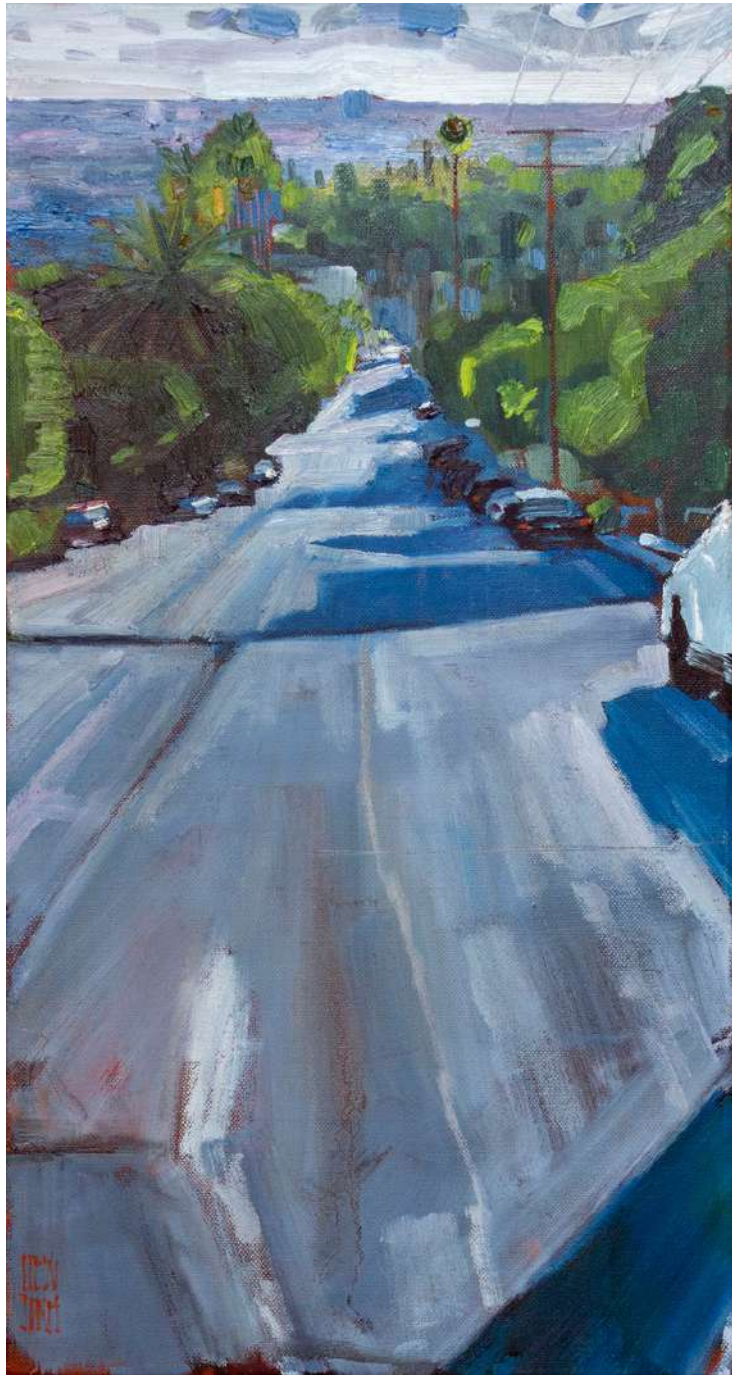
Oil on panel 

11 x 14 in. 

\$760 

Framed by Wall Space






*LA VIEWS*

 Oil on canvas

 12 x 24 in.

 \$1035

Framed by Wall Space



*WELLINGTON WHITE-OUT*

Oil on canvas 

14 x 18 in. 

\$1035 

Framed by Wall Space





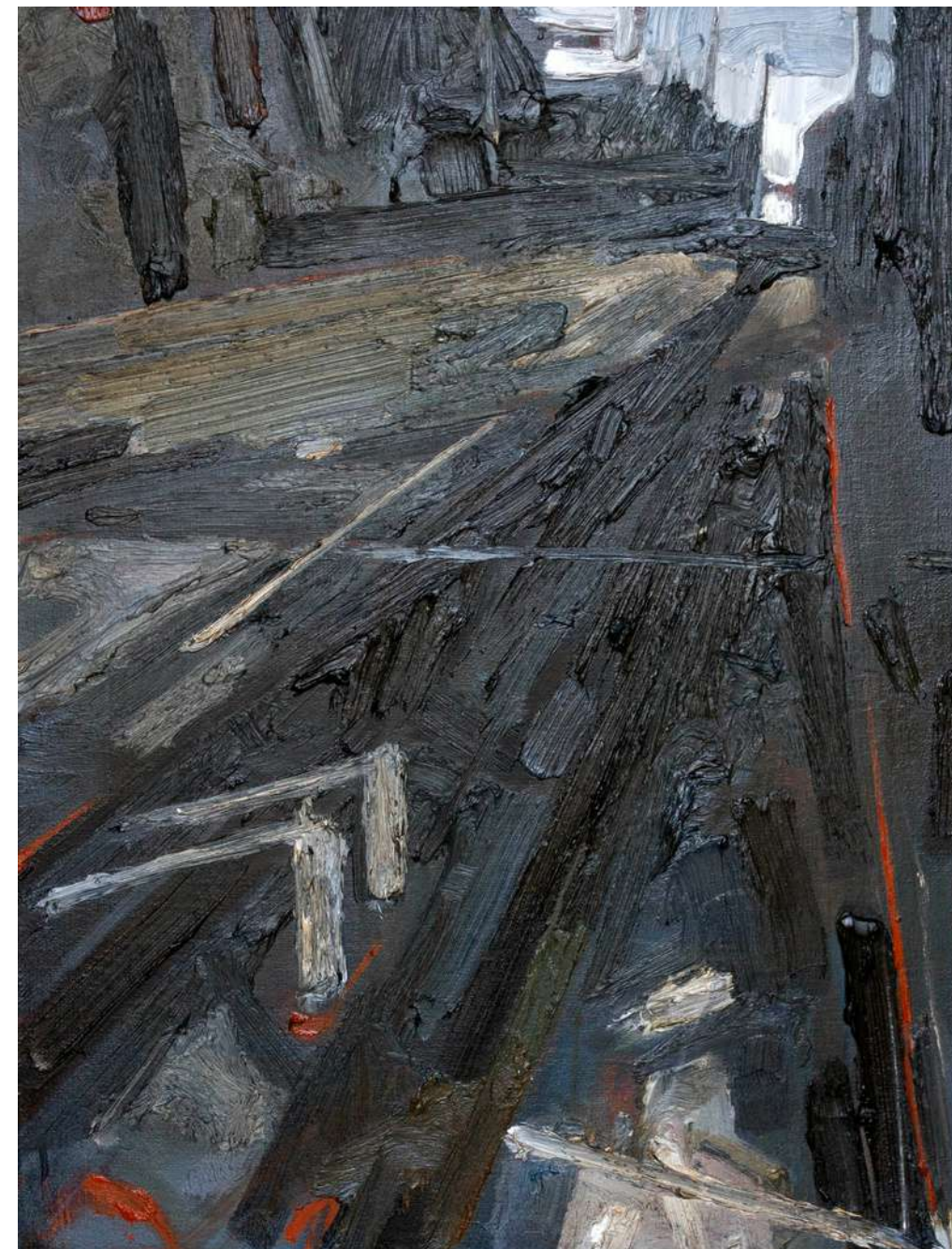
*BELLEVEGAS LANEWAY*

 Oil on canvas

 8 x 10 in.

 \$540

Framed by Wall Space



*URBAN COMPOSITION*

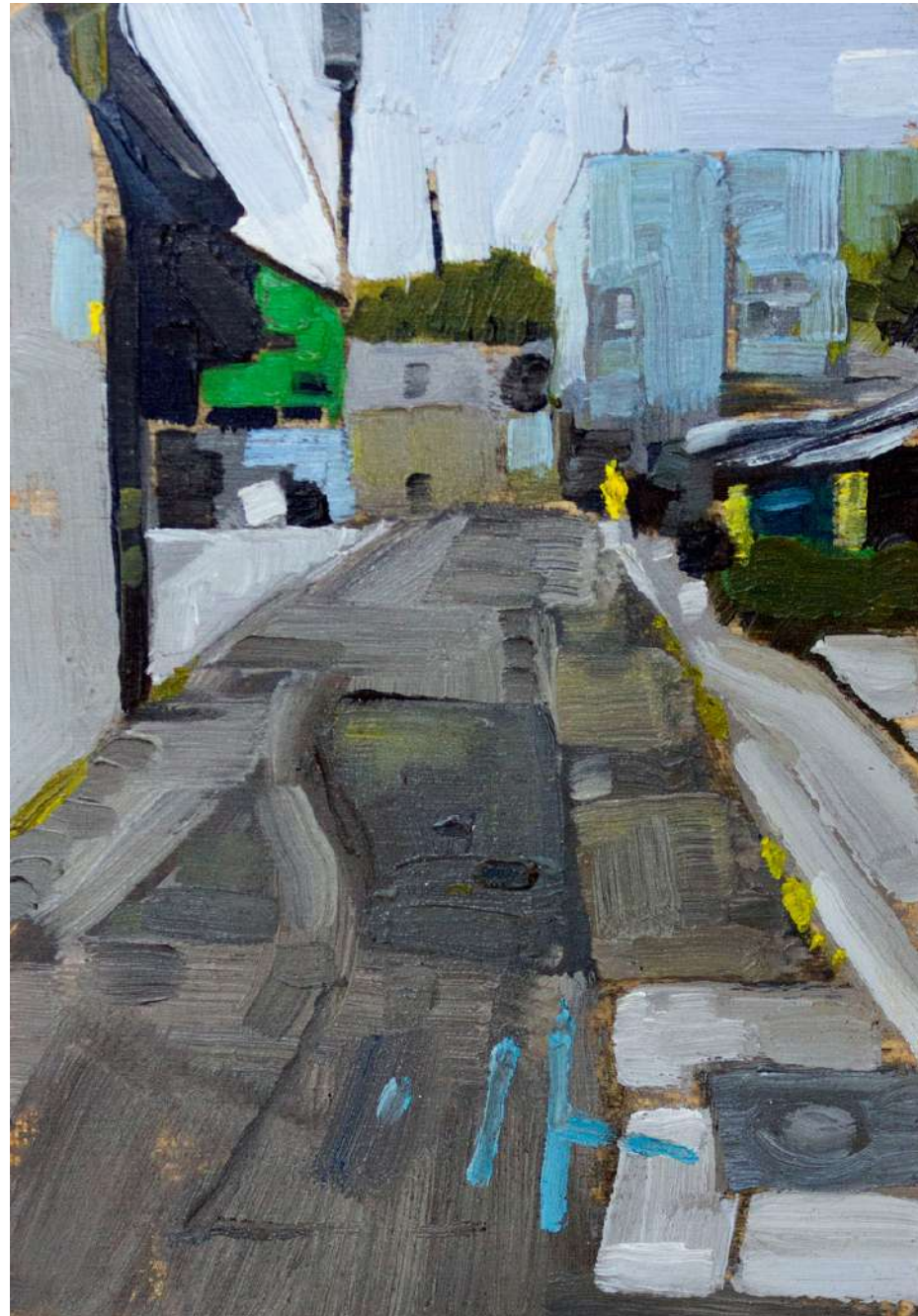
Oil on canvas 

19.5 x 24 in. 

\$1640 

Framed by Wall Space



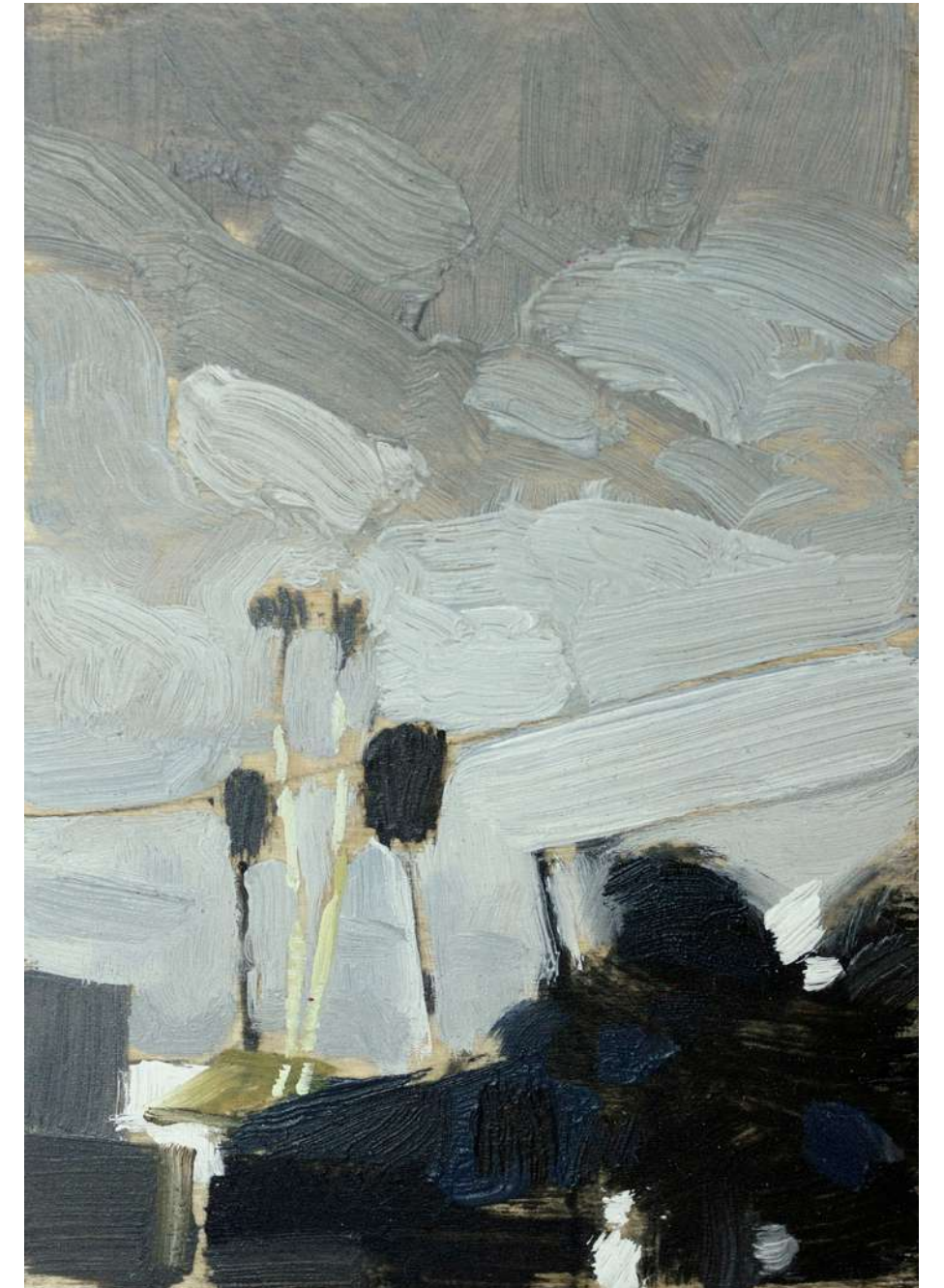


*VENICE BEACH LANE*

 Oil on panel

 3.5 x 5.25 in.

 \$350



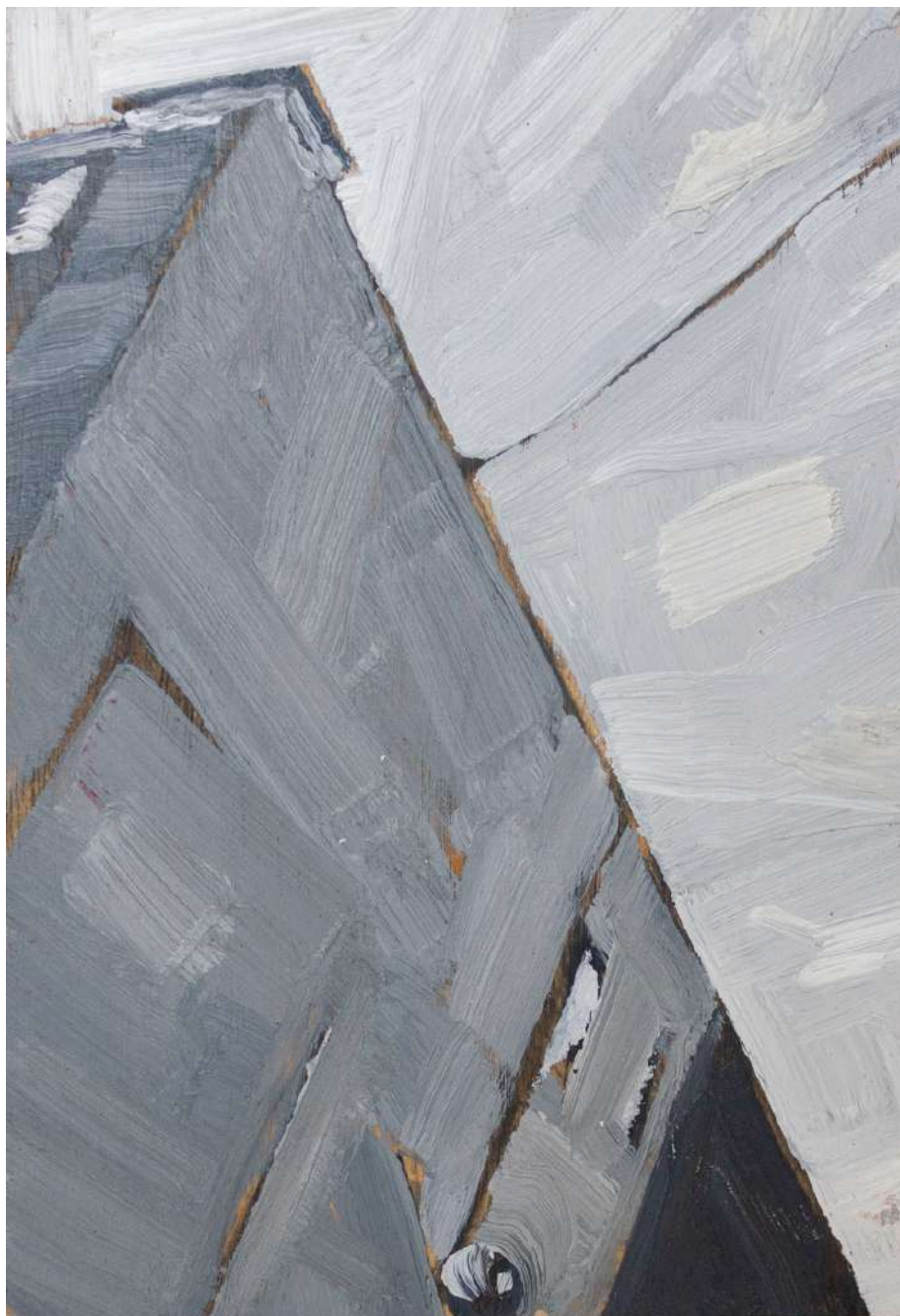
*NIGHT\_SILVER LAKE*

Oil on panel 

3.5 x 5.25 in. 

\$350 



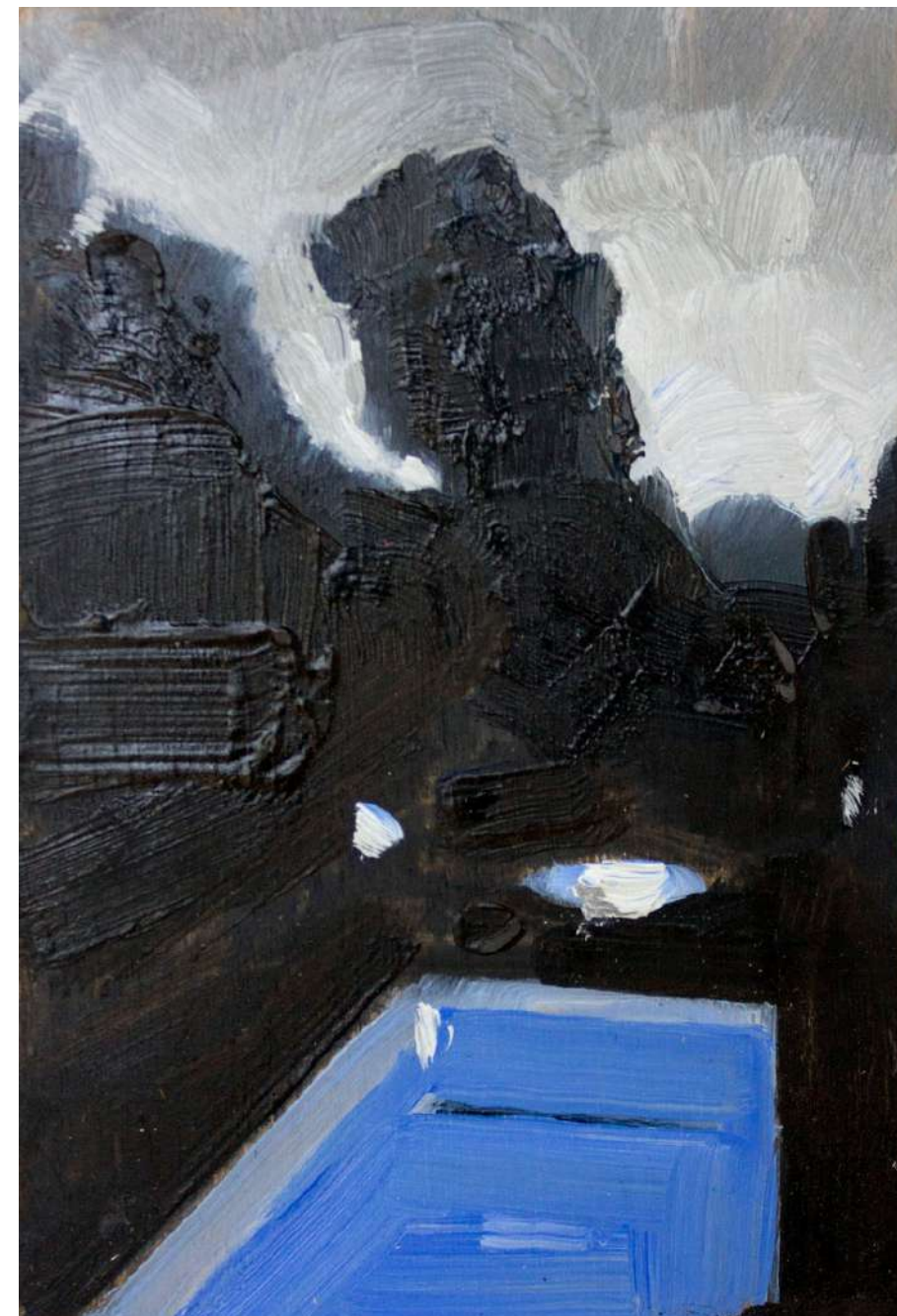


*URBAN ANGLE\_LA*

 Oil on panel

 3.5 x 5.25 in.

 \$350



*POOL + RAIN\_SILVER LAKE*

Oil on panel 

3.5 x 5.25 in. 

\$350 





*VENICE CALIFORNIA*

 Oil on panel

 5.25 x 3.5 in.

 \$350



*OLD THEATRE ALLEY\_HOLLYWOOD*

Oil on panel 

5.25 x 3.5 in. 

\$350 



# GET IN TOUCH



📍 358 Richmond Rd. Ottawa, ON

☎ 613-729-0003

✉ info@wallspacegallery.ca

👉 wallspacegallery.ca

STEWART JONES  
(RE)TRACE : NEW PAINTINGS  
JUNE 16 - JULY 8

