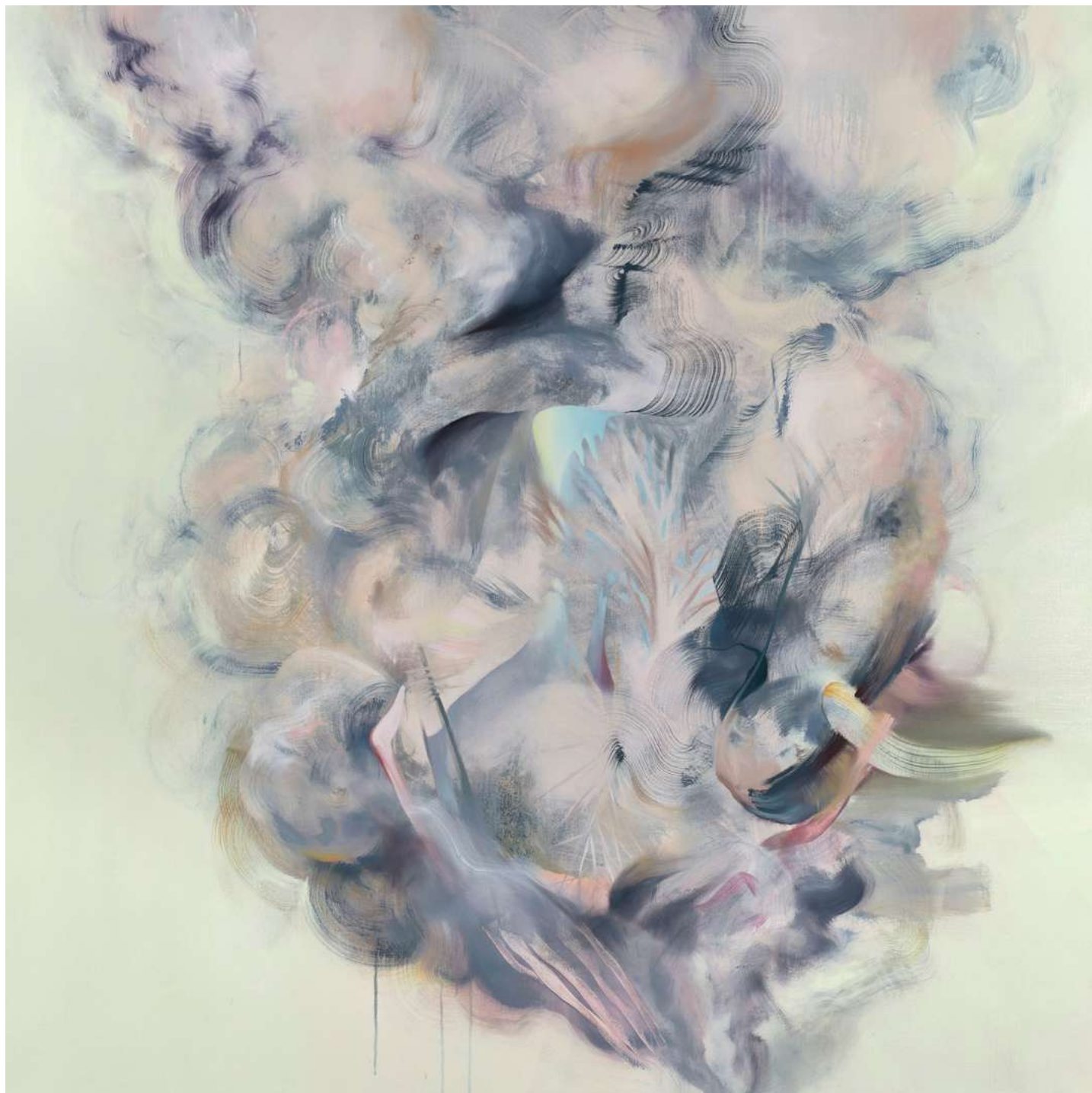


TIFFANY APRIL

wall
WALL
SPACE
& pac

IF YOU DISCOVER FIRE



TIFFANY APRIL

BIOGRAPHY

Tiffany April is a visual artist working in painting and light-based installation. She deconstructs the hierarchy between human and non-human beings, and instead considers the human body as engrained in ecological processes. April uses sensuality and simplicity of forms woven in space to place the bodily on the same plane as the technological and the organic.

April completed her MFA at the University of Ottawa (2019), and her Bachelor of Fine Arts in Studio Arts at Concordia University (2014). April was awarded participation in the Untapped Emerging Artist section at The Artist Project (2022) and took part in Toronto Outdoor Art Fair (2021). She was shortlisted for the RBC Emerging Artist Award (2020) and invited to create a public installation for the City of Ottawa's Microcosm Project (2020). Her participation in Emergence2021 (Galerie Art Image) was supported by the City of Ottawa's Creation and Production Grant and the Ontario Arts Council's Exhibition Assistance Grant. Her MFA thesis exhibition, *The Surgeon and the Magician*, was presented at the Ottawa Art Gallery (2019). Her work is in national and international private and public collections including Invest in Canada (2021) and the City of Ottawa's art collection (2018, 2021). April has exhibited in Canada (Ottawa, Montreal and Toronto) and internationally (London, Berlin and South Korea).



I would like to thank Evan and Max at the Ottawa Woodshop and Lauchlin from Woodgrain Ottawa for their guidance and help in bringing the sculptural installations to life.

April is grateful to the Canada Council for the Arts for their support of this exhibition. A portion of the proceeds will be donated to the Centre for Indigenous Environmental Resources.



Canada Council
for the Arts

Conseil des arts
du Canada



IF YOU DISCOVER FIRE

ARTIST STATEMENT

The ancient Greek philosopher Empedocles theorised that vision functioned by emitting rays of fire from the eyes, similar to a lantern. In this sense, humans were the illuminating source of their own world. Fire was considered part of human biology, an extension of the human body reaching beyond its confines to interact with the world.

I find Empedocles hypothesis captures a meaningful depiction of human interaction with the world that breaks with the idea of humans as individual, impenetrable beings. Despite its human-centered implications, Empedocles was suggesting that humans are in conversation with and affecting their environment.

Human subjectivity has been center focus in Western philosophy and innovation. *If You Discover Fire* brings forward the intelligence of fire and human entanglement within its agency. I understand nature's intelligence as self-correcting action or growth in favour of ecological balance. Fire can be a destructive force, but it is also one of renewal.

The inspiration for this body of work began during lockdown, while waiting for the elevator in my apartment building. I was absent-mindedly reading the fire escape sign, followed by a morning of news reports on the untameable chaos of the B.C. wildfires, and months prior, the devastation of the Oregon and Washington wildfires.

The fire safety sign read: IF YOU DISCOVER FIRE, followed by a list of safety and escape measures. It was the first line, and the signs' purpose, that struck me as ironic. The human species evolved biologically and created society as we know it because of our 'discovery' and harnessing of fire's raw energy. Now, in the 21st century climate crisis we are increasingly exposed to wildfire and the sublime presence of its destructive power.

If You Discover Fire weaves together the myriad ways that our bodies and minds are deeply connected to fire; from its effect on early hominin brain development, status as a divine entity, mythological connections to sexuality, power, and knowledge, its hand in Indigenous and Western land cultivation and technological developments, and its role in balancing ecosystems.

Today, fire has made space travel and renewable energy possible. As our bodies continue to undergo mental and physical stressors of climate change, the question remains: if you discover fire what will you do with it – innovate or find the nearest exit?


Tiffany April



Relief by the Water

 Acrylic and oil on panel

 72 x 48 in. Diptych


 \$3600



1000 Year Burn

 Acrylic and oil on panel

 40 x 40 in.

 \$2400



A Delicate Balance

Acrylic, oil and fabric on panel 

24 x 24 in. 

\$1440 

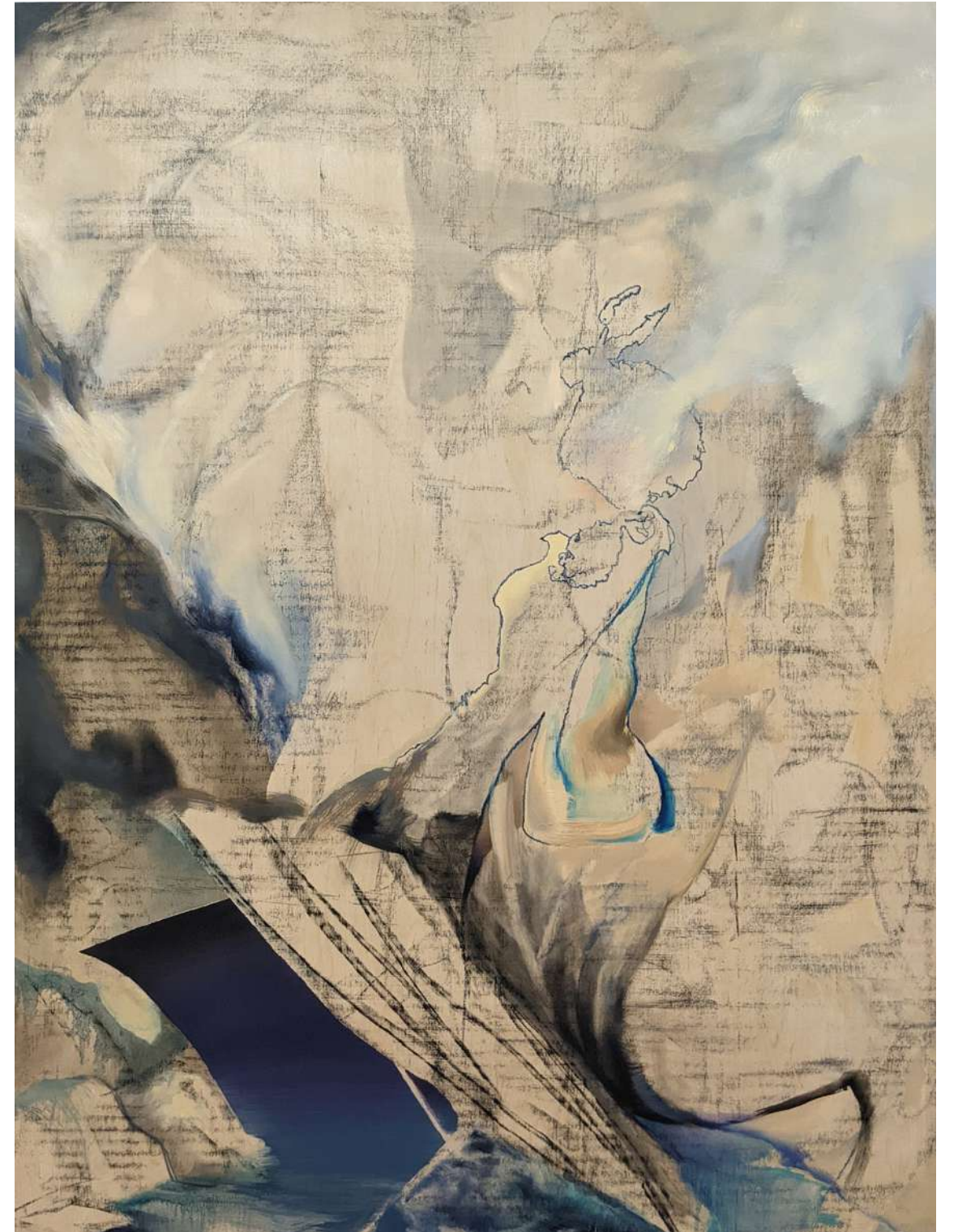


River Crossing

 Acrylic and oil on canvas

 36 x 48 in.

 \$2520

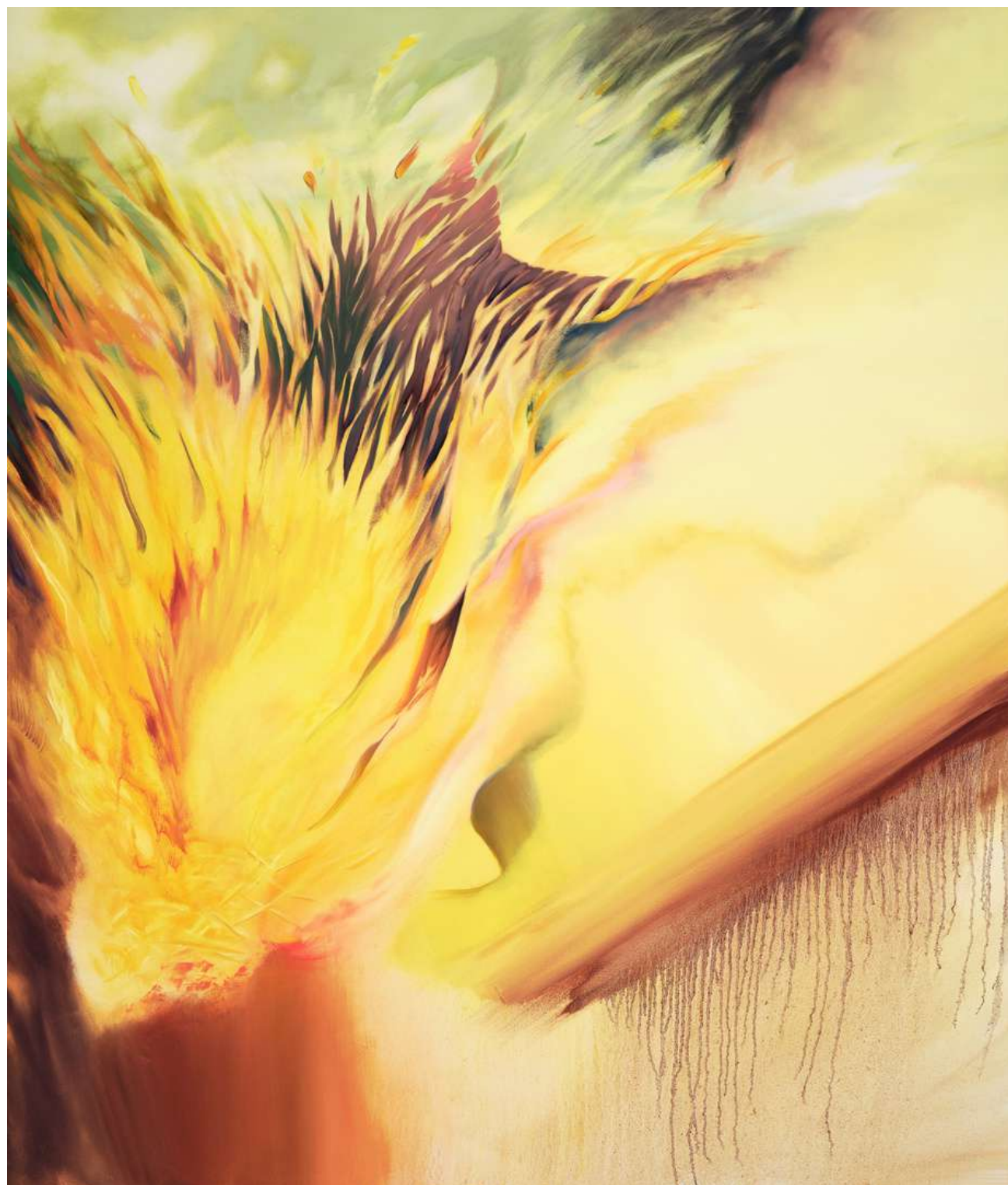


What the Ashes Gave

Acrylic, oil and fabric on panel 

36 x 48 in. 

\$2520 

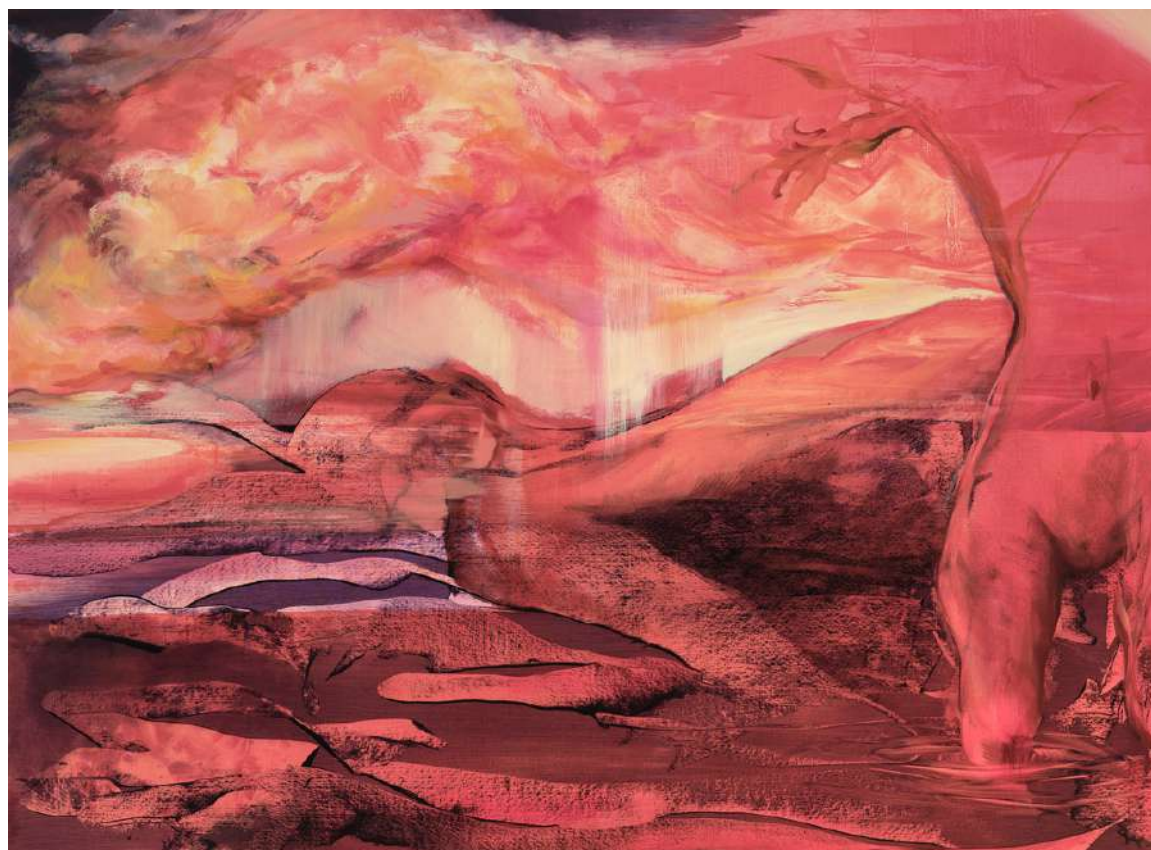


Prometheus' Gift

 Acrylic and oil on canvas

 60 x 70 in.

 \$3900



If You Discover Fire

 Acrylic and oil on paper

 29 x 21.5 in.

 \$1200

Framed by Wall Space



A Home For Fire

Oil on canvas paper 

23.5 x 17.5 in. 

\$955 

Framed by Wall Space

IF YOU DISCOVER FIRE

CURATORIAL TEXT

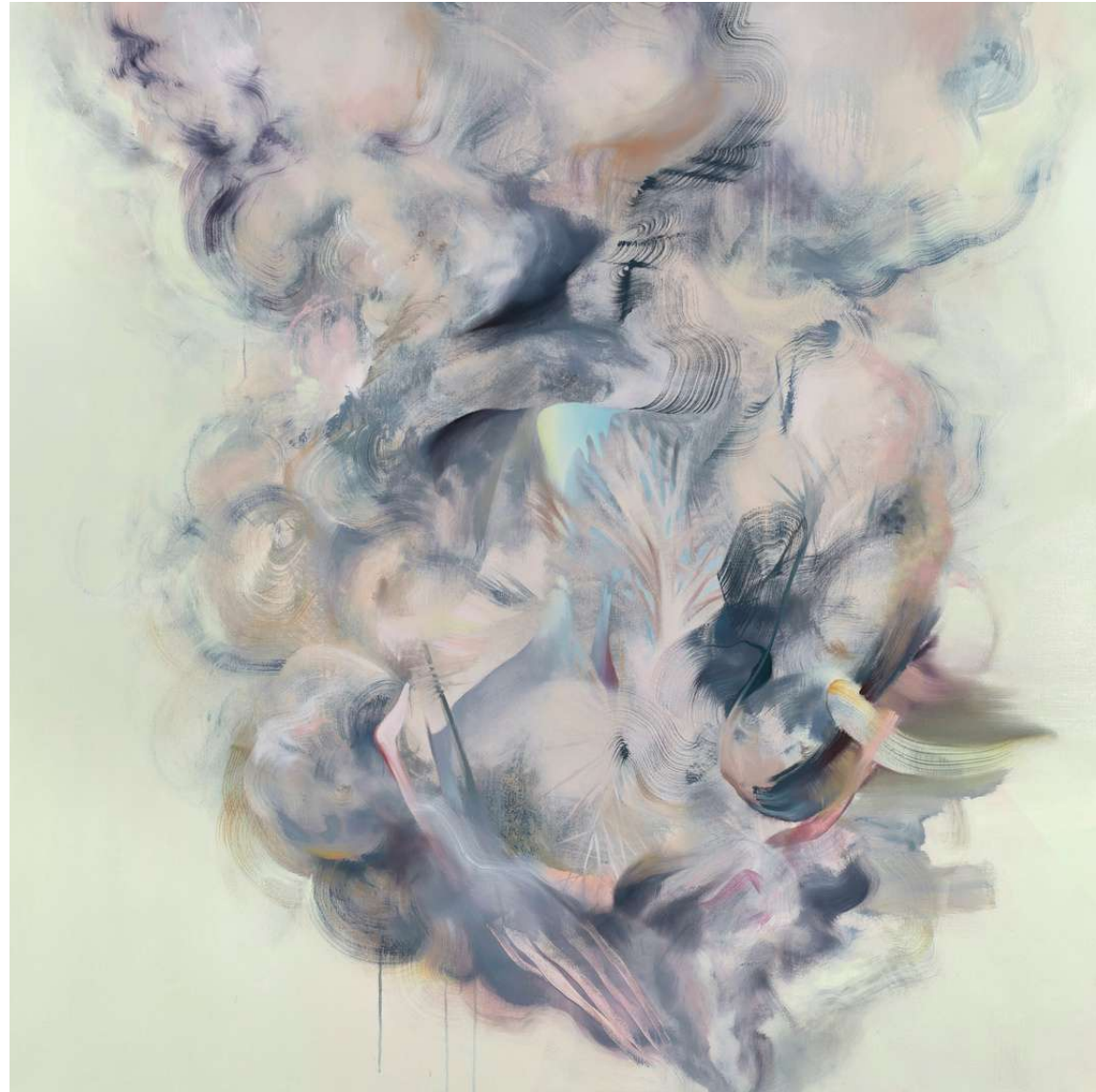
Wall Space Gallery is proud to present Tiffany April's second solo exhibition with the gallery, *If You Discover Fire*. Within this body of work, April explores Western post-human relationships to nature and technology within growing wildfire disasters.

Wildfires pose a significant threat to our landscape. Catastrophic fires have plagued forests worldwide, including Australia, Oregon and B.C. In a recent report released by the United Nations, experts found that extreme fires could grow 33% by 2050. Nevertheless, it is essential to identify the importance fires and controlled burnings play within an environment and culture. Indigenous people have long used fires to shape the landscapes and increase biodiversity. Indigenous fire stewardship promotes that controlled burns are crucial to the health of a forest; they rid the forest bed of fallen debris, eliminate invasive species and insects, create open space for young plant life to flourish and inject nutrients back into earth. While climate change promotes causality-ridden wildfires, we must remember that fire is also a source of life and rejuvenation. *If You Discover Fire* explores these complexities through a cyclical journey of renewal and destruction.

In *Prometheus' Gift*, April explores the myth of Prometheus, the thief of fire who brought the element from the Gods to humans, thus granting the gift of knowledge. The large canvas echoes the significance of this tool. *If You Discover Fire* radiates the apocalyptic destruction witnessed during the peak of a burn. The eradication of vegetation leaves behind only the subtle topography of the landscape. *Relief by the Water* refreshes the senses; like an oasis in the desert the piece offers a moment of escape and highlights how new growth can flourish post-fire. *Where the Blueberries Grow* touches on the long tradition of growing blueberries with fire; an Indigenous custom still in use today.

The life cycle of a wildfire is full of intricacies and paradoxes that can alarm but also enrich. April's *If You Discover Fire* demonstrates the constant transformations that landscapes and human culture faces under burning. Whilst climate change continues to disrupt this cycle, it is important to remember that fire does not signify death, but rather change.


Phoebe Sampey
Gallery Manager



If You Discover Fire II

 Acrylic and oil on canvas

 60 x 60 in.

 \$3600

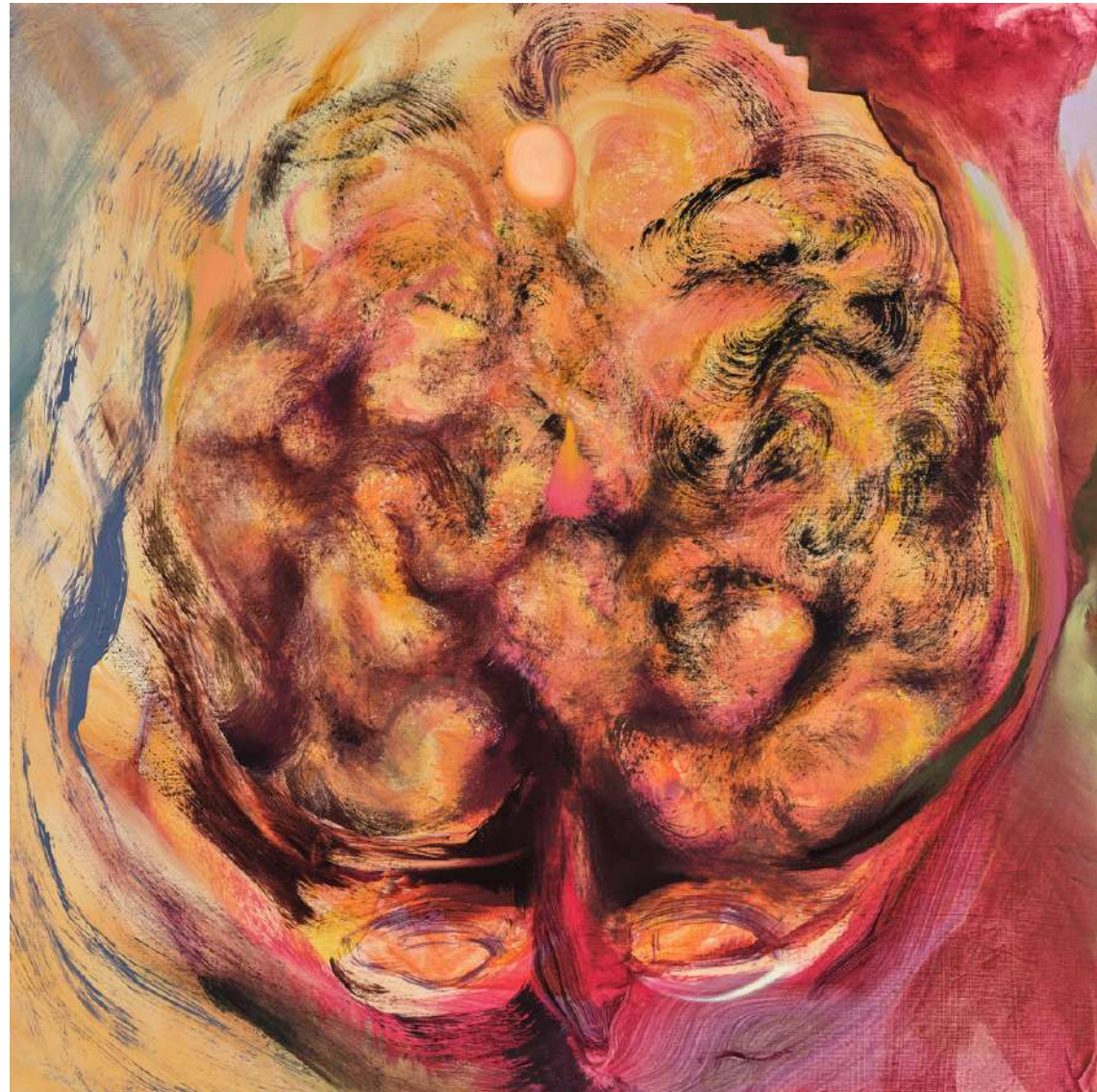


The Birth of Fire

Acrylic and fabric on panel 

12 x 12 in. 

\$720 



Social Being

 Acrylic and oil on panel

 20 x 20 in.

 \$1200



Where the Blueberries Grow

Acrylic and oil on panel 

60 x 60 in. 

\$3600 

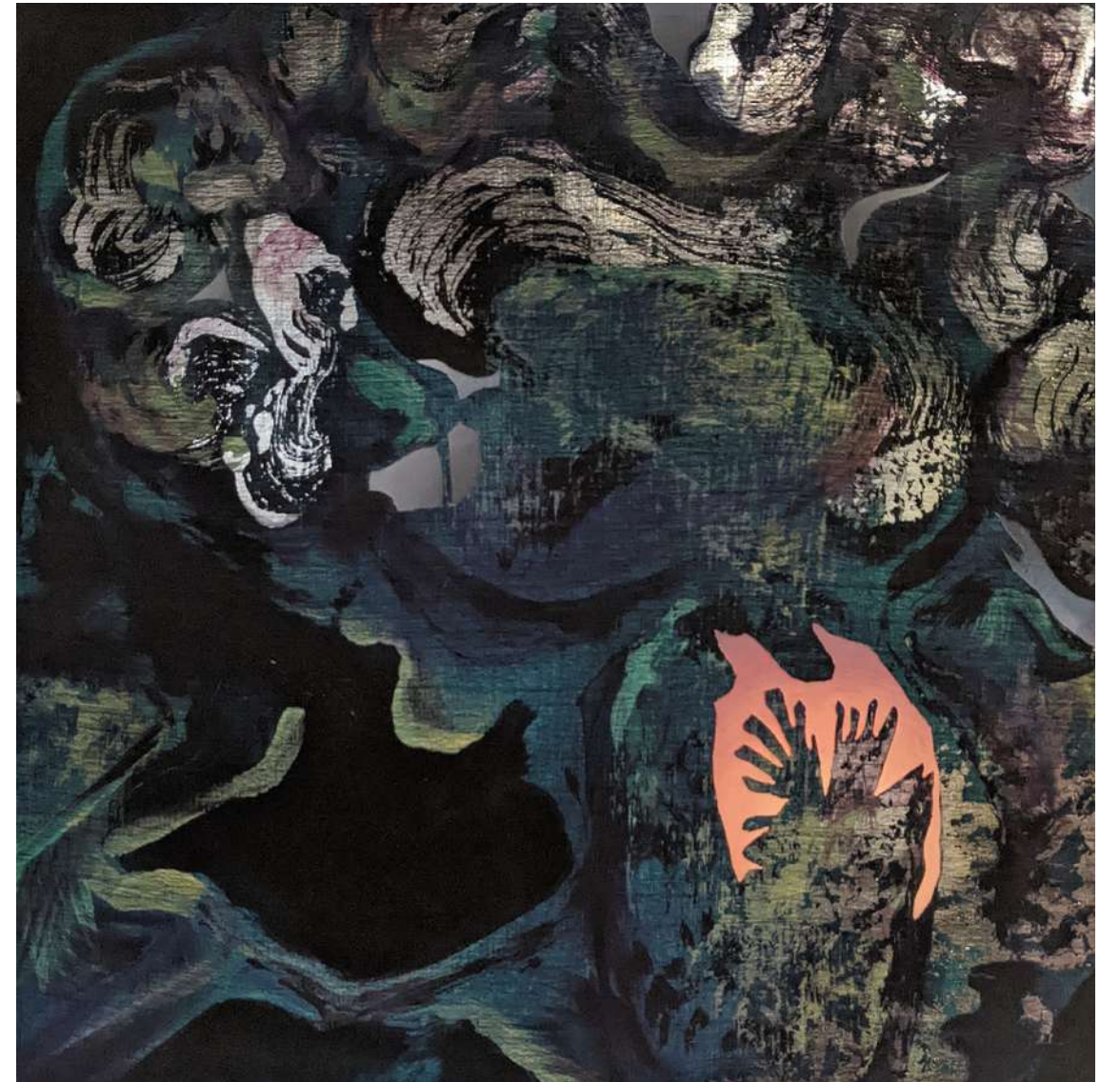


Smoke, Ash, Sun

 Acrylic, oil and chiffon on panel

 8 x 8 in.

 \$480



The Beginning

Acrylic, oil and chiffon on panel 

10 x 10 in. 

\$600 

GET IN TOUCH



📍 358 Richmond Rd. Ottawa, ON

☎ 613-729-0003

✉ info@wallspacegallery.ca

➤ wallspacegallery.ca

TIFFANY APRIL
IF YOU DISCOVER FIRE
MAY 13 - JUNE 10

