

ALPINESTARS

AUTO 2024



[ALPINESTARS.COM](https://www.alpinestars.com)

ALPINESTARS

AUTO 2024



20 ————— 24

ONE GOAL. ONE VISION.

20 ————— 24

AUTO SUITS	06
AUTO GLOVES	30
TECHNICAL LAYERS	36
BALACLAVA + SOCKS	42
AUTO FOOTWEAR	46
KARTING SUITS	58
KARTING GLOVES	68
KARTING FOOTWEAR	76
PROTECTORS	84
KARTING TECHNICAL LAYERS + ACCESSORIES	90

AUTO SUITS

20 ————— 24





FIA APPROVED
 MANUFACTURER: Alpinestars
 MODEL: HYPERTECH V3
 HOM. NO: DC.289.22-0
 FIA STANDARD: 8856-2018

HYPERTECH V3 SUIT

AUTO RACING

SIZE: 44 - 60



The Hypertech v3 Suit is a super lightweight and breathable two-layer suit with an athletic fit, designed and developed for drivers looking for professional levels of racing performance. With improved protection, the Hypertech v3's outer shell is constructed from an aramidic Nomex® anti-static outer shell that provides optimal heat and flame resistance, while maintaining the lightest possible weight. The suit has an all-new soft, innovative aramidic knit lining for comfort and protection.

In addition, the suit has thin, superlight, Nomex® stretch panels strategically placed on the lumbar area, elbows, knees, and crotch, and designed to offer premium comfort in the driving position. The Formula 1-derived stretch panels provide excellent levels of flexibility and freedom of movement in all the key areas that require mobility. The Hypertech v3 has an innovative cuff construction providing a slimmer fit at the wrist and forearm.

- + Improved protection whilst maintaining ultra-light weight and breathability. All new soft knit lining for comfort and protection. Innovative cuff construction for slimmer fit at wrist.
- + Alpinestars most advanced suit designed to offer improved protection, ultra-lightweight, and optimal breathability.
- + Advanced dual-layer construction assembly for lowest weight, optimized performance, and breathability.

- + All-new, innovative soft lining material technology ensures breathability and comfort.
- + Anatomically engineered, pre-curved arms and legs provide an enhanced fit for an optimum position while driving.
- + Formula 1-derived, super-light Nomex® stretch panels strategically positioned on lumbar area, elbows, knees, and crotch.
- + Alpinestars' all-new extraction handle design from Formula 1 provides an effective safety feature for the extraction of the driver in the event of a crash.
- + New, innovative knitted cuff construction for reduced weight and maximum comfort.
- + Flat seam construction for reduced pressure points and improve strength.
- + Nomex® anti-static outer shell fabric offers exceptional heat and flame-resistant properties.
- + Specially designed soft collar incorporates leather details, knit fabric and secure hook and loop closure.
- + Printed logos help maintain the suit's material integrity and reduce overall weight.
- + Premium YKK metal zipper with Alpinestars zipper pullers, plus double slider for a versatile and customizable fit.
- + Athletic-Slim fit design.
- + Sold with laundry bag for convenience and to protect the material fibers of the suit.
- + Certified to the new FIA 8856-2018 homologation standard.



3350224 9114 MID GRAY BLACK FLUO RED
 3350224 1065 BLACK DARK SHADOW
 3350224 292 WHITE BLACK SILVER



MANUFACTURER: Alpinestars
MODEL: GP TECH V4
HOM. NO. DC.345.23-0
FIA STANDARD: 8856-2018

GP TECH V4 SUIT

AUTO RACING

SIZE: 44 - 64



The GP Tech v4 Suit features an outer shell twill material developed exclusively for Alpinestars which is combined with an innovative, aramidic base knit lining for optimum levels of comfort, protection, and lightweight. Ventilation levels are further enhanced by the breathable panels on the sides of the suit. The GP Tech v4 also incorporates lightweight stretchable panels on the lower back, elbows, crotch, and knees to provide drivers with greater levels of flexibility and freedom of movement both in and out of the car.

+ Improved protection whilst increasing breathability and maintaining low weight.

New breathable 3D Nomex® fabric provides the suit with more airflow and ventilation. Elastic waist construction for true belt cinch fit.

+ New advanced three-layer, super-lightweight construction assembly for breathability, maximum comfort, and effective regulation of body temperature.

+ Anatomically engineered, pre-curved arms and legs provide an enhanced fit and an optimum position while driving.

+ Formula 1-derived, super-light Nomex® stretch panels strategically positioned on the lumbar area, elbows, knees, and crotch provide enhanced flexibility.

+ New, enhanced breathability areas on torso, sides, and under arms, for improved ventilation.

+ Alpinestars' all-new extraction handle design from Formula 1 provides an effective safety feature for the extraction of the driver in the event of a crash.

+ Lightweight knitted cuffs for reduced weight and maximum comfort.

+ Soft collar with knit fabric and secure hook and loop closure for improved comfort.

+ Elastic waist construction for belt cinch fit.

+ Printed logos help maintain suit's material integrity and reduce weight.

+ Premium YKK metal zipper with Alpinestars zipper pullers, plus double slider for a versatile and customizable fit.

+ Thigh pockets for convenient, unobtrusive storage.

+ Athletic-Regular fit design.

+ Certified to the new FIA 8856-2018 homologation standard.



3354024 7081
BLUE NAVY BLACK RED

3354024 12
BLACK WHITE

3354024 213
WHITE BLACK RED



GP PRO COMP V2 SUIT

AUTO RACING

SIZE: 44 - 64

The GP Pro Comp v2 features an outer shell plain material developed exclusively for Alpinestars which is combined with a soft aramid base knit lining for optimum levels of comfort, protection, light weight and comfort. Thanks to the introduction of the aramid base lining with an open weave structure, this suit delivers enhanced levels of breathability, and this is reinforced even further by the strategically-positioned knitted stretchable open mesh panels on the back, crotch and armhole for additional airflow and flexibility, both in and out of the car. This suit also incorporates innovative silicon grip technology detailing on the shoulders and lower back to prevent any movement with the car's seat or a HANS device, and also to reduce pressure on the shoulder.

- + Certified to the new FIA 8856-2018 homologation standard certification.
- + Lightweight and breathable multi-layer suit incorporating mesh stretchable panels for maximum comfort and effective body temperature regulation.
- + Innovative silicon grip technology details on shoulders and lower back to provide more feeling / connection with the HANS device and inside a car seat.
- + Formula 1-derived cable opening for cooling vest system or communications on the left of the body, covered by a self-closing flap to ensure maximum levels of protection.
- + Strategically positioned Formula 1-derived stretch mesh panels on the lower back and crotch for enhanced

flexibility, both in and out the car.

- + Alpinestars fully floating arm construction with stretchable knit fabric ensures minimal material resistance while driving.
- + 100% aramid anti-static outershell fabric for exceptional heat and flame-resistant properties.
- + Ribbed wrist and ankle cuffs for maximum comfort and reduced weight.
- + Tall ribbed collar for extended coverage of the neck and improved driver comfort.
- + Alpinestars exclusive shoulder epaulette construction provides an effective feature for the extraction of the driver in the event of a crash.
- + Opening for cable for cooling vest system or communications on the left of the body, covered by a self-closing flap to ensure maximum levels of protection.
- + Premium YKK metal zipper for durability.
- + Double slider on front for a versatile and customizable fit.
- + Thigh pockets for convenient, unobtrusive storage.
- + ALPINESTARS PROTECTS slogan on the lower back of the lining; the same design as used on Alpinestars F1 racing suits
- + Comes with a laundry bag for convenience and effective material fiber protection.
- + Athletic-Regular fit design.
- + Weight 345g/sqm.



3352022 31
 RED BLACK



SILVER BLUE ASPHALT
 BLACK
 3352022 1904



BLACK ASPHALT ORANGE
 FLUO
 3352022 1204



BLACK ASPHALT WHITE
 3352022 1128



ASPHALT CYAN WHITE
 3352022 9172





ALPINESTARS PROTECTS

20 ————— 24





MANUFACTURER: Alpinestars
MODEL: GP RACE V2
HOM. NO. DC.030.19-0
FIA STANDARD: 8856-2018

GP RACE V2 SUIT

AUTO RACING

SIZE: 44 - 64

The GP Race v2 Suit is a multi-layer suit developed for all-round drivers racing in advanced competitions. Compliant with FIA Standard 8856-2018, the GP Race v2 Suit has an athletic regular fit and has a three-layer construction; one layer of aramid twill and two layers of aramid base knit. This assembly offers an increase of 5% in breathability performance, while still maintaining a light weight at 400g/sqm. The suit also incorporates knitted stretch panels for maximum comfort on the armholes, lower back and crotch areas, with a larger and longer back panel to really aid driver flexibility and range of movement, while the internal flat seam, fully floating arm and extended shoulders provide even greater levels of driver comfort.

terned paneling for an optimum fit in the driving position. Alpinestars exclusive shoulder epaulette construction provides an effective feature for the extraction of the driver in the event of a crash.

+ Ribbed, stretchable wrist and foot cuffs for optimum comfort. Premium YKK double slider zipper for a versatile and customizable fit. Thigh pockets for convenient, peace-of-mind storage. Regular fit design. Weight 400g/sqm.

+ Sold with laundry bag for convenience and effective material fiber protection.

+ Certified to the new FIA 8856-2018 homologation standard.



+ Multi-layer lightweight suit incorporating knitted stretchable panels for maximum comfort and excellent breathability. Alpinestars fully floating arm construction with stretchable knit fabric ensures minimal material resistance while driving. Aramid knitted stretchable panels on back, waist and crotch for enhanced comfort and ease of movement. Ergonomic collar with soft knitted lining for extended coverage and maximum comfort. 100% Aramidic outer shell fabric for exceptional heat and flame-resistant properties. Adjustable collar and belted waist ensure a precise fit. Anatomical arm, leg and torso pat-



ANTHRACITE
WHITE ORANGE
3355020 1424



BLACK WHITE ORANGE
FLUO
3354020 1241



BLACK YELLOW FLUO
3355020 155



BLACK WHITE RED
3355020 123



MANUFACTURER: Alpinestars
MODEL: ATOM SUIT
HOM. NO: DC.145.21-0
FIA STANDARD: 8856-2018

ATOM SUIT

AUTO RACING

SIZE: 44 - 64



The Atom suit has a two-layer construction with a soft knitted liner for optimum levels of protection, and driver comfort. With a twill outershell and aramid lining for comfort and breathability, this suit is also equipped with a fully floating arm construction, pre-curved arms and legs, and stretch panels on crotch, back and waist for an optimized fit.

- + Two-layer suit incorporating knitted stretchable panels for maximum comfort and excellent breathability.
- + Alpinestars fully floating arm construction with stretchable knit fabric ensures minimal material resistance while driving.
- + Aramid knitted stretchable panels on the back, waist and crotch for enhanced comfort and ease of movement.
- + Ergonomic collar with a soft stretchable insert for extended coverage and maximum driver comfort.
- + 100% aramid outershell fabric for exceptional heat and flame-resistant properties.
- + Adjustable belted waist ensures a precise fit.
- + Anatomical arm, leg and torso patterned paneling for an optimum fit in the driving position.
- + Alpinestars exclusive shoulder epaulette construction provides an

effective feature for the extraction of the driver in the event of a crash.

- + Ribbed, stretchable wrists and cuffs for optimum comfort.
- + Premium YKK double slided metal zipper for a versatile and customizable fit.
- + ALPINESTARS PROTECTS slogan on the lower back of the lining; the same design as used on Alpinestars F1 racing suits
- + Thigh pockets for convenient, peace-of-mind storage.
- + Regular fit design.
- + Weight 420g/sqm.
- + Certified to the new FIA 8856-2018 homologation standard.



BLACK
3352722 10



ANTHRACITE RED BLACK
3352722 1436



BLACK SILVER
3352722 119



SILVER ANTHRACITE
YELLOW FLUO
3352722 1950



ALPINESTARS IS RACING

20 ————— 24



MANUFACTURER: Alpinestars
MODEL: ATOM SUIT
HOM. NO: DC.145.21-0
FIA STANDARD: 8856-2018



ATOM GRAPHIC SUIT

AUTO RACING

SIZE: 44 - 66

The Atom suit has a two-layer construction with a soft knitted liner for optimum levels of protection, and driver comfort. With a twill outershell and aramid lining for comfort and breathability, this suit is also equipped with a fully floating arm construction, pre-curved arms and legs, and stretch panels on crotch, back and waist for an optimized fit.

- + Two-layer suit incorporating knitted stretchable panels for maximum comfort and excellent breathability.
- + Alpinestars fully floating arm construction with stretchable knit fabric ensures minimal material resistance while driving.
- + Aramid knitted stretchable panels on the back, waist and crotch for enhanced comfort and ease of movement.
- + Ergonomic collar with a soft stretchable insert for extended coverage and maximum driver comfort.
- + 100% aramid outershell fabric for exceptional heat and

flame-resistant properties.

- + Adjustable belted waist ensures a precise fit.
- + Anatomical arm, leg and torso patterned paneling for an optimum fit in the driving position.
- + Alpinestars exclusive shoulder epaulette construction provides an effective feature for the extraction of the driver in the event of a crash.
- + Ribbed, stretchable wrists and cuffs for optimum comfort.
- + Premium YKK double slided metal zipper for a versatile and customizable fit.
- + ALPINESTARS PROTECTS slogan on the lower back of the lining; the same design as used on Alpinestars F1 racing suits
- + High pockets for convenient, peace-of-mind storage.
- + Regular fit design.
- + Weight 420g/sqm.
- + Certified to the new FIA 8856-2018 homologation standard.



BLACK SILVER BLUE
3352523 1972

BLACK ANTHRACITE
ORANGE FLUO
3352522 1056





MANUFACTURER: Alpinestars
MODEL: STELLA GP PRO COMP
HOM. NO. DC.146.21-0
FIA STANDARD: 8856-2018

STELLA GP PRO COMP V2 SUIT

WOMEN'S AUTORACING

SIZE: 38 - 50

The Stella GP Pro Comp v2 features an outer shell plain material developed exclusively for Alpinestars which is combined with a soft aramidic base knit lining for optimum levels of comfort, protection, light weight, and comfort. Thanks to the introduction of the aramidic base lining with an open weave structure, this suit delivers enhanced levels of breathability, and this is reinforced even further by the strategically positioned knitted stretchable open mesh panels on the back, crotch and armhole for additional airflow and flexibility, both in and out of the car. This suit also incorporates innovative silicon grip technology detailing on the shoulders and lower back to prevent any movement with the car's seat or a HANS device, and to reduce pressure on the shoulder.

+ Female anatomical torso, leg and arm paneling patterned for optimum driving position fit.

+ Lightweight and breathable multi-layer suit incorporating mesh stretchable panels for maximum comfort and effective body temperature regulation.

+ Innovative silicon grip technology details on shoulders and lower back to provide more feeling / connection with the HANS device and inside a car seat.

+ Strategically positioned Formula 1-derived stretch mesh panels on the lower back and crotch for enhanced flexibility, both in and out of the car.

+ Alpinestars fully floating arm construction with stretchable knit fabric ensures minimal material resistance while driving.

+ 100% aramidic, anti-static outer shell fabric for exceptional heat and flame-resistant properties.

+ Ribbed wrist and ankle cuffs for maximum comfort and reduced weight.

+ Tall, ribbed collar for extended coverage of the neck and improved driver comfort.

+ Alpinestars exclusive shoulder epaulette construction provides an effective feature for the extraction of the driver in the event of a crash.

+ Premium YKK metal zipper for durability.

+ Double slider on front for a versatile and customizable fit.

+ Thigh pockets for convenient, unobtrusive storage.

+ ALPINESTARS PROTECTS slogan on the lower back of the lining; the same design as used on Alpinestars F1 racing suits.

+ Comes with a laundry bag for convenience and effective material fiber protection.

+ Athletic-Regular fit design.

+ Weight 345g/sqm.

+ Certified to the new FIA 8856-2018 homologation standard certification.



BLACK PURPLE WHITE
3360022 1232

BLACK
TURQUOISE WHITE
3360022 1721

AUTO GLOVES

20 ————— 24





TECH-1 ZX V4 GLOVES

AUTO RACING

SIZE: S - 2XL

Alpinestars is always looking for new ways to improve driver safety and increase protection. The new generation of Tech-1 ZX V4 auto Gloves provide nearly a 20% improvement in heat transmission. This has been achieved while still offering the exceptional combination of fit, feel, and grip for which Alpinestars' auto-racing gloves are known.

Developed with leading drivers in F1 and Endurance, the TECH-1 ZX V4 Gloves offer exceptional protection and optimal temperature control, while significantly improving breathability thanks to the gloves' dual-sided honeycomb fabric construction.

A 3D silicone print palm provides excellent levels of grip from reduced print surface, offering the gloves even more feel. The TECH-1 ZX V4's pre-curved shape has been increased from the previous version, resulting in better fit and less material bunching when holding the wheel.

and with a bonded aramid lining ensure for optimal temperature control and maximum comfort and feel.

- + External seams prevent pressure points and provide superior comfort to the driver.
- + Pre-curved fingers and palm help improve fit and reduce fatigue while driving.
- + Outer grip zones for superb control and feel of the cockpit's controls.
- + Ergonomically designed 3D grip technology on palm and fingers with strategically positioned silicone surface patterning for improved flexibility and control.
- + Touchscreen compatible.
- + Certified to the updated FIA 8856-2018 and SFI 3.3 homologation standards.

+ Advanced and breathable the TECH-1Z V4's flame-resistant honeycomb main assembly made from aramid fiber



MANUFACTURER: Alpinestars
MODEL: TECH-1 ZX V4
HOM. NO: DC23723-G
FIA STANDARD: 8856-2018



3550224 156
BLACK ORANGE FLUO



3550224 9151
TAR GRAY BLACK
YELLOW FLUO FLUO



3550224 104
BLACK ANTHRACITE



3550224 123
BLACK WHITE RED



3550224 17
BLACK BLUE



3550224 13
BLACK RED





TECH-1 RACE V4 GLOVES

AUTO RACING

SIZE: S - 2XL

Offering increased levels of protection, the new Tech-1 Race V4 Glove has many features and benefits of a higher price point glove, such as pre-curved fingers and external palm seams to reduce pressure points.

+ Flame-resistant, aramid fiber main assembly with bonded aramid lining for optimized levels of performance, comfort, and safety.

+ Palm side external seams for increased comfort.

+ Full gauntlet single panel top construction to minimize seams

and reduce weight.

+ Pre-curved fingers and palm help improve fit and reduce fatigue while driving.

+ Extended silicone printing on fingers and full palm for improved grip and feel.

+ Extended cuff length in accordance with the latest FIA homologation standards for maximum protection against fire and heat.

+ Certified to the updated FIA 8856-2018 and SFI 3.3 homologation standards.



3552024 1169
BLACK TAR GRAY



3552024 155
BLACK YELLOW FLUO



3552024 17
BLACK BLUE



3552024 156
BLACK ORANGE FLUO



3552024 13
BLACK RED



3552024 23
WHITE RED



TECH-1 START V4 GLOVES

AUTO RACING

SIZE: S - 2XL

Designed with a single upper panel and innovative finger construction, the Tech-1 Start V4 Gloves have been engineered to reduce the excess material in the fingers, as well as the overall total weight of the glove.

+ Seamless design and innovative finger construction to reduce excess material and total weight.

+ The box cut fingertip construction offers a seamless no-fourchettes design on the ring and middle fingers, resulting in a glove which is anatomi-

cally optimized for a confined cockpit.

+ Pre-curved fingers and palm for improved fit and reduced fatigue.

+ Ergonomically positioned extended, silicon printed fingers and full palms for improved grip and feel.

+ Close-fitting, extended cuff length for maximum protection against fire and heat and with an elasticated wrist for easy entry and a secure fit.

+ Certified to the updated FIA 8856-2018 homologation standard.



3551524 790
ROYAL BLUE



3551524 55
YELLOW FLUO



3551524 30
RED



3551524 10
BLACK

TECHNICAL LAYERS

20 ————— 24



ZX EVO V2 LONG SLEEVE TOP

TECH LAYERS

SIZE: XS - 2XL

Alpinestars ZX Series of EVO technical underwear is constructed with Lenzing™ FR; an innovative natural viscose fiber that affords exceptional flame resistance and protection against heat transfer. This Formula 1 specification underwear is extremely lightweight and thin, while being incredibly soft to the touch for greatly enhanced comfort when wearing a driving suit and comes equipped with an elongated collar for greater coverage.

- + Fabric composition with a high percentage of Lenzing™ FR fiber for enhanced garment performance.
- + Stretchable construction under the new homologation standard requirements.
- + Lightweight, seamless tubular torso construction for optimum comfort.
- + Jacquard motif with Alpinestars epaulettes for a unique design.
- + Certified to the new FIA 8856-2018 and SFI 3.3 homologation standards.



WHITE GRAY
4755020 201

BLACK GRAY
4755020 106

YELLOW FLUO DARK
YELLOW
4755020 556



WHITE BLUE
4755020 27

RED DARK RED
4755020 313



ZX EVO V2 BOTTOM

TECH LAYERS

SIZE: XS - 2XL

Alpinestars ZX Series of EVO technical underwear is constructed with Lenzing™ FR; an innovative natural viscose fiber that affords exceptional flame resistance and protection against heat transfer. This Formula 1 specification underwear is extremely lightweight and thin, while being incredibly soft to the touch for greatly enhanced comfort when wearing a driving suit and comes equipped with an elongated collar for greater coverage.

- + Fabric composition with a high percentage of Lenzing™ FR fiber for enhanced garment performance.
- + Stretchable construction under new homologation standard requirements.
- + Lightweight, seamless tubular construction for optimum comfort.
- + Jacquard motif with Alpinestars knee logo for a unique design.
- + Certified to the new FIA 8856-2018 and SFI 3.3 homologation standards.



WHITE GRAY
4755520 201

BLACK GRAY
4755520 106



RACE V3 LONG SLEEVE TOP

TECH LAYERS

SIZE: XS - 2XL

Advanced tech base layer with Alpinestars innovative flame-resistant technology incorporating elastane fiber for improved engineered elasticity and high levels of comfort.

- + Stretchable construction under the new homologation standard requirements.
- + Soft-touch textile for feel

and enhanced comfort.

- + Lenzing™ FR material is a natural viscose fiber with unique thermal insulation and flame resistance properties that help prevent heat stress.
- + Certified to the new FIA 8856-2018 and SFI 3.3 homologation standards.



4757024 10
BLACK

4757024 20
WHITE



RACE V3 BOTTOM

TECH LAYERS

SIZE: XS - 2XL

Lightweight and offering high breathability and flame-resistance properties, the Race v3 Series Formula 1 specification tech base layer incorporates a relaxed fit for comfort when wearing under a driving suit.

- + Advanced tech base layer with Alpinestars innovative flame-resistant technology incorporating elastane fiber for improved engineered elasticity and high levels of comfort.

+ Stretchable construction under the new homologation standard requirements.

- + Soft-touch textile for feel and enhanced comfort.
- + Lenzing™ FR material is a natural viscose fiber with unique thermal insulation and flame resistance properties that help prevent heat stress.
- + Certified to the new FIA 8856-2018 and SFI 3.3 homologation standards.



4757124 10
BLACK

4757124 20
WHITE



BALACLAVAS

20 ————— 24



ZX EVO V2 BALACLAVA

TECH LAYERS

SIZE: OS

Alpinestars ZX Series of EVO technical balaclavas are constructed with Lenzing™ FR; an innovative natural viscose fiber that affords exceptional flame resistance and protection against heat transfer. This Formula 1 specification underwear is extremely lightweight and thin, while being incredibly soft to the touch for greatly enhanced comfort when wearing a driving suit and comes equipped with an elongated collar for greater coverage.

+ Fabric composition with a high percentage of Lenzing™ FR® fiber for enhanced garment performance.

- + Stretchable open knit construction on mouth and back zones for improved airflow and ventilation.
- + Lightweight, seamless construction for optimum comfort.
- + Double-layered face area for extra protection.
- + Mouth opening for hydration tube access.
- + Flat seams construction to reduce pressure points and improve strength.
- + Certified to the new FIA 8856-2018 and SFI 3.3 homologation standards.



WHITE GRAY
4754320 201



BLACK GRAY
4754320 106



WHITE BLUE
4754320 27



RED DARK RED
4754320 313



YELLOW FLUO
DARK YELLOW
4754320 556

RACE V3 BALACLAVA

TECH LAYERS

SIZE: OS

The Race V3, Formula 1 specification balaclava is extremely lightweight and thin while being incredibly soft to the touch for greatly enhanced comfort when wearing a driving suit.

+ Advanced tech base layer with Alpinestars innovative flame-resistant technology incorporating elastane fiber for improved engineered elasticity and high levels of comfort.

+ Stretchable construction under the new homologation standard requirements.

- + Soft-touch textile for feel and enhanced comfort.
- + Lenzing™ FR material is a natural viscose fiber with unique thermal insulation and flame resistance properties that help prevent heat stress.
- + Flat seams construction to reduce pressure points and improve strength.
- + Mouth opening for hydration tube access.
- + Certified to the new FIA 8856-2018 and SFI 3.3 homologation standards.



WHITE
4757224-20



BLACK
4757224 10



WHITE
4704323 20



BLACK
4704323 10

ZX V4 SOCKS

TECH LAYERS

SIZE: S - XL

The ZX V4 socks use seamless technology with an updated pattern to create fewer pressure points making them more comfortable for wearing throughout long stints in the car.

- + Aramidic socks with elastane fire retardant fiber.
- + Gradual compression, sport design wraps around the muscles, tendons

and ligaments in the foot, ankle and calf. This aids overall circulation and blood flow to the legs, as well as assists in combatting fatigue.

- + Seamless construction reduces pressure points and weight.
- + Certified to FIA 8856-2018 homologation standard



RACE V4 SOCKS

TECH LAYERS

SIZE: S - XL

Alpinestars Race v4 Socks are lightweight, durable and ergonomically designed to meet the demands of the world's top drivers. Certified to FIA homologation standards, the socks offer excellent heat transfer protection and flat seams for comfort.

- + Advanced construction with fire-resistant material features

a wave structure for maximum elasticity and comfort.

- + Durable fabric construction offers resistance to abrasion and tears.
- + Flat seams reduce pressure points and improve strength of garment.
- + Certified to FIA 8856-2018 homologation standards.



BLACK
4704021 10



WHITE
4704021 20





AUTO FOOTWEAR

20 ————— 24



SUPERMONO V2 SHOES

AUTO RACING

SIZE: EUR 37-47 / US 5-13

The Supermono v2 is an ultra-lightweight racing shoe constructed using premium materials with every component reduced in order to save on weight. This model has been designed and engineered to give drivers the ultimate in performance fit and feel. Featuring a new 'sock' construction which is designed to deliver a more sock-like fit, this shoe is also equipped with a more contoured, sculpted shape to better adapt to the lines of the feet, and has a minimal, fuss free construction for maximum lightness with strategically placed perforated zones for exceptional ventilation.

- + Main upper material is constructed using superior bovine leather the optimum blend of superior mechanical resistance and driver comfort.
- + The elastic fireproof collar and tongue combines light-

weight technology and unsurpassed levels of comfort, for enhanced general performance and an optimized fit.

- + Main upper leather material made by patented one-piece design for a highly reduced material construction for greater comfort and performance in the cockpit.
- + Additional hidden instep fit adjustment for a precise, secure and comfortable fit.
- + Strategically-positioned perforation zones on the lateral and medial sides and the front toe for collar for optimized ventilation, breathability and comfort.
- + Para-aramidic fiber tubular lining construction for excellent heat-resistance, weight saving and strength.
- + Main closure made by hook and loop for ease of use.

+ Lightweight micro-porous padding around the heel and insole entrance for enhanced comfort while driving.

- + Collar padding constructed from nitrile rubber for comfort and light weight.
- + Insole in Texon and micro-porous material on the upper for comfort and light weight.
- + Micro-porous heel for additional shock absorbing and light weight.
- + Alpinestars exclusive thin rubber compound outsole, derived from Formula 1's race program, delivers unsurpassed levels of feel and sensitivity with the pedals, while the textured pattern ensures optimum levels of grip.
- + Complies with the FIA 8856-2018 homologation standard.



BLACK YELLOW FLUO WHITE
2716022 158

BLACK GOLD RED
2716022 1593

BLACK WHITE
2716022 12

WHITE BLACK
2716022 21

RED WHITE BLACK
2716022 321





TECH-1 Z V3 SHOES

AUTO RACING

SIZE: EUR 37-47 / US 5-13



The lightweight Tech-1 Z V3 Shoe has a contoured shape and is proportioned to better adapt to the morphology of the feet even more, resulting in improved comfort in the cockpit and reduced driver fatigue. The shoes have an ergonomic foot bed to ensure the foot maintains a natural, comfortable posture while also allowing maximum flexibility, support, and free foot movement.

- + Soft and supple kangaroo leather upper offers superior comfort in forefoot. Thermo-formed heel cup provides secure heel lockdown.
- + New knitted stretch tongue and heel pull tab for ease of entry while putting shoe on.
- + Main upper is constructed from soft and supple kangaroo leather for exceptional levels of comfort and durability in the forefoot.
- + Elastic fireproof collar and tongue for weight saving and sand comfort and enhanced fit.
- + Dual closure, speed lacing system for a personalized fit, and secure closure.

- + Flat wire support system for increased comfort.

The wire system utilizes high-tensile, aramid fibers to ensure a precise and secure fit of the shoe around the foot.

- + The Lace Lock System ensures the shoe remains in position.
- + Extensive perforation zones on lateral and medial sides, heel, and toe for enhanced breathability and comfort.
- + New knitted stretch tongue and heel pull tab for ease of entry while putting on the shoe, offering a precise fit.
- + Perforated inner tongue padding for improved comfort and breathability.
- + Para-aramid fiber tubular lining construction for excellent heat-resistance, weight savings, and strength properties.
- + Thermo-formed heel cup provides secure heel lockdown, with its integrated fireproof PU heel for additional protection.

- + Seamless Achilles zone construction for enhanced driver comfort.

Lightweight micro-porous padding around the heel and footbed for enhanced driver comfort.

- + Alpinestars one-piece toe and heel counter features a multi-compound construction, an integrated insole, and an ergonomic polypropylene heel counter for maximum support, stability, and protection.
- + F1-derived thin rubber outer sole delivers greater feel, improved sensitivity with the pedals, and optimum levels of grip.
- + The textured rubber outer sole has an asymmetric tread and is water repelling and oil resistant to offer high levels of grip.
- + All graphic detailing on the leather features transfer technology for weight saving and improved performance.
- + Certified to the FIA 8856-2018 homologation standard.



BLACK SILVER
2715024 21

WHITE BLACK
2715024 21

DARK SILVER
BLACK RED
2715024 1258

BLACK RED
2715024 13

BLACK YELLOW FLUO
2715024 155

YELLOW FLUO BLACK
2715024 551

LIMITED
EDITION



TECH-1 T V3 SHOES

AUTO RACING

SIZE: EUR 37-47 / US 5-13

The Tech-1 T v3 Shoes offer drivers optimum levels of comfort, fit, and feel. Featuring a full bovine leather construction, the shoe boasts a cut away section at the heel to allow movement while operating the pedals with no pressure points while driving. Every aspect of the shoe has been carefully considered to keep weight as low as possible; the hook and loop strap is a single layer for added lightness, while also ensuring there is no pressure point on the instep, and the classic lace closure system features hidden loops on the lateral and medial to guarantee a snug but unrestrictive fit. The all-new rubber sole, which mimics an asymmetric tire tread, is water repelling and oil resistant to offer high levels of grip and thicker for enhanced levels of comfort in and out of the car, while the mid sole offers reassuring levels of cushioning. Other neat touches include an outer toe protector for comfort and durability, and a Nomex® lining to protect the entire foot against heat.

- + Main upper material made by full grain bovine leather for the optimum blend of mechanical resistance and driver comfort.
- + Equipped with a rear elastic fireproof collar for light weight and enhanced driver comfort.
- + Strategically-positioned perforation zones on the lateral and medial sides for maximum breathability and airflow.
- + Perforated tongue padding for high levels of comfort and breathability.
- + Engineered protection with dedicated lateral and medial toe protectors.
- + The dual closure system incorporates an adjustable hook and loop strap plus a traditional lace and a hidden loop system for enhanced durability, as well as a more personalized fit and a secure closure.
- + Para-aramidic fiber tubular lining construction for excellent heat-resistance, weight saving and strength.



SP + SHOES

AUTO RACING

SIZE: EUR 37-47 / US 5-13

The SP+ Shoe brings F1-derived features to a lower price point with a mix of leather and suede construction for softness with durability where required.

- + The rubber outsole mimics an asymmetric tire tread and is water repelling and oil resistant to offer high levels of grip.
- + Main upper material made with a combination of suede and full grain bovine.

- + Achilles zone construction in a soft cushioned knit for enhanced driver comfort.
- + Dual closure system incorporates an adjustable hook and loop strap plus a traditional lace and hidden loop system for a more personalized fit and secure closure.
- + Strategically positioned perforation zones on the lateral and medial sides, and perforated tongue padding, for enhanced breathability and comfort.
- + Para-aramidic tubular lining construction



BLACK COOL GRAY YELLOW
2710022 1055

BLACK SILVER
2710122 119

WHITE BLACK
2710122 21

WHITE BLACK RED
2710122 213

RED BLACK WHITE
2710122 312

ORANGE FLUO BLACK
WHITE
2710022 4512

LIGHT BLUE BLACK WHITE
2710122 7912



BLACK WHITE
2710723 12

BLACK RED
2710723 13

BLACK YELLOW FLUO
2710723 155

ULTRAMARINE BLUE LIGHT
BLUE
2710723 7179

ALPINESTARS IS RACING

20 ————— 24





SP V2 SHOES

AUTO RACING

SIZE: EUR 37-47 / US 5-13

The SP v2 Shoe is SFI homologated with an evolved design which includes: Alpinestars' newly developed asymmetric lacing system for supportive closure and customized fit plus laser perforations for breathability which are incorporated into an anatomically profiled shoe that also features Alpinestars exclusive ultra-thin Formula 1 specification sole with special line textured grip and improved pedal feel.

- + Fireproof materials and components used throughout for superior driver protection.
- + Main upper constructed from premium suede for optimum levels of durability, comfort and fit.

- + The sleek shoe profile has been developed in Formula 1 to offer optimized levels of performance both in and out of the car.
- + Full tongue upper, lateral and medial constructed from perforated leather for enhanced ventilation and optimized breathability.
- Asymmetric toe design and traditional lacing plus hidden loops closure system provide precise, secure and personalized fit.
- Para-aramidic fiber tubular lining construction for excellent heat-resistance, weight-saving and strength.
- Collar padding constructed from Nitrile rubber for comfort and weight-saving.



MANUFACTURER: Alpinestars
MODEL: SP V2 SHOES
HOM. NO: DC.097.20-Z
FIA STANDARD: 8856-2018

- Lightweight micro-porous padding around the heel and insole enhances comfort.
- FIA /Alpinestars homologation label on the tongue made from fireproof PU film transfer.
- Alpinestars foot counter features multi-compound construction and ergonomic polypropylene heel counter, which provides support, protection and stability plus integrated PU fireproof heel for comfort.
- Alpinestars exclusive ultra-thin Formula 1 specification sole uses Alpinestars exclusive lightweight rubber compound with special line textured grip and improved pedal feel.
- + Complies with the SFI 3.3/5 homologation standard.



BLACK
2710521 10

RADAR SHOES

AUTO RACING

SIZE: EUR 38-48 / US 6-14

Fully FIA homologated, the Radar Shoes have been specifically designed and developed for professional pit-crews, with a reinforced heel and toe box, fireproof Nomex, perforation zones and Alpinestars' exclusive rubber compound sole for grip and support – ideal for fast pit stops and long days in the garage.

- + Main upper constructed from leather plus bycast carbon leather on heel and toe areas for durability and protection.
- Dual closure system incorporates adjustable hook and loop

strap grip plus traditional eyelet lacing system for a personalized fit and a secure closure.

Strategically placed perforated zones for cooling performance and maximized airflow.

Collar padding constructed from Nitrile rubber for comfort and weight-saving.

Tongue features perforated soft padding for comfort and improved fit.

Collar is cut lower at the rear to allow for greater Achilles' heel comfort and improved range of movement.

Ankle support improves comfort and support when kneeling and moving quickly during pit-stops.



MANUFACTURER: Alpinestars
MODEL: RADAR SHOES
HOM. NO: DC.103.20-Z
FIA STANDARD: 8856-2018

Fireproof Nomex® fabric ensures comfort, safety, and complete foot protection.

Ergonomic heel counter features compound construction which provides support and stability.

Alpinestars' exclusive rubber compound sole plus soft EVA provides support, protection, and stability.

- + Complies with the FIA 8856-2018 and SFI 3.3 homologation standards.



BLACK WHITE
2719021 12



KARTING

20 ————— 24

KMX-5 V3 SUIT

KARTING

SIZE: 40 - 60

The KMX-5 V3 Suit was designed and developed to maximize breathability of the suit while also reducing the weight. Exclusive, all-new outer shell material developed made from a blend of polyester and polyamide and combined with soft knit lining for optimum levels of protection, light weight, and comfort. Innovative circular, laser cut perforations on the upper chest and back, with open weave mesh on the torso sides, crotch, and on the armholes, provide maximum airflow for cooling. The KMX-5 V3 Suit will keep you cool when the temperature goes up, both in and out of the kart.

- + Exclusive outer shell material, combined with soft knit lining for optimum levels of protection, light weight, and comfort.
- + Strategically positioned tech mesh panels for effective regulation of body temperature.
- + Anatomically designed arms, legs, and torso paneling to provide the optimum position while driving.
- + Advanced dual-layer construction assembly for optimized performance, improved breathability, and weight savings.
- + Innovative laser perforations on the upper chest and back for maximum

airflow and increased breathability.

- + Strategically positioned tech mesh panels on the underarms, sides of the torso, and crotch, for effective regulation of body temperature and premium ventilation.
- + Durable reinforced panels in the seat bolt area which has also been optimized for minimal material bunching.
- + Anatomically engineered, pre-curved arms and legs provide an enhanced fit and an optimum position while driving.
- + Anatomical arm, leg, and torso paneling is patterned to create the optimum position while driving.
- + Features Alpinestars new, Formula 1-derived extraction handle design and a fully floating arm.
- + New, lightweight knitted wrist and ankle cuffs for maximum comfort and reduced weight.
- + Premium YKK metal zipper, plus double slider for a versatile and customizable fit.
- + Thigh pockets for convenient, unobtrusive storage.
- + Athletic-Regular fit design.
- + Certified to the NEW FIA 8877-2022 Grade 1 homologation standard.



BLACK DARK SHADOW
3353024 1065



BLACK WHITE
ORANGE FLUO
3353024 1241



WHITE BLACK
BRIGHT RED
3353024 2030

KMX-9 V3 SUIT

KARTING

SIZE: 40 - 60

Certified to FIA homologation standards, the KMX-9 v3 Suit is the perfect choice for both entry and intermediate level racers. Boasting an advanced, dual-layer construction for protection and lightness, this suit also has a 100 percent polyester toweling liner for premium comfort. Additional driver-friendly design details include an angled front opening, stretch panels on the back, shoulders and waist for an optimized fit, and breathable mesh material on the crotch and underarms.

- + Advanced two-layer construction assembly for protection, improved breathability, and weight savings.
- + Engineered for durability, minimal material bunching and abrasion resistance, while the poly-toweling lining boasts moisture-wicking properties.
- + Strategically positioned tech mesh panels on underarms and crotch for increased airflow.
- + Knitted stretch panels on back, shoulders, and lumbar area ensure minimal material

resistance while driving.

- + Features Alpinestars new Formula 1-derived epaulette design.
- + Anatomically designed arms, legs, and torso paneling provide the optimum position while driving.
- + Ergonomic collar with soft knitted lining for extended coverage and maximum comfort with safe closure system.
- + Knitted wrist and ankle cuffs for maximum comfort and reduced weight.
- + Two thigh pockets for convenient storage of personal items.
- + Premium YKK metal zipper, with personalized zipper pullers, plus double slider for a versatile and customizable fit.
- + Adjustable waist belt allows a tight personalized fit.
- + Athletic-Regular fit design.
- + Certified to the NEW FIA 8877-2022 Grade 1 homologation standard.



BLACK RED FLUO
3356024 1030



BLACK YELLOW FLUO
3356024 155



BLACK RED WHITE
3356024 132



BLACK WHITE
3356024 12



FIA APPROVED

MANUFACTURER: Alpinestars
MODEL: KMX-9 V3
HOM. NO: KC.001.23-O
FIA STANDARD: 8877-2022



KMX-9 V3 GRAPHIC SUIT

KARTING

SIZE: 40 - 60

Certified to CIK FIA homologation standards, the KMX-9 v2 Suit features an aggressive design and vibrant colorways for entry and intermediate level racers. Boasting a two-layer construction for protection and lightness, this suit also has a 100 percent polyester toweling liner for driver comfort. Other driver-friendly design details include an angled front opening, stretch panels on the back, shoulders and waist for an optimized fit, and breathable mesh material on the crotch and underarms.

- + Advanced two-layer construction assembly for optimized performance, improved breathability and weight saving.
- + Engineered for durability, minimal material bunching and abrasion resistance, while the poly-toweling lining boasts moisture-wicking properties.
- + Alpinestars asymmetric front opening design aids fitting.
- + Knitted stretchable panels on back shoulder and lumbar area ensure minimal material resistance while driving.
- + Tech mesh panels positioned on the under-

arms and seat area for optimized ventilation.

- + Alpinestars Formula 1-derived design and technology shoulder epaulettes.
- + Ergonomic collar with soft knitted lining for extended coverage and maximum comfort with safe closure system.
- + Anatomical arm, leg and torso paneling is patterned to create the optimum position while driving.
- + Knitted wrist and ankle cuffs provide a snug fit and help prevent unwanted movement of the suit.
- + Two thigh pockets offer a convenient storage option for those times away from the driving seat.
- + Premium YKK zipper with personalized zipper pullers, plus double slider for versatile and customizable fit.
- + Adjustable waist belt allows a tight personalized fit.
- + Comes in a wide range of aggressive new colorways.
- + Certified to CIK-FIA Level 2 homologation standard. N 2013-1.



GRAPHIC 3
BLACK RED
3356424 13

GRAPHIC 4 BLACK
CYAN
YELLOW FLUO
3356124 1757

GRAPHIC 5
DARK GRAY BLACK
3356124 9310

GRAPHIC 2
RED BLACK BRASS
BROWN
3356324 3008



GRAPHIC 3
BLACK YELLOW FLUO
3356424 155

GRAPHIC 2
BLACK CYAN FUCHSIA
3356324 1734

GRAPHIC 5
NAVY RED
3356124 7138



KART INDOOR SUIT

KARTING

SIZE: XS - 3XL



Designed for recreational karting and leisure use, the Kart Indoor Suit brings cutting edge auto technology to the track. Boasting a single-layer twill construction for durability, the suit features an elastic waist belt, an adjustable Velcro belt and collar and a gusset on the calf to allow drivers and mechanics to get the fit just so. Comfort is taken care of thanks to the foam neck padding and the pre-curved sleeves, while practical touches include pockets at the waist and an additional pocket on the chest.

- + Advanced single-layer construction assembly.
- + Poly-cotton twill material engineered for durability, minimal material bunching and strength resistance properties.
- + Alpinestars asymmetric

- front opening design.
- + Formula 1-derived design and technology shoulder design.
- + Durable metal zipper at center front.
- + Ergonomic collar with soft lining for extended coverage and maximum comfort.
- + Adjustable waist belt allows a tight, personalized fit.
- + Thigh pockets offer a convenient storage option for those times away from the driving seat.
- + Inner chest pocket with hook and loop closure for mobile phone storage.
- + Leg bottom with hook-loop adjustment and wide gusset.
- + Knitted cuff helps prevent unwanted movement of the suit.



ROYAL BLUE RED 335 7019 793
 RED BLACK 3357019 31
 BLACK RED 3357019 13

KMX-9 V3 S SUIT

YOUTH KARTING

SIZE: 120-130-140-150



Certified to FIA homologation standards, the KMX-9 v3 S Suit Youth is the perfect choice for both entry and intermediate level racers. Boasting an advanced, dual-layer construction for protection and lightness, this suit also has a 100 percent polyester toweling liner for premium comfort. Additional driver-friendly design details include an angled front opening, stretch panels on the back, shoulders and waist for an optimized fit, and breathable mesh material on the crotch and underarms.

- + Exclusive outer shell material, combined with soft knit lining for optimum levels of protection, light weight, and comfort.
- + Strategically positioned tech mesh panels for effective regulation of body temperature.
- + Anatomically designed arms, legs, and torso paneling to provide the optimum position while driving.
- + Advanced two-layer construction assembly for protection, improved breathability, and weight savings.
- + Engineered for durability, minimal material bunching and abrasion resistance, while the poly-toweling lining boasts moisture-wicking properties.

- + Strategically positioned tech mesh panels on underarms and crotch for increased airflow.
- + Knitted stretch panels on back, shoulders, and lumbar area ensure minimal material resistance while driving.
- + Features Alpinestars new Formula 1-derived epaulette design.
- + Anatomically designed arms, legs, and torso paneling provide the optimum position while driving.
- + Ergonomic collar with soft knitted lining for extended coverage and maximum comfort with safe closure system.
- + Knitted wrist and ankle cuffs for maximum comfort and reduced weight.
- + Two thigh pockets for convenient storage of personal items.
- + Premium YKK metal zipper, with personalized zipper pullers, plus double slider for a versatile and customizable fit.
- + Adjustable waist belt allows a tight personalized fit.
- + Athletic-Regular fit design.
- + Certified to the NEW FIA 8877-2022 Grade 1 homologation standard.



BLACK YELLOW FLUO 3356524 155
 BLACK RED FLUO 3356524 1030

KMX-9 V3 S GRAPHIC 3 SUIT

YOUTH KARTING

SIZE: 120-130-140-150



Certified to FIA homologation standards, the KMX-9 v3 S Suit Youth is the perfect choice for both entry and intermediate level racers. Boasting an advanced, dual-layer construction for protection and lightness, this suit also has a 100 percent polyester toweling liner for premium comfort. Additional driver-friendly design details include an angled front opening, stretch panels on the back, shoulders and waist for an optimized fit, and breathable mesh material on the crotch and underarms.

- + Exclusive outer shell material, combined with soft knit lining for optimum levels of protection, light weight, and comfort.
- + Strategically positioned tech mesh panels for effective regulation of body temperature.
- + Anatomically designed arms, legs, and torso paneling to provide the optimum position while driving.
- + Advanced two-layer construction assembly for protection, improved breathability, and weight savings.
- + Engineered for durability, minimal material bunching and abrasion resistance, while the poly-toweling lining boasts moisture-wicking properties.
- + Strategically positioned tech

mesh panels on underarms and crotch for increased airflow.

- + Knitted stretch panels on back, shoulders, and lumbar area ensure minimal material resistance while driving.
- + Features Alpinestars new Formula 1-derived epaulette design.
- + Anatomically designed arms, legs, and torso paneling provide the optimum position while driving.
- + Ergonomic collar with soft knitted lining for extended coverage and maximum comfort with safe closure system.
- + Knitted wrist and ankle cuffs for maximum comfort and reduced weight.
- + Two thigh pockets for convenient storage of personal items.
- + Premium YKK metal zipper, with personalized zipper pullers, plus double slider for a versatile and customizable fit.
- + Adjustable waist belt allows a tight personalized fit.
- + Athletic-Regular fit design.
- + Certified to the NEW FIA 8877-2022 Grade 1 homologation standard.



BLACK RED
3356924 13

BLACK YELLOW FLUO
3356924 155

KMX-9 V3 S GRAPHIC 5 SUIT

YOUTH KARTING

SIZE: 120-130-140-150



Certified to FIA homologation standards, the KMX-9 v3 S Suit Youth is the perfect choice for both entry and intermediate level racers. Boasting an advanced, dual-layer construction for protection and lightness, this suit also has a 100 percent polyester toweling liner for premium comfort. Additional driver-friendly design details include an angled front opening, stretch panels on the back, shoulders and waist for an optimized fit, and breathable mesh material on the crotch and underarms.

- + Exclusive outer shell material, combined with soft knit lining for optimum levels of protection, light weight, and comfort.
- + Strategically positioned tech mesh panels for effective regulation of body temperature.
- + Anatomically designed arms, legs, and torso paneling to provide the optimum position while driving.
- + Advanced two-layer construction assembly for protection, improved breathability, and weight savings.
- + Engineered for durability, minimal material bunching and abrasion resistance, while the poly-toweling lining boasts moisture-wicking properties.
- + Strategically positioned tech

mesh panels on underarms and crotch for increased airflow.

- + Knitted stretch panels on back, shoulders, and lumbar area ensure minimal material resistance while driving.
- + Features Alpinestars new Formula 1-derived epaulette design.
- + Anatomically designed arms, legs, and torso paneling provide the optimum position while driving.
- + Ergonomic collar with soft knitted lining for extended coverage and maximum comfort with safe closure system.
- + Knitted wrist and ankle cuffs for maximum comfort and reduced weight.
- + Two thigh pockets for convenient storage of personal items.
- + Premium YKK metal zipper, with personalized zipper pullers, plus double slider for a versatile and customizable fit.
- + Adjustable waist belt allows a tight personalized fit.
- + Athletic-Regular fit design.
- + Certified to the NEW FIA 8877-2022 Grade 1 homologation standard.



NAVY RED
3356624 7138



TECH-1 KX V4 GLOVES

KARTING

SIZE: S-2XL

The Tech-1 KX V4 Glove is a premium karting glove that delivers high-performance levels. The gloves feature external seams for superior comfort, designed to prevent any pressure points from forming on the hands while driving. Other neat design touch of the TECH-1 KX V4 include the glove's synthetic suede leather palm with its silicon surface for improved flexibility and grip.

- + New and advanced breathable mesh two-layer mesh construction provides optimal comfort and fit, as well as offers exceptional breathability. 3D silicone print palm gives excellent levels of grip with more feel, and better fit and less material bunching when holding the wheel. First gloves homologated to FIA new karting standard.
- + Advanced, dual-layer, breathable stretch mesh main assembly with bonded stretch lining provides the optimal combination of comfort and fit.
- + Technical construction methods result in significant weight reduction.

- + New, breathable mesh construction on the finger sidewalls to enhance breathability and reduce sweating.
- + External seams offer high level of performance, superior comfort and prevent any pressure points on the fingers while driving.
- + Pre-curved finger and innovative palm design improves fit and reduces fatigue while driving.
- + Open weave mesh fourchettes for greater breathability.
- + Ergonomically designed 3D grip print technology on palm and fingers with strategically positioned silicon surface patterning for improved flexibility, grip, and control.
- + Ribbed cuff for slim fit at wrist.
- + Touchscreen compatible.
- + Alpinestars cuff opening has a 180° elasticated wrist for easy entry and a secure fit.
- + Certified to the NEW FIA 8877-2022 Grade 1 homologation standard.



TAR GRAY BLACK
YELLOW FLUO
3551824 9151



BLACK ORANGE FLUO
3551824 156



BLACK ANTHRACITE
3551824 104



BLACK RED
3551824 13



BLACK BLUE
3551824 17



BLACK WHITE RED
3551824 123



TECH-1 K V3 GLOVES

KARTING

SIZE: S-2XL

The TECH-1 K V3 Gloves have been designed to offer exceptional comfort, feel and high levels of performance to professional drivers. Featuring semi-external stitching for excellent levels of feel and feedback, this glove also has a synthetic suede leather palm for feel and control, with a silicon surface treatment on the palm and fingers for improved flexibility and control.

- + 4-way stretch, two-layer, bonded fabric offers comfort and fit. Silicone print palm gives maximum grip on the wheel. First gloves homologated to FIA new karting standard.
- + New sublimated main assembly with bonded stretch lining to ensure an enhanced fit and full graphic design.
- + 4-way stretch, dual-layer nylon-cotton construction provides the optimum combination of feel and comfort, as well as offers an enhanced fit.

+ Combination of technical material construction methods result in a significant reduction in

the glove's weight as well as high levels of sensitivity and feel.

- + Semi-external seams on palm offer excellent comfort.
- + Equipped with synthetic suede palms for durability, feel and comfort.
- + Pre-curved fingers and innovative palm design for improved fit.
- + Ergonomically designed grip treatment with improved Silicone palm print for maximum grip and reduced bunching in palm area.
- + Straight-cut cuff design ensures an easy and secure fit.
- + Gauntlet cuff incorporates a 180° elasticated wrist for easy entry and a secure fit.
- + Certified to the NEW FIA 8877-2022 Grade 1 homologation standard.



WHITE FUCHSIA BLACK
3551724 295



BLACK WHITE RED
3551724 123



BLACK ANTHRACITE
3551724 104



BLACK ORANGE WHITE
3551724 134



TECH-1 K RACE V2 COMPETITION GLOVES

KARTING

SIZE: S-2XL

The lightweight, TECH-1 K Race V2 sports Competition Gloves feature a new construction of polyester bonded with polyester-mesh to offer superb levels of durability, comfort, fit and feel. The glove has internal seams and synthetic suede leather on the palm to allow for excellent levels of comfort, feel and grip. There are also mesh fourchettes on one half of the fingers and Lycra on the other half for the perfect blend of ventilation, flexibility, and comfort, as well as a silicon surface treatment on the palm and fingers for improved flexibility and control. The TECH-1 K Race V2s are equipped with Alpinestars open cuff design with a 180° elasticated wrist for easy entry and a secure fit. The glove's lightweight, polyester-mesh construction provides optimum feel and enhanced comfort in warm weather conditions.

- + Lightweight, polyester-mesh construction provides optimum feel and enhanced comfort.
- + New ergonomically designed silicone print on palm areas for improved mobility and grip.
- + Synthetic suede material on palms for enhanced durability.
- + Touchscreen compatible.
- + Mesh and Lycra fourchettes promote comfort, airflow, and durability.
- + Pre-curved fingers and palms aids fit while reducing material bunching.
- + Gauntlet cuff with 180° elasticated wrist for easy entry and a secure fit.
- + Digital print on surface for an aggressive racing-inspired aesthetic.



YELLOW FLUO
BLUE WHITE
3553224 572



FUCHSIA CYAN WHITE
3553224 3035



TECH-1 K RACE V2 GLOVES

KARTING

SIZE: S-2XL

The TECH-1 K v2 Gloves have been designed to offer exceptional comfort, feel and high levels of performance to professional drivers. Featuring internal stitching for excellent levels of feel and feedback, this glove also has a synthetic suede leather palm for feel and control, with a silicon surface treatment on the palm and fingers for improved flexibility and control. The TECH-1 K v2 Glove is also equipped with Alpinestars open cuff design with a 180° elasticated wrist for easy entry and a secure fit, and mesh fourchettes on all fingers for excellent levels of airflow.

- + Two-layer stretch nylon-cotton construction provides the optimum combination of feel and comfort.
- + Combination of technical material

construction methods result in a significant reduction in the glove's weight as well as high levels of sensitivity and feel.

- + Ergonomically designed grip treatment plus synthetic suede palms for improved feel, durability, mobility, and grip.
- + Mesh fourchettes provide greater airflow while driving.
- + Equipped with synthetic suede palms for durability, feel and comfort.
- + Pre-curved finger and innovative palm design aids fit while reducing material bunching.
- + Straight cut cuff design ensures an easy and secure fitment.
- + Gauntlet cuff incorporates a 180° elasticated wrist for easy entry and secure fit.



TECH-1 K RACE S V2 GLOVES

YOUTH KARTING

SIZE: S - XL

The lightweight Tech-1 K Race S v2 sports glove model features a new construction of polyester bonded with polymesh to offer superb levels of durability, comfort, fit and feel, and has internal seams and synthetic suede leather on the palm to allow for excellent levels of comfort, feel and grip. There are also mesh fourchettes on one half of the fingers and Lycra on the other half for the perfect blend of ventilation, flexibility, and comfort, with a silicone surface treatment on the palm and fingers for improved flexibility and control. It is also equipped Alpinestars open cuff design with a 180° elasticated wrist for easy entry and a secure fit, and a touch compatible print on thumb and index fingers for using mobile devices while at the track.

- + Lightweight, polyester-mesh construction provides optimum feel and enhanced comfort in warm weather conditions.
- + New ergonomically designed silicone print on palm areas for improved mobility and grip.
- + Synthetic suede material on palm for enhanced durability.
- + Touchscreen compatible fingertips.
- + Mesh fourchettes promote comfort, airflow, and durability.
- + Pre-curved finger and palm aids fit while reducing material bunching.
- + Gauntlet cuff incorporates a 180° elasticated wrist for easy entry and a secure fit.
- + Digital print on surface for an aggressive aesthetic.



ORANGE FLUO
3553023 440



YELLOW FLUO
3553023 55



BLACK TAR GRAY
3552123 1169



ANTHRACITE LIME
3552023 164



RED BLACK
3552023 31



RED TANGERINE
3552223 3340



NAVY BLUE CREST
3552223 78



RED TANGERINE
3552923 3340



NAVY BLUE CREST
3552923 78



BLACK TAR GRAY
3552623 1169



ANTHRACITE LIME
3552723 164



RED BLACK
3552723 31



TEMPEST V2 WATERPROOF GLOVES

WET WEATHER KART RACING

SIZE: XS-2XL

The Tempest V2 Waterproof Glove is a versatile, wet weather glove featuring a three-layer construction for proven waterproof performance and a full fleece lining for warmth, while an advanced rubber composite palm offers excellent grip and control in difficult conditions on the kart track.

- + Fleece lining delivers soft comfort and a warm feeling on the hands.
- + Advanced rubber composite palm ensures excellent levels of grip with the wheel, whatever the weather.
- + Adjustable cuff with flap and Velcro for a secure closure.

- + Pre-curved finger aids fit while reducing material bunching.
- + Straight cut cuff design ensures an easy and secure fitment.
- + Gauntlet cuff incorporates a 180° elasticated wrist for easy entry and secure fit.



BLACK FLUO GREEN
3552321 167

TEMPEST V2 S WATERPROOF GLOVES

YOUTH WET WEATHER KART RACING

SIZE: S-XL

The Tempest V2 S Waterproof Glove is a versatile, wet weather glove featuring a three-layer construction for proven waterproof performance and a full fleece lining for warmth, while an advanced rubber composite palm offers excellent grip and control in difficult conditions on the kart track.

- + Fleece lining delivers soft comfort and a warm feeling on the hands.
- + Advanced rubber composite palm ensures excellent levels of grip with the wheel, whatever the weather.

- + Pre-curved finger aids fit while reducing material bunching.
- + Straight cut cuff design ensures an easy and secure fitment.
- + Gauntlet cuff incorporates a 180° elasticated wrist for easy entry and secure fit.



BLACK FLUO GREEN
3542321 167

ENGINE GLOVES

MECHANICS

SIZE: S-2XL

The Engine Glove is a hybrid multi-material glove which offer high levels of comfort and protection. Soft, lightweight and flexible, the glove has mesh panels for optimum levels of breathability, while the tough synthetic suede leather palm means it is highly durable. It's also reassuringly protective thanks to the strategically positioned TPR on the knuckles. Another neat feature is the conductive print on the palm and fingers which allows mechanics to operate a tablet while wearing the gloves.

- + Lightweight, multi-material glove incorporating a stretch mesh and stretch fabric on the top of the hand.
- + Stretch mesh and stretch fabric offer comfort and cooling performance.
- + Synthetic suede palm with padding provides grip, durability and tactility.

- + Advanced TPR knuckle insert offers impact protection without compromising on hand dexterity.
- + Hook and loop grip cuff closure on the back of the hand for a precise fit.
- + Strategic 2mm foam padding on fingers for fit and comfort.
- + Ergonomic stretch insert between thumb and palm and on backhand offers flexibility to vastly improve hand movement.
- + Sublimated, fade-resistant color on back of the hand for a distinctive look.
- + Synthetic suede thumb reinforcement for durability and seam reinforcement.
- + Touchscreen compatible fingertip for use with handheld devices.
- + Short cuff styling.



BLACK GRAY
3552519 106



BLACK YELLOW FLUO
3552519 155



TECH-1 KZ V2 SHOES

KARTING

SIZE: EUR 34-47 / US 2.5-13

Designed to be light, fast, and extremely comfortable, the TECH-1 KZ V2 Shoe uses state of the art flat knitting technology for a fully knitted upper construction that adapts perfectly to the driver's feet.

PU film and padded reinforcements provide the support and protection required while the dual ankle strap closure and instep lacing adjustment keep them perfectly in place.

Advanced seamless thermo-welded construction consists of ultra-thin PU film and textile to provide premium, lightweight performance and excellent comfort and fit.

- + Lightweight one-piece heel and insole construction for enhanced heel lockdown and comfort while driving.
- + Elastic top collar and instep zone made in knitted upper textile.
- + Sleek shoe profile conforms to the anatomy of the foot and ensures great fit and performance.
- + Dual strap hook and loop closure in the instep and top collar area to ensure a perfect and secure fit.
- + Additional instep fit adjustment for providing a perfect fit closure.
- + Lateral side made from textile material to provide breathability.

+ 3D printed square graphics enhance the protection and structure of the shoes.

- + Internal toe reinforcement for abrasion resistance and protection.
- + Laser cut outs on the toe and medial side for added ventilation.
- + Collar padding constructed from PU foam for comfort and weight-savings.
- + Alpinestars' exclusive Formula 1-derived, thin rubber compound outer sole delivers unsurpassed levels of feel and sensitivity with the pedals, while the textured pattern ensures optimum levels of grip.



2713023 1059
BLACK WHITE GOLD

2713023 155
BLACK YELLOW FLUO

2713023 156
BLACK ORANGE FLUO

2713023 1795
BLACK ENAMEL BLUE
YELLOW FLUO

LIMITED
EDITION



2713023 1795
BLACK ORANGE FLUO
CAMO



TECH-1 KX V3 SHOES

KARTING

SIZE: EUR 34-47 / US 2.5-13

Bringing Formula 1-derived features, along with specific innovations for the kart track, the new Tech-1 KX V3 Shoe is now lighter and more breathable with a revised asymmetric lacing system to conform more closely to the foot. The use of thin PU film adds durability whilst reducing seam construction and pressure points. Laser cut-outs and perforations in the film, combined with 3D mesh, offer maximum breathability.

- + The TECH-1 KX V3 Shoe has an advanced, seamless thermo-welded construction consisting of ultra-thin PU film and textile to provide supremely lightweight performance and excellent comfort and fit.
- + Laser cut air-intakes and perforations on toe and both sides for added breathability.
- + First shoes homologated to new FIA karting standard. Advanced seamless thermo-welded construc-

tion consists of ultra-thin PU film and 3D mesh to provide supremely lightweight performance and excellent comfort and fit.

- + Sleek shoe profile conforms to the anatomy of the foot and ensures great fit and performance.
- + Laser-cut air-intakes and perforations on upper, with 3D mesh on tongue provide excellent breathability and comfort.
- + External heel, ankle and internal toe reinforcements for abrasion resistance and protection.
- + Dual, asymmetric closure system incorporates adjustable strap, and an aramidic, speed lacing system in the instep with Alpinestars' exclusive wire closure system that offers optimal support, precise fit, and a secure closure.
- + New super-light tongue construction combining micro suede and 3D mesh, provides excel-



2712124 123
BLACK WHITE





TECH-1 KX V2 SHOES

KARTING

SIZE: EUR 34-47 / US 2.5-13

Bringing Formula 1 derived features, along with specific innovations for the kart track, the new Tech-1 KX V2 Shoe is now lighter and more breathable with a revised asymmetric lacing system to conform more closely to the foot. The use of thin PU film adds durability whilst reducing seam construction and pressure points. Laser cut-outs and perforations in the film, combined with 3D mesh, offer maximum breathability.

- + Advanced seamless thermo-welded construction consists of ultra-thin PU film and 3D mesh to provide supremely lightweight performance and excellent comfort and fit.
- + Sleek shoe profile conforms to the anatomy of

the foot and ensures great fit and performance.

- + Laser-cut air-intakes and perforations on upper, with 3D mesh on tongue offer excellent breathability and comfort.
- + External heel, ankle, and internal toe reinforcements for abrasion resistance and protection.
- + Dual asymmetric closure system incorporates adjustable hook-and-loop ultra-thin strap plus aramidic speed top lacing with Alpinestars' exclusive wire closure system. The system strategically envelopes the foot for optimal support and offers precise fit and secure closure.
- + New superlight tongue construction combining micro suede and 3D mesh, provides excel-

lent breathability and superior comfort.

- + Collar padding constructed from PU foam for comfort and weight-savings.
- + Soft microfiber collar is cut lower at the rear to give greater Achilles' heel comfort and improved range of movement.
- + Lightweight, one-piece heel and insole construction for enhanced heel lockdown and comfort whilst driving.
- + Alpinestars exclusive thin rubber compound outsole, derived from Formula 1's Race Program, delivers unsurpassed levels of feel and sensitivity with the pedals, while the textured pattern ensures optimum levels of grip.



TECH-1 K V2 SHOES

KARTING

SIZE: EUR 34-47 / US 2.5-13

The Tech-1K v2 Shoe is ultra-lightweight shoe, optimized for maximum airflow and breathability. With its contoured shape, the shoe is more more proportioned to better adapt to the morphology of the feet, thereby improving comfort in the cockpit and reducing driver fatigue. There is also an ergonomic foot bed to ensure the foot maintains a natural, comfortable posture while also allowing maximum flexibility, support and free foot movement.

- + Advanced hybrid construction consisting of durable Nubuck microfiber upper and strategically positioned perforated microfiber areas to ensure light weight, excellent breathability and superior feel.
- + The external toe reinforcement is con-

structed using 3D rubber print for superior abrasion resistance and protection.

- + The dual and asymmetric closure system incorporates an adjustable hook and loop strap plus a traditional lace loop system coupled with a para-aramidic eyelets system for enhanced durability, as well as a more personalized fit and a secure closure.
- + The new superlight tongue is constructed from a combination of perforated microfiber and mesh giving for optimum breathability and airflow and superior feeling.
- + Strategically-positioned perforation zones on lateral and medial sides and toe for giving breathability
- + The collar is cut lower at the rear to allow for greater Achilles' heel comfort and

an improved range of movement.

- + Alpinestars innovative foot counter is engineered for maximum performance: an ergonomic, polypropylene heel counter provides support and stability inside the shoe, while a flatter forefoot with die-cut ribbing provides greater feel with the pedals.
- + The ultra-thin Formula 1 specification sole uses Alpinestars exclusive rubber compound which is strategically ribbed for enhanced pedal sensitivity and grip in both wet and dry conditions.
- + External rear heel rubber for improved abrasion resistance and protection.
- + Integrated PU heel for additional driver comfort.



BLACK DARK GRAY
GREEN FLUO
2712123 1116

BLACK WHITE RED
2712123 123

BLACK WHITE YELLOW
FLUO
2712123 125

WHITE ORANGE FLUO
BLACK
2712123 2041

RED BLACK WHITE
2712123 312

ULTRAMARINE BLUE
RED FLUO YELLOW
2712123 7135



BLUE BLACK WHITE
2712022 712

RED BLACK WHITE
2712022 312

WHITE BLACK RED
2712022 213

BLACK WHITE YELLOW
FLUO
2712022 125

BLACK WHITE
2712022 12

BLACK ORANGE FLUO
WHITE
2712022 1142



TECH-1 K START V2 SHOES

KARTING

SIZE: EUR 34-48 / US 2.5-14

With a newly designed forefoot profile, Achilles-friendly collar design, breathable laser perforations and reinforced external heel, the Tech-1 K Start shoe is constructed from durable and lightweight microfiber for optimized levels of protection, comfort and performance fit.

+ Designed and developed specifically for the stresses of kart racing.
Main upper constructed from durable microfiber for lightweight performance, comfort and abrasion resistance.

Integrated construction consisting of perforated microfiber and soft inner lining for high levels of comfort and breathability.
New sleek shoe profile follows foot anatomy and guarantees great fit and performance.
Strategically positioned perforation zones for enhanced cooling performance and maximized airflow.
Collar padding constructed from Nitrile rubber for comfort and weight-saving.
Traditional symmetric lacing system for personalized fit and secure closure.
All graphic elements are printed for excellent weight-saving.

Lightweight micro-porous padding around the heel and insole enhances comfort.
Alpinestars foot counter features multi-compound construction ergonomic polypropylene heel counter, which provides support, protection and stability plus an integrated PU fireproof heel for comfort.
Lightweight rubber compound sole with textured grip and improved pedal feel in race conditions.
External heel real rubber for improved abrasion resistance and protection.



ASPHALT BLACK
ORANGE FLUO
2711521 9140

BLACK WHITE LIGHT
BLUE
2711521 1278

BLACK WHITE
2711521 12

WHITE BLACK
YELLOW FLUO
2711521 215

BLACK WHITE RED
2711521 123

TECH-1 K S SHOES

YOUTH KARTING

SIZE: EUR 30-32 / US 2.5-13

An aggressively-styled driving shoe specifically developed for youth drivers, the Tech-1 K S Shoe is constructed from a lightweight microfiber and 3D mesh inserts for high levels of comfort, durability and breathability. Performance features include an innovative rounded heel for support and Alpinestars exclusive rubber compound sole for improved pedal sensitivity and grip.

+ Designed and developed specifi-



BLACK WHITE RED
2712518 123

BLACK WHITE
ORANGE FLUO
2712518 1241

BLACK WHITE
YELLOW FLUO
2712518 125

cally for the stresses of kart racing.

- + Designed and constructed especially for young drivers and cadets and incorporating aggressive styling.
- + Light and durable advanced microfiber and mesh construction offers excellent comfort and feel.
- + 3D mesh inserts on the tongue and perforated microfiber panels on the heel and sides offer excellent ventilation.

- + Innovative heel counter and lateral forefoot structure offers support and stability.
- + Traditional symmetric lace closure system and hook and loop grip strap offers safe and secure fitting.
- + Padded sole incorporates improved Alpinestars exclusive rubber compound for improved pedal sensitivity and grip in all conditions.



META ROAD SHOES

SIZE US: 4.5-13.5 / EUR: 37.5-49

Designed for perfect all-day comfort for life in the paddock, the Meta Road performance running shoe is also a popular choice for management, technicians, and mechanics at the track. An extremely comfortable sport casual shoe with a single-piece mesh upper for minimal build material construction and high levels of breathability. The unique proprietary mid sole offers cushioning and support, while the outer sole is oil-resistant for optimized levels of performance.

- + Easy to slip on design with large toe box allows the toes to spread when kneeling for greater levels of comfort.
- + High resiliency, EVA insert located in the main midsole beneath the heel provides long-lasting softness.
- + Midsole wall wrapping snugly secures the foot and

provides good stability and comfort.

- + Oil-resistant rubber sole improves grip on dirty surfaces.
- + Removable inner sock with open cell PU compound provides high breathability, reduces overheating, and offers high durability, and superb overall comfort.
- + Lightweight minimal construction with 360° tongue configuration ensures a glove-like fit.
- + Dual density PU foam is anatomically positioned to hold the ankle securely in place.
- + Flexible elastic laces allow the shoe to be secure while providing an amount of movement when worn for optimal levels of comfort.
- + Reflective detailing on the back.



RED WHITE
2654520 32

BLUE WHITE
2654520 72

BLACK DARK GRAY
2654520 111

BLACK WHITE GREEN
2654520 163

META TRAIL SHOES

SIZE US: 4.5-13.5 / EUR: 37.5-49

Designed for perfect all-day comfort for life in the paddock, the Meta Trail performance running shoe is the popular choice for management, technicians, and mechanics at the track. An extremely comfortable sport casual shoe with a single-piece mesh upper for minimal build material construction and high levels of breathability. The unique proprietary mid sole offers cushioning and support, while the outer sole is oil-resistant for optimized levels of performance.

- + Easy to slip on design with large toe box allows the toes to spread when kneeling for greater levels of comfort.
- + High resiliency, EVA insert located in the main midsole beneath the heel provides long-lasting softness.
- + Midsole wall wrapping snugly secures the foot and provides good stability and comfort.

- + Oil-resistant rubber sole improves grip on dirty surfaces.
- + Removable inner sock with open cell PU compound provides high breathability, reduces overheating, and offers high durability, and superb overall comfort.
- + Lightweight minimal construction with 360° tongue configuration ensures a glove-like fit and in combination with the quarter panel offers enhanced foot stability and protection.
- + Dual density PU foam is anatomically positioned to hold the ankle securely in place.
- + Flexible elastic laces allow the shoe to be secure while providing an amount of movement when worn for optimal levels of comfort.
- + Reflective detailing on the back.



RED WHITE
2654820 32

BLACK ORANGE
2654820 14

BLACK DARK GRAY
2654820 111

PROTECTORS

20 ————— 24





AK-1 KART BODY PROTECTOR

PROTECTION

SIZE: XXS/XS - S/M - L/XL (YOUTH: S/M - L - XL)

The AK-1 Kart Body Protector is a high-performance and race-orientated FIA STANDARD 8870-2018 homologated karting body protector. Ergonomically designed and constructed with weight-saving materials to ensure a superb fit. Super easy to wear as well as put on or remove due its clever use of a speed-lace closure system and dual adjustable elastic shoulder straps. The AK-1 Kart Body Protector offers superior protection while being super light and comfortable to wear.

CONSTRUCTION

Rib Protectors:

+ Rib protectors are constructed from a carbon fiber thermoset material backed by a soft touch comfort padding.

+ Pre-curved to offer a snug fit without obstructing movement.

Chest Protector:

+ Chest protector made from a high-performance thermoplastic polymer

backed with a thermoformed padding.

+ Ergonomically profiled for a superb fit.

Back Protector:

+ Back protector made from a high-performance thermoplastic polymer backed with a thermoformed padding.

Designed to minimize the distance between the seat and back.

Innovative Speed-Lace Closure System & Straps

+ Extremely easy to put on due to the speed-lace system.

+ Adjustable elastic shoulder straps.

+ Available in a Youth version.

PROTECTION

+ Regulation (eu) 2016/425

+ Fia standard 8870-2018



6531024 123
BLACK WHITE RED

AVAILABLE IN A
YOUTH VERSION



6541024 123
BLACK WHITE RED





BIONIC RIB SUPPORT

PROTECTION

SIZE: S - L / XL - 3XL (YOUTH OS)

A high-performance, lightweight, ergonomically constructed supportive guard for the ribs, the Bionic Rib Support incorporates adjustable shoulder straps, a central chest belt and an adjustable back panel to offer kart drivers a supremely comfortable, customized and supporting fit.

+ The technical, multi-layered main construction has been optimized for a performance fit and enhanced comfort:

+ The advanced, soft poly-Lycra inner lining means the Bionic Rib Support can be worn under or over a garment.

+ The main body incorporates a 3mm high density poly-foam layer laminated with 3mm absorption EVA for enhanced impact and anti-vibration performance.

+ 600D textile outer for high resistance to friction and

enhanced durability.

+ Dual-density, strategically positioned, ergonomically shaped rib guards incorporate fiberglass core and robust PE hardshell outer for excellent shock dispersion and damping performance.

+ The specially selected materials and components to offer crucial weight-saving performance.

+ Central adjustable back panel with hook and loop attachments offers a complete range of fitment, allowing the guard to be worn under or over a garment.

+ The fully adjustable front strap with D-ring closure features elasticated section for comfort.

+ The adjustable shoulder straps are constructed from highly breathable 3D mesh for optimum airflow and feature an elasticated gusset for a snug performance fit.



BLACK RED
6537013 13

BLACK YELLOW FLUO
6537013 155



YOUTH BLACK YELLOW
FLUO
6547013 155

YOUTH BLACK RED
6547013 13



BLACK YELLOW FLUO
6540118 155



BLACK ORANGE
6540118 14



BLACK WHITE
654 0118 12

YOUTH NECK SUPPORT

YOUTH PROTECTION

SIZE: OS

+ Designed and developed for a fit that is specific to a youth driver's anatomy.

+ Frame constructed from injected polymer compound that has been extensively impact tested at performance on a range of off-road surface and varying temperatures.

+ Frame has been ergonomically engineered to promote contact with the helmet during impact – including rear support edge that fits closer to the body and raised chest to avoid hyper-flexion injuries – thus providing a solid surface which instantly channels damaging, compressive impact energy away from the neck and on to the support.

+ Frame's anatomical profile promotes positive helmet contact

in event of a crash while allowing driver freedom of movement.

+ Rear stabilizer system helps keeps support in position and is also designed to channel extreme energy loads away from the spine by transmitting it across the shoulder and helping to avoid serious spinal injury.

+ Ultra-lightweight EVA foam on the support's underside for comfort and positioning and to distribute the impact force over the widest possible area.

+ Closure system for convenient engagement of support and to facilitate quick removal in case of emergency.

+ The support is supplied with the easy-to-use strap system which allows use over or under the suit to secure the device on the driver.

SEQUENCE YOUTH NECK ROLL

YOUTH PROTECTION

SIZE: S - XL

+ Hybrid kids neck protection with extended tail for high position stability.

+ Ergonomic designed and engineered shape to fit kids from 6-10 yrs. and from 10-14 yrs.

+ Double density core is made from a soft PU foam base embedding a hard layer EVA for energy dissipation.

+ Bottom and internal soft section (neck side) provides comfort for the

shoulder and neck, hard section on the upper part to give stability and provides force distribution when the helmet is impacting.

+ Easy to use soft strap closure on the front part.

+ Highly compatible with all other protectors and suits.

+ Washable external cover with hook and loop grip rear closure.



BLACK RED
6741018 13



BLACK ANTHRACITE
ORANGE
6741018 148



BLACK ANTHRACITE
BLUE
6741018 177



TECH LAYERS

20 ————— 24



RIDE TECH LONG SLEEVE WINTER TOP

TECHNICAL UNDERGEAR

SIZE: XS/S - M/L - XL/2XL

- + Designed for cold weather riding.
- + Open mesh structure on back for comfort and breathability.
- + Compression fit design to reduce muscle fatigue.
- + Stretch ribs on chest for comfort and an optimized fit.
- + Jacquard logos on shoulders and chest.



BLACK GRAY
4752117 106



RIDE TECH WINTER BOTTOM

TECHNICAL UNDERWEAR

SIZE: XS/S - M/L - XL/2XL

- + Designed for cold weather riding.
- + Open mesh structure on back thigh for comfort and breathability.
- + Compression fit design to reduce muscle fatigue.
- + Stretch ribs on front and back knee for comfort and an optimized fit.
- + Jacquard logos on knee.



BLACK GRAY
4752217 106



RIDE TECH LONG SLEEVE SUMMER TOP

TECHNICAL UNDERWEAR

SIZE: XS - 2XL

- + Designed for warm weather riding.
- + Open mesh structure on back for comfort and breathability.
- + Compression fit design to reduce muscle fatigue.
- + Stretch ribs on chest for comfort and an optimized fit.
- + Jacquard logos on shoulders and chest.



BLACK RED
4752521 13



BLACK RED
4752721 13



RIDE TECH SUMMER BOTTOM

TECHNICAL UNDERWEAR

SIZE: XS - 2XL

- + Designed for warm weather riding.
- + Open mesh structure on back thigh for comfort and breathability.
- + Compression fit design to reduce muscle fatigue.
- + Stretch ribs on front and back knee for comfort and an optimized fit.
- + Jacquard logos on knee.



BLACK RED
4752621 13



KX V2 SUMMER BALACLAVA

TECHNICAL UNDERWEAR

SIZE: OS

- + Designed for warm weather driving and to prevent the build-up of heat and sweat, Alpinestars KX v2 Balaclava Summer keeps drivers cool under their helmet.
- + Polygiene treatment keeps the balaclava fresh in even the hottest of climates.
- + Moisture wicking material prevents sweat from pooling on the body.
- + Engineered pattern for optimal performance.
- + Stretch spandex construction with strategically positioned open mesh inserts for ventilation.
- + Comfortable, moisture-wicking aids all-round temperature control and performance in hot conditions.
- + Flat lock seams for optimized levels of comfort.



BLACK RED
3553122 13



SUMMER SOCKS

TECHNICAL UNDERWEAR

SIZE: S- XL

- + Single layer construction for high levels of breathability and comfort.
- + Moisture wicking construction throughout.
- + Mesh construction for optimized levels of airflow.
- + Rib construction for enhanced stretchability.
- + Length: 9cm.



BLACK
1701120 10



BLACK/ACID YELLOW
1701120 1047



BLACK/BRIGHT RED
1701120 1303



KART RAIN SUIT

WET WEATHER KART RACING

SIZE: 40-60

- + Clear, waterproof oversuit for competition use.
- + Constructed with light, 100% waterproof materials and taped seams to prevent water ingress.
- + Precise fit minimizes flapping at high speeds.
- + Alpinestars asymmetric front opening design.
- + Inner V-shaped gusset enables use during heavy downpours.
- + High profile collar provides a complete seal against the elements.
- + Elasticized cuffs on the wrist and ankles.
- + Heavy duty, textile sleeve panel for resistance against heat from the kart's engine.



CLEAR
3266019 00



CLEAR YOUTH
3266519 00



KART COVER

ACCESSORIES

SIZE: OS

- + Alpinestars' Kart Cover protects your kart from getting covered in dirt or dust while in the paddock and keeps it dry when it rains. The structured shape and elasticated lower edge provides a universal fitment for all classes of kart and keeps it securely in place, whilst still being easy to fit and remove.
- + Water repellent Polyurethane silver lining.
- + Structured fit with elasticated lower edge.
- + Supplied with Alpinestars branded storage bag.

- + Durable 100% Polyester shell.



BLACK
6150123 10



FLOW V3 HELMET BAG

ACCESSORIES

SIZE: OS

- + The Flow V3 Helmet Bag is made from a lightweight polyester shell with a plush fleece lining and accommodates any full-face helmet and HANS device. The bag's rigid base ensures secure placement, while a spacious side compartment offers generous storage for any accessories, or personal items. This bag is also equipped with a Helmet dryer and mesh inserts within the bag to aid in airflow. The Flow V3 includes an internal USB for quick and easy access to a power source.
- + Lightweight and durable polyester shell.
- + Designed to accommodate any full-face helmet and HANS device.
- + Built-in helmet dryer and mesh inserts promote moisture wicking to keep your helmet clean and dry.
- + Internal USB built-in to main compartment for quick and easy access to a power source.
- + Rigid, rubberized bottom base offers secure placement of the helmet, regardless of terrain.
- + Spacious side compartment offers convenient storage for your helmet accessories.
- + Fleece inner lining delivers additional helmet protection.
- + Double grab handles and removable shoulder strap combine to ensure versatile and easy transportation.
- + Parallel zip opening on main compartment for quick and easy access.



BLACK WHITE
6150224 12



PIT RADIO BELT

ACCESSORIES

SIZE: EUR 34-48 / US 2.5-14

- + Advanced poly-fabric mechanic's utility belt for use by pit crews.
- + Stretch insert to ensure adaptable and close fit over overalls.
- + Large clip buckle closure with D-ring adjustment for a secure, personalized fit.
- + Alpinestars embroidered logo on rear.



BLACK
6900118 10

HYPERTECH V3 SUIT

AUTO RACING / SIZE: 44-60



BRIGHT RED BLACK
3350224 9114

WHITE BLACK SILVER
3350224 292



BLACK DARK SHADOW
3350224 1065

GP RACE V2 SUIT

AUTO RACING / SIZE: 44-64



BLACK YELLOW FLUO
3355020 155

BLACK WHITE RED
3355020 123



BLACK WHITE ORANGE FLUO
3354020 1241



ANTHRACITE
WHITE ORANGE
3355020 1424

GP TECH V4 SUIT

AUTO RACING / SIZE: 44-64



WHITE BLACK RED
3354024 213

BLACK WHITE
3354024 12



BLUE NAVY BLACK RED
3354024 7081

ATOM SUIT

AUTO RACING / SIZE: 44-66



ANTHRACITE RED BLACK
3352722 1436

BLACK
3352722 10



BLACK SILVER
3352722 119



SILVER ANTHRACITE YELLOW FLUO
3352722 1950

GP PRO COMP V2 SUIT

AUTO RACING / SIZE: 44-60



RED BLACK
3352022 31

BLACK ASPHALT WHITE
3352022 1128



BLACK ASPHALT ORANGE FLUO
3352022 1204



SILVER BLUE ASPHALT BLACK
3352022 1904



ASPHALT CYAN WHITE
3352022 9172

ATOM SUIT GRAPHIC

AUTO RACING / SIZE: 44-64



BLACK SILVER BLUE
3352523 1972

BLACK ANTHRACITE ORANGE FLUO
3352522 1056

STELLA GP PRO COMP V2 SUIT

WOMEN'S AUTO RACING / SIZE: 38-50



BLACK PURPLE WHITE
3360022 1232

BLACK
TURQUOISE WHITE
3360022 1721

TECH-1 ZX V4 GLOVES

AUTO RACING / SIZE: S-2XL



BLACK ANTHRACITE 3550224 104 BLACK ORANGE FLUO 3550224 156 BLACK RED 3550224 13 BLACK WHITE RED 3550224 123 BLACK BLUE 3550224 17 TAR GRAY BLACK YELLOW FLUO FLUO 3550224 9151

TECH-1 RACE V4 GLOVES

AUTO RACING / SIZE: S-2XL



BLACK TAR GRAY 3552024 1169 BLACK YELLOW FLUO 3552024 155 BLACK BLUE 3552024 17 BLACK ORANGE FLUO 3552024 156 BLACK RED 3552024 13 WHITE RED 3552024 23

TECH-1 START V4 GLOVES

AUTO RACING / SIZE: S-2XL



BLACK 3551524 10 RED 3551524 30 YELLOW FLUO 3551524 55 ROYAL BLUE 3551524 790

ZX EVO V2 LONG SLEEVE TOP

TECH LAYERS / SIZE: XS-2XL



WHITE GRAY 4755020 201 BLACK GRAY 4755020 106 RED DARK RED 4755020 313 YELLOW FLUO DARK YELLOW 4755020 556 WHITE BLUE 4755020 27

ZX EVO V2 BOTTOM

TECH LAYERS / SIZE: XS-2XL



WHITE GRAY 4755520 201 BLACK GRAY 4755520 106

RACE V3 LONG SLEEVE TOP

TECH LAYERS / SIZE: S-2XL



WHITE 4757024 20 BLACK 4757024 10

RACE V3 BOTTOM

TECH LAYERS / SIZE: S-2XL



WHITE 4757124 20 BLACK 4757124 10

ZX EVO V2 BALACLAVA

TECH LAYERS / SIZE: ONE SIZE



WHITE GRAY
4754320 201

BLACK GRAY
4754320 106

RED DARK RED
4754320 313

YELLOW FLUO DARK YELLOW
4754320 556

WHITE BLUE
4754320 27

RACE V3 BALACLAVA

TECH LAYERS / SIZE: ONE SIZE



WHITE
4757224 20

BLACK
4757224 10

ZX V4 SOCKS

TECH LAYERS / SIZE: S-XL



WHITE
4704323 20

BLACK
4704323 10

RACE V4 SOCKS

TECH LAYERS / SIZE: S-XL



WHITE
4704021 20

BLACK
4704021 10

SUPERMONO V2 SHOES

AUTO RACING / SIZE: US 5 - 13 / EU 37 - 47



BLACK YELLOW FLUO WHITE
2716022 158

BLACK GOLD RED
2716022 1593

BLACK WHITE
2716022 12

WHITE BLACK
2716022 21

RED WHITE BLACK
2716022 321

TECH-1 Z V3 SHOES

AUTO RACING / SIZE: US 5 - 13 / EU 37 - 47



WHITE BLACK
2715024 21

DARK SILVER BLACK RED
2715024 1258

BLACK SILVER
2715024 119

BLACK YELLOW FLUO
2715024 155

BLACK RED
2715024 13

YELLOW FLUO BLACK
2715024 551

TECH-1 T V3 SHOES

AUTO RACING / SIZE: US 5 - 13 / EU 37 - 47



BLACK COOL GRAY
YELLOW
2710022 1055

BLACK SILVER
2710022 119

WHITE BLACK
2710022 21

WHITE BLACK RED
2710022 213

RED BLACK WHITE
2710022 312

ORANGE FLUO BLACK
WHITE
2710022 4512

LITE BLUE BLACK WHITE
2710022 7912

SP + SHOES

AUTO RACING / SIZE: US 5 - 13 / EU 37 - 47



BLACK WHITE
2710723 12

BLACK RED
2710723 13

BLACK YELLOW FLUO
2710723 155

ULTRAMARINE BLUE LIGHT
BLUE 2710723 7179

SP V2 SHOES

AUTO RACING / SIZE: US 5 - 13 / EU 37 - 47



BLACK
2710521 10

RADAR SHOES

AUTO RACING - CREW SHOES / SIZE: US 6 - 14 / EU 38 - 48



BLACK WHITE
2719021 12

KMX-5 V3 SUIT

KARTING / SIZE: 40-60



BLACK WHITE ORANGE FLUO
3353024 1241



WHITE BLACK BRIGHT RED
3353024 2030



BLACK DARK SHADOW
3353024 1065

KMX-9 V3 SUIT

KARTING / SIZE: 40-60



BLACK YELLOW FLUO
3356024 155



BLACK RED WHITE
3356024132



BLACK WHITE
3356024 12



BLACK RED FLUO
33560241030

KMX-9 V3 GRAPHIC SUIT

KARTING / SIZE: 40-60



GRAPHIC 3
BLACK YELLOW FLUO
3356424 155



GRAPHIC 2
BLACK CYAN FUCHSIA
3356324 1734



GRAPHIC 5
NAVY RED
3356124 7138



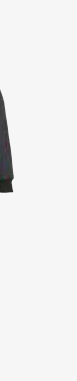
GRAPHIC 2
RED BLACK BRASS
BROWN
3356324 3008



GRAPHIC 5
DARK GRAY BLACK
3356124 9310



GRAPHIC 4 BLACK
CYAN
YELLOW FLUO
3356124 1757



GRAPHIC 3
BLACK RED
3356424 13



KART INDOOR SUIT

INDOOR KARTING / SIZE: XS-3XL



ROYAL BLUE RED
3357019 793



BLACK RED
3357019 13



RED BLACK
3357019 31

TECH-1 KX V4 GLOVES

KARTING / SIZE: S-2XL



BLACK ANTHRACITE
3551824 104



BLACK ORANGE FLUO
3551824 156



BLACK RED
3551824 13



BLACK WHITE RED
3551824 123



BLACK BLUE
3551824 17



TAR GRAY BLACK YELLOW
FLUO FLUO
3551824 9151

KMX-9 V3 S SUIT

YOUTH KARTING / SIZE: SIZE: 120-130-140-150



BLACK YELLOW FLUO
3356524 155



BLACK RED FLUO
3356524 1030

KMX-9 V3 S GRAPHIC 3 SUIT

YOUTH KARTING / SIZE: 120-130-140-150



BLACK RED
3356924 13



BLACK YELLOW FLUO
3356924 155

TECH-1 K V3 GLOVES

KARTING / SIZE: S-2XL



WHITE FUCHSIA BLACK
3551724 295



BLACK WHITE RED
3551724 123



BLACK ANTHRACITE
3551724 104



BLACK ORANGE WHITE
3551724 134



FUCHSIA CYAN WHITE
3553224 3035



YELLOW FLUO BLUE WHITE
3553224 572

TECH-1 K RACE V2 COMPETITION GLOVES

KARTING / SIZE: S-2XL

KMX-9 V3 S GRAPHIC 5 SUIT

YOUTH KARTING / SIZE: 120-130-140-150



NAVY RED
3356624 7138

TECH-1 K RACE V2 GLOVES

KARTING / SIZE: S-2XL



ANTHRACITE LIME
3552023 164



RED BLACK
3552023 31



BLACK TAR GRAY
3552123 1169



RED TANGERINE
3552223 3340



NAVY BLUE CREST
3552223 78



ORANGE FLUO
3553023 440



YELLOW FLUO
3553023 55

TECH-1 K RACE S V2 GLOVES

YOUTH KARTING / SIZE: S-2XL



RED TANGERINE
3552923 3340

NAVY BLUE CREST
3552923 78

BLACK TAR GRAY
3552623 1169

ANTHRACITE LIME
3552723 164

RED BLACK
3552723 31

TEMPEST V2 WP GLOVES

WET WEATHER KARTING / SIZE: S-XL



BLACK FLUO GREEN
3552321 167

TEMPEST V2 S WP GLOVES

YOUTH WET WEATHER KARTING / SIZE: S-XL



BLACK FLUO GREEN
3542321 167

ENGINE GLOVES

MECHANICS / SIZE: S-2XL



BLACK GRAY
3552519 106

BLACK YELLOW FLUO
3552519 155

TECH-1 KZ V2 SHOES

KARTING / SIZE: US 2.5 - 14 / EU 34 - 48



BLACK WHITE GOLD
2713023 1059

BLACK YELLOW FLUO
2713023 155

BLACK ORANGE FLUO
2713023 156

BLACK ENAMEL BLUE YELLOW
FLUO
2713023 1795

BLACK ORANGE FLUO CAMO
2713023 1429

TECH-1 KX V3 SHOES

KARTING / SIZE: US 5 - 13 / EU 37 - 47



BLACK WHITE
2710723 12

TECH-1 KX V2 SHOES

KARTING / SIZE: US 2.5 - 13 / EU 34 - 47



BLACK DARK GRAY GREEN
FLUO
2712123 1116

BLACK WHITE RED
2712123 123

BLACK WHITE YELLOW FLUO
2712123 125

WHITE ORANGE FLUO BLACK
2712123 2041

RED BLACK WHITE
2712123 312

ULTRAMARINE BLUE RED
FLUO YELLOW
2712123 7135

TECH-1 K V2 SHOES

KARTING / SIZE: EUR 34-47 / US 2.5-13



BLUE BLACK WHITE
2712022 712

RED BLACK WHITE
2712022 312

WHITE BLACK RED
2712022 213

BLACK WHITE YELLOW FLUO
2712022 125

BLACK WHITE
2712022 12

BLACK ORANGE FLUO WHITE
2712022 1142

TECH-1 K START V2 SHOES

KARTING / SIZE: US 2.5 - 14 / EU 34 - 48



WHITE BLACK YELLOW FLUO
2711521 215

ASPHALT BLACK
ORANGE FLUO
2711521 9140

BLACK WHITE LITE BLUE
2711521 1278

BLACK WHITE
2711521 12

BLACK WHITE RED
2711521 123

TECH-1 K S SHOES

YOUTH KARTING / SIZE: US 12,5 - 1 / EU 30 - 32



BLACK WHITE RED
2712518 123

BLACK WHITE
ORANGE FLUO
2712518 1241

BLACK WHITE
YELLOW FLUO
2712518 125

META ROAD SHOES

SIZE US: 4.5-13.5 / EUR: 37.5-49



RED WHITE
2654520 32

BLUE WHITE
2654520 72

BLACK DARK GRAY
2654520 111

BLACK WHITE GREEN
2654520 163

META TRAIL SHOES

SIZE US: 4.5-13.5 / EUR: 37.5-49



RED WHITE
2654820 32

BLACK ORANGE
2654820 14

BLACK DARK GRAY
2654820 111

AK-1 KART BODY PROTECTOR

PROTECTIONS / SIZE: 2XS/XS - S/M - L/XL (YOUTH: S/M - L/XL)



BLACK WHITE RED 6531024 123
YOUTH 6541024 123

BIONIC RIB SUPPORT

PROTECTIONS / SIZE: S-L | XL-3XL (YOUTH: OS)



BLACK YELLOW FLUO 6537013 155
YOUTH 6547013 155

BLACK RED 6537013 13
YOUTH 6547013 13

YOUTH NECK SUPPORT

YOUTH PROTECTION / SIZE: OS



BLACK YELLOW FLUO
6540118 155

BLACK ORANGE
6540118 14

BLACK WHITE
654 0118 12

SEQUENCE YOUTH NECK ROLL

YOUTH PROTECTION / SIZE: S - XL



BLACK RED
6741018 13

BLACK ANTHRACITE ORANGE
6741018 148

BLACK ANTHRACITE BLUE
6741018 177

RIDE TECH LONG SLEEVE WINTER TOP

TECH LAYERS / SIZE: XS/S - M/L - XL/2XL



BLACK GRAY
4752117 106

RIDE TECH WINTER BOTTOM

TECH LAYERS / SIZE: XS/S - M/L - XL/2XL



BLACK GRAY
4752217 106

KART RAIN SUIT

WET WEATHER KARTING / SIZE: 40-60



CLEAR
3266019 00

KART RAIN YOUTH SUIT

YOUTH WET WEATHER KARTING / SIZE: 120-150



CLEAR
3266519 00

RIDE TECH LONG SLEEVE SUMMER TOP

TECHNICAL UNDERGEAR / SIZE: XS - 2XL



BLACK RED
4752521 13

BLACK RED
4752721 13

RIDE TECH SUMMER BOTTOM

TECHNICAL UNDERGEAR / SIZE: XS - 2XL



BLACK RED
4752621 13

KART COVER

ACCESSORIES / SIZE: OS



BLACK
6150123 10

FLOW V3 HELMET BAG

ACCESSORIES / SIZE: OS



BLACK WHITE
6150224 12

KX V2 SUMMER BALACLAVA

TECH LAYERS / SIZE: OS



BLACK RED
3553122 13

SUMMER SOCKS

TECH LAYERS / SIZE: S- XL



BLACK
1701120 10



BLACK/ACID YELLOW
1701120 1047



BLACK/BRIGHT RED
1701120 1303

PIT RADIO BELT

ACCESSORIES / SIZE: OS



BLACK
6900118 10



MEN'S APPAREL SIZE CHART

EURO SIZE	40	42	44	46	48	50	52	54	56	58	60	62	64	66	68	
INT. SIZE	XXS		XS		S		M		L		XL		XXL		3XL	
U.S. SIZE	30	32	34	36	38	40	42	44	46	48	50	52	54	56	58	
U.S. PANT SIZE	24	26	28	30	32	34	36	38	40	42	44	46	48	50	52	

A. CHEST CM	78-82	82-86	86-90	90-94	94-98	98-102	102-106	106-110	110-114	114-118	118-122	122-126	126-130	130-134	134-138
B. WAIST CM	64-68	68-72	72-76	76-80	80-84	84-88	88-92	92-96	96-100	100-104	104-108	108-112	112-116	116-120	120-124
C. HIP CM	79-83	83-87	87-91	91-95	95-99	99-103	103-107	107-111	111-115	115-119	119-123	123-127	127-131	131-136	136-140
D. THIGH CM	48-49	50-51	52-53	54-55	56-57	58-59	60-61	62-63	64-65	66-67	68-69	70-71	72-73	74-75	76-77
E. INSEAM CM	71-72	73-74	75-76	77-78	79-80	81-82	83-84	85-86	87-88	89-90	89-90	91-92	91-92	91-92	91-92
F. OUTER ARM CM	49-50	51-52	53-54	55-56	57-58	59-60	61-62	63-64	65-66	67-68	67-68	69-70	69-70	69-70	69-70
G. HEIGHT CM	150-156	157-163	164-167	168-171	172-175	176-179	180-183	184-187	188-191	192-195	192-195	196-199	196-199	196-199	196-199

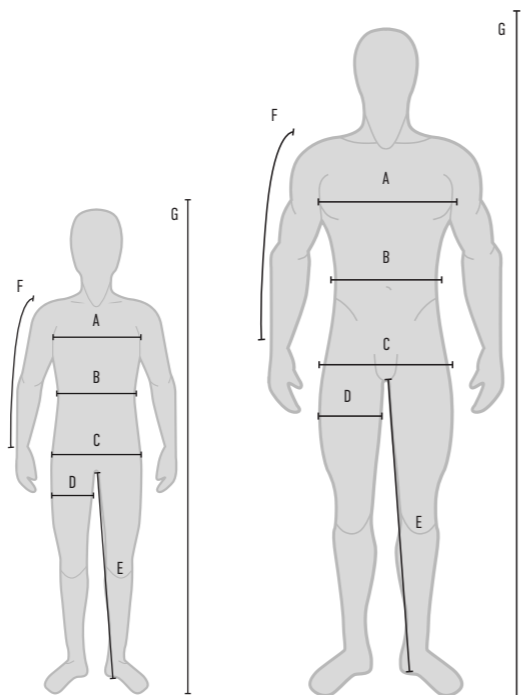
A. CHEST IN	30 ½ - 32 ½	32 ½ - 33	33 - 35	35 - 37	37 - 38	38 - 40	40 - 41 ½	41 ½ - 43 ½	43 ½ - 44	44 - 46 ½	46 ½ - 48	48 - 49	49 - 51	51 - 53	53 - 54
B. WAIST IN	25 ½ - 26 ½	26 ½ - 28	28 - 29	29 - 31 ½	31 ½ - 33	33 - 34	34 - 36 ½	36 ½ - 37 ½	37 ½ - 39 ½	39 ½ - 41	41 - 42 ½	42 ½ - 44	44 - 45	45 - 47 ½	47 ½ - 49
C. HIP IN	31 - 32	32 - 34 ½	34 ½ - 35	35 - 37	37 - 39	39 - 40 ½	40 ½ - 42	42 - 43 ½	43 ½ - 45 ½	45 ½ - 46	46 - 48	48 - 50	50 - 51	51 - 54	54 - 55 ½
D. THIGH IN	19 - 19	19 - 20	20 ½ - 20	21 ½ - 21	22 - 22 ½	22 - 23 ½	23 - 24	24 - 24 ½	25 ½ - 25	26 - 26	26 ½ - 27	27 ½ - 28	28 - 28 ½	29 ½ - 29	30 ½ - 30 ½
E. INSEAM IN	28 - 28 ½	28 ½ - 29	29 ½ - 29	30 - 30 ½	31 - 31 ½	31 - 32 ½	32 - 33	33 ½ - 33	34 ½ - 34	35 - 35	35 - 35	35 - 36 ½	35 - 36 ½	35 - 36 ½	35 - 36 ½
F. OUTER ARM IN	19 ½ - 20	20 - 20 ½	20 - 21 ½	21 - 22	22 ½ - 22	23 ½ - 23	24 - 24	24 ½ - 25 ½	25 - 26	26 - 26 ½	26 - 26 ½	27 - 27 ½	27 - 27 ½	27 - 27 ½	27 - 27 ½
G. HEIGHT IN	4'11" - 5'1"	5'2" - 5'4"	5'4" - 5'5"	5'6" - 5'7"	5'7" - 5'8"	5'9" - 5'10"	5'11" - 6'	6' - 6'2"	6'2" - 6'3"	6'3" - 6'5"	6'3" - 6'5"	6'5" - 6'6"	6'5" - 6'6"	6'5" - 6'6"	6'5" - 6'6"

YOUTH'S APPAREL SIZE CHART

SIZE	120	130	140	150
U.S. SIZE	22	24	26	28
INT. SIZE	S	M	L	XL
YEARS	6	7-8	9-10	11-12

A. CHEST CM	60.5 - 65.5	65.5 - 70.5	70.5 - 75.5	75.5 - 80.5
B. WAIST CM	54 - 58	58 - 62	62 - 66	66 - 70
C. HIP CM	68 - 72	72 - 76	76 - 80	80 - 84
D. THIGH CM	40 - 42	42 - 44	44 - 46	46 - 48
E. INSEAM CM	51.1 - 56.5	56.5 - 61.5	61.5 - 66.5	66.5 - 71.5
F. ARM LENGTH CM	40 - 44	44 - 48	48 - 52	52 - 56
G. HEIGHT CM	120 - 130	130 - 140	140 - 150	150 - 160

A. CHEST IN	23 - 25 ½	25 ½ - 27 ½	27 ½ - 29 ½	29 ½ - 31 ½
B. WAIST IN	21 ½ - 22	22 - 24	24 - 26	26 - 27 ½
C. HIP IN	26 ½ - 28	28 - 29	29 - 31 ½	31 ½ - 33
D. THIGH IN	15 ½ - 16 ½	16 ½ - 17	17 - 18	18 - 18
E. INSEAM IN	20 - 22 ½	22 ½ - 24 ½	24 ½ - 26	26 - 28
F. ARM LENGTH IN	15 6/8 - 16	16 - 18	18 - 20 ½	20 ½ - 22
G. HEIGHT IN	47 ½ - 51	51 - 55	55 - 59	59 - 63



HOW TO MEASURE

A. Chest - Measure around the fullest part, under the armpits, keeping the tape horizontal.

B. Waist - Measure around the natural waist line, inline with the navel, keeping the tape horizontal.

C. Hip - Measure around the fullest part of your hips, about 20cm below waist line, keeping the tape horizontal.

D. Thigh - Measure around the thigh just below the crotch, keeping the tape horizontal.

E. Inseam - Stand against a wall, ask someone else to measure from the crotch to the bottom of your leg.

F. Arm Length - Measure from shoulder (Humerus) to wrist.

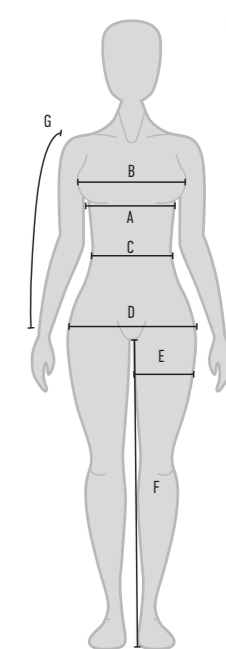
G. Height - Stand against a wall, ask someone else to measure from the floor to the top of your head, keeping the tape vertical.

WOMEN'S APPAREL SIZE CHART

EURO SIZE	36	38	40	42	44	46	48	50	52	54
INT. SIZE	XXS		XS		S		M		L	
U.S. SIZE	0	2	4	6	8	10	12	14	16	18
U.S. PANT SIZE	22	24	26	28	30	32	34	36	38	40

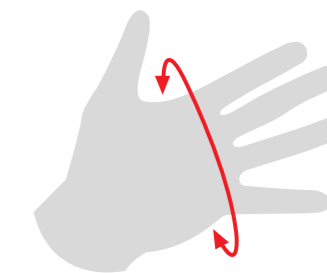
A. CHEST CM	74-78	78-82	82-86	86-90	90-94	94-98	98-102	102-106	106-110	110-114
B. BUST CM	78-82	82-86	86-90	90-94	94-98	98-102	102-106	106-110	110-114	114-118
C. WAIST CM	58-62	62-66	66-70	70-74	74-78	78-82	82-86	86-90	90-94	94-98
D. HIP CM	82-86	86-90	90-94	94-98	98-102	102-106	106-110	110-114	114-118	118-122
E. THIGH CM	50-51	52-53	54-55	56-57	58-59	60-61	62-63	64-65	66-67	68-69
F. INNER LEG CM	72-73	74-75	76-77	78-79	80-81	82-83	84-85	84-85	86-87	86-87
F. OUTER ARM CM	50-51	52-53	54-55	56-57	58-59	60-61	62-63	62-63	64-65	64-65
H. HEIGHT CM	157-160	161-164	165-168	169-172	173-176	177-180	181-184	181-184	185-188	185-188

A. CHEST IN	29 - 30 ½	30 ½ - 32 ½	32 ½ - 33	33 - 35	35 - 37	37 - 38	38 - 40	40 - 41 ½	41 ½ - 43 ½	43 ½ - 44
B. BUST IN	30 ½ - 32 ½	32 ½ - 33	33 - 35	35 - 37	37 - 38	38 - 40	40 - 41 ½	41 ½ - 43 ½	43 ½ - 44	44 - 46 ½
C. WAIST IN	22 - 24	24 - 26	26 - 27 ½	27 ½ - 29	29 - 30 ½	30 ½ - 32 ½	32 ½ - 33	33 - 35	35 - 37	37 - 38
D. HIP IN	32 ½ - 33	33 - 35	35 - 37	37 - 38	38 - 40	40 - 41 ½	41 ½ - 43 ½	43 ½ - 44	44 - 46 ½	46 ½ - 48
E. THIGH IN	19 - 20	20 ½ - 20	21 ½ - 21	22 - 22 ½	22 - 23 ½	23 - 24	24 - 24 ½	25 ½ - 25	26 - 26	26 - 27
F. INNER LEG IN	28 - 28 ½	29 - 29 ½	29 - 30	30 ½ - 31	31 ½ - 31	32 ½ - 32	33 - 33 ½	33 - 33 ½	33 - 34 ½	33 - 34 ½
G. OUTER ARM IN	19 - 20	20 ½ - 20	21 ½ - 21	22 - 22 ½	22 - 23 ½	23 - 24	24 - 24 ½	24 - 24 ½	25 ½ - 25	25 ½ - 25
H. HEIGHT IN	5'2" - 5'3"	5'4" - 5'5"	5'5" - 5'6"	5'7" - 5'8"	5'8" - 5'9"	5'10" - 5'11"	5'11" - 6'	5'11" - 6'	6'1" - 6'2"	6'1" - 6'2"



GLOVE' SIZE CHART

INTERNATIONAL SIZE	XS	S	M	L	XL	XXL	3XL
MEN'S HAND MEASUREMENT CM		17.8 - 20.3	20.3 - 21.6	21.6 - 22.9	22.9 - 24.1	24.1 - 25.4	25.4 - 27.9
WOMEN'S HAND MEASUREMENT CM	16.5 - 17.8	17.8 - 19	19 - 20.3	20.3 - 21.6	21.6 - 22.9		
YOUTH'S HAND MEASUREMENT CM		15.6 - 16.7	16.8 - 17.5	17.6 - 18.3	18.4 - 19.1		
MEN'S HAND MEASUREMENT IN		7 ½ - 8	8 - 8 ½	8 ½ - 9	9 - 9 ½	9 ½ - 10	10 - 11
WOMEN'S HAND MEASUREMENT IN	6 ½ - 7	7 - 7 ½	7 ½ - 8	8 - 8 ½	8 ½ - 9		
YOUTH'S HAND MEASUREMENT IN		6 ½ - 6 ¾	6 ¾ - 7	7 - 7 ¼	7 ¼ - 7 ½		



HOW TO MEASURE HAND CIRCUMFERENCE WITHOUT THUMB

FOOTWEAR SIZE CHART

U.S. SIZE	2.5	3	3.5	4	4.5	5	6	6.5	7	7.5	8	8.5	9	9.5	10	10.5	11	11.5	12	12.5	13	13.5	14	14.5	15
EUR SIZE	34	34.5	35	35.5	36	37	34	38.5	39	40	40.5	41	42	42.5	43	43.5	44	45	45.5	46	47	47.5	48	49	49.5
JPN SIZE	20.5	21	21.5	22	22.5	23	24	24.5	25	25.5	25.5	26	26.5	27	27.5	28	28.5	29.5	29.5	30	30.5	31	31.5	32	32.5

KIDS' FOOTWEAR SIZE CHART

U.S. SIZE	12.5	13.5	1	2
EUR SIZE	30	31	32	33

ALPINESTARS USA

2780 W. 237TH STREET
TORRANCE, CALIFORNIA
90505
PHONE +1 310 891 0222
FAX +1 310 891 0299
ALPINESTARS.USA@ALPINESTARS.COM

ALPINESTARS EUROPE

5 VIALE FERMI,
ASOLO (TV) 31011 ITALY
PHONE +39 0423 5286
FAX +39 0423 529 571
ALPINESTARS@ALPINESTARS.COM

