



VR EVO CONTROL MODULE Removal and Installation Instructions

GENERAL SAFETY PRECAUTIONS

WARNING

IMPACT AND MOVING PARTS ENTANGLEMENT HAZARD

Failure to observe these instructions could lead to severe injury or death

- **Always** take time to fully read the Instructions and/or Operations Guide, and/or Basic Guide to Winching Techniques, in order to understand your winch and its operations.
- **Never** lean over battery while making connections.
- **Never** route electrical cables:
 - o Across any sharp edges.
 - o Through or near moving parts.
 - o Near parts that become hot.
- **Always** insulate and protect all exposed wiring and electrical terminals.
- **Always** install terminal boots as directed in installation instructions.
- **Always** tighten all nuts and bolts securely, per the installation instructions.
- **Always** perform regular inspections and maintenance on the plow mechanism, fasteners, cable and related hardware.
- **Always** replace all worn or damaged parts before operating.
- **Never** operate this WARN product with damaged or missing parts.

Read installation and operating instructions thoroughly.

NOTICE

EQUIPMENT DAMAGE

- **Always** refer to the Installation and Specification Guide, supplied in the winch kit, for all wiring schematics and specific details on how to wire this WARN product to your vehicle.

Read installation and operating instructions thoroughly.

TOOLS REQUIRED

- 4mm Allen Wrench
- 13 mm Wrench
- Phillips Head Screwdriver

TORQUE SPECIFICATIONS

Please use the recommended torque specifications when assembling this product unless otherwise specified in the instructions.

FASTENER SIZE	FASTENER TORQUE		FASTENER SIZE	FASTENER TORQUE	
	lb-ft	(N.m)			
			M4	(2)	3
1/4"	8	(11)	M5	(4.5)	6
5/16"	17	(23)	M6	(7.5)	10
3/8"	30	(40)	M8	(18)	25
7/16"	48	(66)	M10	(37)	50
1/2"	74	(100)			
9/16"	106	(144)			
5/8"	148	(200)			
3/4"	269	(364)			

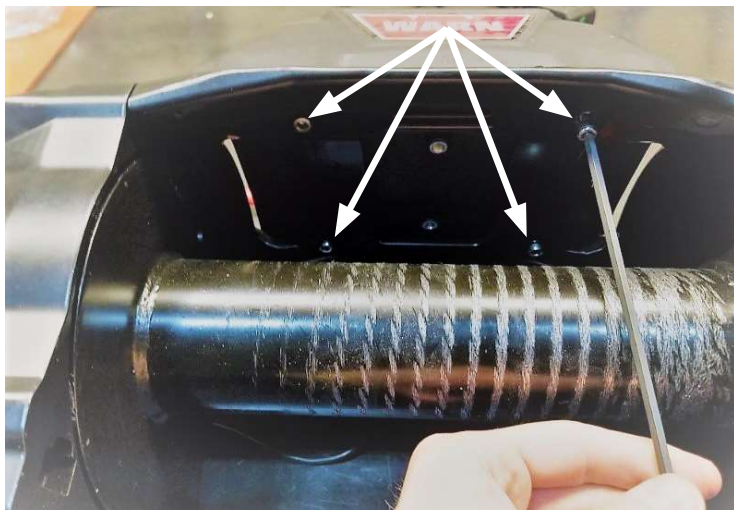
REMOVAL INSTRUCTIONS

1. Disconnect battery cables. *All work with electrical wires and cables must be completed with the battery completely disconnected from the vehicle wiring.*
2. Remove winch from vehicle and place on flat stable surface.

REMOVING CONTROL PACK FROM WINCH

NOTE: Retain all original hardware for reinstall.

1. Using an Allen wrench, remove the four control pack cap screws.

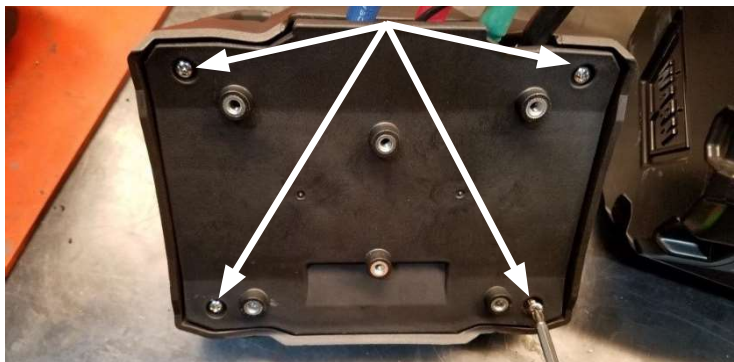


2. Remove control pack from tie plate.

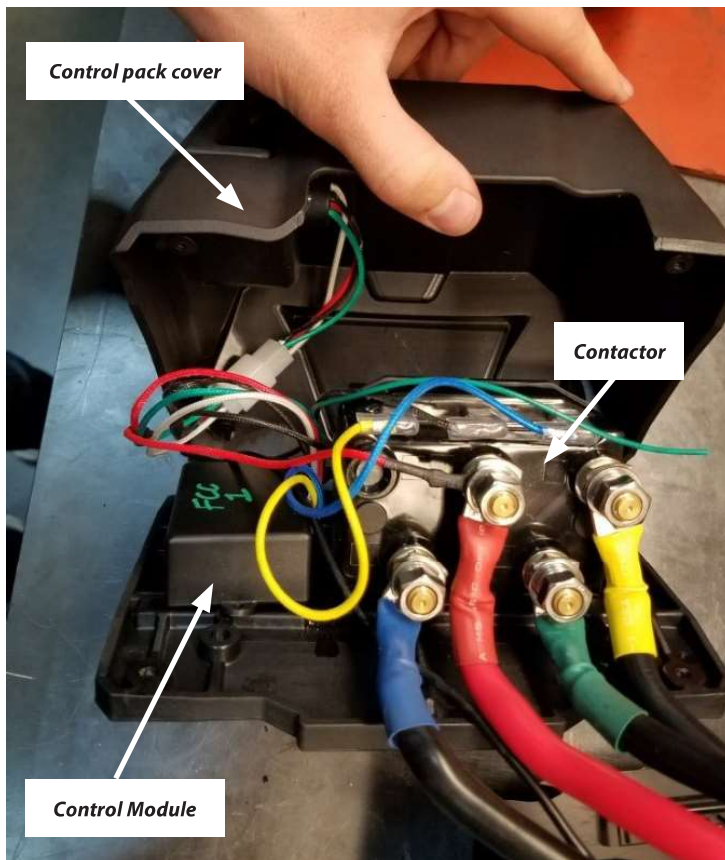


REMOVING CONTROL PACK COVER FROM BASE PLATE

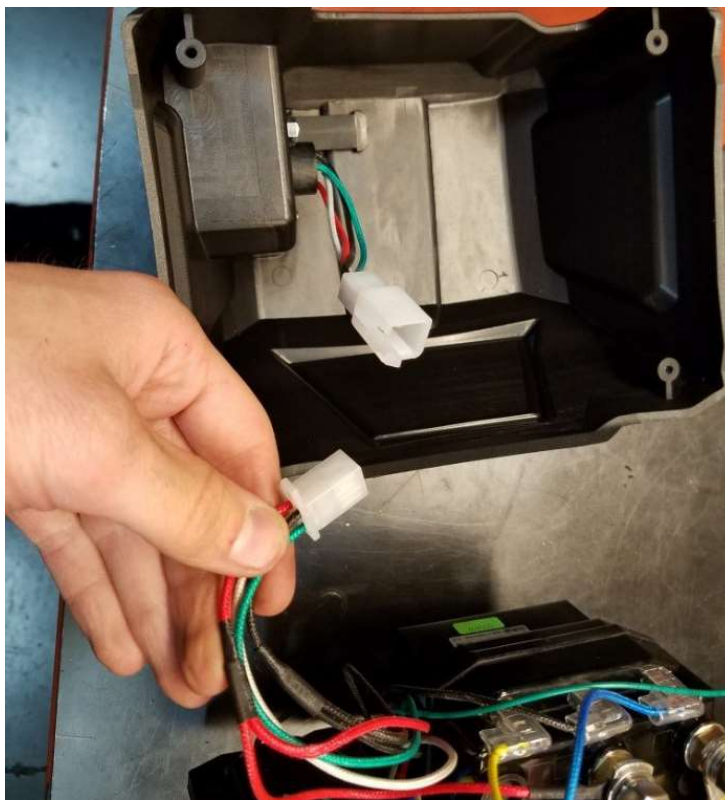
1. Using a Phillips screwdriver, remove the four screws securing the base plate to the control pack cover.



2. Pull control pack cover away from base plate to expose internals.

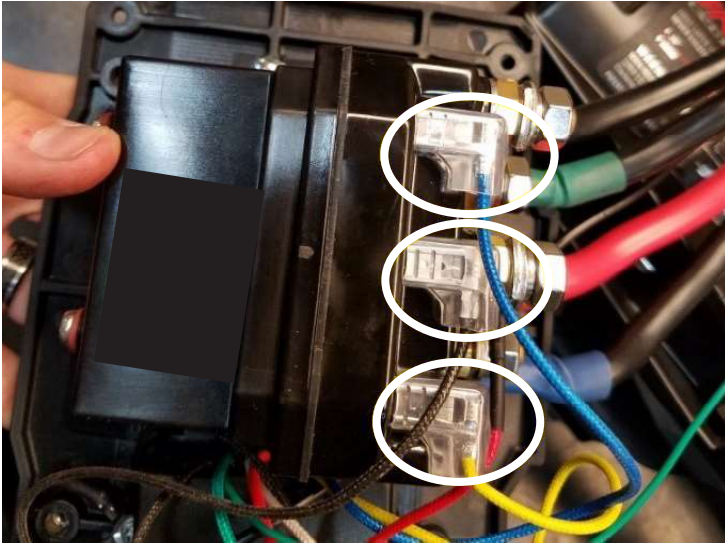


3. Disconnect harness from remote socket and set cover aside.

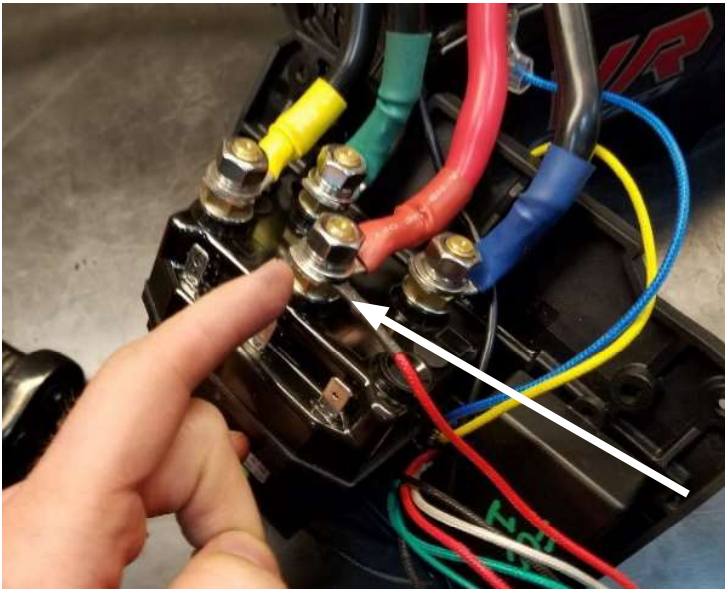


REMOVING CONTROL MODULE FROM CONTROL PACK

1. Remove the blue, black and yellow spade connectors from the spade terminals on the contactor.



2. Remove the nut, lockwasher and washer from the positive (+) post on the contactor to remove the red power wire and the red winch power cable.



3. Remove the screw and the three black ground wires mounted next to the control module.



You may now remove your control module completely and install new control module.

INSTALLATION INSTRUCTIONS

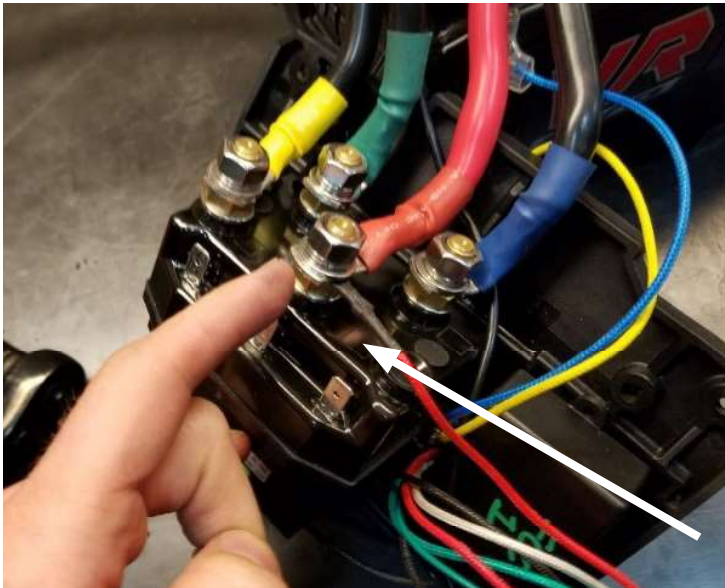
1. Verify battery cables are disconnected.

INSTALL CONTROL MODULE TO CONTROL PACK

1. Locate new control module.
2. Thread original mounting screw through the three black ground wire ring terminals.
3. Fasten screw to base plate.



4. Install the red power wire and the red winch power cable to the positive (+) post on the contactor. Secure with nut, lockwasher and washer.

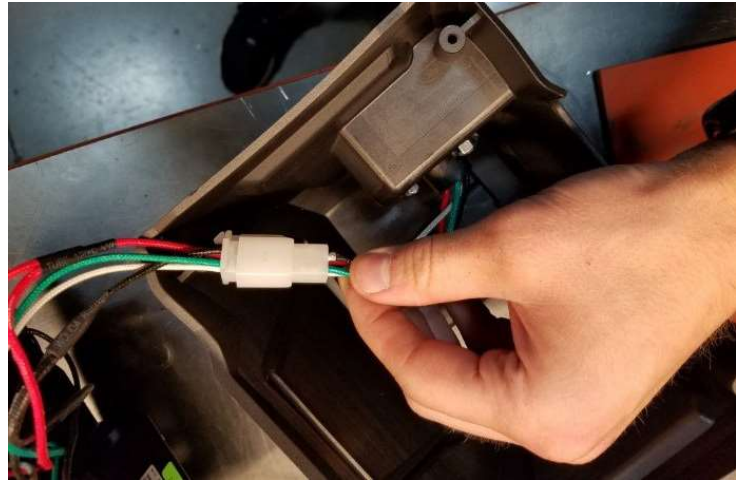


3. Plug the blue, black and yellow spade connectors to the coordinating spade terminals on the contactor.

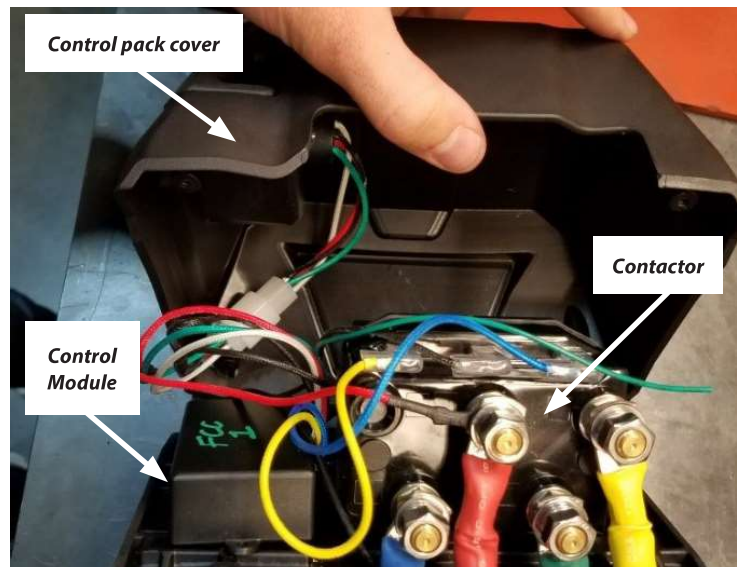


INSTALL CONTROL PACK TO BASE PLATE

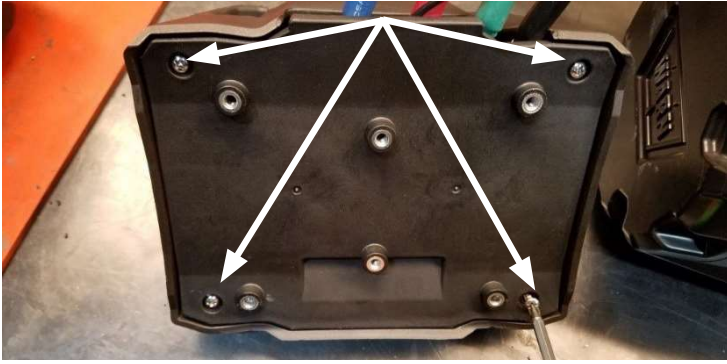
1. Connect harness plug to remote socket.



2. Place control pack cover over base plate (covering internals).



3. From under base plate, reinstall the four screws to secure the base plate to the control pack cover.

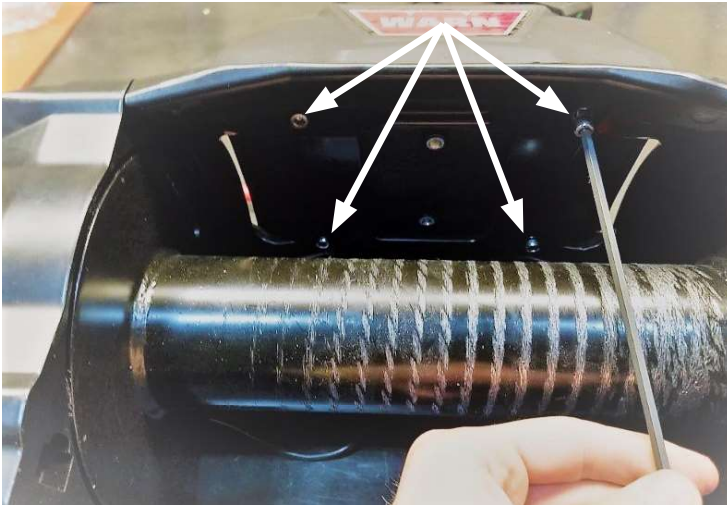


INSTALL CONTROL PACK TO WINCH

1. Place control pack over tie plate (lining up mounting holes).



2. Using an Allen wrench, reinstall the four control pack cap screws to secure control pack to winch tie plate.



3. Mount winch to vehicle per manufacturer's instructions.
4. Reinstall battery connections.

⚠ WARNING Always connect red (+) power cable ONLY to the positive (+) terminal of the battery.

⚠ WARNING Always connect black ground (-) power cable ONLY to the negative (-) terminal of the battery.