



UPFITTER



INSTALLATION GUIDE

SNK01

VRS Snorkel to suit LDV T60



UPFITTER

24-26 Wedgewood Road, Hallam, Vic 3803

Telephone: (03) 8781 0700 Fax: (03) 8781 0799

E-mail: sales@atecoequipment.com.au

Proprietor: Ateco Automotive Pty Ltd ABN 34 000 486 706



UPFITTER



WARNING:

Do not use this product for any vehicle, make or model other than those specified by the manufacturer.
Do not remove the plaque or label from the Snorkel.
Do not modify the structure of the Snorkel in any way.

The Snorkel has been produced to provide continued functionality of "driver assist" features as closely as possible to Original Equipment, however, road conditions and the combination of other accessories fitted to the vehicle may effect functionality and cannot be anticipated.

The driver remains responsible at all times for properly controlling the vehicle, monitoring all "driver assist" features and intervening where required to ensure the vehicle is safely operated.

IMPORTANT INFORMATION:

Before installing the Snorkel:

Check that all components, as listed in the assembly table, are available.
Thoroughly read all instructions.

It is the installers responsibility to ensure all holes are drilled in the correct location. The template supplied is a guide only and all holes must be checked for location before drilling.

These instructions are accurate as at the revision date and do not take into account any changes made by the vehicle manufacturer to vehicle design after the revision date, or other accessories that are or have been fitted to the vehicle.

During installation:

It is the responsibility of the installer to confirm correct operation/clearance of all components.

All holes drilled shall have all burrs and swarf removed then coated with a suitable rust preventative paint.

These safety products should, at a minimum, be used when fitting or working on the product.



Protective Glasses



Hearing Protection



UPFITTER



PLEASE READ ALL INSTRUCTIONS AND ENSURE THAT ALL IS UNDERSTOOD PRIOR TO FITMENT AND ALL PARTS LISTED ARE PRESENT.

PLEASE ENSURE THESE INSTRUCTIONS ARE GIVEN TO THE CUSTOMER UPON COMPLETION.

Torque Settings

Bolt Diameter (mm.)	Torque (Nm)	Torque (ft.lb)
M6	9	7
M8	22	16
M10	44	32
M12	77	57

Tools required

- Metric sockets & spanners
- Phillips and flat head screwdrivers
- 2" masking tape
- Drill
- Step drill to 14mm
- 7mm drill bit
- Centre punch
- Automotive sensor safe sealant
- Air hacksaw or similar
- Thread lock
- Metric allen key set
- Felt marker



UPFITTER



Components

1x	Snorkel Body
1x	Ram Head
1x	Stainless steel logo
2x	Rubber ducts
1x	Powder coated A pillar mount
3x	Plastic screw plugs
3x	Stainless steel screws
6x	M8 studs
6x	M8 large washers
6x	M8 nylock nuts
1x	Black hose clamp
4x	Stainless steel hose clamps
2x	M4 cap head bolts
1x	80mm joiner
1x	82mm joiner
1x	Template
2x	M6 stainless bolts



UPFITTER



Fitting Procedure

1. Locate the vehicle in a clear area.
Check snorkel is correct for vehicle model.
Remove right front wheel arch liner



2. Remove inner air intake duct



3. Apply masking tape to top of guard and A pillar



4. Remove air box





UPFITTER



Fitting Procedure

5. Cover air entry into motor to ensure no foreign material can enter the engine intake.



6. Place template onto guard ensuring top edge is located on top edge of guard with bonnet open.



7. Mark holes as indicated by template using a felt tipped pen.

Remove template.



8. Use snorkel body to check holes are in the correct location, if necessary adjust hole location.

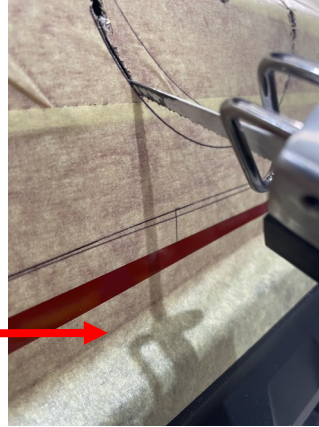




Fitting Procedure

9. Drill pilot hole for each of the marked holes. Using air hacksaw or similar, cut out large air entry hole in guard.

Note: If vehicle is fitted with flares, place tape over top edge to prevent swarf from getting behind flare.



10. Using step drill, drill mounting holes on guard to 14mm



11. Install 3x upper M8 mounting studs into snorkel body using thread locking to secure studs into position



12. Temporarily mount A pillar mounting bracket to snorkel using supplied M6 hardware.





UPFITTER



Fitting Procedure

13. Place snorkel into position and mark location of A pillar mount bracket.



14. Remove snorkel from vehicle.
Remove A pillar mounting bracket from snorkel and use bracket to mark 3 mounting holes in A pillar.



15. Drill 3x A pillar mounting holes to 7mm.
Ensure only the outer skin is drilled.
Remove masking tape.
For all holes, remove all burrs and swarf then paint with a suitable rust preventative paint.
Clean all drilling or cutting swarf from the vehicle.



16. Apply automotive sealant to the holes then install 3x square plastic screw plugs into A pillar holes.
Mount A pillar mount to the pillar using 3x stainless steel screws.





UPFITTER



Fitting Procedure

17. Install snorkel to vehicle using 3x M8 nylock nuts with large washers to upper studs (do not tighten).

Install lower studs to snorkel using thread locker to secure stud. Install 3x M8 nylock nuts with large washers to lower studs (do not tighten).



18. Mount snorkel body to A pillar bracket using 2x M6 stainless steel bolts.

Tighten all mounting bolts.



19. Install top ram head using black hose clamp to secure.



20. Install 90 deg rubber bend through hole on inner guard. Insert 80mm round metal duct into rubber ducts.





Fitting Procedure

21. Instal 45 deg rubber hose onto steel duct and connect to snorkel body (short end to snorkel body).

Use hose clamps to secure all joins.

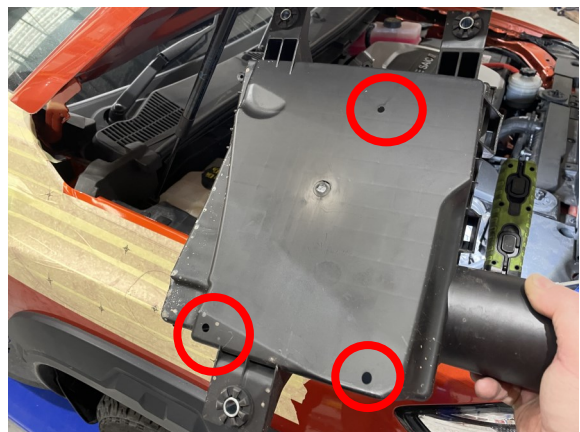


22. Re-install airbox base connecting to rubber snorkel duct using stainless steel hose clamp.



21. The factory air cleaner has drain holes in the base to allow water out of the airbox. These may also allow water to enter the intake. You can seal these holes to prevent this but the airbox must be visually checked after any exposure to water and rain.

Check with customer before sealing for their preferred option.



22. Re-install air filter, airbox lid and connections.



UPFITTER



Fitting Procedure

24. Check all snorkel connections and mounts are tight and secured.

Note: Its is the installers responsibility to ensure all connections are sealed and secured.

Re-install wheel arch liner.

25. Install VRS badge to snorkel body using 2x M4 stainless steel button head bolts.

