

Of the Father's Love Begotten - #214

D maj.

AURELIUS C. PRUDENTIUS, 4th Cent.
TR. JOHN M. NEAL and HENRY W. BAKER

PLAINSONG, 13TH CENTURY
Arranged by Thomas Grassi

Moderately

D/F# Em/G F#m/A Gmaj7 Asus Dsus D

mp

D/A Gmaj7 A G2/B G/B A/C# A

3

1. Of the Fa - ther's love be - got - ten, Ere the worlds be - gan to be,
2. O ye heights of heav'n a - dore Him; An - gel hosts, His prais - es sing;
3. Christ, to Thee with God Fa - ther, And, O Ho - ly Ghost, to Thee,

D(no3)

6

He is Al - pha and O - me - ga, He the Source, the End - ing He,
Pow'rs, do - min - ions, bow be - fore Him, And ex - tol our God and King;
Hymn and chant and high thanks - giv - ing And un - wea - ried prais - es be:

Em G D F# D G Asus A Bm G Em(4) A7sus D

8

Of the things that are, that have been, And that fu - ture years shall see,
 Let no tongue on earth be si - lent, Ev - 'ry voice in con - cert ring,
 Hon - or, glo - ry, and do - min - ion, And e - ter - nal vic - to - ry,

Bm F#m Gmaj7 D G2 Asus A D2 Em7 Em7 A
 A F# D C#

mf

10

Ev - er - more and ev - er - more!
 Ev - er - more and ev - er - more!
 Ev - er - more and ev - er - more!

D Em D Gmaj7 Asus
 F# G A

1., 2.

Dsus D

12

3.

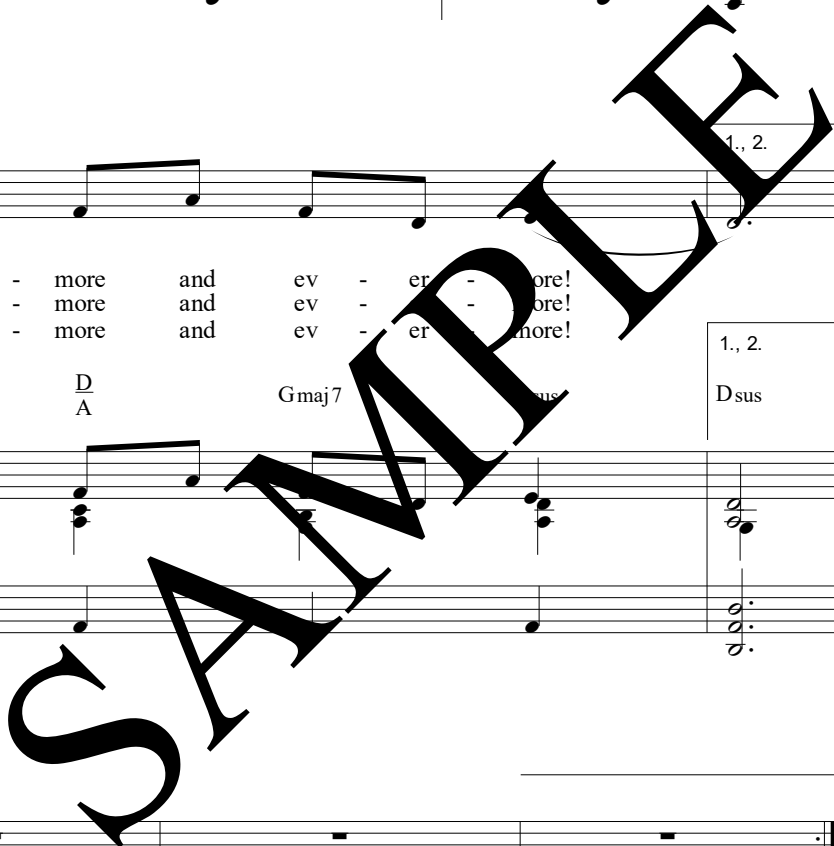
D Gmaj7 A G2 A A C#
 A B C#

3.

Dsus D

mp

14



Of the Father's Love Begotten - #214

D maj.

AURELIUS C. PRUDENTIUS, 4th Cent.
TR. JOHN M. NEAL and HENRY W. BAKER

PLAINSONG, 13TH CENTURY
Arranged by Thomas Grassi

Moderately

D/F# Em/G F#m/A Gmaj7 Asus Dsus D



D/A Gmaj7 A G2/B G/B A/C# A



D(no3)



1. Of the Fa - ther's love be - got - ten, Ere the world be - gan to be,
2. O ye heights of heav'n a - dore Him; An - gel hosts, His prais - es sing;
3. Christ, to Thee with God the Fa - ther, And O Ho - ly Ghost, to Thee,

Em G D F# D G Asus A Em G Em(4) A7sus D



He is Al - pha and O - me - He the Source, the End - ing He,
Pow'rs, do - min - ions, bow be - fore Him, And ex - tol our God and King;
Hymn and chant and high - giv - ing And un - wea - ried prais - es be:

Bm F#m A Gmaj7 G2 Asus A D2 F# Em7 Em7 A#



Of the things that are that have been, And that fu - ture years shall see,
Let no tongue on earth be si - lent, Ev - 'ry voice in con - cert ring,
Hon - or, glo - ry, and do - min - ion, And e - ter - nal vic - to - ry,

D F# Em G D Gmaj7 Asus Dsus D



Ev - er - more and ev - er - more!
Ev - er - more and ev - er - more!
Ev - er - more and ev - er - more!

D A Gmaj7 A G2 B A C# Dsus D



Of the Father's Love Begotten - #214

E♭ maj.

AURELIUS C. PRUDENTIUS, 4th Cent.
TR. JOHN M. NEAL and HENRY W. BAKER

PLAINSONG, 13TH CENTURY
Arranged by Thomas Grassi

Moderately

E♭/G Fm/Ab Gm/B♭ A♭maj7 B♭sus E♭sus E♭

mp

E♭/B♭ A♭maj7 B♭ A♭2/C A♭/C B♭/D B♭

3

1. Of the Fa - ther's love be - got ten, Ere the worlds be - gan to be,
2. O ye heights of heav'n a - dore Him; An - gel hosts, His prais - es sing;
3. Christ, to Thee with God Fa - ther, And, O Ho - ly Ghost, to Thee,

E♭(no3)

He is Al - pha and O - me - ga, He the Source, the End - ing He,
Pow'rs, do - min - ions, bow be - fore Him, And ex - tol our God and King;
Hymn and chant and high thanks - giv - ing And un - wea - ried prais - es be:

Fm Ab E♭ G E♭ Ab B♭sus B♭ C m A♭ Fm(4) B♭7sus E♭

8

Musical staff with treble clef and key signature of two flats (Bb, Eb). The melody consists of eighth and quarter notes.

Of the things that are, that have been, And that fu - ture years shall see,
Let no tongue on earth be si - lent, Ev - 'ry voice in con - cert ring,
Hon - or, glo - ry, and do - min - ion, And e - ter - nal vic - to - ry,

Cm Gm/Bb Abmaj7 Eb/G Ab2 Bbsus Bb Eb/G Fm7 Fm7/Eb Bb/D

Piano accompaniment for measures 10-11. Includes treble and bass staves with chords and a dynamic marking of *mf*.

10

Musical staff with treble clef and key signature of two flats. The melody continues with eighth and quarter notes.

Ev - er - more and ev - er - more!
Ev - er - more and ev - er - more!
Ev - er - more and ev - er - more!

Eb/G Fm/Ab Eb/Bb Abmaj7 Bbsus

1., 2.

Ebsus Eb

Piano accompaniment for measures 12-13. Includes treble and bass staves with chords and a dynamic marking of *mp*.

12

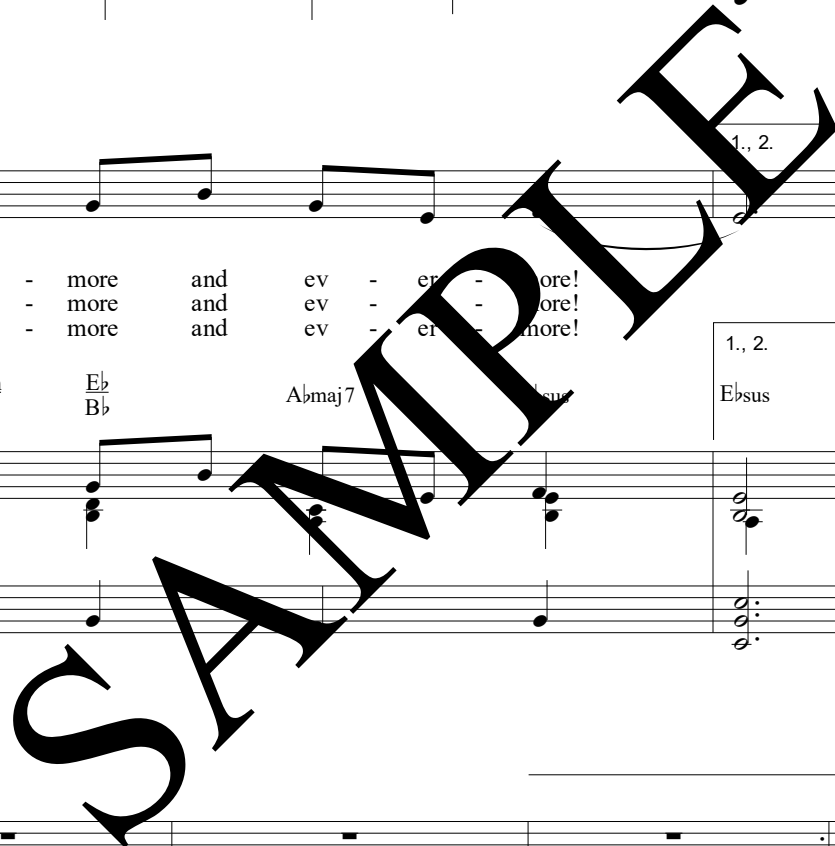
Musical staff with treble clef and key signature of two flats. The melody continues with eighth and quarter notes.

3.

Eb/Bb Abmaj7 Bb Ab2/C Bb/D 3. Ebsus Eb

Piano accompaniment for measures 14-15. Includes treble and bass staves with chords and a dynamic marking of *mp*.

14



Of the Father's Love Begotten - #214

E♭ maj.

AURELIUS C. PRUDENTIUS, 4th Cent.
TR. JOHN M. NEAL and HENRY W. BAKER

PLAINSONG, 13TH CENTURY
Arranged by Thomas Grassi

Moderately

E♭/G Fm/A♭ Gm/B♭ A♭maj7 B♭sus E♭sus E♭

E♭/B♭ A♭maj7 B♭ A♭2/C A♭/C B♭/D B♭

E♭(no3)

3

6

1. Of the Fa - ther's love be - got - ten, Ere the world - gan to be,
2. O ye heights of heav'n a - dore Him; An - gel hosts, His prais - es sing;
3. Christ, to Thee with God the Fa - ther, and, O H - ly Ghost, to Thee,

Fm A♭ E♭ G E♭ A♭ B♭sus B♭ Cm A♭ Fm(4) B♭7sus E♭

8

He is Al - pha and O - me - ga, He the Source, the End - ing He,
Pow'rs, do - min - ions, bow be - fore Him, And ex - tol our God and King;
Hymn and chant and high thanks - giv - ing, And un - wea - ried prais - es be:

Cm Gm/B♭ A♭maj7 E♭/B♭ E♭/B♭ B♭sus B♭ E♭2/G Fm7 Fm7/E♭ B♭/D

10

Of the things that are, that have been, And that fu - ture years shall see,
Let no tongue on earth be si - lent, Ev - 'ry voice in con - cert ring,
Hon - or, glo - ry, and do - min - ion, And e - ter - nal vic - to - ry,

E♭/G Fm A♭ E♭/B♭ A♭maj7 B♭sus B♭ 1., 2. E♭sus E♭

12

Ev - er - more and ev - er - more!
Ev - er - more and ev - er - more!
Ev - er - more and ev - er - more!

E♭/B♭ A♭maj7 B♭ A♭2/C B♭/D 3. E♭sus E♭

14