

Grace Greater Than Our Sin - #78

JULIA H. JOHNSTON

DANIEL B. TOWNER

Arr. by Tom Jennings

Transcription by Jordan Davis

♩ = 150

G G C/G G

mf

Am C G/B Am G/B Am C G/D D G C2/G

5

1. Mar - vel - ous grace of our lov - ing Lord,
2. Sin and de - spair that the sea - waves cold,
3. Dark is the stain that we can - not hide;
4. Mar - vel - ous, in - fi - nite match - less grace,

G D C/E D G D7 G

10

Grace that ex - ceeds our sin and our guilt,
Threat - en the soul with in - fi - nite loss;
What can a - vail to wash it a - way?
Free - ly be - stowed on all who be - lieve;

D D7 G Am/G G

14

Yon - der on Cal - va - ry's mount out - poured,
 Grace that is great - er, yes, grace un - told,
 Look, there is flow - ing a crim - son tide;
 You that are long - ing to see His face,

G D C E D F# G D#7 Em

18

There where the blood of the Lamb was spilt,
 Points to er the than re - fuge, you the may His might be - lieve?
 Will you than this snow mo - ment His grace re - ceive?

Am C G B Am G B Am C D7 G

22

Grace, grace, God's grace,

G G Am G

26

Grace that will par - don and cleanse with - in;

D D7 Bm D D7 G C G G

30

Grace, grace, God's grace,

G G C/G G

34

Grace that is great - er than all our sin.

1, 2, 3.

Am C G/B Am G/B Am C G D D7 G

38

all our sin. Grace that is great - er than all our sin.

4. rit.

4. G D D#7 E7 2 Am Am C G/B Am G/B Am C G D D7 G

43

Grace Greater Than Our Sin - #78

JULIA H. JOHNSTON

DANIEL B. TOWNER

Arr. by Tom Jennings

Transcription by Jordan Davis

♩ = 150

G

G

$\frac{C}{G}$

G



$\frac{Am}{C}$

$\frac{G}{B}$

Am

$\frac{G}{B}$

Am

$\frac{G}{D}$

D

G

$\frac{C2}{G}$



5

G

D

$\frac{C}{E}$

$\frac{D}{F\#}$

G

D7

G



10
 1. Mar - vel - ous grace of our in - ing waves Lord,
 2. Sin and de - spair like the sea - waves cold,
 3. Dark is the stain that we can - not hide;
 4. Mar - vel - ous, in - fi - nite match - less grace,

D

D7

G

$\frac{Am}{G}$

G



14
 Grace that ex - ceeds our sin and our guilt,
 Threat - en the soul with in - fi - nite loss;
 What can a - be - to wash it a - way?
 Free - ly be - tower on all who be - lieve;

G

D

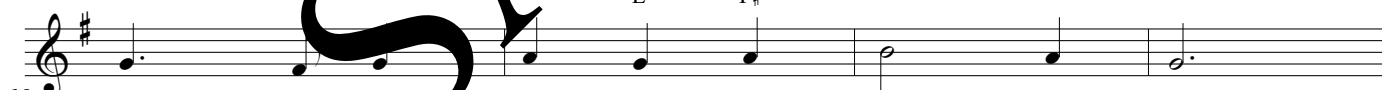
$\frac{C}{E}$

$\frac{D}{F\#}$

G

$D\#7$

Em



18
 You - der that our Cal - va - ry's mount out - poured,
 Grace that is great - er, yes, grace un - told,
 Look, there is flow - ing a crim - son tide;
 You that are long - ing to see His face,

$\frac{Am}{C}$

$\frac{G}{B}$

Am

$\frac{G}{B}$

Am

$\frac{G}{D}$

D7

G



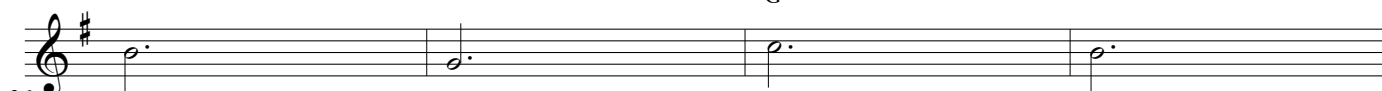
22
 There where the blood of the Lamb was spilt.
 Points to the the re - fuge, the the might - y cross.
 Whit - er than snow you may His be to - day.
 Will you this mo - ment His grace re - ceive?

G

G

$\frac{Am}{G}$

G



26
 Grace, grace, God's grace,

30

D D7 $\frac{Bm}{D}$ D7 G $\frac{C}{G}$ G

Grace that will par - don and cleanse with - in;

Detailed description: This block contains the first line of music, measures 30 through 33. The key signature is one sharp (F#). The melody consists of quarter notes: G4 (measure 30), A4 (measure 31), B4 (measure 32), and G4 (measure 33). Chords are indicated above the staff: D (30), D7 (31), Bm/D (32), D7 (33), G (34), C/G (35), and G (36).

34

G G $\frac{C}{G}$ G

Grace, grace, God's grace,

Detailed description: This block contains the second line of music, measures 34 through 37. The melody consists of quarter notes: G4 (measure 34), G4 (measure 35), C5 (measure 36), and G4 (measure 37). Chords are indicated above the staff: G (34), G (35), C/G (36), and G (37).

38

$\frac{Am}{C}$ $\frac{G}{B}$ Am $\frac{G}{B}$ $\frac{Am}{C}$ $\frac{G}{D}$ D7 $\frac{C2}{G}$

1, 2, 3.

Grace that is great - er than all our sin.

Detailed description: This block contains the third line of music, measures 38 through 42. The melody consists of quarter notes: G4 (38), A4 (39), B4 (40), G4 (41), and G4 (42). Chords are indicated above the staff: Am/C (38), G/B (39), Am (40), G/B (41), Am/C (42), G/D (43), D7 (44), and C2/G (45). A first ending bracket labeled '1, 2, 3.' covers measures 43-45.

43

4. $\frac{G}{D}$ D#7 Em2 $\frac{Em}{D}$ $\frac{Am}{C}$ $\frac{Am}{B}$ $\frac{Am}{C}$ $\frac{G}{D}$ rit. D7 G

all our sin. Grace that is great - er than all our sin.

Detailed description: This block contains the fourth line of music, measures 43 through 47. The melody consists of quarter notes: G4 (43), A4 (44), B4 (45), G4 (46), and G4 (47). Chords are indicated above the staff: G/D (43), D#7 (44), Em2 (45), Em/D (46), Am/C (47), Am/B (48), Am/C (49), G/D (50), rit. (51), D7 (52), and G (53). A fourth ending bracket labeled '4.' covers measures 43-45.

SAMPLE