

# Gaze on the Christ - #268

CHRIS ANDERSON

GREG HABEGGER  
Arr. by Thomas Grassi

Contemplative, worshipful (♩ = c. 73)  
N.C.

mp

Pedal harmonically

mp

1. Be - hold the  
2. Be - hold the  
3. Be - hold the

Dm C2 E Fsus F E Bb C sus

cresc. mf

5

Lamb, the spot - less Lamb, Who takes a - way our sin; The debt we  
Lamb, the bleed - ing Lamb, Who takes a - way the veil; His bod - y  
Lamb, the dy - ing Lamb, Who takes a - way just wrath; God saw the

C2 E F2 A Bb2 A Gm Bb C sus C

mp

9

faced was not e - rased, But paid in full by Him. Gaze on the  
torn, His soul for - lorn, Christ cut to God a trail.  
blood of His be - loved And o - ver us has passed.

$\frac{C2}{E}$   $\frac{F2}{A}$  B $\flat$ 2  $\frac{F6}{A}$  Gm7 Csus F  $\frac{F}{A}$

13

*f*  
Christ, our sac - ri - fice Op - al - ta - r made of wood. Ex - alt the

B $\flat$ 2 Gm9 C2  $\frac{F}{A}$  B Gm9 Csus C  $\frac{F6}{A}$

17

Lamb, the wor - thy Lamb, Who bought us with His

$\frac{C2}{E}$   $\frac{F2}{A}$  B $\flat$ 2  $\frac{F}{A}$  Gm7 Csus

21

1., 2.

*mp*

blood.

2. Be - hold the  
3. Be - hold the

1., 2.

F2

Am7

Bb2

Csus

*mp*

24

3.

*rit.*

*f*

*a tempo*

blood.

4. Be-hold the Lamb, the ris - en

3.

F2

C  
E

Dsus

C  
D

Cmaj7  
D

Dsus

Am

D

*f*

*a tempo*

27

Lamb, Who takes a - way death's sting; All knees shall

C  
D

Am  
D

Em

Dm  
F

C  
D

32

bend, all praise as - cend To Christ, the liv - ing King. Gaze on the

Am D C D Am D G G/B

35

*ff* Christ, our sac - ri - fice On al - tar - made wood. Ex - alt the

C2 Am9 D2 G/B C Am7 Dsus D G6/B

*ff*

39

Lamb, the wor - thy Lamb, Who bought us with His blood. Ex - alt the

D2/F# G2/B C2 G/B Am7 Dsus G

43

Lamb, the wor - thy Lamb, Who bought us with His blood.

$\frac{D2}{F\#}$   $\frac{G2}{B}$  C2  $\frac{G}{B}$  Am7 Dsus G2

47

*decresc.* *rit.*

*decresc.* *rit.*

*Red.* \*

SAMPLE

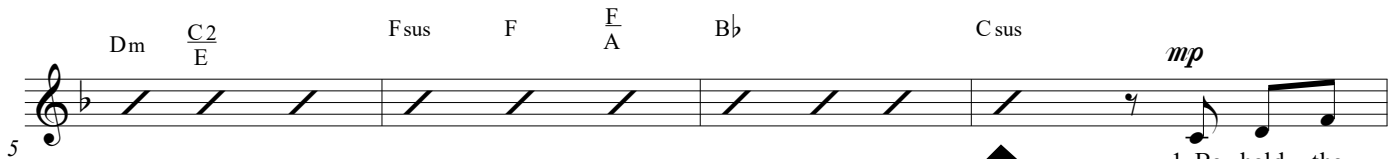
# Gaze on the Christ - #268

CHRIS ANDERSON

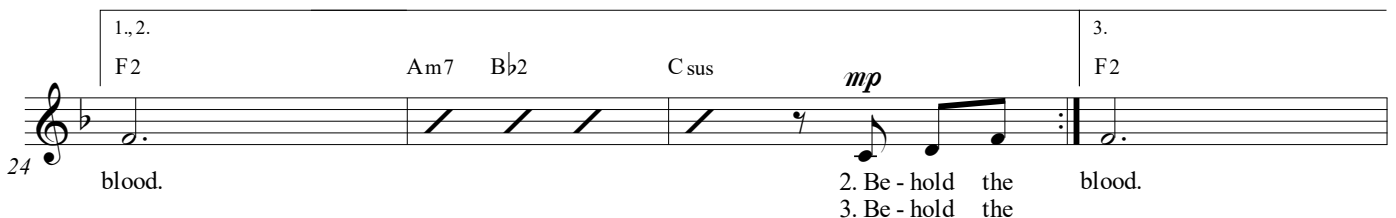
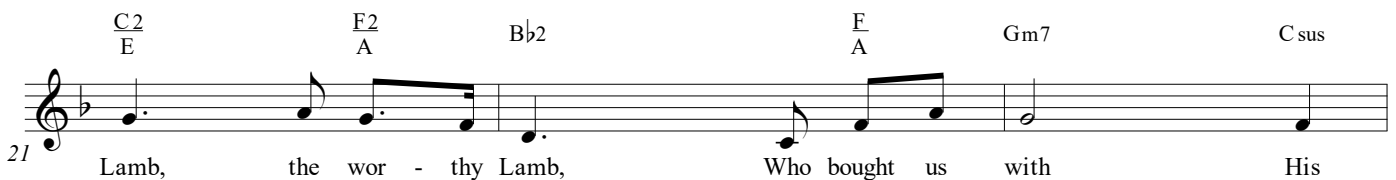
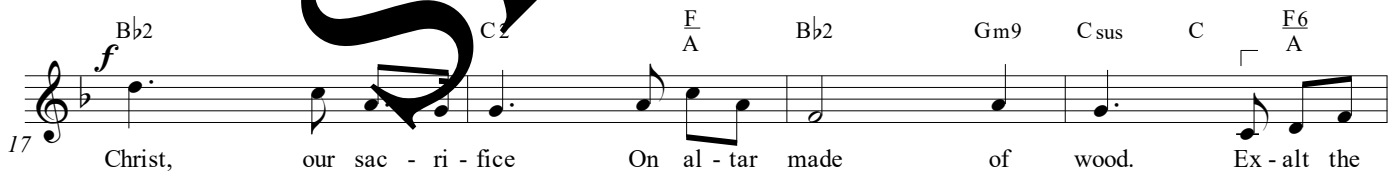
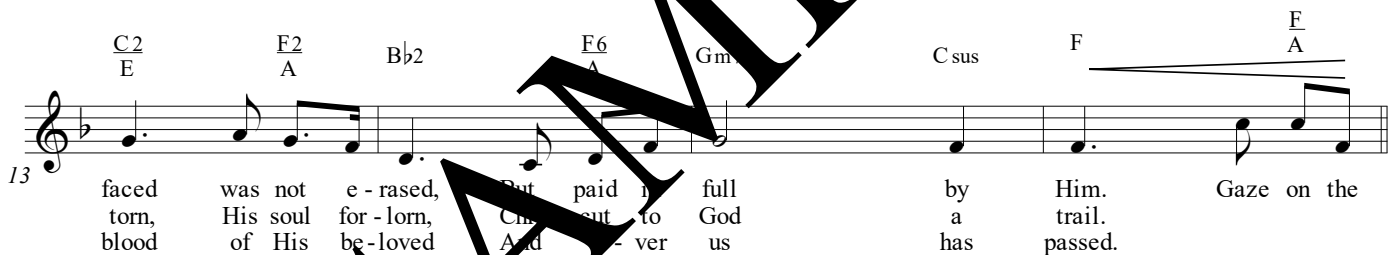
GREG HABEGGER  
Arr. by Thomas Grassi

Contemplative, worshipful (♩ = c. 73)

N.C.



1. Be - hold the  
2. Be - hold the  
3. Be - hold the



28  $\frac{C}{E}$   $D_{sus}$   $\frac{C}{D}$   $\frac{C_{maj7}}{D}$   $D_{sus}$  *rit.* *f*  
 4. Be - hold the

31 *a tempo*  $\frac{Am}{D}$   $\frac{C}{D}$   $\frac{Am}{D}$   $Em$   $\frac{Dm}{F}$   $\frac{C}{D}$   
 Lamb, the ris - en Lamb, Who takes a - way death's sting; All knees shall

35  $\frac{Am}{D}$   $\frac{C}{D}$   $\frac{Am}{D}$   $\frac{C}{D}$   $G$   $\frac{G}{B}$   
 bend, all praise as - cend To Christ, the liv - ing King. Gaze on the

39 *ff*  $C2$   $Am9$   $D2$   $B$   $C$   $Am7$   $D_{sus}$   $D$   $\frac{G6}{B}$   
 Christ, our sac - ri - fice On al - tar made of wood. Ex - alt the

43  $\frac{D2}{F\#}$   $\frac{G2}{B}$   $C2$   $\frac{G}{B}$   $Am7$   $D_{sus}$   $G$   
 Lamb, the wor - thy Lamb, Who bought us with His blood. Ex - alt the

47  $\frac{D2}{F\#}$   $\frac{G2}{B}$   $C2$  *decres.*  $\frac{G}{B}$   $Am7$  *rit.*  $D_{sus}$   $G2$   
 Lamb, the wor - thy Lamb, Who bought us with His blood.