

Beloved and Blessed - #153

STUART TOWNEND

Arr. by Thomas Grassi

mf

Uplifting (♩ = c.108)

1. Be-

lov - ed and Bless - ed, the Fath - er's pure de-light Re-deem - er, Sus -

tain - er, You're my pas - sion and my prize. 2. My Broth - er, my Com-fort-er, My

5 10

The image shows a musical score for the hymn 'Beloved and Blessed'. It is arranged for voice and piano. The score is in 4/4 time and consists of two systems. The first system includes a vocal line starting with '1. Be-' and a piano accompaniment. The second system includes a vocal line with lyrics 'lov - ed and Bless - ed, the Fath - er's pure de-light Re-deem - er, Sus -' and a piano accompaniment. The third system includes a vocal line with lyrics 'tain - er, You're my pas - sion and my prize. 2. My Broth - er, my Com-fort-er, My' and a piano accompaniment. Chords are indicated above the piano parts, and a tempo marking 'Uplifting (♩ = c.108)' is present. A large 'SAMPLE' watermark is overlaid on the score.

Shep-herd and my Friend. My Ran-som, my Right-ous-ness, You're the Stream that nev - er ends.

15

Chords: F2, G, C2, C, F/G, C2, G, C2/E, F2, G

You're un-chang - ing, You're mag - ni - fi-cent, I could desire. You're my

20

Chords: C, G2/B, Am/G, D/F#, G, C/E, F2, Gsus/G, C2, C, G2/B

Breath of life, Sun of right-ous-ness, You're the Love that sat - is-fies. 3. There's kind - ness, com -

25

Chords: Am/G, D/F#, G, G2/F, C/E, F2, C/E, Gsus/G, C2

pas - sion for those who will draw near; Ac - cept - ance, for - give - ness, And a

G C/E F2 G C2 F/G C2 G C2/E

30

love that con - quers fear. You're un - chang - ing, You're mag - ni - ficent, You are all I could de - sire.

F2 G C G2/B Am D/F# G G2/F C/E F2 GsusG

35

You're my Breath of life, Sun of right - eous - ness, You're the Love that sat - is - fies. You're the

C2 C G2/B Am Am/G D/F# G G2/F C/E F2 C/E Gsus G G2

40



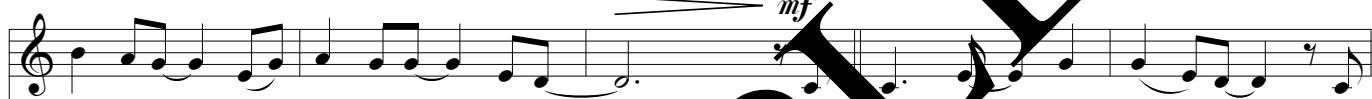
Word of life, You're the Bread of heav'n, You're the Li-on and the Lamb. All with - in me cries, "Lord be

Am Am D G G2 C F2 GsusG C2 C G2 Am Am D

G F E F B F#

f

45



glo - ri - fied by ev - 'ry - thing I am." There's kind - ness, com - pas - sion for

G G2 C F2 C Gsus G C2 G C2 E

F F E E E

mf

50



those who will draw near; Ac - cept-ance, for-give - ness, And a love that con - quers fear.

F2 G C2 F G C2 G C2 E F2 Gsus F C2

E G E G

rit.

55

Beloved and Blessed - #153

STUART TOWNEND

Arr. by Thomas Grassi

Uplifting (♩ = c.108)

Dm7 Fmaj9 Gsus G Dm7 Fmaj9 Gsus G

mf



1. Be -

5 C2 G C2/E F2 G C2 E/G
 lov - ed and Bless - ed, the Fath - er's pure de - light Re -

9 C2 G C2/E F2 G C2 C E/G
 deem - er, Sus - tain - er, You're my pas - sion and my prize. 2. My

13 C2 G C2/E F2 G C2 C E/G
 Broth - er, my Com - fort - er, My Shep - herd and my Friend. My

17 C2 C2/E F2 G C G2/B
 Ran - som, my Right - eous - ness, You're the Stream that nev - er ends. You're un -

21 Am Am/G D/F# G G2/F C/E F2 Gsus G C2 C G2/B
 chang - ing, You're mag - ni - fi - cent, You are all I could de - sire. You're my

25 Am Am/G D/F# G G2/F C/E F2 C/E Gsus G *mf*
 Breath of life, Sun of right - eous - ness, You're the Love that sat - is - fies. 3. There's

29 C2 G C/E F2 G C2 E/G
kind - ness, com - pas - sion for those who will draw near; Ac -

33 C2 G C2/E F2 G C f G2/B
cept - ance, for - give - ness, And a love that con - quers fear. You're un -

37 Am Am/G D/F# G G2/F C/E F2 Gsus G C2 C G2/B
chang - ing, You're mag - ni - fi - cent, You are all I could re - sure You're my

41 Am Am/G D/F# G G2/F C/E F2 Gsus G f G2
Breath of life, Sun of right - eous-ness, You're the love that sat - is - fies. You're the

45 Am Am/G D/F# G G2/F C/E F2 Gsus G C2 C G2/B
Word of life, You're the Bread of life, You're the Li - on and the Lamb. All with -

49 Am Am/G D/F# G G2/F C/E F2 C/E Gsus G mf
in me cries, "Lord be glo - ri - fied by ev - 'ry - thing I am." There's

53 C2 G C2/E F2 G C2 E/G
kind - ness, com - pas - sion for those who will draw near; Ac -

57 C2 G C2/E F2 rit. Gsus E/G C2
cept - ance, for - give - ness, And a love that con - quers fear.