

# SAWYER® 1-2-3 TAP FILTER INSTRUCTIONS



**TO FULLY CLEAN THE TAP FILTER** you need more pressure going backwards through the filter than you had going forwards. Therefore, we do not recommend using the filter at full force of your faucet. Slowly turn on the tap until you feel like the filter is about to pop off, then turn down the pressure so you can backwash with greater pressure.

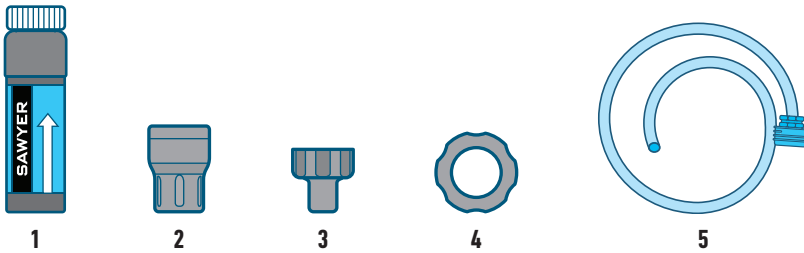
TRANSLATION:

## ADDITIONAL INFORMATION

- Fits on most taps 17mm to 20mm (11/16" - 3/4") in diameter. Will fit all hose bibs (garden hose spigot). Will fit some but not most faucet aerators.
- Do not freeze your filter. The filter is safe from freezing temperatures if it has never been used. However after the fibers are wet there is no definitive way to tell if a filter has been damaged due to freezing. Sawyer recommends replacing your filter if you suspect that it has been frozen.
- Do not use water that exceeds 135F/57C (water is too hot if you can not put your hand in it).
- When backwashing the Tap Filter you need to discard the first quart (liter) of water going forwards through the filter immediately after backwashing. This will flush out contaminants that may be in the filter.
- Using the filter with a garden hose could cause a residual rubber taste. We recommend using food grade hoses.
- Do not store in direct sunlight

TRANSLATION:

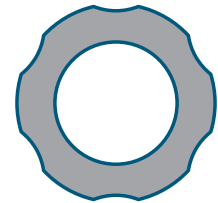
## VERIFY KIT CONTENTS



1. Tap Filter with Cap\* 2. Backwash Adapter 3. Threaded Spigot Adapter 4. Tap Gauge 5. Extension Hose  
\*The filter comes with a flat white cap that helps keep the filter from dripping. It's important to keep this cap clean. Clean this cap before placing it back on the threads of the Tap Filter.

TRANSLATION:

## TAP GAUGE



The Tap Filter fits on most taps 17mm to 20mm (11/16" - 3/4") in diameter. Use the included Tap Gauge to see if your tap is compatible. If you can slide the ring over your tap, the filter will work.

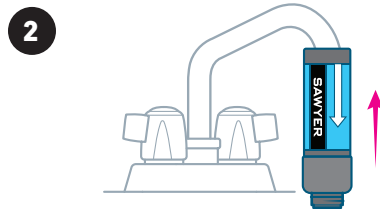
TRANSLATION:

## USING THE FILTER ON A SMOOTH TAP



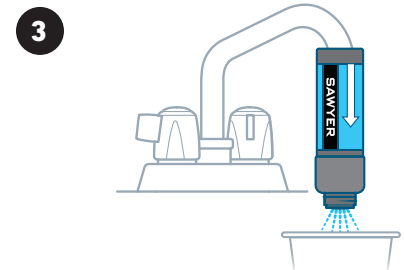
Use the included Tap Gauge(4) to see if your tap is compatible. If you can slide the ring over your tap, the filter will work.

TRANSLATION:



Push the Tap Filter (1) over the end of the tap.

TRANSLATION:

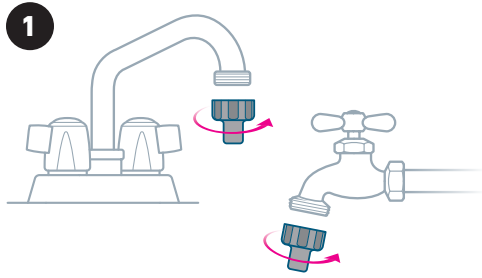


Slowly turn the water on until you feel like the filter wants to pop off, then reduce the water pressure. Then, filter water into a clean container.

TRANSLATION:

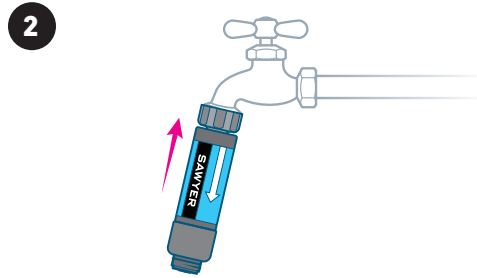
## USING THE FILTER ON A THREADED TAP, SPIGOT, OR "HOSE BIB"

**ALWAYS USE THE SPIGOT ADAPTER ON THREADED TAPS OR SPIGOTS.** Forcing the filter over threaded spigots or taps will permanently damage the rubber.



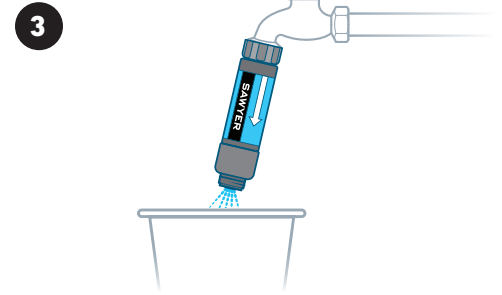
Attach the Threaded Spigot Adapter (3) to your tap or hose bib.

TRANSLATION:



Push the Tap Filter (1) onto the smooth side of the Threaded Spigot Adapter (3).

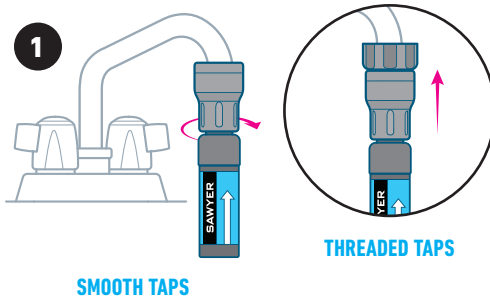
TRANSLATION:



Slowly turn the water on until you feel like the filter wants to pop off, then reduce the water pressure. Then, filter water into a clean container.

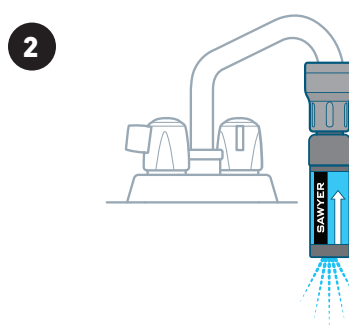
TRANSLATION:

## CLEANING THE FILTER



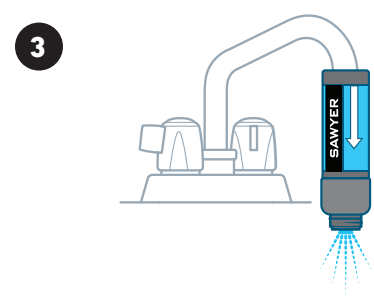
For smooth taps, screw the Backwash Adapter (2) directly onto the threads on the Tap Filter. For threaded taps, you will need to use the Threaded Spigot Adapter (3) to attach the unit to your tap.

TRANSLATION:



Slowly turn the water on until good flow is seen and let it run for at least 30 seconds.

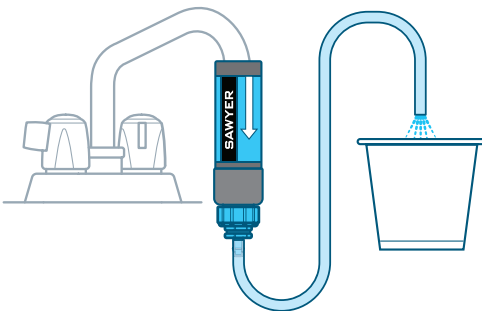
TRANSLATION:



Flip the filter back around and discard the first quart (liter) of water going forwards through the filter immediately after backwashing.

TRANSLATION:

## USING THE EXTENSION HOSE



If your sink is shallow, you may not be able to fit a cup or pitcher underneath the Tap Filter. Using the Extension Hose (5) allows you to filter into a container on your countertop.

TRANSLATION:

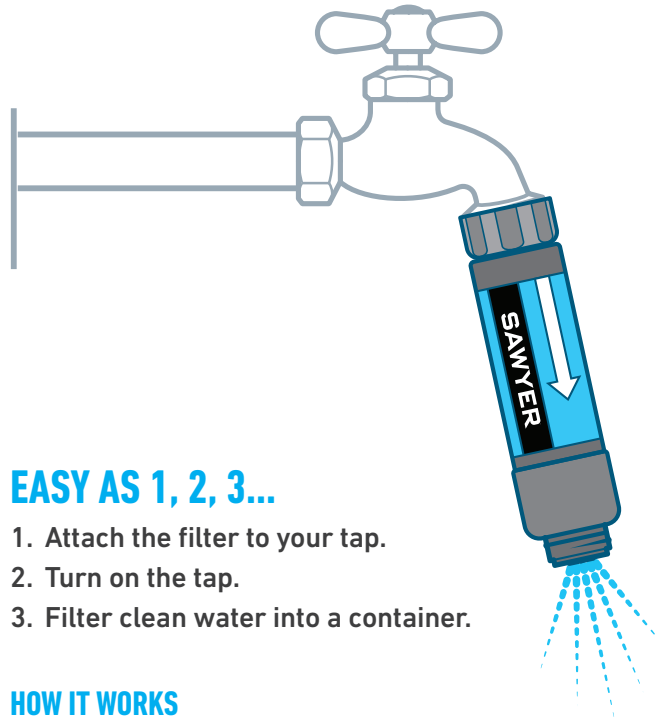


Visit [sawyer.com/international](https://www.sawyer.com/international) for assembly and cleaning videos.



# SAWYER® 1-2-3 TAP FILTER

# SAWYER®



## EASY AS 1, 2, 3...

1. Attach the filter to your tap.
2. Turn on the tap.
3. Filter clean water into a container.

## HOW IT WORKS

The Sawyer Tap Filter 0.1 micron absolute hollow fiber membrane filter houses a cluster of micro-fibrous tubes which use similar technology found in medical dialysis. As water passes through the side walls of the tubes, harmful bacteria and protozoa are trapped on the outer walls, so you can be confident your water is safe to drink.

## REMOVES

Removes 99.99999% of bacteria (salmonella, cholera and E. coli) and 99.99999% of protozoa (cryptosporidium and giardia), exceeding US EPA recommendations for removal rates. Removes 100% of microplastics. No chemicals or batteries required. This filter was tested by an independent certified lab to meet all relevant certification requirements. Published support data is available at [sawyer.com](http://sawyer.com).

## KIT INCLUDES



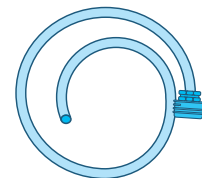
TAP FILTER



BACKWASH ADAPTER



SPIGOT ADAPTER



EXTENSION HOSE



TAP GAUGE

## WILL IT FIT?



For smooth taps 17 mm to 20mm (11/16" to 3/4") in diameter. Adapter included for threaded taps (hose bibs).

Model: SP134X EPA Est. No: 58188-FL-1

Manufactured by Sawyer Products, Inc., P.O. Box 188, Safety Harbor, FL 34695

Visit [SAWYER.COM/INTERNATIONAL](http://SAWYER.COM/INTERNATIONAL) for more information.

