

*Smilla*

1. Back bodice

For Smilla with cap sleeves  
or long sleeves

Cut one on the fold  
1 cm (3/8") seam allowance included

©2019 Threads by Caroline

Place on fold

Grainline



↑  
Grainline

*Smilla*

### 7. Side seam pockets for dress

Cut 4 (two opposite pairs)  
1 cm (3/8") seam allowance included

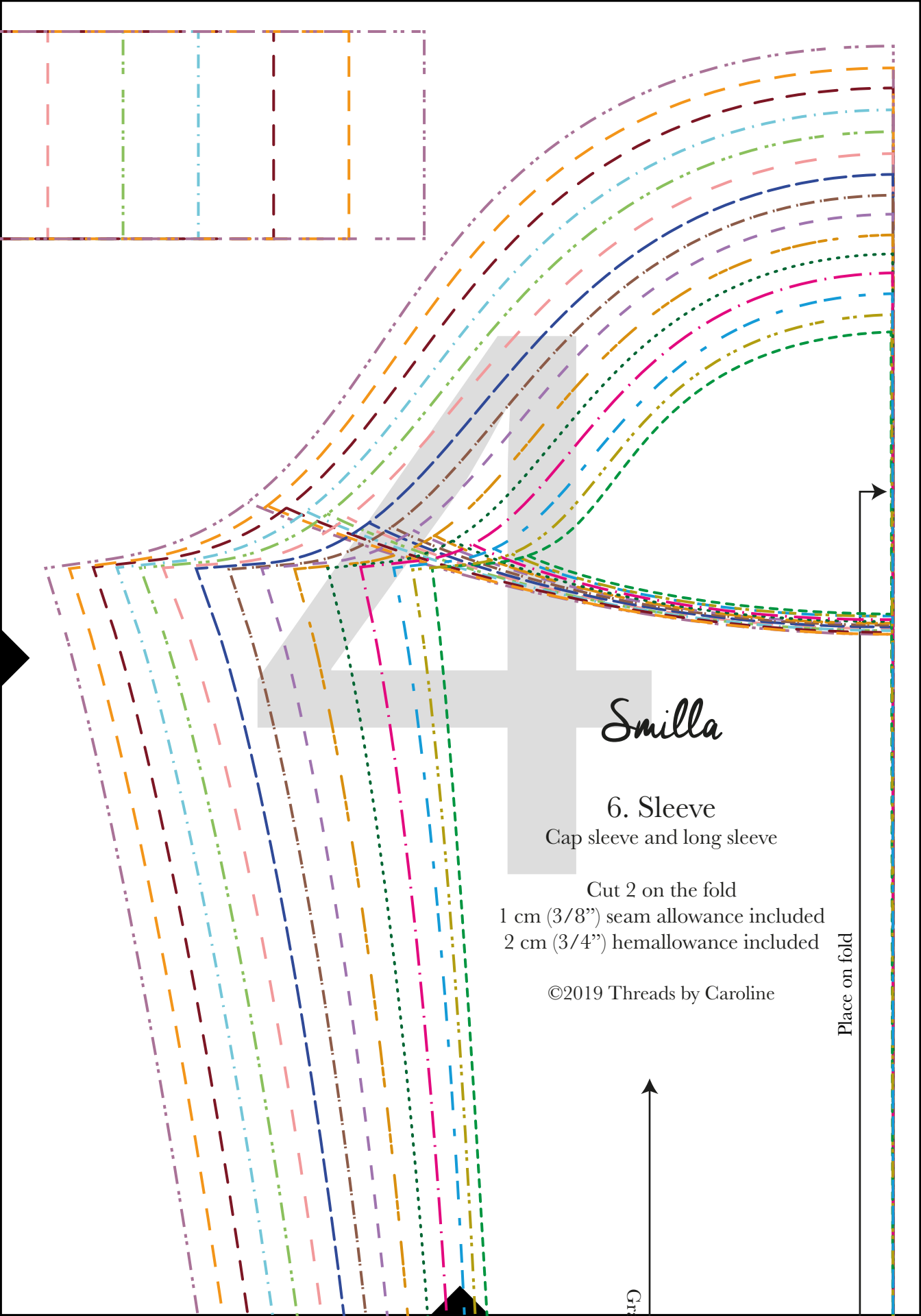
©2019 Threads by Caroline

↑  
Grainline

62-80

86-110

116-146



*Smilla*

## 6. Sleeve

Cap sleeve and long sleeve

Cut 2 on the fold

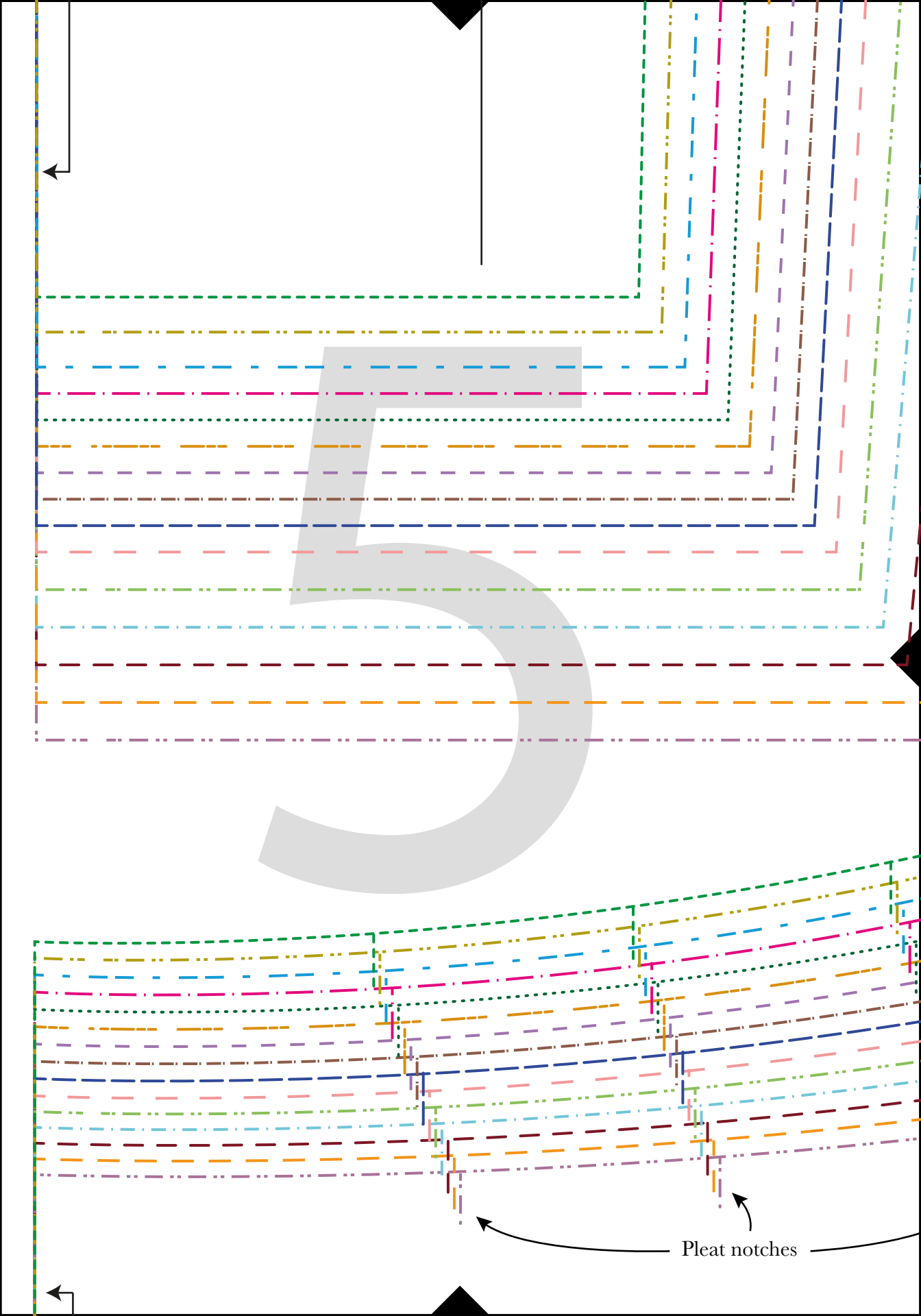
1 cm (3/8") seam allowance included

2 cm (3/4") hem allowance included

©2019 Threads by Caroline

Place on fold

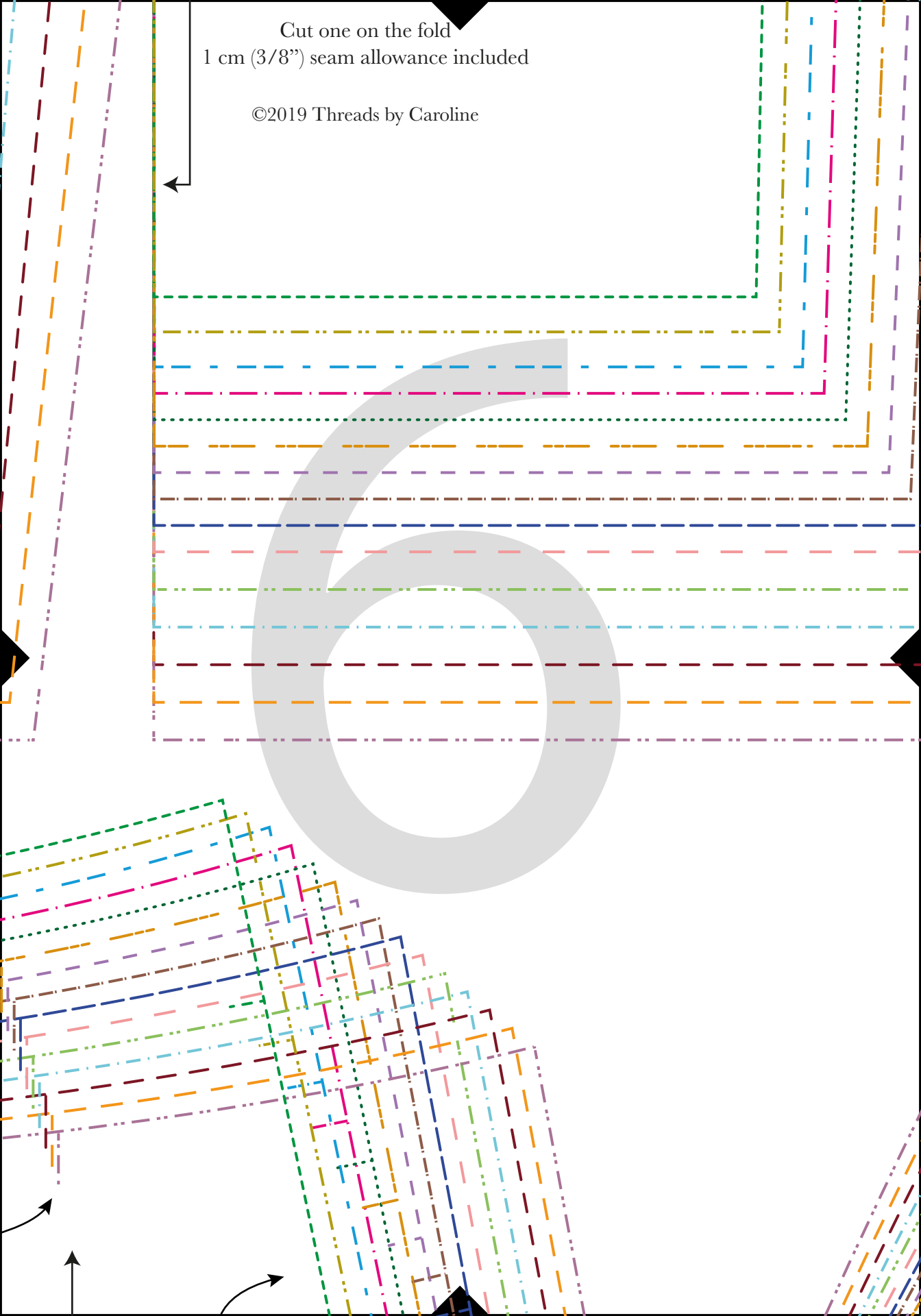
Gr

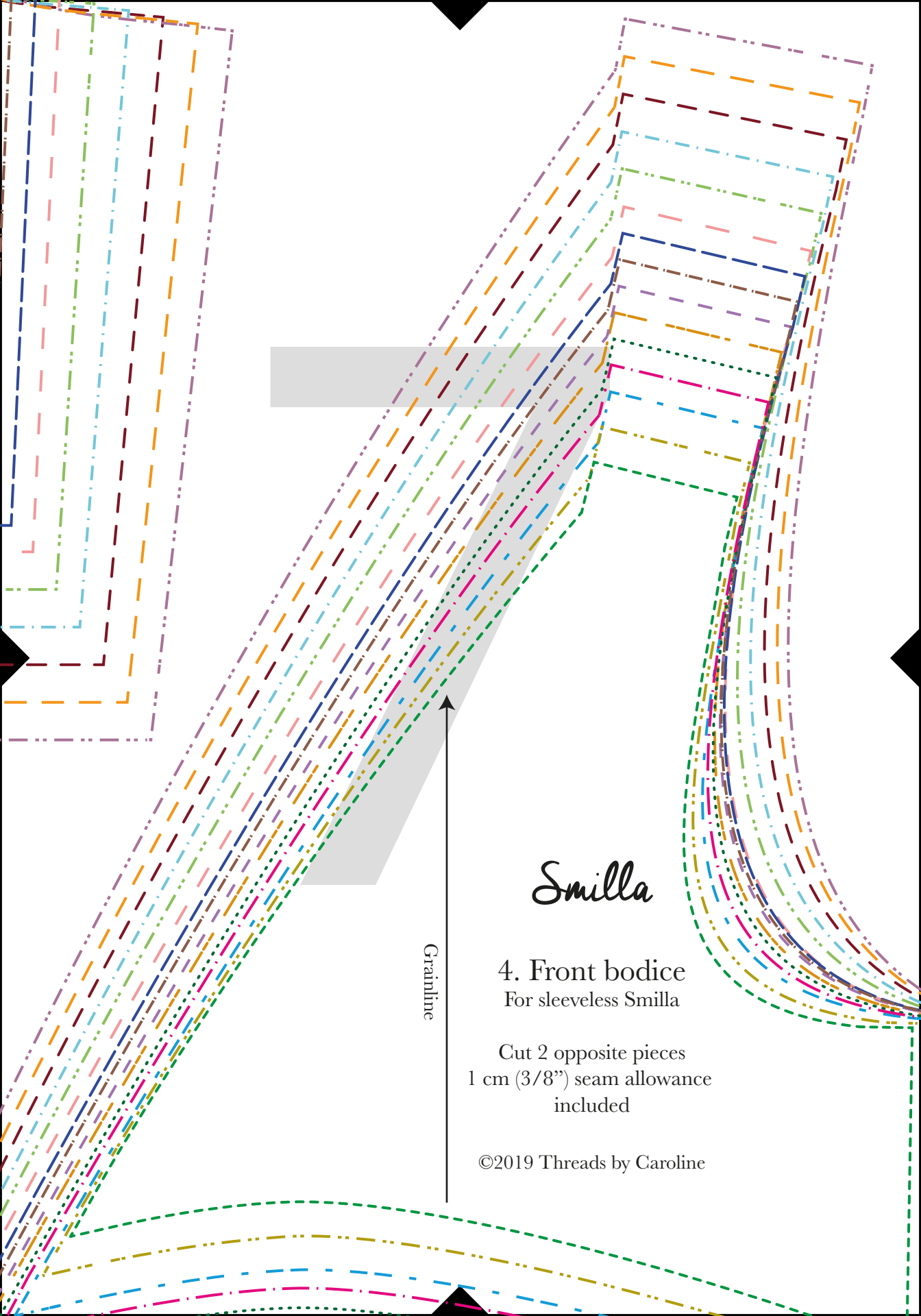


Pleat notches

Cut one on the fold  
1 cm (3/8") seam allowance included

©2019 Threads by Caroline





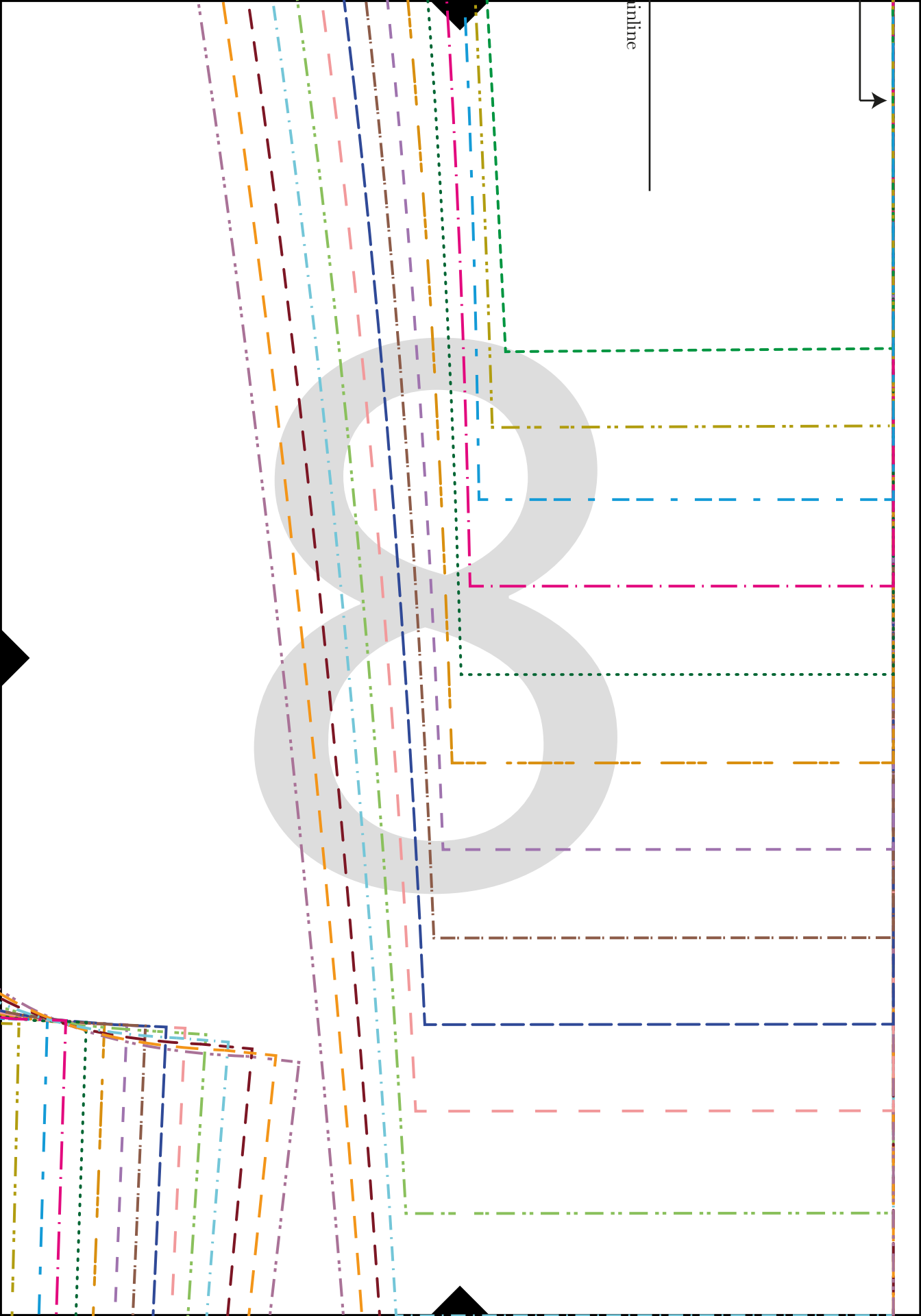
*Smilla*

4. Front bodice  
For sleeveless Smilla

Cut 2 opposite pieces  
1 cm (3/8") seam allowance  
included

©2019 Threads by Caroline

Grainline



inline



## 5. Skirt and peplum

Cut 2 on the fold

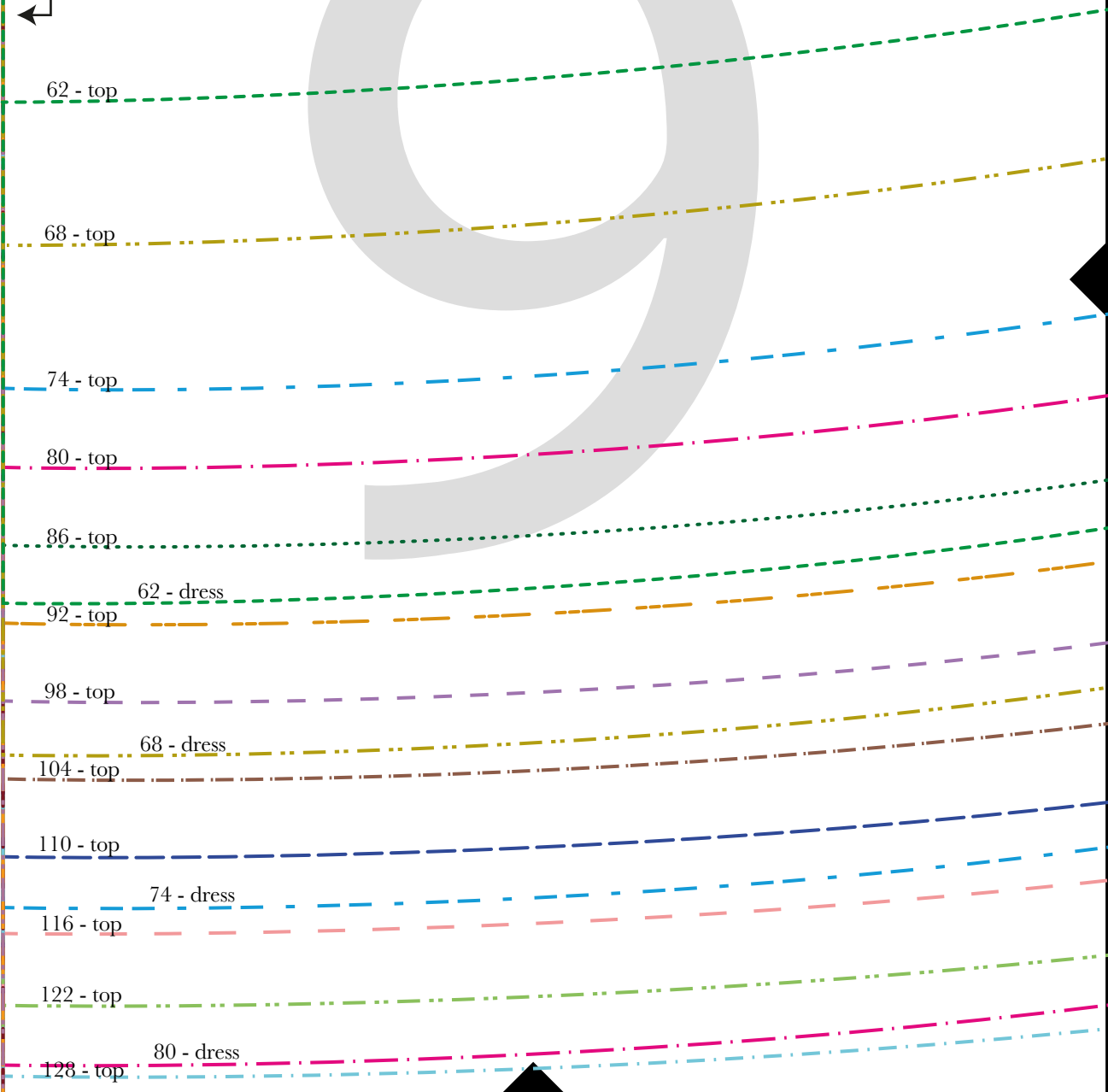
1 cm (3/8") seam allowance included

2 cm (3/4") hem allowance included

Note that there are two different lengths for each size:  
one for the top and one for the dress.

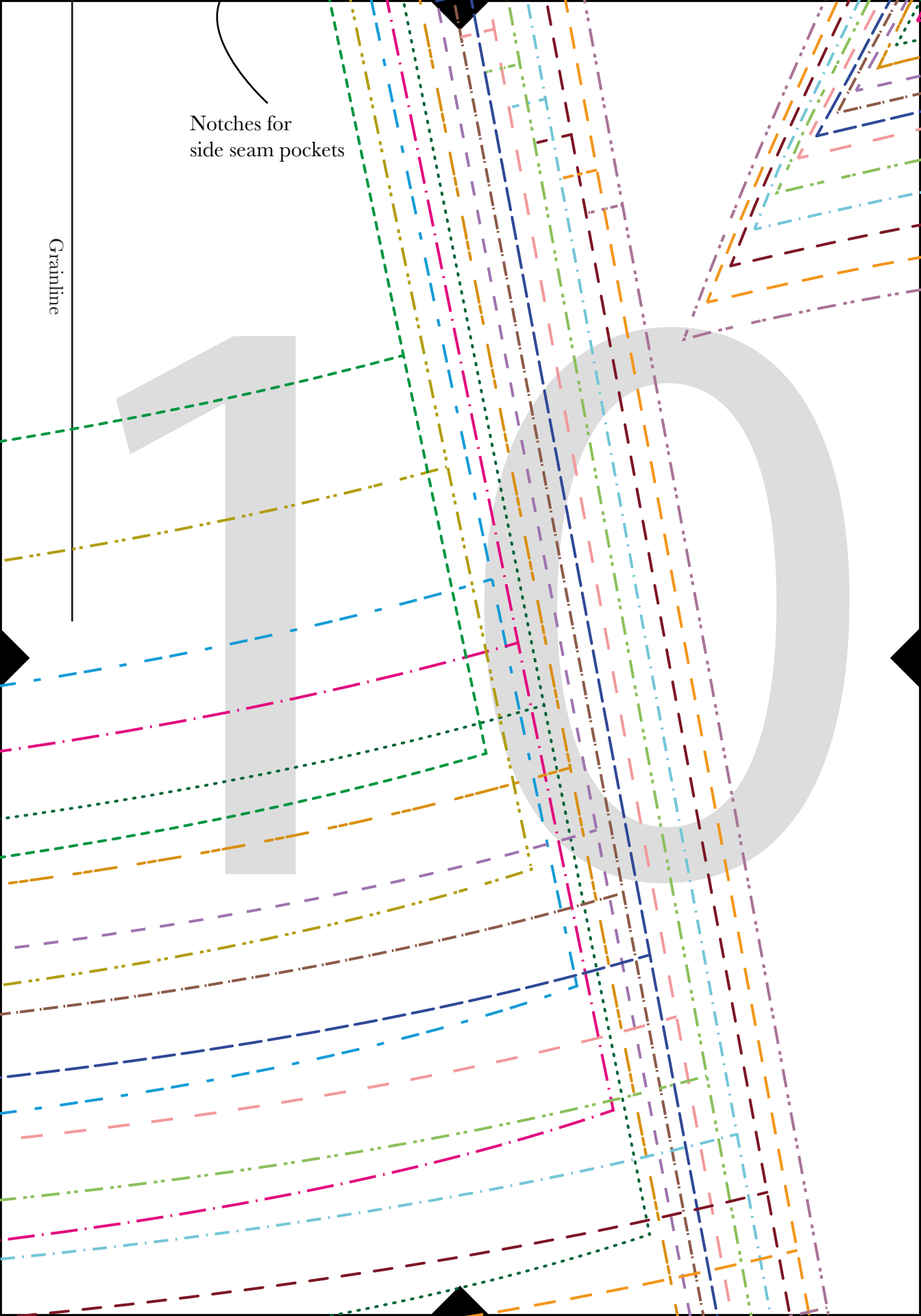
©2019 Threads by Caroline

Place on foldl



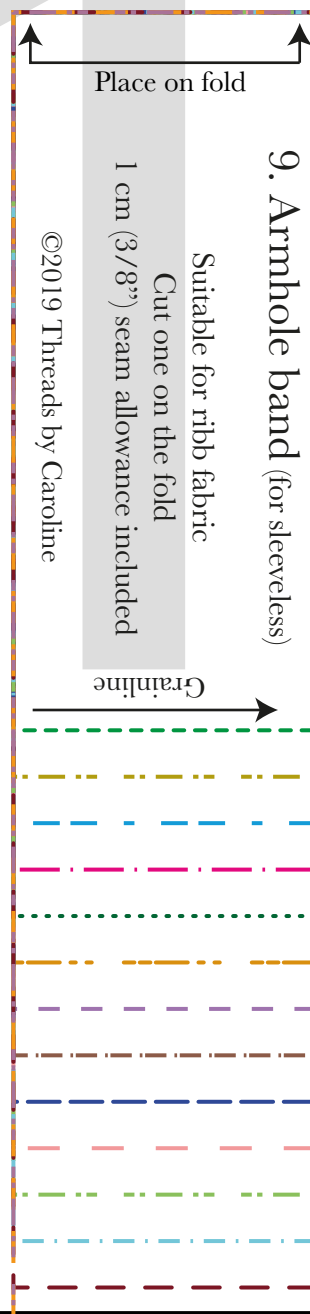
Notches for  
side seam pockets

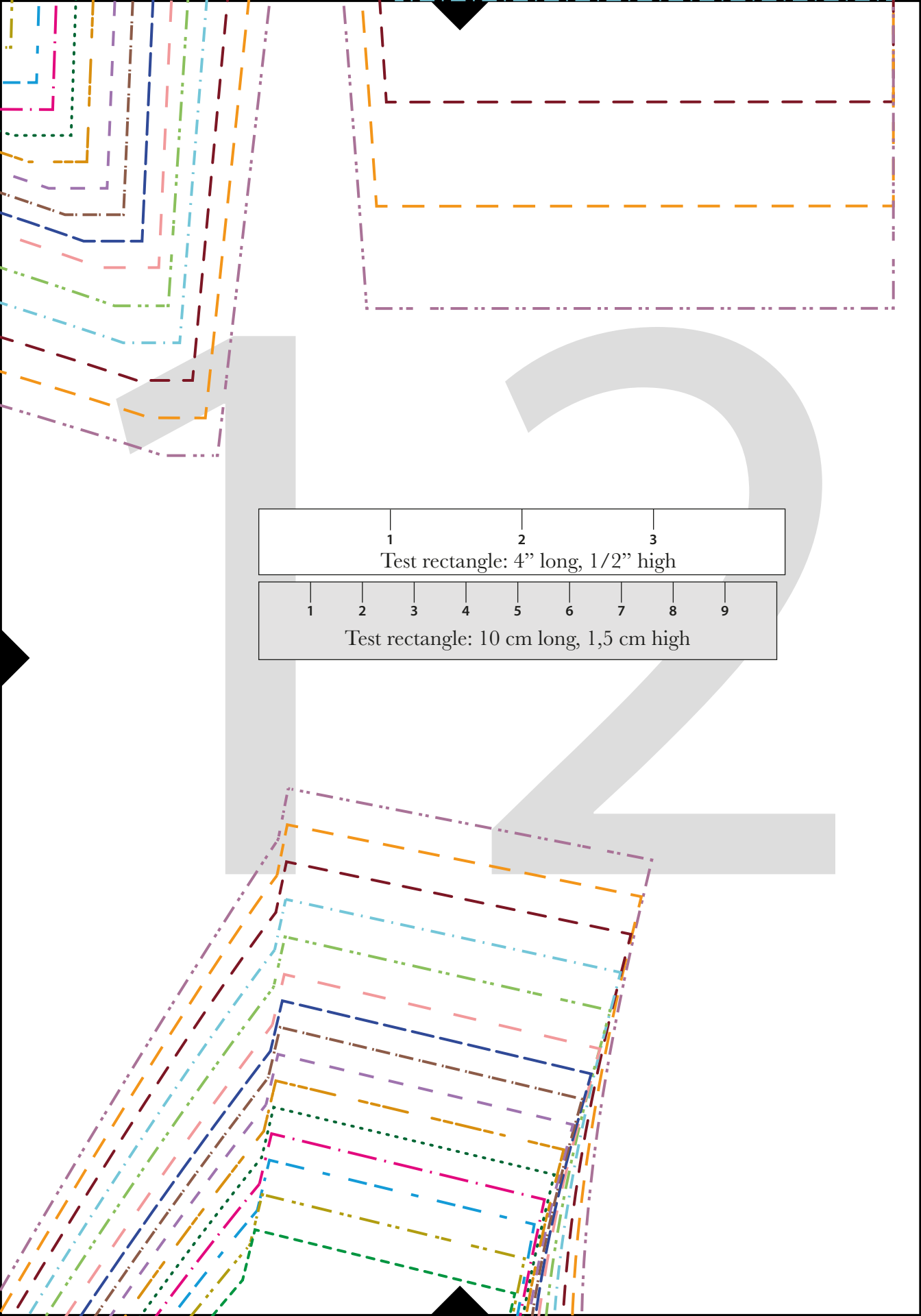
Grainline



### Size guide:

62	-----
68	-----
74	-----
80	-----
86	-----
92	-----
98	-----
104	-----
110	-----
116	-----
122	-----
128	-----
134	-----
140	-----
146	-----





1 2 3  
Test rectangle: 4" long, 1/2" high

1 2 3 4 5 6 7 8 9  
Test rectangle: 10 cm long, 1,5 cm high

134 - top

140 - top

86 - dress

146 - top

92 - dress

98 - dress

104 - dress

110 - dress

116 - dress

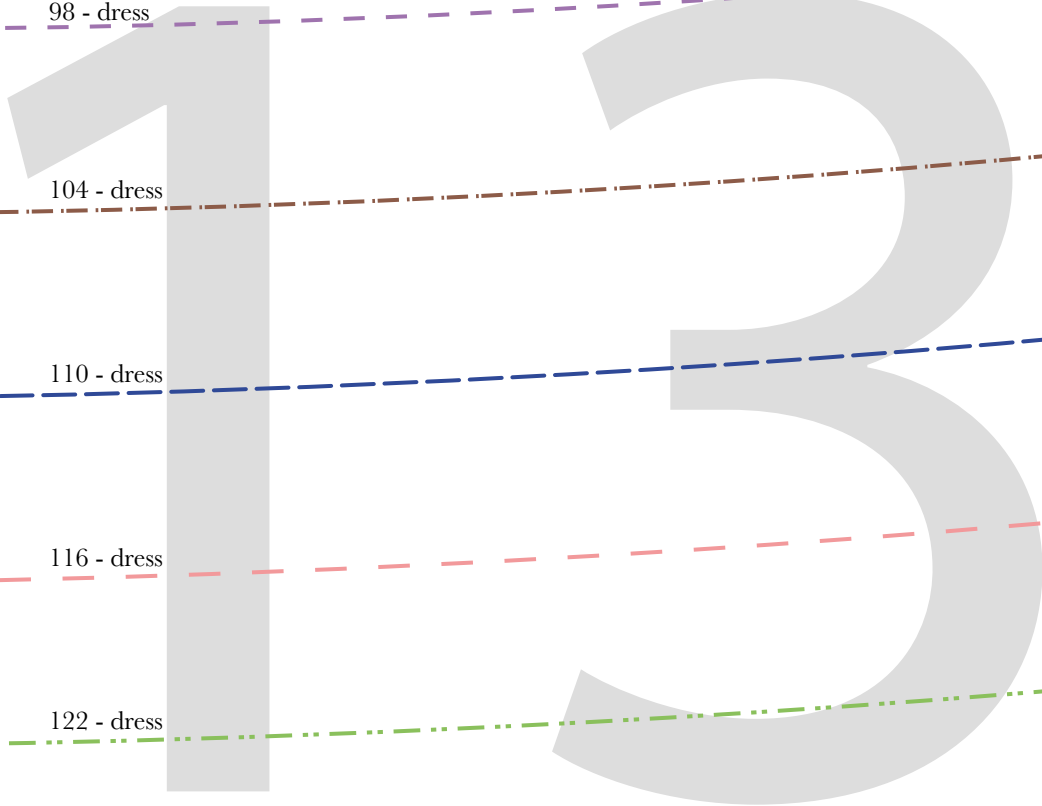
122 - dress

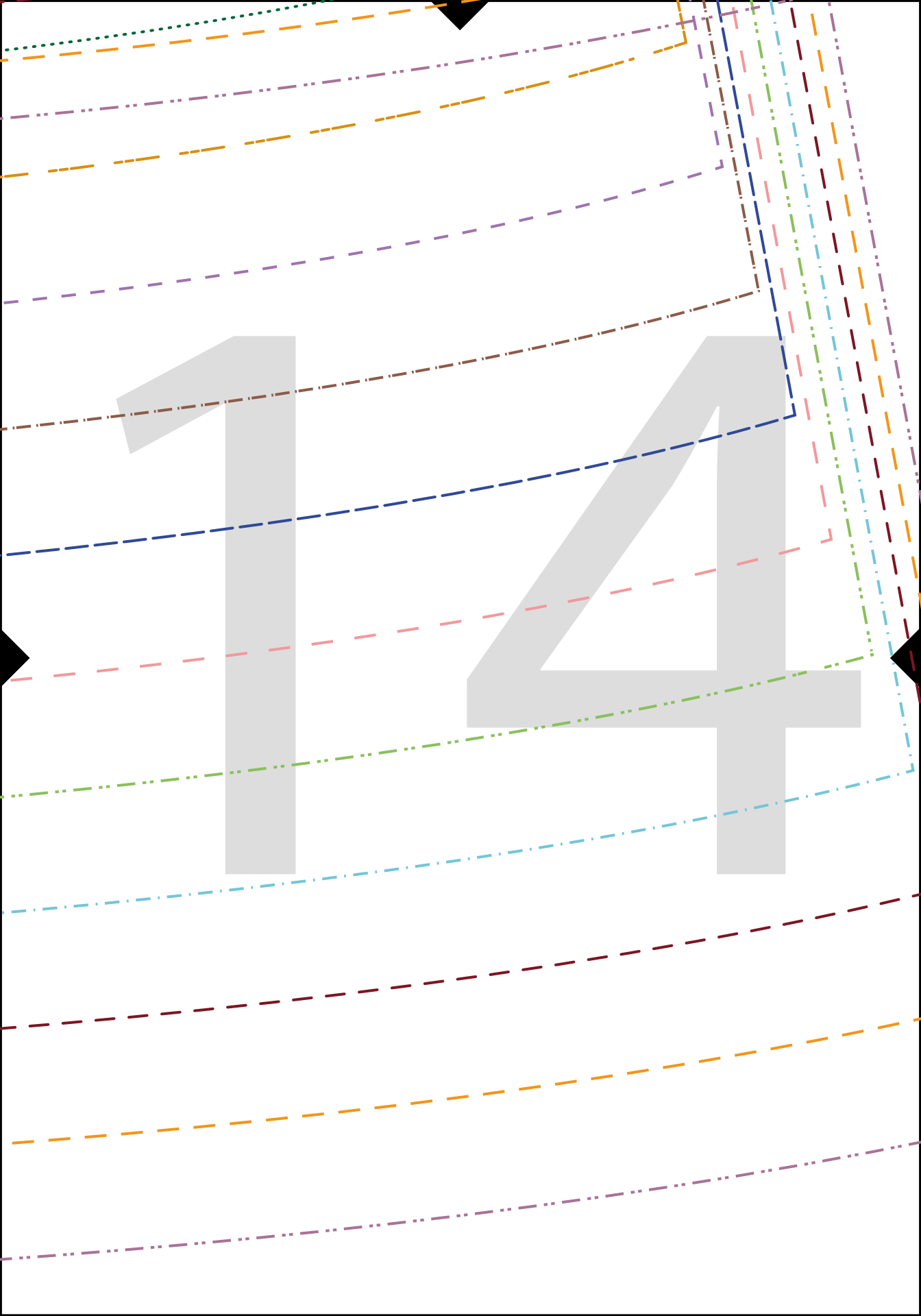
128 - dress

134 - dress

140 - dress

146 - dress

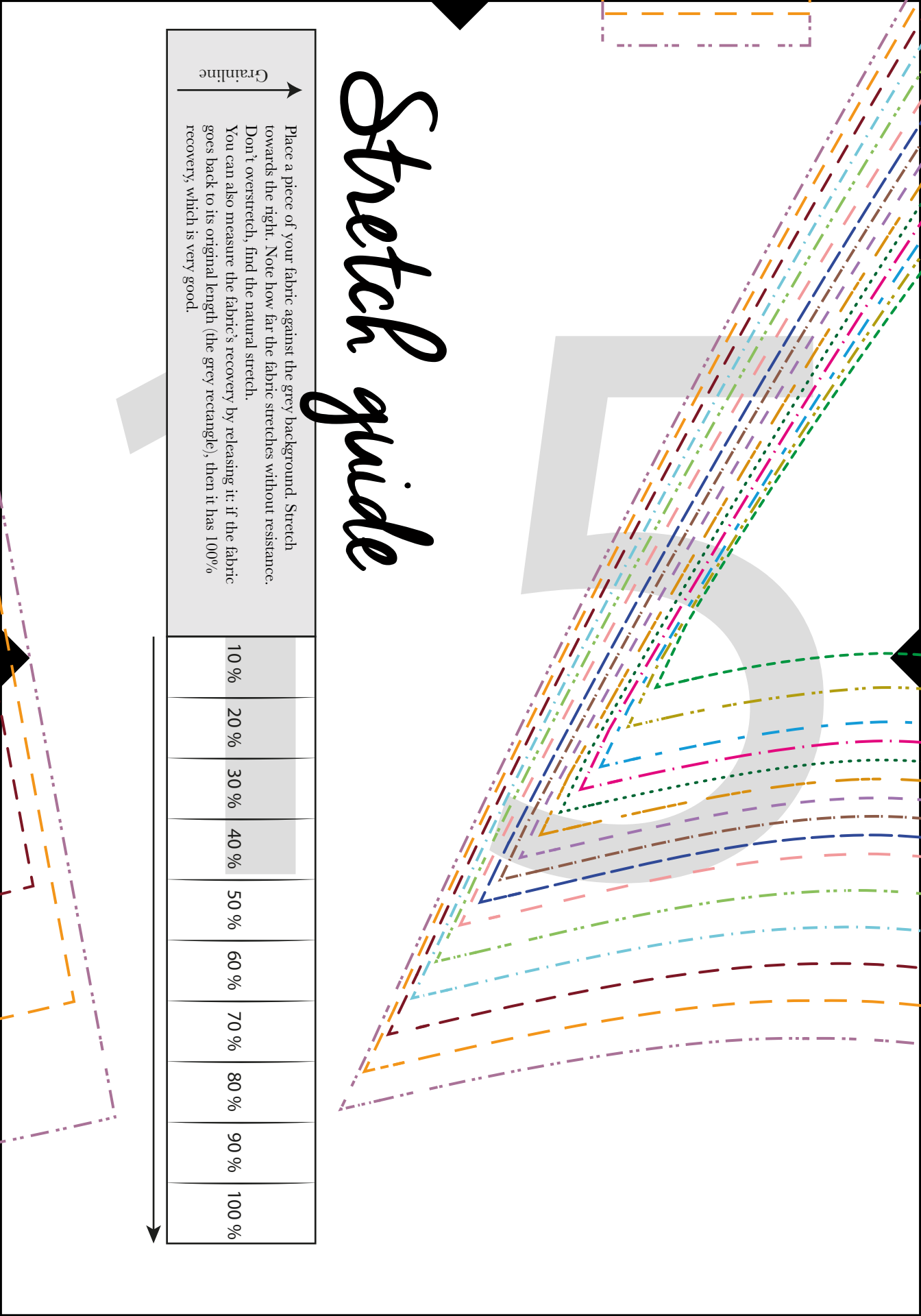




# Stretch guide

Place a piece of your fabric against the grey background. Stretch towards the right. Note how far the fabric stretches without resistance. Don't overstretch, find the natural stretch. You can also measure the fabric's recovery by releasing it: if the fabric goes back to its original length (the grey rectangle), then it has 100% recovery, which is very good.

10 %	20 %	30 %	40 %	50 %	60 %	70 %	80 %	90 %	100 %



# Smilla

## 2. Front bodice

For Smilla with cap sleeves  
or long sleeves

Cut 2 opposite pieces  
1 cm (3/8") seam allowance included

©2019 Threads by Caroline

Grainline

