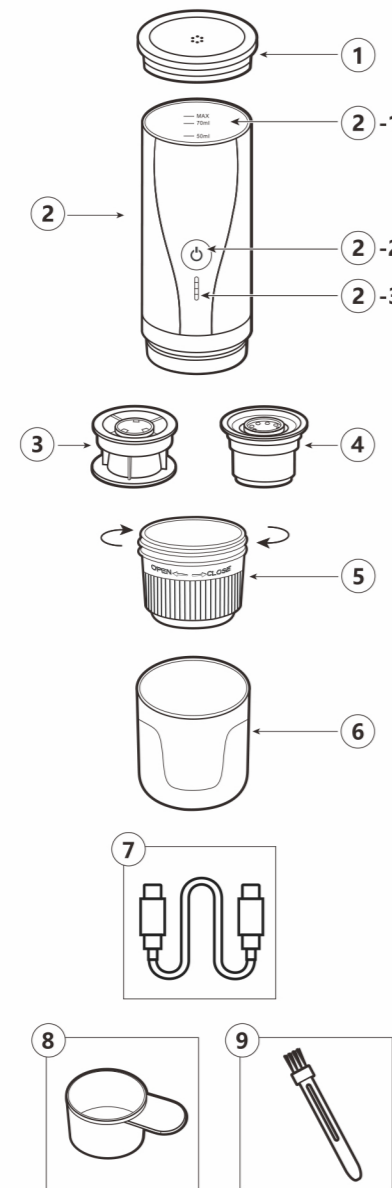


# PORTABLE ESPRESSO COFFEE MACHINE

## USER GUIDE



### Product structure



- |                     |                   |
|---------------------|-------------------|
| ① Cap               | ④ Ground Basket   |
| ② Main Body         | ⑤ Locking Chamber |
| ②-1 Water Tank      | ⑥ Cup             |
| ②-2 Button          | ⑦ Type-C Cable    |
| ②-3 Indicator Light | ⑧ Spoon           |
| ③ Capsule Basket    | ⑨ Brush           |

### Product Parameter:

Portable Espresso Maker	
Style	Versatile
Model No.	PCM03
Water Tank Material	Food grade Stainless steel
Extraction Pressure	20bar
Net Weight	640g
Built-in Battery	7500mAh
Power	90W
Charging Voltage	5V
Extraction Temp	96°C 205°F
Capacity	Max. 80mL
Extraction Way	Off-line extraction
Heating Function	YES
Applicable	Nespresso Capsule / Ground Coffee

EN

It is a mini style espresso maker, containing:

20 bar extraction pressure.

A combination of high temperature and extraction pressure results in a better and more exquisite coffee, easy making espresso.

Compatibility: ground coffee and Nespresso capsule.

### Attention:

Please read all the points below and keep the manual well.

- Keep the maker out of reach of children, do not hand over the machine to the person who does not know how to use and never read the manual.

- This machine is for personal use only.

- Check the machine to see if it is in good condition and all the parts are well allocated after unboxed.

- Check the machine before use, do not use if it is damaged.

- Keep the packing bag and accessories out of reach of children.

- Please use the machine carefully when there are children nearby.

- Do not expose the machine to fire, direct sunlight or high temperature.

- Do not hold the machine in the stove, oven, micro-wave oven or dish washer.

- Use mineral or purified water.

- When in use, tighten the locking chamber to avoid leakage.

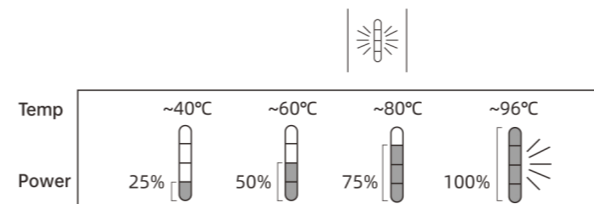
- Do not fix or replace parts personally.

### Important Notice:

- Attention, there might be danger for improper use.
- If you fill in hot water, please make sure the machine keeps stable to avoid the risk of splashing and scald.
- During heating, DO NOT open the cap to avoid scald.
- After use, please wait a few minutes and take out the used capsule to avoid scald.
- Please make sure there is water in the water tank before each use. Do not use the machine with empty water tank, as it might damage the machine.

### Charging:

- Please use a 5V/2A or 5V/3A USB wall charger to charge. The machine will not be charged while using a charger below 10W (e.g. the Apple 5W charger).
- Use type-C cable for charging. When connecting to the cable, the lights will turn on according to the power status. When fully charged, the lights will turn off in 1 minute.



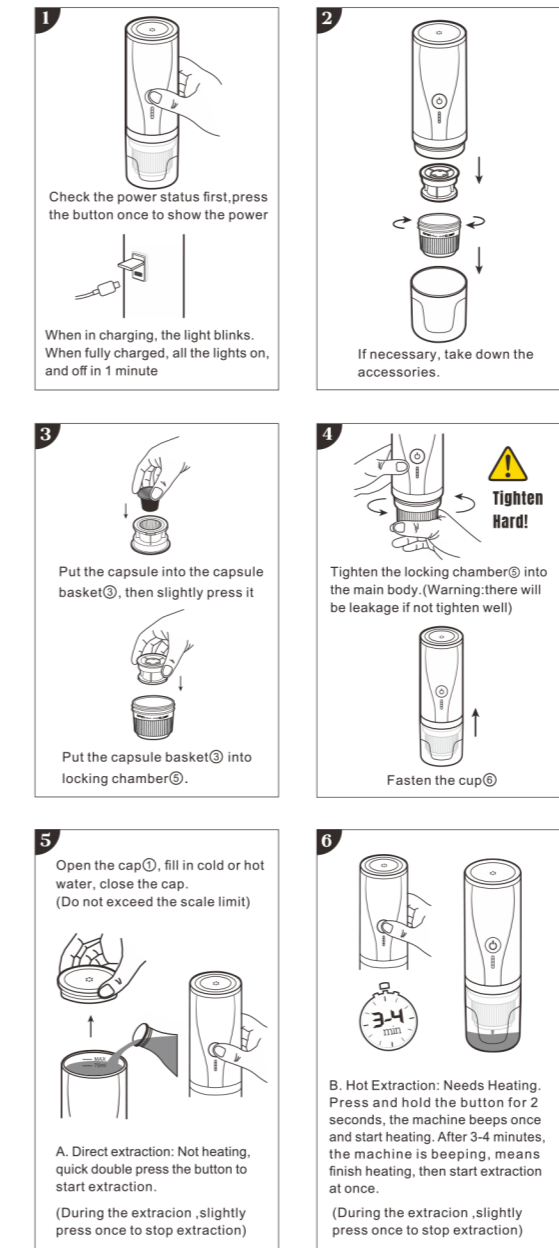
### Usage Instruction:

\*Please check the power status before first use. (Slightly press once to show the power)

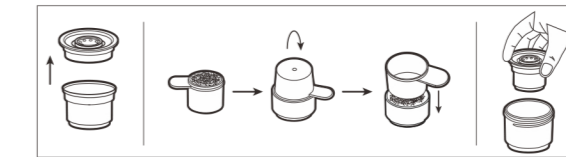
\*During non-stop extraction, if there is no coffee coming out, please loosen the locking chamber, then tighten again.

\*Please wait more than 5 minutes for continue heating.

\*Clean the machine before use. (see cleaning part)



### How to use ground coffee:



Change the above step 2 to as follows:

Use ground basket ④.

Take out the cap, use spoon ⑧ to fill 5-8g fine ground coffee, then use the bottom to press, close the cap, then go back to above step 3.

### Cleaning & Descaling:

After each use, take out the capsule or ground and clean the basket ③ & ④.

No capsule operation, fill the hot water into water tank ②-1, quick press the button ②-2 two times, keep repeating this operation can clean the inner machine.

There will be water remains in the tank, clear it and dry it.

Use wiper to clean the main body ②, do not wash it in the dish washer or direct into the water.

Do not use detergent.

Clean the machine every day.

### Storage:

- Do not expose the machine to fire, direct sunlight or high temperature

- Do not stay in the car under the straight sunshine

- Store the machine in a cool, dry place

### Environmental Protection:

Do not dispose the electrical equipment in the trash!

Electrical equipment is not allowed in dispose in family's trash. According to European Directive 2012/19/EU on waste electrical and electronic equipment and its implementation in national law. It is necessary to collect specially and deal with it in a dedicated recycling center under the respect of environment. Learn about local special collecting facilities where electrical and electronic equipment marked with this symbol.

Do not dispose the batteries in household waste!

Damaged or defective batteries must be dealt with separately, and recycled in an environmental way.

Thank you for buying portable espresso maker  
Please read the manual carefully before use and keep it well