

28mm Eyelet bay pole fixing instructions

- Please read carefully before commencing

We recommend a professional or a person competent in DIY undertake this installation.
We recommend two people undertake this installation.

Please note: Additional fasteners other than those sent with this eyelet bay pole may be required depending on the mounting surface. Wallboard and plaster require the use of anchors such as expansion or toggle bolts. Brick, tile or stone need special plugs and drill bits. Remember to always pre-drill holes in wood to avoid splitting.

Tools Required for hanging the eyelet bay pole

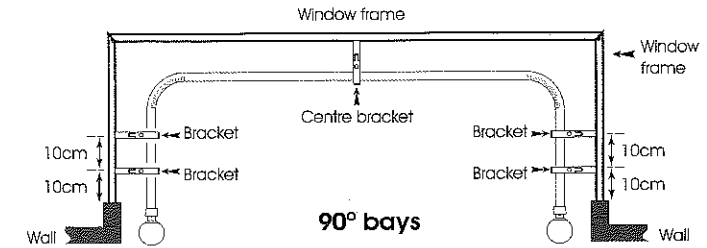
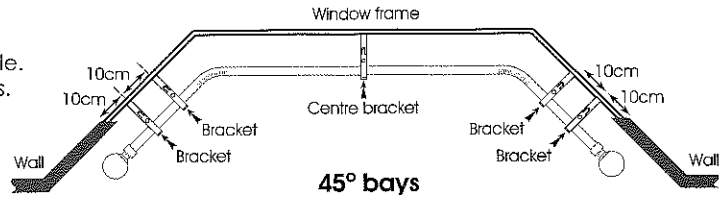
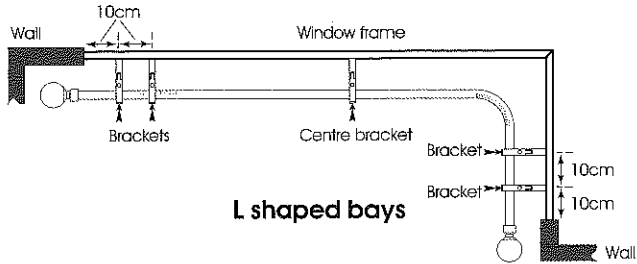
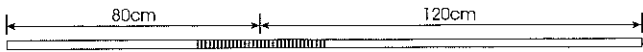
Drill 6mm Drill Bit Screw Driver Hack Saw Spirit level

Before bending this pole, read the 'Bending the bay pole' section carefully. All measurements are approximate.

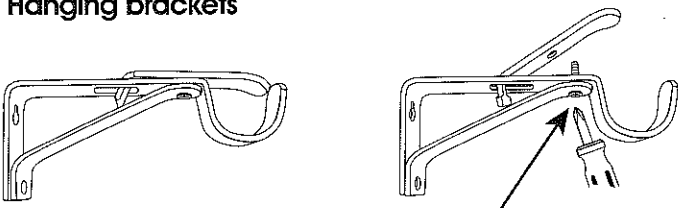
Parts list							
Pole length	Serrated bay pole	Finall	Hanging Bracket	Joining splice	Screws	Wall plugs	Allen key
400cm	2	2	5	1	10	10	1

BRACKET & POLE CUT POSITIONS

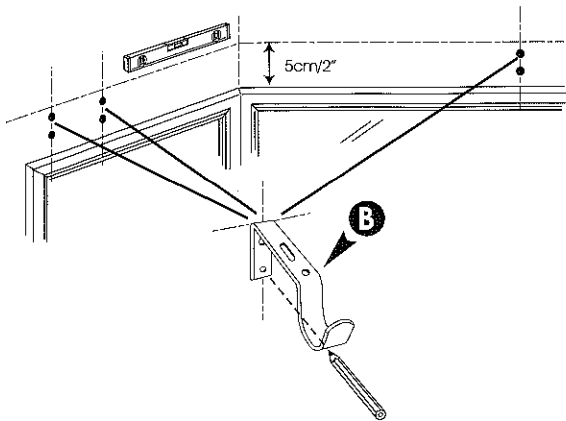
See the diagram that is the nearest match to your bay window style. Please note the distance from each pole end to centre of the cuts. Orientate your pole to suit your bay. All measurements are approximate. Final position is a guide only.



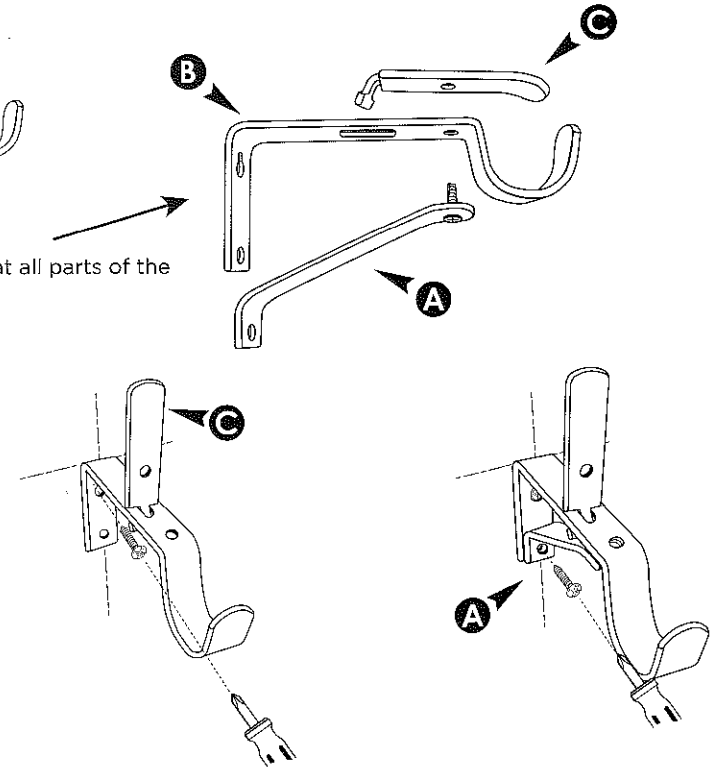
1 Hanging brackets



Loosen the screw on the underneath of the wall bracket so that all parts of the bracket are separate as shown here.



Using part **B** of the wall bracket, mark the drill holes on the wall at the required position. Check they are all level.

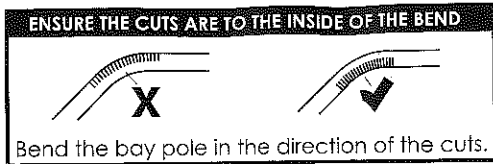


Fix the top screw through the wall bracket securing this part to the wall. Attach part **C** to the top of the bracket.

Attach part **A** to part **B** before you fix the bottom wall screw to the wall.

Remember to always use the best fittings suitable for your wall type.

2 Bending the bay pole

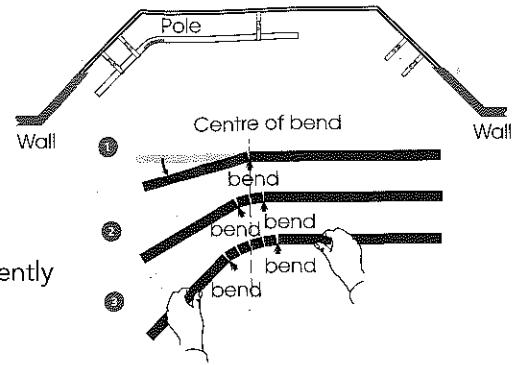


BEFORE YOU BEGIN TO BEND THE POLE HERE IS A PRACTICAL TIP

Use your knee to ease the bending process to generate a smooth bend by gently spreading the pressure throughout the length of the bend.

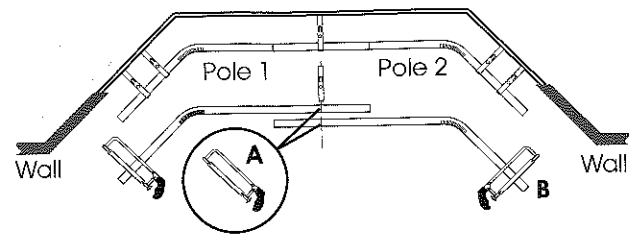
Be careful to avoid injury or damage to your clothes as the pole cuts close.

Working from the centre position of the bend, bend the pole slightly in the arrow position shown in the diagram until you reach your required angle, checking the fit as you go along.



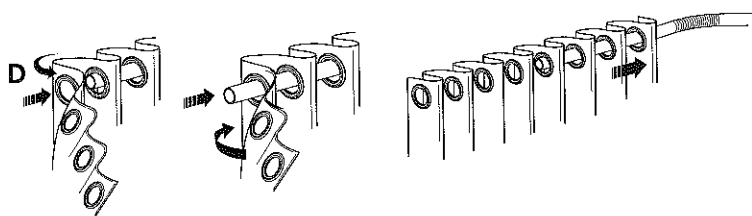
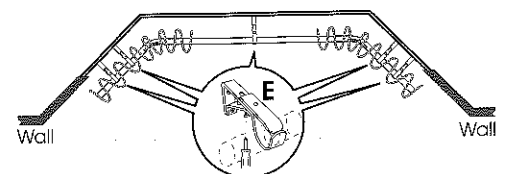
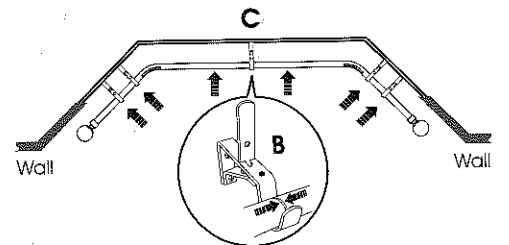
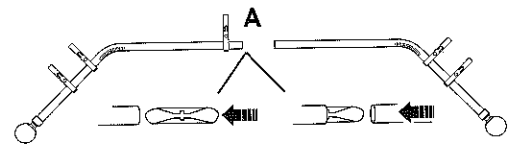
3 Trimming the bay pole to size

- A Using the middle of the centre bracket as your measure, mark and trim each pole to length.
- B Leave a minimum of 10cm after the last bracket for the eyelet curtain and the mounting of the pole finial.



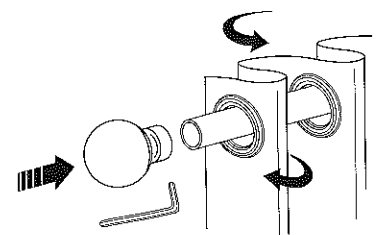
4 Hanging the bay pole & eyelet curtains

- A Insert the joining splice half way into the first pole, then add the second pole to complete the join.
- B Move the top part of the bracket up as shown.
- C Place the pole onto the brackets, make sure the centre join of the poles are held within the centre bracket.
- D Lift one side of the pole and slide the eyelet curtains onto the pole making a zig-zag effect. Repeat this on the other side.
- E To secure the bay pole and curtain move the top part of the bracket back into position and tighten the grub screw.



5 Attaching the finials

Slide the finial onto the pole end and tighten the grub screw using the allen key.



This bay pole can be used with heading taped curtains and 28mm lined curtain rings.